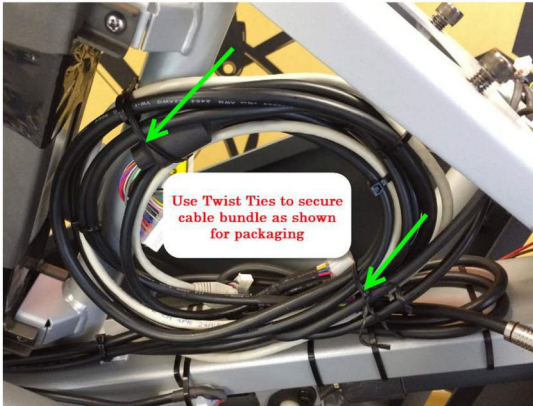
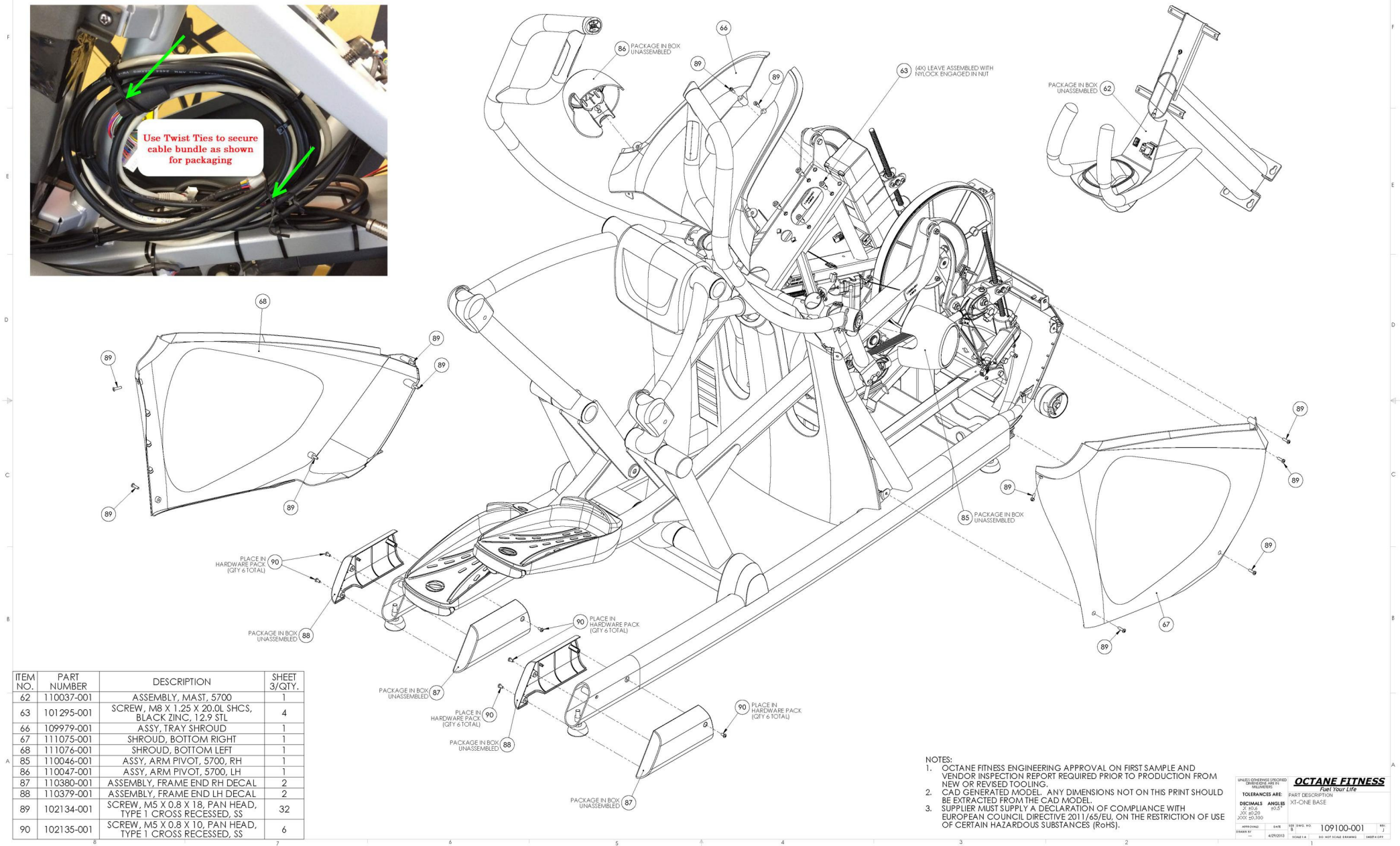


THE INFORMATION CONTAINED IN THIS DRAWING IS THE SOLE PROPERTY OF OCTANE FITNESS. ANY REPRODUCTION IN PART OR WHOLE WITHOUT THE WRITTEN PERMISSION OF OCTANE FITNESS IS PROHIBITED.

REV	DESCRIPTION	ECH #	DATE	ENG
-	See Sheet1	-	-	-



Use Twist Ties to secure cable bundle as shown for packaging



ITEM NO.	PART NUMBER	DESCRIPTION	SHEET 3/QTY.
62	110037-001	ASSEMBLY, MAST, 5700	1
63	101295-001	SCREW, M8 X 1.25 X 20.0L SHCS, BLACK ZINC, 12.9 STL	4
66	109979-001	ASSY, TRAY SHROUD	1
67	111075-001	SHROUD, BOTTOM RIGHT	1
68	111076-001	SHROUD, BOTTOM LEFT	1
85	110046-001	ASSY, ARM PIVOT, 5700, RH	1
86	110047-001	ASSY, ARM PIVOT, 5700, LH	1
87	110380-001	ASSEMBLY, FRAME END RH DECAL	2
88	110379-001	ASSEMBLY, FRAME END LH DECAL	2
89	102134-001	SCREW, M5 X 0.8 X 18, PAN HEAD, TYPE 1 CROSS RECESSED, SS	32
90	102135-001	SCREW, M5 X 0.8 X 10, PAN HEAD, TYPE 1 CROSS RECESSED, SS	6

NOTES:

- OCTANE FITNESS ENGINEERING APPROVAL ON FIRST SAMPLE AND VENDOR INSPECTION REPORT REQUIRED PRIOR TO PRODUCTION FROM NEW OR REVISED TOOLING.
- CAD GENERATED MODEL. ANY DIMENSIONS NOT ON THIS PRINT SHOULD BE EXTRACTED FROM THE CAD MODEL.
- SUPPLIER MUST SUPPLY A DECLARATION OF COMPLIANCE WITH EUROPEAN COUNCIL DIRECTIVE 2011/65/EU, ON THE RESTRICTION OF USE OF CERTAIN HAZARDOUS SUBSTANCES (RoHS).

UNLESS OTHERWISE SPECIFIED: TOLERANCES ARE:		<b>OCTANE FITNESS</b> Fuel Your Life	
DECIMALS	ANGLES	PART DESCRIPTION	
0.0150	0.1015	XT-ONE BASE	
0.0000	0.0000		
APPROVED:	DRAWN:	REV:	109100-001
DATE:	4/20/2013	SCALE:	1:1
		DO NOT SCALE DRAWING. SHEET 3 OF 3	