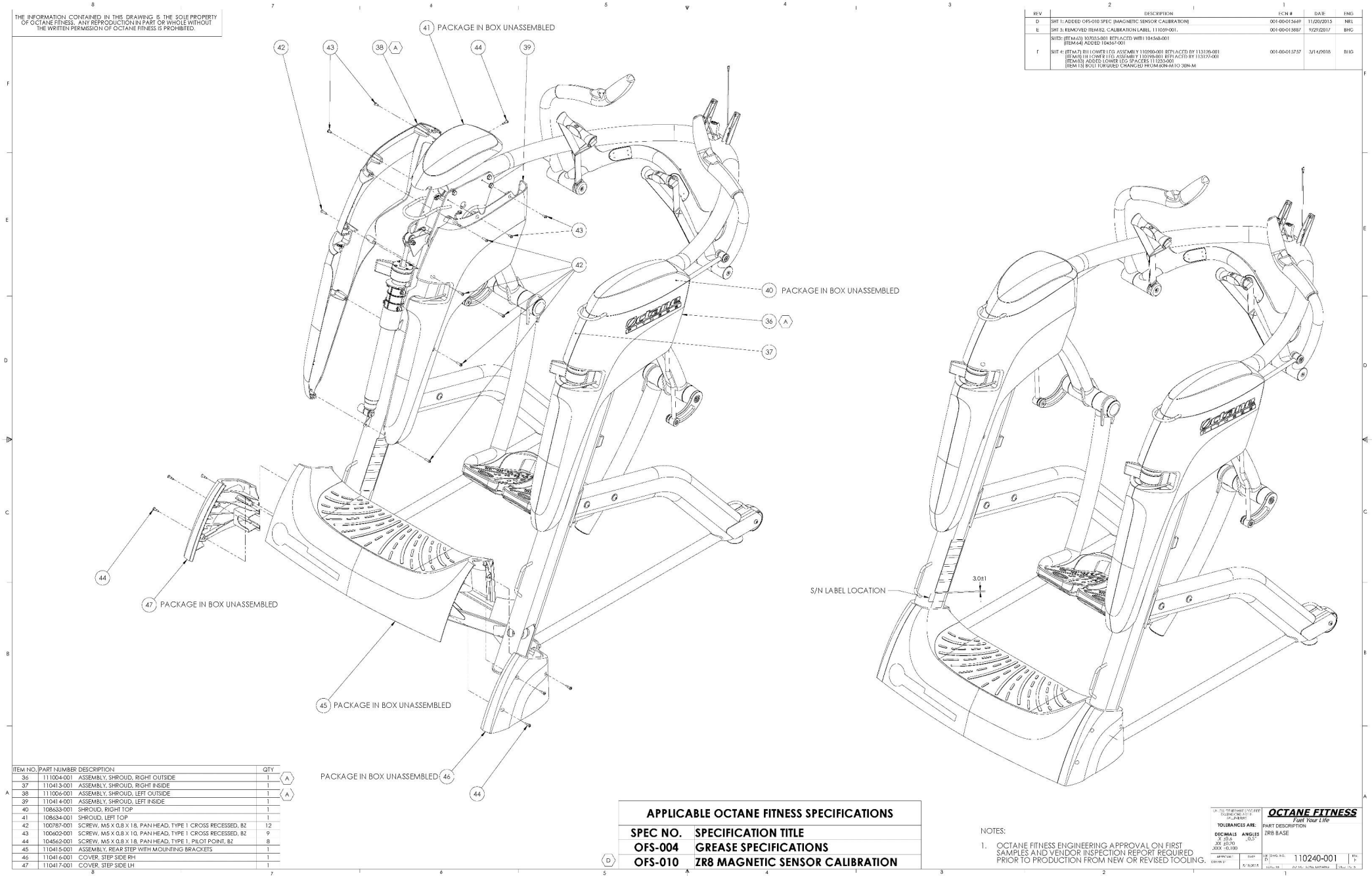


THE INFORMATION CONTAINED IN THIS DRAWING IS THE SOLE PROPERTY OF OCTANE FITNESS. ANY REPRODUCTION IN PART OR WHOLE WITHOUT THE WRITTEN PERMISSION OF OCTANE FITNESS IS PROHIBITED.

REV	DESCRIPTION	ECN #	DATE	ENG
D	SMT 1: ADDED OFS-010 SPEC (MAGNETIC SENSOR CALIBRATION)	001-00-015649	11/20/2015	NRL
E	SMT 5: REMOVED ITEM B2; CALIBRATION LABEL; 111039-001	001-00-015887	9/27/2017	BHG
	NOTE: ITEM A33 SUPPLISER REPLACED WITH 104588-001 ITEM A44 ADDED 104587-001			
F	SMT 6: ITEM 71 RH LOWER LEG ASSEMBLY 110900-001 REPLACED BY 113120-001 ITEM 11H LOWER LEG ASSEMBLY 110900-001 REPLACED BY 113127-001 ITEM A33 ADDED LOWER LEG SPACERS 112535-000 ITEM 13 BOLT TORQUE CHANGED FROM 60N-M TO 30N-M	001-00-015737	3/14/2016	BLG



ITEM NO.	PART NUMBER	DESCRIPTION	QTY
36	111004-001	ASSEMBLY, SHROUD, RIGHT OUTSIDE	1
37	110413-001	ASSEMBLY, SHROUD, RIGHT INSIDE	1
38	111006-001	ASSEMBLY, SHROUD, LEFT OUTSIDE	1
39	110414-001	ASSEMBLY, SHROUD, LEFT INSIDE	1
40	109623-001	SHROUD, RIGHT TOP	1
41	109634-001	SHROUD, LEFT TOP	1
42	100787-001	SCREW, M5 X 0.8 X 1.8, PAN HEAD, TYPE 1 CROSS RECESSED, B2	12
43	100602-001	SCREW, M5 X 0.8 X 1.0, PAN HEAD, TYPE 1 CROSS RECESSED, B2	9
44	104562-001	SCREW, M5 X 0.8 X 1.8, PAN HEAD, TYPE 1, PILOT POINT, B2	8
45	110415-001	ASSEMBLY, REAR STEP WITH MOUNTING BRACKETS	1
46	110416-001	COVER, STEP SIDE RH	1
47	110417-001	COVER, STEP SIDE LH	1

APPLICABLE OCTANE FITNESS SPECIFICATIONS	
SPEC NO.	SPECIFICATION TITLE
OFS-004	GREASE SPECIFICATIONS
OFS-010	ZR8 MAGNETIC SENSOR CALIBRATION

NOTES:
1. OCTANE FITNESS ENGINEERING APPROVAL ON FIRST SAMPLES AND VENDOR INSPECTION REPORT REQUIRED PRIOR TO PRODUCTION FROM NEW OR REVISED TOOLING.

OCTANE FITNESS
Part Description: ZR8 BASE

APPROVED: [Signature] DATE: 11/20/2015
DRAWN BY: [Signature] DATE: 11/20/2015
PART NO.: 110240-001
REV: 7