

FireBoard® Case



Model FC11



Features

- Protection for your FireBoard thermometer during inclement weather and outdoor activities
- Water resistant buttons and plugs provide full interaction with the device, probes, accessories, and power
- Built-in kickstand for improved viewing angle
- Powerful magnetic base for mounting on most metallic surfaces
- Nylon strap can be attached to fit any mounting situation

What's included

- (1) FireBoard Case with kickstand, magnets, and gaskets
- (2) Extra Probe Port Gaskets
- (1) Nylon Mounting Strap

Installing your FireBoard in the Case

installation is a snap! install videos at fireboard.com/snap

1 Verify probe gasket is installed

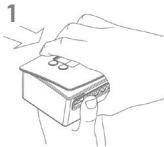
The probe gasket should be seated evenly in the opening on the front of the base.

2 Place your FireBoard into base

The FireBoard will fit snugly and set just below the top of the case.

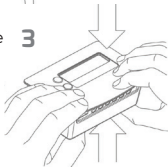
3 Hook the faceplate to the back of the case

Line up the 2 hooks on the underside of the faceplate with the catches on the back of the base. Using both hands, apply pressure to the front and back of the case while sliding the faceplate forward.



4 Snap the case together

Firmly press both sides of the faceplate down onto the base - the front hooks will snap into place. The top is now secured to the base and your FireBoard is ready for use.



Tips & Guidelines

When plugging in a probe use care to avoid damaging the gasket. The probe gasket has small pre-cut slits over each port. Some wear-and-tear is expected with extended use - we've included a replacement gasket that can be installed if necessary.

For easy removal of the FireBoard from the Case, simply open the auxiliary port door and lift the edge of the device until it can be removed completely.

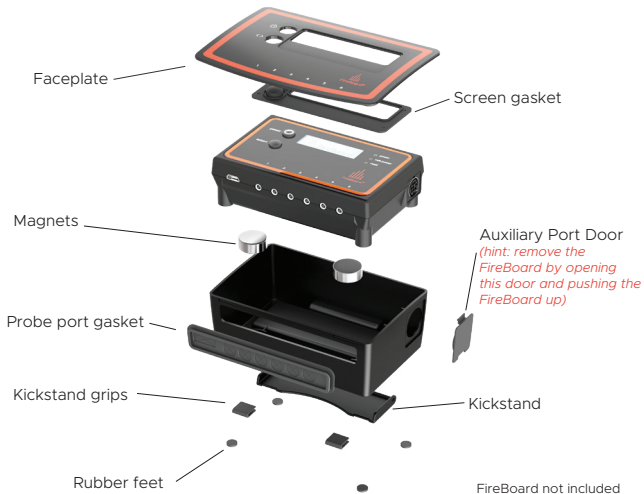
The optimal placement for weather resistance is horizontal on a flat surface or with the kickstand extended.

In wet conditions, the following may lead to increased chances of water entering the case:

- Mounting the FireBoard Case at an angle greater than 90° vertical
- Placing the FireBoard Case upside down
- Jets of water contacting the Case from below the faceplate or at extreme angles around the gaskets

The FireBoard Case is not heat resistant - do not place on the surface of a hot smoker or firebox.

The FireBoard Case is designed to be weather resistant; however, it is not waterproof. Submerging the case in water or exposing it to extreme weather situations may lead to damage of your FireBoard.





Download the official FireBoard® App:



* See fireboard.com/support
for device compatibility

Online Dashboard at fireboard.io

Monitor your temperatures, set alerts, view session history all online.

Login to your account at fireboard.io

Installation Videos, How-Tos, Tutorials at fireboard.com/snap



FireBoard Labs
Kansas City, MO
info@fireboard.com
816-945-2232

www.fireboard.com

FireBoard is a trademark of FireBoard Labs, LLC and is registered in the U.S. FireBoard® TM and © 2019 FireBoard Labs, LLC. All rights reserved.