



**Welcome  
to  
Back to School  
Parent Night**

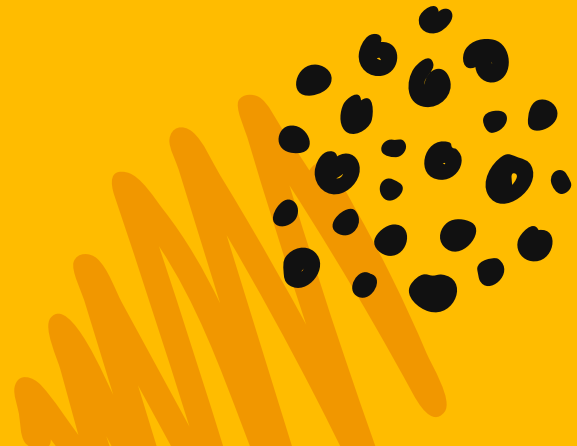
SEPTEMBER 12, 2019

# Prayer





**Welcome**



# Thank You





**Staff**

**Introductions**





# Hello!

**I am Amy Conlon**

2nd Year as Principal of  
St. Matthew



# Dress Code

- ✗ **Mon-Thur:** regular dress code
  - ✗ No sweatshirts
- ✗ **Friday:** Spirit Wear (St. Matt's, Regis, Xavier apparel) with any bottoms
- ✗ Can wear girl/boy scout vest on meeting days





# Go Gold

Tomorrow we will support the friendly rivalry between Iowa and Iowa State while also showing our support for childhood cancer awareness in September!





# What's New for 2019-2020?





**WIN Time**

# Why?

## *K-5 School Wide Proficiency Levels*

	Fall	Winter	Spring
2017-2018	79%	69%	61%
2018-2019	75%	79%	70%
2019-2020			

# More Data

*Year to Year Growth  
2017-2018 to 2018-2019*

	Fall	Winter	Spring
17/18-18/19	-4%	10%	9%

# More Data


## *Seasonal Growth*

### *Fall - Winter - Spring*

	Fall-Winter	Winter-Spring
2017-2018	-10%	-8%
2018-2019	4%	-9%



# How this will work

- x Everyday
    - x JK-2: Morning from 8:15-8:45
    - x 3-5: Afternoon from 2:45-3:05
  - x Intervention
    - x Small groupings of students focusing on specific skills
  - x Enrichment
    - x Project-based learning
- 



INCREASE LITERACY SCORES



INCREASE STUDENT LEARNING

**Goal**

HAVE FUN

PREPARE STUDENTS FOR THE NEXT



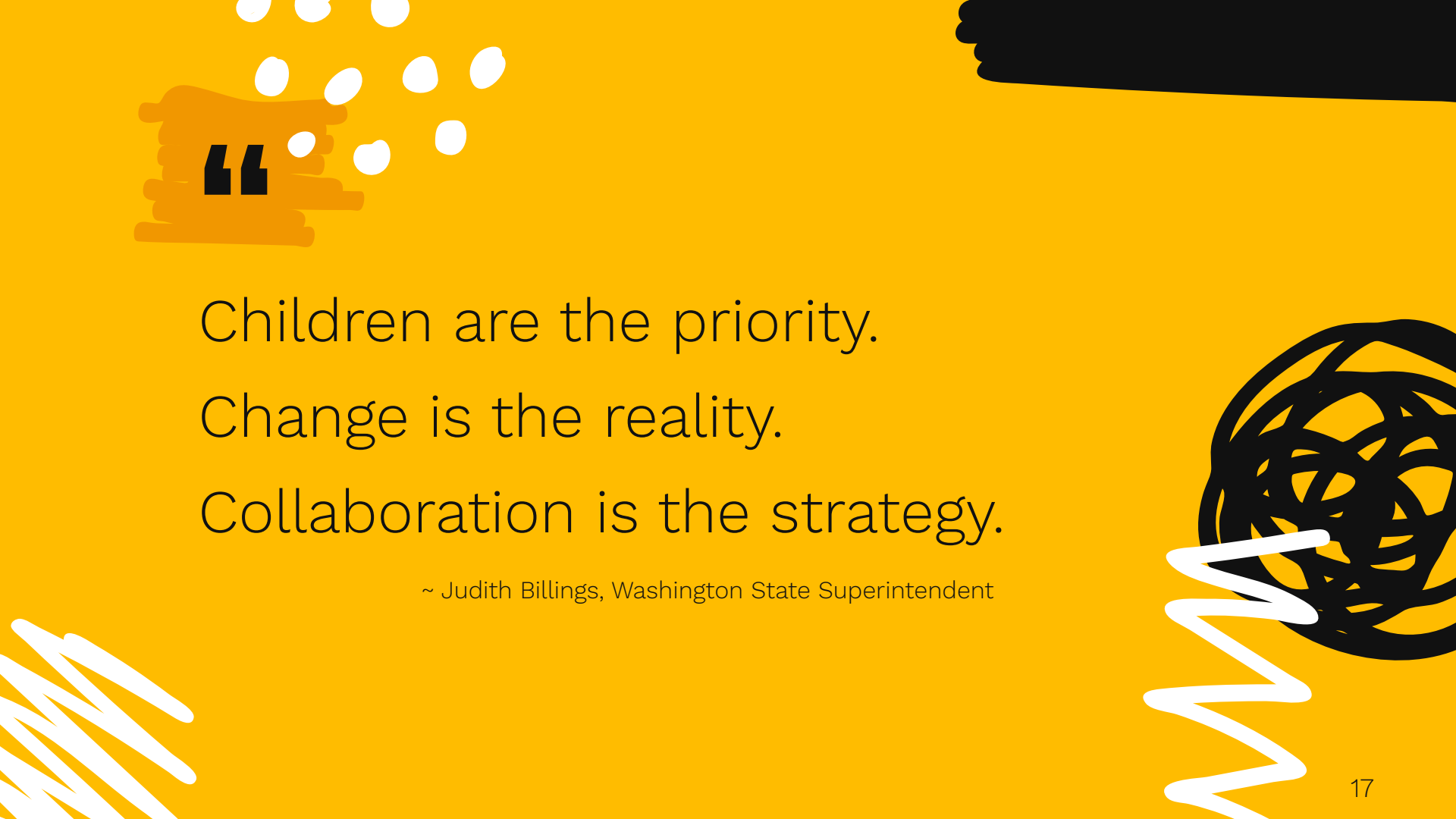
INCREASE CONFIDENCE





# PLC Time



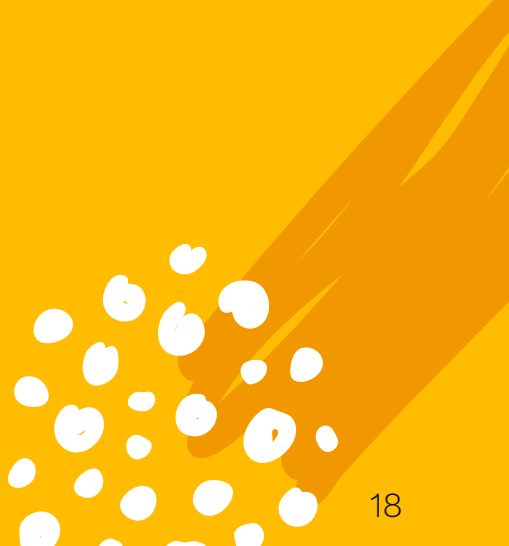


Children are the priority.  
Change is the reality.  
Collaboration is the strategy.

~ Judith Billings, Washington State Superintendent



# End Result

- x Teachers meet to plan
  - x Vertical alignment
  - x Child study
  - x 1x - 45 minutes
  - x Common language
- 

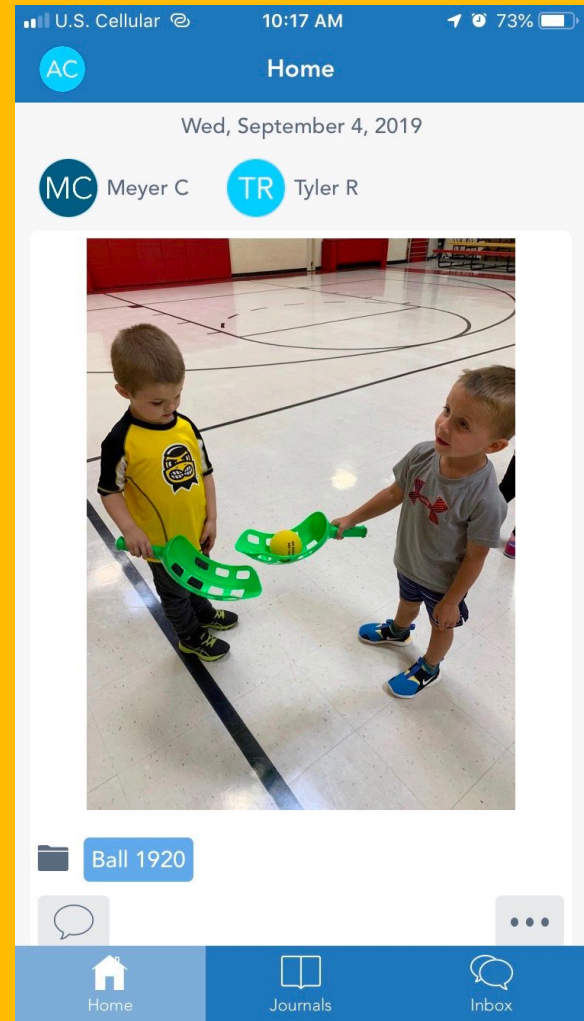


# Seesaw



# Engaging You In The Process

Sign up and watch the magic appear on your phone! Will give you the latest class updates in real-time, allowing for awesome conversations at home!





**SCRIP**

# Hello!


**I am Holly Barrett**

Chairperson of the St.  
Matthew SCRIP Program





# Key Information

- x Weekly, Tuesday SCRIP email update
  - x 50/50 split between you and St. Matthew
  - x Physical gift card orders due on Monday by 10AM - delivered to you on Thursday
- 

# How It Works - Walmart

- x Walmart - 2.5%
- x \$100 gift card
- x \$2.52 rebate
  - 50% to you - \$1.26
  - 50% to St. Matthew - \$1.26



# How It Works - Old Navy

- x Old Navy - 14%
  - x \$100 gift card
  - x \$14 rebate
    - 50% to you - \$7.00
    - 50% to St. Matthew - \$7.00

# ThankScripting Day



**THANK  
SCRIPING  
DAY**

**TODAY - Thursday,  
September 12th**



# Secret Stories



# Engage the learner

Finding ways to make sense of our phonic system in a story-telling, interactive way.



[www.thesequestories.com](http://www.thesequestories.com)

"When Mommy's around, I have to stand up tall and say my name!"

bit  
bite

"But when she's too far away to reach me, I can be short & lazy!"

bite  
bitter

a  
i  
e  
o  
u

e

e u te

Mommy e  
SECRET STORIES 2014

Mommy e  
SECRET STORIES 2014

©www.TheSecretStories.com



# Mama E



# What's Next

## 6:40-6:55

### Rotation 1

- ✘ Visit your child's classroom
- ✘ Visit Essentials teachers in the Art room

## 7:00-7:15

### Rotation 2

- ✘ Visit your child's classroom
- ✘ Visit Essentials teachers in the Art room

## 7:20-7:30

### Q&A

- ✘ Teachers available for any questions



# Thanks!

**Any questions?**

You can find me at  
[aconlon@stmatthewcr.org](mailto:aconlon@stmatthewcr.org) or  
call 319-362-3021

