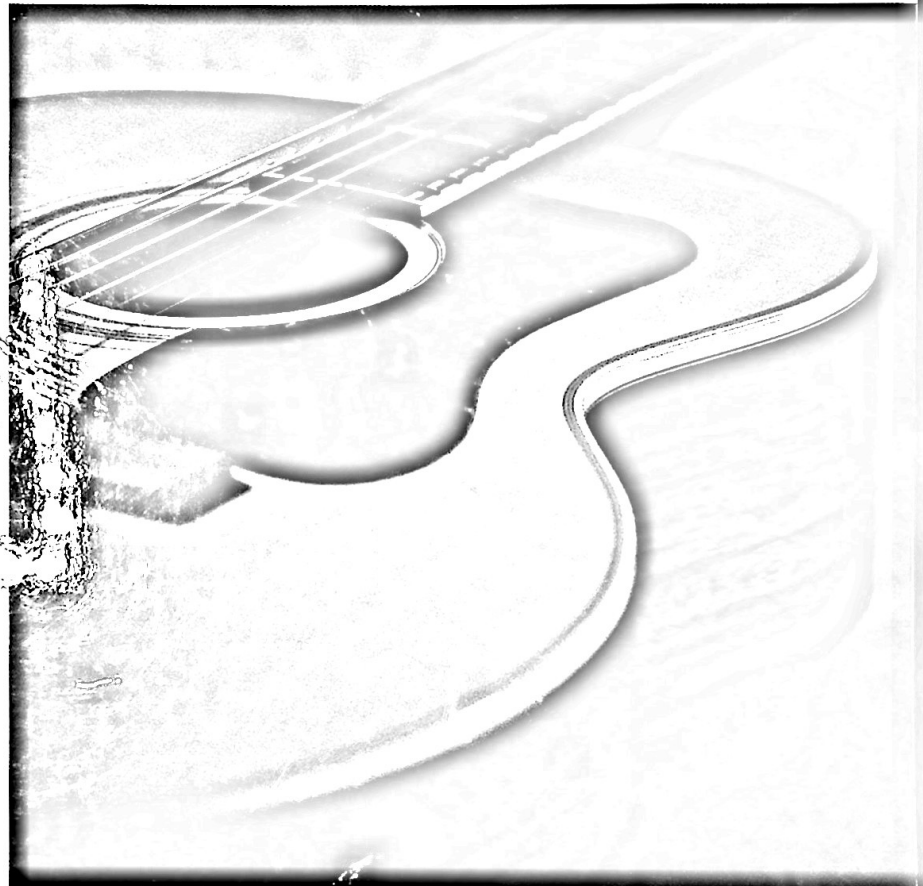


GUITAR BOOK 1

ESSENTIAL ELEMENTS[®] FOR GUITAR

COMPREHENSIVE GUITAR METHOD



**WILL SCHMID
BOB MORRIS**

 **HAL•LEONARD[®]**
CORPORATION

GETTING STARTED

Rest Position

It is important to keep the guitar silent when the teacher is speaking to the class.

Follow the directions below when instructed to go to the Rest Position.

- Lay the guitar flat across your lap with the strings facing down.
- Lay your hands on the back of the guitar.
- Stay quiet and still until the teacher asks you to go to the Playing Position.



Playing Position

There are several ways to hold the guitar comfortably. Pictured here are two typical seated positions. Observe the following general guidelines in forming your playing posture.

- Position your body, arms, and legs in such a way that you avoid tension.
- If you feel tension creeping into your playing, you probably need to reassess your position.
- Tilt the neck of the guitar slightly upwards—never down.
- Avoid slanting the top of the guitar so that you can see better. Balance your weight evenly from left to right. Sit straight (but not rigid).



Tuning

Tuning means setting the correct pitch (highness or lowness of sound) of each string. To tune your guitar, you will adjust the pitch of each string by turning the corresponding tuning key on the head of the instrument. Tightening a string raises a pitch, and loosening it lowers the pitch. See page 92 for different tuning methods.

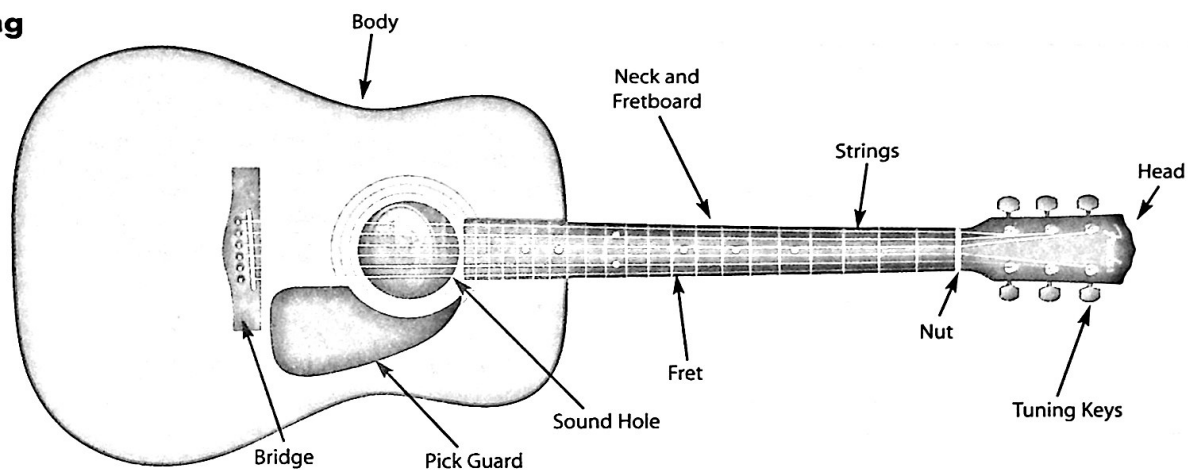
The strings are numbered 1 through 6 beginning with the thinnest string (the one closest to your knee). Tune each string in sequence by listening to the correct pitch and slowly turning the tuning key until the sound of the string matches the pitch.

YOUR GUITAR

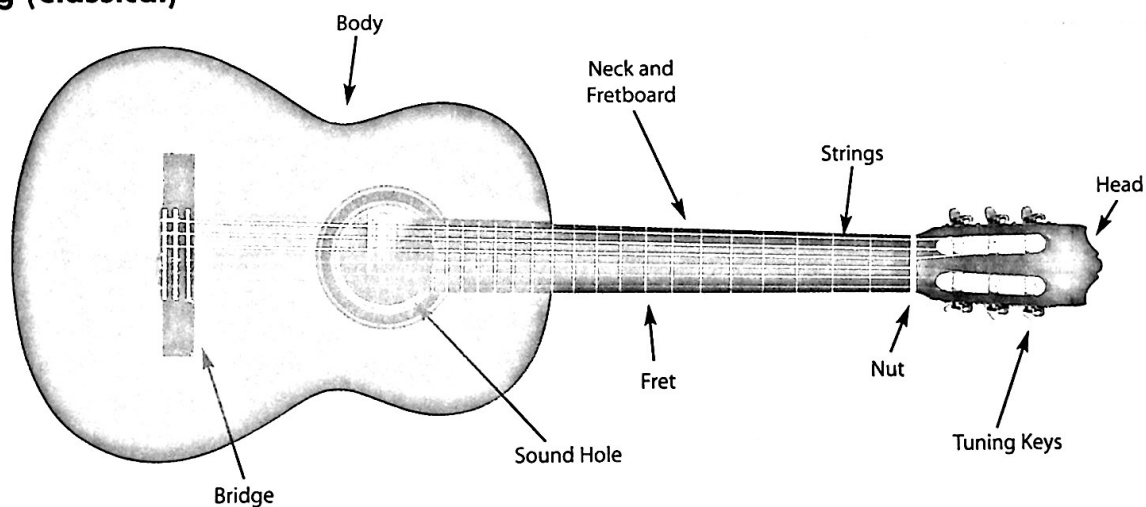
This book is designed for use with any type of guitar—acoustic or electric. Any of these guitars can be adapted for use in a wide variety of styles of music. Take some time getting familiar with the individual parts of your guitar as shown on this page.

ACOUSTIC

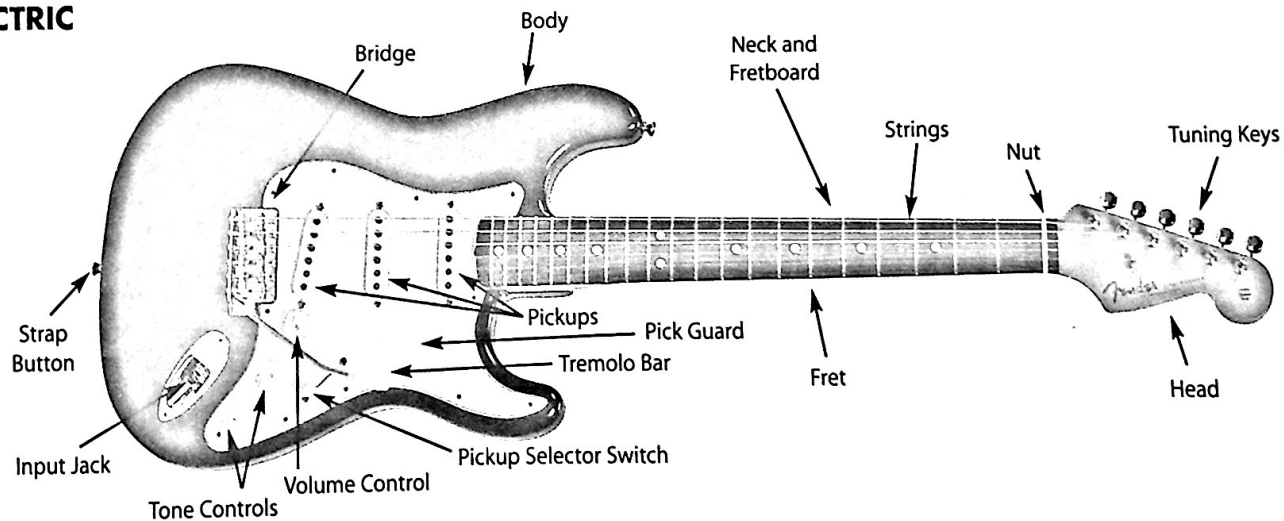
Steel-String



Nylon-String (Classical)



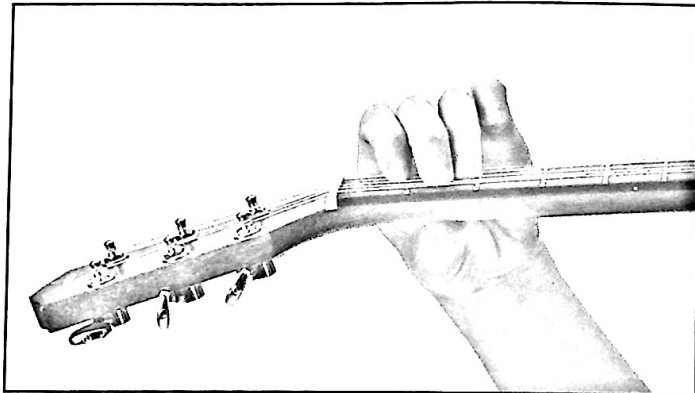
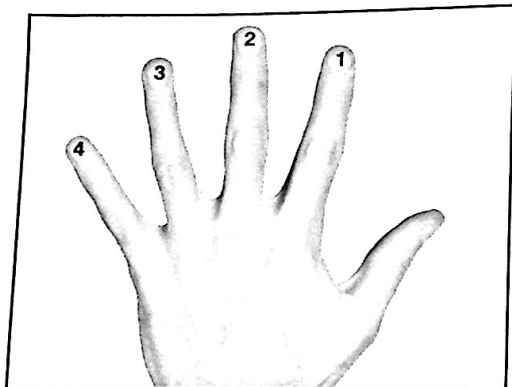
ELECTRIC



PLAYING CHORDS

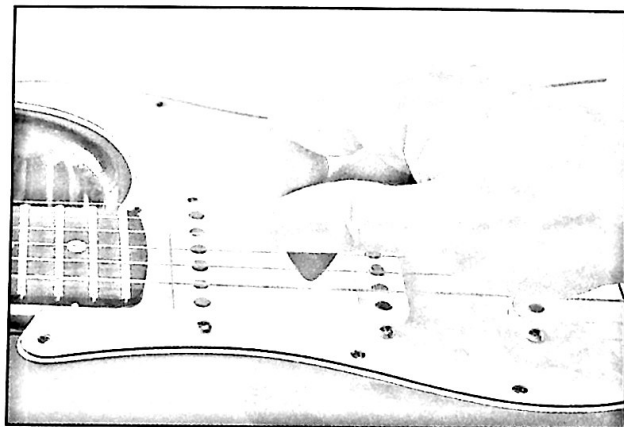
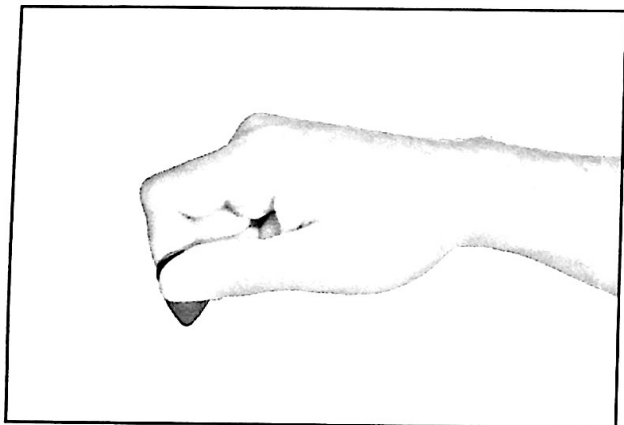
Left-Hand Position

Left-hand fingers are numbered 1 through 4. (Pianists: Note that the thumb is **not** number 1.) Place your thumb on the underside of the guitar neck and arch your fingers over the fingerboard. Position your thumb roughly the opposite of your 2nd finger. Avoid touching the guitar neck with your palm.



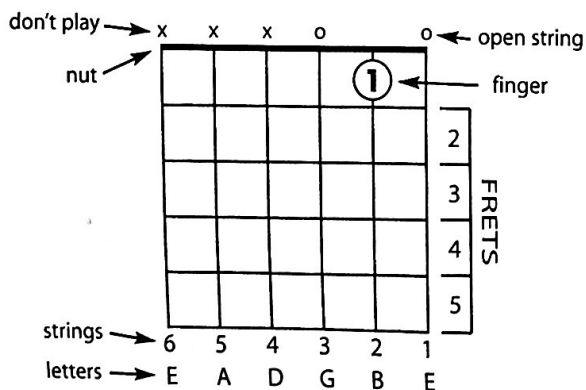
Right-Hand Position

When you play, you'll be striking the strings with either your thumb or with a pick held in your right hand. To hold the pick properly, grip it between your thumb and index finger.



Chords & The Chord Diagram

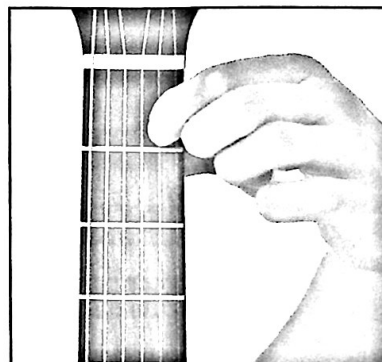
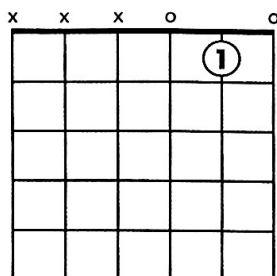
A chord is sounded when three or more strings are played at the same time. Your first two chords will be the C and G7 chords. Begin by looking at the chord diagram below to understand how these chords will be played. An "O" shown above a string indicates that the string should be played "open," or without a finger on the string. An "X" indicates that the string should not be played. Memorize the parts of the chord diagram including string numbers and letter names.



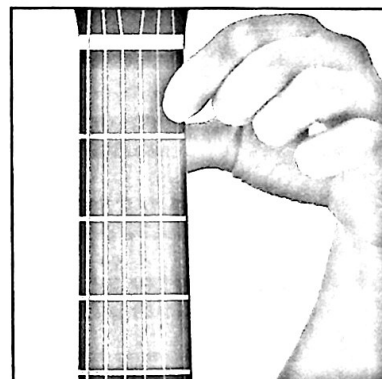
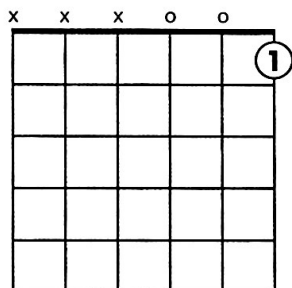
PLAYING CHORDS

Study the photos and diagrams below to begin playing chords. Depress the string indicated with the tip of your 1st finger. Arch your finger to avoid touching strings that are to be played open. With your right hand holding the pick over the soundhole, strum across strings 3 through 1 in a downward motion. Or you may strum the strings with your thumb. The full versions of the C and G7 chords can be found on pages 23 and 25, respectively.

C Chord



G7 Chord



STRUM BUILDER 1

When the chords are used as accompaniment to singing, they must be strummed with a steady, even stroke. Practice the following exercises by strumming once for each slash mark (/), and changing chords when indicated above the slashes. Repeat the patterns several times while focusing on playing clear and evenly spaced chords.

1. A PERFECT PAIR

C

G7



2. ROLLING ALONG

C

G7

C

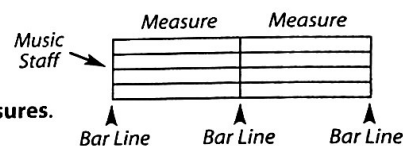
G7

C



PLAYING CHORDS

THEORY

Beat = The Pulse of MusicThe **beat** of music should be very steady, just like your pulse.**Quarter Note** ♩ = 1 Beat of Sound**Notes** tell us how high or low to play, and how long to play.**Music Staff**The **music staff** has 5 lines and 4 spaces.**Bar Lines****Bar lines** divide the music staff into **measures**.**Measures**The **measures** on this page have four beats each.

Now let's try strumming the C chord and singing a tune. The teacher should sing the melody for the class the first time through and then the class is encouraged to join in. Follow the slashes above the music staff for strumming. Read the music from left to right, as you would read words in a book. Don't worry about the music symbols you haven't seen yet, just sing along with your teacher. Soon you'll learn more about what they mean.

3. ARE YOU STRUMMING?

C



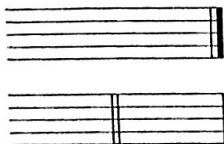
Are you strum - ming? Are you strum - ming? Yes I am. Yes I am.



I am a gui - tar - ist. I am a gui - tar - ist. Watch me jam. Watch me jam.

Time Signature (Meter)

$\frac{4}{4}$ 4 beats per measure
 $\frac{4}{4}$ ♩ gets one beat

The **time signature** tells us how many beats are in each measure and what kind of note gets one beat.**Double Bar**A **double bar** indicates the end of a piece of music or a transition within the music.

THEORY