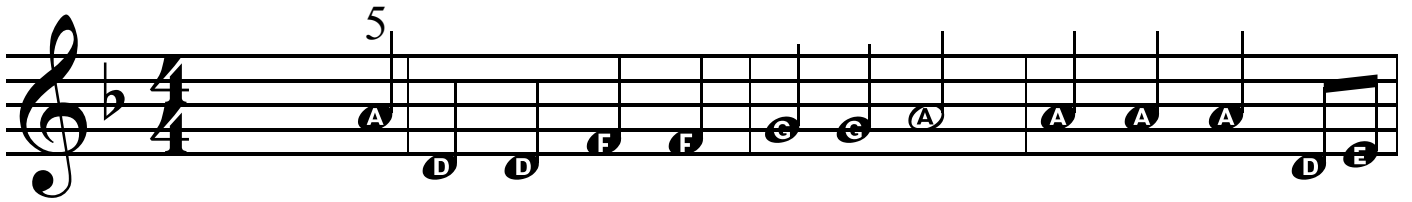
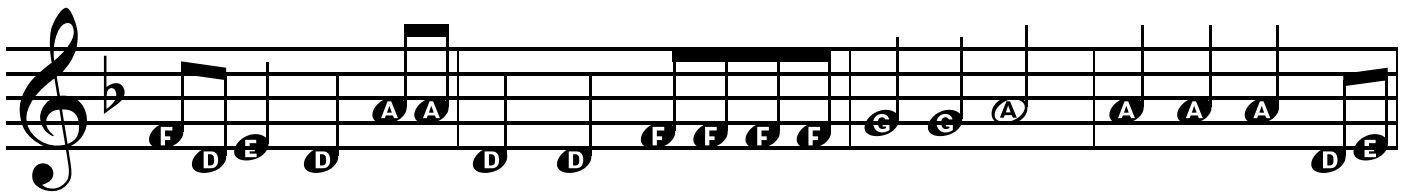


Erie Canal

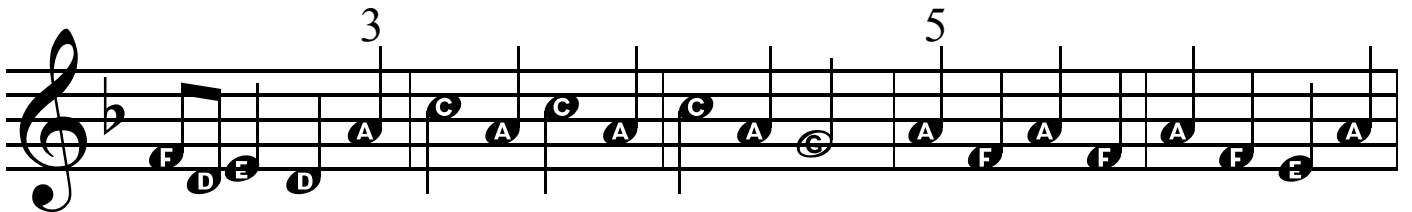
Thomas S. Allen



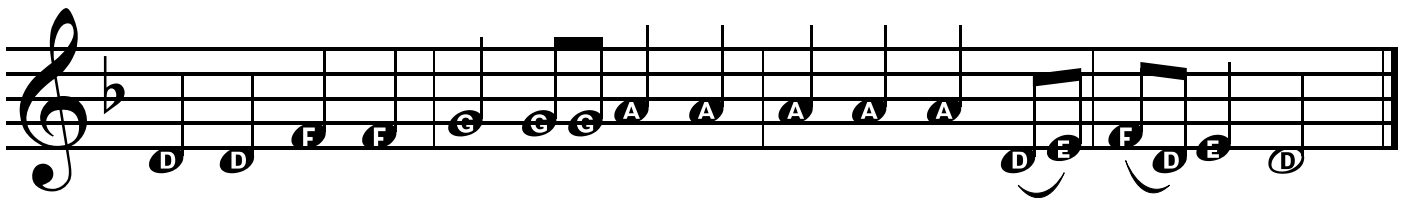
I've got a mule, her name is Sal, Fif-teen miles on the



E-rie Ca-nal. She's a good old wor-ker and a good old pal, Fif-teen miles on the



E-rie Ca-nal. We've hauled some barges in our day, filled with lumber, coal, & hay; and



we know ev-'ry inch of the way, from Al - ba - ny to Buf - fa - lo.