

Erie Canal

Thomas S. Allen

Dm Gm A Dm

I've got a mule, her name is Sal, Fif-teen miles on the

A Dm Gm A Dm

E-rie Ca - nal. She's a good old wor-ker and a good old pal, Fif-teen miles on the

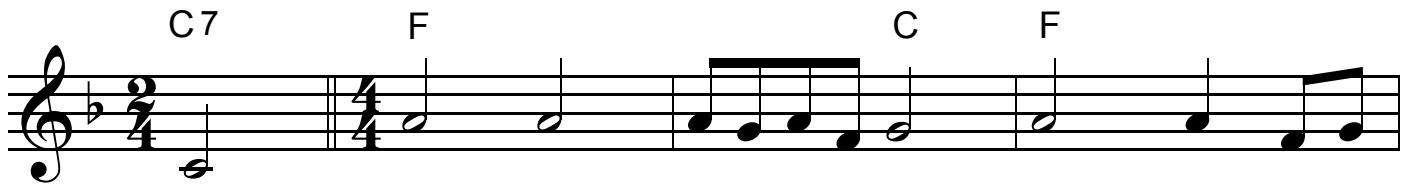
A Dm F C Dm A

E-rie Ca-nal. We've hauled some barges in our day, filled with lumber, coal, & hay; and

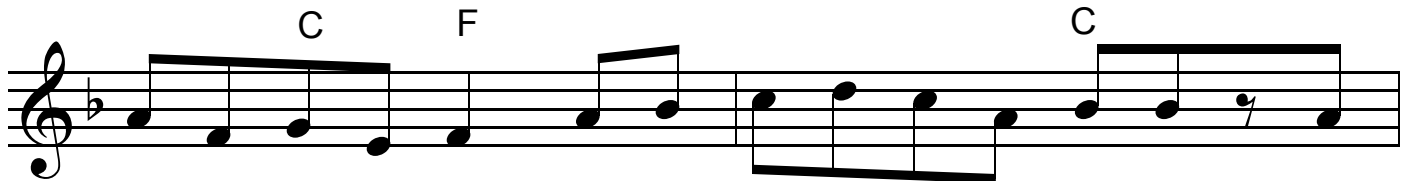
Dm Gm A Dm A Dm

we know ev- 'ry inch of the way, from Al - ba - ny to Buf - fa - lo.

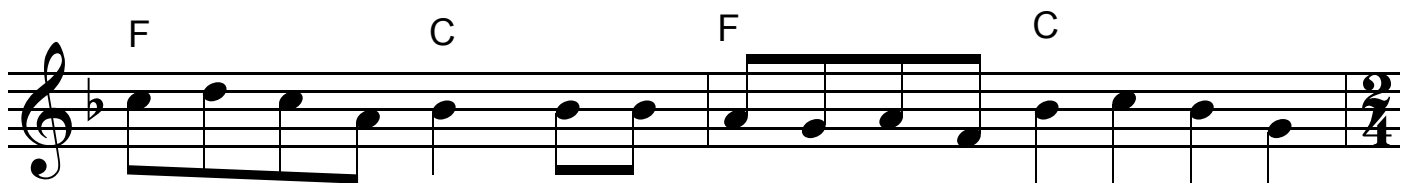
Erie Canal



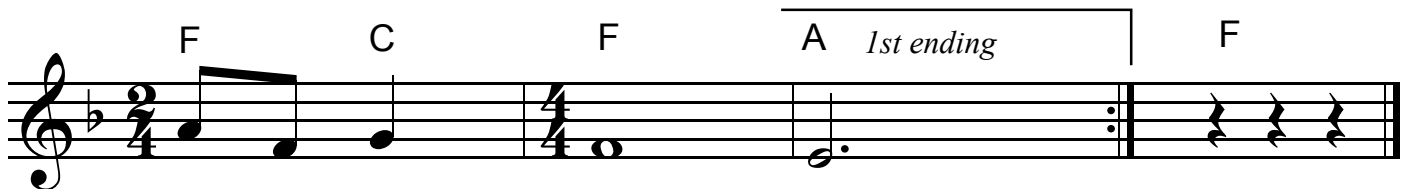
Chorus: Low bridge, ev-'ry- bo -dy down Low bridge, for we're



com -ing to a town. And you'll al - ways know your neigh-bor, You'll



al-ways know your pal, If you've e - ver nav - i - gat - ed on the



Er - ie Ca - nal.

Get up there Sal, we've passed that lock,
Fifteen miles on the Erie Canal
And we'll make Rome before six o'clock
Fifteen years on the Erie Canal

One more trip and back we'll go
Through the rain and sleet and snow
And every inch of the way I (we) know
From Albany to Buffalo

Low bridge, everybody down
Low bridge...