

Pollution Cards : Print out the full sheet and then cut out each one separately

Pesticide Use

Pesticide: substance used for destroying insects that are harmful to farms



Fertilizers

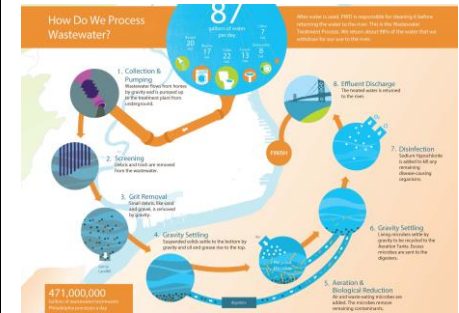
A chemical or natural substance added to soil to make plants grow faster and stronger. When fertilizer gets into a waterway, algae grows and then dies and decomposes-leading to less dissolved oxygen in the water



Parking Lot Runoff



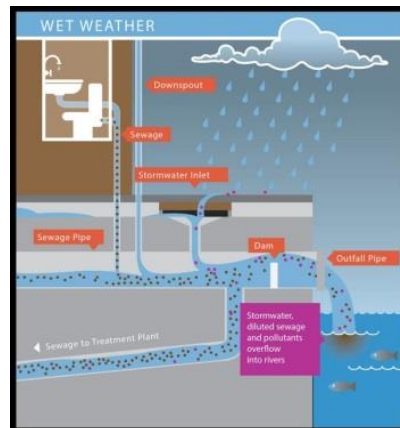
Waste Water Treatment Plant



Factory



Combined Sewer Overflow



Septic System

A Septic tank collects the sewage on-site. The sewage separates into a solid sludge that collects at the bottom and a liquid effluent flows into a leach field for final treatment by the soil.



Agricultural Farm



<div>Landfill</div> <div></div>	<div>Construction Site</div> <div></div>	<div>Hazardous Waste Storage</div> <div></div>	<div>Pet Waste</div> <div></div>
<div>Logging</div> <div></div>	<div>Suburban Housing Area</div> <div></div>	<div>Car Washing</div> <div></div>	<div>Litter</div> <div></div>

Storm Drains



Acid Mine Drainage



Urban Housing Area



Cattle Farm



Street Runoff



Gutter Runoff from Buildings



Restaurant Trash



**Auto-shop/
Mechanic**

