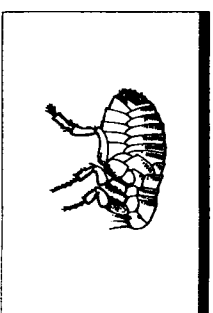
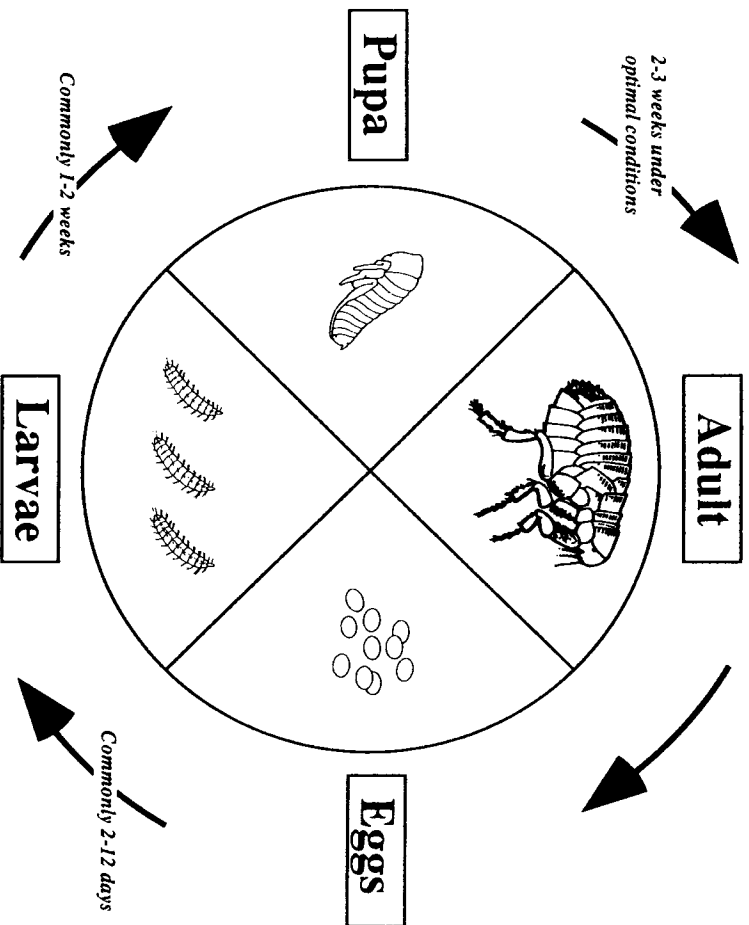


The Flea Life Cycle

■ The female lays 3-30 eggs per day after obtaining a blood meal.

■ The larvae has 3 stages. They eat debris and adult flea excreta and burrow into carpeting and floor cracks.

■ The adult can live for 6-12 months in certain conditions.



Important Life Cycle Facts:

- If one pet in a house has fleas, it can be assumed all pets in the house have fleas and, thus, all should be treated.
- During its life, the flea spends most of its time off the host, so environmental treatment is a key to winning the war.
- Besides causing severe itching, fleas can transmit parasites such as tapeworms.