

PGI HRW Harvest Report June 18, 2021

By Mark Hodges, Executive Director, Plains Grains, Inc.

<u>State</u>	<u>Percent Complete:</u>
Texas	38%
Oklahoma	19%
Kansas	7%
Colorado	0%
Nebraska	0%
South Dakota	0%
Montana	0%
Washington	0%
Oregon	0%
Idaho	0%
Wyoming	0%

6/17/2021: The 2021 HRW wheat harvest is now picking up speed as hot temperatures, wind and lower humidity prevails across most of the southern and central Great Plains. Very good yields (generally 40 bu/ac (2.69 tons/ha) to 60 bu/ac (4.0 tons/ha) and test weights (most areas above 60 lbs./bu (78.9 kg/hl) to as high as 65 lbs./bu (85.4 kg/hl) continue to be reported across much of the region. The exceptions have been those areas in central Texas that received 6” to 8” (15 to 20 cm) after the crop matured affecting test weight and final yield.

The **Texas** HRW wheat crop is now **38% harvested**, those acres are predominately in southern and central part of the state. Harvested acres remain behind the **5-year average of 55%** by this date with progress starting to pick up as cloudy cool and rainy conditions have given way to sunshine and temperatures in the mid to upper 90’s.

Oklahoma, (now **19% complete** with harvest) is also still significantly behind the **5-year average of 41% harvested** by this date and continues across from the Oklahoma/Texas border to the Oklahoma/Kansas border. Oklahoma is reporting very good yields and test weights with wide ranges of protein generally 10.5% to 11.5%.

Kansas, (now **7% complete with harvest**) and while behind the 5-year average of 7% by this date is closer to normal than Oklahoma and Texas. Yield, test weight and protein are much like those being reported in Oklahoma. Kansas has had much higher temperatures than Oklahoma or Texas recently with a heat advisory in affect through Thursday evening, June 17th for northern Kansas and southern Nebraska.

On a positive note, harvest weather continues to prevail in almost all areas of the southern and central Great Plains where harvest has begun. The first samples of the 2021 HRW crop are expected to arrive in the lab today.

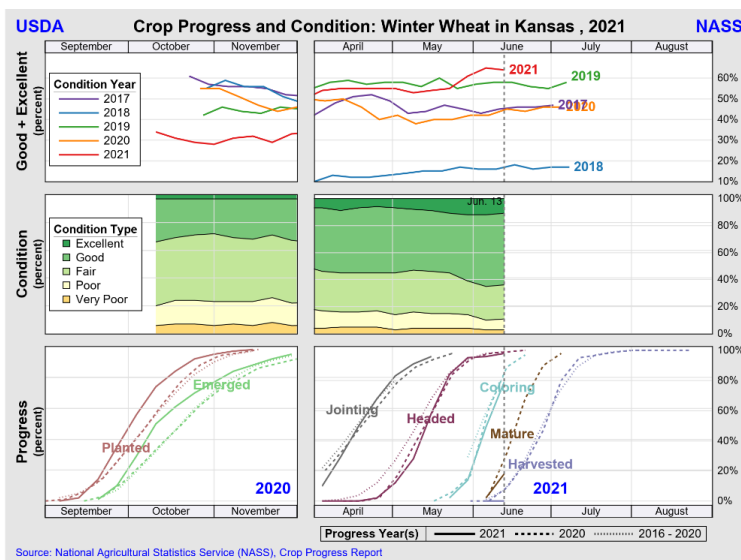
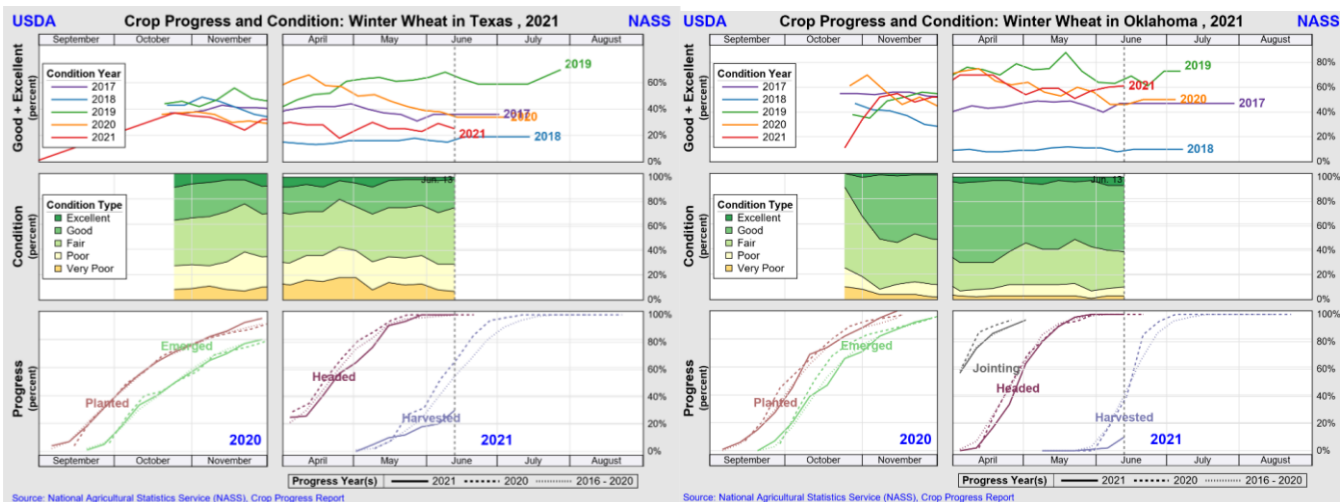
June 18, 2021

Tst	Exp	MST*	Pro %	DKG	TKW	FN	Grade	Test Weight	FM	DMG	S&B	DEF
0	500											

2020 Final

Tst	Exp	MST	Pro %	DKG	TKW	FN	Grade	Test Weight	FM	DMG	S&B	DEF
431	500	10.9	11.9	0.5	31.6	367	1HRW	61.7 81.1	0.2 0.2	1.1 1.5		

The information contained herein is provided as a public service with the understanding Plains Grains, Inc. (PGI) makes no claims, promises, or guarantees about the absolute accuracy, completeness, or adequacy of the contents and expressly disclaims liability for errors and omissions in the contents. PGI may make changes to information at any time and add to, remove, update, or correct the information provided. While PGI attempts to maintain the highest accuracy of content, it makes no representations or warranties as to the completeness or accuracy of the information and data. Individuals accessing this website will make their own determination of how suitable the information and data is for their usage and intent. In no event will PGI be responsible for damages resulting from the use or reliance upon this information and data. PGI does not warrant that the use of this information is free of any claims of copyright infringement.



State Bullet Points (abbreviated summary of information provided by the wheat industry):

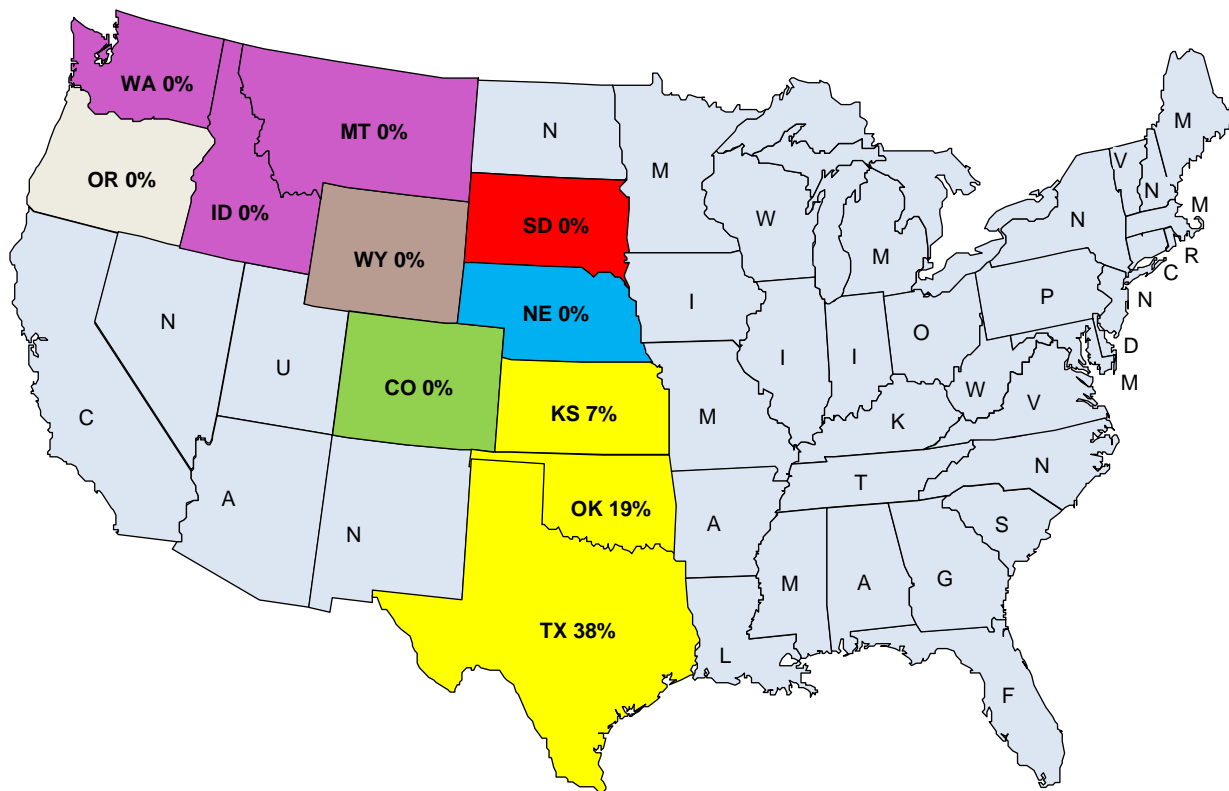
June 17, 2021

- **Texas** – Warm, most of state break from rain. Far behind schedule. Slight drop in crop ratings 2% E, 23% G, 46% F, 22% P, 7% VP. Sprout damage still prevalent. Harvesting in rolling plains. Cross timbers area, good protein, above avg. yields. High Plains area starting harvest; good yield potential. Extreme heat predicted, drying up.
- **Oklahoma** – Harvest progress in Southern/central OK. Good yield/TW reports, 60 bu/ac+. Yields in most regions mid 30’s-mid 60’s depending on variety etc., Wide range of pro in SW OK; regional avgs. 11.2% to 11.6%. Central OK - 10.5% to 11.1% pro., corridor at 11.1% to 11.2%, East of Enid and North at 10.1% to 11.8%, some 14%. Expect OK avg pro 11.2%.
- **Kansas** - Harvest progressing quick, high temps (100-105). Cutting central/SW KS. Yield 40-60 bu range, TW’s good, avg. 60 lbs but variability, some low TW. Protein reports early – slight below average but a variability with south central Kansas (10-11% protein/ 12’s from early cuttings further west.) Head scab monitored, no quality issues reported.

- **Colorado** – Full range of yields possible in CO from 0 (abandoned) - 90 bu/ac dryland wheat yield potential. Harvested SE CO 10-30 bu/acre, in NE Colorado 20 – 90 bu/ac. Hot temps (90-100) picking up past. Heat wave ending, good soil moisture. Wheat Stem Sawfly flight moderately heavy, spread to new areas is largest seen. Expecting significant harvest issues with lodged wheat due to sawfly. Russian wheat aphids, esp. SE CO. Stripe rust was sprayed for, minimal impact expected. Small pockets of Cephalosporium Stripe becoming consistent year to year in far northeast. NASS increase by 15% from 57 mln bu to 66 mln bu.
- **Nebraska** – USDA has 51 bu/ac; est. closer to 47/48 bu/ac. Extreme heat (108 degrees); cool temps over the weekend. Low disease pressure, some stripe rust, bacterial streak, minimal head blight. Est. 1 week behind.
- **Wyoming** – NASS has 20% headed. Temps in mid-90s; unseasonably hot. 28% G-E, 60% fair. 1 week behind. Expect test cutting 20th of July.
- **Idaho** – Extreme heat mixed with unseasonably cold. Southern part of state extreme dry. Some rain in northern part of state. Possible increase pests, no disease issues reported. Winter wheat harvesting early (slow growing cycle).
- **Washington** - Very dry. 81% very poor to fair for winter wheat. Spring wheat worse. Subsoil moisture 69% short to very short. Sporadic rainstorms took place during week. Harvest to get started 1-2 weeks early as winter wheat headed is ahead of normal.
- **Oregon** – NASS slight improvement, but conditions still same. Very dry. Some rain, but late in the year. Stressed crop across state. Winter wheat starting to turn. Disease pressure low.

Percent HRW Harvested by State

June 18, 2021



Previous 7 Days Precipitation (Ending June 17, 2021)

Displaying Last 7-Day Observed Precipitation
Valid on: June 17, 2021 12:00 UTC

[Print this map](#) [Permalink](#) [Download and Show](#)

[What is UTC time?](#)

[Map Help](#)

Find address or location

