

# OPERATING RULES



**SUPER  
LEAGUE  
BASKETBALL**

# INDEX

Rule No. Title

Definitions and Interpretation

## LEAGUE GOVERNANCE

- 1 Operating Rules
- 2 Governance Framework
- 3 Terms of Appointment of the Board
- 4 Meetings of the Board
- 5 Meetings and Decisions of the Shareholders

## CLUB GOVERNANCE

- 6 Ownerships
- 7 Administration and Registration
- 8 Finance and Compliance
- 9 Payments Due to SLB
- 10 Team Payments Regulations
- 11 Governance and Performance Objectives
- 12 Conduct and Collaboration
- 13 Participation in Non SLB Competitions

## COMPETITIONS

- 14 The Competitions
- 15 Trophies
- 16 Match Facilities
- 17 Fixtures
- 18 Guest Admittance
- 19 Uniforms
- 20 During the Event
- 21 Match Regulations
- 22 SLB Hosted Events

## PLAYERS

- 23 National Status and Player Eligibility
- 24 Contract and Transfer System
- 25 Licensing

## MATCH OFFICIALS

- 26 Match Officials
- 27 Role of Officiating Supervisors

## MEDIA AND BROADCAST

- 28 Media
- 29 Broadcast and Related Rights

## ADVERTISING AND SPONSORSHIPS

- 30 Branding/Advertising at Home Venue
- 31 Sponsorships

## DISCIPLINE, PENALTIES, AND APPEALS

- 32 Protests
- 33 Discipline
- 34 Appeals

## COPYRIGHT

- 35 Copyright

## APPENDICES

- App A Register of Interest and Related Parties
- App B Fit and Proper
- App C Compliance Statements
- App D Officials Fees and Expenses
- App E Disciplinary Panel Procedures
- App F Automatic Penalties
- App G Code of Conduct
- App H Code of Ethics
- App I Internal Anti-Doping Regulations
- App J Betting and Corruption
- App K Zero Tolerance Code of Conduct
- App L Guidelines for Announcers
- App M Courtside Boards
- App N Disciplinary Guidelines
- App O Protests and Discipline Timelines

# **SUPER LEAGUE BASKETBALL LIMITED**

## **DEFINITIONS AND INTERPRETATION**

In these rules (unless the context requires otherwise) the following expressions shall have the following meanings:

"Administrative Work" &  
"Promotional Work"

activity essential to the running of the club, including clerical, promotional and managerial as necessary. Promotional aspects will include any activities at the direction of the club with the purpose of promoting the club's image and its identity through attendance at functions, gatherings, events and media opportunities.

"Annual Budget"

means the annual budget of SLB, as developed in accordance with any Shareholders' Agreement.

"Approved Contract"

means either a Standard Contract or a non-standard contract which contains a Standard Appendix and Certificate of Contract.

"Arena"

the term shall mean the area within the home venue within which the game is played and watched by the audience and includes therein, but not limited to, the court floor area, backboards, all court-side or perimeter boards, chairs, scoreboards, seats, stands, walls, ceilings, backdrops, interview, media or corporate hospitality areas or any other static or moving objects.

"The BBF"

The British Basketball Federation, a company incorporated in England and Wales under No. 06144448 whose registered office is at 100 c/o Brabners LLP, Barbirolli Square, Manchester, England, M2 3BD and who is the national governing body for Olympic basketball in the UK, and the National Member Federation of FIBA.

"The Board"

means the Board of Directors of SLB.

"Business Plan"

means the business plan of SLB, as developed in accordance with any Shareholders' Agreement.

"Certificate of Contract"

means a schedule used to certify that a contract between the Player and Club has been agreed.

"Championship"

means the Championship competition under the control of SLB.

"Clean Arena"

shall mean that the Arena shall be free from commercial or promotional messages, whether by public address or otherwise, advertising, displays, signage, banners or messages of any kind, except for those authorised by SLB.

"Club"

means the professional basketball clubs that are shareholders of SLB and compete in the League.

"Club Administrator"	means a person designated by a Club to be responsible for the administration of the Club.
"Club Representative Director"	means a director of SLB appointed to the Board by the Clubs in accordance with these Operating Rules.
"Commercial Director"	means the Commercial Director of SLB.
"Competition Licence"	means a licence issued by the SLB to a player, coach or team follower, in accordance with the rules and regulations of the SLB, and which entitles the holder to represent the Club specified thereon in the Competitions.
"The Competitions"	means the basketball competitions under the control of SLB.
"COO"	means the Chief Operating Officer of SLB.
"Development Work"	the undertaking of clinics, where clinic means a properly organised teaching session at a school, club, leisure centre, basketball camp or similar institution.
"Domain"	means an area of Great Britain in respect of which the Franchise Committee is empowered to grant a Franchise.
"Domain Map"	means the plan of Great Britain on which every Domain for which a Franchise is in issue is depicted.
"Emoluments"	means all wages, salaries, bonuses, signing on fees, offered or paid by the Club, its sponsors, the holding company, the Owner, associated person or other organisation and any other party or organisation in which they have a direct or indirect financial interest to the players and any associated person or organisation thereto of the team playing in the Competitions and shall include all incentives offered to the players, irrespective of whether subsequently earned or not. This shall include any and all payments, to the player or any party related to the player, irrespective of whether a player has a separate contract to participate in local, national, European or international competitions for the Club. This shall exclude tax, employee's national insurance, and Benefits in Kind as defined by H M Revenue and Customs.
"Franchise Agreement"	means an agreement between SLB and a Club which grants that Club the right to operate a Club and compete in the League.
"Home Club"	means the Club at whose home venue any match takes place.
"Home Country Associations"	means each of Basketball England, Basketball Scotland and Basketball Wales.
"Independent Director"	means a director of SLB appointed to the Board by the Board in accordance with a Shareholders' Agreement.
"The League"	means, the professional men's basketball league competition in Great Britain.



"Match Officials"	means Referees, Table Officials, Statisticians and a Commissioner, where appointed.
"Owner"	means any individual that owns shares in a company that controls and manages the affairs of a Club.
"Promoter"	means a person nominated by a Home Club to be responsible for all aspects of each match, except the playing of the match, being a person not holding any other official capacity at the match.
"Referees"	a Crew Chief, and one or two umpires appointed to a match.
"Representative"	means a person nominated by each Club to represent their interests before, during and after a match.
"Shareholders"	means the shareholders of SLB (being the companies that control and manage the affairs of each Club (and is duly recognised as such by SLB).
"Shareholders' Agreement"	means any written agreement from time to time which the Shareholders and SLB are party to, relating to the interests in and the business and affairs of SLB.
"SLB"	means Super League Basketball Limited (company registered number 15809301).
"Standard Appendix"	means an appendix to a contract of employment of a standard form as issued and approved by SLB.
"Standard Contract"	means a contract of a standard form as issued and approved by SLB.
"Statement of Emoluments"	means the submission of Emoluments prepared by a Club for use in determining the level of compliance with the Team Payments Cap.
"Statisticians"	means the statisticians appointed to a match.
"Table Officials"	means a scorer, a timekeeper, a shot clock operator, and an assistant scorer where present appointed to a match.
"Team Payments Cap"	means the maximum total Emoluments permitted to be paid by each Club in respect of the players who hold Competition Licences entitling them to represent that Club at any time during a season.

Singular shall include plural and vice versa.

The masculine gender shall include the feminine and neutral genders.

A reference to a 'person' includes a natural person, corporate or unincorporated body (in each case whether or not having separate legal personality) and that person's personal representatives, successors and permitted assigns.

A reference to a 'company' includes any company, corporation or other body corporate, wherever and however incorporated or established.

# **SLB GOVERNANCE**

## **1 OPERATING RULES**

- 1.1 These Operating Rules have been approved by the Shareholders of SLB and shall apply to the Competitions and every Club.
- 1.2 Changes to these Operating Rules which are immaterial changes or changes required in order to comply with any requirement of applicable law, the BBF, FIBA or any other applicable basketball governing body will be carried out by SLB and circulated to each Club Administrator.
- 1.3 Other changes to these Operating Rules require a simple majority of the Clubs at any time using the following process:
- (a) A proposed rule change should be notified to the COO by the Club Administrator.
  - (b) The COO will consider the rule change and will
    - a. redraft the rule and circulate to each Club Administrator for response, or
    - b. will provide a rationale as to why the rule does not require amendment and circulate to each Club Administrator for information.
  - (c) All Club Administrators of Clubs must respond to a proposed rule change within the required timescale indicating whether the Club approves, rejects, or abstains.
  - (d) If the proposed rule change is raised at a meeting, this procedure may be completed verbally if all Clubs entitled to vote are in attendance.

Any alteration shall be notified to every Club Administrator within 14 days by email.

- 1.3 It is a condition of the Franchise Agreement, or applying to operate a Club, or of taking part in the Competitions, that the Officers, Owners, Club Administrator, Promoter, Representative, and Players of every Club agree to:
- (a) abide by these Operating Rules; and
  - (b) fulfil any obligations arising out of any contract entered into by SLB as if they were each a party to such contract, including, but not limited to, any obligation related to sponsorship or television rights.
- 1.4 The management and control of the Competitions is vested in the Board of SLB which is empowered to implement these Operating Rules.
- An alleged breach of the Operating Rules, Articles of Association, or Franchise Agreement should be reported to the COO at the first opportunity.
- 1.5 SLB has the right to investigate any Club alleged to have breached the SLB Operating Rules or the Franchise Agreement and SLB will have the power and authority to impose sanctions and/or fines on any Club or Player found guilty of such a breach and/or (in the case of Clubs) terminate the Franchise Agreement of the Club in question.
- 1.6 Certain breaches of the Operating Rules result in sanctions and/or fines that will be automatically applied without investigation, subject to the warning system detailed in Rule 1.7. **These Rules are clearly marked.** [See Appendix F.](#)
- 1.7 Any Club that is found to be in breach of the Operating Rules will be issued with a warning for each individual breach. Once a Club has been issued with two warnings in any two-year rolling period, any subsequent infringement will result in the issue of a fine.
- 1.8 Any Club that incurs a fine while it has money owed to it by SLB may choose to deduct its fines from the monies owed.

## **2 SLB GOVERNANCE GOVERNANCE FRAMEWORK**

- 2.1 The following parties are responsible for the Governance of SLB:
  - (a) the Board;
  - (b) the Shareholders; and
  - (c) the Officers of SLB.
- 2.2 The Board shall be responsible for the day-to-day administration and management of the affairs of the Company.
- 2.3 The Board shall approve the Business Plan and Annual Budget and, not later than 45 days before the end of each financial year of SLB, consider the Business Plan and Annual Budget for the following financial year and deliver the same to the Shareholders together with such other information as the Shareholders may request for the purpose of reviewing the Business Plan and Annual Budget.
- 2.4 A register of interests and related parties will be maintained by the Company Secretary and will be updated based on information disclosed by the Directors and Shareholders.
- 2.5 In the event of any ambiguity or discrepancy between the provisions of these Operating Rules and any Shareholders' Agreement or SLB's articles of association, the provisions of the Shareholders' Agreement or SLB's articles of association shall prevail and the relevant rule(s) will be amended so as to give effect to the relevant provision of the Shareholders' Agreement or article.

## **SLB GOVERNANCE**

### **3 TERMS OF APPOINTMENT OF THE BOARD**

- 3.1 SLB will recruit and appoint individuals with appropriate independence, skills, experience, knowledge, and diversity to take effective decisions that further the SLB's strategic objectives.
- 3.2 Prior to appointment as a Director of SLB, the individual must complete a Fit and Proper declaration. [See Appendix B.](#)
- 3.3 If at any point during the term of their appointment, an individual no longer meets the criteria to be classed as 'Fit and Proper', they shall notify the COO.
- 3.4 If an individual fails to meet the requirements to be classed as Fit and Proper, the Shareholders may allow the appointment to proceed at their discretion.
- 3.5 An Independent Director shall be appointed for a period of three years at the expiration of which they will be eligible for reappointment. They may serve a maximum of three terms.

## **4 SLB GOVERNANCE MEETINGS OF THE BOARD**

- 4.1 Board meetings shall be held no less than four times every year.
- 4.2 The Officers of SLB shall be invited to attend meetings of the Board.
- 4.3 The Board SLB may invite External Parties to Board Meetings at their discretion but the External Parties shall not have a right to vote on any issue at any such meeting and any External Party attending any such meetings will be required to withdraw from the meetings when any confidential agenda items are discussed.
- 4.4 The Company Secretary will provide the register of interests to the Chairperson in advance of the meeting. All interests should be updated prior to each meeting commencing.
- 4.5 If a Board member thinks they may be conflicted they should raise this ahead of the relevant discussion or decision. Any conflicts of interest will be dealt with in accordance with any Shareholders' Agreement and SLB's articles of association.
- 4.6 All meetings of the Board shall include the following items:
  - (a) Update of the Register of Interests;
  - (b) Notification of pending legal issues.
- 4.7 Minutes of meetings of the Board and its Committees will be available to the Shareholders on request.

## **5 SLB GOVERNANCE MEETINGS AND DECISIONS OF THE SHAREHOLDERS**

- 5.1 Decisions requiring Shareholder approval may be undertaken:
  - (a) by meeting, which need not necessarily be in person; or
  - (b) by written resolution, where this is permitted under the Companies Act 2006.
- 5.2** Shareholder meetings shall be held at least four times a year and as otherwise determined by the Board. A fine will be levied on a Club should they fail to attend a Shareholder meeting (either in person or remotely).
- 5.3 A maximum of three representatives from each Club may be in attendance at a Shareholder meeting.
- 5.4 A Club must designate a Lead representative, and an Alternate representative no later than 24 hours before the published start time of the meeting.
- 5.5 The Officers of SLB shall be invited to attend Shareholder meetings.
- 5.6 The Board of Directors shall be invited to attend Shareholder meetings.
- 5.7 Voting rights will be in accordance with the rights set out in any Shareholders' Agreement and SLB's articles of association.

## **6 CLUB GOVERNANCE OWNERSHIPS**

6.1 No person will be able to be an Owner of a Club should that person:

- (a) have owned a professional sports club in Great Britain that was subject to an Insolvency Event within the last five (5) years;
- (b) have been declared bankrupt within the last five (5) years;
- be currently disqualified or previously disqualified from being a company director; or (c) have an unspent conviction for certain specified offences;

6.2 No person can have:

- (a) an equity stake in or control of SLB and any Club; or
- (b) an equity stake of more than 5% (five per cent) in more than one (1) Club or control of more than one (1) Club.

## CLUB GOVERNANCE

### 7 ADMINISTRATION AND REGISTRATION

7.1 Each Club shall register with SLB the names of the Influential People (as defined in [Appendix B](#)) and shareholders of that company, including the details of the shareholdings and the beneficial owner.

**7.2** The Club shall submit a copy of its memorandum and articles of association and any subsequent modifications to those memorandum and articles of association within 7 days of the amendment being approved.

7.3 No Club shall be entitled to become a member of SLB, or to take part in the Competitions, unless it has registered SLB the names required under [Rule 7.1](#) and SLB has approved those names in writing.

7.4 If a Club proposes to change the names registered under [Rule 7.1](#), it shall:

- (a) For directors and other influential people (see Appendix B), complete and pass a Fit and Proper Person Declaration, which needs to be filed and approved by SLB prior to the appointment being made.
- (b) For shareholders with an equity stake of more than 5%, give prior notice thereof to SLB and any such change shall require the approval of SLB.

If such a change takes place without the prior approval of SLB, the Club shall immediately cease to be entitled to take part in the Competitions or be a member of SLB.

7.5 If a Club proposes to change the shareholdings registered under Rule 7.1 in any way, it shall give prior notice thereof to SLB.

7.6 The name of the Club Administrator shall be registered with SLB. All actions of the Club Administrator are deemed to carry the full authority of the Club, unless and until such time as an action may be countermanded by a mandate supported by the Owner. A Club is deemed to be responsible for actions by its Club Administrator and management relating to basketball, e.g. public statements, letters to the media, approaches to players licensed to play for other clubs etc.

**7.7** A Club Administrator shall only be appointed or dismissed by a majority of the Owners of a Club and any such appointment or dismissal shall be notified by the Owners to SLB within 2 days of its occurrence. If the post of Club Administrator becomes vacant, the Owners of the Club shall appoint a successor immediately.

7.8 All operational communications between the Club and SLB will be conducted through the Club Administrator.

7.9 The Club Administrator is responsible for ensuring that information is disseminated to the Club in accordance with each Club's internal policies.

7.10 Communication will primarily be by email, and the Club Administrator shall provide SLB with a secure email address for all SLB Club communications.

7.11 The Club consents to the Club Administrator email address being disclosed by SLB to other Club Administrators, and other External Parties as necessary.

7.12 Each Club should be affiliated to its respective Home Country Association.



- 7.13 No nursery team, second team, or Club having any official or unofficial obligation to or connection with another Club is permitted to participate in the Competitions.
- 7.14 If a Club ceases to exist, or an Owner who is a company ceases to trade whilst a member of SLB, or an Owner ceases to be a member of SLB, or a Club withdraws from the Competitions without fulfilling all its obligations to SLB and/or to other Clubs, all the Competition Licenses of the Club shall be automatically forfeited and shall be disposed of in whatever way SLB deems to be appropriate, which may include meeting the existing liabilities of the Club to SLB and/or to other Clubs and/or to any other organisation.
- 7.15 Where:
- (i) a Franchise Agreement is assigned, novated or transferred, or
  - (ii) a Franchise Agreement terminates or expires and a new Franchise Agreement is entered into
- any unsatisfied creditors of the party which assigned, novated or transferred the Franchise Agreement, or held the Franchise Agreement at its expiry or termination, shall become creditors of the assignee, novatee, transferee or new franchisee in respect of such outstanding debts.
- 7.16 SLB shall monitor and continue to monitor any and all unscrupulous and/or vexatious claims and allegations directed at SLB by a Club including any claim determined to be unfounded by a court. Should SLB be subject, in its reasonable opinion, to unscrupulous and/or vexatious allegations or claims, it may take any action it deems necessary against the Club including, but not limited to, the removal of the Club from participating in, and being a franchisee, of SLB.
- 7.17 The benefit of any limitation to the liability of SLB under the Franchise Agreement shall apply equally to these Operating Rules such that the cumulative liability of SLB in respect of all claims made by any individual Club shall be limited to any limits of liability stipulated in the Franchise Agreement (including the payment of any liquidated damages payable under the Franchise Agreement), and in any event shall not exceed £150,000.00 in aggregate. Nothing in these rules shall limit the liability of SLB in any way in respect of death or personal injury caused by negligence; fraud or fraudulent misrepresentation; or any other losses which cannot be excluded or limited by applicable law.

## **8 CLUB GOVERNANCE FINANCE AND COMPLIANCE**

**8.1** As requested by SLB, all Clubs will submit for review and approval long term (minimum 3 years) business plans that show how they will comply with the terms of the Franchise Agreement and the SLB Operating Rules.

**8.2** Each Club must advise SLB of the date on which its Club's financial year ends. Within 6 months of the end of each financial year, each Club must submit a copy of their financial statements to the Chief Operating Officer of SLB.

If the financial statements do not separately identify the finances of the Club, the Club must also submit a profit and loss account and balance sheet that discloses the financial performance of the Club's activities.

**8.3** All Clubs agree to submit to open book financial health checks self-assessment by SLB, on a yearly basis, and agree to adhere to the timeline specified by SLB.

**8.4** Each Club shall hold a minimum of £2 million insurance cover for public liability. A copy of the certificate should be filed with SLB.

**8.5** Each Club agrees to complete Compliance Statements as requested by SLB that allow SLB to monitor the Club's Governance and Performance Objectives.

Should any of the requirements of [Rules 8.1 – 8.5](#) fail to be met, the club shall be liable for suspension from all Competitions until the requirement of which they are in breach is met. This is in addition to the automatic fine that shall apply.

Persistent breaches of [Rules 8.1 – 8.5](#) may result in withdrawal of the Franchise.

## **9 CLUB GOVERNANCE**

### **9 PAYMENTS DUE TO SLB**

- 9.1 All monies due to SLB from Clubs (for the avoidance of doubt, including any loans due to SLB) are required to be settled within 30 days of becoming liable.

Any Club who fails to make payment within 14 days of a due date will be considered in default and the following measures will be applied:

- (a) If the due date falls whilst a Club is active in The Competitions:
  - i. The club will be issued with a notification by SLB of the intention to de-register a key member of their playing squad. They will be awarded a further 14-day period in which to remedy the default (cleared funds) and thus avoid any action.
  - ii. The Player selected to be deregistered will normally be the highest earning registered player, but this decision is at the discretion of the SLB COO whose decision will also be final.
  - iii. If no such remedy is forthcoming within the 14-day timescale the Player will be duly deregistered for SLB Competitions.
  - iv. The Player will immediately be reregistered for SLB Competitions on remedy of the default (cleared funds).
  - v. Should a club fail to remedy a default and then default on a subsequent payment(s), further player(s) will be deregistered for each defaulted payment in line with the process detailed in clauses (i) to (iv).
  - vi. Any club in default will not be allowed to register new players. i.e. No player Competition Licence applications may be received and no transfers may take place.
- (b) If a Club is in default whilst not active in The Competitions the following will be applied:
  - i. After 30 days the monies due will become liable to interest at the current Bank of England base rate across the length of the debt;
  - ii. After 60 days a fine will be issued to the value of 20% of the monies due.

## **CLUB GOVERNANCE**

### **10 TEAM PAYMENTS REGULATIONS**

- 10.1 SLB does not impose a fixed team payments cap. Instead, clubs' total player emoluments are monitored and used to determine registration eligibility, including limits on the number of non-national players permitted in SLB Competitions. While there is no prescribed minimum or maximum spend, defined thresholds trigger registration limitations as set out in Rule 10.2.
- 10.2 Clubs shall be subject to limits on the number of non-national players they are permitted to field in SLB Competitions during a season, based on their total declared emoluments:
- (a) Where a club's total player emoluments across the season are forecast to be between **£500,000 net (guide £1,018,950 gross) and £800,000 net (guide £1,390,200 gross)** the club may field a maximum of **five (5) non-national players** in SLB Competitions.
  - (b) Where a club's total player emoluments are forecast to **exceed £800,000**, the club may field a maximum of **four (4) non-national players** in SLB Competitions.
  - (c) Clubs may freely alternate which eligible non-national players are selected in SLB Competitions, provided the total number does not exceed **twelve (12) total non-national player registrations** across the course of the SLB season, in line with Rule 23.8.
  - (d) For the avoidance of doubt, restrictions on non-national players apply only to SLB Competitions. Clubs may select any players for European competitions, provided they meet the eligibility criteria of those competitions.
- 10.3 The calculation for any player's emoluments to be included in the Statement of Emoluments shall be:
- (i) annualised to reflect a full year's salary in accordance with their contract(s)
  - (ii) subsequently prorated to attribute the relevant portion of the salary to the SLB season.
- 10.4 The effective start for the pro rata calculation in Rule 10.3 shall be the first scheduled fixture of the SLB season.
- 10.5 The Chief Operating Officer of SLB shall administer all aspects of the Team Payments Regulations and the registration of players.
- 10.6 SLB may appoint an Independent Auditor to investigate any alleged breaches of the Team Payments Regulations or for routine audits of the submissions made by Clubs. The Independent Auditor will take direction from the Chief Operating Officer of SLB and report their findings to the Chief Operating Officer.
- 10.7 Each Club shall, a minimum of 7 days before the start of the season or by such earlier date as may be specified by the Chief Operating Officer, supply to the Chief Operating Officer a legally binding Statement of Emoluments proposed to be paid to its players. The proforma for an acceptable legally binding Statement of Emoluments will be provided by the Chief Operating Officer on 1 July (or other such date as determined by the COO, acting reasonably) of the year in which the season commences.

This statement shall also include and identify players employed or proposed to be employed by related companies, organisations, sponsors etc. This shall include any and all payments to the player or any party related to the player, irrespective of whether a

player has a separate contract to participate in local, national, European or international competitions for the Club.

The Chief Operating Officer or an Independent Auditor may review the employment of such players, at their discretion in order to determine whether, in their opinion, the employment is bona fide and the remuneration for such employment is reasonable.

If the Chief Operating Officer or the Independent Auditor determines that related organisations are providing payment for non-bona fide employment, or excessive payment, they shall be empowered to increase the attributed total Emoluments paid by the Club at their discretion.

- 10.8 Each Club shall inform the Chief Operating Officer of any adjustments to the emoluments payable to players which arise after the Club has supplied a Statement of Emoluments.

It should be noted that where a club's total emoluments approach or cross a regulatory threshold (as defined in Rule 10.2) during the course of a season - whether through player additions, departures, or contract amendments - this may result in delays to player registration approvals while verification of the applicable threshold takes place. Clubs are advised to monitor projected emoluments closely and engage with the Chief Operating Officer in advance of any changes that may alter their regulatory status under Rule 10.2.

- 10.9 Each Club shall supply the Chief Operating Officer, if requested, with a certified Final Statement of Emoluments paid within two weeks of such a request being made.

- 10.10 Upon request, each Club shall immediately make available to the Chief Operating Officer or the Independent Auditor all documents and records they require.

- 10.11** Any Club which fails to submit requested information to the Chief Operating Officer or the Independent Auditor within two weeks of such a request being made will be subject to a fine.

- 10.12 A Club may request, in writing at any time during the period, a review by the Independent Auditor of the emoluments paid by any other Club. It shall be the sole decision of the Chief Operating Officer as to whether such a review should be undertaken.

- 10.13 All matters relating to the amounts submitted as part of the Team Payments Regulations shall be confidential.

## **CLUB GOVERNANCE**

### **11 GOVERNANCE AND PERFORMANCE OBJECTIVES**

- 11.1 Each Club will implement agreed Governance and Performance Objectives, as determined by the Board, and SLB will have the power and authority to:

- (a) impose sanctions and/or fines on Clubs; and/or
- (b) terminate the Franchise Agreements of those Clubs

that fail to fully implement such Governance and Performance Objectives.

- 11.2 Each Club will implement the Medical Benchmarks set out by the Chief Medical Officer each year.

## **CLUB GOVERNANCE**

### **12 CONDUCT AND COLLABORATION**

- 12.1 Clubs will cooperate with the release of British players for all Great Britain team games and training camps, whether these are international competitions, tests or friendly matches.
- 12.2 Clubs will include a minimum number of eligible Great Britain players within each match squad of 12 players.
- 12.3 Clubs and/or the Players will not:
- (a) do or omit to do anything, which might be prejudicial to the good image of the SLB, the BBF, FIBA or the sport of basketball; or
  - (b) make any defamatory or derogatory statement or take part in any activities, which are or might be derogatory to or are or might otherwise be, in SLB's reasonable opinion, detrimental to the reputation of SLB, the BBF or FIBA;
- 12.4 Clubs and the Players shall respect and comply with the terms, obligations and spirit of the FIBA General Statutes, Rules and Regulations.
- 12.5 All Clubs and Players will comply with the requirements of UK Anti-Doping's drug testing programme and the Anti-Doping regulations of UK Anti-Doping, the World Anti-Doping Agency and FIBA.
- 12.6 Clubs will be required to declare on their annual Compliance Statements that they have met SLB's Internal Anti-Doping requirements as set out in [Appendix I](#).
- 12.7 Any Club, Owner, Secretary, Promoter, Representative, player, coach, or team follower offering or receiving any reward or other inducement to or from another Club or person to win or lose a match, or being found guilty of placing a wager on any match, shall be deemed guilty of misconduct.
- 12.8 Any Club that deliberately fields a weakened team without what SLB considers to be good reason, or is deemed to have deliberately lost a match, shall be deemed to be guilty of misconduct. SLB may require a Club to provide a medical certificate in any case of doubt regarding illness or injury.
- 12.9 No Owner, Secretary, Promoter, Representative, player, coach or team follower shall directly or indirectly approach Match Officials, before, during or after a match, to give information or make comment which may be
- a) regarded as being intended to influence a Match Official's judgment or neutrality in any way.
  - b) regarded as being derogatory or abusive in relation to Match Officials.
- 12.10 No Owner, Secretary, Promoter, Representative, player, coach or team follower shall directly or indirectly comment to the press or media regarding any allegation of breach of discipline prior to and whilst the relevant disciplinary matter is under consideration.
- 12.11 All Clubs and Players will comply with Health and Safety requirements mandated by SLB from time to time.
- 12.12 All Clubs and Players will undertake training mandated by SLB from time to time.

- 12.13 All Clubs will provide access to all players (at no charge to players) to diagnostic testing, cardiac screening, MRIs and x-rays where reasonably needed and access to physio at every match and official training session.



## **CLUB GOVERNANCE**

### **13 PARTICIPATION IN NON SLB COMPETITIONS**

- 13.1 Any club wishing to play in any competition other than The Competitions must first apply for approval from SLB. This shall apply to any competition in the UK or overseas even if organised by another SLB Club, FIBA, ULEB, or ENBL.
- 13.2 All broadcast rights in any match under [Rule 13.1](#) shall be vested in SLB as per [Rule 29](#).

## **14 COMPETITIONS**

### **14 THE COMPETITIONS**

- 14.1 The Competitions comprise:
- (a) The SLB Championship
  - (b) The SLB Trophy
  - (c) The SLB Cup
  - (d) The SLB Championship Play-offs
- 14.2 All Clubs in SLB must take part in The Competitions.
- 14.3 Other Clubs not in SLB may take part in The Competitions only at the express invitation of the Board.
- 14.4 SLB reserves the right to charge Clubs a participation fee to take part in The Competitions.
- 14.5 Clubs in SLB eligible to take part in FIBA Competitions may do so only with permission of FIBA and SLB. Clubs eligible to take part in EuroLeague, ENBL or any other international competition may do so only with the permission of SLB.
- 14.6 The winner of the SLB Championship will be entitled to the first European place made available to the SLB by FIBA, Euroleague or ULEB. If this entitlement is declined then the entitlement will be passed onwards in the following order SLB Championship Runner Up, SLB Championship Playoff Winner, SLB Cup Winner, SLB Trophy Winner, SLB Championship 3<sup>rd</sup> Place, SLB Championship 4<sup>th</sup> Place.
- 14.7 It is mandatory for all Clubs and their players and officials to take part in any events or competitions as designated by SLB. Such events or competitions must be approved in advance by the Board and advised to Clubs a minimum of 28 days in advance of the events or competitions.

## **15 COMPETITIONS TROPHIES**

- 15.1 Trophies remain the property of SLB. When the winning Clubs have been ascertained, SLB will present the appropriate trophy to that Club, who will be responsible for its return to SLB within one month in good order and condition. SLB will normally keep the trophies at all other times.
- 15.2 If a Trophy is damaged whilst under the care or custody of a Club, the Club may be required to pay to SLB the amount of the present value of the trophy or the cost of thorough repair. If a trophy is lost or destroyed from any cause whilst under the care and custody of a Club, the Club may be required to pay to SLB a sum equivalent to the present value of the trophy, in addition to any other penalty that SLB may impose.
- 15.3 SLB shall present individual mementoes to the following:
- |                               |                                 |
|-------------------------------|---------------------------------|
| The SLB Championship          | 18 each to Winners.             |
| The SLB Trophy                | 18 each to Winners, Runners-up. |
| The SLB Cup                   | 18 each to Winners, Runners-up. |
| The SLB Championship Playoffs | 18 each to Winners, Runners-up. |

## **16 COMPETITIONS MATCH FACILITIES**

- 16.1 Each Club shall register its home court with SLB and no Club shall play a home match on any other court without the approval of SLB. If a Club wishes to change its permanent home court, it must make application to SLB for permission.
- 16.2** The Home Club is responsible for ensuring the playing floor is clear of any other markings than basketball court marking and advertising.
- 16.3** A scoreboard, and a clock, shall be provided that can be read by players, officials and spectators throughout the course of the game. The clock must at least show the passing of time in minutes. In the event of a game clock being of such construction that it is not possible for both teams to have an equally good view of it, this fact must be made known at the pre-game meeting.
- 16.4** For all matches in the Competitions a suitable device must be provided for the administration of the 24-seconds rule. This device must be of the digital countdown variety and capable of automatic reset to 14 seconds. Each club also must make sure that there is a backup system for scoreboard, game clock and 24-second shot clock.
- 16.5** The Home Club must arrange for the display of appropriate material relating to the Competitions (e.g. sponsor's name) and official sponsors of SLB as SLB may from time to time determine.
- 16.6** The Home Club is responsible for ensuring that first aid cover for the public is available at all matches in accordance with the Sports Grounds Safety Authority guidance. [Annex-E-Medical-room-checklist.pdf](#). Such provision will be confirmed by the Promoter.
- 16.7** The Home Club shall be responsible for providing the presence of a qualified sports therapist for both teams at each match.
- 16.8** The Home Club shall be responsible for ensuring that SLB approved pressure-release rings are used on backboards for each match and for ensuring that a replacement backboard and ring is available and capable of being rapidly erected if necessary.
- 16.9 No sponsor branding of rings is allowed under any circumstances.
- 16.10 The Promoter is responsible for ensuring that due account is taken of any Health & Safety implications with regard to the match facilities and will work with SLB to promptly implement any Health and Safety regulations mandated by SLB.
- 16.11 The Home Club must ensure that there are escape lanes for players on each side of each basket which remain unoccupied during the match.
- 16.12 The Promoter shall ensure that, in their judgement, there is sufficient free-standing area around the playing court to allow the match to progress in an acceptably safe manner.
- 16.13 It is the responsibility of the Home Club to provide a match programme for all SLB home matches.
- 16.14 Signage must be placed on the doors of all assigned changing rooms within the facility.
- 16.15 One individual floor wiper (person) must be positioned next to each basket at all times with a fibre mop to absorb wet spots when instructed to do so by a Referee

## **17 COMPETITIONS FIXTURES**

- 17.1 In the Championships, Clubs will play in a prescribed format as decided by the Board.
- 17.2 The Championship positions shall be determined by awarding two points for a win.
- 17.3 In the event of a tie between teams in the Championship at the end of the season, this shall be resolved as follows:
- (a) If there are two teams involved in this classification, the result(s) of the match between the two teams involved will be used to determine the placings.
  - (b) In the event that the total points scored and conceded are the same in the matches between the two teams, the classification will be determined by points difference taking into account the results of all the matches played in the league by both teams.
  - (c) If more than two teams are equal in the placings, a second classification will be established taking into account only the results of the matches between the teams that are tied.
  - (d) In the event that there are still teams tied after the second classification, then goal difference will be used to determine the placings, taking into account only the results of the matches between the teams still tied.
  - (e) If there are still teams tied, the placings will be determined using points difference from the results of all their matches played in the league.
  - (f) If there are still teams tied, the placings will be determined using points scored (team scoring most points being placed higher)
  - (g) If there are still teams tied, then lots will be drawn
  - (h) If at any stage using the above criteria, a multiple tie is reduced to a tie involving only two teams, the procedure in (a) and (b) will be applied.
  - (i) If it is reduced to a tie still involving more than two teams, the procedure beginning with (c) is repeated.
  - (j) Points difference will always be calculated by subtracting points against/conceded from points for/scored.
- 17.4 At the end of the regular season, Clubs shall proceed to the SLB Championship Play-Offs as set out in [Rule 17.15](#).
- 17.5 SLB may, in exceptional circumstances, declare a match to be void and award each team such points as it deems to be appropriate.
- 17.6 If a club fails to fulfil at least 90% of its scheduled Championship fixtures in a season, its record in the League shall be expunged in its entirety. Such failure shall be penalised by automatic forfeiture of its Franchise, together with such other action as SLB may deem to be appropriate.
- 17.7 SLB may at its sole discretion move the scheduled fixtures to alternative dates/times, if this is judged by the Chief Operating Officer to be in the interest of SLB or its members.
- 17.8 The SLB Cup and SLB Trophy competitions shall be arranged by SLB each season and the specific format of the competition will be as laid down by the Board. The resolving of equality of position in any preliminary pools shall be arrived at as in [Rules 17.2 – 17.6](#).
- 17.9 SLB shall prepare a fixture list prior to the start of the season, according to the dates supplied to SLB by clubs. The following criteria will be applied where multiple matches are to be scheduled for a particular club in a short period of time:
- i. A club will not be required to play two matches on consecutive days.

Such criteria apply to domestic fixtures only.

In exceptional circumstances, any Club may rearrange a fixture by agreement with the other Club affected and with the permission of SLB. A Club shall not arrange any match which interferes with the home fixtures of any other club. In exceptional circumstances, SLB may require a fixture to be rearranged. For clarity, provided multiple matches fall within the criteria set out in (a) to (b) above, this does not constitute a reason for the re-arrangement of a match.

In particular, where a Club is required to play a match in the SLB Cup Final or the SLB Trophy Final within 48 hours of a scheduled match in the Championship, the Club so affected has the right to have the match rearranged. Any other Club affected by such an arrangement shall not be entitled to seek compensation as a result of such rearrangement.

Application for rearrangement must be submitted within 48 hours of the relevant SLB Cup or SLB Trophy fixture becoming known to the Club seeking the rearrangement.

- 17.10 Where a fixture is displaced and needs to be re-scheduled, the home club shall propose a revised date. Provided that the away club is available on the date in question, and that the date is not in conflict with the criteria set out in [Rule 17.9](#) above, such date shall be considered acceptable.

Where a club considers it has a valid reason for a rearrangement, but cannot obtain the agreement of the opponent Club, it may apply to SLB for approval of the change and must notify the opponent Club of the application. The opponent Club shall have the right to submit information opposing the rearrangement. This information must be submitted to SLB within 7 days of the Club receiving notification of the application. The procedure under [Rule 17.13](#) shall apply.

- 17.11 The dislocation of any fixture from its specified date shall be immediately notified to SLB and the opposing Club by the Club concerned. It shall be the duty of the Home Club to notify the Match Officials.

In the event of any fixture not being played owing to circumstances over which neither Club has any control, or being ordered to be replayed, it shall be played on a date to be mutually agreed. Such date shall be notified to SLB by each Club within 14 days of the date of the postponement or order to replay. Failure to do so shall result in the application of [Rule 17.13](#).

- 17.12 Whenever two Clubs fail to reach agreement as to when a match in the SLB Championship, the SLB Cup or the SLB Trophy shall take place, SLB shall stipulate the date, time and venue for the match.
- 17.13 When a Club is responsible for the postponement of a match, whether or not it is with the consent of SLB, that Club may be liable to pay compensation to the other Club involved, subject to [Rule 17.10](#). The amount of compensation shall be agreed between the Clubs concerned and, in the absence of any such agreement, either Club may apply to the Board for arbitration.
- 17.14 Any Club which, without just cause, fails to fulfil a fixture in the SLB Championship, the SLB Cup or the SLB Trophy on the appointed date shall, for each offence, be liable to expulsion from the competition, if SLB so decides, and may also be liable to pay a fine and/or compensation to SLB and/or other Clubs affected by such failure.
- 17.15 The Championship Play-offs shall take place at the completion of the Championship and the specific format of the competition will be determined by the Board.

## **COMPETITIONS**

### **18 GUEST ADMITTANCE FOR HOME MATCHES**

- 18.1 Clubs are required to admit up to 25 guests of the visiting team.

The visiting team is required to request these via email at least 24 hours prior to the match and may either:

- (a) supply a list of names to the Home Team. The Home Club may request identification to present this ticket to the named individual.
- (b) request that 25 tickets are handed over to the visiting team's nominated official.

Should the visiting team fail to request their guest tickets within the required timescale, it will be at the discretion of the home team as to whether they allow entry of any guests of the visiting team.

- 18.2 Clubs are required to admit Officers of SLB and their guests. There is no maximum number of guests that an SLB Officer may have in attendance. The SLB Officer will, where practical, provide 24 hours advance notice of their attendance, along with the required number of guests.

- 18.3 Clubs are required to admit Directors of SLB and their guests. There is no maximum number of guests that an SLB Director may have in attendance. The SLB Director will, where practical, provide 24 hours advance notice of their attendance, along with the required number of guests.

- 18.4 Clubs are required to admit one guest ticket for each Match Official appointed to officiate the match.

- 18.5 Clubs are required to admit bona fide members of the press/media to their home matches in The Competitions, upon production of an SLB issued press /media pass.

- 18.6 Clubs are required to admit coaches of other SLB Clubs, upon production of their SLB Licence Card, for scouting purposes.

- 18.7 Clubs are required to admit SLB Referees that are not appointed to officiate the match subject to capacity (see Rule 18.8).

- 18.8** If the Home Club has no capacity, they should notify SLB and the Officiating Supervisors immediately.

- 18.9 Entry for other individuals is at the discretion of the home team.

## 19 COMPETITIONS UNIFORMS

**19.1** The uniform of all team members shall consist of:

- Shirts of the same dominant colour front and back as the shorts. If shirts have sleeves they must end above the elbow. Long sleeved shirts are not permitted. All players must tuck their shirts into their playing shorts. 'All-in-ones' are permitted.
- T-shirts, regardless of the style, are not permitted to be worn under the shirts.
- Shorts of the same dominant colour front and back as the shirts. The shorts must end above the knee.
- Socks of the same dominant colour for all team members. Socks need to be visible.

19.2 Each team member shall wear a shirt numbered on the front and back with plain numbers, of a colour contrasting with the colour of the shirt.  
The numbers shall be clearly visible and:

- Those on the back shall be at least 16 cm high.
- Those on the front shall be at least 8 cm high.
- The numbers shall be at least 2 cm wide.
- Teams may only use numbers 0 and 00 and from 1 to 99.
- Players on the same team shall not wear the same number.

Teams must have a minimum of 2 sets of shirts and shorts

- Each Club is required to register with SLB details of its home and its away colours.
- The home uniforms must be predominantly dark in colour and the away uniforms light in colour.
- The dominant colour in the home kit needs to be a different colour to the dominant colour in the away kit.
- The first team named in the schedule (home team) shall wear dark-coloured shirts.
- The second team named in the schedule (visiting team) shall wear light-coloured shirts.
- However, if the 2 teams agree, they may interchange the colours of the shirts.
- In the unlikely event of a colour clash, the visiting team shall change to colours that provide a suitable contrast to those worn by the home team.

**19.4** Uniform design and colours must be submitted to SLB for approval by 1st June prior to the season in question. Thereafter, any Club wishing to change its approved uniform design must submit the appropriate application to SLB, normally giving not less than 6 months' notice of any intended change. Only in special circumstances will a change of uniform be permitted to take effect during a playing season.

19.5 An SLB Logo must be placed on the front of the shirt, on the right breast/shoulder area. This should be a minimum of four (4) cm high.

19.6 The surname of the player must be placed on the back of the vest, above the playing numbers. The height of the writing must be of minimum six (6) cm and maximum ten (10) cm.

19.7 Player name and numbers must be clearly visible both in-person and when broadcast.

19.8 For matches played on neutral courts, SLB will decide which colours are to be worn by each team.



## **COMPETITIONS**

### **20 DURING THE EVENT**

- 20.1 The Home Club shall nominate a Promoter for each match. Referees may advise on court layout, but responsibility and accountability for match presentation remains with the Promoter.
- 20.2 Each Club shall nominate a Representative for each match to represent their interests at any time during the event. The Representative may not be a Match Official, but may be a member of the team.
- 20.3 The Match Officials, the Promoter and the Representatives, and at least five players of each team, are required to be present at the venue at least one hour prior to the scheduled starting time.
- 20.4 The Crew Chief shall conduct a pre-game meeting between the Match Officials, Promoter and Representatives one hour prior to the scheduled starting time.
- 20.5 The Home Club shall have the choice of baskets and team benches. Before each half and each extra period, a team shall have the exclusive right to practice in that half of the court into which it will be attacking in the forthcoming period.

On neutral courts, SLB will decide which team shall have which basket and team bench.

- 20.6** 40 minutes prior to the start of the match, the Competition Licence cards of all players, coaches and team followers who are to take part in the match shall be presented to the Table Officials for inspection.
- 20.7 In the event of a valid Competition Licence card not being produced for any person, it shall be at the discretion of the Club concerned as to whether that person participates in the match, bearing in mind that subsequent disciplinary action may ensue, including possible forfeiture of the match.
- 20.8 Prior to the start of the match, the visiting team shall be permitted a minimum of 15 minutes' actual warm-up time. Each team shall be responsible for providing its own practice balls. The Crew Chief shall ensure that the match ball is selected and approved at least 20 minutes prior to the scheduled starting time for the match.
- 20.9 If the visiting team arrives at the venue any later than 30 minutes prior to the scheduled start time, the match should be re-scheduled to tip off 30 minutes after the visiting team enter the home venue.

This timescale has been calculated to allow 15 minutes for changing and 15 minutes for warming up however it is at the discretion of the away team as to how they utilise this period of time. In these circumstances, it is acceptable for the visiting team to abstain from participating in the team introductions.

Following the match, the visiting team is required to provide a report to SLB detailing the reasons for their late arrival. Such a report to be duly considered by the Chief Operating Officer and, where necessary, further action may be taken against the visiting team as provided under the SLB Operating Rules.

- 20.10** Any action during the warm-up periods of a match (pre-game, half time, or during any interval of play) which is liable to damage equipment is strictly prohibited.
- 20.11** All matches shall be played with a Molten Size 7 BG4550 Match Ball.

20.12 The Crew Chief, in conjunction with the Promoter, the Referees and the Representatives, shall make decisions regarding all aspects of the match not covered by the rules of basketball.

20.13 It is the intention of SLB that any scheduled match should take place, and all parties should exhaust all possibilities to ensure that this is achieved.

In considering a situation those involved must take into account commercial as well as playing considerations. Due concern must be given to the needs of all parties to the match including spectators, sponsors and the media as well as teams. Where a problem is recognised be it during traveling to the match, prior to ordering the match it must be reported to the opposing club, the Referees and the SLB COO as soon as it is apparent.

It is the Home Club's responsibility to make contact with the SLB COO.

20.14 Where a problem is deemed to be potentially serious, the Crew Chief must ensure that the Representatives make a Club Director or Owner aware of the issue and that they, together with the Promoter and Representatives, are involved in any meeting/discussion held to consider the matter.

20.15 In considering all possibilities to ensure that a match takes place the parties may amend the designated times for starting the match and take any other action, within the rules of basketball, which is conducive to enabling the match to go ahead.

20.16 Where an Announcer carries out a form of commentary during the course of a match, they shall be required to refrain from supplying technical information other than objective statistics and shall refrain from statements of opinion regarding the quality of decisions made by the Match Officials. The Crew Chief may, if he considers it to be appropriate, instruct the Promoter that the commentary shall be modified or terminated forthwith. Match Commentators should be in possession of the Match Announcers Guidelines [\(See Appendix K\)](#).

20.17 The use of artificial sounding devices by supporters at matches should be discouraged and Match Officials are authorised to require the Promoter to prohibit the use of such devices where these are affecting the proper control of the match. A Home Club shall have the right to refuse access to spectators possessing such devices.

20.18 Musical instruments, for example electronic organs, are permitted to be used during matches, but must not be played when free throws are taking place.

20.19 A Home Club is responsible for taking all reasonable precautions to safeguard the Match Officials, the opposing team and its officials, and all other third parties against deleterious action by their players, officials and spectators during the match. A minimum of two officials of the Home Club, and more if the situation demands, shall be assigned to protect and escort the Match Officials to and from the court at all times.

**20.20** It is a requirement that all SLB matches are Live Statcasted using the FIBA Live Stats software. If there is a problem with Live Statcasting at a match then [Rule 20.21](#) will apply.

By 9.30am the day after the match the following should be emailed to the League:

- (a) the FIBA Live Stats game file
- (b) the Scoresheet (scanned in colour)

**20.21** The Promoter shall be responsible for notifying SLB of the following if the match is not Live Statcasted:

At the end of each quarter must ring to notify SLB of the end of quarter scoreline. Scores from other matches will be available and it is suggested these are passed on to the crowd via the match commentator.

Within 5 minutes of the end of the match telephone the result to SLB giving:

- (a) Score (Quarter, half, three quarter and full time)
- (b) Top three scorers for each team
- (c) Significant incidents in the match (particularly in final minutes)
- (d) Any other interesting information

**20.22** The Home Club shall provide accommodation for Referees before the match and during the half-time interval and basic refreshments before and during the match. The accommodation should be for Referees use only.

Basic refreshments for referees should, as a minimum, include:

- i. 1.5L water per referee
- ii. A selection of Fruit
- iii. Tea/Coffee
- iv. Biscuits, cookies, and/or protein bars

**20.23** Each player and coach that takes part in any match shall be required to be available for interview by the press, television and radio for 30 minutes after the end of the match as directed by SLB. No fees shall be payable in respect of any such interview. Any person who is not available for interview or refuses to be interviewed shall be subject to disciplinary action.

20.24 The Promoter shall ensure that any cheerleaders, dance troupes or mascots that are courtside to provide entertainment or club support during intervals in play to be more than one metre from the playing area at all times when they are not performing a specific routine on the playing court. In particular, if they are located in the close vicinity of the baskets, they should be located more than two metres from the basket supports so as not to interfere with the movement of the Referees and behind any advertising boards.

20.25 For all matches in the Competitions, home clubs must submit five rights free images from the match to SLB, one during the match and four immediately following the conclusion of the match

20.26 The Home Team shall make available eight Molten Match Balls to the away team for pre-game practice.

## **COMPETITIONS**

### **21 MATCH REGULATIONS**

- 21.1 Each match shall be played in accordance with the FIBA rules of play, but subject to the amendments detailed below.
- 21.2 The interval at half time shall be 15 minutes subject to the requirements of television.
- 21.3 Where the Club cannot meet the requirements of Articles 2 and/or 3 of the FIBA regulations, they must notify SLB.

## **COMPETITIONS**

### **22 SLB HOSTED EVENTS**

- 22.1 At tournaments and championships organised by SLB, a Technical Commission will be appointed by SLB to take responsibility for such decisions related to the event as may be deemed by the commission to be necessary.
- 22.2 At these events, the Technical Commission shall act as the Disciplinary Panel. They shall follow the procedures for protests ([Rule 32](#)) and discipline ([Rule 34](#)) with the exception that they shall operate to any timescale necessary in order to facilitate the smooth operation of the tournament.
- 22.3 At these events, the Technical Commission will decide the eligibility of a person to participate.
- 22.4 At matches promoted by SLB, the competing teams shall be entitled to receive such expenses as the Board shall from time to time determine.

## PLAYERS

### 23 NATIONAL STATUS AND PLAYER ELIGIBILITY

#### 23.1 Player Categories

- (a) 'National' - A person eligible to play for Great Britain in accordance with the regulations of FIBA OR A person that holds British Citizenship.
- (b) 'Right to Work' – A person who does not hold a Certificate of Sponsorship from the club but has the right to work in the UK as a Professional Sports person.
- (c) 'Non-national' - A person who does not qualify under (a) or (b) above.

23.2 From the 1st January 2025, each club will register with SLB a minimum of six National players each season.

23.3 In the Competitions, a club shall register on the scoresheet:

- (a) a maximum of six non-national players.
- (b) any number of 'National' or 'Right to Work' players

23.4 From the start of the 2024/25 season, each Club may hold, at any one time, a maximum of 6 Competition Licences for non-national players all of whom can require a Certificate of Sponsorship to work in the UK.

23.5 In cases of doubt regarding national status a person shall be required to declare and produce any current full passports or other documentary evidence as the SLB may require.

23.6 Any person who applies for, or is issued, with a Competition Licence shall provide to SLB the following documentation (or equivalents) as applicable:

- a current full passport,
- Certificate of Sponsorship,
- Visa

They will also provide any other documentary evidence as may be required by the SLB, in order to establish that person's national status.

23.7 Where a person has been licensed for a season, they shall be permitted to apply to alter his status during the course of that season where his nationality has been changed. The SLB may, alter the status of a person, either more or less favourably, by virtue of further information becoming available which was not apparent at the time the application to license the player was received.

23.8 During the course of a season, any Club may license a maximum of 12 non-national players, subject always to [Rule 23.3](#).

For the avoidance of any doubt, any non-national player who is delicensed and subsequently relicensed by a club will count as a new licence for the purposes of this calculation.

Where a Competition Licence is cancelled by virtue of the application of [Rule 23.3](#), the player concerned shall be a free agent, unless he currently holds a contract of the standard form (see [Rule 24.3](#)) which has been deposited with and approved by SLB and continues to be honored by the Club.

## **PLAYERS**

### **24 CONTRACT AND TRANSFER SYSTEM**

- 24.1 A person shall be free to represent the Club of his choice in the Competitions, subject to the Rules contained herein.
- 24.2 Prior to application for a Competitions License to play or coach for a Club in the Competitions, a contract must be filed by the Club with SLB for approval by the Chief Operating Officer. No Competition License shall be issued until such approval has been given.
- 24.3 In exceptional circumstances, the Chief Operating Officer of SLB may allow a player to be licensed for a Club, even though he has not signed a contract of a standard form as issued and approved by SLB ("Standard Contract"). Such a player shall be considered to be a "non-contract" player. Nevertheless, for the duration of the season in question, the player is governed by the transfer regulations as set out herein.
- 24.4 After expiry of any Competition Licence:
- (a) A non-contract player shall become a free agent and may subsequently be licensed or contracted by any Club. Any Club for which the player was formerly licensed shall have no entitlement to request any compensation for the player's services.
  - (b) A player who has been subject to an Approved Contract, as issued and approved by SLB, which expires prior to the start of a forthcoming season, shall become a free agent and may subsequently be licensed or contracted by any Club. Any Club for which the player was formerly licensed shall have no entitlement to request any compensation for the player's services.
  - (c) A player who is subject to an Approved Contract which extends into the coming season shall, except by agreement of his Club, only be licensed for that Club in the forthcoming season.
- 24.5 A free agent may, subject to FIBA regulations, sign an application for a Competitions License at any time, and for any Club, except during the period 1 April to 31 May each year, or as otherwise restricted by other Rules, and any Club for which he was formerly licensed shall have no entitlement to request any compensation.
- 24.6 Subject to the requirements embodied in any contract that is valid at that time, a Club may at any time release a non-contract player and shall notify the player of such release and shall surrender his Competition Licence to SLB, whereupon the player shall immediately become a free agent.
- 24.7 A player with an Approved Contract shall be entitled to apply for a Competition Licence to coach without compensation. Any subsequent request by the player or his new Club for a Competition Licence for the coach to play will be subject to the terms embodied in the Standard Contract for the period of time stipulated by the Approved Contract.
- 24.8 The terms and conditions contained in the Approved Contract shall govern the transfer of any player to whom such a contract applies and shall take precedence over any conflicting terms in these Rules.
- 24.9 In order to establish the existence of an Approved Contract, a Club shall, as soon as possible after signature, forward to SLB the signed Certificate of Contract relating to the Approved Contract.
- 24.10** Where players are transferring between Clubs, the new contract must be lodged with SLB within seven days of signature by both parties.

- 24.11 Where a player and his Club, (or related companies, organisations or sponsors of the Club) have agreed more than one contract to cover the same period of time, both contracts must be lodged with the Chief Operating Officer of SLB.
- 24.12 A team follower may, at any time, demand his release. The Club for which he is licensed must immediately comply, unless it is of the opinion that the team follower owes money to the Club, in which case the Club shall forward the Competitions License to the SLB to be held until such time as the SLB is satisfied that such money has been paid.
- 24.13 A transfer of a Competition Licence from one Club to another during the course of a season shall not normally be permitted, unless the player, the transferee Club and the transferor Club have all consented to such transfer and the terms of such a transfer.
- 24.14 If a licensed player wishes to seek a transfer of his license during the course of a season, they shall submit this request to the Club concerned asking to be made available for transfer. For players who have not signed any contract with the transferor club, the Club must comply with this request by informing the SLB. The player is advised to send a copy of the request to SLB for verification purposes.

If the transferor Club and the transferee club cannot agree terms for such a transfer, either Club shall have the right to invoke arbitration.

- 24.15 Whenever agreement is reached relating to the transfer of a Competition Licence, a transfer form shall be completed and signed by the licensed person and the Secretary or otherwise authorised representative of the transferee Club and transferor Club. The form should contain all details of the conditions agreed by the parties and which are being submitted to the SLB for its consideration. This form shall then be forwarded to the headquarters of the SLB, together with the new Competition Licence application, any current Competition Licence card and the appropriate fees.

The person becomes eligible to represent his new Club only when the documents are received and approved by the SLB, it is the responsibility of the transferee Club and transferor Club to ascertain that the transfer has been successfully completed.

- 24.16 If any transfer fee is payable in respect of the transfer of a Competition Licence, such fee shall be deemed exclusive of Value Added Tax, unless specifically stated otherwise, and the Value Added Tax at the current rate shall be payable in addition to the fee stipulated if the transferor Club is registered for Value Added Tax.
- 24.17 A transfer form signed in accordance with [Rule 24.16](#) shall constitute an absolute certification that the transferor Club is satisfied that the fee and any Value Added Tax thereon has been or will be paid to them by the transferee Club and a transfer shall not subsequently be annulled by virtue of breach of contract by the transferee Club.
- 24.19 Not more than four transfers shall be permitted between the same transferor and transferee Club in any one year ended 31 May and a transfer shall not be approved if it includes an automatic return clause. A transfer may include a provision related to payment by a transferor Club if the licensed person rejoins the transferor Club at a later date.
- 24.20 Whilst a person holds a Competition Licence, no person representing any other Club shall approach the player with a view to inducing him to leave that Club, unless permission has been granted in writing by a duly authorised representative of the Club to which the person is currently licensed. Any infringement of this rule shall be treated by the SLB as misconduct.



- 24.21 [Rule 24](#) shall apply to a person who is licensed solely as a coach, except in so far as they relate to the Approved Contract and, therefore, at the end of a season, a coach shall have the status of a free agent. [Rule 24](#) shall apply to a person who is licensed as both a player and a coach as if the person is a player only.
- 24.22 Any transfer of a Competition Licence shall be arranged directly between the transferor Club, transferee Club and the individual concerned and not through or by an agent.
- 24.23 If SLB determines that a Club is in breach of the terms and conditions of an Approved Contract so as to merit the termination thereof forthwith, the player shall thereafter be deemed to be a non-contract player under these Rules.
- 24.24 The playing season shall be considered to extend from the first date on which The Competitions involving a Club take place until the last date on which The Competitions involving that Club take place.

## **25 PLAYERS LICENSING**

- 25.1 All players, coaches (which for the purposes of this rule shall include assistant coaches) and team followers in the Competitions are required to have a National Competition Licence Card as issued by the SLB, which includes a current passport photograph. This Competition Licence permits the person to represent the Club in all relevant competitions.
- 25.2 To be valid, a Competition Licence must be signed by the player for the season in question and with the Club clearly specified.
- 25.3 A player shall not be eligible to play for a Club in the SLB Trophy Final or SLB Cup Final unless he has held a valid Competition Licence card for that Club for 14 days prior to the date of the Final.
- 25.5 Players may be licensed at any time prior to midday on the last day of March. Thereafter, Competition Licence applications can only be considered in respect of coaches and team followers and in such cases only bona fide applications will be approved.
- 25.6 To be eligible for consideration, an application for a player's Competition Licence, accompanied by any specified documents and fees, must be received by the SLB the prior to the deadlines set out above. It is acknowledged that paperwork from third parties (ie Certificate of Sponsorship or International Clearance) may arrive post the deadlines set out above, however all other paperwork and fees must be received prior to the deadlines. The player will only be licensed once all paperwork is received.

## **OFFICIALS**

### **26 MATCH OFFICIALS**

- 26.1 Referees shall be appointed for each match by the Officiating Supervisors.
- 26.2 Table Officials and Statisticians shall be appointed for each match by the Home Club.
- 26.3 The Match Officials shall receive fees in accordance with the rates in [Appendix D](#).
- 26.4 The fees in [Appendix D](#) will be determined before 31<sup>st</sup> July of the new season.
- 26.5 Match Officials shall wear such clothing as is laid down by SLB.
- 26.6 If a Match Official fails to arrive at the appointed venue 30 minutes before the scheduled starting time of the match, and, if no communication has been received by the Home Club as to the reason for the failure, the Crew Chief in conjunction with the other Match Officials shall take all possible steps to obtain a substitute Match Official, in order that the match can take place.
- 26.7 If all Match Officials fail to arrive, the Promoter shall contact the Officiating Supervisor who shall take all possible steps to obtain substitute Match Officials, in order that the match can take place.
- 26.8 If the Crew Chief has been informed that one or all of the Match Officials are expected to arrive late but before the scheduled tip-off time, they shall decide in conjunction with other Match Officials and the Visiting Club, after taking into account all the circumstances, whether they may be allowed to officiate.
- 26.9 If a Match Official is substituted, the substitution shall stand even if the designated Match Official subsequently arrives and the same Match Officials shall continue throughout the match.
- 26.10 If a Match Official is injured or becomes ill during the course of a match, the Crew Chief in conjunction with the other Match Officials may appoint a suitable substitute.
- 26.11 Any Match Official offering or receiving any reward or other inducement to or from another Club or person to win or lose a match, or being found guilty of placing a wager on any match, shall be deemed guilty of misconduct.
- 26.12 Match Officials shall not make any recommendations or comment, either in their written report or otherwise, as to any disciplinary action that they consider to be appropriate.

## **OFFICIALS**

### **27 ROLE OF OFFICIATING SUPERVISORS**

- 27.1 The Officiating Supervisors act as independent advisers to SLB on all matters pertaining to the Match Officials and the rules of the game.
- 27.2 The Officiating Supervisors will advise SLB on all matters related to the development of Match Officials and work with the BBF to ensure training programmes for Match Officials are targeted towards SLB's aspirations.
- 27.3 The Officiating Supervisors will review reports on the handling of the matches in The Competitions by the Match Officials and advise SLB (and the BBF) of the implications for future development.

## **MEDIA AND BROADCAST**

### **28 MEDIA**

- 28.1 All Clubs must attend one of two centralized pre-season media days organized by SLB to capture content. SLB will notify Clubs of the date in advance, with transport costs incurred by Clubs financially compensated by SLB. Clubs will also be able to utilize the two media days for their own content captures and SLB will make all assets captured available to all Clubs.
- 28.2 Upon confirmation of the two finalists for the Trophy and Playoffs, SLB will require Clubs to make available a suitable area within their home venue to host a media day; this is to include space for three media stations and one interview area where light and sound can be controlled. Clubs must make all players available for these media days. SLB will provide four weeks advance notice to said Clubs, and all assets captured will be made available to both Clubs.
- 28.3 All Clubs are required to provide SLB with a minimum of 72 hours' advanced notice of all player signings. In circumstances where a player is signed within 72 hours of a game, then the Clubs are to notify SLB of the signing within 48 hours of tip-off, providing all information is supplied to SLB. SLB will not distribute any player information until any embargo on a signing has been lifted and will be treated under the strictest confidentiality.
- 28.4 All Clubs are required to provide SLB with a minimum of 72 hours' advanced notice on any public announcements relating to, but not limited to: a) Movements of Club's players b) Coaches and Leadership teams c) Business and investment d) Community efforts Clubs must keep SLB updated with announcements via weekly updates and any announcement dates should be discussed with SLB in advance. All Clubs (or their associated PR agencies) must use the 'Club Announcement' template. SLB will provide a centralized announcement calendar, updated weekly, to reduce potential clashes, and SLB will provide announcement approvals within 24 hours, Monday to Friday
- 28.5 All Clubs must accommodate any external media requests. SLB will provide as much advanced notice as possible.
- 28.6 All Clubs must provide a designated mixed zone at their home venues where media can gather to facilitate post-match interviews with Players and Coaches. SLB will provide Clubs with an interview step-and-repeat, which should be used for all interviews in the mixed zone.
- 28.7 SLB will operate a centralized media accreditation system to manage all media accreditation requests. SLB and Club must approve any media attending any game in The Competitions. All media need to be registered for accreditation a minimum of 48 hours prior to tip-off. In case where a media request falls within the 48 hours timeframe, they must be approved by SLB and Club ahead of tip-off and entered into the accreditation system upon arrival at the venue.
- 28.8 SLB will provide designated coloured Bibs that any courtside media must always wear when courtside.
- 28.10 A Media Relations representative of a Club must be present for each game in The Competitions. The name of the representative must be supplied to SLB a minimum of seven days prior to gameday. This representative may also have additional roles but must ensure full management of all media, including accommodating any requirements the media may have, assisting with broadcast interviews with players and coaches, and ensuring accredited media are adhering to SLB's Media Code of Conduct.

- 28.11 All Clubs must provide all media with accessible Wi-Fi, power outlets, water, and refreshments at all games in The Competitions.
- 28.12 Content from any external content creators, not associated with SLB or any Club, must be approved by the Clubs and SLB before being published on any League, Club, or other channel.
- 28.13 SLB will ensure the designated Floor Manager will be available to answer any questions the media have and will provide suitable information to the Club's Media Relations representative and/or Press Officers ahead of the game's tip-off.

## **MEDIA AND BROADCAST**

### **29 BROADCAST AND RELATED RIGHTS**

- 29.1 All Broadcast Rights to any match in which any club appears (a "Match") are vested in, and shall be the exclusive property of, SLB. Broadcast Rights shall mean all and any rights to broadcast or otherwise transmit or exploit audio or audio-visual coverage anywhere in the world of any Match by any means including, without limitation, television (whether terrestrial, satellite, cable, digital or otherwise), radio, NVOD, VOD, Internet broadband and any other broadband delivery system including DSL, 3G and any other form of mobile telephony and/or any other computer generated source or any other forms of electronic media now existing or at any time hereafter developed including, but not limited to, so-called film rights, video rights, non-theatrical rights (e.g video-wall exhibition, in-flight showings), CD-ROM CD-I, NVOD, VOD and DVD.
- 29.2 (a) Save as otherwise stated in these Regulations, Clubs shall not be entitled to enter into any agreement relating to the exploitation or use of the Broadcast Rights.
- (b) Without prejudice to the generality of [Rule 29.2](#) and [Rule 29.3\(a\)](#) above and subject to any arrangements that SLB may have with broadcasters and/or other commercial partners SLB may cede any or all of the Broadcast Rights to any Club in relation to any Match at its sole discretion but a Club may not enter into any agreement relating to the exploitation or use of Broadcasting Rights so ceded without the express consent in writing of SLB, and in a form approved by SLB. **Such consent will not be unreasonably withheld by SLB.** For the avoidance of doubt it is hereby confirmed by SLB that until further notice SLB has ceded so-called local radio rights (being the right to permit coverage by the home Club's local radio station) to the Clubs provided that no such agreement will grant or restrict SLB or any licensed broadcaster or other commercial partner of SLB from granting national or other radio or audio only rights or any other Broadcast Rights to any other party.
- (c) With the exception of any sub-licence, sub-contract and/or assignation of any Broadcast Rights granted by licensed broadcasters or commercial partners of SLB to third parties, SLB shall be a party to any agreement in regard to the exploitation or use of Broadcast Rights unless otherwise agreed in writing.
- 29.3 Each club shall procure that, save in accordance with [Rule 29.5](#) below that:
- (a) no entry or access is permitted to a venue where a Match is staged (the "Venue") at any time to any equipment personnel for the purposes of producing, filming, broadcasting, or otherwise recording or transmitting coverage of such Match or any related activity in any media; and
- (b) no use is made of any equipment existing or otherwise present at the Venue for any of the purposes referred to in [Rule 29.4\(a\)](#) above.
- 29.4** A Club may only allow entrance or access to a Venue to equipment or personnel, or permission to use equipment existing or otherwise present at any venue for any of the purposes referred to in [Rule 29.4\(a\)](#) above, after having obtained the consent of SLB in writing and subject to the party to be granted such entrance, access or permission entering into an agreement with SLB and/or the Club.
- 29.5 The Clubs shall cooperate fully with SLB's appointed production companies/broadcasters and/or their appointed production companies, as notified to Clubs by SLB, in particular but without limitation the Clubs shall procure:

- (a) free of charge access to the Venue for the equipment and personnel necessary for producing audio, visual and/or audio-visual coverage of a Match.
- (b) free of charge parking for all vehicles.
- (c) free of charge access to all facilities existing at the Venue such as without limitation electricity, interview rooms, commentary position, camera position, gantries, studios.
- (d) Nominated players make themselves available for interview immediately after conclusion of a Match.

29.6 Team line-ups are to be provided to the League, under embargo, if necessary, a minimum of 90 minutes prior to tip-off.

29.7 Team line-ups are to be announced externally a minimum of 60 minutes prior to tip-off.

29.8 All Clubs must make one player (MVP) and one coach available immediately after the final buzzer for broadcast interviews on-court, referred to as the 'Super Flash' interview. Broadcast Super Flash interviews must be completed to time. The Club Media Relations representative must escort the player and coach to the Super Flash interview location on-court immediately following the final buzzer.



## **BROADCAST, ADVERTISING, AND SPONSORSHIP**

### **30 BRANDING/ADVERTISING AT HOME VENUES**

- 30.1 Any Club at whose home venue a match takes place shall procure a Clean Arena (whether contractually with the venue owner or otherwise) for the period of hire ("the clean period"), save for the following advertising or branding:
- (a) SLB and/or SLB sponsors' advertising and branding in accordance with SLB instructions to the Club.
  - (b) The Club and/or Club sponsors' own advertising or branding, subject to restrictions imposed by SLB.
- 30.2 If the venue owner or other third party already has existing agreements in place with advertisers or other third parties, the Club shall ensure that any branding or advertising resulting from such agreement shall be covered up throughout the clean period.
- 30.3 There may not be any advertising or branding under [Rule 30.1\(b\)](#) for any brands which are competitive to those of SLB sponsors without SLB approval.
- 30.4 Notwithstanding [Rule 30.1](#) above, in certain cases SLB may grant, at its sole discretion and in agreement with the Club, some fixed and/or permanent advertising or branding opportunities to the venue owner or other third parties.

These advertising or branding opportunities shall not apply to any advertising space on the floor area, backboards, courtside or perimeter boards, scoreboards, chairs or seating area adjacent to the floor area. The adjacent seating area for this purpose shall include all that area within camera shot. SLB shall determine, at its sole discretion, whether an area is within camera shot.

Any concession made by SLB pursuant to this [Rule 30](#) shall be communicated in writing.

## **BROADCAST, ADVERTISING, AND SPONSORSHIP**

### **31 SPONSORSHIP**

**31.1** All Clubs will abide by the terms of any Sponsorship Agreement entered into by SLB.

31.2 Molten are sponsors of the official match ball to be used in SLB Competitions. All Clubs must:

- (a) display a Molten courtside board in prime camera location.
- (b) display two Molten branded Ball Trolleys at centre court during all warm-up sessions, at the start of the game and start of the second half.
- (c) use Molten Balls in all aspect of their business.

Under the terms of the contract each club receives match balls for use in training and for all matches. Please note clubs are not required to use a new match ball for each match.

31.4 Each Home Club will make 5 Courtside Boards available to SLB for all matches. For Televised matches, the Home Club will also make 3 Courtside Boards available to the away team ([See Appendix L](#)).

31.5 Clubs are required to collect customer data wherever possible and with the necessary permissions to share the data with SLB (for use in SLB marketing initiatives)

31.6 SLB can negotiate additional corporate sponsors for SLB and The Competitions as it sees fit. SLB will advise Clubs of any commitments that may exist from such sponsorship a minimum of three months in advance of the timescale for the commitments.

**31.7** Each Club will carry SLB sponsor logos on the home page of their website.

## **DISCIPLINE AND APPEALS**

### **32 PROTESTS**

- 32.1 A Club may file a protest if its interests have been adversely affected by:
- (a) an error in scorekeeping, timekeeping or shot clock operations, which was not corrected by the officials.
  - (b) a decision to forfeit, cancel, postpone, not resume or not play the game.
  - (c) a violation of the applicable eligibility rules.
- 32.2 In order to be admissible, a protest shall comply with the following procedure:
- (a) The captain (CAP) of that team shall, no later than 15 minutes following the end of the game, inform the Crew Chief that his team is protesting against the result of the game and sign the scoresheet in the 'Captain's signature in the case of protest' column.
  - (b) The team shall submit the protest reasons to the Crew Chief in writing (email is permissible) no later than 1 hour following the end of the game.
  - (c) A fee of £500 shall be applied to each protest and shall be paid in the event that the protest is rejected.
- 32.3 Following receipt of the protest reasons, the Crew Chief shall complete a written report of the incident that led to the protest and submit this to SLB no later than 2 hours following the end of the game.
- 32.4 SLB shall provide the protest reasons and the Crew Chief's written report to the Disciplinary Panel no later than 3 hours following the end of the game. SLB shall also provide the Disciplinary Panel with the footage of the game.
- 32.5 The Disciplinary Panel shall issue any procedural requests to clarify the information provided at [Rule 32.4](#) which it deems appropriate and shall decide on the protest as soon as possible, and in any event no later than 24 hours following the end of the game.
- 32.6 The Disciplinary Panel shall use any reliable evidence and can take any appropriate decision, including without limitation partial or full replay of the game.
- 32.7 The Disciplinary Panel may not decide to change the result of the game unless there is clear and conclusive evidence that, had it not been for the error that gave rise to the protest, the new result would have certainly materialised.
- 32.8 The decision of the Disciplinary Panel in relation to [Rule 32](#) is considered as a field of play rule decision and is not subject to further review or appeal.

## **DISCIPLINE AND APPEALS**

### **33 DISCIPLINE**

- 33.1 SLB has responsibility for all disciplinary matters in its Competitions.
- 33.2 The SLB Chief Operating Officer will appoint members to a Disciplinary Panel in respect of each season by the 31 August of the proceeding season. When a panel is convened, it will normally be made up of three members one or more persons of which will have expertise on legal matters or sports judiciary matters.
- 33.3 The Disciplinary Panel is entitled to administrative assistance from SLB, support in relation to the interpretation of the Official Basketball Rules and to the benefit of legal counsel.
- 33.4 All violations of the SLB Operating Rules (see [Rule 33.2](#)) will be considered by the Disciplinary Panel, who will arrange proceedings and hearings in accordance with [Rule 33](#).
- 33.5 Any person may provide information to SLB relating to a possible disciplinary offence.
- 33.6 In order for an incident to be considered by the Disciplinary Panel details of the alleged incident should be sent, in writing (ordinary mail, email), to SLB within:
- (a) 48 hours following the end of the Match in which the alleged incident took place.
  - (b) where the alleged incident happened outside of a Match there is no formal deadline, however, SLB encourages allegations to be made as swiftly as possible.
- 33.7 SLB will notify the Disciplinary Panel within 24 hours following receipt of the allegation and provide all details of the alleged incident. Where relevant, SLB shall also provide the Disciplinary Panel with the footage of the match.
- 33.8 The Disciplinary Panel will notify the Club Administrator of the Club to which the complaint relates, in writing, of the allegation immediately upon receipt of the allegation.
- 33.9 The Disciplinary Panel shall issue any procedural requests that it deems appropriate; the initial request for information shall be no later than 48 hours following receipt of the allegation.
- 33.10 Facts related to alleged incidents may be established by any reliable evidence, including without limitation admissions, official reports and records, witness testimonies, party testimonies, on-site inspections, expert opinions, television and video recordings, personal confessions, and other records and documents.
- 33.11 Facts contained in reports of SLB Officials are presumed to be accurate. Any party may prove their inaccuracy on a balance of probabilities, in which case the burden of proof shall revert to SLB.
- 33.12** Where a Player, Club, Owner, Promoter or Representative is asked to provide information in response to an alleged incident they must comply with such request within the timescales stipulated by the Disciplinary Panel.
- 33.13 The Disciplinary Panel shall evaluate the evidence, taking into consideration the specific considerations under which the events occurred, the previous conduct of the person(s) concerned and generally all the circumstances in order to determine whether they believe that the disciplinary offence in question occurred and whether and to what extent a disciplinary measure is required. The Disciplinary Panel shall adopt a standard

of proof and shall make findings of fact based upon the balance of probabilities.

- 33.14 If audio-visual evidence indicates that additional players/officials/Clubs should be considered for disciplinary action, other than had been identified in the initial allegations, this will be actioned only after the additional players/officials/Clubs are so advised and a copy of the relevant audio-visual evidence provided.
- 33.15 Any Club, Owner, Club Secretary, Promoter, Representative, player, coach or team follower may be fined and/or suspended for any matter as determined by the Disciplinary Panel.
- 33.16 The Disciplinary Panel may also take such action against a Club (e.g. fine) as it deems appropriate regarding any aspect of the match promotion, security etc., including action in respect of the outcome of a match (e.g. order replay, deduct league points, declare void, etc.).
- 33.17 Except for administrative offences or disqualifications where automatic action has been invoked, a sanction may not be imposed before the person concerned has had the opportunity to be heard and to present his case. The Disciplinary Panel is free to decide whether the right to be heard may be exercised solely in writing (ordinary mail, email) or also orally. It may authorise the use of telephone or video conference.
- 33.18 Proceedings and hearings before the Disciplinary Panel shall be free of charge.
- 33.19 All persons who are the subject of proceedings may be assisted by a legal representative of their choice. However, unless allowed by the Disciplinary Panel as a witness or expert, no person other than the accused person may participate in disciplinary proceedings.
- 33.20 Any Player, Club, Owner, Promoter or Representative is obliged to comply with a summons to appear as a witness. The Disciplinary Panel may take due account or even draw adverse inference (the latter only if mentioned together with the summons) from any refusal to appear at a hearing and/or provide evidence on the part of a party, a party's representative or a witness.
- 33.21 Any unsolicited approach or communication made by or on behalf of a club or individual, other than in writing as permitted by the rules or regulations, to the Disciplinary Panel related to any matter which the Disciplinary Panel is considering is deemed to be misconduct, and appropriate disciplinary action may ensue.
- 33.22 The Disciplinary Panel can take any appropriate decision, including without limitation partial or full replay of the match.
- 33.23 The Disciplinary Panel will issue a decision which shall include a summary of its findings. The decision will provide sufficient information or a reference to the provisions applicable to the appeal process, if any. Decisions on administrative offences may be delivered without reasons. There is no deadline for the Disciplinary Panel to issue its decision and it can do so whenever it is appropriate.
- 33.24 Decisions issued in accordance with this Rule will be published on the SLB official website.
- 33.25 Members of the Disciplinary Panel and Officers of SLB are not liable for any actions or failures to act in connection with disciplinary proceedings, except for cases of gross negligence or unlawful intent.
- 33.26 Parties shall be responsible for and bear the expenses of their representatives, experts, witness, legal counsel, etc.

33.27 If a player, coach or team follower is disqualified or expelled from a match, disciplinary action shall automatically be invoked, unless FIBA Article 36.2.5 applies. In this case, the procedures and timelines set out in 33.6 to 33.9 shall not apply.

## **DISCIPLINE AND APPEALS**

### **34 APPEALS**

- 34.1 All parties in the sport have the right of appeal.
- 34.2 The appeals panel of SLB will include a representative from SLB (who is independent of the Clubs) unless the decision appealed to the appeals panel concerns SLB.
- 34.3 Challenges against decisions of Match Officials made during or at the conclusion of games are not subject to appeals.
- 34.5 Any decision made by the SLB appeals panel may be submitted exclusively by way of appeal to the Court of Arbitration for Sport in Lausanne, Switzerland, which will resolve the dispute definitively in accordance with the Code of sports-related arbitration. The time limit for appeal is twenty-one days after the reception of the decision concerning the appeal."

## **35 COPYRIGHT**

- 35.1 The copyright to these Rules is that of SLB. Reproduction, adoption, or adaption of these Rules either in part or in whole, without the express permission of SLB is strictly forbidden.



## **APPENDIX A**

### **REGISTER OF INTERESTS AND RELATED PARTIES**

A1. A Register of Interests and Related Parties will be maintained by the Company Secretary in respect of the following categories:

- (a) SLB Directors
- (b) Influential Persons
- (c) Officers of SLB
- (d) External Parties invited to attend Board Meetings
- (e) Committee Members

Notwithstanding this Appendix A, any conflicts of interest will be dealt with in accordance with any Shareholders' Agreement and SLB's articles of association.

#### Interests

A2. Any individual that falls into one of the above categories must avoid a situation in which they have, or can have, a direct or indirect interest that conflicts, or possibly may conflict, with the interests of the company.

A3. Any individual falling into one of these categories must disclose any potential interest upon being made aware of it.

A4. When considering whether to declare an interest, the individual must consider the following:

- (a) Remember that they must act in the interests of SLB at all times.
- (b) Be open regarding any conflicts of interest they may have.
- (c) Adopt practical solutions where conflicts of interest exist or may exist.
- (d) Plan ahead and agree on how they will manage any conflicts of interest which arise.

#### Related Parties

A5. SLB requires the disclosure of any directorships, or trusteeships held by an Influential Person, their spouse, or close family members.

A6. This information should be submitted annually with the Compliance Statement but any change in circumstance should also be notified to the Company Secretary within 14 days.

A7. The Company Secretary will provide the Register of Interests and Related Parties to the Chairperson in advance of any meeting of the Board. All interests should be updated prior to each meeting commencing. Each individual must declare that their interests as recorded in the register of interests are correct and this declaration will be recorded in the minutes of the meeting.

A8. If a Board member thinks they may be conflicted they should raise this ahead of the relevant discussion or decision and the Chairperson should consult with the other Directors present before taking a decision.

A9. If a Board member feels that a party has an undisclosed conflict of interest they should advise the Company Secretary prior to the meeting. The Chairperson should consult with the other Directors present before taking a decision.

A10. The identified conflict of interest and action taken will be recorded in the minutes of the meeting.

#### Additional Disclosures

A11. In addition to the obligation to notify SLB of any Interests and/or Related Parties in this Rule C, Clubs must notify SLB of any potential transaction involving SLB in which a connected party, affiliate, subsidiary or associate of the Club (whether current or former) has a beneficial interest.

## **APPENDIX B**

### **FIT AND PROPER REQUIREMENTS**

#### B1. SLB Directors:

1. Each Director will be required to complete a Fit and Proper Declaration prior to their appointment to the SLB Board of Directors being approved.

#### B2. Influential Persons – Clubs:

2. Each Club will be required to complete a Fit and Proper Declaration for any individual that is deemed to be an Influential Person.
3. Save where any exemption has been granted, any individual who is subject to a Disqualifying Condition may not be or become an Influential Person of a Club.

#### B3. Influential Person Definition:

4. An Influential Person means any individual person operating the powers that are usually associated with the powers of a director of a company incorporated under the Companies Act including but not limited to:
  - (a) a person registered as a director or secretary of the Club at the Registrar of Companies;
  - (b) a person exercising direct or indirect control over a corporate director of the Club;
  - (c) a person who has been elected to become a director of the Club at a meeting of the board of directors of the Club or the members of the Club;
  - (d) a shadow director as defined in Section 251 of the Companies Act 2006;
  - (e) a person in accordance with whose directions or instructions the persons constituting the management of the Club are accustomed to act;
  - (f) any 'chief executive officer', 'general manager', 'chief operating officer' or any other person undertaking any duties which would objectively be considered to be equivalent to those roles;
  - (g) a person who exercises or is able to exercise direct or indirect control over the affairs of the Club. For these purposes of this definition a person shall be regarded as being able to exercise direct or indirect control over the affairs of the Club in particular but without limiting the generality of the preceding word if that person owns or is entitled to acquire 25% or more of the share capital of the Club or the voting power in the Club.
5. There shall be excluded from the definition of Influential Person any legal or professional advisors acting in their legal or professional capacity without any interest (in excess of a 5% shareholding) in the Club.

#### B4. Fit and Proper Declaration

1. The Fit and Proper Declaration will require confirmation that the person is not subject to any of the following "Disqualifying Conditions":
  - (a) Is not subject to a disqualification order as a director of a UK registered company under the Directors Disqualification Act 1986 (as amended) or the terms of an undertaking given to the Secretary of State under that Act or any like sanction pursuant to similar provisions in any other jurisdiction;
  - (b) Has not been convicted of any Relevant Offence or where they have this conviction is now considered spent under the Rehabilitation of Offenders Act 1974 and they are not a Registered Offender;

- (c) Has not been banned or suspended by SLB or any Sport Governing Body from involvement in the administration of that sport and they have not been issued with a period of ineligibility by UK Anti-Doping (or any other Anti-Doping Organisation) as a result of being found to have committed an Anti-Doping Violation;
  - (d) Is not subject to any form of disqualification or striking off by a professional body including the Law Society, Bar Council or the Institute of Chartered Accountants of England and Wales or equivalent bodies in any jurisdiction;
  - (e) Is not associated in any capacity with an SLB or WSLB Club if they are to be appointed as an Independent Director;
  - (f) Has not been an Influential Person of a sports club that has entered into an Insolvency Event whilst they have been an Influential Person of that Club (or within the 12 months immediately following their ceasing to be an Influential Person of that Club) in the 10 years preceding the date of the completion of the Declaration;
  - (g) Is not and have not, in the last five years, been subject to:
    - i. an Individual Voluntary Agreement (in accordance with the provisions of Part VIII of the Insolvency Act);
    - ii. a Bankruptcy Order,
    - iii. an Interim Bankruptcy Restriction Order or a Bankruptcy Restriction Order (under the provisions of Schedule 4A of the Insolvency Act 1986);
    - iv. a debt relief order (in accordance with Part 7A of the Insolvency Act);
    - v. an administration order (in accordance with Part 6 of the County Courts 1984);
    - vi. an enforcement restriction order (in accordance with Part 6A of the County Courts Act 1984);
    - vii. a debt management scheme or debt repayment plan (in accordance with Chapter 4 of the Part 5 of the Tribunals, Courts and Enforcement Act 2007);
    - viii. any arrangement or order in any other jurisdiction that has a substantially similar effect.
2. The Fit and Proper Declaration will require proof of identity and residential address.
  3. SLB may request additional information to be submitted in the Fit and Proper Declaration.

## B5. EXEMPTIONS

1. Any person who is subject to a Disqualifying Condition has the right to ask for an exemption from the prohibition on becoming/remaining an Influential Person at a Club. Any application for an exemption shall set out the grounds for such application. The Board has absolute discretion in granting any such exemption (and shall take into account such factors as it considers appropriate) and may make it subject to such terms and conditions as it considers appropriate. In determining whether to grant such an exemption, and the terms for any such exemption, the Board shall consider the Fit and Proper Purpose.

## B6. BREACH

1. Any Club that
  - (a) fails to inform SLB of the identity of any individual who qualifies as an Influential Person of that Club; or
  - (b) has, as an Influential Person, any individual who is not entitled to be an Influential Person (Unless SLB has granted an exemption).

shall be guilty of misconduct and the incident will be referred to the Disciplinary Panel.

2. Any Club or Influential Person that negligently, recklessly or with intent provides to SLB a Declaration or other information that proves to be false shall be guilty of misconduct and will be referred to the Disciplinary Panel.

## **APPENDIX C**

### **COMPLIANCE STATEMENTS**

C1. Each Club agrees to complete an annual Compliance Statement which contains:

- (a) Confirmation of the Directors of the Club, and their adherence to Fit and Proper requirements.
- (b) Confirmation of the Owners of the Club, and their adherence to Fit and Proper Requirements.
- (c) Confirmation of the Club Administrator, and agreement that they understand their responsibility for disseminating information through the Club.
- (d) Confirmation that the Club adheres to all data protection regulations currently in force.
- (e) Confirmation that the Financial, Legal, and administrative affairs of the Club are up to date.
- (f) Details of the individual(s) that have completed the UK Anti-Doping "Introduction to Clean Sport" course.
- (g) Confirmation that each member of their coaching team has completed the UK Anti-Doping "Coach Clean" module.

## APPENDIX D

### EXPENSES AND FEES OF OFFICIALS

D1. The fees payable to Match Officials shall be as follows:

ROLE	MATCH FEE	PAYMENT	PAID BY
Referee	Match Fee (Regular season)	£160	SLB
	Match Fee (QF)	£170	
	Match Fee (SF)	£180	
	Match Fee (Final)	£200	
Table Officials and Statisticians	Match Fee (Regular season)	£50	Club
	Match Fee (QF)	£55	
	Match Fee (SF)	£60	
	Match Fee (Final)	£85	

D2. The expenses payable to Referees shall be as follows:

Travel	Rail	The actual fare paid up to a maximum of second-class ordinary return	
Travel	Own car	40 pence per mile	
Travel	Company car	20 pence per mile	
Overnight accommodation	Bed and breakfast	The cost of overnight accommodation	Approval for essential overnight accommodation must be obtained from SLB in advance
Overnight accommodation	Private host	£50 per night	No receipt required
Subsistence	Food only	£25 per night	Overnight stay or when an official is necessarily absent from home in excess of 10 hours
		£10 per night	When an official is necessarily absent from home in excess of 8 hours

D3. Any additional travel agreed by SLB will be paid by SLB.

D4. For the purpose of expense claims, a double-header appointment is treated as a single match.

D5. Payment shall be withheld until receipts are provided to support claims.

D6. Referee expense claims are to be submitted to SLB monthly, no later than the last day of each month and incorporating only games worked up until the date of submission. Payment will be paid by BACS, no later than the 7th day of the following month.

D7. All officials' fees and expenses paid by clubs are to be paid within 3 working days from the later of the claim being submitted or the date of the game.

D8. In any disputes over the payment of fees and expenses, the following standard

principles will apply:

- (a) A Match Official who travels to an event, having been legitimately appointed, shall receive travelling expenses in accordance with [Rule D2.](#)
- (b) The match fee for officiating should only be paid when the Match Official actually officiated in the match in question.

D9. If a Match Official arrives at a match at such a time as to be unable to officiate the whole match the following will apply:

- (a) If travelling difficulties or similar problems have arisen, the total amount payable to all Match Officials shall be calculated on the basis of the fees and expenses that would have been paid if no difficulties had arisen and the intended appointment had been fulfilled in the normal way. The Officiating Supervisor shall then determine the actual payment to be made to each of the officials involved, so that the equitable levels are paid to the person involved.
- (b) SLB may, in special circumstances, decide to overrule the decision of the Officiating Supervisor and order further payment or repayment, as it deems appropriate.



## **APPENDIX E**

### **DISCIPLINARY PANEL PENALTY PROCEDURES**

- E1. SLB operates a system of cumulative "penalty points", and a one match suspension comes into force whenever a person's total penalty points reach (or exceeds) each of the following totals: 10, 20, 25, 30, 35, 40 etc.
- E2. Penalty Points incurred shall come into force 7 days from the notification being sent during which time an appeal may be made.
- E3. At the end of each season (i.e. the end of season Championships), any remaining points will be passed back to the Disciplinary Panel for action.
- E4. Whenever a fine is imposed on an individual, they shall be suspended until the fine has been paid in full.
- E5. A person under suspension for a match may not play in the match, act as a team coach (or assistant team coach), sit on the team bench as a team follower or communicate with the team after 20 minutes prior to the starting time of the match until after the end of the match. He may be present in the arena as a spectator unless otherwise instructed by SLB.
- E6. A suspension as a result of an action in the Competitions shall only apply in the Competitions.
- E7. Any fine referred to in these Operating Rules shall be payable to SLB.
- E8. Player and Coach Disciplinary Outcomes will be published on the SLB Website.
- E9. In all cases should an appeal be lodged against a decision of the Disciplinary Panel any disciplinary action will be suspended until such time as the appeal is heard.

## APPENDIX F

### AUTOMATIC PENALTIES

F1. The following fines shall automatically be imposed by SLB:

<b>RULE</b>	<b>OFFENCE</b>	<b>FINE</b>	<b>NOTES</b>
1.3	Failure to respond to rule change	£250	Further consideration by SLB for repeat infractions
5.2	Failure to attend a Shareholder meeting	£500	
6-13	Failure to comply with Club Governance requirement	£1,000	Further consideration by SLB
7.2	Failure to submit amended Articles of Association within 7 days of approval	£500	
7.7	Failure to notify SLB of a new Club Administrator within 2 days.	£500	
8.1	Failure to submit long term business plans	£5,000	
8.2	Failure to submit financial statements within 6 months of the year end	£1,000	
8.4	Failure to hold adequate insurance cover	£5,000	
8.5	Failure to submit Compliance Statements in line with timescales	£3,000	
10.11	Failure to provide Team Payment Regulation information	£1,000	Further consideration by SLB
16.2	Failure to ensure clear playing floor	£500	
16.3	Failure to provide a scoreboard and/or a clock	£1,000	
16.4	Failure to provide a 24-second shot clock with automatic reset	£1,000	
16.5	Failure to display sponsor material	£2,500	Further consideration by SLB
16.6	Failure to provide first aid cover	£500	
16.7	Failure to provide qualified sports therapist	£500	
16.8	Failure to supply replacement backboard and ring	£1,000	
16.13	Failure to provide a match programme	£250	
18.8	Failing to notify SLB and the Officiating Supervisor that a venue is expected to be at capacity	£500	
19	Wearing a garment under playing vest	£100 per player	
19	Failure to tuck vest into shorts	£100 per player	
19	Wearing non-matching uniforms	£100 per player	
20	Arriving on the playing court after tip off time – up to 15 minutes after the originally scheduled starting time	£100	Exceptional circumstances will be considered
20	Arriving on the playing court after tip off time – up to 30 minutes after the originally scheduled starting time	£250	Exceptional circumstances will be considered
20	Arriving on the playing court after tip off time – in excess of 30 minutes after the originally	£500	Exceptional circumstances will

	scheduled starting time		be considered
20.6	Failure to provide licence cards to the Table Officials 40 minutes before the match	£500	
20.10	Action during interval of play warm-up liable to damage equipment	£250	
20.11	Failure to play with a Molten ball	£2,000	
20.20	Failure to send FIBA Live stats game file or the scoresheet by 9.30am the day after the match	£500	
20.21	Failure to telephone result/match information	£500	
20.22	Failure to provide accommodation and basic refreshments to the Match Officials	£250	
20.23	Failure to be available for interview	£1,000	
23	Fielding an ineligible player	£1,000	Further consideration by SLB
24.10	Failure to submit a Player Contract within 7 days of signature	£1,000	
29.4	Failure to obtain SLB's consent for access to the Venue for the filming of game footage (per match).	£500	
31.1	Failure to comply with SLB Sponsorship agreement	£5,000	Further consideration by SLB
31.7	Failure to carry the sponsor lock-up on the website	£500	
33.14	Failure to comply with Disciplinary Panel timescales	£500	
K	Derogatory and/or abusive comments towards Match officials made online or other media	£500	Further consideration by SLB

## APPENDIX G

### SLB CODE OF CONDUCT

- G1. SLB fully supports the aims and intentions of the FIBA Code of Conduct which it adopts in full and which can be found at: <https://www.fiba.basketball/internal-regulations/book1/general-provisions.pdf>
- G2. In addition, this SLB Code of Conduct applies to the following who must each be accountable for their own actions:
- (a) SLB and its Officers
  - (b) The SLB Board
  - (c) Clubs and Influential People
  - (d) Match Officials
- G3. For the purpose of this Code of Conduct, those listed in [Rule G2](#) are referred to as “the Basketball Parties”.
- G4. The Basketball Parties shall observe the following articles
- G5. The Basketball Parties shall comply with the following “Golden Rules”.
- (a) Play Fair: Winning is without value if victory has been achieved unfairly or dishonestly. Cheating is easy but brings no pleasure. Playing fair requires courage and character. It is also more satisfying. Fair play always has its rewards, even when the game is lost. Playing fair earns respect, while cheating only brings shame. Remember: it is only a game. And games are pointless unless played fairly.
  - (b) Play to Win but Accept Defeat with Dignity: Winning is the object of playing any game. Never set out to lose. If you do not play to win, you are cheating your opponents, deceiving those who are watching, and also fooling yourself. Never give up against stronger opponents but never relent against weaker ones. It is an insult to any opponent to play at less than full strength. Play to win, until the final whistle. But remember nobody wins all the time. You win some, you lose some. Learn to lose graciously. Do not seek excuses for defeat. Genuine reasons will always be self-evident. Congratulate the winners with good grace. Do not blame the referee or anyone else. Be determined to do better next time. Good losers earn more respect than bad winners
  - (c) Respect Opponents, Team-Mates, Referees, Game Officials and Spectators: Fair Play means respect. Respect is part of our game. Without opponents there can be no game. Referees are there to maintain discipline and Fair Play. Always accept their decisions without arguing, and help them to enable all participants to have a more enjoyable game.
  - (d) Embrace equality: Everyone has the same rights, including the right to be respected. Treat all members of the basketball family in line with the principle of equality. Teammates are colleagues. Build a team in which all members are equal.
  - (e) Promote the Interests of Basketball: Basketball is one of the world’s greatest games, but it always needs everybody’s help to maintain its greatness. Think of basketball’s interest before your own. Think how your actions may affect the image of the game. Talk about the positive things in the game. Encourage other people to watch and play fairly. Help others to have as much fun from basketball as you do. Be an ambassador for the game. Spectators give the game atmosphere. They want to see the game played fairly, but must also behave fairly and with respect themselves.
  - (f) Honour Those who Defend Basketball’s Good Reputation: The good name of basketball has survived because the vast majority of people who love the game

are honest and fair. Sometimes somebody does something exceptional that deserves our special recognition. They shall be honoured and their fine example publicised. This encourages others to act in the same way. Help to promote basketball's image by publicising its good deeds.

- (g) Reject Corruption, Drugs, Racism, Violence, Gambling and Other Dangers to our Sport: Basketball's huge popularity sometimes makes it vulnerable to negative outside interests. Watch out for attempts to tempt you into cheating or using drugs. Drugs have no place in basketball, in any other sport or in society as a whole. Say "no" to drugs. Treat all players and everyone else equally, regardless of their religion, race, sex or national origin. Show zero tolerance for gambling on games in which you participate. It negatively affects your ability to perform and creates the appearance of a conflict of interests. Show that basketball does not want violence, even from your own fans. Basketball is sport, and sport is peace.
- (h) Help Others to Resist Corrupting Pressures: You may hear that teammates or other people you know are being tempted to cheat in some way or otherwise engage in behaviour deemed unacceptable. They need your help. Do not hesitate to stand by them. Give them the strength to resist. Remind them of their commitment to their teammates and to the game itself. Form a block of solidarity, like a solid defence on the court.
- (i) Denounce Those who Attempt to Discredit our Sport: Do not be ashamed to stand up to anybody who you are sure is trying to make others cheat or engage in other unacceptable behaviour. It is better to expose them and have them removed before they can do any damage. It is equally dishonest to go along with a dishonest act. Do not just say "no". Denounce those misguided persons who are trying to spoil our sport before they can persuade somebody else to say "yes".
- (j) Use Basketball to Make a Better World: Basketball has an incredible power, which can be used to make this world a better place in which everyone can live. Use this powerful platform to promote peace, equality, health and education for everyone. Make the game better, take it to the world, and you will be fostering a better world.

G6. The Basketball Parties shall respect and promote the rights of Vulnerable Groups

G7. Basketball Parties shall familiarise themselves and comply with their safeguarding obligations, which include the following:

- (a) Ensure the safety of any Vulnerable Groups in their care
- (b) Always act in the best interests of vulnerable groups
- (c) Maintain appropriate and professional boundaries at all times
- (d) Treat all persons, especially Vulnerable Groups, equally with respect, dignity and fairness
- (e) Ensure that the same professional standards are applied regardless of ethnic origin, colour, nationality, race, religion, gender, sexual orientation, age or disability
- (f) Recognise the development needs of minors and the capacity of Vulnerable Groups
- (g) Promote an environment that is safe and enjoyable
- (h) Ensure that any concerns or allegations concerning the welfare of Vulnerable Groups are acted upon and recorded in accordance with this policy
- (i) Empower and educate Vulnerable Groups on their rights

G8. All forms of harassment, vilification, and abuse by Basketball Parties, be it physical, professional or sexual, and inflicting, facilitating or tolerating any non-accidental physical or mental injuries are strictly prohibited. In particular, without limitation, Basketball Parties shall not engage in the following:

- (a) Bullying. Bullying (or cyberbullying if conducted online) may include without

- limitation unwanted, repeated and intentional, aggressive behaviour usually among peers, and can involve a real or perceived power imbalance. Bullying may also include actions such as making threats, spreading rumours or falsehoods, attacking someone physically or verbally and deliberately excluding someone
- (b) Hazing. Hazing may include without limitation organized, usually team-based, form of bullying in sport, involving degrading and hazardous initiation of new team members by veteran team members
  - (c) Homophobia. Homophobia may include without limitation antipathy, contempt, prejudice, aversion or hatred towards lesbian, gay, transgender, bisexual individuals or other individuals who identify with a non-binary gender
  - (d) Neglect. Neglect means the failure of a coach or another person with a duty of care towards a player or other person to provide a minimum level of care, which causes harm, allows harm to be caused, or creates an imminent danger of harm
  - (e) Negligence. Negligence means an act or acts of omission regarding the safety of any player or other person for which the Basketball Party has a duty of care, which may include without limitation:
    - i. depriving a player of food/drink
    - ii. depriving a player of sufficient rest and recovery
    - iii. failure to provide a safe physical training environment
    - iv. developmental age-inappropriate or physique-inappropriate training methods
  - (f) Physical abuse. Physical abuse means non-accidental violence towards a player or other person, which may include, non-accidental trauma or physical injury caused by punching, beating, kicking, biting, burning or otherwise harming an athlete. This could include forced or mandated inappropriate physical activity (e.g. age-inappropriate or physique-inappropriate training loads, when injured or in pain), forced alcohol consumption, or systematic doping practices.
  - (g) Psychological abuse. Psychological abuse means any treatment that may diminish the sense of identity, dignity or self-worth, and may include without limitation any unwelcome act such as confinement, isolation, verbal assault, humiliation or infantilization.
  - (h) Sexual abuse. Sexual abuse means conduct of a sexual nature, whether non-contact, contact or penetrative, where consent is coerced/manipulated or is not or cannot be given
  - (i) Sexual harassment. Sexual harassment means unwanted and unwelcome conduct of a sexual nature, whether verbal, non-verbal or physical.

## APPENDIX H

### CODE OF ETHICS

- H1. SLB fully supports the aims and intentions of the FIBA Code of Ethics which it adopts in full and which can be found at: <https://www.fiba.basketball/internal-regulations/book1/general-provisions.pdf>
- H2. In addition, this SLB Code of Ethics applies to the following who must each be accountable for their own actions:
- (e) SLB and its Officers
  - (f) The SLB Board
  - (g) Clubs and Influential People
  - (h) Match Officials
- H3. For the purpose of this Code of Ethics, those listed in [Rule H2](#) are referred to as “the Basketball Parties”.
- H4. The Basketball Parties shall observe the following articles.
- (a) Demonstrate loyalty to SLB and its principles, and to the sport of basketball and not do anything that would bring discredit to the sport.
  - (b) Embrace honesty, integrity, and respectability as being core to all basketball activities and never knowingly provide false information to others.
  - (c) Not engage in any criminal or otherwise improper activities, either within or outside basketball.
  - (d) Observe the SLB Operating Rules and decisions of SLB.
  - (e) Honour all contracts (both personal and business) related to basketball and not encourage others to break such contracts.
  - (f) Refrain from activities which might affect the outcome of basketball games such as:
    - i. Acceptance of gifts/payments, commissions, or other considerations by players (other than as a legitimate part of playing contract);
    - ii. Acceptance of gifts/payments, commissions, or other considerations by officials (other than as a legitimate part of their contract of engagement);
    - iii. Offering gifts/payments, commissions, or other considerations to players and officials other than as part of their legitimate contractual payments;
    - iv. Betting or otherwise speculating either alone or through others;
    - v. Doping or the encouragement of doping;
    - vi. Engaging in criminal or other activities;
    - vii. Engaging in other unethical conduct of any kind which has the potential to affect the outcome of game/s.
  - (g) Ensure that discrimination, harassment, vilification, and/or abuse are not tolerated at any level and that there are appropriate policies and processes in place to deal with such behaviour.
  - (h) Administer basketball organisations in a transparent and fair manner, free from bias and corruption and through open and democratic elections and processes:
    - i. With day-to-day management according to democratic and accountability principles, including professional managers being responsible and accountable to their Board/Executive Committee/Management Committee and they, in turn, being responsible and accountable to their members/stakeholders.
    - ii. Avoiding actual or perceived conflicts of interest where administrators or other officials have, or appear to have, private or personal interests that detract from their ability to carry out their obligations in an official capacity with integrity in an independent and purposeful manner (private or personal interests include gaining any possible advantage for himself, his family, relatives, friends and acquaintances, and any organisation to which he

belongs and/or has a leading role). In the implementation of this provision, a conflict of interest policy has been implemented;

- iii. Ensuring openness and transparency in all dealings of administration and operation;
- iv. Ensuring decisions are based, as far as is possible, on objective rather than subjective criteria;
- v. Respecting commercial obligations and commercial-in-confidence transactions and intellectual property rights;
- vi. Ensuring scrupulous avoidance of deception, unethical practice, or any other behaviour that is, or might be construed as, dishonourable or detrimental to the sport of basketball;
- vii. Acting in accordance with the fiduciary duties of an office bearer, complying with the spirit and letter of the Ia, and recognising both the moral and legal duties of the role;
- viii. Not doing anything that in any way denigrates the sport of basketball or harms its public image at any level;
- ix. Managing relationships and transactions with sponsors, commercial partners, vendors, suppliers, and consultants in an ethical manner in accordance with this Code;
- x. Entering into contracts or other arrangements with organisations whose business is related to speculation on the outcomes or otherwise of sporting events only to the extent that such activity is not in breach of this Code of Ethics;
- xi. Ensuring full, fair, accurate, and timely disclosure in reports to SLB or to any other superior authority within the sport as may be required and also to relevant official authorities in the country or state of formation in full accordance with the law;
- xii. Ensuring that the personal rights of individuals are protected, respected, and safeguarded;
- xiii. Ensuring the privacy of individuals (apart from what is essential information for the organisation to function);
- xiv. Promoting the health and welfare of players;
- xv. Providing due process in disciplinary matters;
- xvi. Representing basketball honestly, worthily, respectably, and with integrity.

- (i) In the pursuit of open and democratic election processes, candidates offering themselves for election to office (i.e. to the Board or a Committee) should observe the following principles:
  - i. A candidate has the right to promote his candidature, subject to respecting any special provisions relating to that office and to this Code of Ethics;
  - ii. The promotion of a candidate is conducted with dignity and moderation;
  - iii. Excessive expenditure is avoided in order to preserve equality between candidates;
  - iv. No meeting or gathering of any kind is held in the framework or promoting a candidature;
  - v. Candidates may in no instance and under no pretext give presents or offer donations or gifts, or offer to grant advantages of whatever nature;
  - vi. No candidate may enter into any promise or undertaking to be performed, whatever the timing of such performance, for the direct benefit or indirect benefit of another basketball party;
  - vii. As voting in elections should be secret, no basketball party, individually or collectively, will announce in any form whatsoever their invitation to vote or produce any invitation to vote for a particular candidate;
  - viii. Each candidate shall, in the framework of promoting his candidature, respect the other basketball party candidates;
  - ix. A candidate may produce no spoken word, written text or representation of any matter likely to harm the image of another candidate or cause him prejudice;



- x. No understanding, coalition, or collusion between candidates with the intent to influence the result of the vote is allowed.
- (j) The Basketball Parties shall guarantee the player conditions of safety, well-being, and medical care appropriate for basketball.
- (k) The Basketball Parties, or their representatives, shall not directly or indirectly solicit, accept or offer any form of remuneration or commission, nor any concealed benefit or service of any nature, connected with the organisation of a Competition of SLB.
- (l) Only gifts of nominal value, in accordance with prevailing local customs, may be given or accepted by the Basketball Parties, as a mark of respect or friendship. Any other gift must be declared and passed on to SLB.
- (m) Hospitality shown to members and staff of the Basketball Parties, and to the persons accompanying them shall be declared and shall not exceed the standards prevailing in the host country.
- (n) The Basketball Parties, their agents, and/or their representatives must not be involved with firms or persons whose activity or reputation is inconsistent with other principles set out in this Code of Ethics.
- (o) The Basketball Parties shall neither give nor accept instructions to vote or intervene in a given manner within the operations of the SLB.
- (p) Where SLB gives financial support to Basketball Parties, financial records and accountability must be in accordance with the requirements stipulated by SLB.
- (q) The Basketball Parties shall endeavour to protect the environment on the occasion of any Match or Competition of SLB which they organise.
- (r) The Basketball Parties shall not disclose information entrusted to them in confidence.
- (s) All Basketball Parties commit to reviewing this Code of Ethics on an annual basis, and, where SLB stipulates, will complete CPD education in respect of this Code.

# **APPENDIX I**

## **INTERNAL ANTI-DOPING REQUIREMENTS**

### **I1. SLB POSITION**

1. All athletes have the right to compete in sport knowing that they, and their competitors, are clean. The use of performance-enhancing drugs and other doping behaviour severely damages the legitimacy of sport and undermines the integrity of clean athletes.
2. SLB condemns, and is totally opposed to, the use of performance enhancing drugs and doping practices in the sport of basketball and fully supports the position of the International Olympic Committee, the World Anti-Doping Agency (WADA), UK Anti-Doping (UKAD), FIBA, and the BBF against the use of banned substances and methods.
3. This means ALL players competing in the SLB/WSLB Competitions may be subjected to Drug Testing by UKAD at any time during the season. Their Anti-Doping procedures can be found <http://www.ukad.org.uk/>

### **I2. SLB RESPONSIBILITIES**

1. SLB will work with the BBF to ensure that appropriate education and support is provided to Clubs to enable them to meet the requirements of WADA, UKAD, and FIBA.
  - (a) No later than 31 August of the preceding season, SLB will set out the education and support plan in respect to Anti-Doping for the forthcoming season.
  - (b) Clubs commit to attending all education events stipulated as mandatory by SLB.

### **I3. CLUB RESPONSIBILITIES**

1. Everyone involved within basketball; players, coaches, administrators or team mates have a duty to ensure that each player is aware of their own responsibility and accountability.
  - (a) All Clubs shall designate an appropriate individual within their organisation to complete the UK Anti-Doping "Introduction to Clean Sport" Course; details of which to be submitted with the Compliance Statement.
  - (b) All Clubs shall ensure that every member of their Coaching team completes the UK Anti-Doping "Coach Clean" Module; details of which to be submitted with the Compliance Statement.
  - (c) All Clubs shall ensure that Players are reminded in writing of their specific responsibilities under FIBA Internal Regulation 4, Article 22 on a regular basis.

### **I4. PLAYER RESPONSIBILITIES**

1. Each player is personally responsible for any prohibited substance found in their system – regardless of how it got there.
2. ALL players should:
  - (a) Check the status of any substance before using it
  - (b) Stay up to date with the latest WADA Prohibited List of Substances and Methods.
  - (c) Inform all medical personnel that you must abide by anti – doping rules and that any medical treatment you receive must not violate these rules.
3. All players can check the status of branded medications or ingredients using the [Global Drug Reference Online](#).

4. A Therapeutic Use Exemption is a means by which a player can obtain approval to use a prescribed prohibited substance or method for the treatment of a legitimate medical condition.
5. Any player should advise all medical personnel of their obligation to abide by the UK Anti-Doping rules and that any medical treatment received must not violate these rules.
6. When prescribed a substance or method, athletes should find out whether the medication is prohibited by checking the Global DRO. If the medication is not prohibited, athletes can start using the prescribed medication or treatment.

## **APPENDIX J**

### **BETTING AND CORRUPTION**

- J1. SLB condemns, and is totally opposed to, any form of corruption within sport including bribery and criminal behaviour. SLB fully supports the position of FIBA.
- J2. The Betting and Corruption rules set out in this appendix applies to the following who must each be accountable for their own actions:
- (a) SLB and its Officers
  - (b) The SLB Board
  - (c) Clubs and Influential People
  - (d) Match Officials
- J3. For the purpose of this Betting and Corruption appendix, those listed in [Rule J2](#) are referred to as “the Basketball Parties”.
- J4. The following conduct set out at [Rule J5 to J9](#) is unacceptable:
- J5. Betting
- 1. Direct or indirect involvement of a Basketball Party in any form of Betting related to a Match in a SLB Competition including Betting with or through another person or entity on the result, progress, outcome conduct or any other such aspect of such a Match.
- J6. Manipulation of Results
- 1. Fixing or contriving in any way or otherwise improperly influencing, or being a party to fix or contrive in any way or otherwise improperly influence, the result, progress, outcome, conduct or any other aspect of a Match.
  - 2. Ensuring or seeking to ensure the occurrence of a particular incident in a Match which occurrence is to the Basketball Party's knowledge the subject of a Bet and for which he or another person or entity expects to receive or has received a Benefit.
  - 3. Failing in return for a Benefit (or the legitimate expectation of a Benefit, irrespective of whether such Benefit is in fact given or received) to perform to the best of one's abilities in a Match.
- J7. Corrupt Conduct
- 1. Accepting, offering, agreeing to accept or offer, a bribe or other Benefit (or the legitimate expectation of a Benefit, irrespective of whether such Benefit is in fact given or received) to fix or contrive in any way or otherwise to influence improperly the result, progress, outcome, conduct or any other aspect of a Match.
  - 2. Providing, offering, giving, requesting or receiving any gift or Benefit (or the legitimate expectation of a Benefit, irrespective of whether such Benefit is in fact given or received) in circumstances that the Basketball Party might reasonably have expected could bring him or the sport into disrepute.
- J8. Misuse of Inside Information
- 1. Using Inside Information for Betting purposes or otherwise in relation to Betting.
  - 2. Disclosing Inside Information to any person or entity with or without Benefit where the Basketball Party might reasonably be expected to know that its disclosure in such circumstances could be used in relation to Betting.
- J9. Other Violations

1. Inducing, instructing, facilitating or encouraging a Basketball Party to commit a violation set out in this Policy.
2. Any attempt by a Basketball Party, or any agreement by a Basketball Party with any other person or entity, to engage in conduct that would culminate in the commission of any violation of this appendix shall be treated as if a violation had been committed, whether or not such attempt or agreement in fact resulted in such violation. However, there shall be no violation under this Appendix where the Basketball Party renounces his attempt or agreement prior to it being discovered by a third party not involved in the attempt or agreement.
3. Knowingly assisting, covering up or otherwise being complicit in any acts or omissions of the type described in this appendix committed by a Basketball Party.
4. Failing to disclose to SLB without undue delay full details of
  - (a) Any approaches or invitations received by the Basketball Party to engage in conduct or incidents that would amount to a violation as set out in this appendix;
  - (b) Any incident, fact, or matter that comes to the attention of the Basketball Party that may evidence a violation under this Appendix by a third party, including, without limitation, approaches or invitations that have been received by any other party to engage in conduct that would amount to a violation of this Appendix.
5. Failing to cooperate with any reasonable investigation carried out with by SLB or FIBA in relation to a possible breach of this Appendix, including failing to provide any information and/or documentation requested by SLB or FIBA that may be relevant to the investigation.

J10. The following are not relevant to the determination of a violation of this Appendix:

1. Whether or not the Basketball Party was participating, or a Basketball Party assisted by another Basketball Party was participating, in the specific Match.
2. The nature or outcome of any Bet in issue.
3. The outcome of the Match on which the Bet was made
4. Whether or not the Basketball Party's efforts or performance (if any) in any Match in issue were (or could expected to be) affected by the acts or omissions in question;
5. Whether or not the results in the Match in issue were (or could expected to be) affected by the acts or omissions in question.

## **APPENDIX K**

### **ZERO TOLERANCE CODE OF CONDUCT: RESPECT FOR MATCH OFFICIALS**

This Code of Conduct sets out our commitment to ensuring a safe, respectful, and supportive environment for all match officials. Abuse, harassment, intimidation, or derogatory comments directed at match officials will not be tolerated under any circumstances.

This Code applies to:

- All players, coaches, team staff, club officials, and volunteers
- Spectators and supporters
- Committee members, board members, and any other person representing the organisation in an official capacity

It applies before, during, and after all fixtures, including in-person conduct and any form of online or social media activity.

#### **Standards of Behaviour**

All individuals must:

- Treat match officials with respect, courtesy, and professionalism at all times.
- Accept all decisions made by match officials as final and binding, even when they are disagreed with.
- Refrain from using abusive, offensive, threatening, intimidating, or insulting language, gestures, or behaviour towards match officials.
- Not make derogatory or demeaning remarks, whether spoken, written, or posted online, about any match official.
- Support a positive and safe environment by challenging and reporting inappropriate behaviour directed at match officials.

#### **Prohibited Behaviour**

The following behaviours are strictly prohibited and will trigger disciplinary action:

- Verbal abuse, including, but not limited to swearing, slurs, name-calling or mocking directed at match officials
- Threatening language or aggressive gestures
- Harassment, bullying, or repeated criticism
- Posting or sharing derogatory comments, memes, or insults about match officials online or on social media

## **APPENDIX L**

### **GUIDELINES FOR ANNOUNCERS**

- K1. As part of the entertainment package, there has been, in the last few years, an increase in the efforts applied at SLB matches to 'get the crowd going' by Announcers over the public address system. This puts SLB in a difficult position regarding FIBA's competition regulations which allow Announcers only to give information in an impartial way when the ball is out of play. We must also recognise that we are one of the few countries in the world which gives a form of play by play commentary of games. In order to keep this as part of a SLB game promotion we recommend the following guidelines so we can develop the role of the Announcer in a positive way, adding to the match without creating bad feeling by the home crowd to the away team or its supporters.
- K2. Announcers should show no undue bias towards the home team and give full recognition and respect to the away team, their players, coaches, supporters and sponsors.
- K3. The Announcer must also remain seated throughout the match in order not to distract from the playing of the game.
- K4. Function of the Announcer:
1. Welcome spectators to the match including introducing the match
    - (a) Team x vs team y with some brief background on the team
    - (b) The competition including sponsors
    - (c) The 2 teams
    - (d) The match officials
  2. Give a historical account of what happened with the 2 teams
  3. Encourage support for the participants (especially the visiting team)
  4. Point out to spectators aspects of the game other than scoring which may not have come to their attention, e.g. rebounds, assists, etc.
  5. Explain rules in situations which may be unclear
  6. Any aggressive behaviour, chanting or booing etc. towards the away team or officials should be silenced by the announcer, who should stress the goodwill and sportsmanship in basketball.
  7. Commentary will be limited by the same constraints as music
  8. The Announcer should offer no comment (express or implied) on refereeing decisions other than to convey to the audience the nature of the decision, its effect and any penalty involved.
- K5. Preparation
1. Every effort should be made by the Announcer to obtain information before the match so that he/she is able to introduce and personalise players and officials both during the introductions and during the lengthier dead ball situations. Attempts to personalise all players before the game will result in undue delays.
- K6. The Introductions
1. The visiting team should be introduced first. A short accurate introduction is essential (nervous players should not be kept waiting). Introduce the match officials and personalise them too – they are part of the game.
- K7. During the Game
1. The Announcer should highlight:

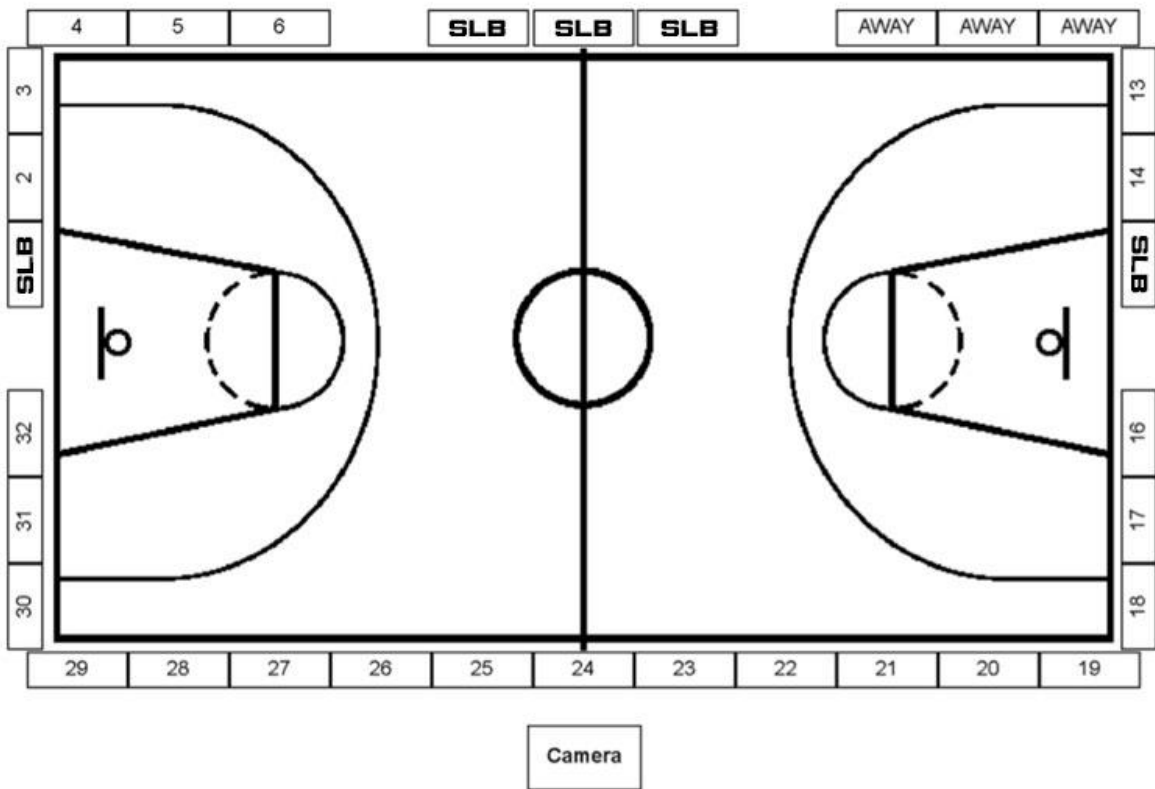
- (a) The scorer of a basket, not every score but when appropriate to the game
- (b) The player who commits a foul, his number, the number of fouls against the player and the team, after the table raises their signal. It is vital that no comment, above and beyond naming the player and describing the offence, as signalled by the referee, should be made until the marker is raised.
- (c) As a substitution occurs, the names and numbers of the players involved.
- (d) As a time-out occurs the team calling the time-out and the number that half.
- (e) At a substitution, time-out and other intervals, the Announcer can contribute information on the state of the game i.e.
  - i. Score
  - ii. Time left to play
  - iii. Team foul situation
  - iv. Leading scorers/rebounders and assists
  - v. Number of time-outs taken
- (f) The comments made during the game must be constructive, add to the presentation or pick up a game that is going flat
- (g) Play by Play commentary should be kept to a minimum. Early in the game it might add to the enjoyment of the spectator to highlight a player when he receives the ball. Every effort should be made not to destroy the concentration of a player about to shoot.
- (h) During an offence there should be no comment on 'off the ball offensive moves' (this would give advantage to the defence). No attempt should be made to describe the offensive or defensive patterns
- (i) All players should be complimented on the good things that happen.
- (j) The Announcer should keep his/her own records of points, fouls etc. as under no circumstances should the scorer be asked to provide this information.
- (k) At half-time announcements of some interesting statistics should be given to keep the spectators involved.

2. Announcers must not:

- (a) Engage in cheerleading, that is encouraging the crowd to cheer performance
- (b) Make detrimental comments on official decisions, or lack of them
- (c) Call 24 seconds
- (d) Count down time situations



**APPENDIX M**  
**COURTSIDE BOARDS**



## APPENDIX N

### DISCIPLINARY GUIDELINES

#### PLAYER

	Incident	Description	Disq Points	After Disq	Not Disq Points	Fine
5	Violent Conduct 3	Continuous violent behaviour and/or physical violence	Unlimited	Unlimited	Unlimited	Up to 6 weeks wages
4	Violent Conduct 2 Verbal Abuse 3	Premeditated physical violence Continuous and aggressive abuse	8-21 added		15+	Up to 3 weeks wages
3	Violent Conduct 1 General Improper Conduct	Physical retaliation	5-10 added		9-15	Up to 2 weeks wages
2	Verbal Abuse 2	Excessive obscene/foul language	3-8 Added		4-12	Up to 1 weeks wages
1	Unsportsmanlike Conduct Verbal Abuse 1	Obscene/foul language	0-3 Added		5-10	NA
	Disqualification	Disqualification	0-10 for DQ + see above			

#### COACHES

	Incident	Description	Disq Points	After Disq	Not Disq Points	Fine
5	Violent Conduct 3	Continuous violent behaviour and/or physical violence	Unlimited	Unlimited	Unlimited	Up to 6 weeks wages
4	Violent Conduct 2	Premeditated violent behaviour (including to own Team Members)	Unlimited	Unlimited	Unlimited	Up to 3 weeks wages
	Violent Conduct 1					
3	Verbal Abuse 3	Continuous and aggressive abuse	3-12 added		15+	Up to 2 weeks wages
2	Verbal Abuse 2	Excessive obscene/foul language	6-12 added		10+	Up to 1 weeks wages
1	General Improper Conduct	Obscene/foul language	0-8 added		Apr-15	NA
	Verbal Abuse 1					
	Disqualification	Disqualification	0-10 for DQ + see above			

## OTHER BASKETBALL PARTICIPANTS

	Incident	Description	Penalty
5	Violent Conduct 3	Continuous violent behaviour and/or physical violence	The Disciplinary Panel has the ability to award any sanction it deems appropriate, and after taking into consideration the exact circumstances and in line with other comparable penalties issued by sports bodies.
4	Violent Conduct 2	Premeditated violent behaviour (including to own Team Members)	
	Violent Conduct 1		
3	Verbal Abuse 3	Continuous and aggressive abuse	
2	Verbal Abuse 2	Excessive obscene/foul language	
1	General Improper Conduct	Including obscene/foul language	
	Verbal Abuse 1	Including general abuse, or derogatory comments made in person or on social media	

## APPENDIX D

### PROTESTS (RULE 32) TIMELINES

End of game	Protest notification window starts
End of game +15 minutes	Protest notification window ends
End of game + 60 minutes	Deadline for protest reasons submitted to the Crew Chief
End of game + 120 minutes	Deadline for Crew Chief's written report
End of game + 180 minutes	SLB notifies Disciplinary Panel and provides them with: <ul style="list-style-type: none"> <li>• Team's protest reasons</li> <li>• Crew Chief's written report</li> <li>• Synergy system video footage</li> </ul>
End of game + 1,440 minutes (24 hours)	Disciplinary Panel notifies result of protest
If the protest is rejected	£500 protest fee becomes payable

### DISCIPLINE (RULE 33) TIMELINES

Incident occurs (see <a href="#">Rule 33.7</a> )	Disciplinary allegation window starts
Incident occurs + 48 hours	Disciplinary allegation window ends
Disciplinary allegation window ends + 24 hours	SLB notifies Disciplinary Panel and provides them with: <ul style="list-style-type: none"> <li>• Details of the alleged incident</li> <li>• Synergy system video footage (where relevant)</li> </ul>
Disciplinary allegation window ends + 24 hours	Disciplinary Panel notifies Club Administrator of the alleged incident Incident responsibility now lies with Disciplinary Panel
Incident notified to Disciplinary Panel + 48 hours	Disciplinary Panel requests initial information, along with required timescales for response