



COVID-19: Return to Play Procedures

The plans and protocols contained within this document were developed based on the current knowledge of COVID-19 and related restrictions from government officials as of October 12, 2020. This is a working document that may be updated as more information is received from our governing bodies.

Return to Play Committee Members

Allison Singh (Chair)

Erin Cook

Andrew Hall

Jim Whitechurch

Kathy Brown (Club Manager)

Nancy Culham

Ryan Lavell

Guiding Documents/Resources

- A Framework for Reopening Our Province: Stage 3 (Government of Ontario)
<https://www.ontario.ca/page/framework-reopening-our-province-stage-3>
- Return-to-Play Guidelines: A Resource for Boards of Directors, Volunteers and Managers of Canadian Curling Rinks (Curling Canada, Ontario Curling Association) see: ontcurl.com
- Return-to-Play FAQ (Ontario Curling Association) see: ontcurl.com
- Restaurant and food services health and safety during COVID-19 (Government of Ontario)
<https://www.ontario.ca/page/restaurant-and-food-services-health-and-safety-during-covid-19>
- Section 22 Order on the use of face coverings in commercial establishments (WDG Public Health)
https://www.wdgpulichealth.ca/sites/default/files/file-attachments/news/class_order_-_face_masking_-_july_17_2020_004_0.pdf
- CurlON Covid-19 Re-opening Kit
<https://mailchi.mp/d4fde48ac521/curon-re-opening-kit-and-interpretations-document>

Goals

- To ensure that the members of the Guelph Curling Club (GCC) may resume the sport of curling in a safe and healthy manner during and following the COVID-19 pandemic. The plans and protocols put forth give priority to the health and safety of all who enter the curling club.
- To safely and responsibly maximize our business potential by considering all aspects of our business, including on- and off-ice rentals, to ensure the best financial health possible for our business during and following the COVID-19 pandemic.



Building Safety

- All individuals entering the GCC and/or participating in sanctioned activities must sign and comply with a Declaration of Compliance –Covid-19.
- All individuals participating in on-ice activities must sign a Release of Liability, Waiver of Claims; Indemnity Agreement if 18 years of age or over, or a parent/guardian must sign an Informed Consent and Assumption of Risk Agreement if participate is under 18 years of age.
- Anyone entering the GCC will be asked to complete the Wellington-Dufferin-Guelph Public Health (WDGPH) self-screen (https://www.wdgpulichealth.ca/sites/default/files/covid_19_screening_oster_with_assessment_centres.pdf) and asked to stay home if they answer 'yes' to any of the questions. A poster will be placed on the front door as a reminder to those entering, and patrons must not enter the club if they answer 'yes' to any of the questions.
- In accordance with the Public Health Section 22 Order, face coverings will be required in the public areas of the GCC (main and downstairs lounges, washrooms, changing rooms) unless when seated while eating or drinking. Face coverings will be highly encouraged, but not mandatory, on the ice surface during game play. **NEW!** Please note that when wearing a face covering on the ice surface, you may pull it down off of your face when throwing or sweeping alone as you are appropriately distanced from others at these times.

Hygiene and Cleaning

- We will adopt the CurlON guidelines in these areas with the club manager working with staff to implement enhanced cleaning protocols using a disinfecting solution and process that follows public health guidelines.
- All tables and other high contact surfaces (e.g. door knobs, hand rails, chair handles, faucets, rock handles, etc.) will be cleaned and disinfected by staff prior to each new draw or group entering the club.
- **NEW!** We are currently in the process of contracting a third-party company (Enviro-Master Services) to conduct bi-weekly Virus Vaporizer/Sani-Guard Electrostatic spraying service of high-touch areas throughout the club (i.e. washrooms, changerooms). This will be in addition to daily cleaning performed by club staff.
- Hand sanitizer stations will be set up outside of all high contact zones and key areas (see floor plans on page 4).
- Staff will be required to wash their hands each time they enter or exit their working area, any time they complete cleaning or stocking activities, and as often as needed while serving customers. Staff will be trained to wash and/or sanitize their hands as frequently as possible.



Curling Centre Layout and Navigation

- Up to 50 players will be permitted on the ice surface (6 sheets of full games) along with 50 people in the main lounge area. Note that the 50 people limit does NOT include staff or volunteers.
- We will use sheets 1&2 , 4&5, and 7&8 leaving 3 & 6 open to allow for greater distancing.
- Locker rooms will be used and lockers will be rented as usual. Lockers will be cleaned weekly as they will only be touched by the individual renting them. Coat and boot racks will be available for those who do not have a locker.
- The curling club has been arranged to allow for safe distancing and movement of people. Patrons will be asked to follow the flow determined by the Floor Plans (see page 4). Please note:
 - The front door to the club will be used as an entrance ONLY. The side door closest to the parking lot will be used as the building Exit.
 - There is overlap between the building and ice exits, but time limits on games and on social time in the main lounge will ensure that there is no overlap between those leaving the building and leaving the ice surface.
 - Locker rooms will be open for those who are renting lockers. Please maintain physical distancing as best you can in these spaces
 - There is no entry into the main lounge prior to your game. Players will remain in the designated waiting areas (see floor plans) until the ice maker indicates that the ice is ready. **NEW!** Players who are going onto sheets 5, 7 & 8 will wait in the designated area upstairs behind the glass using the orange spots of tape as physical distancing guides. All other players will remain downstairs until told to enter the ice surface.
 - Face coverings must be worn at all times in these areas UNLESS you are seated while eating or drinking.

Curling Equipment

- Club equipment such as brooms, sliders, grippers, sliding and delivery devices will not be available for use. Members will be required to bring their own equipment. Members who do not already have equipment are encouraged to purchase it through our proshop.
- When or if on-ice rentals resume, protocols will be developed for proper cleaning and storage of shared equipment.
- We will adopt CurlON guidelines for rock disinfecting and measuring procedures:
 - Stones: Stones will be disinfecting at the start of each draw. Players select their two stones and there is no interchanging of stones during a game. Players should not touch any stones other than their own. Let the player delivering the next stone retrieve their own stone.

COVID-19 Return to Play Procedures | Guelph Curling Club



Established 1838

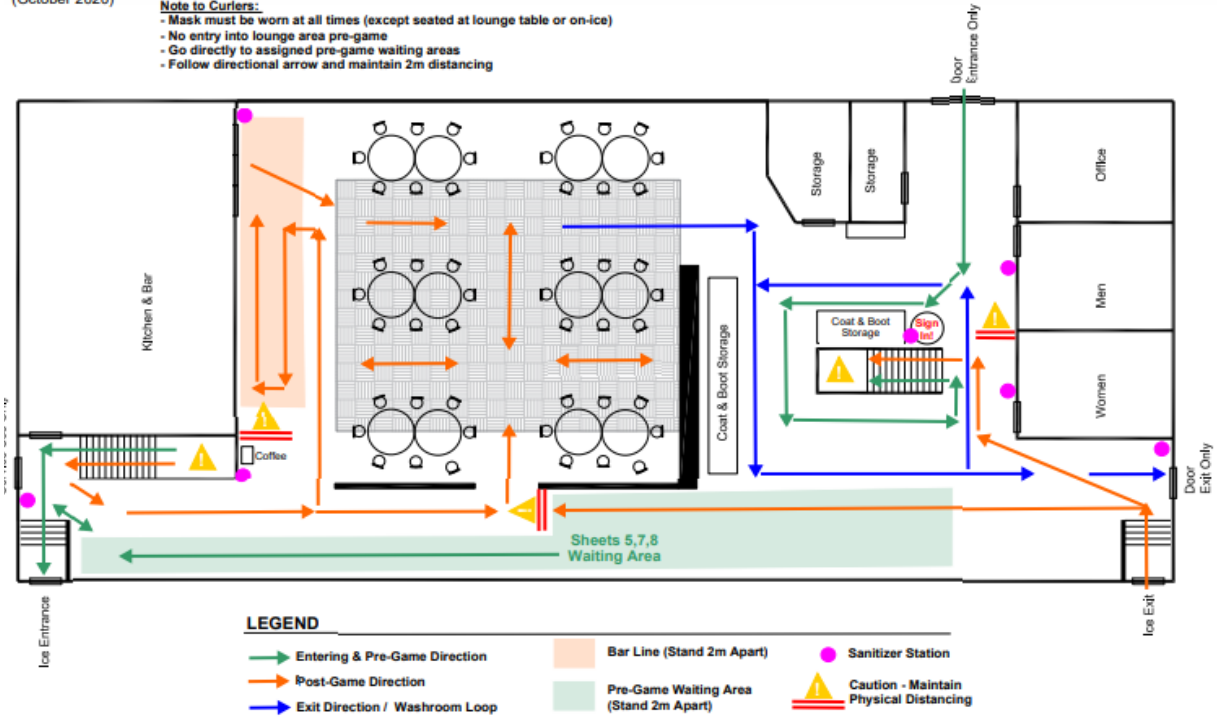
"A Royal Experience"

- Measuring: remove gloves, sanitize your hands, conduct measure, return measure device to its normal location, sanitize your hands.

Floor Plans

MAIN FLOOR

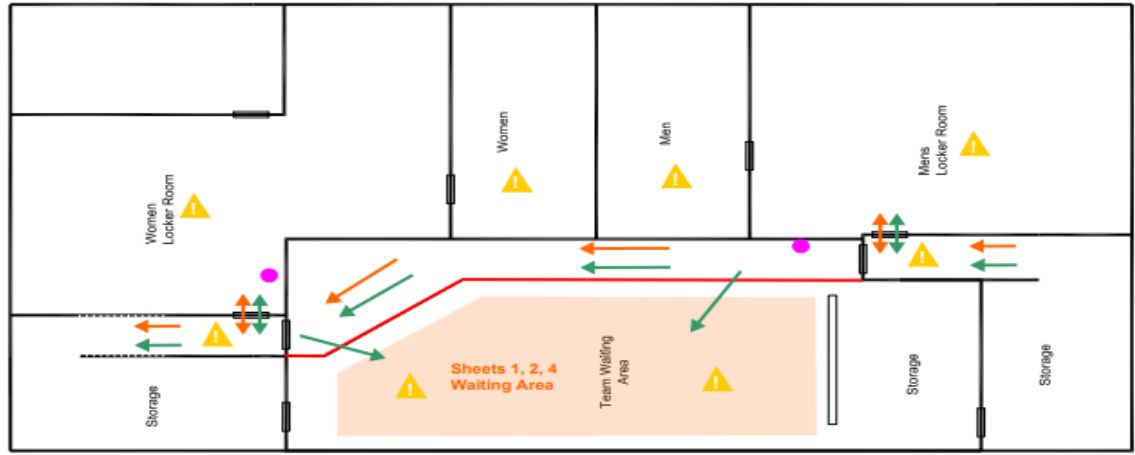
- Note to Curlers:**
- Mask must be worn at all times (except seated at lounge table or on-ice)
 - No entry into lounge area pre-game
 - Go directly to assigned pre-game waiting areas
 - Follow directional arrow and maintain 2m distancing



LEGEND

Entering & Pre-Game Direction	Post-Game Direction	Exit Direction / Washroom Loop	Sanitizer Station	Caution - Maintain Physical Distancing
Bar Line (Stand 2m Apart)	Pre-Game Waiting Area (Stand 2m Apart)			

BASEMENT



LEGEND

Entering & Pre-Game Direction	Post-Game Direction	Exit Direction / Washroom Loop	Sanitizer Station	Caution - Maintain Physical Distancing
Bar Line (Stand 2m Apart)	Pre-Game Waiting Area (Stand 2m Apart)			



Playing the game/League Considerations

- Individual leagues will have a limit of 50 players. If a league has more than 50 players then it will be necessary to assign teams to an A or B division. Up to 50 players in A div. and 50 players in B div. A team will not be allowed to move from one division to another during the curling year.
- CurlON has determined that a player can play in more than one league at the same club.
- As only one sweeper will be permitted, teams may choose to sign up for leagues as three person teams.
- Any spares MUST be members of the GCC. Members will only be allowed to spare in the leagues that they indicate at the start of the season (on the registration form), and in only one division of that league.
- Teams are permitted to sign up with five players, but the extra player may play ONLY with that team (cannot spare on other teams even in the same league).
- We will adopt CurlON guidelines for physical distancing during the game (see diagram on page 7). HOWEVER, because we have sheets 3 and 6 blank, players on the Non-Delivering Teams on sheets 2, 5 and 8 will be asked to stand to the right side of the sheet (when looking from the glass) instead of the left as shown in the CurlON diagram. This will ensure maximum distance between players. We will be developing methods to educate members on these movements and ask that everyone be patient and kind to one another as we all learn this new way of playing the game. If you find yourself struggling to follow these precise movements, please ensure that you are properly distanced from other players.
 - **Non-Delivering Team:** The two sweepers of the non-delivering team should be positioned on the new ice markings while the other team is throwing. The player of the non-delivering team whose turn it is next to deliver should be positioned at the hogline on the same side as the two sweepers. The Skip (or Vice) will stand on the backboards but no closer than the hack.
 - **Delivering Team:** The Skip has control of the house. The player whose turn it is to deliver is in the hack. The non-sweeping player is on the backboards. The sweeping player is at the T-Line. Once the stone has been released, the player who delivered the stone proceeds down the centre line of the ice until the halfway point to the marking or to the hog line if it is their turn next. After the stone comes to rest, the sweeper proceeds to the halfway markings. The non-sweeper travels to the halfway mark or the hog line depending on their turn to deliver or not
- Do not shake hands prior to the game.
- Flip using personal coin or app on your phone.
- Score boards will not be used. Keep score in your head or on someone's phone.
- Stones will be kept in a straight line on the ice.

COVID-19 Return to Play Procedures | Guelph Curling Club



Established 1838

"A Royal Experience"

- Members should not arrive more than 15-20 minutes before game time. There will be no pre-game bar or food service.
- No spectators are allowed. **NEW!** The coach of the University of Guelph teams will be permitted to watch their students' games.
- Only one sweeper is permitted, and they follow the rock all the way down the ice. No other people can sweep (i.e. vice and skip in the house). **NEW!** The non-sweeping player may follow the rock down the ice to help judge weight if proper distance is maintained.
- **NEW!** We encourage teams to use nonverbal forms of communication on the ice whenever possible. For example, the skip may wish to put a piece of green tape on one side of their glove and red on the other to signal to teammates whether to start or stop sweeping.
- Modest changes have been made to draw times to allow for proper cleaning between draws and prevent overlap of players in common areas. Most evening game times will be at 6:00pm and 8:30pm. All other leagues (i.e. daytime) remain unchanged from previous season.
- Games will be required to be at least one and a half hours (approximately 6 ends) long to ensure no crowding in the lounge area. Even if games finish prematurely, players **must** stay on the ice until this time so that staff are able to clean the lounge.
- Detailed Timing of Evening Draws:

Time	Activities
5:40pm	First Draw Curlers arrive and go downstairs Disinfecting from afternoon leagues has been done (4:00-5:30pm)
6:00-7:30pm (min)	First draw curlers are on the ice Disinfecting of high-touch areas completed as needed
7:50pm	No new ends can begin for first draw
7:30-8:10pm	First draw curlers come off of the ice, quickly retrieve items from downstairs, and enter the main lounge area or leave the building if they are not staying for post-game socialization.
8:10-8:30	Second draw arrives and goes directly downstairs
8:30-10:00pm (min)	Second draw curlers are on the ice
9:30pm	First draw curlers must leave the lounge Tables and chairs can be cleaned
10:00pm	Second draw curlers begin coming from the ice into the lounge area.



Re-opening the Bar

- Time in the lounge will be limited to ensure there is time for cleaning between the two draws. First draw must leave by 9:30pm. **NEW!** Alcohol may not be served after 11:00pm and consumption of alcohol is not permitted past 12:00am.
- Floor plans have been developed to have 8 people seated around TWO of our large round tables and to allow for the required 2 metres of physical distance between tables.
- Changes will be made to bar service to increase efficiency and ensure the safety of both staff and patrons. **NEW!** Changes to bar service will include the following: no draught beer and asking patrons to clear their tables to a designated place to help free bartender time for extra cleaning and sanitization.

COVID-19 Positive Case

- CurlON has developed a contact tracing system to be used by clubs. **NEW!**
 - Each member will receive an email from CurlON with a unique QR Code that can be saved on a smart phone or printed on a piece of paper. For those who print the code, the club can laminate it on a business card during play on the first night of league play.
 - Upon arrival at the club, the member must scan their QR Code on the App near the front door.
 - The QR Code will allow member information to be stored for 30 days as required by public health authorities.
- In the event of a positive case, the Guelph Curling Club may be asked by WDGPH to provide the names and contact information of individuals who may have been at the club during the times they request.
- Any further action (i.e. club closure, enhanced cleaning) will be dependent upon direction from WDGPH.
- **NEW!** The club will only communicate with members regarding a positive case of COVID-19 if directed to do so by WDGPH. We ask that members respect one another's privacy and allow WDGPH to manage contact tracing. Please do not report COVID-19 cases to other members unless you are directed to do so by WDGPH.

Failure to Comply

- **NEW!** By signing the Declaration of Compliance form, you are agreeing to abide by the safety, physical distancing and hygiene procedures of the club. The Declaration form states: *"The Organization may remove the individual from the facility or from participation in the activities, programs or services of the Organization at any time and for any reason if the Organization believes, in its sole discretion, that the individual is no longer in compliance with any of the standards described in this document."*

Physical Distancing During the Game

- See diagram below

COVID-19 Return to Play Procedures | Guelph Curling Club



***Note:** at our club, the BLUE players 1, 2 & 3 will be on the other side of the sheet when on sheets 2, 5 and 8.

