

Twinkle Twinkle Little Star

Guitar

E A E

0 0 7 7 9 9 7

T
A
B

Detailed description: This system shows the first four measures of the guitar part. The key signature is three sharps (F#, C#, G#) and the time signature is common time (C). The first measure has a whole note E4. The second measure has a whole note E4. The third measure has a whole note G4. The fourth measure has a whole note G4. The fifth measure has a whole note A4. The sixth measure has a whole note A4. The seventh measure has a whole note B4. The eighth measure has a whole note B4. The guitar chord diagrams are: E (open strings), A (x02232), and E (open strings). The fretboard diagram shows fret numbers 0, 0, 7, 7, 9, 9, 7 for the strings T, A, and B.

B7 E B7 E

5 5 4 4 2 2 0

Detailed description: This system shows the next four measures. The first measure has a whole note B4. The second measure has a whole note B4. The third measure has a whole note A4. The fourth measure has a whole note A4. The fifth measure has a whole note G4. The sixth measure has a whole note G4. The seventh measure has a whole note F#4. The eighth measure has a whole note F#4. The guitar chord diagrams are: B7 (x21232), E (open strings), B7 (x21232), and E (open strings). The fretboard diagram shows fret numbers 5, 5, 4, 4, 2, 2, 0 for the strings T, A, and B.

E A E B7

7 7 5 5 4 4 2

Detailed description: This system shows the final four measures. The first measure has a whole note E4. The second measure has a whole note E4. The third measure has a whole note D4. The fourth measure has a whole note D4. The fifth measure has a whole note C4. The sixth measure has a whole note C4. The seventh measure has a whole note B3. The eighth measure has a whole note B3. The guitar chord diagrams are: E (open strings), A (x02232), E (open strings), and B7 (x21232). The fretboard diagram shows fret numbers 7, 7, 5, 5, 4, 4, 2 for the strings T, A, and B.

E



A



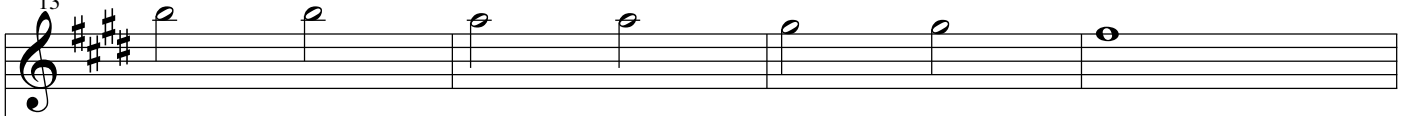
E



B7



13



7

7

5

5

4

4

2

E



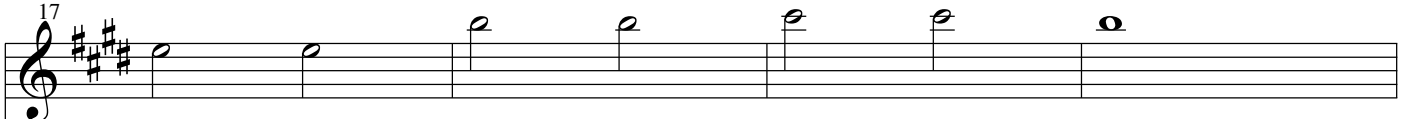
A



E



17



0

0

7

7

9

9

7

B7



E



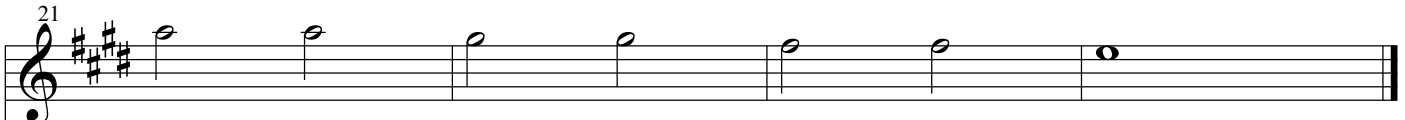
B7



E



21



5

5

4

4

2

2

0