

## 10.1" HDMI Open Frame Display

1280x800, Model - UM-1080H-OF



*This display employs the latest IPS technology to ensure that panel color performance remains nearly constant at all viewing angles.*

### Open Frame 10.1" IPS HDMI Monitor

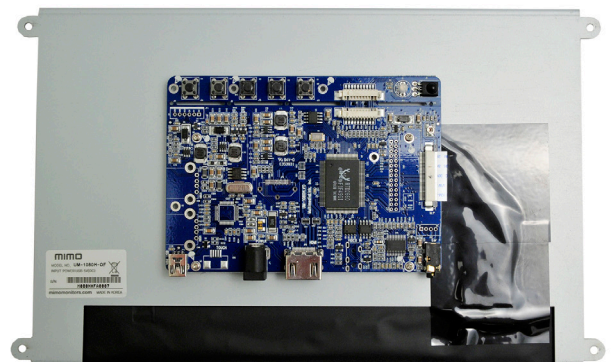
Now with the ubiquitous HDMI interface, the UM-1080H-OF is our widest viewing angle open frame 10.1" monitor. The UM-1080H-OF is a 10.1" open frame monitor (display-only) for applications that will be integrated into other equipment or enclosures. Same slick design features but in a long-lasting molded metal product cycle-enclosure. Future generation panels can be phased-in without external changes. The screen can display in either landscape or portrait orientations and has nearly 180 degree viewing angles. The UM-1080H-OF open frame monitor is designed to provide the most cost effective solutions for consumer, retail POS, and hospitality markets.

#### General Specifications:

- Screen: 10.1" diagonal, IPS Panel
- Driver element L a-si TFT active matrix
- Viewing angles: 85/85/85/85
- Pixel pitch: 0.1695 (H) x 0.1695 (V)
- Pixel arrangement: RGB vertical stripe
- Display colors: 262,144
- Surface treatment: Hard coating (3H), anti-glare
- Contrast ratio: 800:1
- Luminance, White: 350 CD/m<sup>2</sup>
- Capacitive touch optional
- HDCP Compliant
- Rear 4 point mounting for secure installation
- Utilizes HDMI input for video and USB or 5v DC for power.

#### Applications:

- kiosk information system
- gaming and amusement
- light industrial shop-floor automation
- POP/POS

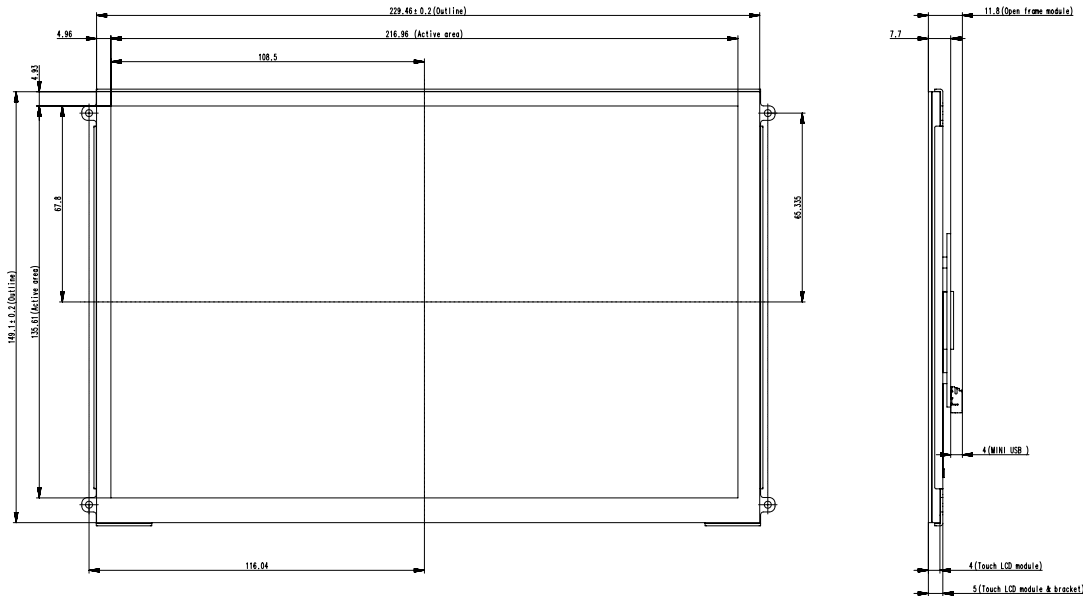


UM-1080H-OF

# Optical Specifications

Item	Symbol	Condition	Min.	Typ.	Max.	Unit	Note	
Contrast Ratio	CR	$\theta_x=0^\circ, \theta_y=0^\circ$ Viewing Normal Angle	500	800	-	-	(2), (5),(7)	
Response Time	$T_R$		-	14	17	ms	(3),(7)	
	$T_F$		-	11	14	ms		
Cross Talk	CT		-	-	4	%	(8)	
Average Luminance of White	$L_{AVE}$		300	350	-	cd/m <sup>2</sup>	(4), (6),(7)	
Color Chromaticity	Red		Rx	Typ - 0.03	0.592	Typ + 0.03	-	(1),(7)
			Ry		0.340		-	
	Green		Gx		0.310		-	
			Gy		0.579		-	
	Blue		Bx		0.150		-	
		By	0.128		-			
	White	Wx	0.308		-			
		Wy	0.324		-			
Color Gamut	CG	47	50		%	(9)		
Viewing Angle	Horizontal	$\theta_{x+}$	80	85		Deg.	(1),(5), (7)	
		$\theta_{x-}$	80	85	-			
	Vertical	$\theta_{y+}$	80	85	-			
		$\theta_{y-}$	80	85	-			
White Variation of 5 Points	$\delta W_{5p}$	$\theta_x=0^\circ, \theta_y=0^\circ$	80	90	-	%	(5),(6), (7)	

# Dimensions and Mechanical Specifications



## Mimo Monitors

743 Alexander Rd. Suite 15  
Princeton, NJ 08540

info@mimomonitors.com

Sales: 1-855-YES-MIMO (937-6466)