



2025 Program Brief

About the Network



RESEARCH IS A PRACTICE OF SERVICE, COMPASSION, AND HEALING. The Providence Research Network produces groundbreaking research and evidence-based innovation so that Providence patients can access the very best care.

Our world-class experts and institutes investigate a wide range of diseases, develop new prevention and treatment strategies, and advance cutting-edge technologies. Each year, our researchers partner with caregivers, patients, and other collaborators in the life sciences industry to improve care and deliver better outcomes.

FROM CANCER TO CARDIOLOGY, OUR WORK IS TRANSFORMING THE PRACTICE OF HEALING TODAY— AND FOR GENERATIONS TO COME.

2025 by the Numbers

PROVIDENCE



7 STATES



51 HOSPITALS



1000+ CLINICS



29M TOTAL PATIENT VISITS

PROVIDENCE RESEARCH NETWORK



1000+ INVESTIGATORS



1500+ ACTIVE STUDIES



\$100M+ RESEARCH FUNDING AWARDED



1695 PRESENTATIONS & PUBLICATIONS

About the Network

What We Do

Shaping the future of care through research and discovery

Our researchers and caregivers collaborate with patients and industry partners to pioneer innovative approaches to preventing, detecting, and treating diseases. Our portfolio includes bench research, clinical trials, and data and health services research.



Our Difference: Research in the Real World

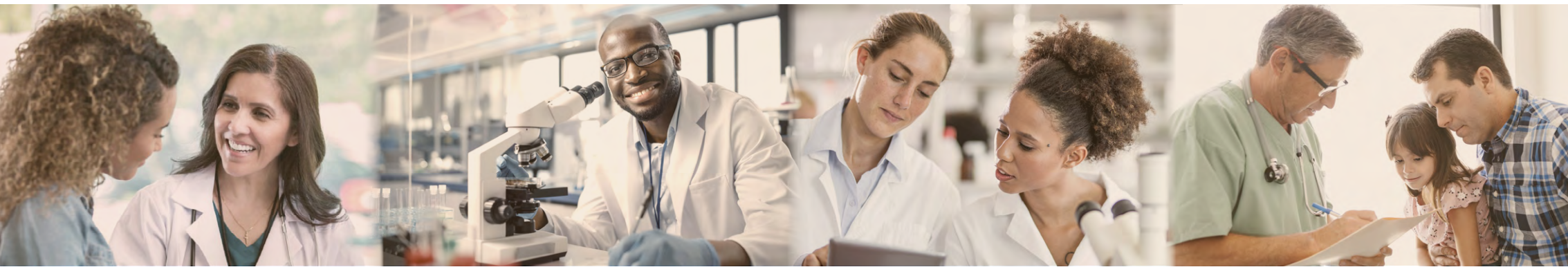


OUR INTEGRATED RESEARCH NETWORK IS BASED IN ONE OF THE LARGEST AND MOST DIVERSE HEALTH SYSTEMS IN THE UNITED STATES. We offer the scientific rigor of an academic medical center grounded in a seven-state community health system.

- ▶ Our **size, scale, and reach** allow us to examine the latest treatments and innovations across many settings and contexts.
- ▶ Our **ability to look across large populations and diverse geographies** enables our researchers to test effectiveness in real-world settings.
- ▶ Our **commitment to engaging those historically excluded from research** drives context-informed healthcare transformation.
- ▶ Our **integrated data infrastructure** offers a holistic patient view.



Stronger Together



AT PROVIDENCE, OUR NETWORK'S IMPACT IS FAR GREATER THAN THE SUM OF ITS PARTS.

By leveraging the collective strengths of more than 1000 investigators across rural and urban communities, prioritizing real-world data, and building a centrally coordinated Providence Research Office, we're making it easier for sponsors to design smarter trials, activate sites quickly, and enroll the right patients.

“

Heading into 2026, we are laser-focused on harnessing the full strength of our integrated research network—using our scale, our diversity, and our reach to accelerate discovery. By centralizing research administration while fully leveraging our footprint, we can create a more connected, efficient, and impactful research enterprise. We call this initiative *Stronger Together*.”



Bill Wright
Chief Research
Officer, Providence

Our Partners

WE PARTNER WITH TOP UNIVERSITIES AND INDUSTRY LEADERS IN BIOTECH, PHARMACEUTICALS, DATA, AND TECHNOLOGY to make a positive impact on human health. Our data scientists collaborate to identify opportunities to improve outcomes. Our investigators test new drugs and devices, design new models for care delivery, and pursue improved care quality.

Research Spotlight



WITH OVER 1500 ACTIVE STUDIES CONDUCTED ACROSS PROVIDENCE EACH YEAR, our integrated network of researchers continues to produce evidence, innovation, and advancements that touch nearly every aspect of health care.

Read on for twelve brief examples of our research's breadth, depth, and impact.

For more information, visit:

- [The Providence research blog](#) for news and stories
- [Providence Experts](#) to learn about our researchers
- [Providence Digital Commons](#) for peer-reviewed papers, presentations, and more
- [ClinicalTrials.Providence.org](#) to search for active clinical trials





Mary E. Brunkow, PhD

Providence-affiliated researcher wins Nobel Prize for groundbreaking immune system discovery

A researcher at the Providence-affiliated Institute for Systems Biology and two colleagues were awarded the 2025 Nobel Prize in Physiology or Medicine.

[➔ Read more](#)

Patient story

Clinical trials matter, just ask Randy Ridgley

When Randy learned his small cell lung cancer had spread to his brain, he thought his life was over. A phase I clinical trial at Providence gave him something he didn't expect—more time with his grandkids and a new puppy.

[➔ Read more](#)



Providence and the University of Montana partner to advance rural health care through research and innovation

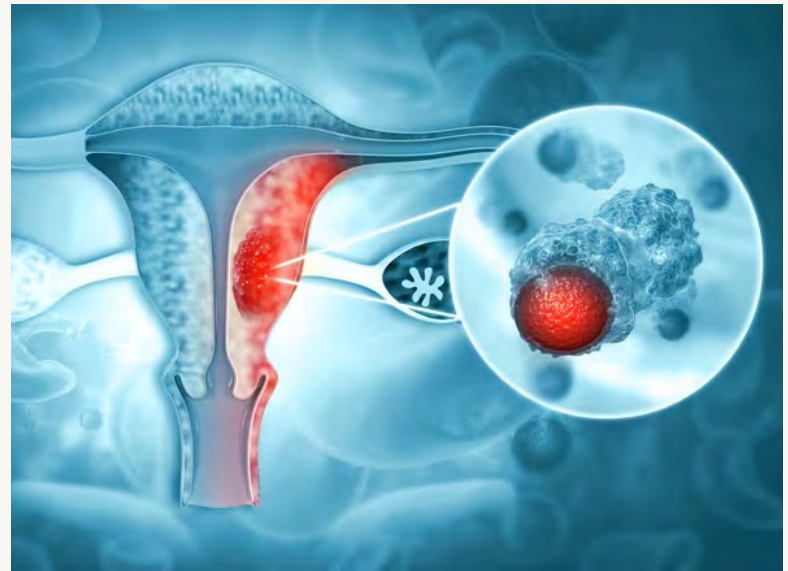
A groundbreaking initiative launched in 2025 aims to integrate clinical expertise, research infrastructure, and community engagement to advance rural and Indigenous health care.

[➔ Read more](#)

\$1.04 million Kuni Discovery Grant awarded to personalize immunotherapy in endometrial cancer

A prestigious grant awarded in 2025 will support Providence-led research with the potential to help design immunotherapy treatments in less than a week for patients facing endometrial cancer.

[➔ Read more](#)



Whole genome sequencing program shows transformative potential for population health

Providence's Geno4ME study highlights early detection, personalized prevention, and the prospect of improved care outcomes associated with whole-genome sequencing.

[➔ Read more](#)



Providence study shows a dramatic rise in goals of care (GOC) conversations after implementing system-wide changes

Enhanced clinician education and electronic health record tools led to a more than 1,100 percent increase in GOC documentation for ICU patients in eight years, as described in a paper published in the *New England Journal of Medicine Catalyst*.

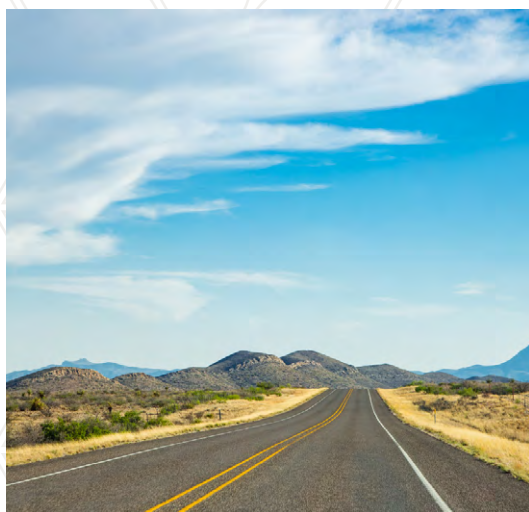
[➔ Read more](#)



Study finds gaps in repeat at-home colorectal cancer screening, putting early detection at risk

Fewer than half of patients completed the recommended repeat at-home colorectal cancer (CRC) screening stool tests, according to a major study co-authored at Providence. This work reveals a need for CRC screening efforts to place greater emphasis on repeat testing.

[➔ Read more](#)



Growing our research impact in West Texas with Covenant Health

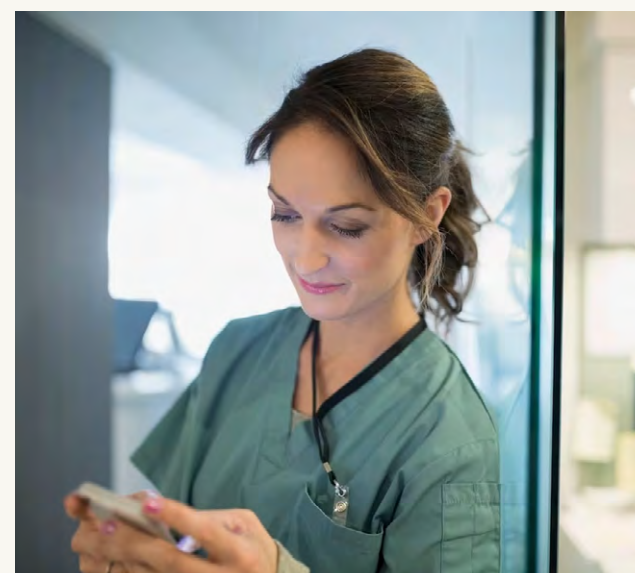
Last year marked several exciting milestones for Covenant Health's efforts to expand access to cancer and stroke research in West Texas. By launching a new stroke research team and joining a state-wide clinical trials network, our Texas affiliate is working to ensure more Texans can benefit from the latest advances in care.

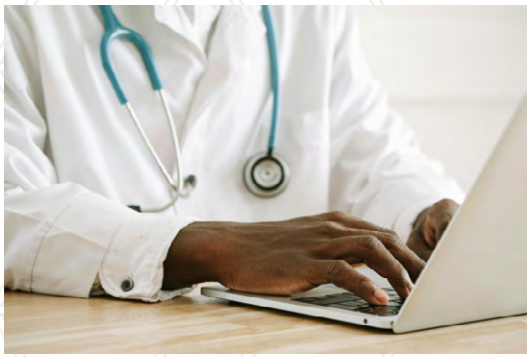
[➔ Read more](#)

Using real-world data to inform next-generation nursing

Providence nurse researchers are providing valuable real-world data on emerging models that pair virtual and bedside nurses. Initial findings from this research suggest that this type of model can help address nursing shortages without adversely affecting patient safety or costs. They also highlight the importance of change management expertise and other support.

[➔ Read more](#)





Researchers find that AI clinical assistant reduces provider burnout

Physicians reported significant reductions in burnout when using the AI clinical scribe Dragon Copilot (formerly known as DAX Copilot), according to a Providence study.

[➔ Read more](#)

Providence research reveals disparities in off-label GLP-1 prescribing

An analysis of nearly 3.7 million U.S. prescriptions found striking disparities in off-label prescribing of GLP-1 RA medications like semaglutide (Ozempic, Rybelsus) and tirzepatide (Mounjaro). The gaps vary widely between different areas of the U.S., and by race, ethnicity, income, and social vulnerability.

[➔ Read more](#)



Real-world data reveal high prevalence and severity of CKD among individuals with type 1 diabetes

A large-scale analysis of health records data found that nearly one in three people with type 1 diabetes has chronic kidney disease (CKD), with more than doubled risks of severe disease in older adults and racial minorities, highlighting the need for more targeted monitoring and interventions.

[➔ Read more](#)



Stay Connected with the Providence Research Network

Find Research at Providence

- ▶ Search for active clinical trials at [ClinicalTrials.Providence.org](https://ClinicalTrials.gov/Providence.org).
- ▶ Learn more about Providence researchers at [Providence Experts](https://ProvidenceExperts.com).
- ▶ View peer-reviewed papers and presentations at [Providence Digital Commons](https://ProvidenceDigitalCommons.org).

Join the Community

- ▶ Read the [Providence Research Network blog](https://ProvidenceResearchNetwork.com/blog) and follow Providence's social sites, or volunteer at your local Providence hospital.

Support Research at Providence

- ▶ Your generous gift to the [Providence Research Network](https://ProvidenceResearchNetwork.com) powers advancements and innovations to help improve healthcare outcomes and ensure access to care for all.
- ▶ Find your local [Providence Foundation](https://ProvidenceFoundation.com), [here](#).

Visit the Providence Research Network

- ▶ Stay up to date with the latest news and find and learn about clinical trials at the [Providence Research Network website](https://ProvidenceResearchNetwork.com).





RESEARCH.PROVIDENCE.ORG