

Meet the Health Equity Team

We are proud to see and lead the division in advancing equity across Providence Swedish. Our team brings deep experience, community partnership and a strong commitment to building a just health system.

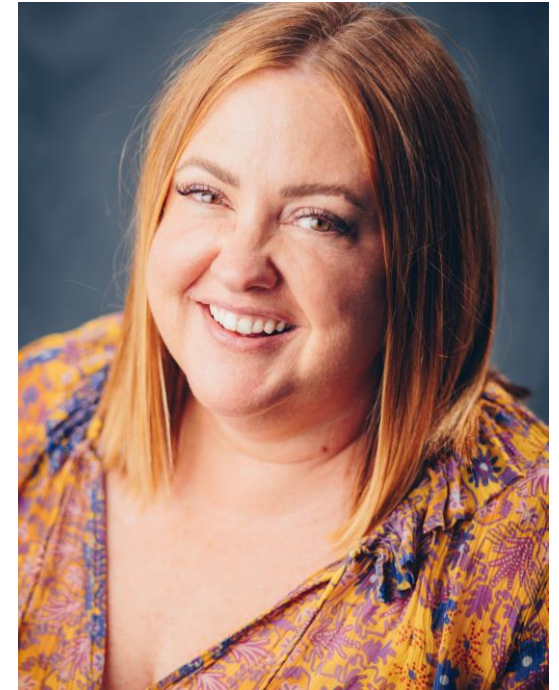
Whitney Haggerson

Vice President, Health Equity & Medicaid

Whitney works with leaders across Providence Swedish to eliminate health inequities and better care for patients with Medicaid and those who are uninsured, by taking data-informed and evidence-based approaches to meet the holistic needs of the individuals we serve.

A champion for female empowerment, Whitney cofounded Providence St. Joseph Health's (PSJH) first-ever Women's Caregiver Resource Group to support gender equity at her workplace.

Outside of work, Whitney serves as the Board Chair for Boyer Children's Clinic, a Seattle based non-profit that provides early intervention for children with neuromuscular disorders or developmental delays.



Marisela Revuelta Cervantes

Principal Program Manager, Health Equity & Medicaid

Marisela is a devoted advocate for health equity, holding a Master of Healthcare Administration (MHA), PMP certification, and Lean Six Sigma Black Belt. As a Latina immigrant and first-generation high school and college graduate, she leverages her lived experiences of advocating and interpreting for her parents from an early age. Marisela leads transformative projects that focus on eliminating healthcare disparities and enhancing access through process improvement and change management.