

Reconciling Trends of Mean Trophic Index and Mean Temperature of the Catch in the Eastern Mediterranean and Black Seas

ÇETIN KESKIN¹ and DANIEL PAULY²

¹Faculty of Fisheries, University of Istanbul, Ordu St. No: 200,
34470 Laleli, Istanbul, Turkey

²*Sea Around Us*, Institute for the Oceans and Fisheries, 2202 Main Mall,
University of British Columbia, BC, Canada, V6T 1Z4

Corresponding author: seahorse@istanbul.edu.tr

Handling Editor: Kostas Stergiou

Received: 14 August 2016; Accepted: 11 October 2017; Published on line: 26 April 2018

Abstract

The mean trophic level, i.e., the Mean Trophic Index (MTI) and Mean Temperature of the Catch (MTC) were estimated for Turkish waters in the Eastern Mediterranean and the Black Sea based on the reconstructed marine fisheries catches (consisting of $N = 88$ species and/or higher taxa) in Turkish waters for the year 1950 to 2010. The MTI decreased in both regions of Turkey, following expectations, but the MTC showed different trends in these two regions. It increased (by $0.48\text{ }^{\circ}\text{C}\cdot\text{decade}^{-1}$), along with the SST in the Eastern Mediterranean, while it fluctuated in the Black Sea. This fluctuating behaviour, however, was similar to the fluctuating tendency of SST in the Black Sea. This suggests that the MTI and MTC can be relied upon as indicators of fisheries impacts on ecosystems, and of the impact of changing temperatures on fisheries, respectively.

Keywords: Catch composition, ecological indicators, climate change, Eastern Mediterranean Sea, Black Sea.

Introduction

The last decades, which saw an intensification of the impact of fisheries on marine ecosystems worldwide (Pauly *et al.*, 1998; Jackson *et al.*, 2001; Watson *et al.*, 2013), also exhibited the first sign of the impact of global warming on marine ecosystems (Cheung *et al.*, 2013). This is particularly true in the Eastern Mediterranean and the Black Seas, where fishing intensity has been intense (Daskalov *et al.*, 2007; Vasilakopoulos *et al.*, 2014), as have been the impact of climate change (Ludwig *et al.*, 2009; Raitos *et al.*, 2010). However, the trends of indicators reflecting these two types of impacts differ in their behaviour. The Marine Trophic Index (MTI; Pauly & Watson, 2005), reflecting the depletion of large, high-trophic level fishes relative to small fishes is declining in these two ecosystems, as expected, but the Mean Temperature of the Catch (MTC; Cheung *et al.*, 2013), an indicator of global warming, which is increasing in the Eastern Mediterranean, as expected (Tsikliras & Stergiou, 2014; Keskin & Pauly, 2014), fluctuates in the Black Sea, which is contrary to expectations, at least when these expectations are not informed by the peculiar thermal history of the Black Sea. Thus, account must be taken, when using with the MTC, of the spatial and temporal scales of the changes in distribution induced by change in SST, as these changes, in some areas, can run counter to the generally observed poleward direction of fish migrations

(Pinsky *et al.*, 2013). This contribution presents the data, concepts and methods which allow resolving this apparent mismatch.

Materials and Methods

The marine fisheries catches of Turkey for the year 1970 to 2010 in the Eastern Mediterranean and the Black Sea (i.e., excluding the Bosphorus, Sea of Marmara and Dardanelles), as 'reconstructed' by Ulman *et al.* (2013), were used for this study. Reconstructed catches include, in addition to official data, previously unreported industrial, artisanal, recreational, and subsistence catches, along with discards (see also Pauly & Zeller 2016 and www.seaaroundus.org). The reconstructed catches exclude the substantial take of Turkish vessels operating outside the Exclusive Economic Zone (EEZ) of Turkey in the Black Sea. However, catches of sprat (*Sprattus sprattus*) covering the years 1992 to 2010 were excluded, as this species was not identified as such in Turkish catch statistics prior to 1992. Also, the huge 2005 catch of Atlantic bonito (*Sarda sarda*), a fish which, depending on environmental conditions, spawns in the Black, Marmara or Mediterranean Seas (Demir, 1957), was considered to be an outlier and omitted from the MTI and MTC computation.

For the Mediterranean, the catches that were included were as reconstructed by Ulman *et al.* (2013) for the coastal waters of Turkey. The areas thus covered are shown on Figure 1.



Fig. 1: Regions from which the fishery catches used in this study originated. The 3 dots in the Southeast Black Sea document the three points whose SST values were averaged to obtain a SST trend characterizing the core area of Turkish fisheries in the Black Sea. The dotted line separates what Shapiro *et al.* (2010) call the colder “deep Black Sea” from the warmer “Western shelf” of the Black Sea.

The Turkish catches from these two areas consisted of $N = 88$ species and/or higher taxa (henceforth ‘species’) for which trophic levels and preferred temperatures were available or could be inferred (Table 1a for fishes and Table 1b for invertebrates in Supplementary Material), as required for the calculation of the MTI and MTC indices.

The MTI was calculated from:

$$MTI_i = \frac{\sum_i^n TL_i \cdot Y_{i,k}}{\sum_i^n Y_{i,k}} \quad \dots 1)$$

where $Y_{i,k}$ is the catch of the n species i in year k in a specific region, TL_i the trophic level of species i and TL_i values were obtained from FishBase (www.fishbase.org; Froese & Pauly 2014) for fish species and higher taxa, and from SeaLifeBase (www.sealifebase.org; Palomares & Pauly 2014) for invertebrates species.

Similarly, the MTC was calculated from:

$$MTC = \frac{\sum_i^n T_i \cdot Y_{i,k}}{\sum_i^n Y_{i,k}} \quad \dots 2)$$

where $Y_{i,k}$ is, as previously, the catch of the n species i in year k in a specific region, while T_i is the temperature preference of species i . Herein, T values were obtained from the supplementary online material of Cheung *et al.* (2013), as derived by superposing the distribution maps described in Palomares *et al.* (2016) onto sea temperature from the U.K. Meteorological Office observation dataset (<http://hadobs.metoffice.com/hadisst/>). This yielded Temperature Preference Profiles (TTP) which are generally Gaussian-shaped and whose mode can be assumed to be the preferred temperature of the species in question (Cheung *et al.*, 2008, 2013).

Given that a comprehensive account of the oceanog-

graphy of the Turkish EEZ in the Black Sea does not appear to exist, the temperatures we used to represent this body of water are the means SSTs at three points in the south-eastern part of the Turkish Black Sea EEZ (see Fig. 1), corresponding to its core area in term of fisheries (Ulman *et al.*, 2013). The SSTs were derived for the years 1970 to 2010 from the COBE-SST2 data, provided by the NOAA/OAR/ESRL PSD, Boulder, Colorado, USA (<http://www.esrl.noaa.gov/psd/>).

Results and Discussion

The reconstructed catch data used here, from Ulman *et al.*, (2013), are higher than the landings data Turkey reports to the Food and Agriculture Organization of the United Nation (FAO). The differences are due mainly to unreported landings (22 %), discards (9%), and recreational and subsistence catches (9%). However, as these additional catches are not well disaggregated taxonomically, they were not used here. Thus, our MTI and MTC indicators are based on a catch composition largely similar to that of the catches reported by FAO on behalf of Turkey.

The MTI, i.e., the mean trophic level of the catch, decreased in both regions of Turkey. In the Eastern Mediterranean, it decreased significantly ($p < 0.05$) at a low but steady rate of $0.018 \text{ TL}\cdot\text{decade}^{-1}$ (Fig. 2A). This confirms previous documentation of fishing down in the Eastern Mediterranean (Stergiou, 2005; Stergiou & Christensen, 2011). In the Black Sea, where ‘fishing down’ is well documented (Daskalov *et al.*, 2007), the MTI decreased significantly ($p < 0.01$), from 3.5 in the late 1970s/early 1980s to about 3.1 in the late 2000s and 2010, i.e., at the very high rate of $0.127 \text{ TL}\cdot\text{decade}^{-1}$ (Fig. 2B). This figure also confirms that massive ecosystem shifts occurred from the late 1970s to the mid-1990s in the Black Sea (Daskalov *et al.*, 2007), which induced strong biomass and hence catch oscillations (Knudsen, 2009), reflected in the wavy pattern of Figure 2B.

Given this match with expectations, we can conclude that the reconstructed catch data of Ulman *et al.* (2013) reflect, at least roughly, the relative abundance of the underlying resource species. Also, we can conclude that these resources have been impacted by fisheries as described by Pauly *et al.* (1998), i.e., they have been ‘fished down’.

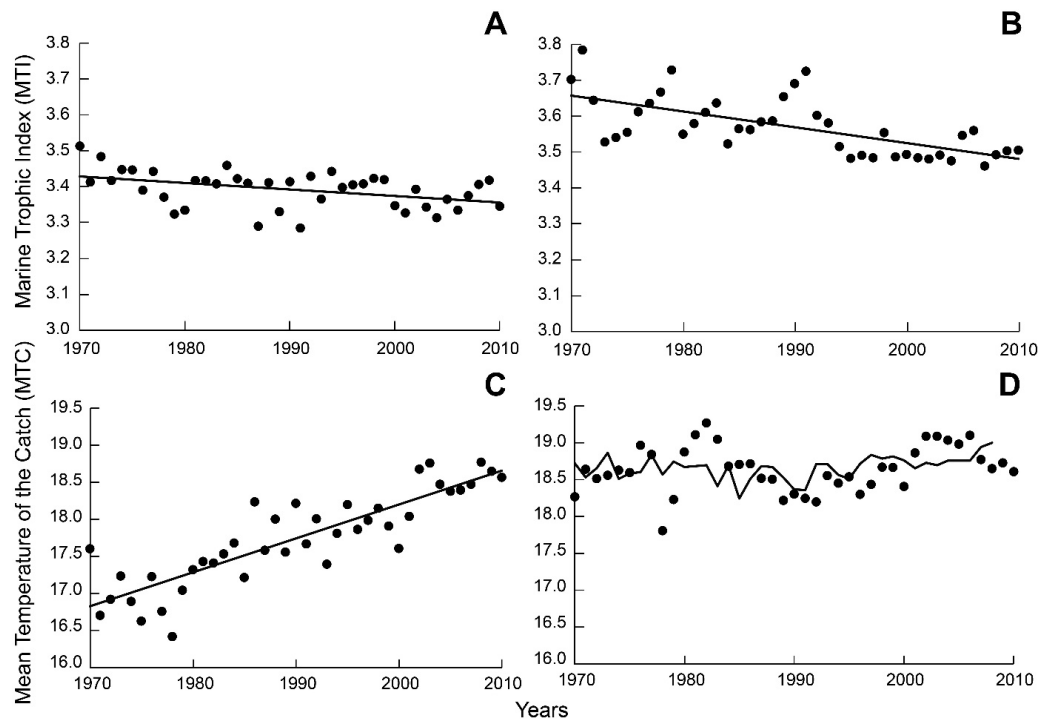


Fig. 2: Indicators of fisheries (MTI) and global warming (MTC) impacts on Turkish fishing grounds. In the Eastern Mediterranean (A, C), the MTI decreases because of ‘fishing down’ (A), and the MTC increases because of global warming; both indicators behave as expected. In the Black Sea (B, D), the MTI declines as expected (B), but the MTC fluctuates (D). However, SST also fluctuates; the regression in Fig. 3 (see Supplementary Material) enabled tentative predictions of MTC from SST, used here to generate the continuous, but fluctuating line linking the dots in D (see text).

The MTC of the Turkish Mediterranean (Fig. 2C) shows a significant increase ($p < 0.05$), of $0.457\text{ }^{\circ}\text{C}\cdot\text{decade}^{-1}$, very close to the observed rate of increase in SST in the Eastern Mediterranean ($0.42\text{ }^{\circ}\text{C}\cdot\text{decade}^{-1}$; Skliris *et al.*, 2011), which is nearly twice the average rate for the world ocean, of about $0.23\text{ }^{\circ}\text{C}\cdot\text{decade}^{-1}$ (Levitus *et al.*, 2005, 2009).

On the other hand, this rate of MTC increase is almost double that estimated by Tsikliras & Stergiou (2014), of $0.29\text{ }^{\circ}\text{C}\cdot\text{decade}^{-1}$, for the period from 1970 to 2010, based on catch data in the database of the General Council for the Fisheries of the Mediterranean (GCFM). These authors explained their low estimate with the underrepresentation, in the GCFM database, of the thermophilic Lessepsian species that have been colonising in the Eastern Mediterranean Sea since the opening of the Suez Canal in 1869. We agree with this assessment.

The MTC of the Turkish Black Sea, in contrast, fluctuates strongly, but without any trend (Fig. 2D), as does the mean SSTs at three areas highlighted by dots in Fig. 1. However, the MTC and SST for the Turkish Black Sea are significantly correlated, once a lag of two years is introduced. (See Supplementary Material, Fig. 3). This is reasonable, as one would expect the (adult) fish biomass of a given species to increase after a year with favourable SSTs for the young of that species, and decrease after a year with unfavourable SSTs.

While SST and MTC in the Turkish Black Sea are weakly, if significantly correlated (Fig. 2D, and Fig. 3 in Supplementary Material), their overall behaviour requires some comments. First, we must recall, with Pinsky *et al.* (2013), that the movements of fish, given global warming, while generally poleward, are actually driven by local oceanographic conditions, i.e., temperature, and thus can run in opposite direction to the overall trend when examined at smaller scales.

In our case the best evidence we have, summarized in Shapiro *et al.* (2010), is that while the north-western Black Sea, which has extensive shelves and other shallow areas, has been warming in the last decades, the deeper central and south-eastern Black Sea region has generally been cooling. Shapiro *et al.* (2010) note that “there was a definite cooling trend in the deep Black Sea over the 20th century. [On the other hand,] there was neither cooling nor warming trend over the length of the 20th century on the Western shelf.” Or put differently: “[t]he long term variability in both deep and shelf areas of the Black Sea is at variance with many other parts of the world ocean (Levitus *et al.*, 2005, 2009)” (Shapiro *et al.*, 2010). These authors further explain that “[u]nusual temperature trends in the Black Sea could be attributed to the variations in the overlying weather pattern.” This is what produced the observed fluctuating SST patterns in the central part of the Turkish EEZ in the Black Sea.

Consequently, we can infer that the MTC of the south-east Black Sea, i.e., of the Turkish EEZ, did track the fluctuating temperatures occurring there. Also, Fig. 2D, rather than being an anomaly, requiring an *ad hoc* expla-

nation, fully support the notion that the MTC reflects local environmental temperatures, and thus can be used as a reliable indicator of climate change effects on exploited fishes and invertebrates.

Acknowledgements

Çetin Keskin wishes to thank the Scientific and Technological Research Council of Turkey (TÜBİTAK) (2219 International Post-Doctoral Research Fellowship Programme). Daniel Pauly acknowledge support from the Sea Around Us, a scientific initiative funded by the Oak, Marisla and other philanthropic foundations. The authors also thank Dr Andrés Aravena, of the Science Faculty, Istanbul University for extracting the Black Sea SST data used here.

References

- Cheung, W.W.L., Lam, V.W.Y., Pauly, D., (Eds), 2008. *Modelling Present and Climate-shifted Distribution of Marine Fishes and Invertebrates*. Fisheries Centre Research Report, 16 (3), 72 pp.
- Cheung, W.W.L., Watson, R., Pauly, D., 2013. Signature of ocean warming in global fisheries catch. *Nature*, 497, 365-368.
- Daskalov, G.M., Grishin, A.N., Rodionov, S., Mihneva, V., 2007. Trophic cascades triggered by overfishing reveal possible mechanisms of ecosystem regime shifts. *PNAS*, 104, 10518-10523.
- Demir, M., 1957. Migrations of *Sarda sarda* Bloch in the Black, Marmara, and Aegean seas; the probable spawning places and times. p. 127-134. GFCM Proc. Tech. Pap., FAO 4.
- Froese, R., Pauly, D. (Eds), 2014. *FishBase*. World Wide Web electronic publication; www.fishbase.org (Accessed 04/2014).
- Jackson, J.B.C., Kirby, M.X., Berger, W.H., Bjorndal, K.A., Botsford, L.W. *et al.*, 2001. Historical overfishing and the recent collapse of coastal ecosystems. *Science*, 293, 629-638.
- Keskin, Ç., Pauly, D., 2014. Changes in the ‘Mean Temperature of the Catch’: application of a new concept to the North-eastern Aegean Sea. *Acta Adriatica*, 55 (2), 213-218.
- Knudsen, S., 2009. *Fishers and Scientists in Modern Turkey: the Management of natural Resources - Knowledge and Identity on the Eastern Black Sea Coast*. Berghahn Books, Oxford.
- Levitus, S., Antonov, J.I., Boyer, T.P., Locarnini, R.A., Garcia, H.E. *et al.*, 2009. Global ocean heat content 1955-2008 in light of recently revealed instrumentation problems. *Geophysical Research Letter*, 36, L07608.
- Levitus, S., Antonov, J.I., Boyer, T.P., 2005. Warming of the World Ocean, 1955-2003. *Geophysical Research Letter*, 32, L02604.
- Ludwig, W., Dumont, E., Meybeck, M., Heussner, S., 2009. River discharges of water and nutrients to the Mediterranean and Black Sea: major drivers for ecosystem changes during past and future decades? *Progress in Oceanography*, 80 (3), 199-217.
- Palomares, M.L.D., Pauly, D. (Eds.), 2014. *SeaLifeBase*. World Wide Web electronic publication; www.sealifebase.org (Accessed 02/2017).
- Palomares, M.L.D., Cheung, W.W.L., Lam, V.W.Y., Pauly, D., 2016. *The distribution of exploited marine biodiversity*, p. 46-58 In: Global Atlas of Marine Fisheries: Ecosystem Impacts and Analysis, Pauly, D., Zeller, D. (Eds). Island Press, Washington, D.C.
- Pauly, D., Christensen, V., Dalsgaard, J., Froese, R., Torres, F.,

1998. Fishing down marine food webs. *Science*, 279, 860-863.
- Pauly, D., Watson, R., 2005. Background and interpretation of the 'Marine Trophic Index' as a measure of biodiversity. *Philosophical Transactions of the Royal Society: Biological Sciences*, 360, 415-423.
- Pauly, D., Zeller, D., 2016. Catch reconstructions reveal that global marine fisheries catches are higher than reported and declining. *Nature Communications*, doi: 10.1038/ncomm10244.
- Pinsky, M.L., Worm, B., Fogarty, M.J., Sarmiento, J.L., Levin, S.A., 2013. Marine taxa track local climate velocities. *Science*, 341, 1239-1242.
- Raitsos, D.E., Beaugrand, G., Georgopoulos, D., Zenetos, A., Puccucci-Papadopoulou, A.M. *et al.*, 2010. Global climate change amplifies the entry of tropical species into the Eastern Mediterranean Sea. *Limnology and Oceanography*, 55(4), 1478.
- Shapiro, G.I., Aleynik, D.L., Mee, L.D., 2010. Long term trends in the sea surface temperature of the Black Sea. *Ocean Science*, 6, 491-501.
- Skliris, N., Sofianos, S., Gkanasos, A., Mantziafou, A., Vervatis, V. *et al.*, 2011. Decadal scale variability of sea surface temperature in the Mediterranean Sea in relation to atmospheric variability. *Ocean Dynamics*, 62 (1), 13-30.
- Stergiou, K.I., 2005. *Fisheries impact on trophic levels: long-term trends in Hellenic waters*, p. 326-329 In: State of the Hellenic marine environment. E. Papanthanasou and A. Zenetos (Eds). Hellenic Centre for Marine Research, Athens.
- Stergiou, K.I., Christensen, V., 2011. *Fishing down food webs*, p. 72-88. In: Ecosystem Approaches to Fisheries: A Global Perspective, Christensen, V., Maclean, J., (Eds). Cambridge University Press, Cambridge.
- Tsikliras, A.C., Stergiou, K.I., 2014. Mean temperature of the catch increases quickly in the Mediterranean Sea. *Marine Ecology Progress Series*, 515, 281- 284.
- Ulman, A., Ş. Bekişoğlu, M. Zengin, S. Knudsen, V. Ünal, C. *et al.*, 2013. From bonito to anchovy: a reconstruction of Turkey's marine fisheries catches (1950-2010). *Mediterranean Marine Science*, 14 (2), 309-342.
- Vasilakopoulos, P., Maravelias, C.D., Tserpes, G., 2014. The alarming decline of Mediterranean fish stocks. *Current Biology*, 24(14), 1643-1648.
- Watson, R., Cheung, W.W.L., Anticamara, J., Sumaila, R.U., Zeller, D. *et al.*, 2013. Global marine yield halved as fishing intensity redoubles. *Fish and Fisheries*, 14, 493-503.

Supplementary Material

Reconciling Trends of Mean Trophic Index and Mean Temperature of the Catch in the Eastern Mediterranean and Black Seas

ÇETIN KESKIN and DANIEL PAULY

Mediterranean Marine Science, 2018, 19(1)

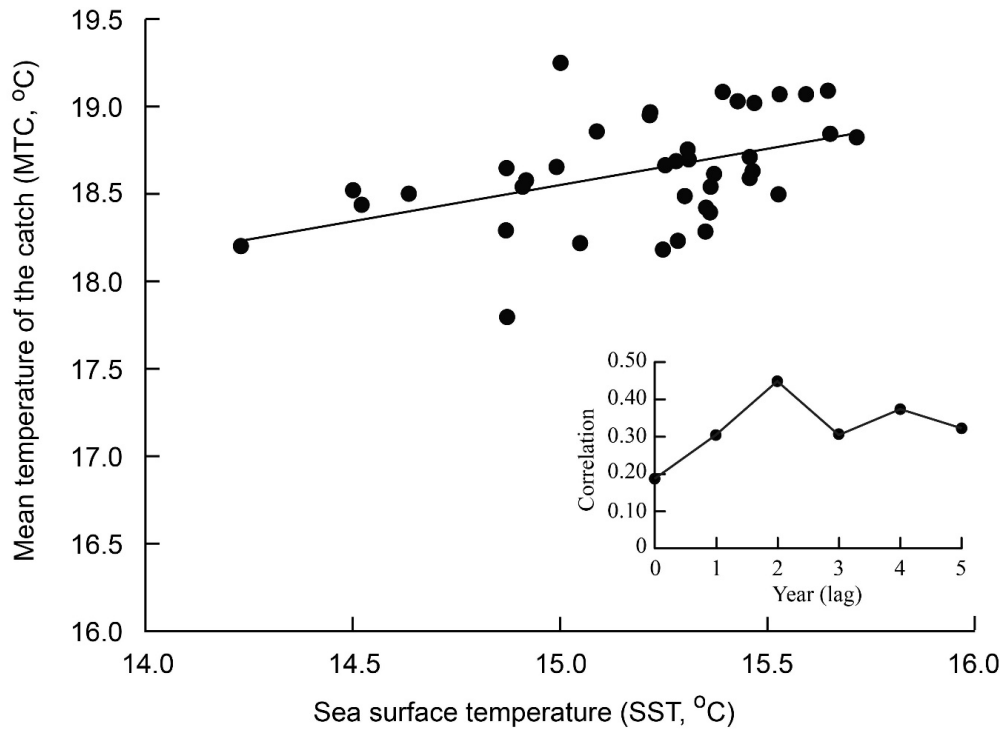


Fig. 3: Correlation ($r = 0.45$; $p < 0.01$) between the mean of SST on 3 points of the Turkish EEZ in the Black Sea and the Mean Temperature of the Catch (MTC) in that same EEZ, lagged 2 years. The insert shows the correlations at lags 0 to 5 years; the regression equation was $MTC = 12 + 0.41(SST, \text{ in } ^\circ\text{Celsius})$ and a lag of 2 years were used to generate the continuous, but fluctuating line in Figure 2D.

Table 1a. List of the fishes includes in the present study and their corresponding trophic level (TL; from FishBase) and temperature preference (TP; from Cheung *et al.*, 2013); n: number of TL estimates available from FishBase. SE: standard error of median TL. When n was < 3 , the average TL was used, and standard deviations (SD) are given. Regions: EM = Eastern Mediterranean; BS = Black Sea.

Taxa	TL	\pm SE	\pm SD	n	TP	Region
<i>Alosa fallax</i>	3.6	-	-	1	15	EM, BS
<i>Argyrosomus regius</i>	4.3	0.75	-	1	19	EM, BS
<i>Atherinidae</i>	3.2	0.20	-	6	15	EM, BS
<i>Auxis</i> spp.	4.3	0.10	-	4	27	EM, BS
<i>Belone belone</i>	4.2	0.10	-	3	15	EM, BS
<i>Boops boops</i>	2.9	-	0.5	2	20	EM, BS

<i>Chelidonichthys lucerna</i>	3.6	0.10	-	3	15	EM, BS
<i>Conger conger</i>	4.3	0.10	-	3	16	EM, BS
<i>Dentex dentex</i>	4.5	-	-	2	19	EM, BS
<i>Dentex gibbosus</i>	4.1	-	-	1	21	EM
<i>Dentex macrophthalmus</i>	3.4	0.20	-	3	23	EM
<i>Dentex maroccanus</i>	3.9	-	-	1	19	EM
<i>Diplodus annularis</i>	3.2	0.10	-	3	13	EM
<i>Diplodus puntazzo</i>	3.0	-	-	1	23	EM
<i>Diplodus sargus</i>	3.0	0.20	-	4	22	EM, BS
<i>Diplodus vulgaris</i>	3.2	0.20	-	4	21	EM, BS
<i>Engraulis encrasicolus</i>	3.4	0.30	-	3	19	EM, BS
<i>Epinephelus aeneus</i>	3.8	-	-	1	27	EM
<i>Epinephelus caninus</i>	4.1	-	-	1	26	EM
<i>Epinephelus costae</i>	3.9	-	-	1	26	EM
<i>Epinephelus marginatus</i>	3.9	0.12	-	3	25	EM
<i>Euthynnus alletteratus</i>	4.5	-	-	1	23	EM,BS
<i>Gaidropsarus mediterraneus</i>	3.6	0.03	-	4	16	EM,BS
<i>Gobius niger</i>	3.3	0.06	-	6	12	EM,BS
<i>Lepidorhombus spp</i>	4.0	0.10	-	6	15	EM
<i>Lichia amia</i>	4.5	-	-	1	26	EM, BS
<i>Lithognathus</i>	3.4	-	0.1	2	24	EM, BS
<i>Lophius piscatorius</i>	4.5	0.04	-	5	14	EM, BS
<i>Merlangius merlangus</i>	4.4	-	0.1	2	11	EM, BS
<i>Merluccius merluccius</i>	4.3	0.13	-	4	18	EM, BS
<i>Micromesistius poutassou</i>	4.0	0.10	-	5	15	EM
Mugilidae (EM) ¹	2.5	0.08	-	10	15	EM
Mugilidae (BS) ²	2.4	0.08	-	11	16	BS
<i>Mullus barbatus</i>	3.2	0.06	-	14	17	EM, BS
<i>Mullus surmuletus</i>	3.4	0.03	-	12	19	EM, BS
<i>Oblada melanura</i>	3.0	-	-	1	24	EM, BS
<i>Pagellus erythrinus</i>	3.4	0.05	-	16	18	EM, BS
<i>Pagrus caeruleostictus</i>	3.8	-	-	1	24	EM
<i>Pagrus pagrus</i>	3.9	0.06	-	7	25	EM
<i>Peristedion cataphractum</i>	3.6	-	-		24	EM
<i>Phycis blennoides</i>	3.6	-	0.1	2	16	EM, BS
<i>Phycis phycis</i>	4.2	0.06	-	5	20	EM
<i>Pomatomus saltatrix</i>	4.5	-	-	1	27	EM, BS
<i>Raja clavata</i>	4.3	-	-	2	17	EM, BS
<i>Sarda sarda</i>	4.5	-	-	1	23	EM, BS
<i>Sardina pilchardus</i>	3.1	0.03	-	3	16	EM, BS
<i>Sarpa salpa</i>	2.3	0.17	-	4	25	EM, BS
<i>Sciaena umbra</i>	3.8	-	-	1	19	EM, BS
<i>Scomber colias</i>	3.6	0.16	-	6	12	EM, BS
<i>Scomber scombrus</i>	3.8	-	0.1	2	12	EM, BS
<i>Scomberesox saurus</i>	3.6	-	-	1	20	EM
<i>Scomberomorus commersoni</i>	4.5	-	-	1	28	EM
<i>Scophthalmus spp</i>	3.9	-	0.2	2	11	BS

<i>Scorpaena porcus</i>	3.9	0.08	-	9	18	EM, BS
<i>Scorpaena scrofa</i>	4.3	0.03	-	4	25	EM
<i>Seriola dumerili</i>	4.3	0.15	-	9	27	EM
<i>Serranus cabrilla</i>	4.3	0.19	-	5	23	EM
<i>Serranus scriba</i>	3.8	0.03	-	4	23	EM, BS
Soleidae & Pleuronectidae ³	3.2	0.04	-	11	14	BS
<i>Sphyræna</i> spp	4.2	-	0.02	2	27	EM, BS
<i>Spicara</i> spp	3.3	0.06	-	5	16	EM, BS
<i>Spondylisoma cantharus</i>	3.3	-	-	1	19	EM, BS
<i>Squalus acanthias</i>	4.5	-	-	1	16	EM, BS
<i>Squatina</i> spp	4.1	0.03	-	3	15	EM, BS
Synodontidae ⁴	4.2	0.20	-	3	27	EM
<i>Thunnus alalunga</i>	4.3	-	-	1	27	EM
<i>Thunnus thynnus</i>	4.4	-	-	1	24	EM
<i>Trachurus mediterraneus</i>	3.6	0.09	-	5	19	EM, BS
<i>Trachurus trachurus</i>	3.7	0.10	-	4	18	EM, BS
<i>Trigla lyra</i>	3.5	0.07	-	4	24	EM, BS
<i>Umbrina cirrosa</i>	3.5	-	-	1	15	EM, BS
<i>Xiphias gladius</i>	4.5	-	-	2	26	EM, BS
<i>Zeus faber</i>	4.5	-	-	1	17	EM, BS

- 1) Mugilidae (EM): *Mugil cephalus*, *Chelon labrosus*, *L. aurata*, *L. saliens*;
2) Mugilidae (BS): *Mugil cephalus*, *Chelon labrosus*, *Liza aurata*, *L. saliens* *L. haematocheli*;
3) Soleidae & Pleuronectidae: *Solea solea*, *Platichthys flesus*;
4) Synodontidae: *Synodus saurus*, *Saurida undosquamis*.

Table 1b. List of the invertebrates included in the present study, their trophic level (TL; from SeaLifeBase) and temperature preference (TP; from Cheung *et al.*, 2013) by region (EM = Eastern Mediterranean; BS = Black Sea).

Species	TL	TP	Region
<i>Callinectes sapidus</i>	3.5	25	EM
<i>Cancer pagurus</i>	2.6	14	EM, BS
<i>Chamelea gallina</i>	2.1	14	BS
<i>Homarus gammarus</i>	2.6	14	EM
<i>Loligo vulgaris</i>	4.1	18	EM
<i>Melicertus kerathurus</i>	2.0	27	EM
<i>Metapenaeus monoceros</i>	2.0	27	EM
<i>Mytilus galloprovincialis</i>	2.5	17	BS
<i>Nephrops norvegicus</i>	2.2	17	EM
<i>Parapenaeus longirostris</i>	2.7	25	EM
<i>Penaeus monodon</i>	2.7	26	EM
<i>Penaeus semisulcatus</i>	2.7	27	EM
<i>Portunus pelagicus</i>	2.0	27	EM
<i>Sepia officinalis</i>	3.6	19	EM
<i>Squilla mantis</i>	2.7	22	EM