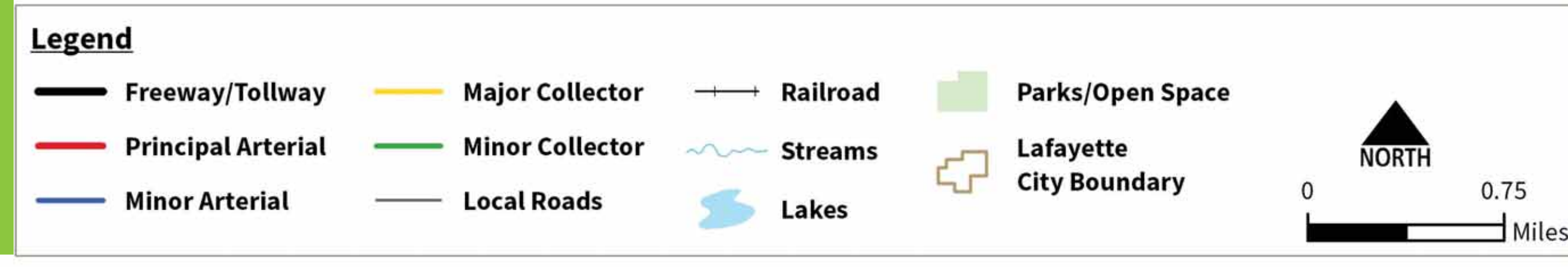
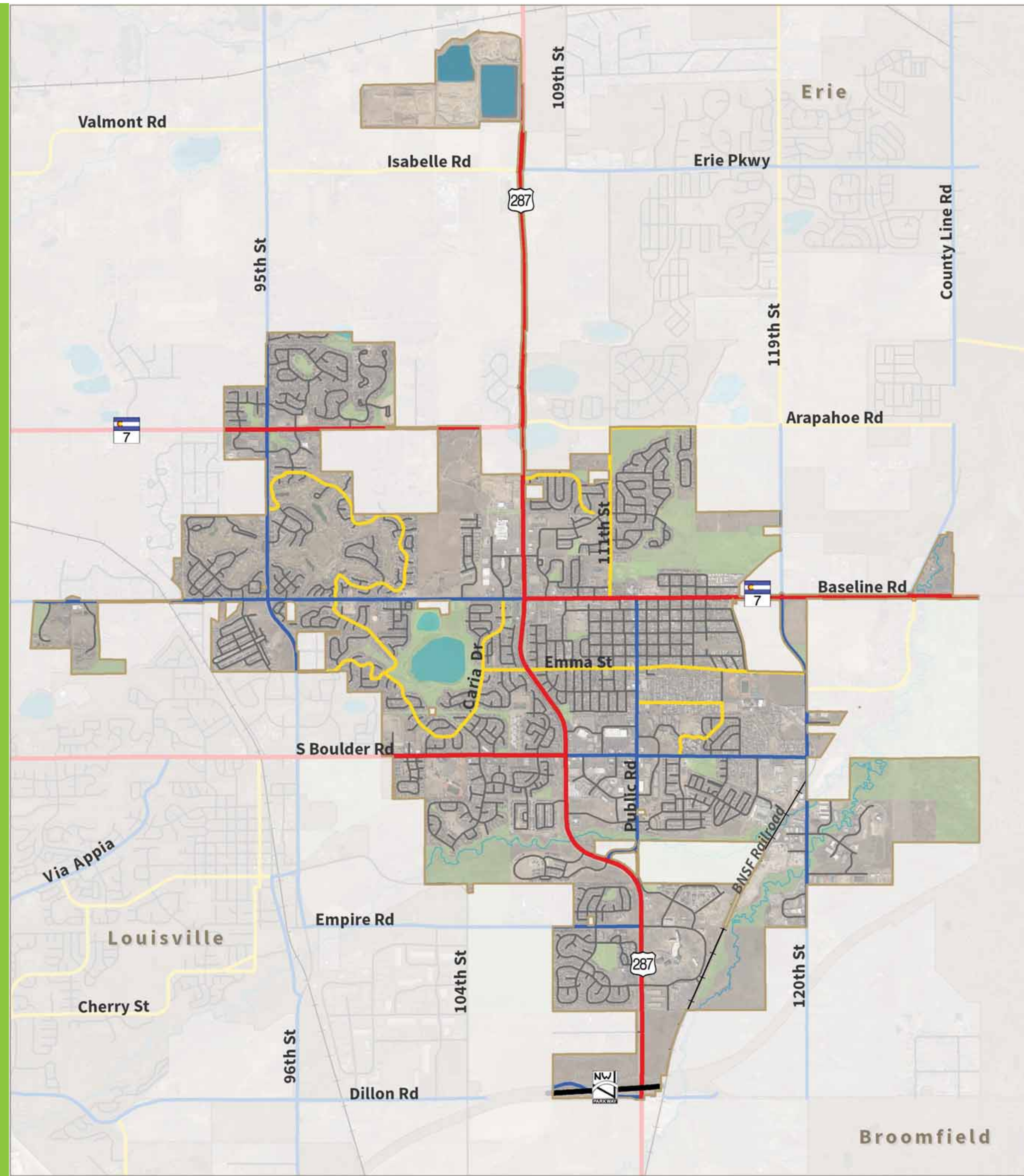


# Transportation

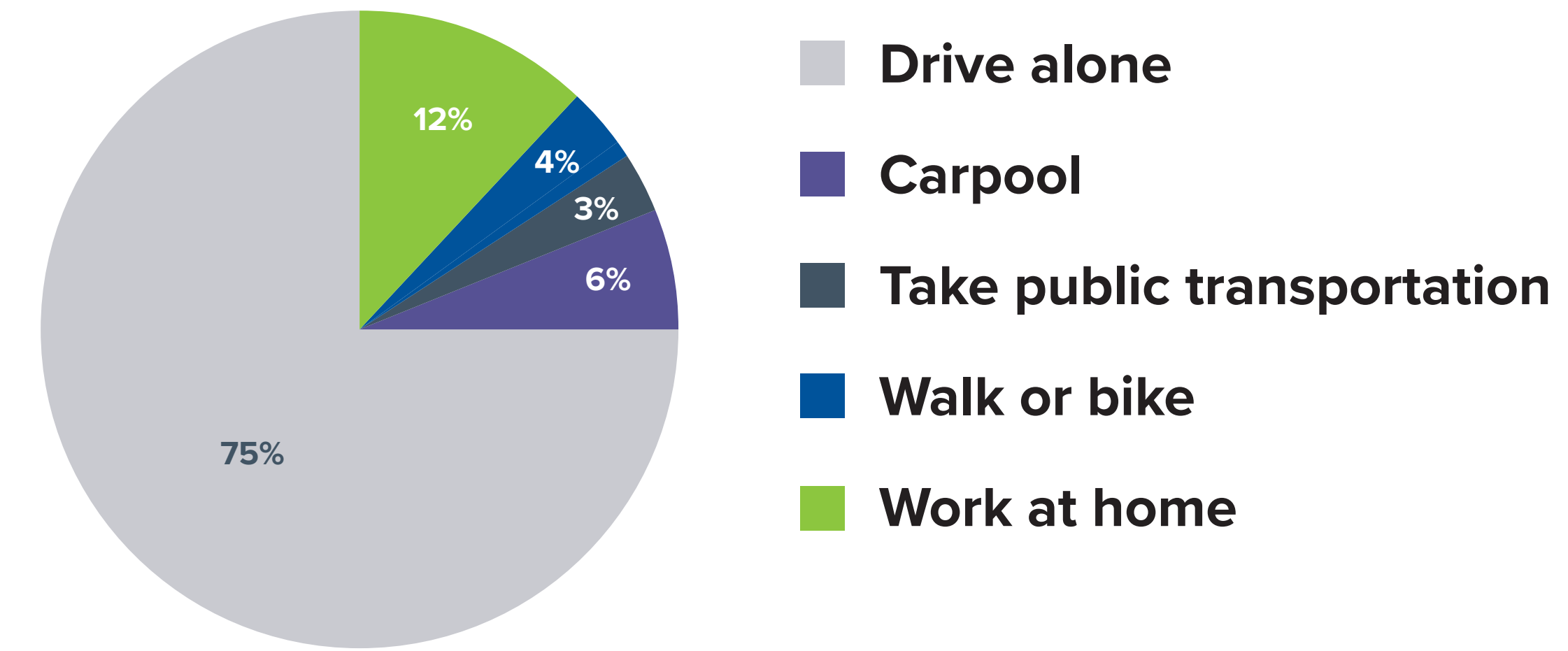
## ROADWAY TYPES



## MEANS of TRANSPORTATION to WORK

### TAKEAWAY:

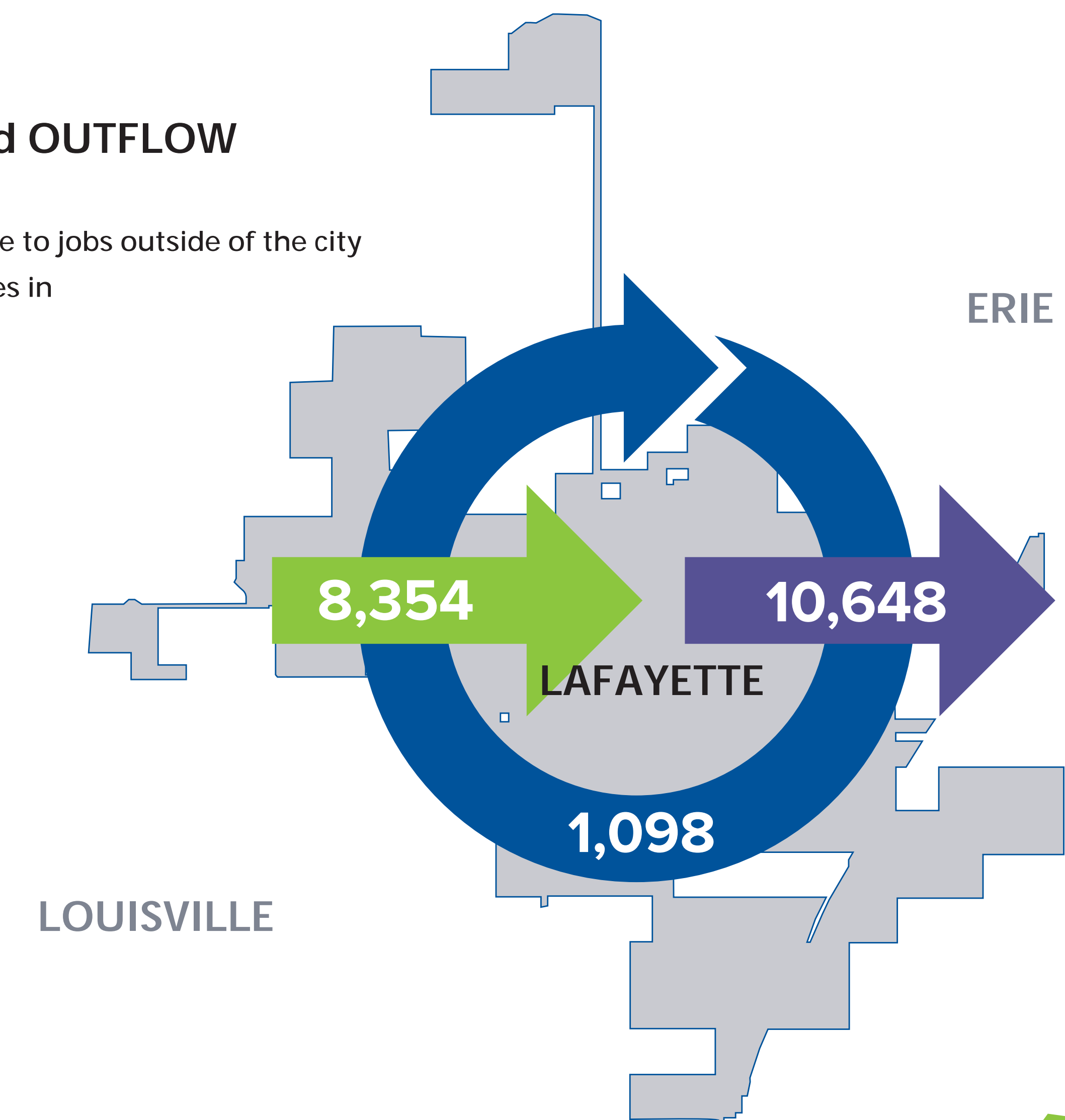
On a typical day, travel by automobile remains the predominant means of travel to work for Lafayette residents.



## EMPLOYMENT INFLOW and OUTFLOW

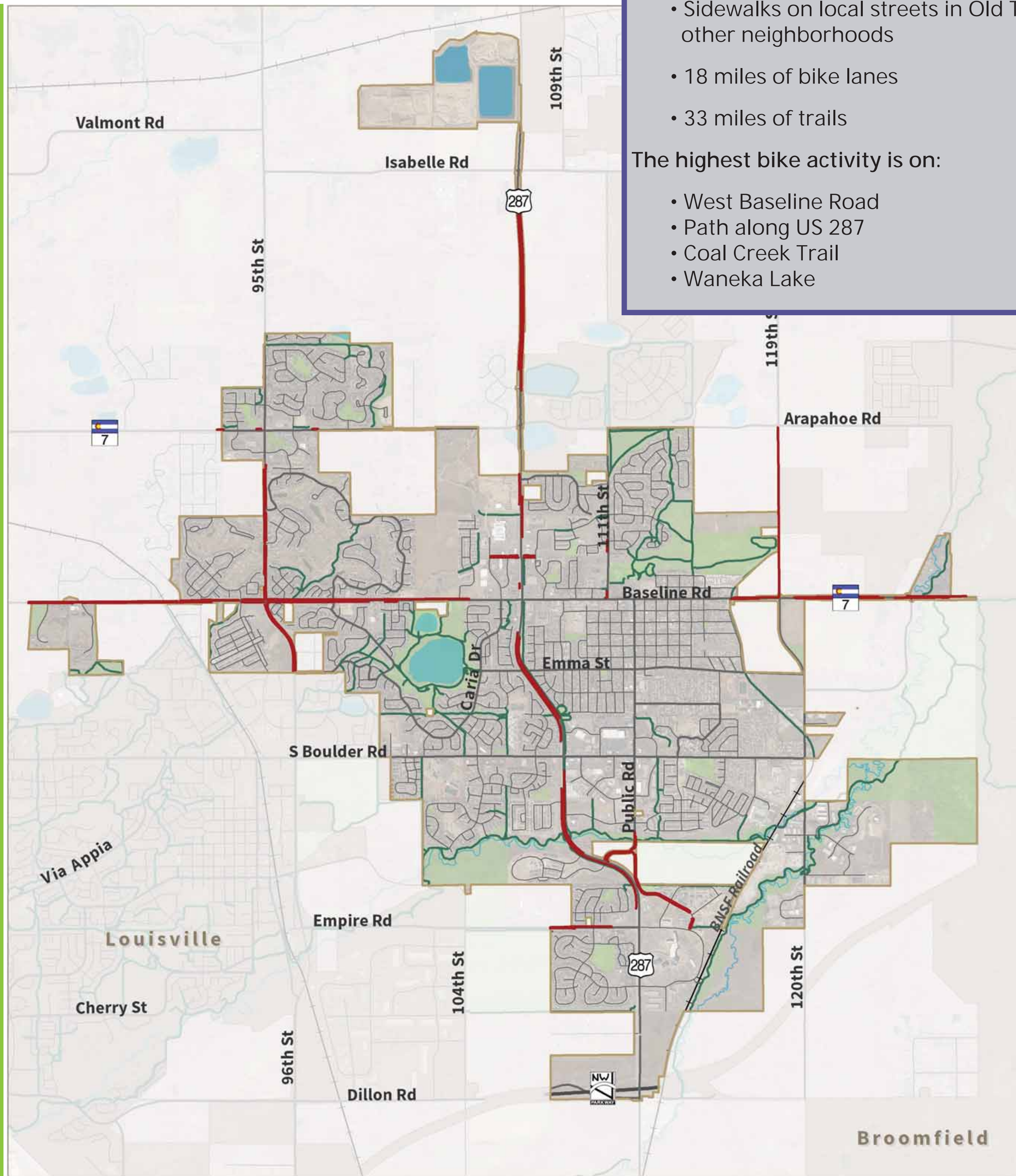
### TAKEAWAY:

- 90% of Lafayette residents commute to jobs outside of the city
- 88% of the City's workforce commutes in



# Transportation

## BIKING and WALKING FACILITIES

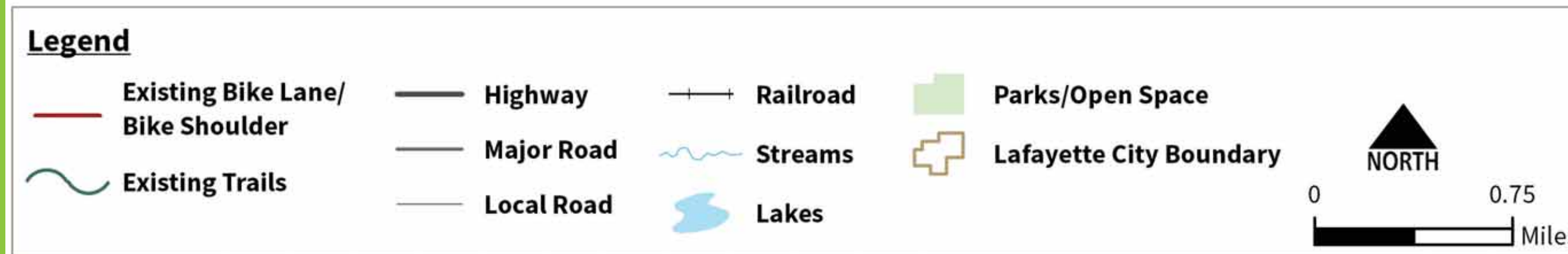


**TAKEAWAYS:**  
 The City's system of sidewalks, bike facilities, and trails include:

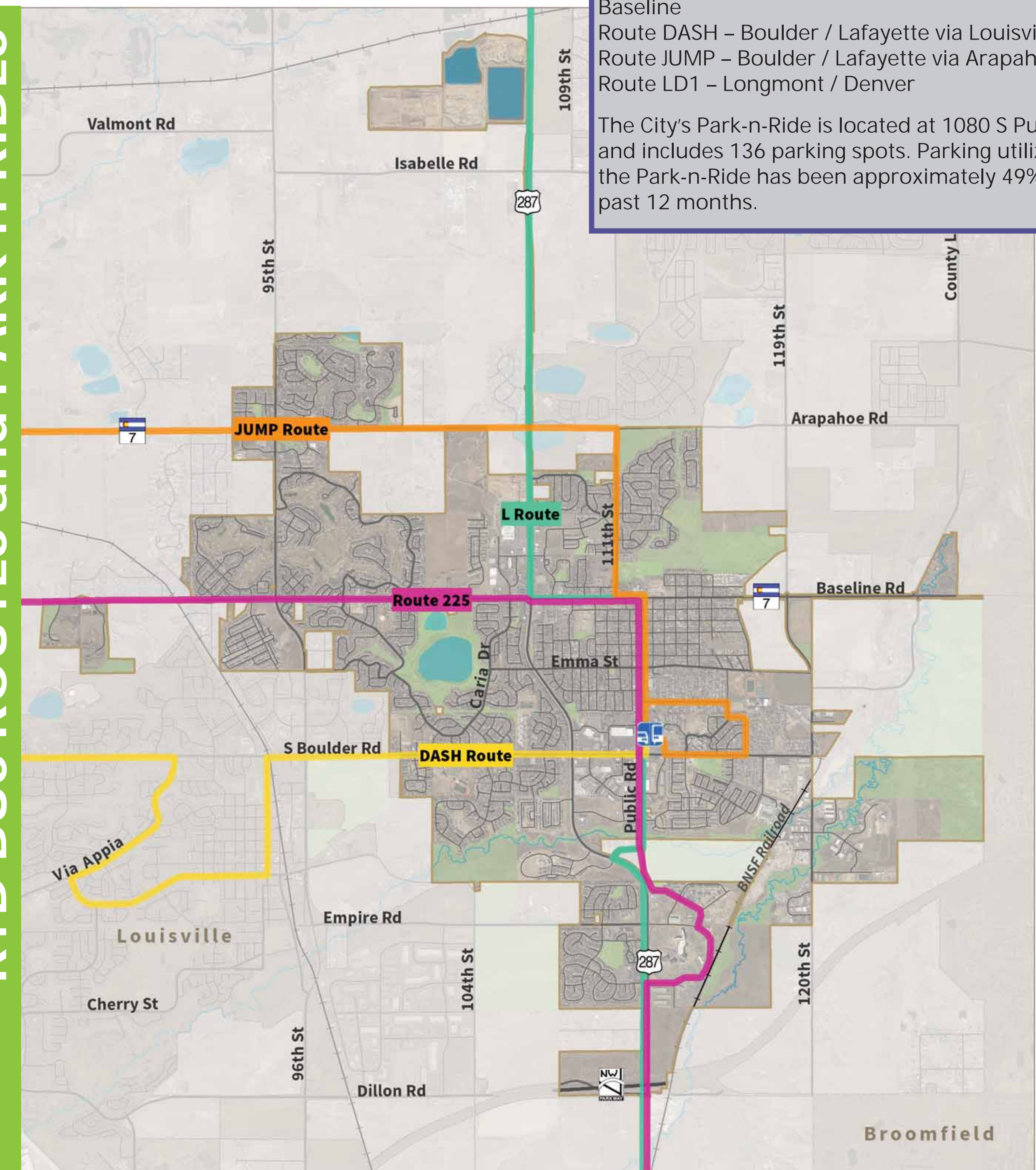
- Sidewalks on local streets in Old Town, other neighborhoods
- 18 miles of bike lanes
- 33 miles of trails

The highest bike activity is on:

- West Baseline Road
- Path along US 287
- Coal Creek Trail
- Waneka Lake



## RTD BUS ROUTES and PARK-n-RIDES



**TAKEAWAYS:**  
 RTD offers the following routes serving Lafayette:

- Route 225, 225D, 225T – Boulder / Lafayette via Baseline
- Route DASH – Boulder / Lafayette via Louisville
- Route JUMP – Boulder / Lafayette via Arapahoe
- Route LD1 – Longmont / Denver

The City's Park-n-Ride is located at 1080 S Public Road and includes 136 parking spots. Parking utilization at the Park-n-Ride has been approximately 49% in the past 12 months.

