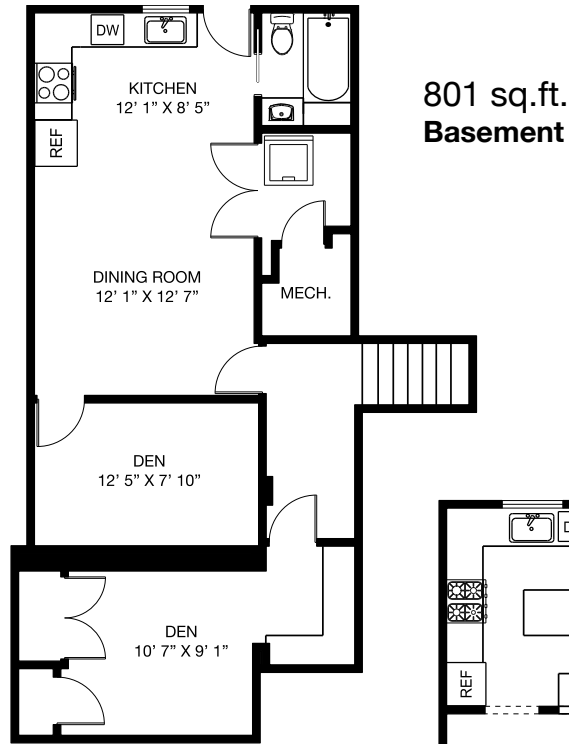
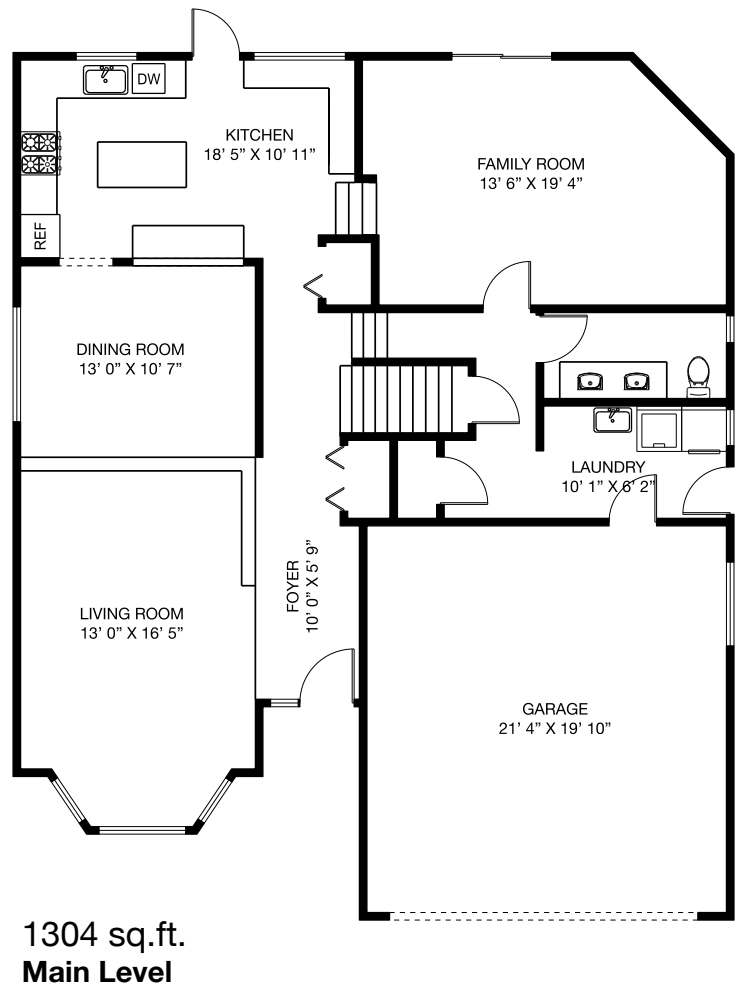
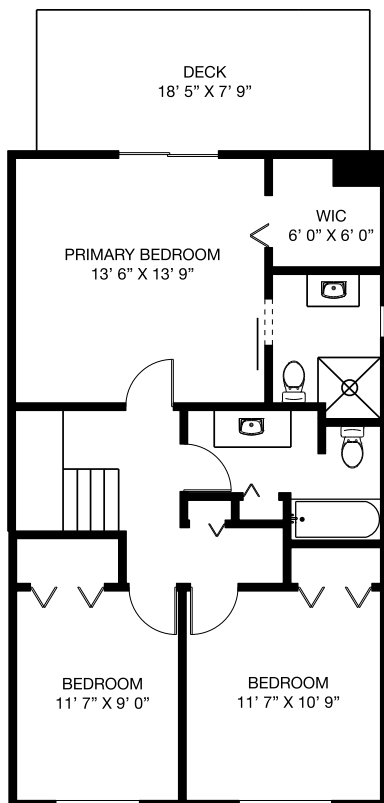


2115 London Street
New Westminster, BC

Total Finished: 2867 sq.ft.
Deck: 144 sq.ft.
Garage: 443 sq.ft.



762 sq.ft. Upper Level



Measurements and floor plan are approximate and are to be used for advertising purposes only. Not suitable for construction or architectural use. Square footage calculated using ANSI Z765 method.

March 2026

Lucca.
REAL ESTATE MARKETING