

AFS Management Committee Call

March 17, 2015

1:00 pm EDT

Minutes

Participants:

MC Members: Donna Parrish, Ron Essig, Joe Margraf, Steve McMullin, Robert Hughes, Kristen Ferry, Vince Travnichek, Dave Coughlan, Jesse Trushenski, Laura Wildman, Jessica Mistak

AFS staff: Doug Austen, Shawn Johnston, Denise Spencer, Eva Przygodski, Aaron Lerner, Tom Bigford, Beth Beard, Jasmine Sewell

Emerging Leaders: Cari-Ann Hayer

MC members not present: Mark Porath, Hilda Sexauer, Margaret Murphy

Meeting called to order by President Parrish at 1:02 p.m. EDT

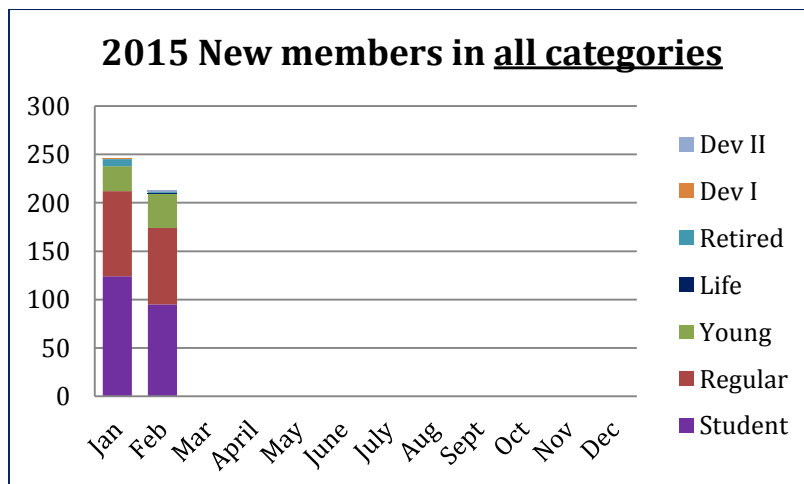
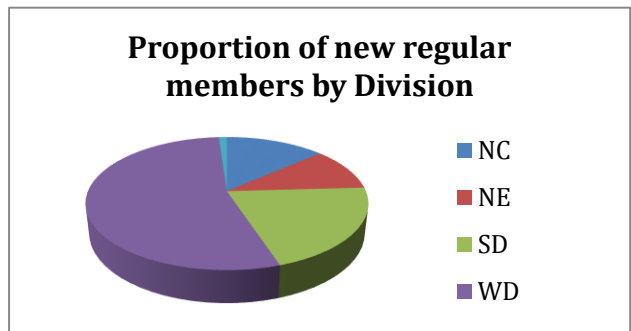
1. Approve agenda (Parrish) – Motion by Hughes; approved by acclamation.
2. Approval of minutes from 17 February call (Parrish) – Motion by Essig; 2nd by Trushenski; approved by consent.
3. University of Minnesota-Mankato Student Subunit Bylaws (Mistak) - Motion Hughes, Coughlan 2nd; approved by consent.
4. Executive Director Report (Austen) –
 - a. Question from Hughes on International Membership rate – Eva researched a few other society rates and those that used same rate were only for electronic journals. Would need to create a new membership type that is international, electronic only. Would take a Society vote to change. 54 foreign members get online only; 150 foreign members get print version of Fisheries. Developing countries are 30 members.
 - b. Austen will develop concept paper.
5. President's report (Parrish) -
 - a. Portland meeting – 2,100 abstracts submitted; projection of 3,600 – 3,800 attendees or so at meeting. Suggest making hotel reservations ASAP.
 - b. MC meeting – Friday afternoon, August 14.
 - c. GB meeting and retreat - Saturday, August 15.
 - d. Business meeting on Wed., August 19; incoming breakfast on Thursday, August 20
 - e. Directions on various meetings, etc., will sent to GB in June by Denise.
 - f. Those GB members who are moving off of GB should attend all events other than the Incoming GB breakfast.
 - g. Need to get accurate list of 2015-2016 GB to ensure that we contact the correct

members. Changes to GB membership should be sent to Jasmine Sewell (jsewell@fisheries.org).

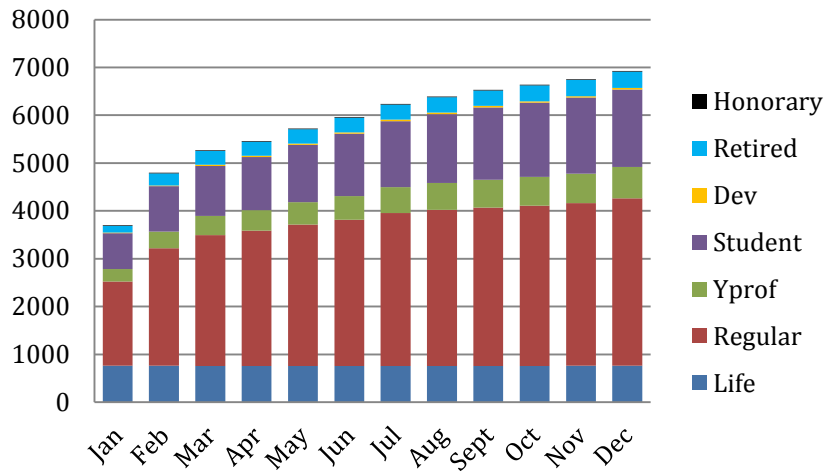
- h. Stress importance of Incoming GB attending the Sunday morning leadership training session.
 - i. Award nominations due by April 1. Please submit names of deserving members for awards! Add specific notification of this deadline and request for nominations in future bi-weekly e-newsletter (Sarah Gilbert-Fox) and AFS social media (Beth Beard).
6. Report--Education Committee (McMullin) – Committee has met and is moving forward but Steve will need to focus on finalizing the manuscript for submission.
 7. Procedure Manual Revision (Hughes) – notes of recommended changes have been included in a edited version of the AFS Procedures Manual.
 8. New business - none
 9. Adjourned by consent at 2:33 p.m. EDT

2015 Regular (only) Membership Promotion Results

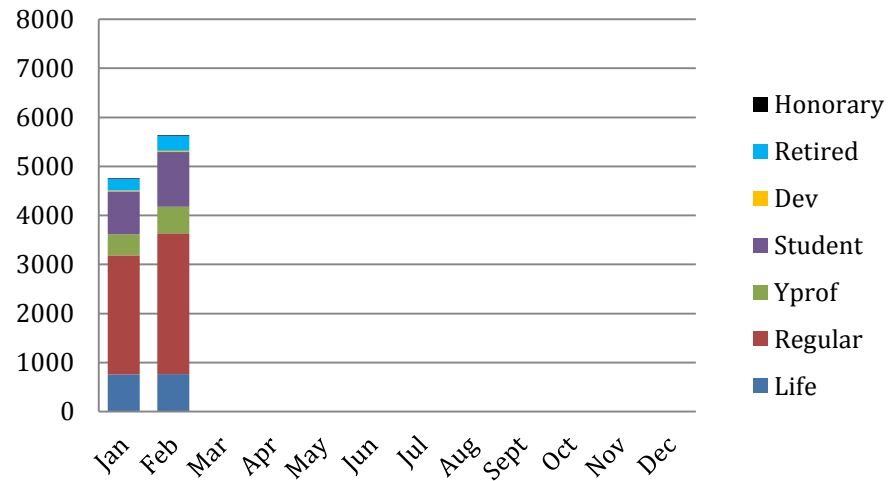
NC	37
NE	29
SD	57
WD	148
<u>No Division</u>	<u>3</u>
Total	274



2014 total members by type



2015 total members by type



	Life	Regular	Yprof	Student	Dev	Retired	Totals
Jan	763	1763	257	753	15	135	3699
Feb	763	2458	345	949	17	253	4798
Mar	760	2737	399	1045	22	289	5265
Apr	760	2828	431	1108	24	296	5460
May	760	2956	465	1198	27	306	5725
Jun	760	3054	495	1306	29	309	5966
Jul	759	3196	540	1384	29	317	6239
Aug	760	3260	564	1442	30	322	6392
Sept	761	3310	584	1510	31	325	6535
Oct	761	3348	604	1549	31	330	6637
Nov	762	3400	619	1588	32	335	6750
Dec	763	3500	654	1620	32	344	6927

	Life	Regular	Yprof	Student	Dev	Retired	Totals
Jan	762	2424	429	876	19	237	4761
Feb	765	2873	538	1120	24	307	5641
Mar							0
Apr							0
May							0
Jun							0
Jul							0
Aug							0
Sept							0
Oct							0
Nov							0
Dec							0