



***Mast 3G
Software Installation
Manual:***

Installation and Operation Manual

For use with the following parts:

Mast Motorsports: M-90 3G ECM Software

***It is advised to read this Installation Manual THOROUGHLY before
proceeding with installation!!!***

NOTE: You will need an ECM password to log in to the software. You can receive this from Mast by emailing password@mastmotorsports.com. You will receive your password the same day if emailed before 5pm CST or the next business day during the weekend or after hours.

Software Installation

Using your Internet browser go to <http://www.mastmotorsports.com>. Then go to the Customer Education Center Tab and click on Software Downloads. On the software downloads page you will see a few links, select Mast M-90 3G Software. To download the M90 Software simply click the link. You should have a box pop up that asks where you want to save the file. Choose the location and click save.

After download is complete click open folder. You should see all of the files in your desktop. Right click on the Mast_M-90_ECM_Software folder and select Extract All then Extract on the window that pops up.

You should now see a folder that contains the files below in Figure 14.2. Click on the mast_gcp_distribution_121307 folder and then click on Mast Display. A window should pop up with a security warning, select Run.

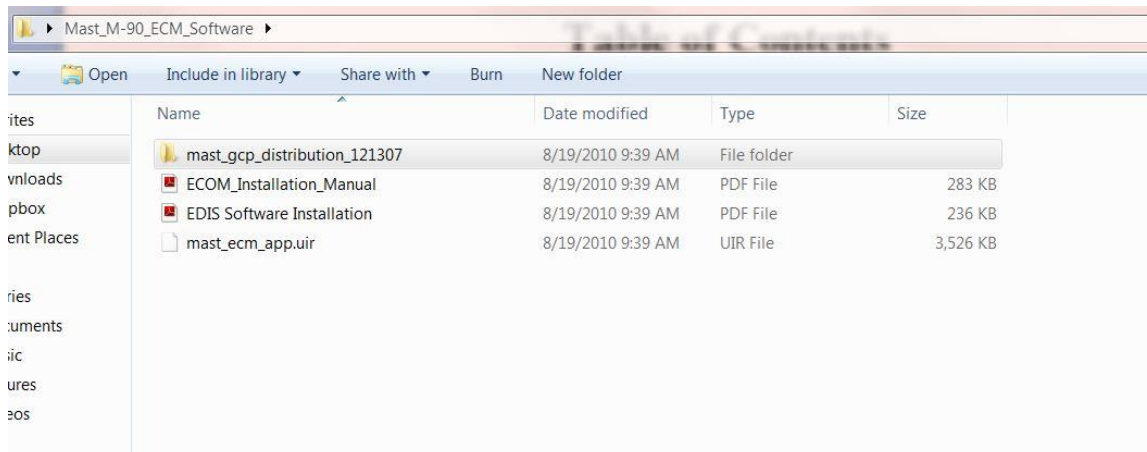


Figure 14.2, Mast M90 Software Folder

1. Follow the instructions for installation in **Error! Reference source not found.** through **Error! Reference source not found.**

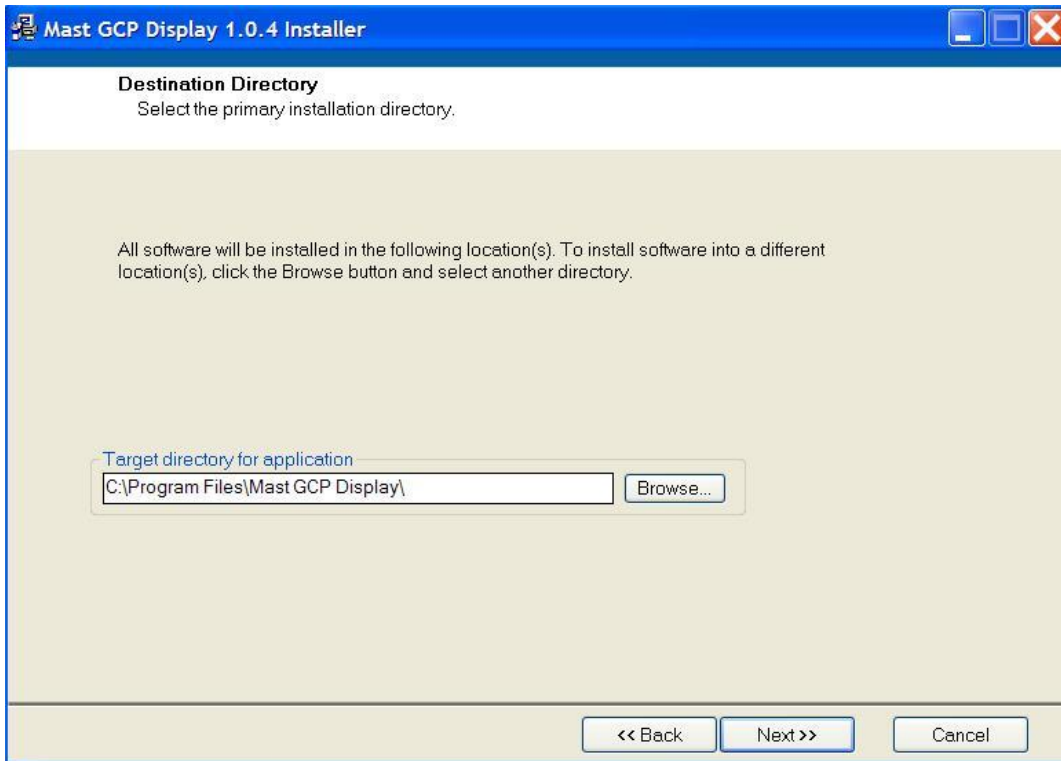


Figure 1: Installation Directory

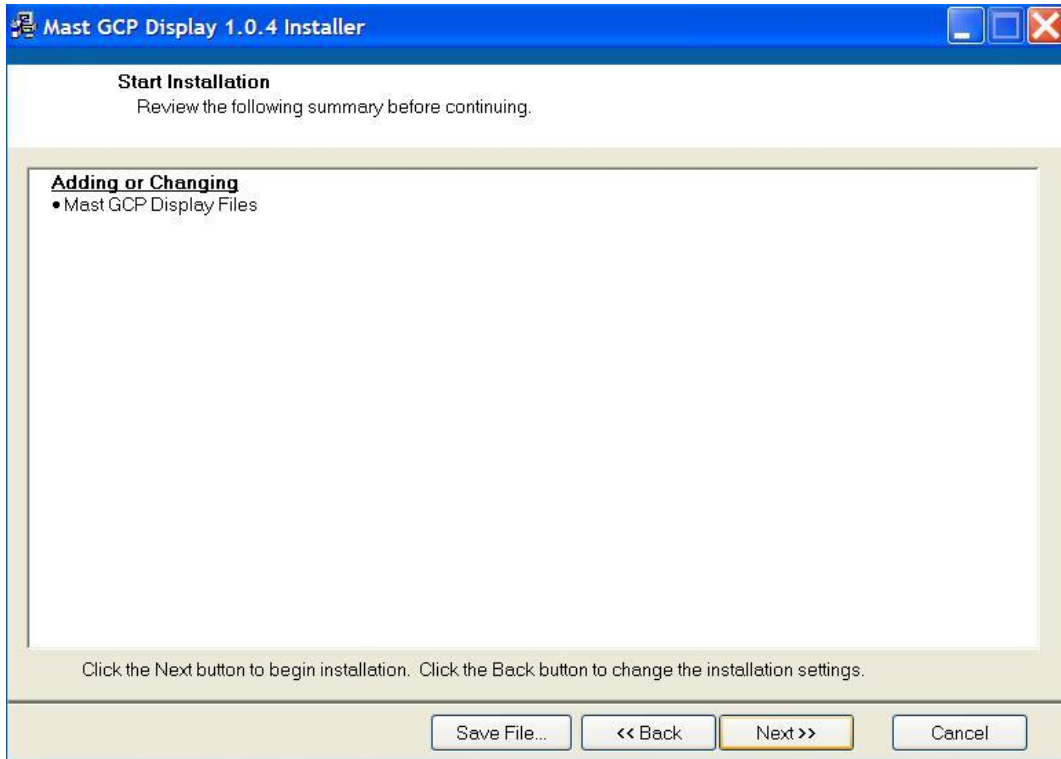


Figure 2: Start Installation

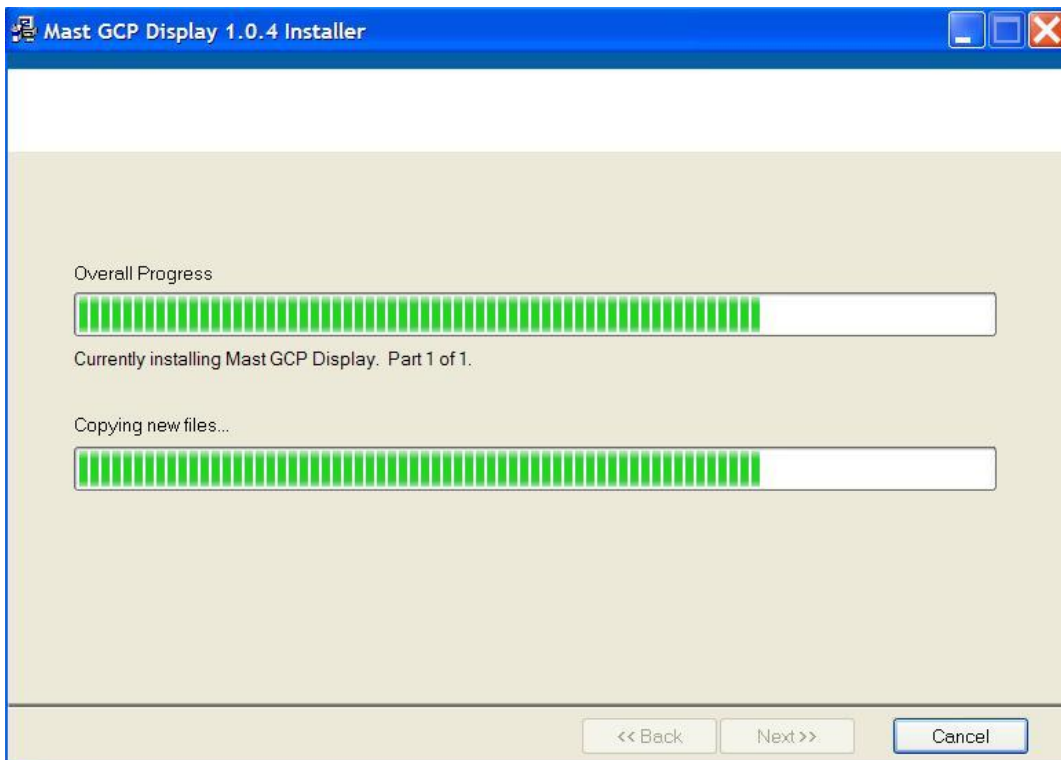


Figure 3: Installation Progress

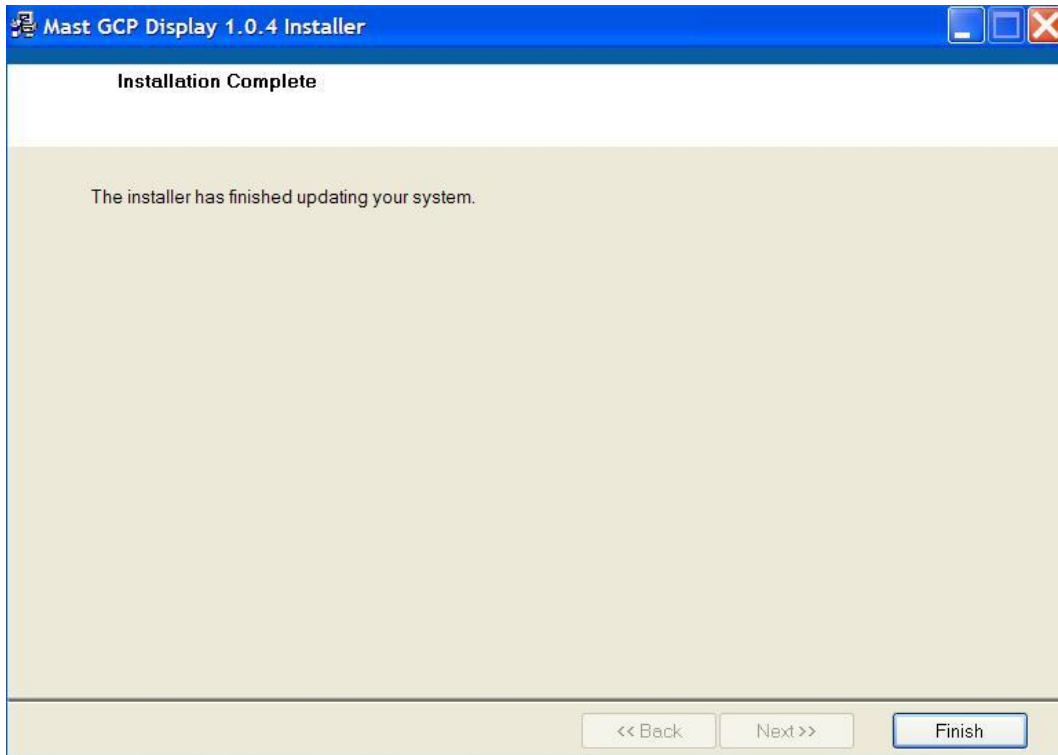


Figure 4: Installation Complete

NOTE: Once installation has been completed the installation files may be permanently deleted if desired.

NOTE: If there is a previous version of the software already installed, the uninstaller will remove the previous version and then exit. You will need to start the installer again in order to install the new version.

3. Once installed, you must restart your computer.

4. After your computer reboots an additional file must be copied and paste into the C:\Mast_Dis folder directory. The file named mast_ecm_app.uir is located in the Mast_M-90_ECM_Software folder that we installed on the desktop.(Figure 14.3 below) Copy and paste this file into the C:\Mast_Dis folder directory and click yes to replace. (Figure 14.4 below)

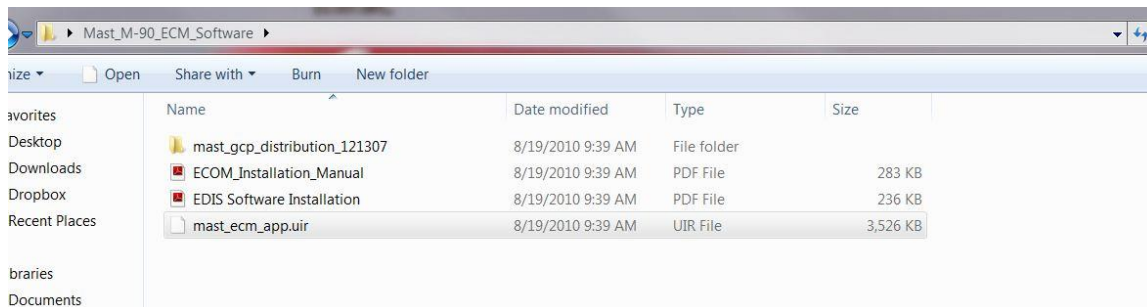


Figure 14.3 mast_ecm_app.uir

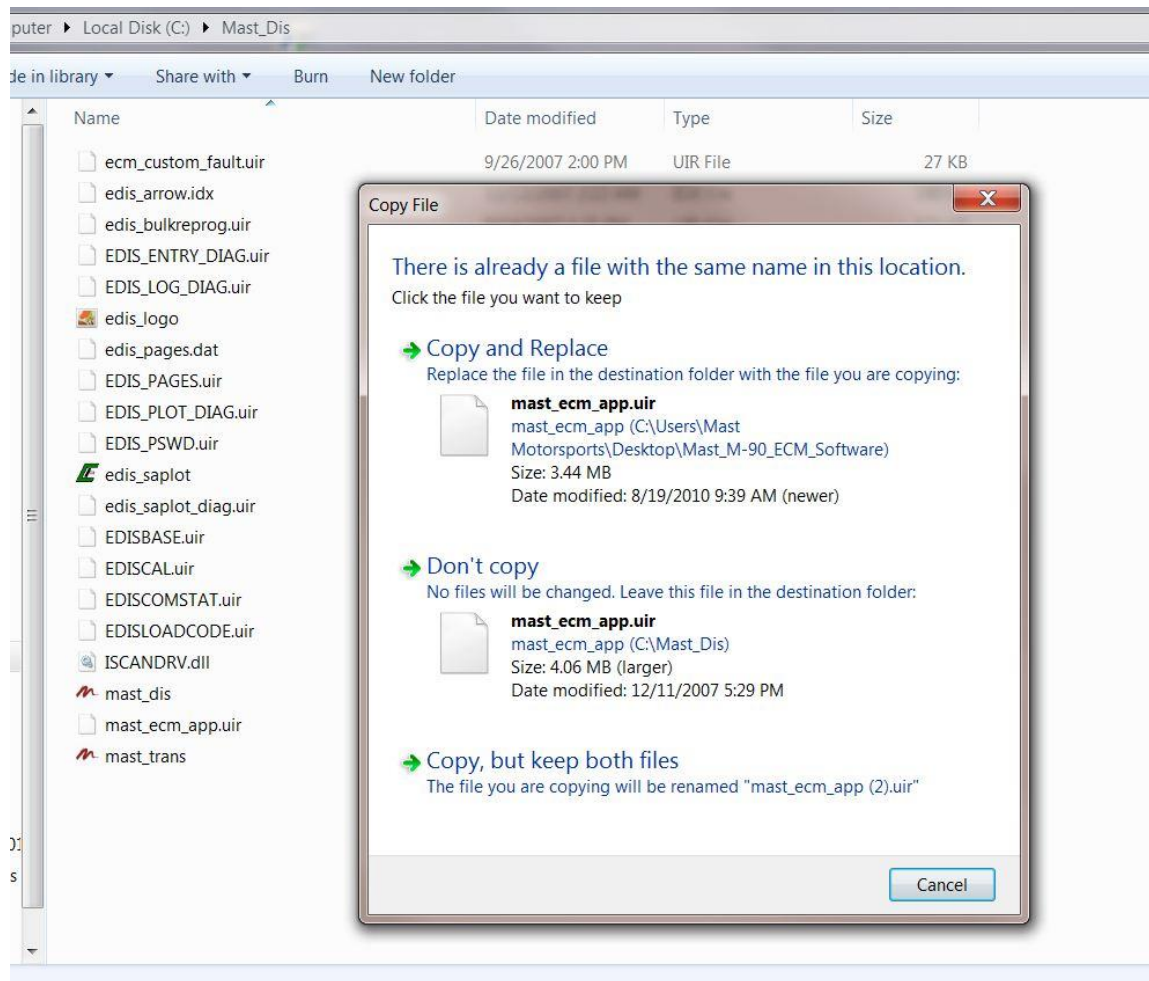


Figure 14.4 Copy and Replace File

5. Once installed, the software can be accessed from *Start Menu* → *Programs* → *Mast GCP Display* → *Mast GCP Display*