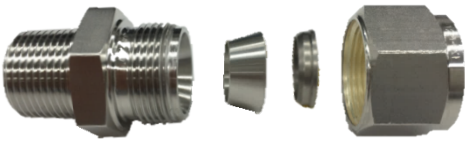


Don't you have troubles In Mold cooling piping ?

Common

Double ferrule
fitting



Under heat cycle at 700°C

- Tightening by intuition
- A little leak : Re-tightening
- Detaching : Approx. 8 times
⇒ Replace fitting/pipe



IHARA

**Dacchaku-kun for high
temperature**



- Install gasket and tighten, that it
- No leak ⇒ No retightening
- Detaching : more than 30 times
⇒ Less replacing fitting/pipe

**Ihara Dacchaku-kun for High temperature
is for high temp/multi detaching piping !**

Less leak trouble + Less Maintenance

