

## Stainless Steel Fitting for Plastic Tubing & Hose

Ihara Science's patented design eliminates any damage to tubing & hose due to the innovative stainless steel nut assembly. Unlike conventional fittings, Ep-Fit can be removed and reconnected over and over without damage

to the tubing. Ep-Fit is available in bulkhead unions, adjustable elbows, bulkhead female connectors, o-ring seal straight thread connectors, and ball valves. It is ideal for new and replacement markets.

## SPECIFICATION



<b>Fluid</b>	Clean Air/N <sub>2</sub> Gas, Pure Water, Chemical Liquids, etc. (according to tube specification)
<b>Maximum Working Pressure</b>	220 psi *
<b>Temperature</b>	-50°F~120°F *

\* The rating differs much by the fluid or the specification of tube.

## FEATURES & ADVANTAGES OF EP-FIT VS. DOUBLE FERRULE TYPE

### Simple

- Simple Structure ( body & nut assembly )

### Easy · Exact · Safe

- Exact & safe assembly
  - No excessive fastening
  - No damage to tubes
  - Minimal tube-twist in fastening process
  - High sealing performance
  - High corrosion resistance ( all in 316SS )

### Clean

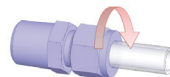
- Oil-free product cleaned by ultra pure water, packed in a clean-room option available.

### CONVENTIONAL DOUBLE FERRULE TYPE

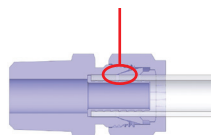
#### 5 PARTS



#### TURN ONE ROTATION

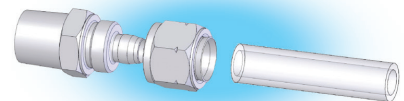


#### POSSIBILITY OF DAMAGE TO TUBING

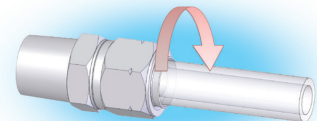


### ➔ Ep-Fit

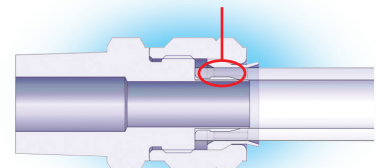
#### ONLY 2 PARTS



#### TURN UNTIL CONTACT WITH BODY



#### NO DAMAGE TO TUBING



## APPLICABLE TUBE

### Fluoro Polymer Tube ( PTFE • PFA • FEP ) Polyurethane Tube / Nylon Tube

Size (O.D. x I.D.)

mm	inch
4 x 2	6.35 x 3.18 (0.25" x 0.125")
4 x 2.5	6.35 x 3.96 (0.25" x 0.156")
6 x 4	6.35 x 4.35 (0.25" x 0.171")
8 x 5	9.53 x 7.52 (0.375" x 0.296")
8 x 6	9.53 x 6.99 (0.375" x 0.275")
10 x 6.5	12.7 x 9.52 (0.5" x 0.375")
10 x 8	19.05 x 15.88 (0.75" x 0.625")
12 x 8	
12 x 9	
12 x 10	
16 x 13	
16 x 14	
18 x 12	
19 x 16	

Please ask our Sales Dept. for the other sizes.

## HOW TO ORDER

EP   CT   4 X 2.5   —   4  
 ①   ②   ③   ④

① Type	② Shape/Style	③ Applied Tube Size	④ Thread Size	
Ep-Fit : 『EP』	CT : Male Connector SA : Female Connector LN : Male Elbow And More	Select from applicable tube size above	Nominal	Size
			※ 4	1/4
			※ 6	3/8
			※ 8	1/2
			※ 12	3/4
			※ 16	1

Please confirm the fluid and the specification of the tube before procurement.

※ Blank : NPT  
 R : BSPT  
 G : BSPP

## WIDE VARIETY OF APPLICATIONS



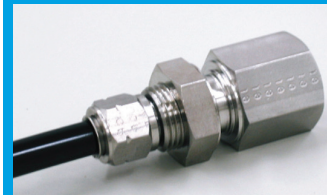
Ball Valve: Stainless Steel Tube x Plastic Tube



Bulkhead Union



Adjustable Elbow

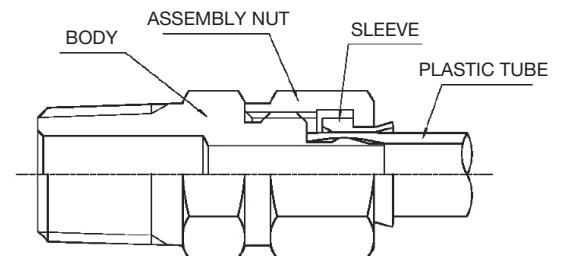


Bulkhead Female Connector



O-Ring Seal  
Straight Thread Connector

## CONFIGURATION



## IHARA SCIENCE USA CORPORATION

1915 Peters Road, Suite 103, Irving, Texas 75061 USA

Tel: 469-586-4671 Fax: 469-586-4723

[www.lharaScience.com](http://www.lharaScience.com)



**IHARA  
SCIENCE**

Innovative and Customizable Piping Solutions