

SCHOOL OF ART Galleries



School of Art Gallery

School of Art Building
Kent State University
Kent, Ohio

The DigitalHand

curated by Kathleen Browne

February 11– 28, 2014

reception: February 13, 5–7PM

visiting artist lecture:

Melissa Cameron, February 14,
12 PM, SoA room 202

Featuring

Pam Argentieri • Kristin Beeler • Allyson Bone
Doug Bucci • Melissa Cameron • David Choi
Joshua DeMonte • Arthur Hash • Matthew Hollern
Nicole Jacquard • Amy Klainer
Plural Studios-Courtney Starrett & Michael Gayk
Phil Renato • Rebecca Strzelec • Kim Tatalick
Jess Todd • Linda Threadgill



Melissa Cameron

Fulsome Bloom Pendant

Sandblasted + heat coloured
stainless steel, 925 silver chain
80mm x 80 mm x 40 mm on a
600mm chain, 2012



Ohio Arts Council

'13
'14

KENT STATE
UNIVERSITY

Excellence in Action

galleries.kent.edu



The DigitalHand

curated by Kathleen Browne

February 11– 28, 2014



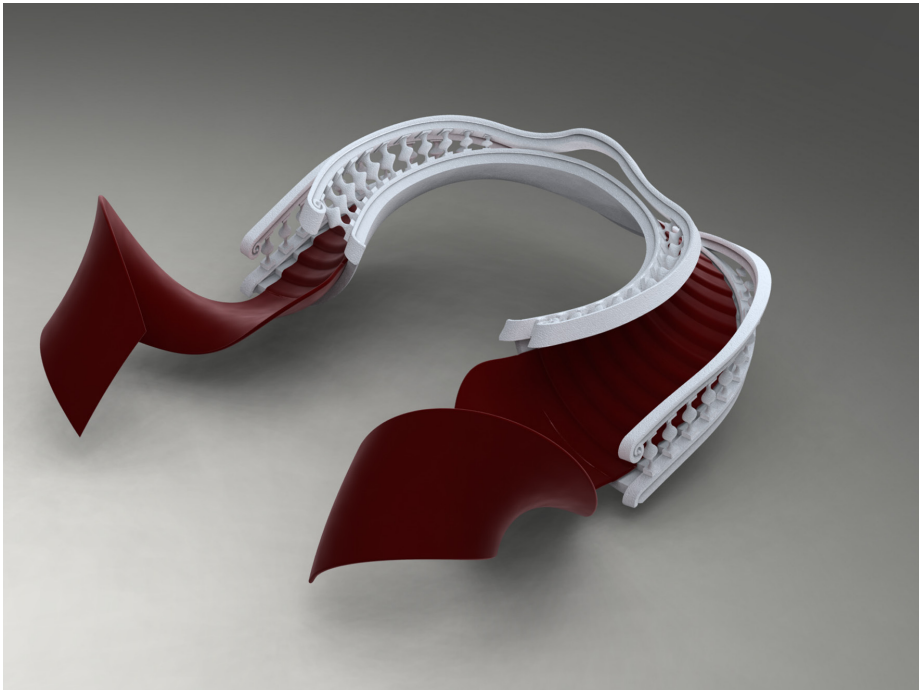
Amy Klainer
Safety Chain (Traffic Orange, Signal Blue,
Mainline Green)
Laser-cut Wool Felt, Found Chain,
Fabricated Chain, 1'x3', 2010



Arthur Hash
Brooch
Sterling silver, copper, laser etched enamel
and stainless steel, 2011

This exhibition is a survey of the work of 18 metalsmiths who have integrated digital technologies into their art practice. These artists' engagement in digital technologies covers a broad spectrum, from using computer programs solely as a design tool to fabricating works of art using laser cutting and 3D printing. - Kathleen Browne, February 2014.

School of Art
Gallery



Joshua Demonte
Staircase Collar
 33% glass-filled polyamide, flocking
 12" x 16" x 7", 2009



Kristin Beeler
Tasting Spoon
 Sterling, laser engraved
 mother of pearl, ink, coral
 2014



Allyson Bone

Leaf

Made in rhino, printed in wax, and then cast in silver, 2012



Pam Argentieri

Tapestry Cuff

Copper, enamel, gold foil, SLS nylon

2 ¼" x 3 ½" x 3 ½"

Copper die form, kiln fired enamel, CAD print, 2011



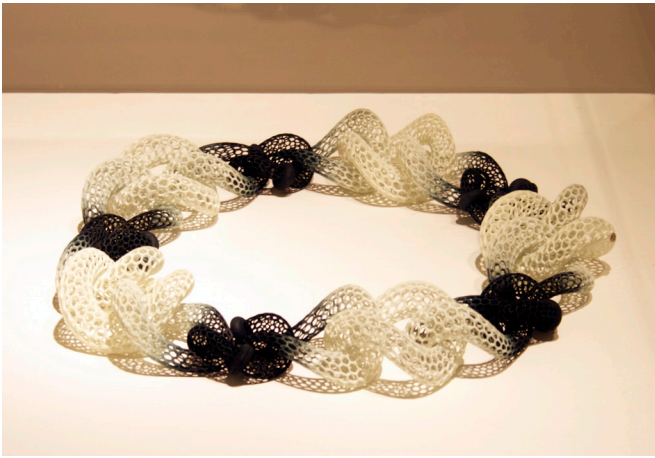
David Choi
Knotted #02
 Steel, Silver
 1.5" x 3" x .75", 2013



Matthew Hollern
Ellipsoid
 (SLS) Nylon, Synthetic Rubies
 4 x 4 x 1 (inches) (base = 8w x 8d x 1h)
 2013



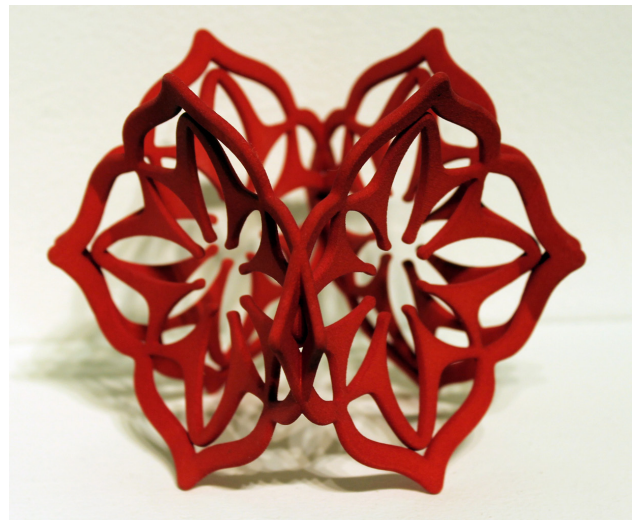
Nicole Jacquard
Souvenirs II
 Galvanized steel, porcelain, felt, nylon cord
 2013



Doug Bucci

Islet | Black Sectional

Neckpiece, Glass filled nylon & Sterling Silver
printed as one interlocked piece
18 x 18 x 1.5 inches, 2011



Plural Studios-Courtney Starrett and Michael Gayk
Loti

Selective Laser Sintered Nylon
2011



Rebecca Strzelec

Spheres and Spools 8, Neckpiece

ABS plastic, fused depositions modeled, raffia, elastic, 2012



Kim Tatalick
NEOclassic Necklace
 ABS plastic
 22" x 22" x 3"
 2006



Linda Threadgill
Rosette Brooch 4-13
 copper, brass, polymer clay
 4" x 4" x 1 1/2"
 2013



Phil Renato
Suckle
 ABS, polyurethane,
 found silicone
 22x12x16 cm
 2007

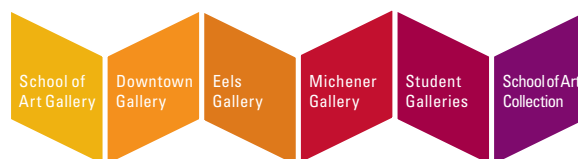
SCHOOL OF ART Galleries



Jess Todd
From the **"Suburban Growth Series"**
cast silicone rubber, 24"x16"
2014

School of Art Gallery
School of Art
400 Janik Drive
Kent, Ohio
330.672.1379

Gallery hours:
Mon-Fri 11AM-5PM




KENT STATE
UNIVERSITY
Excellence in Action