

TELEPHONE DIRECTORY



MEDICINE HAT and DISTRICT

JULY
1934

PHONE
2345

TAXI

PHONE
2345

CHARLIE E. GRONBERG

PHONE
2233

TAXI

PHONE
2233

CARLE'S TAXI

A. B. CARLE

PHONE
Blair's TAXI
24 HOUR SERVICE **2727** 24 HOUR SERVICE

BENY & SON, LIMITED

BUICK, PONTIAC, OLDSMOBILE, CHEVROLET AND G. M. C. TRUCKS

PHONE

SALES AND SERVICE

PHONE

2009

Duco Authorized Refinishers. Open Day and Night.
410 South Railway Street

2009

J. E. MUIR & COMPANY LTD.

GOVERNMENT - MUNICIPAL
AND CORPORATION BONDS

BOUGHT - SOLD - QUOTED

PHONE
3001

F. C. C. RUBBRA, Manager
HULL BLOCK, MEDICINE HAT

RESIDENCE
3010

AMBULANCE

PHONE
2306

J. JESSOP NOTT

::

321-5th Street S.E., MEDICINE HAT

ALBERTA GOVERNMENT TELEPHONES

TELEPHONE DIRECTORY

OF

MEDICINE HAT

and DISTRICT

JULY, 1934

HEAD OFFICE : C.P.R. Building, Edmonton

HON. GEORGE HOADLEY

Minister of Railways and Telephones

J. D. BAKER

General Manager

A. M. MITCHELL

Comptroller

W. C. BRUCE

General Plant Superintendent

W. B. FERGUSON

General Traffic Superintendent

EMERGENCY CALLS

FIRE
3535

POLICE
2380

GAS
2665
NIGHT 2087

LIGHT
2726
NIGHT 3494

Telephone Service Calls

INFORMATION
92

LONG DISTANCE
0

TROUBLE
93

RURAL
91

Department of Railways and Telephones

Terms and Conditions

Under Which Telephone Service is Furnished

USE OF TELEPHONE

1. Telephone instruments and connecting lines are furnished to subscribers to be used in accordance with the rules as prescribed by the Department from time to time, and are to be used only by the subscriber, his agents or employees when engaged upon his business and must not be used for transmitting, receiving or delivering any message or communication in respect of which a consideration has been or is to be paid by any other party, except as permitted by the rules of the Department, nor used in any way in competition with the telephone business conducted by the Department. Subscribers will not be allowed to transfer their telephone number, service, or contract to any other party, unless arranged for in advance by a duly authorized official of the Department.

The right of the subscriber is to use the instruments and connecting lines where the Department may place them, but not elsewhere, under such rules as the Department may from time to time prescribe. He shall not extend their use to other individuals, except his servants upon his business; nor shall they be used for any calls or consideration to be paid by any person other than the subscriber; nor does this confer upon him the right to use any other instrument.

2. The lines and instruments over which the service is furnished remain the property of the Alberta Government Telephones and shall be carefully used by the subscriber, and only as herein stated in Clause No. 1; and no instrument, appliance or attachment not furnished by the Department shall be attached to or used in connection with these lines and instruments.

CONSTRUCTION

3. When it is necessary to erect poles or anchors in order to carry the wires from the main telephone line on the road allowance or street to the applicant's premises, such poles and anchors in connection therewith will be supplied and erected by the Department at the expense of the applicant.

CHARGES—HOW PAID

4. All charges for installations, moves, and monthly rentals shall be paid in advance, which shall entitle the subscriber to service with all subscribers connected to the same exchange. Regular toll rates will be charged for all service to points outside of the exchange.

5. Subscribers shall pay the installation charges, first rental instalment (and construction charges, if any) strictly in advance. Excess mileage charge will be added if outside of exchange limits. If subsequent rental accounts remain unpaid after the 15th of the month, service shall be discontinued and no rebate or reduction shall be allowed for such interruption to service.

6. Subscribers shall pay monthly, at schedule rates, for all messages and conversations over the Long Distance lines. If said accounts remain unpaid after the 15th of the month, further credit shall be refused until account is paid.

7. Subscribers shall pay promptly, upon presentation of account, all charges for other miscellaneous items. If these charges are not paid within 15 days, service shall be discontinued.

COMPLAINTS RE LONG DISTANCE SERVICE

8. While the Department will carefully consider complaints in connection with toll service at any time received, it would be appreciated if subscribers would make such complaints immediately after conversation has taken place.

VACATION ALLOWANCE

9. Should a subscriber desire to have his Exchange Residence Service temporarily discontinued, owing to the closing of his residence, he may do so without cancelling contract or having telephone removed, and, if arranged for in advance in writing, an allowance of two-thirds of the rate per month will be made for a period of not less than one month and not exceeding three months in any one year. Subscriber shall state, when making application, the period for which he expects to be absent and shall pay for this period in advance. Subscriber will notify the Department when he wishes service resumed, either in writing or by calling at the office and signing re-connect order. Owing to the fact that Rural Telephones cannot be disconnected without a special trip being made to their location, this regulation will not apply to Rural Subscribers.

MOVES

10. The telephone is first located where the subscriber directs and must not be moved or interfered with. **When the subscriber desires to have the telephone moved to any other location, notice in writing should be given to the local office, at least ten days before the change is desired.** The work will then be done as promptly as possible at regular charges.

JOINT USER SERVICE

11. Business joint user—one half the initial rate.

Residence joint user—Extra Directory Listing for each bona-fide member of Subscriber's family, \$1.00 per insertion, per issue. For each person not a member of Subscriber's family, listed in Alphabetical order, 50c. per insertion per month.

CANCELLATION OF SERVICE

12. Subscribers giving up service must notify the Department in writing, or call at office and sign "Take Out" order. Failing to do this, subscriber will be liable for all charges up to date instrument is removed or taken over by a new subscriber.

DIRECTORIES

13. The Department of Telephones assumes no liability on account of errors in or omissions from its directories. Telephone directories are and remain the property of Alberta Government Telephones. They are printed for the exclusive use of the Department's patrons and are loaned to its subscribers. All persons are cautioned against reproducing their contents

Subscribers must not use any binder, holder or other attachments, except as provided by the Department.

GENERAL

14. If a telephone installed for service at the residence rate be used for the purposes of business or profession, or otherwise than for the usual requirements of a residence, the Department may charge the business rate for such service without regard to the date to which the subscriber has paid for service at the residence rate. This also applies to subscribers, for residence service only, who advertise or use their telephone number in connection with their business or profession.

15. The Department will endeavor to keep the lines and instruments in good working order and undertakes to clear trouble or make repairs with all reasonable despatch, but does not guarantee uninterrupted service.

16. A subscriber's telephone number is not a part of the application for service, but numbers will only be changed when absolutely necessary or for the betterment of the service.

17. The use of obscene, profane or abusive language while using the telephone is strictly forbidden and service may be immediately discontinued for violation of this rule.

**For Particulars and Rates for
Bold Type Insertions, Extra Insertions and
Displayed Advertisements**

Apply to

Directory Advertising Department
Alberta Government Telephones

119 Sixth Avenue West

Calgary

HOW TO USE THE TELEPHONE

AUTOMATIC TELEPHONE

Consult the Telephone Directory for the correct number before you make a call. Do not trust to your memory.

Call "92" for information if the person or firm you wish to call is not listed in the Directory.

1. **Remove the Receiver.**—Be careful not to move the hook at any time during the call.

2. **What to Dial.**—It is necessary to dial each figure of the number in rotation.

3. **How to Dial.**—Suppose you are calling 2301. To dial this number proceed as follows:—

(1) Remove receiver.
(2) Place your finger in the hole over the figure "2."

(3) Turn the dial around until your finger strikes the finger stop, then lift your finger and allow the dial to return to rest **without touching it.**

(4) Repeat this operation for the figures 3-0-1. If you find that you have made an error before you have completed dialing, hang up the receiver for a few seconds, then remove the receiver, and dial your call again.

4. **Ring and Busy Signals.**—After you have finished dialing you should hear in the receiver either the ringing signal (an intermittent burr-ringing sound) indicating that the called telephone is being rung, or the busy signal—a rapid buzz-buzz—indicating that the called line is busy.

If you hear the ringing signal and receive no answer within a reasonable period, hang up the receiver and call later.

If you hear the busy signal hang up the receiver and after waiting a reasonable length of time call again.

If you hear neither signal within half a minute, hang up the receiver for a few seconds, then remove it and dial again—If the same condition is found after several attempts, dial "93" and report the condition to "Trouble" operator.

5. **After You Have Finished Talking.**—Hang up your receiver—This will disconnect you from the called telephone. Leave your receiver on the hook a few seconds before starting to make another call.

AUTOMATIC EXCHANGES

Information:—Call Information "92" for numbers of New Subscribers, Changes, Long Distance Line Charges, New Toll Offices, etc.

Trouble:—Complaints regarding Telephone Troubles should be reported to Trouble Operator, Telephone No. 93. When reporting trouble give telephone number affected and its location, also state as accurately as possible just how trouble manifests itself. Try to be specific, as incomplete information frequently causes delay in locating nature of trouble.

If a line you are trying to call repeatedly tests "busy," notify Trouble Operator, who will investigate whether same is caused by an abnormal condition on line, or from use. If any line appears too busy for good Service, write to the District Commercial Superintendent. Subscribers are requested not to engage Trouble or Information Operators in conversation longer than necessary, as by so doing the operator will be prevented from giving prompt attention to other patrons.

MANUAL TELEPHONE

Consult the Telephone Directory for the correct number before you make a call. Do not trust to your memory.

Ask for "Information" if the person or firm you wish to call is not listed in the Directory.

1. **To Call the Operator** give one long ring before removing the receiver from the hook and then hold receiver to the ear.

2. **When the Operator Replies** by saying, "Number?" give the number of the subscriber's telephone desired, slowly and distinctly.

Example:—"1429" should be pronounced "one four - two nine."

"175" should be pronounced, "One - seven five."

3. **Face the Transmitter** with the lips almost touching the mouthpiece. Speak naturally, distinctly and not too rapidly.

4. **Keep the Receiver to the Ear**, and the Operator, after repeating the number, will connect you with the subscriber called for. If the desired line is found to be in use the operator will report "Line Busy."

5. **When You Have Finished Talking** place the receiver on the hook, small end up, and give a short ring. This gives the operator a signal to disconnect and you are then in a position to call another number or to be called.

NOTE:—At Camrose, Lloydminster, Hanna and Wetaskiwin (Common Battery Exchange) no ringing, except by rural line subscribers, is necessary. Simply remove receiver from hook and in all other respects proceed as instructed above, placing the receiver on the hook when conversation is finished.

6. **Do Not Use the Telephone** during a thunderstorm.

7. **Rural Line Subscribers** should limit their conversation to Five Minutes duration and must not "listen in" to conversation not intended for them, as it interferes with the Service.

Complaints:—Complaints regarding telephone trouble and unsatisfactory Service should be made to the Local Manager, Agent or Chief Operator at the Office concerned, and if not rectified within a reasonable time, the matter should be referred to the General Traffic Superintendent at Edmonton.

LONG DISTANCE SERVICE

Rules and Regulations

To make a Long Distance Call, first call "Long Distance"—when the Long Distance Operator answers, give her your telephone number, followed by the details of your call as indicated below.

CLASSIFICATION OF LONG DISTANCE SERVICE

1. STATION-TO-STATION CALLS

The Station-to-Station rate applies when it is not desired to establish communication between particular persons.

Station-to-Station calls must be made by number whenever Telephone Directory information covering the called point is available. When such information is not available, the name or address under which the telephone is listed should be given, specifying that "anyone at that number will do."

EXAMPLE:—"4567, J. H. Brown speaking, I want to speak to Springdale, 684," or "I want to speak to Springdale, anyone at Mr. John Jones' residence (or business) telephone."

2. PERSON-TO-PERSON CALLS

(Evening and Night Rates do not apply to Person-to-Person Service.)

When a Long Distance Call is made, specifying that conversation is desired with a particular person and the connection is established and conversation held with that person, the "Person-to-Person" rate applies.

EXAMPLE:—"4567, J. H. Brown speaking, I want to speak to Springdale, 684, Mr. John Jones," or "If Mr. Jones is not there, I will speak to Mr. A. F. Smith."

NOTE:—*When a particular person is desired, the Long Distance operator must be so advised when the call is placed, otherwise charges will be made from the time connection is established with the telephone desired, whether the party is obtained or not.*

Appointment Calls

An appointment Call is a Person-to-Person call requiring communication to be established at a specified time, and order should be given to the Long Distance operator in the usual manner.

Messenger Calls

A Messenger Call is a Person-to-Person call, necessitating the services of a Messenger to secure the attendance of a specified person, and order should be given to the Long Distance operator in the usual manner. The Messenger Service and Report charges in such cases must be prepaid by the calling party if the call is placed from a Public Pay Station.

Collect Calls.

Collect calls are Person-to-Person or Station-to-Station Calls, the charges for which are reversed, *i. e.*, to be collected from the called party. In such cases the assent of the called party shall be obtained before the connection is established.

LONG DISTANCE SERVICE

Rules and Regulations—Continued

RATES AND CHARGES FOR LONG DISTANCE SERVICE

Long Distance Tolls will be charged to the subscriber from whose instrument the Long Distance call is placed, except those messages for which the receiving party expressly agrees to pay.

All rates quoted are for an initial period of three minutes. For overtime beyond the initial period a proportionate charge is made per minute.

The rates quoted on pages 7 and 8 are Station-to-Station Day Rates.

The Day Rate for a Station-to-Station call is the fundamental rate upon which the rates for other classes of Service are based.

The rate for a completed Person-to-Person, Appointment or Messenger Call, including Written Messages and Telegrams, either Paid or Collect is approximately 25% higher than the corresponding Station-to-Station Day Rate.

Day rates only are used in computing charges on Person-to-Person, Appointment and Messenger Calls, including Written Messages and Telegrams.

Evening and Night Rates

(These rates apply on Station-to-Station Calls only.)

Between 7 p.m. and 12 midnight the Station-to-Station rates are approximately one-half the Day rates and are known as "Evening Rates."

Between 12 midnight and 4.30 a.m. the Station-to-Station rates are approximately one-fourth the Day Rates and are known as "Night Rates."

(NOTE:—In no case shall the Evening or Night rate, as the case may be, be less than 25c. for the initial period, unless the Day rate is less, in which case the Day, Evening and Night Rates shall be the same.)

Report Charges

Under certain conditions a Report Charge of approximately one-quarter of the Station-to-Station Day rate will be made on uncompleted Person-to-Person, Appointment and Messenger Calls, including Written Messages and Telegrams.

A Report Charge shall not be made on a Station-to-Station call except when such call is placed "Collect" and the charges have not been accepted.

PAY STATION SERVICE

Pay Station Telephones have been installed by the Department for the convenience of subscribers and the general public, in suitable locations throughout the Province, Local conversations may be had from these telephones at a charge of 5 cents for 5 minutes. Long Distance Service is furnished at regular tariff rates upon deposit of the amount of the initial charge (covering three minutes conversation) the usual charges being made for excess time.

Non-subscribers who desire to use Subscribers' telephones should be referred to the nearest Public Pay Station.

If there is anything about our rates and practices you do not fully understand, please call our Local Manager or Chief Operator and they will be glad to explain.

LONG DISTANCE RATES

From Medicine Hat

To Places connected with the Long Distance Lines of the Alberta Government
Telephones and Connecting Systems in Alberta.

NOTE:—These Rates are Subject to Change without Notice.

TO	Station- to-Station Day Rate 3 Mins.	TO	Station- to-Station Day Rate 3 Mins.	TO	Station- to-Station Day Rate 3 Mins.	TO	Station- to-Station Day Rate 3 Mins.
	\$ c		\$ c		\$ c		\$ c
Abee	1.95	Calgary	1.00	East Coulee	.75	Hughenden	1.05
Abilene	1.80	Calmar	1.65	Eckohill	1.95	Hussar	.70
Acme	1.00	Camp Creek	2.10	Eckville	1.50	Hylo	2.10
Airdrie	1.05	Campsie	2.10	Edberg	1.35		
Alberta Beach	1.80	Camrose	1.35	Eden Valley	1.05		
Alcomdale	1.80	Canmore	1.35	Edgerton	1.15	Iddesleigh	.35
Alderson	.25	Carbon	.90	Edmonton	1.65	Innisfail	1.20
Alexo	.80	Cardston	.85	Edmonton Beach	1.80	Innisfree	1.50
Alhambra	1.50	Carlton Hill	2.10	Edson	2.10	Iola	1.50
Alix	1.20	Carmangay	.70	Edward	1.80	Irma	1.20
Alliance	1.05	Caroline	1.50	Egremont	1.80	Iron Springs	.55
Alsask, Sask.	.60	Carrot Creek	2.10	Elk Point	1.65	Irricana	1.00
Altario	.85	Carstairs	1.15	Elkwater Lake	.25	Irvine	.15
Andrew	1.65	Carvel	1.80	Elkscott	1.95	Islay	1.50
Angle Lake	1.65	Castor	1.00	Elnora	1.10		
Antross	1.65	Cavendish	.35	Empress	.45	Jarrow	1.35
Ardmore	1.80	Cereal	.60	Endiang	.95	Jarvie	2.10
Armada	.60	Cessford	.50	Entwistle	1.95	Jenner	.35
Armistice	1.65	Champion	.70	Erixon	1.35	Judson	.55
Arrowwood	.75	Chauvin	1.15	Esther	.70		
Ashmont	1.80	Cherhill	1.95	Etzikom	.30	Kahwin	1.80
Athabasca	2.10	Chinook	.60	Evansburg	1.95	Kananaskis	1.35
Atlee	.40	Chip Lake	1.95	Evarts	1.35	Kapasiwin	1.80
		Chipman	1.65	Exshaw	1.35	Kevisville	1.35
		Chisholm	2.25			Kew	1.05
Banff	1.50	Claresholm	.80	Fallis	1.80	Killam	1.20
Barons	.70	Clarinda	.55	Fawcett	2.10	Kingman	1.50
Barrhead	1.95	Clive	1.35	Ferintosh	1.35	Kinsella	1.35
Bashaw	1.35	Clyde	1.95	Flatbush	2.25	Kipperville	.45
Bassano	.60	Coalspur	2.10	Flat Lake	1.80	Kirriemuir	.80
Battle Lake	1.65	Coal Valley	2.10	Florann	.40	Kitscoty	1.50
Bawlf	1.35	Cochrane	1.15	Foisy	1.35	Knob Hill	1.65
Beacon Hill	1.80	Cold Lake	1.95	Foothills	2.10		
Beauvallon	1.65	Columbine	1.80	Foremost	.35	Lac La Biche	2.10
Beaver Crossing	1.80	Compeer	.80	Forestburg	1.15	Lacombe	1.35
Beaver Heights	.90	Comrey	.40	Fort Assiniboine	2.10	Lac Ste Anne	1.80
Bellis	1.80	Comrie	1.80	Fort Kent	1.80	Laford	1.65
Belvedere	1.95	Condor	1.50	Fort Saskatchewan	1.65	Lake Isle	1.95
Benalto	1.35	Conrad	.45	Fraspur	1.65	Lakeview	1.65
Bentley	1.35	Consort	.85	Freedom	1.95	Lamont	1.65
Berry Moor	1.80	Cooking Lake	1.65	Gadsby	1.05	Landonville	1.65
Beynon	.80	Coronado	1.80	Gainford	1.95	Langdon	.90
Big Fish Lake	1.65	Coronation	1.80	Galahad	1.10	Lavoy	1.50
Big Valley	1.05	Coutts	.60	Garden Plain	.85	Lawton	1.95
Bindloss	.40	Cowley	.95	Garred	1.80	Lea Park	1.50
Birdsholm	.40	Craigmyle	.85	Gibbons	1.80	Leduc	1.65
Blackie	.85	Cremona	1.20	Gleichen	.75	Leedale	1.50
Blairmore	1.05	Crossfield	1.10	Glendon	1.80	Lees	1.05
Bloomsbury	2.10	Cummings	1.35	Glenevis	1.95	Legal	1.80
Blue Ridge	2.10	Czar	1.05	Glenwood	.85	Le Goff	1.80
Bluffton	1.50			Gorman	2.10	Leo	1.00
Bolan	1.65	Dakin	2.10	Granum	.80	Leslieville	1.60
Bon Accord	1.80	Dalroy	.95	Grassy Lake	.35	Lethbridge	.65
Bonnie Glen	1.65	Dapp	2.10	Green Court	2.10	Lewiston	2.10
Bonnyville	1.80	Darwell	1.95	Groton	.45	Linaria	2.10
Bordenave	1.80	Davis	2.10	Gull Lake	1.35	Lindbergh	1.65
Bottrel	1.20	Daysland	1.35	Gunn	1.80	Lisburn	1.95
Bow City	.50	Deep Creek	2.25	Halfway Lake	1.95	Little Gem	.75
Bow Island	.25	Del Bonita	.75	Halkirk	1.05	Lloydminster	1.35
Bowden	1.20	Delburne	1.15	Hamlin	1.80	Lomond	.60
Bowell	.10	Delia	.85	Hanna	.80	Lonira	2.10
Bowmanton	.15	Derwent	1.50	Hardisty	1.15	Looma	1.65
Box Springs	.10	Desjarlais	1.65	Hay Lakes	1.50	Lougheed	1.20
Boyle	2.10	Deville	1.65	Heaton Moor	1.95	Lovett	2.10
Boyne Lake	1.80	Didsbury	1.15	Heinsburg	1.65	Loyalist	.85
Bragg Creek	1.15	Donalda	1.20	Heisler	1.20	Lucky Strike	.45
Brant	.80	Donatville	2.10	Hemaruka	.75	Lunnford	1.95
Breezelawn	.10	Doucette	1.65	Hespero	1.50	Luscar	2.25
Breton	1.65	Downie	1.95	Highridge	1.95		
Brooks	.45	Downing	1.80	High River	.90	Mackay	2.10
Brousseau	1.65	Drayton Valley	1.80	Hilda	.30	Macleod	.80
Bruce	1.35	Drumheller	.85	Hoadley	1.65	Magnolia	1.95
Bruderheim	1.80	Duchess	.45	Holden	1.50	Magrath	.70
Buffalo	.35	Duclos	1.80	Holmes Crossing	2.10	Mallaig	1.80
Buffalo Head Ranch	1.05	Dunstable	1.95			Ma-Me-O Beach	1.50
Bulwark	1.00	Durlingville	1.80			Manola	1.95
Burdett	.30	Duvernay	1.65			Manville	1.50
Busby	1.95	Eastbourne	1.80				
Byemoor	.95	Eastburg	1.95				
Cadomin	2.25						
Calahoo	1.80						

TO	Station- to-Station Day Rate 3 Mins.	TO	Station- to-Station Day Rate 3 Mins.	TO	Station- to-Station Day Rate 3 Mins.	TO	Station- to-Station Day Rate 3 Mins.
Manyberries	\$.30	Orion	\$.30	Rose Lynn	\$.60	Taber	\$.45
Markerville	1.35	Owlsye	1.80	Rosevear	2.10	Tawatinaw	1.65
Marwayne	1.50	Oyen	.60	Rossbeard	1.65	Tees	1.35
Maunsell	.85			Rossington	1.95	Thelma	.25
Mayerthorpe	2.10			Rowley	.95	Therien	1.80
McLaughlin	1.35	Pakan	1.80	Rumsey	1.00	Thorhild	1.95
Meadowview	1.95	Park View	.95	Rush Lake	.15	Thorsby	1.65
Meanook	2.10	Pashley	.10	Ryley	1.50	Three Hills	1.00
Meeting Creek	1.35	Patricia	.40			Tilley	.35
Mellowdale	2.10	Paxson	2.10	St. Albert	1.80	Tipperary	2.10
Mercoal	2.10	Pearsonville	.20	St. Kilda	.50	Tofield	1.50
Metiskow	1.00	Peat	1.65	St. Lina	1.80	Tomahawk	1.80
Michichi	.85	Peers	2.10	St. Paul	1.65	Trochu	1.05
Milk River	.55	Pekisko	1.00	St. Vincent	1.80	Turner Valley	1.05
Millarville	1.05	Pembridge	1.95	Saddle Lake	1.65	Two Hills	1.65
Millet	1.50	Pemukan	.85	Sammons	.50		
Millicent	.45	Pendant d'Oreille	.40	Sangudo	1.95	Vale	.15
Milo	.65	Pendryl	1.65	Sarrail	2.10	Vanesti	1.35
Minburn	1.50	Penhold	1.20	Saunders	1.65	Vegreville	1.50
Mirror	1.20	Perryvale	2.10	Schuler	.25	Venice	2.10
Mission	2.10	Phillips	1.35	Scollard	1.00	Vermilion	1.50
Monitor	.85	Pickardville	1.95	Scotfield	.70	Veteran	.85
Morecambe	1.65	Pincher Creek	.95	Seaforth	.70	Victoria	1.80
Morinville	1.80	Pine Creek	1.80	Seba	1.80	Viking	1.35
Morrin	.90	Plains	2.10	Sedalia	.70	Vilna	1.80
Mossie	2.10	Plamondon	2.10	Sedgewick	1.20	Vimy	1.95
Mountain Park	2.10	Pollockville	.55	Seven Persons	.15	Vulcan	.75
Moyerton	1.35	Ponoka	1.35	Seymour	1.95		
Mulhurst	1.65	Priddis	1.05	Shandro	1.80	Wabamun	1.80
Mundare	1.65	Princeton	1.00	Sheep Creek	1.05	Wahstao	1.80
Munson	.85	Provost	1.00	Sheerness	.70	Wainwright	1.20
Musidora	1.65			Shoal Creek	2.10	Wake-Shyre Lodge	1.15
Myrnam	1.50			Sibbald	.60	Walker	.10
		Radway	1.80	Sion	1.95	Walsh	.20
Naco	.70	Rainier	.45	Skiff	.40	Waltross	.50
Nanton	.85	Ranchville	.25	Smoky Lake	1.80	Wardlow	.45
Neerlandia	2.10	Ranfurly	1.50	Snell's Mills	1.65	Warner	.55
Nelspur	1.65	Raven	1.35	Soda Lake	1.65	Warspite	1.80
Nemiscam	.30	Ray	1.80	Southworth	1.95	Wasel	1.80
Nestow	1.95	Raymond	.60	Spedden	1.80	Waskatenau	1.80
New Brigden	.70	Redcliff	.10	Spring Point	.90	Waterton Park	1.00
Newbrook	1.95	Red Deer	1.35	Stampede	1.05	Wayne	.80
New Dayton	.55	Redland	.85	Standard	.80	Westerose	1.50
New Sarepta	1.50	Red Raven	1.35	Stanger	1.95	Westlock	1.95
Niton	2.10	Redwater	1.80	Stanmore	.70	Wetaskiwin	1.50
Nobleford	.65	Red Willow	1.15	Stavely	.85	Whisky Gap	.80
Nordegg	1.80	Retlaw	.45	Sterco	2.10	White Court	2.25
Northbank	1.80	Richards	2.10	Stettler	1.15	Whitla	.15
North Cooking Lake	1.65	Richdale	.75	Stevieville	.45	Wildwood	1.95
Northern Valley	1.65	Rife	1.80	Stockland	1.05	Willingdon	1.65
Northleigh	1.80	Rimbej	1.50	Stony Plain	1.80	Willow Creek	.80
		Rio Alto	1.05	Strathmore	.85	Winfield	1.65
O'Connor	.20	Riverbow Ferry	.45	Strome	1.20	Winnifred	.20
Okotoks	.95	Rochester	1.95	Styal	1.95	Wisdom	.20
Olds	1.20	Rochford	2.10	Suffield	.20	Wolf Creek	2.10
Olson Coulee	.85	Rockyford	.85	Sullivan Lake	.90	Wrentham	.50
Onaway	1.80	Rocky Mtn. House	1.50	Sunnynook	.60		
Opal	1.80	Rocky Rapids	1.80	Sunnyside	1.80	Yeoford	1.65
		Rosalind	1.35	Sylvan Lake	1.35	Youngstown	.65
		Rosebud	.85				
		Roselea	2.10				

In addition to the points on pages 7 and 8 Long Distance Connection may be had also with the following places in Alberta and British Columbia, rates for which can be obtained by calling "Long Distance":—

ALBERTA POINTS

Acadia Valley	Baronet	Blackfoot	Caldwell	Coal City
Acheson	Bathgate	Blakesville	Calling Lake	Coaldale
Adkins	Battle	Blondheim	Calverly	Coalhurst
Aetna	Battle Bend	Blood Reserve	Campbell Lake	Coleman
Agricola	Battle Ridge	Bodo	Cappon	Collinton
Albay	Battleview	Bonlea	Carbondale	Commerce
Albion Ridge	Beaumont	Borradaile	Cardiff	Conjuring Creek
Aldersyde	Beaver Hills	Botha	Carnforth	Content
Alice Lake	Beaver Lake	Bow Valley	Carseland	Copeville
Allerston	Beaver Mines	Bowville	Carthew	Cornucopia
Angus Ridge	Beazer	Bradshaw	Casavant	Countess
Ankerton	Beddington	Bremner	Cassils	Cousins
Anzac	Beiseker	Bretona	Cayley	Craigmillar
Ardenode	Bellevue	Brightview	Chailey	Crowfoot
Ardenville	Bellshill	Britain	Chancellor	Currey
Ardley	Belmont	Brocket	Chadle	Dahmer
Armena	Bennett	Brooksley	Chesterwold	Dalemead
Asker	Benyon	Brownfield	Chigwell	Dauntless
Avalon	Beverly	Brownlow's L'ndg	Chin	Davisburg
Avion	Bircham	Buford	Chlndonald	Deerling
Baintree	Bismark	Burnis	Clearview	Delacour
Balmoral	Bissell	Burnt Lake	Close	Delph
Banthead	Bittern Lake	Cadogan	Clover Bar	Dewberry
Bardo	Black Diamond	Cadbeck	Cluny	De Winton
Barnwell	Blackfalds	Calder	Clymont	

ALBERTA POINTS—Continued

<p>Diamond City Dickson Diligence Dina Dinant Dinton Dobson Dodds Dog Pound Doondale Doreenlee Doris Dry Fork Duagh Duffield Duhamel Dunmore Eagle Hill Earlie Earling Earlville Eastervale Eastway Edison Edwell Elk Island Elk Island Park Elkton Elkwater Elliesslie Emery Enchant Ensign Ensliegh Erskine Everett Ewelme Excel Excelsior Fabyan Fairacres Fairbank Fairfield Fairydell Faith Falun Farrow Federal Fedorah Fenn Ferrybank Ferry Point Fishburn Fleet Forest Lawn Four Nine Frank Frankburg Freeman River Gahern Gem Ghost Pine Gilby Gillen Gilpin Glady's Glenbow Glenford Gleniffer Golden Spike Good Hope Good Luck Gopher Head Graindale</p>	<p>Grainger Graminia Grand Valley Grant Lake Green Glade Greenshields Griesbach Grosmont Gros Ventre Gwynne Hackett Hairy Hill Halladay Halley Hallman Harmattan Hartell Hastings Coulee Hawkeye Haynes Hayter Hazelmere Hearnleigh Heath Heath Creek Heather Brae Herronton Hetherington Highfield Hillcrest Hill End Hilliard Hillspring Hobbema Horse Hills Horseshoe Coulee Horseshoe Falls Horseshoe Lake Hubalta Hughes Hunterville Hutton Huxley Indus Industrial School Inga Ingleton Inglis Irwinville Jeffrey Joffre Josephburg Jumping Pound Kaleland Kanata Kathyrn Kelsey Keoma Kenex Kessler Kilbourn Kimball Kipp Kirkcaldy Knee Hill Valley Krakow La Calmette Lake Demay Lake Minnewanka Lamoureux Lanfine Larsen Lathom Lavesta</p>	<p>Lawndale Leavitt Leeshore Leighton Leopoldville Lewisville Liberty Lineham Livingston Loch Sloy Lockhart Lone Butte Long Long Coulee Longview Lousana Lundbreck Lusignan Luzan Madden Majorville Makepeace Malmo Manfred Maple Leaf Martins Masinasin Maughan Maunder's Maybutt Mayton Mazepa McEwen McNally Meadow Lake Menaik Merna Mewassin Midnapore Miller Milnerton Minott Monarch Morley Morningside Mossleigh Mound Mountain View Mt. Lookout Murray Valley Nakamun Namaka Namayo Neapolis Neighbourview Nevis New Lindsay New Lunnon New Norway New Oxley New Spruce Grove Nightingale Nisbet Nisku Norton Noyes Crossing Ogden Ohaton Old Brant Old Spruce Grove Olin Creek Oliver O'Mara Orton</p>	<p>Otoskiwan Ouelletteville Owens Oxville Paradise Valley Parkland Partridge Hill Passburg Patience Peacock Pearce Peno Pibroch Picture Butte Pincher Station Pine Lake Pirmez Creek Pleasant View Poplar Ridge Poplar Site Pretty Hill Puffer Purple Springs Quarrel Queenstown Rabbit Hill Raley Red Lodge Reid Hill Reist Rexboro Ribstone Rich Valley Riddellvale Rising Sun Riviere Qui Barre Rockeling Bay Rocky View Rodino Rolling Green Rosedale Rosemary Rosenheim Rosenroll Rosyth Round Hill Rusylvia St. Michael Salisbury Saltax Sarcee Sather Scandia Scapa Scotstoun Seebe Sharrow Shepard Shouldice Sidcup Silver Lake Simons Valley Social Plains Southesk Springbank Spring Coulee Springdale Spring Lake Springvale Spruce Grove Stand Off Staplehurst Star</p>	<p>Sterlingville Stirling Stocks Stoppington Strand Strangmuir Streamstown Sugar Bowl Sulphur Springs Summerland Summerview Sundre Sunnydale Sunnyslope Superior Swalwell Sweet Grass, Mont. Talbot Taylorville Telfordville Terrace Lake The Hub Throne Tindastoll Tolland Tommy LaPotac Tongue Creek Torrington Travers Tudor Turin Twelve Mile Coulee Twin Butte Twin Lakes Twining Ulster Vauxhall Viewpoint Villeneuve Villeroe Volmer Wanda Warden Warwick Waterglen Watts Waybrook Wealthy Welling Wellsdale Wellsville Weno Westcott Westward Ho White Sand Beach White Star Mine Whitewood Lake Whitford Wildmere Willowdale Willowlea Wilmot Wilson Wilton Park Wimborne Winterburn Woodhouse Wood River Woolford Wostok Yorkville Zawale Zetland</p>
---	---	--	---	---

BRITISH COLUMBIA POINTS IN THE CROW'S NEST PASS

<p>Baynes Lake Bull River Coal Creek Cokato Corbin Cranbrook Crow's Nest (Mc-Cool)</p>	<p>Crusher Camp Elko Fairy Creek Fernie Fort Steele Galloway Hanbury</p>	<p>Hosmer Isadore Lookout Jaffray Kennedy's Camp Kimberley Kingsgate Lumberton</p>	<p>Marysville McGillivray Michel Morrissey Moyle Moyle Mountain Natal</p>	<p>St. Eugene Mission Waldo Wanklyn Wardner Wycliffe Yahk</p>
--	--	--	---	---

FOR LONG DISTANCE RATES

SEE PAGES 7 TO 11 OR CALL "92" FOR INFORMATION

TRANS-OCEANIC RATES from ALBERTA

TO	1st Three Minutes	Each Add'l Minute	Report Charge
ARGENTINA—Province of Buenos Aires	\$36.00	\$12.00	\$3.00
Other Provinces	37.20	12.40	3.00
AUSTRALIA	51.00	17.00	5.00
AUSTRIA	39.00	13.00	4.00
BAHAMA ISLANDS	18.00	6.00	1.50
BALEARIC ISLES	40.50	13.50	4.50
BELGIUM	37.50	12.50	3.50
BERMUDA ISLANDS	21.00	7.00	1.50
BRAZIL—State of Rio de Janeiro only	36.00	12.00	3.00
CANARY ISLANDS	43.50	14.50	5.50
CENTRAL AMERICA—(Costa Rica; Guatemala; Honduras; Nicaragua; Panama, including Canal Zone)	24.00	8.00	1.50
CHILE	39.00	13.00	3.00
CZECHO-SLOVAKIA	39.00	13.00	4.00
DANZIG, FREE CITY OF	39.00	13.00	4.00
DENMARK	39.00	13.00	4.00
DUTCH EAST INDIES—Java, Island of	33.00	11.00	3.00
Sumatra, Island of	39.00	13.00	3.00
EGYPT	42.00	14.00	4.00
ENGLAND	36.00	12.00	3.00
FINLAND	44.25	14.75	5.75
FRANCE	37.50	12.50	3.50
GERMANY	39.00	13.00	4.00
GIBRALTAR—CROWN COLONY OF	40.50	13.50	4.50
GREAT BRITAIN	36.00	12.00	3.00
HAWAIIAN ISLANDS—Honolulu and elsewhere on Island of Oahu	24.00	8.00	2.00
Other Islands (Hawaii, Kauai and Maui)	27.00	9.00	2.00
HOLLAND or NETHERLANDS	37.50	12.50	3.50
HUNGARY	40.50	13.50	4.50
INDIA	51.00	17.00	5.00
IRELAND	37.50	12.50	3.50
ISLE OF MAN	37.50	12.50	3.50
ITALY—Including mainland and Sicily	40.50	13.50	4.50
LATVIA	40.50	13.50	4.50
LITHUANIA	40.50	13.50	4.50
LUXEMBOURG	37.50	12.50	3.50
MOROCCO (Spanish) Ceuta only	42.00	14.00	5.00
NORWAY	40.50	13.50	4.50
PALESTINE	43.50	14.50	4.50
PERU	36.00	12.00	3.00
PHILIPPINE ISLANDS—Manila and Local Service Area	33.00	11.00	3.00
Provinces of Bulacan, Pampanga and Tarlac	34.20	11.40	3.00
Provinces of Pangasinan La Union and City of Baguio	36.00	12.00	3.00
POLAND	40.50	13.50	4.50
PORTUGAL (Lisbon only)	40.50	13.50	4.50
ROUMANIA	45.00	15.00	6.00
SCOTLAND	36.00	12.00	3.00
SIAM—Bangkok only	51.00	17.00	5.00
SOUTH AMERICA (Colombia, Venezuela)	27.00	9.00	2.00
SPAIN	40.50	13.50	4.50
SWEDEN	40.50	13.50	4.50
SWITZERLAND	39.00	13.00	4.00
UNION OF SOUTH AFRICA	51.00	17.00	5.00
URUGUAY	37.20	12.40	3.00
WALES	36.00	12.00	3.00
YUGO-SLAVIA	40.50	13.50	4.50

The above rates apply to all classes of calls. Collect calls will not be accepted.

RATES from ALBERTA to SHIPS AT SEA

Telephone service is available to certain of the larger steamships while the vessels are at sea and within calling range. Calls may be made to these vessels or further information obtained regarding rates and periods during which the service is available, by calling "Long Distance."

	1st Three Minutes	Each Add'l Minute	Report Charge
Steamships: Albert Ballin, Aquitania, Berengaria, Bremen, Caledonia, Columbus, Conte di Savoia, Deutschland, Empress of Britain, Europa, Hamburg, Homeric, Ile de France, Leviathan, Majestic, New York, Olympic, Rex	\$24.00	\$8.00	2.00
Steamships:—Monarch of Bermuda and Queen of Bermuda	15.00	5.00	1.00

These rates apply to all classes of calls. Collect calls will not be accepted.
NOTE—Reduced rates in effect when ship is less than 500 nautical miles from New York.

Rates to Certain Points in Canada and the United States of America

Rates to points not listed below may be obtained by calling Long Distance

FROM MEDICINE HAT

TO	STATION-TO-STATION (Mountain Standard Time)								Report Charge
	4.30 a.m. to 7.00 p.m.		7.00 p.m. to 8.30 p.m.		8.30 p.m. to 4.30 a.m.		Person to Person		
	3 Mins.	Add. Min.	3 Mins.	Add. Min.	3 Mins.	Add. Min.	3 Mins.	Add. Min.	
AKRON, OHIO	\$5.75	\$1.75	\$4.50	\$1.50	\$3.25	\$1.00	\$7.25	\$2.25	\$0.75
BALTIMORE, MD.	6.50	2.00	5.25	1.75	3.75	1.25	8.25	2.75	.80
BOISE, IDAHO	2.15	.70	1.80	.60	1.20	.40	2.75	.90	.40
BOSTON, MASS.	7.00	2.25	5.50	1.75	4.00	1.25	8.75	2.75	.90
BRANDON, MAN.	2.05	.65	1.75	.55	1.15	.35	2.55	.85	.35
BROOKLYN, N.Y.	7.00	2.25	5.50	1.75	4.00	1.25	8.75	2.75	.90
BUFFALO, N.Y.	6.00	2.00	4.75	1.50	3.50	1.00	7.50	2.50	.75
BUTTE, MONT.	1.35	.45	1.15	.35	.80	.25	1.75	.55	.25
CHICAGO, ILL.	4.50	1.50	3.75	1.25	2.50	.80	5.75	1.75	.65
CINCINNATI, OHIO	5.50	1.75	4.25	1.25	3.00	1.00	7.00	2.25	.70
CLEVELAND, OHIO	5.75	1.75	4.50	1.50	3.25	1.00	7.25	2.25	.75
DENVER, COLO.	3.00	1.00	2.45	.80	1.65	.55	3.75	1.25	.50
DETROIT, MICH.	5.25	1.75	4.25	1.25	3.00	1.00	6.50	2.00	.70
DULUTH, MINN.	3.50	1.00	2.80	.90	1.90	.60	4.50	1.50	.55
GREAT FALLS, MONT.	.95	.30	.85	.25	.55	.15	1.30	.40	.20
HALIFAX, N.S.	8.25	2.75	6.75	2.25	5.00	1.50	10.25	3.25	1.00
HELENA, MONT.	1.20	.40	1.05	.35	.70	.20	1.60	.50	.25
KANSAS CITY, MO.	4.00	1.25	3.25	1.00	2.25	.75	5.00	1.50	.60
LOS ANGELES, CAL.	4.25	1.25	3.50	1.00	2.50	.80	5.25	1.75	.60
MILWAUKEE, WIS.	4.25	1.25	3.50	1.00	2.50	.80	5.25	1.75	.60
MINNEAPOLIS, MINN.	3.50	1.00	2.80	.90	1.90	.60	4.50	1.50	.55
MONTREAL, QUE.	6.50	2.00	5.25	1.75	3.75	1.25	8.25	2.75	.80
NEW YORK, N.Y.	7.00	2.25	5.50	1.75	4.00	1.25	8.75	2.75	.90
OAKLAND, CAL.	3.75	1.25	3.00	1.00	2.00	.65	4.75	1.50	.55
OMAHA, NEB.	3.50	1.00	2.80	.90	1.90	.60	4.50	1.50	.55
OTTAWA, ONT.	6.25	2.00	5.00	1.50	3.50	1.00	7.75	2.50	.80
PHILADELPHIA, PENN.	6.75	2.25	5.50	1.75	4.00	1.25	8.50	2.75	.90
PITTSBURG, PENN.	6.00	2.00	4.75	1.50	3.50	1.00	7.50	2.50	.75
PORTLAND, ORE.	2.55	.85	2.10	.70	1.40	.45	3.25	1.00	.45
REGINA, SASK.	1.65	.55					2.05	.65	
ST. JOHN, N.B.	7.50	2.50	6.00	2.00	4.50	1.50	9.50	3.00	.90
ST. PAUL, MINN.	3.50	1.00	2.80	.90	1.90	.60	4.50	1.50	.55
SALT LAKE CITY, UTAH	2.55	.85	2.10	.70	1.40	.45	3.25	1.00	.45
SAN FRANCISCO, CAL.	3.75	1.25	3.00	1.00	2.00	.65	4.75	1.50	.55
SASKATOON, SASK.	1.50	.50					1.85	.60	
SEATTLE, WASH.	2.35	.75	1.95	.65	1.30	.40	3.00	1.00	.40
SHELBY, MONT.	.70	.20	.60	.20	.40	.10	1.00	.30	.20
SPOKANE, WASH.	1.65	.55	1.40	.45	.95	.30	2.05	.65	.30
TACOMA, WASH.	2.35	.75	1.95	.65	1.30	.40	3.00	1.00	.40
TORONTO, ONT.	5.75	1.75	4.50	1.50	3.25	1.00	7.25	2.25	.75
VANCOUVER, B.C.	3.00	1.00	2.25	.75	1.50	.50	3.75	1.25	.75
VICTORIA, B.C.	3.60	1.00	2.65	.85	1.75	.55	4.50	1.50	.90
WASHINGTON, D.C.	6.75	2.25	5.50	1.75	4.00	1.25	8.50	2.75	.90
WINNIPEG, MAN.	2.55	.85	2.10	.70	1.40	.45	3.25	1.00	.45

*On station-to-station calls to points in Saskatchewan, Evening rates (7 p.m. to midnight) are one-half of day rates. Night rates (midnight to 4.30 a.m.) are one-quarter of day rates.

*“I want my telephone
put back, please”*

HARDLY a day passes but that some person who gave up his telephone service in recent months orders it restored. In many cases, people feel that it is false economy to be without a telephone . . . that the small cost of the service is repaid many times each month in convenience, in time and actually in money saved.

Some miss the close and personal contact with friends that telephone service makes possible. Others mention the loss of many pleasant, impromptu social “get-togethers” when their friends are unable to reach them by telephone.

It is all true . . . what these customer friends of ours say: Telephone service costs so little and its value is so great that in most instances it really doesn't pay to try to do without it.

If *you* are missing your telephone . . . just get in touch with our business office. We'll send a man out with a telephone in a hurry.



Alberta Government Telephones

MEDICINE HAT

EXCHANGE AND OFFICE, FIFTH STREET EAST

CONTINUOUS SERVICE

INFORMATION —For Information regarding New Subscribers, change of Telephone Numbers, Long Distance Line Charges, New Toll Offices, Etc.	Call "Information" Dial	92
TROUBLE —To Report Telephone Out of Order or unsatisfactory Local Service	Call "Trouble" Dial	93
	To Report unsatisfactory Long Distance Service Call "Chief Operator" Dial	3417
LONG DISTANCE —To Call Long Distance Operator	Dial	0
RURAL —For List of Rural Subscribers, see pages following list of Exchange Subscribers.		
TO CITY SUBSCRIBERS —For connection with Rural Subscribers Dial 91, and when Operator answers give the Number of Rural Subscriber desired, distinctly, as R 3-1-4 .		
FIRE —In case of Fire	Dial	3535
POLICE —To call the Police	Dial	2380

LONG DISTANCE CALLS ARE CLASSIFIED

STATION-TO-STATION CALLS *When you will speak to anyone at the distant telephone.*

This type of call meets most needs and is at the lowest rate. It is the simple basic call, requiring only the connecting of two distant telephones.

PERSON-TO-PERSON CALLS *When a particular person is desired.*

Entailing, as it does, more labor and longer use of lines, this type of call takes a higher rate. In the event of the call not being completed a small charge is made for reports furnished.

These Special Services Are Also Available

Appointment Calls . are made when a particular person is required at a specified time. The operator makes the appointment with the distant party.

Collect Calls When called party is requested to pay for and accepts charges.

Messenger Calls . . are made when the called party cannot be reached by telephone and a messenger is sent to bring the party to the telephone.

Appointment and Messenger Calls are on person-to-person basis.

GIVE THE OPERATOR THE DISTANT NUMBER IF YOU CAN—IT SPEEDS UP THE SERVICE

J. Jessop Nott

Director of
Funeral Service



LINCOLN AMBULANCE SERVICE

Special Equipment for Comfort of Patients on Railway Journey.

MONUMENTS

PHONE

2306

321-5th Street S.E., MEDICINE HAT

ALBERTA SAVINGS CERTIFICATES

Backed by the Entire Resources of the Province,
 Provide a Safe Depository for Savings and
 Pay an attractive interest rate.

5% Interest per annum paid on Term Certificates Redeemable in One, Two or Three Years.

3½% Interest per annum allowed on Certificates which are Redeemable on Demand.

Apply to

Alberta Government Savings Branch

Treasury Department, Edmonton

HON. R. G. REID, Provincial Treasurer.

THE S. E. GUST STORES

GROCERIES AND FRESH FRUITS

PHONE ORDERS PROMPTLY ATTENDED TO

FREE DELIVERY

2502

626 3rd STREET, MEDICINE HAT

2502

INFORMATION

92

For Information regarding New Subscribers, Changes of Telephone Numbers, Long Distance Rates, New Toll Offices, Etc.,

Dial 92

LONG DISTANCE

0

For Long Distance Rates, Dial 92. To report unsatisfactory Long Distance Service, Dial 3417 and ask for Chief Operator.

RURAL 91

To obtain connection with a Rural Subscriber, Dial 91, and ask for Number desired.

TROUBLE

93

To report Telephone Out of Order and Unsatisfactory Local Service.

Dial 93

MEDICINE HAT

EXCHANGE SUBSCRIBERS.

(For Rural Subscribers see Page 26).

A

Aberdeen Cleaners & Tailors 411 Aberdeen St...3356

ABERDEEN DRUG STORE

B F Souch Phm B 399 Aberdeen St3218

Adams F J res 352 2nd St NW3616

Adkins B Grocery Store 539a N Railway St.....3652

Adkins Wm A res 445 4th St3119

ALBERTA CARTAGE & TAXI

CO M F Homer Prop 701 1st St SE2104

M F Homer res 362 7th St2163

ALBERTA CLAY PRODUCTS

CO LTD Cor Clay and 6th St2578

Factory Office T Graham & W C Yuill2302

H C Yuill Mgr res 442 1st St SE2283

Alberta Dry Cleaners 559 2nd St3138

ALBERTA FOUNDRY & MACHINE CO LTD THE

Foundry St2553

ALBERTA GOVERNMENT TELEPHONES

Information regarding new subscribers and

change of telephone numbers92

Telephones out of order93

Rural Operator91

Long Distance Operator0

Chief Operator3417

Local General Office 5th St SE3490

Manager's Office3492

Alberta Junk & Auto Wrecking Co L Lesk 322

S Railway St2789

ALBERTA LINSEED OIL COMPANY LIMITED THE

9th Ave SE...2206

W A Church Manager's res3348

Geo E White Secy res2470

Allan Robert res 412 5th St3055

Allan T G res 244 9th St S3105

Allardyce Thomas res 957 5th St3668

Allen E G res 318 Belfast St2173

Allen H res 965 4th St SE2671

Allen Kenneth res 337 10th St.....3032

Allen M H res 452 8th St SE2748

Allison L res 27 5th St SW2368

Altin John Italian Groceries 505a N Railway St...3954

American Cafe Jim Funk S Railway St2751

Amos E res 127 12th St3833

Anderson A J res 519d 5th Ave3172

ANDERSON INSURANCE AGENCY

Huckvale Blk 668 3rd St2481

Chas Anderson Mgr res 335 1st St SE3434

Anderson Henry G res 535 2nd Ave NE3726

ANDERSON SERVICE STATION

Battery Service 422 S Railway St2297

G G Anderson Prop res 825a 2nd St2397

Ansley Eric C res 437 6th St2366

Armouries 3rd St3368

Armstrong Dr B C Phys & Surg 826 2nd St SE...2555

Armstrong Dr B C res 118 2nd St SW3884

Armstrong W H res 17 View Court3807

Armstrong Walter G res 121 4th St.....2309

Armstrong Wm res 555 Aberdeen St.....3940

PATTISON FUNERAL HOME

(FORMERLY PATTISON & WILSON)

FUNERAL AND AMBULANCE SERVICE

PHONE

2214

535 THIRD STREET

AGENTS FOR MONUMENTS

PHONE

2214

MEDICINE HAT

Ashburner E res 110 8th St NE.....	3488
Ashley W S res 532c 4th Ave.....	3683
Assiniboia Beauty Parlor Mrs E Williams	
Basement Assiniboia Hotel.....	2071
Assiniboia Hotel 3rd St SE.....	2056
ASSINIBOIA MUSIC CO LTD	
642 2nd St.....	2642
H T W Forster Mgr res 443 Aberdeen St.....	2213
Atkins A res 730 3rd St.....	3565
Atkinson G res 442 12th St.....	3146
Attrill F res 872a 4th St.....	3895
Austad T res 221 5th St.....	3848

B

Bain Jas res 538b 6th Ave.....	2508
Baird George res 22 View Court.....	2688
Baker Mrs Amy res 541 7th St.....	3836
Baker Herbert res 520b 6th Ave.....	3698
Baldwin W H res 230 5th St.....	2708
BANK OF MONTREAL 616 2nd St.....	2004
Manager's res 5 2nd St SW.....	2018
Bannan William T res 543 Cambridge St.....	2335
Bannan William T res 543 Cambridge St.....	3801

BANNAN & PARKER Real Estate
Rental & Insurance CPR & HB Co's Agents

560 2nd St.....	2779
Barnes J K res 332 5th St.....	2247

BARRIE WM Plumbing & Heating

312 4th St SE.....	3122
Barron B res 20 Diana Court.....	3772
Barton G res 610 Parkview Drive.....	3397
Bassett Mrs A J res 816a 4th St SE.....	3747
Bateman H H res 128 1st St NE.....	3578
Bayne David res 341 Belfast St.....	3319
Beaton John R res 60 9th St N.....	3471

BEAVER (ALBERTA) LUMBER

LTD cor 6th St & S Railway.....	2351
A Rollo Local Mgr res 16 4th St.....	3622
George Kinnaird res 1141 Elm St.....	3860
Becker R C res 210 1st St SE.....	2086
Begg W A KC Becker Blk.....	2105
Begg W A res 14 2nd St SE.....	2291
Bell A W res 390 Aberdeen St.....	2372
Bell E A res 537 7th St.....	2729
Bell J res 241 3rd St.....	3743

BELL J A AGENCY THE

Insurance & Financial Bkrs 643 2nd St SE.....	2728
Bell J A res 130 2nd St SW.....	2690
Bell J T res 359 4th St SE.....	2290
Bellamy Jack A K res 53 2nd St SW.....	3705
Benner's Cartage H C Leinweber rear 619 N Railway St.....	3455
Bennett W B res 851a 4th St SE.....	2515
Beny Charles Jr res 169 5th St.....	2785
Beny Roy res 463 9th St.....	2569

BENY & SON LTD 410 South

Railway St.....	2009
Buick Pontiac Oldsmobile & Chevrolet Sales & Service	
Authorized Duco Refinishers	
Bergman J T res 404 Aberdeen St.....	3209

BEVERIDGE J C LTD Furniture

620 2nd St SE.....	2226
Beveridge J C res 340 2nd St SW.....	3931
Biggs George A res 610 Spencer St.....	2316
Bishop Miss A C res 3 Montgomery Apts.....	2125
Bishop M C res 845 1st St.....	2014

BLACK HARDWARE LTD THE

656 2nd St SE	
Store.....	2456
General Office.....	3126
R C Black Mgr res.....	2588
Black R C res 275 3rd St SE.....	2588
Blackburn Rev M S res 258 1st St.....	3619

BLACKSTOCK G M Barrister

Royal Bank Chambers 3rd St.....	2404
Blackstock G M res 37 9th St.....	3808
Blackstock Miss M O res 53 Aberdeen St.....	2175
Blair Slim Taxi S Railway & 2nd St.....	2727

BLANCHARD C S KC Law Office

6 Hull Blk.....	2950
Blanchard C S res 25 2nd St SE.....	2355
Blossom Mrs W E res 102 4th St.....	3551
Bomford E S res 813a 4th St SE.....	2607
Bond Roy O res 488 10th St SE.....	3640
Botter's News & Fruit Store 664 3rd St.....	2044
Bowker P C res 138 9th St N.....	2591
Bowman Mat res 517 F Allowance Ave.....	3937
Boyd Mrs Oliver res 311 2nd St SE.....	2090
Boyd R S res 168 4th St SW.....	2716

BOYD & REID Wholesale & Retail

Tobacconists 222 South Railway St.....	2402
Boylan J F res 506 Aberdeen St.....	3161
Boylan John H res 539 Dundee St.....	2289

BOYLAN'S DRUG STORE

cor 6th Ave and 3rd St.....	2202
Bradley's Tire Shop 310 S Railway St.....	3874
Brier H res 519 5th St.....	3601
Brigham Howard B res 485 7th St.....	2914
Bristow J E Electrician 871a 3rd St.....	2136

BRITISH AMERICAN OIL CO

LTD Industrial Site.....	3112
Bromley R E Welding Shop 692 S Railway St.....	3142
Brough R B res 379 5th St.....	3773
Brown M res 543 1st St.....	3563
Brown Wm res 11 8th St.....	3401
Browne Mrs M res 43 Division Ave.....	3818
Browning E F res 437 10th St.....	3213
Buchanan W H res 442 5th Ave.....	3029
Bullen Mrs R res 421 6th St SE.....	3383

BULLIVANT ISAAC Shoe Store

216 South Railway St.....	2480
Bullivant Isaac res Prospect Drive.....	2539
Burford F G res 62 3rd St NE.....	3907
Burns A P Planing Mills 1st St SE.....	2229
A P Burns res 538 1st St.....	3341
Burns T A res 234 Aberdeen St.....	3739
Burton Wm A res 267 2nd St.....	2288
Burwash T A res 44 4th St SW.....	2488
Butchart R G res 396 Belfast St.....	3433
Butcher Rev J F res 623 4th St.....	2091
Butler E S Ladies' Ready-to-Wear 6th Ave.....	2696
Butler E S res 124 4th St SW.....	3795

C

Cairney J res 1134 Ross St.....	2073
Calder Robert res 478 8th St.....	2656

CALDWELL G A Decorator & Sign

Painter 426 4th St.....	3153
Caldwell G A res 436 4th St SE.....	2767

CALGARY HERALD Local Agent

Earl R Gilmour 542 9th St.....	2979
Callbeck A A res 26 4th St.....	2776

CAMPBELL DUNCAN Plumbing &

Heating 505a 4th Ave.....	2440
Campbell Duncan res 415 7th St.....	2440
Campbell Dr W C Physician & Surgeon Office 826 2nd St SE.....	2030
Campbell Dr W C res 4 5th St SW.....	3618

FOR LONG DISTANCE RATES TO ALL PARTS OF THE WORLD

SEE PAGES 7 TO 11 AT FRONT OF DIRECTORY

CANADA LAND & IRRIGATION

GO LTD Huckvale Blk.....	2428
D W Hays Gen Mgr res 36 1st St.....	2512
J D Fairless res 329 9th St.....	3514
Elliott G MacDonald res 77 4th St SW.....	3912

CANADIAN BANK OF COMMERCE

THE 2nd St & 6th Ave.....	2026
Manager's Office G J McRae.....	3175
Manager's residence.....	2035
Canadian Greenhouses The Geo A Rabb Prop Elm St & London Ave.....	2704
Canadian Legion Club 2nd St.....	3135
Secretary's Office.....	3924
Canadian Pacific Express Co Office CPR Station	2301

CANADIAN PACIFIC RAILWAY

Information re Passenger Trains.....	{ 2406 3706
GENERAL OFFICE—	
Superintendent G J Fox.....	2426
Chief Clerk J M Gilmour	
Assistant Chief Clerk T A Montgomery.....	2442
Asst Supt W Thomas	
Asst Supt J A Panter	
Division Master Mechanic J W Jackson	
Store Keeper's Office.....	3330
Division Engineer W L Codrington.....	2587
B & B Master J B McTaggart	
Yard Office.....	2127
Locomotive Foreman (Shops).....	2427
Car Foreman.....	2058
PASSENGER DEPARTMENT—	
Ticket Office Rail & Steamship E Schmid.....	2406
Ticket Agent	
Baggage Room.....	3706
FREIGHT DEPARTMENT—	
Freight Agent F H Sproule.....	2381
Freight Office General Information for Rates etc.....	2106
COMMERCIAL TELEGRAPH—	
Telegraph & Cable Office S Railway & 2nd St	2254
Manager's Office C D Hatch.....	3852
Canham W R res 538 Bank St.....	2387
Cann Rev A Willis res 45 8th St.....	3532
Cantolini Hotels Ltd 5th St.....	3154
Carbert J A res 227 1st St SE.....	2208
Carle A B res 819 3rd St.....	2233
Carle's Taxi Chamber of Commerce Bldg.....	2233
Carr F S res 222 4th St.....	3464
Castle J res 1028 Braemar St.....	3875
Castree H res 826 12th St.....	3501
CAWKER E M Druggist cor South Railway & 2nd St.....	2178
Cawker E M res 520 Cambridge St.....	2132
CECIL HOTEL D E Fraser Mgr 4th St SE	2928
Central Canadian Greyhound Lines J Briggs Agt Huckvale Blk.....	2101
CENTRAL GARAGE Ford & Caterpillar Service 539d N Railway St.....	3454
Chacaleas Nick res 861a 4th St.....	3395
CHAMBER OF COMMERCE Cor S Railway and 2nd St.....	2327

Chaseley J H Mgr Bank of Montreal res 5 2nd St SW.....	2335
---	------

CHEVROLET SALES & SERVICE

Beny & Son Ltd 410 S Railway St.....	2009
Church Geo D res 29 10th St.....	2571
Church W A res 112 1st St SW.....	3348
City Cafe 403 N Railway St.....	2329

CITY OF MEDICINE HAT

Mayor's Office City Hall.....	3030
City Clerk F Blackburn City Hall	
Treasurer's and Tax Office City Hall.....	2326
City Treasurer and Comptroller H J Noble	
City Probation Officer.....	3947
Engineer's Office City Hall.....	2726
City Engineer E Ashburner	
Purchasing Agent Wm Buttrey City Hall	
Electric Dept F E Rathwell	
Police Dept Capt J M Taylor Chief City Hall.....	2380
Capt J M Taylor res.....	3552
FIRE HALL (Fire Alarm only) City Hall.....	3535
Fire Hall (General Use only) City Hall.....	2992
Gas Dept.....	2665
Health Dept.....	2558
Electric Sub Station.....	2503
City Relief Office Sec Miss M A Carson.....	2912
City Relief Officer Miss M A Carson res 8 Connaught Apts.....	2769
Isolation Hospital Powell Sub-division.....	3629
Hillside Cemetery (Call 91 and ask for Rural 202)	
E Ashburner City Engineer res 110 8th St NE	3488
Hugh McLaughlin Public Works Foreman 514c Princess Ave.....	3920
F E Rathwell City Electrician res 228 Aberdeen St.....	3494
W E Hatcher Fire Chief res 513 1st St.....	3838
T J Shepherd Gas Supt res 345 4th St.....	2087
Municipal Airport—(Call 91 and ask for R204)	
City Pound 722 2nd St SE.....	3303
Clark James res 743 1st St SE.....	3742
Clarke Joe B res 418 Dundee St.....	3506
CLASH GEORGE A Groceteria 219 6th Ave.....	2123
Clay R A res 1121 4th Ave.....	2450
Clow A B Barrister & Solicitor Dominion Bank Bldg.....	3756
Clow A B res 506d 6th Ave SE.....	2340
Cobb Miss E res 1 Montgomery Apts.....	3973
Cockburn Mrs S res 734 9th St.....	2976
Codrington W L res 220 1st St SW.....	2684
Collier George res 323 9th St.....	3266
Collins W res 835a 2nd St.....	3268
Colter D A res 128 8th St NE.....	3160
Colter J C res 860 3rd St.....	3789
Congdon B A res 350 7th St SE.....	3162
Connaught Golf Club 13th St.....	3803
Conner Nat res 47 2nd St N W.....	3536
Connolly A res 53 7th St.....	3670
Connor J W res Fewings Apts 247 2nd St.....	2396
COOK A B Jeweller & Optician 645 2nd St SE.....	2378
Cook A B res 17 4th St SE.....	3866
Cook Mrs Maude res 521 Dundee St.....	2543

Cook's Garage W B Cook Cambridge St	2948
Cooper Miss Beatrice res 9 1st St NE	2548
Cooper Earl E res 233 1st St SE	2395
Cooper Miss Ivy D res 337 4th St	3363
Cope E L Plumber & Tinsmith 523 3rd St	3448
Cope E L res 410 Dundee St	3583
Cory M A res 239 1st St SW	2670
Cosens H P res 367 2nd St	2234

COSENS PHARMACY LTD 628 3rd St

St	2925
Cosmopolitan Hotel The T Bassett Prop South Railway St	2052

Coursey H W res 430 7th St	2649
Court House—(See Provincial Government)	

Court J E res 50 4th St SE	2186
Cousins-Elliott Ltd Bonds & Insurance 217 6th Ave	3347

Cousins Wm res 271 1st St SE	2084
Cove H J res 931 Balmoral St	3951

Cox H W D res 453 7th St SE	2955
Cox Rev J F res 248 2nd St	2103

Crawford R res 358 Cambridge St	3371
Crawford W res 9 1st St SW	2016

Crockett James res 368 1st St	2651
Crockford Geo H res 306 3rd St	2554

CRYSTAL DAIRY LTD T A Burwash Mgr 233 5th St

Ray Towle Engineer res	3672
Cunliffe R T res 506 Belfast St	2050

Cunnington J res 54 3rd St SW	2652
Currie Miss Annie res 24 View Court	3256

Currie W M res 270 9th St SE	3310
Customs Canada Collector of Customs	2567

Cuyler A res 55 9th St	2525
Cypress Club Club House 6th Ave SE	2179

D

Daniel J C res 222 Belfast St	3375
Darley D B res 26 1st St	3608

DAVE'S MEAT MARKET 634 3rd St 3234

Davidson R B res 56 Division Ave	3890
DAVIDSON R B Barrister & Solicitor 9-10 Hull Blk	3431

Davies J E res 173 2nd St SW	2927
Davies W A res 69 4th St SW	3463

Davis H Norman res 346 3rd St SE	2560
Davis H O res 245 8th St	2024

Dawkins W S res 355 7th St SE	2916
Dawson Wm res 541 Dundee St	3574

DeCoursey Miss Hazel res 963 Braemar St	3537
Dederer's Grocery & Meat Mkt 642 7th Ave	3222

Delong W J res 815 7th St SE	3046
Devlin W J res 57 4th St SE	2465

Dick A W Govt Boiler Inspector Court House Bldg	3572
Dick A W res 522c 6th Ave	2905

DISTRIBUTORS LTD S Railway St	2524
DIXON DR HOWARD C Phys & Surg 234 1st St SE	3062

Dixon John res 321 4th St	2534
Dixon S res 53 11th St N E	3577

Dixon's Radio Service 213 N Railway St	2483
Doadt D L res 264 Aberdeen St	3382

DOMINION BANK THE W S Ashley Mgr 3rd St & 6th Ave	3663
DOMINION FRUIT LTD Wholesale Fruit & Tobacco Maple Ave & Queen St Office	2929

Warehouse	2939
Donaldson Mrs J res 744 4th St SE	2759

Douglas J F res 69 4th St SE	3918
Douglas J W res 220 9th St SE	3592
Downing E res 378 1st St	2938

DOWSON E N 530 2nd St

Commercial Printing & Loose Leaf Supplies Dowson E N res 55 2nd St SE	2768
Driscoll M res 1035 Ross St	2408

Dryden J G res 317 Prospect Drive	3806
DUGGAN H O Stocks & Bonds 562 2nd St 3144 Duggan H O res 443 1st St SE	3510

Dunn Dick res 537 Aberdeen St	2765
Dunn George A res 535 Belfast St	3077

Dunn Robert res 332 Aberdeen St	3713
Durnin B D Service Station Texaco Products Cor 1st St & 6th Ave	3070

Du Russel W res 855 3rd St	2452
----------------------------------	------

E

Ednie A H res 512 10th St	3207
Eeles Mrs L E res 346 1st St NW	3845

Elder A T res 1164 Yuill St	3458
Elder Dr G G Eye Ear Nose & Throat Office 826 2nd St SE	2555

Elder Dr G G res 105 2nd St SW	3080
Elder Thos res 56 5th St	3567

Electric Cleaners & Dyers Bert Powers 561 3 St	3131
Electric Stores City Hall	2665

Elite Cafe 606 3rd St	3476
Ellerton E G res 5 View Court	3653

Elliott J Tailor South Railway St	2931
Elliott Wm M res 138 3rd Ave	2474

Elliott's Barber Shop 210 S Railway St	2349
Ellis W H res 460 Cambridge St	3281

Embree Geo W res 539c Maple Ave	2635
Emes Roland res 520 Aberdeen St	3558

EMPIRE MEAT MARKET THE

A H Blaeser 626 2nd St	2466
Employment Service of Canada Alberta Govern-ment 120 South Railway St	2222

English James res F-Hull Blk	2903
Esplen M res 536 Dundee St SE	2241

Ever Ready Transfer E Warham Prop 968 Braemar St	2453
Excelsior Life Insurance Co B Thompson Dist Agent 217 6th Ave	2988

F

Fairless J D res 329 9th St	3514
FAMILY GROCERY W N Taylor Prop 1040 7th Ave SE	3252

Fawcett J G res 235 8th St	3435
Ferrell S M res 1029 Dominion St	3130

Fewings E J res 247 2nd St SE	2107
Fillingham W A res 511 Dundee St	2725

Finch A G res 549 3rd St	3441
FIRE HALL (FOR FIRE ONLY) Fire Headquarters	3535

FISH MARKET THE 615 3rd St	3442
Fitzgerald J res 525 6th St	2760

Fitzpatrick Rev. F M res Altwana	2265
Flath Mrs W W res 315 4th St	3262

Fleming W J res 326 7th St	3109
Fleming W T res 506 9th St	2361

FLEMING W T CO THE Ladies' Ready-to-Wear 630 2nd St SE	3720
Fleming's Music House Royal Bank Bldg.	2068

Flynn A E res 489 8th St	3180
Flynn L E res 252 8th St	2520

Foley P F res 508c 6th Ave	3780
Fooks E J res 514 Dundee St	2347

A BUSINESS EXTENSION TELEPHONE

COSTS 5 CENTS A DAY

A RESIDENCE EXTENSION TELEPHONE

COSTS 2½ CENTS A DAY

FORD SERVICE GARAGE Central

Garage 539d N Railway St	3454
Forster H T W res 443 Aberdeen St	2213
Fowler Miss M res 510 8th St	3372
Fox G J res N Railway St	3246
Frank's Meat Market Cor Maple Ave & 5th St	3827
Fraser A L res 158 7th St	2486
Fraser W A Plumber 831a 3rd St	2144
FREEDMAN'S Grocery Flour & Feed City Market	2531
Funnell Wm res 1020 Queen St	2013

G**GAINSBOROUGH STUDIO THE**

George Brown Photographer 651 2nd St	3305
Galloway David res 976 Yuill St	2786
Gallup Mrs G N res 1038 Ross St	2674
Galonski M res 1147 Bridge St	3017
Gant A res 477 3rd St	2336

GARBUTT BUSINESS COLLEGE

24 Becker Blk	2394
Gargett Mrs Edward res 212 Spencer St	2715
Garland Miss M res 217 Aberdeen St	3374

GAS CITY PLANING MILLS

A P Burns Office 1st St SE	2229
Gerow Mrs Emma res 30 9th St SW	3810
Gerow's Barber Shop & Beauty Parlor 639 2nd St SE	3051
Gershaw Dr F W Phys & Surg Office 826 2nd St SE	2030
Gershaw Dr F W res 361 1st St	3614

GIBSON C V Groceries 401 Aberdeen St..

Gibson C V res 251 11th St	2350
Gibson Jas res 366 6th St	2583
Gillis G A res 526c 5th Ave	3423
Gilmour J M res 542 9th St	3680
Glaze F res 73 8th St	3938
Glennie Mrs E res 104 11th St	2113
Glock Mrs J J res 232 4th St	3880
Goldie Hugh res 519e Allowance Ave	2956
Goode W M res 138 2nd Ave SE	3060
Gordon Andrew res 69 1st St NW	2987
Gordon R A res 753 Spencer St	3796
Government Liquor Store 531 N Railway St	2360
Graden W R res 876 Braemar St	3243
Graham A H res 406 Prospect Drive	2653
Graham Thomas res 526c 4th Ave	2662

GRAHAM'S GROCETERIA

Store No 1 544c Princess Ave	2628
Store No 2 395 Aberdeen St	3638
Grain Inspector's Office 203 Huckvale Blk	3366
Grant F J res 444 8th St SE	3546
Gray Violet res 423 1st Ave NW	2682
Gray W H res 8 Aberdeen St	2732

GRAYSON FEED STORE Mulligan Blk

6th Ave	3657
Greene Judge Geo W res 77 1st St SW	3145
Gronberg C E Taxi S Railway & 2nd St	2345
Gunn James res 5 Gunn Apts 3rd St	2324
Gust Mrs L E res 439 5th Ave	3427
GUST S E STORES THE 626 3rd St	2502
Gustafson S R res 819a 5th St	2730

H

Hall F res 121 12th St	3148
Hall W res 364 10th St SE	2002
Hamilton J W res 448 Division Ave	2657
Handicraft Shop R Walker & A Whittred rear of Library	2393
Hanna F W res Assiniboia Hotel	2056
Harding Mrs W F res 677 7th Ave	3132
Hardy J B res Erin Lodge 1st St	3582
Hardy R H res 759 4th St SE	3038
Hargrave Dr J C res 156 3rd St NE	2011
Hargrave James res 114 3rd St NE	2120
Harkness Miss J res Fewings Apts 247 2nd St	2424
Harper W J res 864 3rd St	3631
Harris A G res 140 6th St	2509
Harrison R W res 1015 3rd Ave	3778
Harrison William res 235 3rd St	2713
Hat Grocery M L Wright Prop 507b Allowance Ave	2012
Hatch A J res 503 5th St SW	2958
Hatch C D res 384 10th St	3870
Hatcher W E res 513 1st St	3838
Hatley Mrs S res Porter's Hill	2673
Havard R E res 340 5th St	3205
Haworth R E res 507 Dundee St	3930
Hawthorne A C Men's Clothing 234 S Rly St	2523
Hawthorne A C res 253 3rd St SE	2088
Hawthorne Don S res 21 View Court	2766
Hayes G A res 11 View Court	2770
Hays D W res 36 1st St	2512
Health of Animals Branch Office 2 Post Office Blk	2305
Heath H J res 306 7th St	2263
Hedley Shaw Milling Co Ltd—See Maple Leaf Milling Co Ltd	
Hedlund Mrs E res 225 3rd St SE	2314
Henderson W W res 520 Belfast St	3522
Hewitt J J res 360 1st St	2166

HEWITT & BLACK—See Black Hardware Ltd The

Hewitt's City Transfer Baggage Co 1253 Elm St	2507
Hight H P res 205 2nd St SE	2343
Hill John res 216 7th St	3746
Hitchcox A res 821 3rd St	2196
Hobday A res 829a 5th St SE	2356
Hodges E S res 233 2nd St SE	3891
Holley Ernest res 554 11th St	3763
Holmes Miss Iva G res 411 2nd St	2248
Homer M F res 362 7th St	2163
Hooper Mrs A W res 1122 Ross St	3019
Hooper Albert res 43 9th St N E	2245
Hoover G A res 519 Belfast St	3759
Hosie Miss Bessie res Elm St School House	2115

HOSPITALS

General Hospital 2nd St SE	2126
Maternity Hospital Ash Ave	3342
Hotson G E res 460 10th St	2082
Houlden A H res 320 8th St SE	3254
Howey Chas H res 265 6th St	3171
Howson Geo res 112 2nd St SW	2966
Hub The Harry Fefferman 228 S Railway St	2457
Huckvale W res 251 1st St SE	2008
Hughes Albert res 605 1st St	3450
Hughes M res 406 11th St	3424
Hull Robert W res 867a 4th St	2070

Hulme T res 310 12th St	3559
Hutchinson T res 50 2nd St SE	3274
HUTCHINSON T SADDLERY	
CO LTD THE 623 3rd St SE	2064
Hyde Miss Willena res 1005 Balmoral St	2496

I

I X L Dairy F J Harris Crescent Heights	3744
IMPERIAL OIL LIMITED F Glaze	
Agent Industrial Site	3003
F Glaze Agent res	3938
Industrial Arc Welding Works Puralm Sub- Division	3181
Ingram T N res 488 8th St SE	2124
International Harvester Co O E Nesting Agt 746 2nd St	3015
Ireland H S res 861 1st St SE	2388
Ireland H W res 333 2nd St SE	2207
Isolation Hospital Powell Sub-division	3629
Isom Walter A res 176 3rd St	3071

J

Jackson Mrs E res 130 5th St SW	2984
Jackson J W res 250 5th St SE	2320
Jam Chong Market Gardener 1st St NW	3667
Jardine Miss Beatrice res 507 10th St	3987
Jimlen Barber Shop & Beauty Parlor 511a 4th Ave	2001
Johnson Mrs C res 838 1st St	3595
Johnson Claude E res 111 11th St	3058
Johnson Percy res 382 13th St	3841
Johnson R T res 429 8th St SE	2742
Johnson Wardin res 522a 3rd Ave	3580
Jones Mrs Roy res 278 2nd St	2542
Jones S E res 305 2nd St	2277
Jordan H E Snappy Tailors 664 2nd St	3226
Jordan J S Real Estate & Ins 526 2nd St	2940
Jordan J S res 130 5th St SW	2984
Jordan Violet res 1073 5th St	2743

K

Kane J F res 165 8th St NE	3023
Keating R E res 12 5th St SW	3817
Keith Mrs John res 808 2nd St	2365
Kennedy Robert Painter & Paperhanger 438 Cambridge St	3468
Kennedy W A res 416 Belfast St	3963
Kenny R S res 27 1st St SW	2332
Kent J C res 405 5th St	2983
Kent R H Insurance 528 2nd St SE	3553
Keohane J res 554 Cambridge St	2687
Ker J H res 571 10th St SE	3832
Keyes C M res 521 Cambridge St	3819
Killins R W res 815 8th St SW	3195
King E res 62 4th St NW	3547
King John A res 352 9th St SE	3257
Kinnaird Geo res 1141 Elm St	3860
Kinnaird Thos res 8 Western Can Lbr Yard	3682
Kinnaird's Transfer 513c North Railway St	3656
Kirkness A A res 759 5th St	2473
Knight Mrs E res 438 11th St SE	2423
Knight Thos W res 347 Aberdeen St	2438
Knight W res 237 Aberdeen St	2793
Knights of Pythias K.R. & S. A N Atha 404 8th St	2695
KNOWLES MAURICE Electrical Contr 843a 4th St	2118
Krauss Mrs F res 137 1st St SW	3332

L

Laidlaw Lorne res 24 1st St SW	2933
Laidlaw Niblock & Stone Barristers Bank of Montreal Chambers	2128
Laing D V res 837-A 3rd St	3729
Lait J J res 848 4th St	3346

LAKE OF THE WOODS MILLING

COY LTD South Railway St	2155
Manager's Office	2255
C A Moir Manager res	2655
T N Ingram Accountant res	2124
J H Lawrence Head Miller res	3158
La Marsh Mrs I Millinery & Ready-to-Wear 217 6th Ave	3274
Lamb Andy res 212 13th St	2589
LANG BROS LIMITED Insurance Bonds & Loans Burns Block 651 2nd St SE	3554
Lang Hector res 538 7th St SE	3658
Lauder W res 3 1st St NE	3952
Lauder W G res 1075 Dominion St	3687
Lawrence Basil res 1168 Balmoral St	2739
Lawrence J Huver res 550 10th St	3158
Leahy B res 421 11th St S	3293
Lem Blick Barber Shop & Beauty Parlor Huckvale Blk	2414
Leong Bill Market Gardener 921 7th Ave	2590
Le Page A J res 125 1st Ave SW	2712

LE PAGE STORE THE General Mer-
chants 640 3rd St

Lesk's Furniture Exchange 317 6th Ave	3664
Levinson Joe L Raw Furs & Hides 314 South Railway St	2160
Lewis Harry res 436 2nd St SE	3378
Lindsay Mrs M res 492 12th St	3437
Linfield C A res 639 9th St SE	2552
Lister C E res 544b 6th Ave	3140
Little F G res 314 7th St	3666
Lockwood A S res 220 4th St	2443
LONDON LIFE INSURANCE CO W G O Rose Rep Dominion Bank Bldg	3531
Lorraine J res 747 3rd St	3381
Lovett W S res 6 12th St	2753
Lutes W A res 116 5th St SE	2741
Lynch Miss J res Puralm Sub-division	2926

M

Mac's Cigar & News Stand 615 2nd St	2460
MacBean Mrs L W res 528 6th Ave	3896
MacCharles Dr D N Phys & Surg Office 826 2nd St SE	2030
MacCharles Dr D N res 874 2nd St SE	2029
MacDonald C A res 875 3rd St	3217
MacDonald Duncan res 150 2nd St NE	2762
Macdonald Elliott G res 77 4th St SW	3912
MacDonald Miss K res 820 1st Ave	3762
MACDONALDS CONSOLIDATED LTD Wholesale Grocers N Railway St	
Sales Dept	2745
Shipping Dept	2744
Manager	2080
MACGREGOR A Cartage & Transfer 38 6th St SW	3690
MacGREGOR ALEX Barrister 208-209 Huckvale Blk	3829
MacGregor Alex res 430 4th St	3491
MacGregor J res 866 4th St	2078
MacKenzie N R res 359 Cambridge St	3602
Mackinlay Mrs A res 11 Montgomerie Apts	3839
MacKinnon J D res 824 4th St	2989
MacKinnon M res 504 11th St	3260
Macleod—See also McLeod	
MACLEOD DR J S Phys & Surg Office 419 1st St SE	3365
MacLeod N C res 318 Aberdeen St	2782
Maier L A res 141 2nd Ave	3116
Malhiot J E res 266 7th St SE	3325
Mallard N Dental Laboratory 519 2nd St	2422
Manders Mrs Ida res 416 Belfast St	3963
Manning T W res 817a 3rd St	2348

PATTISON FUNERAL HOME

(FORMERLY PATTISON & WILSON)

PHONE

2214**FUNERAL AND AMBULANCE SERVICE**

AGENTS FOR MONUMENTS

PHONE

2214

535 THIRD STREET

MEDICINE HAT

MAPLE LEAF MILLING CO LTD

Industrial Site	2831
General Office & Order Desk	
Accountant J Otto	
R G Butchart Manager	2833
J Elder Asst Manager	3360
R G Butchart Mgr res	3433
Marr C M res 334 11th St	2680
Marsh F Garage & Auto Wrecker 1221 7th Ave...	2031
Marsh Plumbing & Heating Ltd 650 3rd St SE...	3655
J P Marsh res 482 10th St	3561

MARSHALL'S BOOK STORE General

Stationery Office and Legal Supplies 621 2nd St	3633
Martin S G res 96 3rd St	3797
Martyn C D res 49 8th St N	3483
Masonic Hall Lodge Rooms 4th St SE	2377
Massey-Harris Co Ltd 329 N Railway St	2405
Maternity Hospital Ash Ave	3342
Mathews Harry res 437 1st Ave NW	3208
Maxwell T A res 310 Ash Ave	2010
Mayberry T R res 1031 5th St SE	2417

MAYNARD'S AUTO TRANSFER

Herbert Maynard Prop 488 11th St	3165
McAffer R res 811a Braemar St	3167
McCaig Lorne res 1028 9th Ave	3440
McCaig Wm res 743 12th St	2075
McCallum Norman res 358 8th St SE	3215
McCandie John res 536 Belfast St SE	3040
McCarter A res 120 9th St NE	2148
McCasin John E res 803a Braemar St	3091

McCOMB F J Electrical Contractor 655 2nd

St S E	2573
McComb F J res 924 Dominion St	3901
McCombs J A res 852-A 5th St SE	2359
McCombs W E res 839-A 5th St	3475
McCorkle J E res 25 10th St	2375
McCully Mrs J res 509 3rd St	2710
McDorman Miss Eva res 10 Diana Court.....	3556
McDougall A L res 361 9th St SE	3544
McEwen John res 350 Cambridge St.....	2152
McEwen Dr S F Phys & Surg Office 826 2nd St SE	2555
McEwen Dr S F res 550 Belfast St	3024
McGarry James Taxis 227 5th St.....	2943
McGee J G res 164 3rd St SW	3011
McGregor—See MacGregor	
McIntosh Geo res 1163 Balmoral St	3402
McKay T M res 852 2nd St	2382
McKEE DR E L Dentist 654 3rd St SE	3945
McKenzie Wm res 383 10th St	3626
McLane J W res 246 2nd St SW	2968
McLaren Miss Margaret res 922 5th St	2236

McLAUGHLIN-BUICK SALES &

SERVICE Beny & Son Ltd 410 S Railway St	2009
McLennan J W res 303 8th St	2317
McLeod—See also Macleod	
McLeod A res 422 5th St	2746
McLeod D W res 435 4th St	3467
McMann Mrs David res 558 4th St	2141
McMillan Harry res 219 5th St	3189
McNeely Mrs W W res 153 2nd St SW	3966

McNEILL ELECTRIC SHOP

A R McNeill 804 Balmoral St	2266
McNeill H res 420 Cambridge St	2755
McNichol Dr P H Dentist 640 2nd St	2180
McNichol Dr P H res 78 1st St	3955
McPherson's Barber & Beauty Parlor 407 N Railway St	2338
McRae G J res 375 2nd St S E	2035
McRae Stuart res 253 5th St	2639
McTaggart J B res 508c 5th Ave	2541
McWaine F res 1054 Yuill St	2618
Medalta Potteries Ltd Industrial Site	3585

MEDICINE HAT BAKING CO LTD

THE Cor 4th St & 3rd Ave SW	2501
W M Treece Mgr res	2189

MEDICINE HAT BRICK & TILE

CO LTD Industrial Site	2493
H J Sissons Mgr res	3090

MEDICINE HAT CLINIC 826 2nd

St SE	2030
Dr F W Gershaw	
Dr D N MacCharles	
Dr W C Campbell	
Dr G G Elder	2555
Dr S F McEwen	
Dr B C Armstrong	

MEDICINE HAT GARAGE 524 2nd

St SE	2379
Chrysler Plymouth Dodge & De Soto Sales & Service	
George Atkinson Mgr res	3146
Roy Keating Sales Mgr res	3817
Medicine Hat Golf Club—Medicine Hat.....	3191
Medicine Hat Golf & Country Club—Medicine Hat	2278

MEDICINE HAT GREENHOUSES

LTD Successors to Rosery Flower Co 10th Ave SE	2431
Manager Fred J Ware res Nights & Sundays	2330
Medicine Hat Ice Co E E Cooper Mgr Office 39 Division Ave	3702
Medicine Hat News Ltd The Business Office & Job Printing 6th Ave SE	2028
Editorial Office	3452

MEDICINE HAT STEAM LAUNDRY

CO LTD Office 873-A 2nd St SE	2005
Medicine Hat Trading Co 328 S Railway St	3811
Megley Michael res 1 Souch Blk 399 Aberdeen St	3844
Meier C C res 535c Allowance Ave	2980
Mellor Miss Winifred res 669 7th St	2522
Mennear Martin res 112 11th St Cres Hghts	2706
Meynell Mrs A res 1114 Queen St	2315
Michie Wm res 482 8th St	3590
Middleton Ed res 177 3rd Street	3950
Middleton J L res 436 Belfast St	3225
Milburn George res 40 8th St SE	3898
Millar Edgar J res 862 2nd St	2066
Millican J R res 506-A 6th Ave	2159

MILLS' GREENHOUSES T E Mills

Prop 1035 Yuill St	2227
Milne E L res 319 8th St SE	3264
Minor G H res 38 4th St NW	2601
Mitchell Jas res 504 1st St SE	2161
Mitchell Jas res Preston Mills	3129
Mitchell Miss M res 305 1st St	2516

Mitchell Miss Mary res 545 2nd St	2188
Moir Colin A res 553 5th St	2655
Mollard J E res 52 1st St SW	3336
Monarch Theatre Co Ltd 609 2nd St	2603
Monkley L res 512-C 6th Ave	3854
Monteith David res 330 8th St	3651
Montgomery Bert res 462 4th St	3960
Montgomery G E res 445 7th St	3002
Montgomery T res 17 9th St	3045
Moore E J res 837 4th Ave	2346
Moore Mrs Fannie W res 222 4th St	2165

MOORE J J & SON Furniture Store	
532 2nd St near Medicine Hat Garage.....	2787
H A Moore Mgr res 430 Cambridge St	2788
Moore Dr Milton L Dental Surg 644 2nd St	2627
Moore Dr Milton L res 613 5th Ave SE	3684
Morrison Fred res 732 7th St SE	2228
Morrison Helen T res 117 11th St	3134
Morrison Miss I Dry Goods 517a 4th Ave	3516
MORRISON DR J D Dentist 2nd St	3277
Morrison Dr J D res 203 2nd St	2568
Morrison James res 489 7th St	3169
Morrison M res 553 Cambridge St	2761
Morrison O J res Pottery St	3858
Morrison Vincent res 167 1st St SW	2139
Morrison W res 311 4th St	2922
Morrison's City Bakery 613 3rd St	3227
Morrow Rev J W res 414 1st St	2238
Moton Mrs E res 506b 6th Ave	3922

MUIR J E & CO LTD Investment	
Securities F C C Rubbra Mgr 8 Hull Blk	3001
Muir M res 536 Cambridge St NE	2235
Mulholland W res 342 8th St	3359
Mulligan T res 538-A 6th Ave	2053
Municipal Dist of Excelsior Royal Bank Bldg	2232
Munro J G res 1210 7th Ave	3750
Murphy P J res 60 5th St SE	2504
Murray A res 945 5th St SE	2526
Murray Charlie G res 414 10th St	3623
Mutual Life Assurance Co 4 Hull Blk	3933
Muxworthy R D res 37 1st St SW	2945
Mytton C res 137 3rd Ave	3692
My Wardrobe Cleaning & Pressing 565 2nd St SE	2505

N

Napier R M res 61 2nd St SW	3186
NASH-SIMINGTON CO LTD	
See Dominion Fruit Ltd	

National Fruit Co Ltd S Railway St	{ 2272
	{ 3569
National System of Baking 617 2nd St	2675
Nelson Gust res 387 5th St	3910
Nelson Mrs Robt res 203 N Railway St	3710
NEW CLUB CAFE 638 2nd St	3202
New Willard Battery Service T Enno 318 South Railway St	3957
New York Cafe 427 N Railway St	2575
New York Fur Exchange Joe L Levinson 314 S Railway St	2160

NEWS THE Business Office and Job	
Printing 6th Ave SE	2028
Editorial Office	3452
Niblock C W res 71 5th St SW	3486
Niblock W G res 377 4th St SE	2608
Nichol J H res 507 7th Ave S E	3484
Nicholas Peter res 515a 4th Ave	3388
Nichols L W res 160 8th St N	3182
Nicholson D res 57 7th St SE	3708
Nimmo G C res 160 3rd St SW	3685
Noble H J res 137 8th St NE	3979

NORRIE & FAWCETT LTD Farm Implements & Agents	
North Star Oil Ltd South Railway St	2668
Norris D A & Co Flour Feed & Auto Dealer 635 3rd St	3650

NORTH STAR OIL LTD Norrie & Fawcett Ltd Agts S Railway St	2668
Plant	2669

NOTT J JESSOP FUNERAL CHAPEL 321 5th St SE	2306
Ambulance Service	
Nott J Jessop res 76 3rd St SW	3306
Novak F res 234 4th St	3965
Nurcombe G res 116 1st St SW	3523

O

O'Connor E res 60 8th St N	2319
O'Connor Edward—Call Long Distance and ask Operator for O'Connor Exchange (Ranchville)	
Oddfellows' Hall Cor 3rd St & 4th Ave	3228
Odland O S res 6 Diana Court	2623

OGILVIE FLOUR MILLS CO LIMITED THE 9th Ave SE	3206
General Office and Order Telephone	
Accountant L Monkley	
Sales Dept C J Kent	
H Norman Davis Manager	2977
Grain Department E G Ellerton	2034
A Atkins Supt of Elevators	
Mill Office E Reilly Head Miller	3990
H Norman Davis Mgr res	2560
L Monkley Acct res	3854
E G Ellerton Grain Dept res	3653

OLDSMOBILE SALES & SERVICE	
Beny & Son Ltd 410 S Railway St	2009
Oliver F M res 202 1st St SW	3391
Oliver Martyn & Co Chtd Accts 20 Becker Blk	2519
Oliver W W Dry Goods 3rd St	3004
O'Mara F J res 505 Aberdeen St	3027
O'Rourke Mrs J R res 54 4th St SE	3168
Osborn W C res 939 Braemar St	3843
Osborne T R res 113 2nd St SW	2747

P

Pace W E res 5 8th St NE	3647
Panter J A (CPR) res 428 1st St	2592

PARK GARAGE Ed Middleton 645 1st St	2295
Park J A res 379 Belfast St	3867
Parker Capt W res 62 2nd St NE	3732
Parke H O res 67 9th St	2391
Parrish V W res 309 2nd St SW	2612
Patterson Dr J R Phys & Surg 816 2nd St	3627
Patterson Thomas res 1047 Queen St	2917
Patterson's Dairy Misses Patterson Props 524a 4th Ave	3302

PATTISON FUNERAL HOME Funeral & Ambulance Service 585 3rd St	2214
Patton F A res 415 Cambridge St	2924
Patton H S res 423 Cambridge St	2772
Patton Harold J res 530a 6th Ave	3328
Pauling G F res 206 Aberdeen St	3393
Penney Edwin L res 211 2nd St	3642
Pennington Mrs J res 429 12th St	3270
Perrin E F res 356 7th St	2448
Peterson Transfer & Truck Service 848 9th St	3969
Phillips S res 64 8th St SE	3350
Pickering C res 32 3rd St SW	3740
Pickering Dick res 327 3rd St	3405
Pickles M W res 121 2nd Ave	2323
Piegl Paul res 307 Aberdeen St	3410
Pingle Mrs C S res 64 Cosmopolitan Hotel	2182

**FOR LONG DISTANCE RATES
TO ALL PARTS OF THE WORLD
SEE PAGES 7 TO 11 AT FRONT OF DIRECTORY**

PINGLE DRUG & BOOK CO THE

627 2nd St SE	2006
Percy Yeo Mgr res 355 Belfast St	3013
Pingle G W Agency 4 Hull Blk	2666
Pingle G W res 806 1st St SE	3313

PINGLE MacKENZIE DRUG CO LTD

423 North Railway St	2667
Plotkin's Grocery & Meat Market 1152 Elm St	3443
Pollitt N T res 303 3rd St SW	2506

PONTIAC SALES & SERVICE

Beny & Son Ltd 410 S Railway St	2009
---------------------------------------	------

PORTER C B Garage Maple Ave & 2nd St SE

.....	2498
Porter C B res 61 9th St NE	3956
Porter R C res 205 1st St	2116
Porter R J res 4 Montgomerie Apts	3927
Porter's Machine Shop 690 S Railway St	3127

PRAIRIE CITIES OIL CO LTD

Service Station Cor 3rd St & 5th Ave	2454
Pratt R B res 838 4th St	3185
Preston George res 521 9th St SE	2585

PROVINCIAL GOVERNMENT**COURT HOUSE BUILDING**

Clerk of the Court's Office	2778
Sheriff's Office	2451
School Inspectors	2547
Boiler Inspector A W Dick	3572
Clinic Children's Welfare	3362
Issuer of Marriage Licences	2778
Judge Greene	3868
Lawyer's Room	3711
District Engineer A C Gardner	3170
Automobile Licences Miss Hughes	2644
Dept of Municipal Affairs P C Hepburn	2171
Purvis A R res 513 7th St SE	3609
Pushie W J res 776 3rd St S	3749
Pydee Mrs A res Porter's Hill	3312

Q

Quaill J J res 871 1st St SE	2036
QUEEN STREET GROCERY 976 Queen St	2998
Quinlan G H res 404 Belfast St	2709
Quinlan W C res 47 4th St SE	3639

R

Rae James M & Co Farm Implements & Electrical Goods 218 S Railway St	2918
Ready T V res 329 1st St SE	2678
Reburn R J res 143 3rd Ave	2032
Reed John H res 503 7th St	2613
Regent Billiard Room The 2nd St SE	3675
Reid D S res 27 4th St SW	2137
Reid J B res 69 9th St SW	3512
Reid Misses res 12a Hull Blk	2754
Reid W res 8 View Court	3081
Reilly A A H res 203 7th St SW	3311
Reilly E res 1104 Allowance Ave	2455

Reliable Western Cartage R G McDonnell 722 2nd St SE	3303
---	------

REVELSTOKE SAWMILL CO LTD

East Allowance	2153
J E McCorkle Local Mgr res 25 10th St	2375
Rex Cafe Kwong Lee 431 N Railway St	3236
Reynolds Geo res 70 7th St	2719
Rice R J res 375 1st St	3358
Richardson B B res 238 4th St SW	2198
Richardson Mrs C W res 121 1st St	3086
Richardson J B res 261 4th St SW	3479
RICHARDSON'S BAKERY 720 4th St	3233
B B Richardson res	2198

RICHARDSON'S MEAT MARKET

507a 4th Ave	2518
Riches P L F res 350 8th St	2913
Riley W res 146 2nd St NW	3094
Ritchie H O Beauty Parlor 18 Hull Blk	2923

RIVERSIDE BAKERY W K Smith Cor

3rd St & Division Ave N	2172
Roach A J res 322 12th St	3887
Robertson Thomas res 1235 Elm St	3725
Robinson James res 111 1st St SW	3482

ROBINSON JAS W Insurance & Farm

Loans 204 Huckvale Blk	2312
Robinson Dr John L Chiropractor 5 Hull Blk	3379
Robinson Miss Thelma B res 143 11th St	3515
Roche C M H res 219 1st St SE	3415
Rollo A res 16 4th St	3622
Ronnenberg L res 819 1st St	3173
Ronnenberg L W Oxy Welder 732 2nd St	3219
Rose Mrs W A res 537-B Maple Ave	3765
Rose W G O Office Dominion Bank Bldg	3531
Rose W G O res 352 1st St	3606

ROSEY FLOWER CO See Medicine Hat

Greenhouses Ltd	2431
Roxburgh W N res 250 Division Ave	3276

ROYAL BANK OF CANADA

C D Sanders Mgr 3rd St SE	2477
Royal Canadian Mounted Police Court House 1st St	2658
Royal Hotel Jno Read Prop South Railway St	2177

ROYAL OIL & SERVICE STATION

H E Staines Prop 3rd St	2333
Rubbra F C C res 4 Diana Court	3010
Rudd T E res 452 Cambridge St	3120
Russell L res 411 Allowance Ave	3985
Rutherford Wm res 544 Aberdeen St	3466

S

Sadler Mrs S R res 360 11th St	3428
SAFEWAY STORES LTD 3rd St	3686
St Therese Academy 7th St NE	3992
Salvation Army 949 Dominion St	3883
Samson C res 202 Spencer St	2328
Sanders C D res 106 3rd St	2353
Sanders Walter V res 404 1st St	3259
SAVOY CAFE 2nd St	2133
Scarlett F H res 49 8th St	3125
Scheffler Rev A H res 238 8th St SE	3847
Schmid E res 121 7th St	3101

Schneider Henry H Auctioneer 627 3rd St 2203

SCHOOLS

Medicine Hat School Board Office 3178
 Alexandra Public School 2318
 Alexandra High School 6th St SE 2527
 Connaught School 9th St SW 2392
 Earl Kitchener School 2nd Ave & 4th St 3420
 Elizabeth St School 11th St SE 3678
 Elm St School 5-G St SE 3528
 Montreal St School 4th St SE 2556
 Riverside School 2nd St W 3793
 Schram F H res 607 4th St 2784
 Scragg Rev E T res 459 4th St 2237
 Scudder Fred Grocer 541a Allowance Ave 3012

SERVICE GARAGE 746 2nd St 3015

SERVICE GROCERY Wm F Weiler
 Prop 339 N Railway St 3701

SERVICE HARDWARE LTD THE
 624 3rd St 2076

Sexton J res 261 5th St 2072

Shamrock Bottling Works Park Drive 2533

Sharland L A Fruit & Groceries 1113 Dominion
 St 2584

Sharp W J res 441 3rd St NW 3769

Shaw R C res 821 1st St 3214

Shepherd R F Auctioneer & Second Hand
 Furniture 639 3rd St 2705

Shepherd R F res 341 3rd St SE 3766

Shiels Robert res 816 1st St 3436

Shore M General Merchant 803 7th Ave 3809

Shore M res 803a 4th St 3908

Shore & Co Clothing Store 415 7th Ave S E 2528

Short S Barrister Dominion Bank Bldg 3531

Short S res 141 4th St SW 3272

Sibley Oliver res 307 7th St 3419

Simpson Dorothy Ladies' Hairdresser 403 4th St 2492

Simpson P M res 1124 Dominion St 2756

Sinclair E R res 322 4th St W 3279

Sinclair W W P res 957 Dominion St 2566

Singular James M res 367 7th St SE 2369

Sissons F O res 5 1st St SE 2110

Sissons Herbert J res 363 Cambridge St 3090

Slack Dr A E Dentist Porter Blk 2629

Slack Dr A E res 134 3rd St SW 2962

SLEMKO'S TIRE SERVICE 324 6th
 Ave SE 3882

J H Slemko Prop res 221 11th St 3646

SMITH DR ALLISON Dentist
 25-27 Huckvale Blk 3447

Smith Dr Allison res 284 6th St SE 2262

Smith Miss M res 525b 4th Ave 3846

Smith R D res 311 N Railway St 2212

Smith's Barber Shop & Beauty Parlor 669 2nd
 St 3123

Smithson W R res 433 Aberdeen St 2243

Snappy Tailors H E Jordan 664 2nd St 3226

Solly S F res 844-A 4th St SE 2439

SOUCH B F Optician and Druggist 399
 Aberdeen St 3218

Souch B F res 304 2nd St SE 2209

Sprague Mrs A res 9 Diana Court 2420

Sprague S W res 336 8th St SE 3539

Sproule F H res 226 1st St SE 3831

Squance J R res 341 8th St 2947

Staines H A res 113a 3rd St NE 3193

Staines H E res 278 7th St 3016

Star Meat Mkt Cor Allowance Ave & Queen St 2370

Steedman E R res 42 4th St 3840

Steeves Mrs M M res 545 Dundee St 2967

Stevens Walter B res 327 2nd St SE 3061

Stewart H res 429 1st St SE 2211

Stone E A res 41 2nd St SW 2250

Stone Maurice H res 29 2nd St SW 2246

Stone Mrs P D res 11 4th St SE 3862

Strobel E G res 769 3rd St 2287

Strobel E G res 509a 6th Ave 2281

Sturgess F Taxi 952 Braemar St 2112

Sutherland A res 261 Aberdeen St 3786

T

Tai Kong Greenhouse Co Industrial Ave 3232

Tall N res 444 4th St 3026

Tall's Limited Cor 6th Ave & 2nd St 3888

TAYLOR BROS Groceries Fruit etc 650
 2nd St SE 2151

A C Taylor res 218 2nd St SW 3416

S C Taylor res 225 1st St SW 3576

Taylor C R res 280 Prospect Drive 3244

Taylor D res 514d Woodman Ave 3297

Taylor E S res 471 10th St 3889

Taylor J H res 537c 5th Ave 3462

Taylor Capt J M res 170 9th St 3552

Taylor Thos J res 426 Prospect Drive 3033

Taylor Wm N res 852 11th St 2134

TEGO STORE

Operated by THE T EATON CO LTD

Information & General Office Cor 3rd St &
 6th Ave 2942

Eaton Groceteria & Hardware Dept 2949

Teel A res 646 S Railway St 2794

TEEL MEAT MARKET 503b Allowance
 Ave 2620

Terrill A J res 10 1st St SE 2663

Terry John res 640 7th Ave 3411

TEXAS CO OF CANADA LTD THE

Distbr Texaco Petroleum Products S Railway
 St 2022

Geo H Crockford Agt res 2554

Service Station B D Durnin Cor 1st St &
 6th Ave 3070

Thirlwell Tom res 427 7th St SE 3028

Thomas W res 245 1st St 2140

Thompson Mrs H D res 731 1st St 3250

Thompson's Grocery Flat Iron Bldg 3155

Thomson D D res 49 9th St 3216

Tobin Mrs Mary res 385 4th St 3339

Tom W H res 544 Cambridge St 2734

Tom's News Stand T G Allan 620 3rd St 2270

Tombling A res 438 Cambridge St 3468

Tomlinson W res 961 Balmoral St 3035

Towle Ray res 403 2nd St 3672

Treece W M res 59 1st St S W 2189

Trotman A G Acct Auditor & Ins Royal Bank
 Bldg 3731

Trotman J L res 535 11th St 3364

Trotman James L Dist Mgr Mutual Life Assurance
 Co 4 Hull Blk 3933

Tufford J D Tailor 439 N Rly St 3036

TURNER N Plumber & Gasfitter 466 11th
 St 2445

TURNER W M O Rental and Insurance
 Agt 15 Becker Blk 2693

Twaites Mrs M G res 306 3rd St 2554

U

UNIVERSAL GARAGE P Piegl Prop
 S Railway St 3524

Urquhart W J res 480 2nd St 3983

V

Volway P E res 138 7th St NE 3304

Voysey C res 932 Dominion St 3079

A BUSINESS EXTENSION TELEPHONE
COSTS 5 CENTS A DAY
A RESIDENCE EXTENSION TELEPHONE
COSTS 2½ CENTS A DAY

W

Wagstaff C res 227 Aberdeen St.....	2691	White Geo Esmonde res 521 10th St SE	2470
Wait N A res 129 8th St.....	3579	White Lunch 230 S Rly St	3993
Walker G F res Dunmore Rd.....	2352	White Percy res 276 1st St	3495
Walker T H res 240 Aberdeen St.....	3465	White S res 461 10th St	3107
Wall J H res 239 2nd St SW.....	3166	Whitehouse John H res 336 2nd St.....	2149
Wallace Chas N E res 535b Princess Ave	3815	Whitney F P res 504 Cambridge St	3102
Wallace S A res 533 Cambridge St SE	3136	WIBBERLEY TAXI Imp Oil Service Stn	
Wallis Dr J W res 144 8th St N E	3176	North Railway St	3333
Ward E res 1027 5th St	2130	Wickett H H res 17 1st St	2944
Wardle J res 505 Hill Road	3792	Wight P res 490 12th St SE	3472
WARE FRED J Mgr Medicine Hat		Williams A G res 451 12th St	2364
Greenhouses Ltd 970 4th St SE.....	2330	Williams Mrs E Assiniboia Beauty Parlor	
WARHAM E Ever Ready Transfer 968		Basement Assiniboia Hotel	2071
Braemar St	2453	Williams W A res 96 4th St SE	2458
Warner E C res 749 1st St	3069	Williams W H res 406 Dundee St	3911
Warner Miss G Children's Wear 6th Ave	3282	Williamson James O res 317 1st St SE.....	2033
Washburn Mrs A res 510 3rd St	2464	Willson George res 445 9th St	3714
Watkin H res 412 Cambridge St	3745	Wilson Miss E res 21 2nd St SW	3414
Watson Alex res 349 7th St	2383	Wilson James res 830 5th St SE	3114
Watts W D res 726 10th St SE	2544	Wilson Wm res 335 3rd St SE	2934
Weeks C D res 127 1st St SW	3159	Winter H J res 210 2nd St S W	3047
Welling Mrs M res 433 10th St	3728	Wo Lee & Co Greenhouses 1st St N	2205
Welsford L res 177 10th St N	2681	Woollven Mrs F C res 825b 3rd St	2063
WESTERN MEAT MARKET Meats		Woollven Roy res 2 Connaught Apts.....	2735
and Groceries 608 3rd St SE	2054	Woolworth F W Co Ltd 633 2nd St	2122
Westwood Clarence D res 27 9th St NE.....	3385	Worth W res 521-C Maple Ave SE	3943
Westwood Geo res 820a Braemar St	2459	Wright A M res 16 1st St SE	2308
Wharton Mrs res 68 2nd St	2622	Wright B W res 154 1st St SW	2256
Wharton W J res 876 Braemar St	3243	Wright Cliff res 33 4th St	2258
Wheat Sheaf Bakery 640 7th St SE	2142	Wright J W res 869a 2nd St	3834
White Mrs A E res 449 2nd St	3248	Wright R res 220 4th St N W	2280
White Mrs A M res 441 Belfast St	3273	Wyatt J H res 1008 Yuill St SE	2615
White A T res 252 4th St SE	3329	Wyatt Dr J L Dentist 7 Hull Blk	2476
White E W res 605 5th Ave	2572	Wyatt Dr J L res 12a View Court.....	2471
		Wylie A res 371 Belfast St	2996

**Is Every Branch of Your Business
Advertised in the**

**Classified Telephone
Directory ?**

For Advertising Rates, Apply
DIRECTORY ADVERTISING DEPT.

Alberta Government Telephones
119 Sixth Ave. W., Calgary

If not, you are missing Oppor-
tunities, of which Your Com-
petitors Avail Themselves.



**Those Who Advertise
Can Afford to Advertise**
Write for Directory Advertising Rates

Y

Y W C A 409 1st St SE	3964
Yates Mrs E res 854 Balmoral St	3662
Yee Shing Laundry and Dry Cleaning 562 3rd St	3906
Yeo Percy res 355 Belfast St	3013
Young's Grocery 108 5th St	2478
Yuill H C res 442 1st St SE	2283
Yuill J H res 473 1st St	2485
Yuill W C res 129 10th St NE	2494

Z

Zachary Mrs A res 825 7th St SE	3143
---------------------------------------	------

WHEN
**TELEPHONING
ADVERTISER**
PLEASE MENTION
THE TELEPHONE
DIRECTORY

Medicine Hat Rural Subscribers

To obtain connection with a Rural Subscriber, call No. 91 on dial and ask for number desired

Ajax Coal Co Ltd The—Medicine Hat	R210	Municipal Airport—Medicine Hat	R204
Alberta Wheat Pool—Dunmore	R518	Muryn Justin—Medicine Hat	R502
Burton Eugene—Medicine Hat	R509	Palmer W—Medicine Hat	R211
Buttrey Mrs Mary—Medicine Hat	R207	Parsons J H—Medicine Hat	R215
Buttrey W—Medicine Hat	R604	Provincial Government	
C P R Station—Dunmore	R513	Dept of Lands & Mines Forest Service G R	
Choice Dairy The—Medicine Hat	R208	Ambrose Forest Ranger—Thelma	R312
Dewalt Simon—Tunore	R107	Reade Frank—Medicine Hat	R214
Harper G A—Dunmore	R515	Schnelle Otto—Dunmore	R507
Hillside Cemetery—Medicine Hat	R202	Smibert H—Elkwater	R303
Hope Bruce—Norwood	R608	Smith E E—Norton	R307
Koenig Dan—Coleridge	R115	Starks R E—Medicine Hat	R506
Lait G H—Medicine Hat	R206	Woolfrey W A—Medicine Hat	R209
Maple Leaf Milling Co Ltd—Dunmore	R511	Woolley Lloyd—Coleridge	R108
		Woolley Norman—Coleridge	R112

The Next Issue of this DIRECTORY

Closes for Press Nov. 15th, 1934

Reserve a Space for Your Ad. NOW

DIRECTORY ADVERTISING DEPT.
Alberta Government Telephones, CALGARY

Directory Advertising

EVERY Telephone in Alberta has a Directory by its side every day of the year.

* * *

The Directory is used thousands of times daily.

* * *

It is never thrown into the waste-paper basket until a new edition is issued. Probably no other publication can make a like claim to continuity of circulation.

* * *

The Telephone Directory is used for innumerable purposes—general information, correct spelling of names, street addresses, buying and selling, etc.

* * *

There are many ways in which the Directory may become of additional service to subscribers—extra listings may be arranged for, by which a subscriber to Exchange Business Service may have the names of any companies he represents, or of any employee or agent, listed in the Directory, at a nominal charge and a subscriber to Exchange Residence Service may have the name of a bona-fide member of his family listed in the Directory for one dollar per line per issue.

* * *

The following Directories are issued by the Alberta Government Telephones:

Calgary and District.	Northern Division.
Lethbridge and District.	Medicine Hat and District.
	Peace River District.

* * *

Our low rates and the wide circulation of the books render Telephone Directory Advertising the cheapest and most effective form of publicity you can buy.

* * *

For further particulars and rates apply

Directory Advertising Department

ALBERTA GOVERNMENT TELEPHONES

119 SIXTH AVENUE WEST

CALGARY

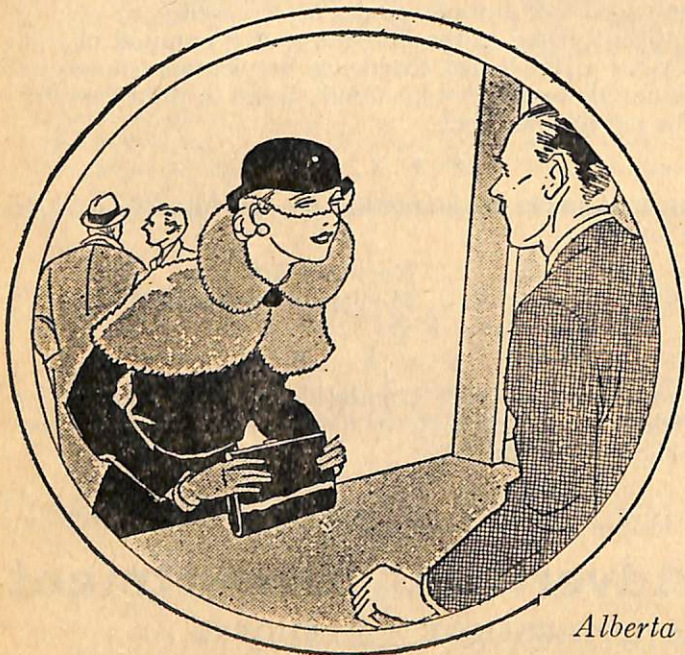
"I want my telephone put back, please"

HARDLY a day passes but that some person who gave up his telephone service in recent months orders it restored. In many cases, people feel that it is false economy to be without a telephone . . . that the small cost of the service is repaid many times each month in convenience, in time and actually in money saved.

Some miss the close and personal contact with friends that telephone service makes possible. Others mention the loss of many pleasant, impromptu social "get-togethers" when their friends are unable to reach them by telephone.

It is all true . . . what these customer friends of ours say: Telephone service costs so little and its value is so great that in most instances it really doesn't pay to try to do without it.

If *you* are missing your telephone . . . just get in touch with our business office. We'll send a man out with a telephone in a hurry.



Alberta Government Telephones
