



TELEPHONE DIRECTORY

MEDICINE HAT

& DISTRICT

Alberta Government Telephones
July, 1940

DRY GOODS
TOILETRIES
SHOES
HARDWARE

2942

MEN'S AND LADIES' READY-TO-WEAR

THE **T. EATON CO**
WESTERN LIMITED
BRANCH STORE

REFRIGERATORS AND WASHERS

FURNITURE
HOUSE
FURNISHINGS
RADIOS

2949

BLAIR'S

24 HOUR SERVICE

Phone

2727

TAXI

Phone

2727

GET THE HABIT AND TAXI-CAB-IT

DISTRIBUTORS FOR:
DODGE AND DE SOTO
CARS AND TRUCKS

FULL LINE OF CHRYSLER PARTS

SERVICING EVERY MAKE OF AUTOMOBILE
FIRESTONE TIRES — WILLARD BATTERIES

PHONE
2379

Medicine Hat Garage 524-526 2nd St.

PHONE

TOP HAT

PHONE

3456 - TAXI - 3456

DAY AND NIGHT SERVICE

Office: NAT BOTTER'S STORE

PASSENGERS FULLY INSURED

Established 1914

SCARLETT

DAY — NIGHT

PHONE

3-3-3-3

TAXI

SCARLETT

DAY — NIGHT

PHONE

3-3-3-3



RICHARDSON'S BAKERY
QUALITY BREADS

HAVE YOU TRIED OUR NEW
VIENNA OVEN LOAF?

Uniformed Salesmen

PHONE

3 2 3 3 AND HAVE ONE OF OUR SALESMEN CALL

J. J. Moore & Son
:: FURNITURE ::

Beds and Bedding -- Linoleum -- Draperies
-- China

"WHERE YOUR \$ GOES THE FARTHEST"

Phone **2787**

532 SECOND STREET

ALBERTA GOVERNMENT TELEPHONES

TELEPHONE DIRECTORY

OF

MEDICINE HAT

and DISTRICT

JULY, 1940

HEAD OFFICE : C.P.R. Building, Edmonton

HON. W. A. FALLOW
Minister of Railways and Telephones

J. D. BAKER
General Manager

A. M. MITCHELL
Comptroller

W. C. BRUCE
General Plant Superintendent

W. B. FERGUSON
General Traffic Superintendent

EMERGENCY CALLS

FIRE
3535

POLICE
2380

GAS
2665
NIGHT 2087

LIGHT
2726
NIGHT 3494

Telephone Service Calls

INFORMATION
92

LONG DISTANCE
0

TROUBLE
93

RURAL
91

Alberta Government Telephones

Head Office: C.P.R. Building, Edmonton

Medicine Hat Office: 5th Street S. E.

HOW TO TRANSACT BUSINESS

With the Department of Telephones

APPLICATIONS FOR NEW SERVICE—CHANGES IN LOCATION— TERMINATION OF SERVICE

All matters relating to new telephone service, removals, termination of service, directory listings, adjustment of accounts, collection of bills, etc., are handled at the Business Offices of the Department.

CHANGES IN DIRECTORY LISTINGS

This telephone directory is issued regularly twice a year. Notification as to new listings, changes or corrections should be made to the Local Office at once.

DIRECTORY ADVERTISING

For information as to space or rates for Directory advertising, please communicate with Local Business Office.

SERVICE DIFFICULTIES

Below are shown the telephone numbers or persons to be called to report service difficulties. If at any time difficulties are not promptly corrected call the Manager of your Central Office:

INFORMATION—

For Information regarding New Subscribers and Changes of Telephone Numbers Call "Information" Dial 92

TROUBLE —

To Report Telephone Out of Order or unsatisfactory Local Service Call "Trouble" Dial 93

To Report Unsatisfactory Long Distance Service Call "Chief Operator" Dial 3417

LONG DISTANCE—

To Call Long Distance Operator Dial 0

TERMS AND CONDITIONS

UNDER WHICH TELEPHONE SERVICE IS FURNISHED

USE OF TELEPHONE

1. The service furnished is for the exclusive use of the subscriber and members of the subscriber's household or the subscriber's employees upon the subscriber's business, and the subscriber shall not extend the use of the telephone to any other person, nor shall the subscriber transmit messages for any other person; and if a residence telephone is used for business or professional purposes the Department may charge therefor the rate charged for business or professional telephones. The residence telephone number of a subscriber may be advertised only in conjunction with the advertising of his business telephone number.

The Department will endeavor to keep the lines and instruments in good working order and undertakes to clear trouble or make repairs with all reasonable despatch, but does not guarantee uninterrupted service.

The right of the subscriber is to use the instruments and connecting lines where the Department may place them, but not elsewhere, under such rules as the Department may from time to time prescribe.

The use of obscene, profane or abusive language while using the telephone is strictly forbidden and service may be immediately discontinued for violation of this rule.

2. The instruments and all accessories connected therewith shall remain the property of the Department and the subscriber shall not remove, alter, or make any attachment thereto; and the subscriber agrees to compensate the Department on demand for any damage, loss or destruction of the Department's instruments and accessories whilst such instruments and accessories are in or upon the premises of the subscriber.

CONSTRUCTION

3. When it is necessary to erect poles or anchors in order to carry the wires from the main telephone line on the road allowance or street to the applicant's premises, such poles and anchors in connection therewith will be supplied and erected by the Department at the expense of the applicant.

CHARGES — HOW PAID

4. All charges for installations, moves, and monthly rentals shall be paid in advance, which shall entitle the subscriber to service with all subscribers connected to the same exchange. Regular toll rates will be charged for all service to points outside of the exchange.

5. Subscribers shall pay the installation charges, first rental instalment (and construction charges, if any) strictly in advance. Excess mileage charge will be added if outside of exchange limits. If subsequent rental accounts remain unpaid after the 15th of the month, service shall be discontinued and no rebate or reduction shall be allowed for such interruption to service.

6. Subscribers shall pay monthly, at schedule rates, for all messages and conversations over the Long Distance lines. If said accounts remain unpaid after the 15th of the month, further credit shall be refused until account is paid.

7. Subscribers shall pay promptly, upon presentation of account, all charges for other miscellaneous items. If these charges are not paid within 15 days, service shall be discontinued.

COMPLAINTS RE LONG DISTANCE SERVICE

8. While the Department will carefully consider complaints in connection with toll service at any time received, it would be appreciated if subscribers would make such complaints immediately after conversation has taken place.

VACATION ALLOWANCE

9. Should a subscriber desire to have his Exchange Residence Service temporarily discontinued, owing to the closing of his residence, he may do so without cancelling contract or having telephone removed, and, if arranged for in advance in writing, an allowance of two-thirds of the rate per month will be made for a period of not less than one month and not exceeding three months in any one year. Subscriber shall state, when making application, the period for which he expects to be absent and shall pay for this period in advance. Subscriber will notify the Department when he wishes service resumed, either in writing or by calling at the office and signing re-connect order. Owing to the fact that Multi-Party Line Telephones cannot be disconnected without a special trip being made to their location, this regulation will not apply to Multi-Party Line Service.

MOVES

10. The telephone is first located where the subscriber directs and must not be moved or interfered with. When the subscriber desires to have the telephone moved to any other location, notice in writing should be given to the local office, at least ten days before the change is desired. The work will then be done as promptly as possible at regular charges.

JOINT USER SERVICE

11. A joint user is a person, firm or corporation who shares the subscriber's exchange service in accordance with tariff provisions. To facilitate this use of service, a directory listing is included.

Business joint user — one-third of business wall-set rate.

Residence joint user—50c per month.

CANCELLATION OF SERVICE

12. Subscribers giving up service must notify the Department in writing, or call at office and sign "Take Out" order. Failing to do this, subscriber will be liable for all charges up to date instrument is removed or taken over by a new subscriber.

DIRECTORIES

13. The Department of Telephones assumes no liability on account of errors in or omissions from its directories. Telephone directories are and remain the property of Alberta Government Telephones. They are printed for the exclusive use of the Department's patrons and are loaned to its subscribers. All persons are cautioned against reproducing their contents, which are fully protected by copyright. Subscribers must not use any binder, holder or other attachments, except as provided by the Department.

TELEPHONE NUMBERS

14. A subscriber's telephone number is not a part of the application for service, but numbers will only be changed when absolutely necessary or for the betterment of the service.

HOW TO USE THE TELEPHONE

AUTOMATIC TELEPHONE

Consult the Telephone Directory for the correct number before you make a call. Do not trust to your memory.

Call "92" for information if the person or firm you wish to call is not listed in the Directory.

1. **Remove the Receiver.**—Be careful not to move the hook at any time during the call.

2. **What to Dial.**—It is necessary to dial each figure of the number in rotation.

3. **How to Dial.**—Suppose you are calling 2301. To dial this number proceed as follows:—

(1) Remove receiver.
(2) Place your finger in the hole over the figure "2."

(3) Turn the dial around until your finger strikes the finger stop, then lift your finger and allow the dial to return to rest without touching it.

(4) Repeat this operation for the figures 3-0-1. If you find that you have made an error before you have completed dialing, hang up the receiver for a few seconds, then remove the receiver, and dial your call again.

4. **Ring and Busy Signals.**—After you have finished dialing you should hear in the receiver either the ringing signal (an intermittent burr-r-ring sound) indicating that the called telephone is being rung, or the busy signal—a rapid buzz-buzz-buzz—indicating that the called line is busy.

If you hear the ringing signal and receive no answer within a reasonable period, hang up the receiver and call later.

If you hear the busy signal hang up the receiver and after waiting a reasonable length of time call again.

If you hear neither signal within half a minute, hang up the receiver for a few seconds, then remove it and dial again—If the same condition is found after several attempts, dial "93" and report the condition to "Trouble" operator.

5. **After You Have Finished Talking.**—Hang up your receiver—This will disconnect you from the called telephone. Leave your receiver on the hook a few seconds before starting to make another call.

AUTOMATIC EXCHANGES

Information:—Call Information "92" for numbers of New Subscribers, Changes, Long Distance Line Charges, New Toll Offices, etc.

Trouble:—Complaints regarding Telephone Troubles should be reported to Trouble Operator, Telephone No. 93. When reporting trouble give telephone number affected and its location, also state as accurately as possible just how trouble manifests itself. Try to be specific, as incomplete information frequently causes delay in locating nature of trouble.

If a line you are trying to call repeatedly tests "busy," notify Trouble Operator, who will investigate whether same is caused by an abnormal condition on line, or from use. If any line appears too busy for good Service, write to the District Commercial Superintendent. Subscribers are requested not to engage Trouble or Information Operators in conversation longer than necessary, as by so doing the operator will be prevented from giving prompt attention to other patrons.

MANUAL TELEPHONE

Consult the Telephone Directory for the correct number before you make a call. Do not trust to your memory.

Ask for "Information" if the person or firm you wish to call is not listed in the Directory.

1. **To Call the Operator** give one long ring before removing the receiver from the hook and then hold receiver to the ear.

2. **When the Operator Replies** by saying, "Number?" give the number of the subscriber's telephone desired, slowly and distinctly.

Example:—"1429" should be pronounced "one four - two nine."

"175" should be pronounced, "One - seven five."

3. **Face the Transmitter** with the lips almost touching the mouthpiece. Speak naturally, distinctly and not too rapidly.

4. **Keep the Receiver to the Ear**, and the Operator, after repeating the number, will connect you with the subscriber called for. If the desired line is found to be in use the operator will report "Line Busy."

5. **When You Have Finished Talking** place the receiver on the hook, small end up, and give a short ring. This gives the operator a signal to disconnect and you are then in a position to call another number or to be called.

NOTE:—At Camrose, Lacombe, Lloydminster, Hanna and Wetaskiwin (Common Battery Exchange) no ringing, except by rural line subscribers, is necessary. Simply remove receiver from hook and in all other respects proceed as instructed above, placing the receiver on the hook when conversation is finished.

6. **Do Not Use the Telephone** during a thunderstorm.

7. **Rural Line Subscribers** should limit their conversation to Five Minutes duration and must not "listen in" to conversation not intended for them, as it interferes with the Service.

Complaints:—Complaints regarding telephone trouble and unsatisfactory Service should be made to the Local Manager, Agent or Chief Operator at the Office concerned, and if not rectified within a reasonable time, the matter should be referred to the General Traffic Superintendent at Edmonton.

LONG DISTANCE SERVICE

Rules and Regulations

To make a Long Distance Call, first call "Long Distance"—when the Long Distance Operator answers, give her your telephone number, followed by the details of your call as indicated below.

CLASSIFICATION OF LONG DISTANCE SERVICE

1. STATION-TO-STATION CALLS

The Station-to-Station rate applies when it is not desired to establish communication between particular persons.

Station-to-Station calls must be made by number whenever Telephone Directory information covering the called point is available. When such information is not available, the name or address under which the telephone is listed should be given, specifying that "anyone at that number will do."

EXAMPLE:—"4567, J. H. Brown speaking, I want to speak to Springdale, 684," or "I want to speak to Springdale, anyone at Mr. John Jones' residence (or business) telephone."

2. PERSON-TO-PERSON CALLS

(Except for points in Manitoba, British Columbia, Eastern Canada and the United States, evening and night rates do not apply to Person-to-Person Service.)

When a Long Distance Call is made, specifying that conversation is desired with a particular person and the connection is established and conversation held with that person, the "Person-to-Person" rate applies.

EXAMPLE:—"4567, J. H. Brown speaking, I want to speak to Springdale, 684, Mr. John Jones," or "If Mr. Jones is not there, I will speak to Mr. A. F. Smith."

NOTE:—*When a particular person is desired, the Long Distance operator must be so advised when the call is placed, otherwise charges will be made from the time connection is established with the telephone desired, whether the party is obtained or not.*

Appointment Calls

An appointment Call is a Person-to-Person call requiring communication to be established at a specified time, and order should be given to the Long Distance operator in the usual manner.

Messenger Calls

A Messenger Call is a Person-to-Person call, necessitating the services of a Messenger to secure the attendance of a specified person, and order should be given to the Long Distance operator in the usual manner. The Messenger Service and Report charges in such cases must be prepaid by the calling party if the call is placed from a Public Pay Station.

Collect Calls.

Collect calls are Person-to-Person or Station-to-Station Calls, the charges for which are reversed, *i. e.*, to be collected from the called party. In such cases the assent of the called party shall be obtained before the connection is established.

LONG DISTANCE SERVICE

Rules and Regulations—Continued

RATES AND CHARGES FOR LONG DISTANCE SERVICE

Long Distance Tolls will be charged to the subscriber from whose instrument the Long Distance call is placed, except those messages for which the receiving party expressly agrees to pay.

All rates quoted are for an initial period of three minutes. For overtime beyond the initial period a proportionate charge is made per minute.

The rates quoted on pages 7 and 8 are Station-to-Station Day Rates.

The Day Rate for a Station-to-Station call is the fundamental rate upon which the rates for other classes of Service are based.

The rate for a completed Person-to-Person, Appointment or Messenger Call, including Written Messages and Telegrams, either Paid or Collect is approximately 25% higher than the corresponding Station-to-Station Day Rate.

Day rates only are used in computing charges on Person-to-Person, Appointment and Messenger Calls, including Written Messages and Telegrams.

Evening and Night Rates

Alberta and Saskatchewan — Reduced rates on Station-to-Station (anyone) calls are in effect from 7 p.m. to 12 Midnight, with a further reduction from Midnight to 4:30 a.m.

British Columbia, Manitoba, Eastern Canada and U.S.A. — Reduced rates are in effect from 7 p.m. to 4:30 a.m., including all day Sundays.

(NOTE:—In no case shall the Evening or Night rate, as the case may be, be less than 25c. for the initial period, unless the Day rate is less, in which case the Day, Evening and Night Rates shall be the same.)

Report Charges

Under certain conditions a Report Charge of approximately one-quarter of the Station-to-Station Day rate will be made on uncompleted Person-to-Person, Appointment and Messenger Calls, including Written Messages and Telegrams.

A Report Charge shall not be made on a Station-to-Station call except when such call is placed "Collect" and the charges have not been accepted.

PAY STATION SERVICE

Pay Station Telephones have been installed by the Department for the convenience of subscribers and the general public, in suitable locations throughout the Province. Local conversations may be had from these telephones at a charge of 5 cents for 5 minutes. Long Distance Service is furnished at regular tariff rates upon deposit of the amount of the initial charge (covering three minutes conversation) the usual charges being made for excess time.

Non-subscribers who desire to use Subscribers' telephones should be referred to the nearest Public Pay Station.

If there is anything about our rates and practices you do not fully understand, please call our Local Manager or Chief Operator and they will be glad to explain.

LONG DISTANCE RATES

From Medicine Hat

To Places connected with the Long Distance Lines of the Alberta Government
Telephones and Connecting Systems in Alberta.

NOTE:—These Rates are Subject to Change without Notice.

TO	Station- to-Station Day Rate 3 Mins.	TO	Station- to-Station Day Rate 3 Mins.	TO	Station- to-Station Day Rate 3 Mins.	TO	Station- to-Station Day Rate 3 Mins.
	\$ c		\$ c		\$ c		\$ c
Abee	1.95	Carstairs	1.15	Etter McDougall	1.65	Lac La Biche	2.10
Abilene	1.80	Carvel	1.80	Etzikom	.30	Lacombe	1.35
Acme	1.00	Castor	1.00	Evansburg	1.95	Lac Ste Anne	1.80
Airdrie	1.05	Cavendish	.35	Everts	1.35	Lafond	1.65
Alberta Beach	1.80	Cereal	.60	Exshaw	1.35	Lamont	1.65
Alcomdale	1.80	Cessford	.50			Langdon	.90
Alderson	.25	Champion	.70	Fallis	1.80	Lavoy	1.50
Alexo	1.80	Chauvin	1.15	Fawcett	2.10	Leduc	1.65
Alhambra	1.50	Cherhill	1.95	Ferintosh	1.35	Legal	1.80
Alix	1.20	Chinook	.60	Flatbush	2.25	Legend	.40
Alliance	1.05	Chip Lake	1.95	Flat Lake	1.80	Leo	1.00
Alsask, Sask.	.60	Chipman	1.65	Foisy	1.35	Leslieville	1.60
Altario	.85	Chisholm	2.25	Foothills	2.10	Lethbridge	.65
Amber Valley	2.10	Clareholm	.80	Foremost	.35	Linaria	2.10
Andrew	1.65	Clive	1.35	Forestburg	1.15	Lindbergh	1.65
Antross	1.65	Clyde	1.95	Fort Assiniboine	2.10	Lisburn	1.95
Ardmore	1.80	Coalspur	2.10	Fort Kent	1.80	Little Gem	.75
Armada	.60	Cool Valley	2.10	Fort Saskatchewan	1.65	Lloydminster	1.35
Armistice	1.65	Cochrane	1.15	Fraser	1.65	Lomond	.60
Arrowwood	.75	Cold Lake	1.95	Freedom	1.95	Longview	1.00
Ashmont	1.80	Columbine	1.80			Lonira	2.10
Athabasca	2.10	Compeer	.80	Gadsby	1.05	Looma	1.65
Atlee	.40	Comrey	.40	Gainford	1.95	Lougheed	1.20
Atmore	2.10	Condor	1.50	Galahad	1.10	Lunnford	1.95
Banff	1.50	Conrad	.45	Gleichen	.75	Luscar	2.25
Barons	.70	Consort	.85	Glendon	1.80		
Barrhead	1.95	Cooking Lake (North)	1.65	Glenaville	1.95	Mackay	2.10
Bashaw	1.35	Cooking Lake (South)	1.65	Glenwood	1.80	Macleod	.80
Bassano	.60	Coronado	1.80	Gorman	2.10	Magnolia	1.95
Battle Lake	1.65	Coronation	.90	Grand Centre	1.80	Magrath	.70
Bawlf	1.35	Coutts	.60	Grande Prairie	.80	Mallaig	1.80
Beacon Hill	1.80	Cowley	.95	Grassy Lake	2.10	Ma-Me-O Beach	1.50
Beauvallon	1.65	Craigmyle	.85	Green Court	2.10	Manly Highway	1.80
Beaver Crossing	1.80	Cremona	1.20	Gull Lake	1.35	Manola	1.95
Bellis	1.80	Crossfield	1.10	Gunn	1.80	Manville	1.50
Bentley	1.35	Czar	1.05			Manyberries	.30
Big Fish Lake	1.65			Halkirk	1.05	Markerville	1.35
Big Valley	1.05	Dakin	2.10	Hanna	.80	Mayrthorpe	2.10
Bindloss	.40	Dapp	2.10	Hardisty	1.15	McLaughlin	1.35
Blackie	.85	Davis	2.10	Hay Lakes	1.50	Meadowview	1.95
Blairmore	1.05	Daysland	1.35	Heaton Moor	1.95	Meanook	2.10
Bloomsbury	2.10	Deep Creek	2.25	Heinsburg	1.65	Meeting Creek	1.35
Blue Ridge	2.10	Delburne	1.15	Heister	1.20	Mellowdale	2.10
Bon Accord	1.80	Delia	.85	Hemaruka	.75	Mercoal	2.10
Bonnyville	1.80	Derwent	1.50	Hespero	1.50	Metiskow	1.00
Bordenave	1.80	Deville	1.65	Highridge	1.95	Michichi	.85
Bow Island	.25	Didsbury	1.15	High River	.90	Milk River	.55
Bowden	1.20	Donalda	1.20	Hilda	.30	Millet	1.50
Bowell	.10	Donatville	2.10	Hilliard	1.65	Millicent	.45
Bowmanton	.15	Doucette	1.65	Holden	1.50	Milo	.65
Box Springs	.10	Downie	1.95	Holmes Crossing	2.10	Minburn	1.50
Boyle	2.10	Drumheller	.85	Hughenden	1.05	Mirror	1.20
Boyne Lake	1.80	Duchess	.45	Hussar	.70	Mission	2.10
Bragg Creek	1.15	Duclos	1.80	Hylton	2.10	Monitor	.85
Brant	.80	Durlingville	1.80			Morecambe	1.65
Breezelawn	.10	Duvernay	1.65			Morinville	1.80
Breton	1.65			Iddesleigh	.35	Morrin	.90
Brooks	.45	Eastbourne	1.80	Innisfail	1.20	Mountain Park	2.10
Brosseau	1.65	Eastburg	1.95	Innisfree	1.50	Mulhurst	1.65
Bruce	1.35	East Coulee	.75	Irma	1.20	Mundare	1.65
Buffalo	.35	Echohill	1.95	Iron Springs	.55	Munson	.85
Bulwark	1.00	Eckville	1.50	Irricana	1.00	Musidora	1.65
Burdett	.30	Edberg	1.35	Irvine	.15	Myrdam	1.50
Busby	1.95	Edgerton	1.15	Islay	1.50		
Byemoor	.95	Edmonton	1.65			Naco	.70
		Edmonton Beach	1.80	Jarrow	1.35	Nanton	.85
Cadomin	2.25	Edson	2.10	Jarvie	2.10	Neerlandia	2.10
Calahoo	1.80	Edward	1.80	*Jasper	2.85	Nelspur	1.65
Calgary	1.00	Egremont	1.80	Jenner	.35	Nemiscam	.30
Calmar	1.65	Elk Point	1.65	Judson	.55	Nestow	1.95
Cambria	.80	Ellscoff	1.95			New Bridgen	.70
Camp Creek	2.10	Elnora	1.10	Kapasiwin	1.80	Newbrook	1.95
Camrose	1.35	Empress	.45	Killam	1.20	New Dayton	.55
Canmore	1.35	Endiang	.95	Kinsella	1.35	New Sarepta	1.50
Carbon	.90	Entwistle	1.95	Kirriemuir	.80	Niton	2.10
Cardston	.85	Erith	2.10	Kitscoty	1.50		
Carmangay	.70	Erixon	1.35	Knob Hill	1.65		
Carolside	.60	Esther	.70				
Carrot Creek	2.10						

* For other classes of rates to Jasper call the Chief Operator.

TO	Station-to-Station Day Rate 3 Mins.	TO	Station-to-Station Day Rate 3 Mins.	TO	Station-to-Station Day Rate 3 Mins.	TO	Station-to-Station Day Rate 3 Mins.
	\$ c		\$ c		\$ c		\$ c
Nobleford	.65	Raymond	.60	Shandro	1.80	Vale	.15
Noral	1.95	Redcliff	.10	Sheerness	.70	Vegreville	1.50
Nordeg	1.80	Red Deer	1.35	Shoal Creek	2.10	Venice	2.10
North Cooking Lake	1.65	Redwater	1.80	Sibbald	.60	Vermilion	1.50
Northville	1.95	Retlaw	.45	Silver Bay	1.65	Veteran	.85
		Richards	2.10	Sinclair	1.80	Viking	1.35
Okotoks	.95	Richdale	.75	Sion	1.95	Vilna	1.80
Olds	1.20	Rife	1.80	Skiff	.40	Vimy	1.95
Onaway	1.80	Rimbey	1.50	Smoky Lake	1.80	Vulcan	.75
Opal	1.80	Rochester	1.95	South Cooking Lake	1.65		
Orion	.30	Rochfort	2.10	Southworth	1.95		
Owseye	1.80	Rockyford	.85	Spedden	1.80		
Oyen	.60	Rocky Mtn. House	1.50	Standard	.80		
		Rosebud	.85	Stanger	1.95	Wabamun	1.80
		Rose Lynn	.60	Stanmore	.70	Wainwright	1.20
		Rosevear	2.10	Stavelly	.85	Wake-Shyre Lodge	1.15
Pashley	.10	Ross	1.65	Sterco	2.10	Walker	.10
Patricia	.40	Rossington	1.95	Stettler	1.15	Walsh	.20
Paulus	1.65	Rowley	.95	Steville	.45	Wardlow	.45
Paxson	2.10	Royalties	1.00	Stony Plain	1.80	Warner	.55
Pearsonville	.20	Rumsey	1.00	Strathmore	.85	Warspite	1.80
Peers	2.10	Rush Lake	.15	Strome	1.20	Waskatenau	1.80
Pembridge	1.95	Ryley	1.50	Suffield	.20	Waterton Park	1.00
Pemukan	.85			Sunnynook	.60	Wayne	.80
Pendant d'Oreille	.40	St. Albert	1.80	Sweet Grass, Mont.	.60	Westerose	1.50
Pendryl	1.65	St. Lina	1.80	Sylvan Lake	1.35	Westlock	1.95
Penhold	1.20	St. Paul	1.65			Wetaskiwin	1.50
Perryvale	2.10	St. Vincent	1.80	Taber	.45	White Court	2.25
Pickardville	1.95	Saddle Lake	1.65	Tawatinau	1.65	Whitla	.15
Picture Butte	.60	Sangudo	1.95	Therien	1.80	Wildwood	1.95
Pincher Creek	.95	Sarraill	2.10	Thorhild	1.95	Willingdon	1.65
Plains	2.10	Saunders	1.65	Thorsby	1.65	Willow Creek	.80
Plamondon	2.10	Schuler	.25	Three Hills	1.00	Winfield	1.65
Pollockville	.55	Scollard	1.00	Tilley	.35	Winnifred	.20
Ponoka	1.35	Scotfield	.70	Tipperary	2.10	Wolf Creek	2.10
Provost	1.00	Seba	1.80	Tofield	1.50		
		Sedalia	.70	Trochu	1.05		
Radway	1.80	Sedgewick	1.20	Turner Valley	1.05	Yeoford	1.65
Rainier	.45	Seven Persons	.15	Two Hills	1.65	Youngstown	.65
Ray	1.80						

In addition to the points on pages 7 and 8 Long Distance Connection may be had also with the following places in Alberta and British Columbia, rates for which can be obtained by calling "Long Distance":—

ALBERTA POINTS

Acadia Valley	Beddington	Buford	Dahmer	Elk Island
Acheson	Beiseker	Burmis	Dalemead	Elk Island Park
Adkins	Bellevue	Burnt Lake	Dalroy	Elkton
Aerial	Belvedere		Darwell	Elkwater Lake
Aetna	Bennett		Davisburg	Ellerslie
Agricola	Benton	Cadogan	Delacour	Emery
Albion Ridge	Berry Moor	Calling Lake	Del Bonita	Enchant
Aldersyde	Beverly	Calverly	Gemay	Ensign
Alice Lake	Beynon	Campbell Lake	Desjarlais	Entice
Allerston	Bircham	Campsie	Dewberry	Equity
Allingham	Birdsholm	Cappon	De Winton	Erskine
Amisk	Bismark	Cardiff	Diamond City	Everett
Angle Lake	Bittern Lake	Carlton Hill	Dickson	Ewelme
Angus Ridge	Black Diamond	Caroline	Dina	Excel
Ankerton	Blackfalds	Carseland	Dinant	Eyremore
Anzac	Blackfoot	Cassils	Dinton	
Ardenode	Blondheim	Cayley	Dobson	Fabyan
Ardenville	Bluffton	Chailey	Dodds	Fairacres
Ardley	Bodo	Chancellor	Dog Pound	Fairbank
Ardrossan	Boian	Cheadle	Doondale	Fairfield
Armena	Bonlea	Chesterwood	Dorenee	Fairy Dell
Arneson	Bonnar	Chin	Doris	Faith
Asker	Borradaile	Clandonald	Dorothy	Falun
Avalon	Botha	Clarinda	Dowling	Farming Valley
Azure	Bottrel	Clearview	Downing	Farrow
	Bouyant	Clover Bar	Drayton Valley	Federal
	Bow City	Cluny	Duagh	Fedorah
Baintree	Bradshaw	Clymont	Duffield	Fenn
Balmoral	Bradner	Coaldale	Duhamel	Ferrybank
Balzac	Bretona	Coalhurst	Dunmore	Fishburn
Bardo	Brightview	Coleman	Dunshalt	Fleet
Barnwell	Britain	Collinton	Dunstable	Florann
Bathgate	Brocket	Commerce		Foreman
Battle	Brooksley	Conjuring Creek		Forest Lawn
Battle Bend	Brownfield	Connaught	Eagle Hill	Four Nine
Battleview	Brownfield	Copeville	Earle	Frank
Beaumont	Brownlow's L'ndg	Cornucopia	Earling	Frankburg
Beaver Heights	Broxburn	Cousness	Earville	Freemank River
Beaver Hills	Bruderheim	Cousins	Eastervale	
Beaver Lake	Buffalo Head Ranch	Crowfoot	Eden Valley	
Beaver Mines	Buffalo View	Cummings	Edison	Gahern
Beazer		Custer	Edwell	Garden Plain
				Garred

ALBERTA POINTS—Continued

Gartley
Gem
Ghost Pine
Gibbons
Gilby
Gillen
Gilpin
Gladys
Glenbow
Glenford
Golden Spike
Good Hope
Good Luck
Gopher Head
Grainger
Graminia
Grand Valley
Green Glade
Greenshields
Griesbach
Grosmont
Groton
Gwynne

Hackett
Haight
Hairy Hill
Hamlin
Handhills
Hardieville
Harmattan
Hart Siding
Hartell
Hastings Coulee
Haven
Haynes
Hayter
Hazelidine
Heath
Heath Creek
Heather Brae
Heatherdown
Helmsdale
Herronton
Hesketh
Hetherington
Highfield
Highland View
Hillcrest
Hill End
Hillspring
Hoadley
Hobbema
Homeglen
Horsehaven
Horseshoe Lake
Hubalta
Hunterville
Hutton
Huxley

Indus
Inga
Ingleton
Inverlake
Irwinville

Jeffrey
Joffre
Josephburg
Jumping Pound

Kahwin
Kaleland
Kathryn
Kavanagh
Kelsey
Keoma
Kessler
Kevisville
Kew
Kilbourn
Kimball
Kingman
Kipperville
Kirkcaidy
Knee Hill Valley

Laconia
Lake Demay
Lake Isle
Lake Minnewanka
Lake View
Lamoureux
Landonville
Lanfine
Lavesta
Lea Park
Leavitt
Leedale
Leeshore
Lewisville
Liberty
Lindbrook
Lineham
Livingston
Lochend
Lockhart
Long Coulee
Lousana
Lowe
Loyalist
Lucky Strike
Lundbreck
Lyalta

Madden
Majorville
Makepeace
Malmo
Manfred
Maple Leaf
Martins
Marwayne
Masinasin
Maughan
Maunsell
Maybutt
Mayton
Mazepa
McDonaldville
Meadowbank
Meadow Creek
Menaik
Merna
Mewassin
Midland
Midnapore
Millarville
Miller

Milnerton
Monarch
Morgan
Morley
Morningside
Mosside
Mossteigh
Mound
Mountain View
Murray Valley

Nacmine
Nakamun
Namaka
Namao
Neighborview
Nevis
Newcastle
New Lindsay
New Norway
New Oxley
Nightingale
Nilrem
Nisbet
Nisku
Norfolk Siding
Northbank
Northern Valley
Northleigh
Norton

Ogden
Ohaton
Olin Creek
Olson Coulee
O'Mara
Orkney
Orton
Ouelletteville
Oxville

Pakan
Paradise Valley
Parkland
Park View
Partridge Hill
Passburg
Peacock
Pearce
Pearson
Peat
Pekisko
Perbeck
Phillips
Pibroch
Pincher Station
Pine Lake
Pirmez Creek
Pleasant View
Poe
Poplar Ridge
Poplar Site
Pretty Hill
Priddis
Princeton
Puffer
Purple Springs

Quarrel
Queenstown

Raley
Ranfurlly
Raven
Redland
Red Lodge
Red Raven
Red Willow
Reid Hill
Reist
Rexboro
Ribstone
Rio Alto
Rivercourse
Riviere Qui Barre
Rockeling Bay
Rocky Rapids
Rodino
Rolling Green
Rolling Hills
Rosaland
Rosedale
Roselea
Rosemary
Rosenheim
Rosenroll
Ross Creek
Rosyth
Round Hill
Rusylvia

St. Kilda
St. Michael
Saltaux
Sammons
Sarcee
Sather
Scandia
Scapa
Scotstoun
Seaforth
Seebe
Sexton Creek
Sharples
Shaughnessy
Sheep Creek
Shepard
Shonts
Shouldice
Sidcup
Silver Lake
Simons Valley
Skaro
Soda Lake
Southesk
Sponden
Springbank
Spring Coulee
Springdale
Spring Lake
Spring Point
Springvale
Spruce Grove
Stampepe
Stand Off
Staplehurst
Star
Sterlingville
Stirling
Stobart
Stockland

Strand
Strangmuir
Streamstown
Sugar Bowl
Sullivan Lake
Sulphur Springs
Summerview
Sundre
Sunnydale
Sunnyslope
Swalwell

Talbot
Taylorville
Tees
Telfordville
Tempest
Thelma
Throne
Tindastoll
Tolland
Tomahawk
Tongue Creek
Torrington
Travers
Tudor
Turin
Twin Butte
Twin Lakes
Twining

Ulster

Vauxhall
Victoria
Viewpoint
Villeneuve
Volmer

Wahstao
Waltross
Wanda
Warden
Warwick
Waterglen
Water Valley
Watts
Wealthy
Welling
Wellsdale
Westcott
Westward Ho
Whisky Gap
Whitewood Lake
Whitford
Wildmere
Willowdale
Willowlea
Wilson Siding
Wilton Park
Wimborne
Winterburn
Woodhouse
Wood River
Woolford
Wostok
Wrentham

Yarfield
Yorkville

BRITISH COLUMBIA POINTS IN THE CROW'S NEST PASS

Baynes Lake
Bull River
Coal Creek
Corbin
Cranbrook
Creston

Elko
Fairy Creek
Fernie
Fort Steele
Galloway
Hosmer

Isadore Lookout
Jaffray
Kimberley
Kingsgate
Kitchener

Lumberton
Marysville
McGillivray
Michel
Morrissey
Moyie

Moyie Mountain
Natal
St. Eugene Mission
Wardner
Yahk

FOR LONG DISTANCE RATES

SEE PAGES 7 TO 10

Rates to Certain Points in Canada and the United States of America

Rates to points not listed below may be obtained by calling Long Distance

FROM MEDICINE HAT

TO	STATION-TO-STATION				PERSON-TO-PERSON				Report Charge
	DAY (Exc. SUN.)		NIGHT and SUNDAY		DAY (Exc. SUN.)		NIGHT and SUNDAY		
	3 Mins.	Add. Min.	3 Mins.	Add. Min.	3 Mins.	Add. Min.	3 Mins.	Add. Min.	
AKRON, OHIO	\$4.75	\$1.50	\$2.75	\$0.90	\$6.25	\$2.00	\$4.00	\$1.25	\$0.70
BALTIMORE, MD.	5.50	1.75	3.25	1.00	7.25	2.25	4.75	1.50	.75
BOISE, IDAHO	1.90	.60	1.10	.35	2.40	.80	1.60	.50	.35
BOSTON, MASS.	6.00	2.00	3.75	1.25	7.75	2.50	5.50	1.75	.80
BRANDON, MAN.	1.80	.60	1.05	.35	2.30	.75	1.55	.50	.35
BROOKLYN, N.Y.	5.75	1.75	3.50	1.00	7.50	2.50	5.25	1.75	.75
BUFFALO, N.Y.	5.00	1.50	3.00	1.00	6.50	2.00	4.50	1.50	.70
BUTTE, MONT.	1.25	.40	.75	.25	1.65	.55	1.15	.35	.25
CHICAGO, ILL.	4.00	1.25	2.25	.75	5.00	1.50	3.25	1.00	.60
CINCINNATI, OHIO	4.75	1.50	2.75	.90	6.25	2.00	4.00	1.25	.70
CLEVELAND, OHIO	4.75	1.50	2.75	.90	6.25	2.00	4.00	1.25	.70
DENVER, COLO.	2.75	.90	1.60	.50	3.50	1.00	2.35	.75	.45
DETROIT, MICH.	4.50	1.50	2.75	.90	5.75	1.75	4.00	1.25	.65
DULUTH, MINN.	3.00	1.00	1.70	.55	3.75	1.25	2.45	.80	.50
GREAT FALLS, MONT.	.95	.30	.55	.15	1.30	.40	.90	.30	.20
HALIFAX, N.S.	7.00	2.25	4.25	1.25	9.25	3.00	6.50	2.00	.90
HELENA, MONT.	1.15	.35	.65	.20	1.55	.50	1.05	.35	.25
KANSAS CITY, MO.	3.75	1.25	2.10	.70	4.75	1.50	3.10	1.00	.55
LOS ANGELES, CAL.	3.75	1.25	2.10	.70	4.75	1.50	3.10	1.00	.55
MILWAUKEE, WIS.	4.00	1.25	2.25	.75	5.00	1.50	3.25	1.00	.60
MINNEAPOLIS, MINN.	3.00	1.00	1.70	.55	3.75	1.25	2.45	.80	.50
MONTREAL, QUE.	5.50	1.75	3.25	1.00	7.25	2.25	4.75	1.50	.75
NEW YORK, N.Y.	5.75	1.75	3.50	1.00	7.50	2.50	5.25	1.75	.75
OAKLAND, CAL.	3.50	1.00	1.95	.65	4.50	1.50	2.95	.95	.55
OMAHA, NEB.	3.25	1.00	1.85	.60	4.00	1.25	2.60	.85	.50
OTTAWA, ONT.	5.25	1.75	3.25	1.00	6.75	2.25	4.75	1.50	.70
PHILADELPHIA, PA.	5.75	1.75	3.50	1.00	7.50	2.50	5.25	1.75	.75
PITTSBURG, PA.	5.25	1.75	3.25	1.00	6.75	2.25	4.75	1.50	.70
PORTLAND, ORE.	2.30	.75	1.35	.45	3.00	1.00	2.05	.65	.40
REGINA, SASK.	1.65	.55			2.05	.65			.45
ST. JOHN, N.B.	6.25	2.00	3.75	1.25	8.25	2.75	5.75	1.75	.80
ST. PAUL, MINN.	3.00	1.00	1.70	.55	3.75	1.25	2.45	.80	.50
SALT LAKE CITY, UTAH	2.30	.75	1.35	.45	3.00	1.00	2.05	.65	.40
SAN FRANCISCO, CAL.	3.50	1.00	1.95	.65	4.50	1.50	2.95	.95	.55
SASKATOON, SASK.	1.50	.50			1.85	.60			.40
SEATTLE, WASH.	2.10	.70	1.25	.40	2.75	.90	1.90	.60	.40
SHELBY, MONT.	.70	.20	.40	.10	1.00	.30	.70	.20	.20
SPOKANE, WASH.	1.45	.45	.90	.30	1.85	.60	1.30	.40	.30
TACOMA, WASH.	2.10	.70	1.25	.40	2.75	.90	1.90	.60	.40
TORONTO, ONT.	5.00	1.50	3.00	1.00	6.50	2.00	4.50	1.50	.70
VANCOUVER, B.C.	3.00	1.00	1.50	.50	3.75	1.25	2.65	.85	.50
VICTORIA, B.C.	3.50	1.00	1.75	.55	4.50	1.50	3.15	1.00	.55
WASHINGTON, D.C.	5.75	1.75	3.50	1.00	7.50	2.50	5.25	1.75	.75
WINNIPEG, MAN.	2.20	.70	1.35	.45	2.90	.95	2.05	.65	.40

Night rates apply from 7.00 p.m. to 4.30 a.m.

To secure Evening or Night Rates on station-to-station calls to points in Saskatchewan—Call the Operator.

Person-to-person Night and Sunday rates do not apply on calls to points in Saskatchewan

MEDICINE HAT

EXCHANGE AND OFFICE, FIFTH STREET SOUTH-EAST

CONTINUOUS SERVICE

INFORMATION — For Information regarding New Subscribers and changes of Telephone Numbers.....	Call "Information" Dial	92
TROUBLE — To Report Telephone Out of Order or unsatisfactory Local Service	Call "Trouble" Dial	93
To Report unsatisfactory Long Distance Service Call "Chief Operator" Dial		3417
LONG DISTANCE — To Call Long Distance Operator	Dial	0
RURAL — For List of Rural Subscribers, see pages following list of Exchange Subscribers. TO CITY SUBSCRIBERS — For connection with Rural Subscribers Dial 91, and when Operator answers give the Number of Rural Subscriber desired, distinctly, as R 3-1-4.		
FIRE — In case of Fire	Dial	3535
POLICE — To call the Police	Dial	2380

LONG DISTANCE CALLS ARE CLASSIFIED

STATION-TO-STATION CALLS *When you will speak to anyone at the distant telephone.*

This type of call meets most needs and is at the lowest rate. It is the simple basic call, requiring only the connecting of two distant telephones.

PERSON-TO-PERSON CALLS *When a particular person is desired.*

Entailing, as it does, more labor and longer use of lines, this type of call takes a higher rate. In the event of the call not being completed a small charge is made for reports furnished.

These Special Services Are Also Available

Appointment Calls . are made when a particular person is required at a specified time. The operator makes the appointment with the distant party.

Collect Calls When called party is requested to pay for and accepts charges.

Messenger Calls . . are made when the called party cannot be reached by telephone and a messenger is sent to bring the party to the telephone.

Appointment and Messenger Calls are on person-to-person basis.

GIVE THE OPERATOR THE DISTANT NUMBER IF YOU CAN—IT SPEEDS UP THE SERVICE



Your Florist!!

A Complete Floral Service

NOVELTIES
GIFT BOXES
CORSAGES
POTTED PLANTS
CUT FLOWERS

FLOWERS for FUNERALS
FLOWERS for WEDDINGS
CHURCH or HOME
ARTISTIC DECORATIONS
ARRANGED

WE HANDLE ALL DETAILS

ALL FLOWERS ARE BEAUTIFUL, BUT IT DOES
MAKE A DIFFERENCE HOW THEY ARE ARRANGED

Harward's House of Flowers

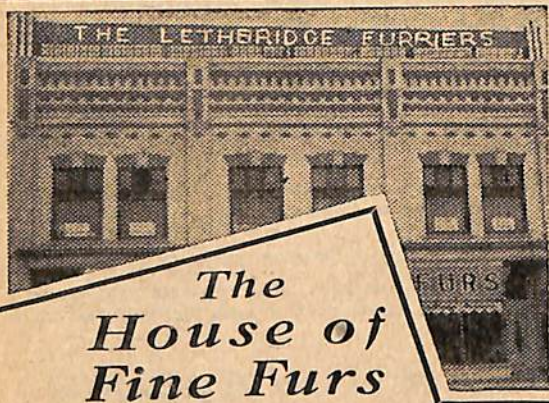
MILDRED HARPER

EDWARD WARD

PHONE — DAY
2233

WE DELIVER
6th Avenue
(Next Door to Foodland)

NIGHTS & HOLIDAYS
2130 - 3631



*The
House of
Fine Furs*

Visit our modern fur salon for superior selections. Courteous service. Leadership in fur designing. We know we can please you.

FUR STORAGE

● For greatest safety store your furs in our MOTH PROOF cold storage vault, located on the premises. For particulars, write us.

LETHBRIDGE FURRIERS

MAJESTIC
THEATRE
BUILDING

5th Ave. South
LETHBRIDGE
ALTA.

RESTYLING



REMODELLING

RELINING



REPAIRING

CLEANING



GLAZING

MEDICINE HAT

EXCHANGE SUBSCRIBERS.

(For Rural Subscribers see Page 24)

A

Aberdeen Pharmacy 399 Aberdeen St	3218
Adkins B Grocery Store 539a N Railway St	3652
Adkins Wm A res 445 4th St	3119
Aitken J R res 26 8th St	3353
Akers F res 820 12th St	2474

ALBERTA CARTAGE & TAXI

CO H E Homer 701 1st St SE	2104
H E Homer res	2163

ALBERTA CLAY PRODUCTS

CO LTD Cor Clay and 6th St	2578
Factory Office T Graham & W C Yuill	2302
Pottery Division Industrial Site	3575
H C Yuill Mgr res 442 1st St SE	2283
J H Yuill res Erin Lodge 473 1st St	2485
Alberta Electric Cleaners & Dyers 559 2nd St	3138

ALBERTA FOUNDRY & MACHINE CO LTD THE Foundry St

2553

ALBERTA GOVERNMENT TELEPHONES

Information regarding new subscribers and change of telephone numbers	92
Telephones out of order	93
Rural Operator	91
Long Distance Operator	0
Chief Operator	3417
Local General Office 5th St SE	3490
Manager's Office	3492

ALBERTA LINSEED OIL COMPANY LIMITED THE 9th Ave SE

W A Church Manager's res	3348
Geo E White Secy res	2470
Allan—see also Allen	
Allan Robert res 412 5th St	3055
Allan T G res 244 9th St S	3105
Allardyce Thomas res 957 5th St	3668
Allen—see also Allan	
Allen E G res 318 Belfast St	2173
Allen M H res 452 8th St SE	2748
Allison L res 27 5th St SW	2368
Altin John Italian Groceries 505a N Railway St	3954
American Cafe Jim Funk S Railway St	2751
Amos E res 464 Belfast St	3833
Anderson A J res 406 9th St	2322
Anderson Miss Annie Hairdresser 521 7th St SE	2190
Anderson C B res 73 8th St	3622
Anderson Chas res 335 1st St SE	3434
Anderson G G res 825a 2nd St	2397
Anderson Graham 244 Aberdeen St	3403
Grazing Representative Dept of Lands & Mines	

ANDERSON INSURANCE AGENCY

Huckvale Blk 668 3rd St	2481
Anderson J F res 1156 Yuill St	2060
Anderson James res 722 9th Ave	3323

ANDERSON SERVICE STATION

Battery Service 422 S Railway St	2297
Anderton J E res 911 S Railway St	3722
Ansley E C res 437 6th St	2366
Ansley Mrs H res 5 Diana Court	2664
Armitage H res Ogilvie Place	2780
Armouries 3rd St	3368
Armstrong Dr B C Phys & Surg 826 2nd St SE	2555
Armstrong Dr B C res 118 2nd St SW	3884
Armstrong R W res 537c 5th Ave	3648
Armstrong Wm res 555 Aberdeen St	3940
Ashburner E res 110 8th St NE	3488
Ashley W S res 532c 4th Ave	3683
Askew Miss V E res 819 5th St	3436

ASSINIBOIA HOTEL CO LTD

3rd St SE	
Private Branch Exch connecting all rooms	2881
Atha A N res 404 8th St	2695
Atkins A res 730 3rd St	3565
Atkinson G res 442 12th St	3146
Attrill F res 872a 4th St	3895
Austad T res 70 10th St NE	3848

B

Bagshaw Miss Elsie res 311 7th St	3265
Baillie Miss C res 3 Montgomerie Apts	3187
Bain Jas res 538b 6th Ave	2508
Bainbridge Rev J W res 459 4th St	2237
Baird George res 329 Belfast St	2688
Baker Mrs Amy res 541 7th St	3836
Baker V R res 522C 6th Ave	2135
Baldwin W H res 230 5th St	2708
Ball Miss A res 506a 6th Ave	2683

BANK OF MONTREAL 616 2nd St

2004
2018
Manager's res 5 2nd St SW

2335

BARRIE WM Plumbing & Heating

312 4th St SE	3122
Barton G res 610 Parkview Drive	3397
Bateman H H res 128 1st St NE	3578
Baumler Karl res 820 1st Ave	2576
Bayne David res 341 Belfast St	3319
Bean Mrs Edith res 255 Aberdeen St	3929
Beaton John R res 536 Belfast St	3471

PATTISON FUNERAL HOME

Funeral and Ambulance Service

PHONE

2214

AGENTS FOR MONUMENTS

Corner 5th Avenue and 2nd Street

PHONE

2214

BEAVER (ALBERTA) LUMBER

LTD cor 6th St & S Railway.....	2351
W D Lutes Local Mgr res 414 10th St	3660
Becker R C res 210 1st St SE.....	2086
Begg W A KC Becker Blk	2105
Begg W A res 14 2nd St SE.....	2291
Bell Mrs A W res 364 11th St	2372
Bell Mrs Ben res 412 Belfast St	2596
Bell E A res 537 7th St.....	2729

BELL J A AGENCY THE

Insurance & Financial Bkrs 643 2nd St SE.....	2728
Bell J A res 130 2nd St SW.....	2690
Bell J T res 359 4th St SE.....	2290
Bellamy Jack A K res 53 2nd St SW.....	3705
Bennett Harold res 1036 Dominion St	2679
Bennett W B res 540 6th Ave	2515
Beny Charles Jr res 169 5th St.....	2785

BENY & SON LTD 410 South

Railway St	
Parts and Service Dept	2009
Sales and General Office	3009
Buick Pontiac Oldsmobile Chevrolet	
G M C and Maple Leaf Trucks &	
Caterpillar Tractor	
Sales & Service	
Authorized Duco Refinishers'	
Dominion Tires	
McColl-Frontenac and Texaco Products	

Bergman J T res 404 Aberdeen St.....	3209
Berkley Shop The Ladies' Ready to Wear	
609 3rd St	3345

BEVERIDGE J C Furniture 620 2nd St SE	2226
Beveridge J C res 340 2nd St SW.....	3931
Bieber Bros Grocery 546B Ash Ave	2066
Biggs Geo res 610 Spencer St	2316
Bishop Miss A C res 21 View Court	2125
Bishop M C res 69 4th St S E	2014
Bishop W A res 332 4th St SW	3325

BLACK HARDWARE LTD THE

656 2nd St SE	
Store	2456
General Office	3126
R C Black Mgr res	2588
Black R C res 275 3rd St SE.....	2588

BLAIR SLIM TAXI S Railway & 2nd St.

Blossom Mrs W E res 102 4th St.....	3551
Bomford E S res 813a 4th St SE.....	2607

BOND CLOTHES & HAT SHOP

218 S Railway St	3875
Bond Roy O res 488 10th St SE.....	3640
Boschee Ed Trucking & Draying 42 5th St SW.....	2565
Botter Nat res 813b 2nd St	2345
Botter's News & Fruit Store 652 3rd St	3456
Bowker C F res 541b 6th Ave	3034
Bowker P C res 138 9th St N	2591
Boyd Mrs Oliver res 22 View Court	3322
Boyd R S res 168 4th St SW.....	2716

BOYD WHOLESALE

Tobacconists and Confectioners 224 S Rly St	2402
Boylan J F res 506 Aberdeen St.....	3161
Boylan's Drug Store 607 2nd St	2202
Bradley's Tire Shop 310 S Railway St.....	3874
Bray H E res 514c Woodman Ave	3673
Breakell R A res 878a 4th St	3201
Brier H res 519 5th St.....	3601
Brinkhurst Mrs G res 827a 4th St	2549
Bristow H R res 871A 3rd St	2136

BRITISH AMERICAN OIL CO

LTD Industrial Site	3112
Bromley R E Welding Shop 692 S Railway St	3142
Bromley R E res 63 9th St	2611
Brookwick W J res 228 Aberdeen St	2343
Brotherton G res 178 8th St NE	3484
Brough R B res 379 5th St.....	3773
Brown M res 543 1st St.....	3563
Brown Wm res 11 8th St.....	3401
Browne C Barton res 542 5th St	2631
Browne H D res 218 2nd St SW	3282
Bryan J W res 512 10th St	3315
Buchanan W H res 460 2nd St	3029
Buchanan W H Jr res 403 4th St	2654
Bullen Mrs R res 421 6th St SE.....	3383

BULLIVANT ISAAC Shoe Store

216 South Railway St.....	2480
Bundy P W res 260 2nd St	3340
Burgess Miss Mary res 10 Montgomerie Apts.....	3103
Burns A P res 538 1st St	3341
Burns T A res 234 Aberdeen St.....	3739
Burton Wm A res 267 2nd St	2288
Burwash T A res 506D 6th Ave SE	2488
Butchart R G res 520b 6th Ave	3433
Butcher Rev J F res 623 4th St	2091
Byers C H res 25 2nd St SE	3982

C

Cairney J res 1134 Ross St.....	2073
Calder Robert res 478 8th St	2656

CALDWELL G A Decorator & Sign

Painter 426 4th St.....	3153
Caldwell G A res 436 4th St SE.....	3153

CALGARY HERALD Local Agent

Guy Austin 26 View Court	2979
Callbeck A A res 26 4th St.....	2776
Campbell Mrs D res 415 7th St	2740
Campbell Dr W C Physician & Surgeon Office	
826 2nd St SE.....	2030
Campbell Dr W C res 311 2nd St S E.....	3618

CANADA LAND & IRRIGATION

CO LTD Huckvale Blk.....	2428
D W Hays Gen Mgr res 36 1st St SW	2512
J D Fairless res 329 9th St	3514
Elliott G MacDonald res 77 4th St SW.....	3912

CANADIAN BANK OF COMMERCE

THE M H Smith Mgr 2nd St & 6th Ave.....	2026
Staff Apartments	3632
Canadian Greenhouses The Elm St	2704
Canadian Legion Club 2nd St.....	3135
Canadian Pacific Express Co Office CPR Station	2301

CANADIAN PACIFIC RAILWAY

Information re Passenger Trains	2406
GENERAL OFFICE—	
Superintendent J L Palethorpe	2426
Chief Clerk J M Gilmour	
Assistant Chief Clerk T A Montgomery.....	2442
Asst Supt A R Everts	
Asst Supt F W Nicks	
Division Master Mechanic J W Jackson	
Store Keeper and Car Foreman	3330
Division Engineer W L Codington.....	2587
B & B Master G A Stephen	2587
Yard Office	2127
Locomotive Foreman (Shops).....	2427

(Continued on next page)

Crystal Dairy Limited

2777

233 - 5TH STREET

2777

CANADIAN PACIFIC RAILWAY—Continued

PASSENGER DEPARTMENT—
 Ticket Office Rail & Steamship E Schmid.....2406
 Ticket Agent
 Baggage Room2406

FREIGHT DEPARTMENT—
 Freight Agent H H Hall.....2381
 Freight Office General Information for
 Rates etc2106
 Pick-Up And Delivery Service2104

COMMERCIAL TELEGRAPH—
 Telegraph & Cable Office S Railway & 2nd St 2254
 Manager's Office C D Hatch3852

Canham W R res 538 Bank St.....2387
 Cannings A G res 1059 Braemar St3525
 Carr Mrs F S res 222 4th St3464
 Cawker E M Druggist South Railway & 2nd St. 2178
 Cawker E M res 520 Cambridge St2132

CECIL HOTEL 4th St SE2851
 Private Branch Exchange connecting all rooms

CENTRAL CANADIAN GREYHOUND LINES J Briggs Agt 3rd St2101

CENTRAL GARAGE Ford Mercury & Lincoln Service Cor 1st St and 6th Ave3454
 } 3451
 Central Tea Room The 435 N Railway St2914

CHAMBER OF COMMERCE
 Cor S Railway and 2nd St2327
 Chamberlain R M res 558 Dundee St2267
 Charlton George S res 104 4th St S E3712
 Chocolate Shop The 515a 4th Ave3311
 Choiniere J res 929 5th St3425
 Chrestenson L F res 43 9th St2375
 Church W A res 112 1st St SW3348
 City Cafe 403 N Railway St2329

CITY OF MEDICINE HAT
 Mayor's Office City Hall3030
 City Clerk F Blackburn City Hall2326
 Treasurer's and Tax Office City Hall2326
 City Treasurer and Comptroller H J Noble.....3947
 Supt of Utilities H O Davis2726
 Engineer's Office E Ashburner3488
 E Ashburner City Engineer res 110 8th St NE 2726
 Purchasing Agent E A Bell2726
 Electric Dept F E Rathwell3494
 F E Rathwell City Electrician res 333 8th St. 2380
 Police Dept Capt J M Taylor Chief City Hall. 3552
 Capt J M Taylor res3535
FIRE HALL (Fire Alarm only) City Hall2992
 Fire Hall (General Use only) City Hall3838
 W E Hatcher Fire Chief res 513 1st St2665
 Gas and Water Dept2087
 R Bietz Gas and Water Formn res 137 3rd Ave2280
 R G Cairns Pub Wks Formn res 657 9th St2558
 Health Dept2503
 Electric Sub Station2912
 City Probation Officer2912
 City Relief Office Secy Miss M A Carson2769
 Miss M A Carson res 8 Connaught Apts3629
 Isolation Hospital Powell Sub-division
 Hillside Cemetery (Call 91 and ask for X202)
 Municipal Airport—(Call 91 and ask for X204)

City Pound 722 2nd St SE3303
 Clark William res 743 1st St SE3742
 Clarke Joe B res 418 Dundee St3506
 Clay R A res 339 6th St2450
 Clelland J Tailor 439 N Railway St3036
 Cobb Miss E res 1 Montgomerie Apts3973
 Cockburn Mrs S res 734 9th St2976
 Codrington W L res 360 1st St2684
 Coffee Pot The 619 2nd St2711
 Coffin A F res 538 6th Ave3318
 Collier George res 323 9th St3266
 Collingwood E res 203 2nd St3512
 Collins W res 835a 2nd St3268
 Colter D A res 128 8th St NE3160
 Congdon B A res 350 7th St SE3162
 Congdon K G res 263 6th St2585
 Connaught Golf Club 13th St3803
 Conner Nat res 47 2nd St N W3536
 Connor J W res Fewings Apts 247 2nd St2396
 Connors F B res 160 8th St N3717

COOK A B Jeweller & Optician 645 2nd St SE2378
 Cook Mrs Maude res 11 Montgomerie Apts2543
 Cooper Earl E res 233 1st St SE2395
 Cooper Geo res 277 5th St2551
 Cooper Miss Ivy D res 337 4th St3363
 Cope E L Plumber & Tinsmith 535 3rd St3448
 Cope E L res 410 Dundee St3583

CORONA HOTEL Owned and Operated by Cantalini Hotels Ltd 5th St3154
 Cory M A res 239 1st St SW2670
 Cosmopolitan Hotel The T Bassett S Railway St. 2052
 Coursey H W res 430 7th St2649
 Court House—(See Provincial Government)
 Court J E res 50 4th St SE2186
 Cousins-Elliott Ltd Bonds & Ins 217 6th Ave ...3347
 Cousins Wm res 271 1st St SE2084
 Cove H J res 931 Balmoral St3951
 Cox H W D res 453 7th St SE2955
 Crawford R res 358 Cambridge St3371
 Crawford Mrs Wm res 9 1st St SW2016
 Cresswell Mrs F E res 585 Hill Road3466
 Crockett James res 248 2nd St2651
 Crockford Geo H res 306 3rd St2554
 Crockford W H res 1172 Balmoral St3352
 Crowther Alfred res 1214 Bridge St3814
 Crysler Evelyn res 433 7th St2632

CRYSTAL DAIRY LTD T A Burwash Mgr
 233 5th St2777
 A T White res3329
 Cunliffe R T res 506 Belfast St2050
 Currie Miss Annie res 424 Dundee St3256
 Currie W M res 270 9th St SE3310
 Customs Canada Collector of Customs2567
 Cutts L G res 342 4th St3361
 Cuyler J T res 124 4th St SW2720
 Cypress Club Club House 6th Ave SE2179

Directory Advertising Pays

FIVE ROSES FLOUR

MANUFACTURED BY

LAKE OF THE WOODS MILLING CO., LTD.

PHONE 2155

MEDICINE HAT, ALTA.

D

Daniel J C res 222 Belfast St	3375
Darley D B res 503 5th St	3608
Darling Dress Shop The 628 2nd St	2240
DAVE'S MEAT MARKET 634 3rd St 3234	
C J Macara Mgr res	3235
Davidson James R res 27 4th St SW	3404
Davidson R B res 34 8th St	3890
Davidson T res 150 7th St SE	2213
Davies J E res 173 2nd St SW	2927
Davies W A res 69 4th St SW	3463
Davis H O res 251 6th St	2024
Davison P res 422 10th St	2970
Dawkins W S res 355 7th St SE	2916
Dawson Mrs Phyllis res 483 12th St	2536
De Coursey Miss Hazel res 963 Braemar St	3537
Dederer's Grocery & Meat Mkt 642 7th Ave	3222
Delong W J res 815 7th St SE	3046
Dennis W H res 444 4th St	2755
Devlin W J res 57 4th St SE	2465
DIXON DR HOWARD C Phys &	
Surg 234 1st St SE	3062
Dixon John res 321 4th St	2534

DODGE & DE SOTO SALES &

SERVICE Medicine Hat Garage 524 2nd St SE

2379

DOMINION BANK THE W S Ashley

Mgr 3rd St & 6th Ave

3663

DOMINION FRUIT LTD Wholesale Fruit & Tobacco Maple Ave & Queen St

Office

2929

Warehouse

2939

Dominion Govt PFRA 11 Post Office Bldg

2429

District Engineer Charles Moore

Dominion Govt Youth Training D Program

 Cor 2nd St & Allowance Ave

2337

Donaldson Mrs J res 744 4th St

2759

Donaldson J S res 710 Spencer St

3248

Douglas J W res 220 9th St SE

3592

Downing E res 232 4th St

2938

DOWSON E N 530 2nd St

2146

 Commercial Printing & Loose Leaf Supplies

 E N Dowson res 305 2nd St

2768

Doy T res 811 5th St

3230

Driscoll M res 1035 Ross St

2408

DUGGAN H O & CO Stocks and Bonds

 562 2nd St

3144

Duggan H O res 443 1st St SE

3510

Dunham F S res 236 Belfast St

2362

Dunn Dick res 537 Aberdeen St

2765

Dunn George A res 535 Belfast St

3077

Dunn Harold res 930 5th St

3023

Duxbury W H res 770 8th St

3275

E

EATON CO WESTERN LTD (THE T)

 Cor 3rd St and 6th Ave

 Office Dry Goods Toiletries Shoes Hardware

2942

 Furniture & House Furnishings

2949

Eaton Walter res 505G Allowance Ave

2637

Economy Grocery 803 7th Ave

3809

Eden R res 810 1st St

3861

Edmunds J R res 444 12th St

3098

Ekstrom L J res 170 7th St

2625

Elder Mrs A T res 1164 Yuill St

3458

Elder Dr G G Eye Ear Nose & Throat Office

 826 2nd St SE

2555

Elder Dr G G res 105 2nd St SW

3080

Elder Thos res 56 5th St

3567

Elite Barber Shop & Beauty Parlor 210 S Rly St

2349

Elliott Boulter J res 535 3rd St

3147

Elliott J Tailor South Railway St

2931

Elliott Mrs Mary E res 877a 3rd St

3727

Elliott W C res 118 5th St SW

2364

Ellis W H res 460 Cambridge St

3281

Ellison Rev H V res 1115 Yuill St

2253

Elm St Meat Market & Grocery 1152 Elm St

3111

Embree Geo W res 539c Maple Ave

2635

Emery G J res 420 8th St

3624

Emes Roland res 520 Aberdeen St

3558

Employment Service of Canada Alberta Govern-

 ment 661 3rd St

2222

English Mrs James res F-Hull Blk

2903

Evans T H res 122 7th St NE

2907

Everts A R res 428 1st St

2592

F

Fairless J D res 329 9th St

3514

FAMILY GROCERY A Spivack Prop

 1040 7th Ave SE

3252

Fawcett J G res 235 8th St

3435

Fewings E J res 320 2nd St

2107

Finch A G res 549 3rd St

3441

Finlay F B res 44 4th St SW

3039

FIRE HALL (FOR FIRE ONLY)

 Fire Headquarters

3535

FISH MARKET THE Fish and Chips

 561 3rd St

3442

Fisher Frank res 546 Belfast St

2436

Fisher Mrs Fred res 520a 2nd Ave

2731

Fisher H res 820 3rd St

2296

Fitzgerald J res 525 6th St

2760

Fix-it Shop Burkland & Noren 411 N Railway St

2044

Fleming Mrs M res 141 9th St SW

2150

Fleming W T res 388 10th St

2361

FLEMING W T CO THE Ladies' Ready-

 to-Wear 630 2nd St SE

3720

Fleming's Music House Royal Bank Bldg

2068

Flynn C T res 16 4th St

2268

Flynn L E res 252 8th St

2520

Foley P F res 544b 6th Ave

3780

FOODLAND Groceteria & Meats 225 6 Ave }

2123

Fooks' Barber Shop & Beauty Parlor 511a 4 Av }

2001

FORD SERVICE GARAGE Central

 Garage Cor 1st St and 6th Ave

3454

Foulston R A res 904 Braemar St

2447

Fountaine R C res 772 4th St

3737

Fowler Miss M res 510 8th St

3372

Fraser A L res 309 5th St

2486

Fraser W A Plumber 831a 3rd St

2144

FREEDMAN'S HIDE & FUR CO

 328 S Railway St

3113

Fryer F J res 280 Prospect Drive

3066

Funnell Wm res Capitol Bldg

2013

3

GREAT
MIXERS

Fethbridge
BREWERIES LIMITED

LIME RICKEY
CLUB SODA
DRY GINGER ALE



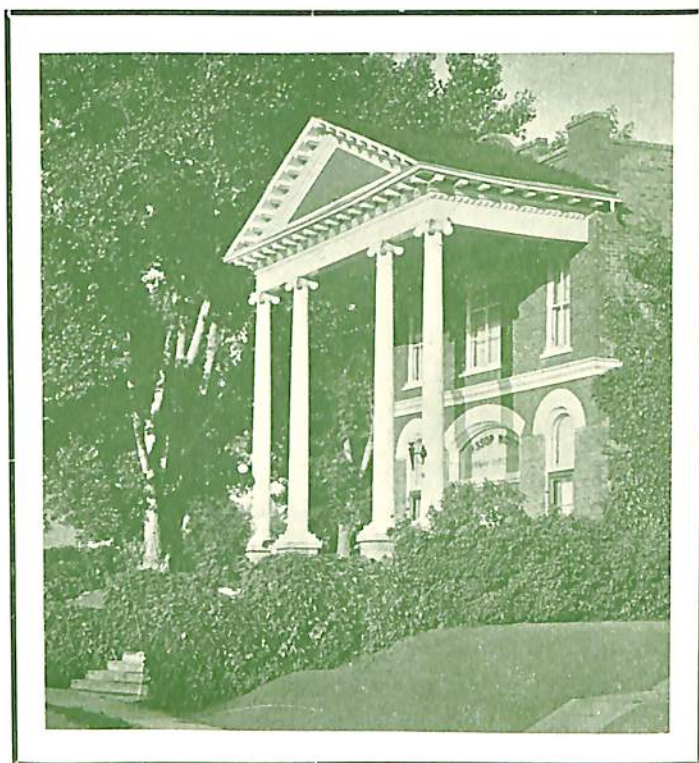
Beverages of Distinction

ON SALE EVERYWHERE

NOTT'S FUNERAL CHAPEL ❖



MONUMENTS



LINCOLN AMBULANCE SERVICE

SPECIAL EQUIPMENT FOR THE COMFORT
OF PATIENTS ON RAILWAY JOURNEYS

PHONE

2306

321 5th STREET S.E.

MEDICINE HAT

G

Gaffney S F res 355 9th St SE	2614
GAINSBOROUGH STUDIO THE	
George Brown Photographer 651 2nd St	3305
Galbraith James res 5 2nd St SW	2335
Gale D B res 151 7th St SW	3695
Galloway J E res 1015 3rd Ave S	2243
Gallup Mrs Myrtle res 1038 Ross St	2674
Gant A res 477 3rd St	2336
GARBUTT BUSINESS COLLEGE	
523 3rd St	2394
Gargett Edward res Marlboro Place	2715
Garland Miss M res 217 Aberdeen St	3374
Gas City Flour Mill Co Spencer St	3770
GAS CITY PLANING MILLS	
A P Burns Office 1st St SE	2229
George H W res 351 Aberdeen St	3545
Gershaw Dr F W Phys & Surg Office 826 2nd St SE	2030
Gershaw Dr F W res 361 1st St	3614
Gibb J W res 1240 3rd Ave	2357
Gibson A K res 251 11th St	2350
Gibson C V Groceries 401 Aberdeen St	3953
Gibson C V res 251 11th St	2350
GIBSON DR G ROSS Dentist	
640 2nd St SE	2180
Gibson Dr G Ross res 504 Cambridge St	3280
Gibson Jas res 366 6th St	2583
Gilchrist Miss M L res 60 1st St NW	2738
Giles James W res 472 11th St	3670
Gillespie John res 503 Dundee St	3707
Gillis G A res 526c 5th Ave	3423
Gilmour J M res 5 View Court	3680
Gleaves Geo N res 224 7th St	2216
Goff J res 869a 5th St	2386
GOFF'S GROCERY	
541a Allowance Ave	3012
Goldie Hugh res 519e Allowance Ave	2956
Goode W M res 138 2nd Ave SE	3060
Gordon Miss M E res 69 1st St NW	2987
Gordon R A res 753 Spencer St	3796
Gordon Ralph O res 669 9th St	3634
Gospodar P A res 52 10th St N	2702
Government Liquor Store 523 3rd St	2360
GOW WALTER D Barrister	
667 2nd St	3351
Gow Walter D res 210 2nd St SW	2463
Graden W R res 876 Braemar St	3243
Graham A H res 245 8th St	2653
Graham Thomas res 526c 4th Ave	2662
Graham W T res 307 7th St	3438
GRAHAM'S GROCETERIA	
Store No 1 544c Princess Ave	2628
Store No 2 395 Aberdeen St	3638
Grain Inspector's Office 203 Huckvale Blk	3366
Grant D S res 66 Aberdeen St	3603
Grant G S res 525b 4th Ave	2234
Gray Mrs W H res 8 Aberdeen St	2732
GRAYSON FEED STORE Mulligan Blk	
6th Ave	3657
Greene Mrs Geo W res 77 1st St SW	3145
GREYHOUND TRAVEL BUREAU	
3rd St	2101
Gunn James res Gunn Apts 3rd St	2324
Gust Mrs L E res 439 5th Ave	3427
GUST S E STORES THE	
No 1 Store 626 3rd St	2502
Gustafson S R res 855 Braemar St	2730

H

Hall F res 29 10th St	3148
Hall H H res 460 Cambridge St	3281
Hall W res 364 10th St SE	2002
Hallworth J H Plbg & Htg 1003 Ross St	2561
Hamilton Mrs J W res 448 Division Ave	2657
Hamilton J W res 369 5th St	3390
Harding Mrs W F res 677 7th Ave	3132
Hardy R H res 759 4th St SE	3038
Hargrave Miss Edith M res 156 3rd St N	2011
Harper Miss Mildred E res 864 3rd St	3631
Harrison R W res 444 8th St SE	3778
Harrison William res 137 2nd Ave	2713
Hartley A E res 443 Dundee St	3432
HARWARD'S HOUSE OF FLOWERS	
231 6th Ave	2233
E Ward res	2130
Miss Mildred E Harper res	3631
Hat Grocery M L Wright 507b Allowance Ave	2012
Hatch A J res 503 5th St	2958
Hatch C D res 264 Aberdeen St	3870
Hatcher W E res 513 1st St	3838
Havard R E res 340 5th St	3205
Haworth R E res 519 Belfast St	3930
Hawthorne A C res 253 3rd St SE	2088
HAWTHORNE A C & SON LTD	
Men's Clothing 234 S Rly St	2523
Hawthorne Don S res 558 Cambridge St	2766
Hays D W res 36 1st St SW	2512
Hediger Rev Paul R res 1120 Yuill St	2770
Hedley Shaw Milling Co Ltd—See Maple Leaf Milling Co Ltd	
Hedlund Albert res 225 3rd St S E	2314
Hehr E res 1002 Allowance Ave	2312
Hehter G Massey-Harris Dlr 329 N Railway St	3701
Henderson Mrs W W res 520 Belfast St	3522
Herrington Miss Jean res 808 2nd St	2231
Hider R G res 306 7th St	2686
Hill John res 216 7th St	3746
HILL SERVICE GARAGE THE 351	
Cambridge St	2446
G J Emery Prop res	3624
Hobday A res 829a 5th St SE	2356
Hoffman T res 1051 5th St	2959
Hole James res 1027 Ross St	3562
Holley Ernest res 554 11th St	3763
Hollingworth Rev W D Grant res 258 1st St	3619
Holmes A H res 405 12th St	2714
Homer Mrs Alice res 336 7th St	2263
Homer H E res 362 7th St	2163
HONALD SIGNS Dominion Bank Bldg	
Hooper Mrs A W res 1122 Ross St	3019
Hooper Albert res 43 9th St NE	2245
Hopper L H res 5 1st St SE	2764
Horne K res 384 10th St	3850
Hosie Miss Bessie res Elm St School House	2115
HOSPITALS	
General Hospital 2nd St SE	2126
Maternity Hospital Ash Ave	3342
Hotson G E res 460 10th St	2082
Houlden A H res 320 8th St SE	3254
Howson Geo res 32 3rd St SW	2966

An Extension Telephone
Costs Only
A Few Cents a Day!

Hub The Harry Fefferman 228 S Railway St	2457
Huckvale Mrs W res 251 1st St	2008
Hudson C A res 244 5th St	3784
Hughes Albert res 605 1st St	3450
Hughes Miss Eileen res 265 6th St	3171
Hughes M res 266 7th St	3424
Hunt C S res 392 10th St	2373
Hunt's Plumbing & Battery Service 544 3rd St	3014
Hutchings H R res 521 Dundee St	3489
Hutchinson T res 50 2nd St SE	3274

HUTCHINSON T CO LTD THE

623 3rd St SE	2064
H R Hutchings Prop res	3489
Hyde Miss Willena res 427 Dundee St	2496

I

Imperial Oil Limited A Irwin Agt Industrial Site 3003	
Imperial Service Station Cor 5th Ave & 3rd St	3388
Inglis Gordon res 548 7th St S	3412
Ingram T N res 488 8th St SE	2124
International Harvester Co Agcy 746 2nd St	3005
Ireland H S res 861 1st St SE	2388
Ireland H W res 333 2nd St SE	2207
Irvine A D res 222 5th Ave	3607
Irwin Mrs A res 1052 Ross St	2642
Isolation Hospital Powell Sub-division	3629
Isom Walter A res 44 8th St NE	3071
Isaac Miss Edith res 171 3rd St NW	2236

J

Jackson J W res 17 Diana Court	2320
Jam Chong Market Gardener 1st St NW	3667
Jamieson R W res 442 Dundee St	2307
Johnson Claude E res 111 11th St	3058
Johnson F N res 521b 5th Ave	3317
Johnson Percy res 382 13th St	3841
Johnson R T res 429 8th St SE	2742
Johnson Wardin res 522a 3rd Ave	3580
Johnston W C res 172 4th St NW	3909
Jones S E res 241 3rd St S	2277
Jordan H E Snappy Tailors 664 2nd St	3226
Jordan J S Real Estate & Ins 526 2nd St	2940
Jordan J S res 130 5th St SW	2984
Jorgensen T res 16 Diana Court	2232

K

Keating R E res 12 5th St SW	3817
Kelly Miss Eleanor J res 929 Dominion St	2313
Kennedy W A res 416 Belfast St	3963
Kent Alan G res 33 5th St	2092
Kent C J res 413 5th St	2525
Kent J C res 405 5th St	2983
Kent R H Insurance 528 2nd St SE	3553
Keohane J res 554 Cambridge St	2687
Ker J H res 571 10th St SE	3832
Keyes C M res 521 Cambridge St	3819
Kilduff Thos res 482 8th St	3044
Killins R W res 815 8th St SW	3195
King E res 437 1st Ave NW	3547
Kinnaird Thos res 800 Allowance Ave	3682
Kinnaird's Transfer 513c North Railway St	3656
Kinvig T G res 365 Belfast St	2571
Klaiber & Nichols John Deere Agts 740 2nd St	3182

KLEMM ELECTRIC R Klemm 120

S Railway St	3224
Klemm R res 1020 Ross St	3824

Knight Mrs E res 438 11th St SE	2423
Knight Mrs K res 106 5th St	2331
Knight Thos W (CPR) res 347 Aberdeen St	2438
Knight W res 38 6th St SW	2793
Knodel Mathias Grocery & Meat Mkt 619 7th Ave	3760

KNOWLES ELECTRIC Maurice Knowles

510c Allowance Ave	2108
Kohn Louis res 176 1st St SW	3555
Kyle Arthur H res 527 Belfast St	3527

L

Lacey R H A res 96 3rd St	3733
Laidlaw Lorne res 24 1st St SW	2933
Laidlaw Niblock & Stone Barristers Bank of Montreal Chambers	2128
Laing—see also Lang	
Laing D V res 837-A 3rd St	3729

LAKE OF THE WOODS MILLING

CO LTD (Five Roses Flour) South Rail- way St	
Sales Dept	2155
Grain Dept	2055
Colin A Moir Manager	2255
F Tonkin Mill Supt res	2157
D C McIntyre res	2660
Colin A Moir Manager res	2655
La Marsh Mrs I res 503 1st St	2574
Lamb Andy res 212 13th St	2589
Lambert H W res 511 Dundee St	2725

Lang—see also Laing

LANG BROS LIMITED Insurance Fire

Automobile Burns Block 651 2nd St SE	3554
Lang Hector res 538 7th St SE	3658
Lauder G W res 1075 Dominion St	3687
Lawrence J Huver res 550 10th St	3158
Laws Mrs Walter res 92 3rd St SE	2580
Layton Rey R B res 45 8th St	3532
Lefever D A res 278 2nd St	2315
Lefever H A res 626 Spencer St	3457
Lem Blick Barber & Beauty Shop Huckvale Blk	2414
Lent B res 530B 6th Ave	3324
Le Page A J res 125 1st Ave SW	2712

LE PAGE STORE THE General Mer-

chants 640 3rd St	3877
-------------------------	------

LESK'S FURNITURE EXCHANGE

627 3rd St	3664
Leveque Russell P res 244 Aberdeen St	2928

Levinson Joe L Raw Furs & Hides 314 South Railway St	2160
---	------

Lewis Harry res 436 2nd St SE	3378
-------------------------------------	------

LEWIS DR L Phys & Surg 9 Hull Blk

Dr L Lewis res 247 2nd St	2027
---------------------------------	------

Lindsay J D res 12 View Court	2538
-------------------------------------	------

Lindsay Robert A res 262 4th St	2118
---------------------------------------	------

Linfield C A res 639 9th St SE	2552
--------------------------------------	------

Lippert & Sailer Garage 645 7th Ave	2410
---	------

Little Beauty Salon The Edith Jesse 645 2nd St	2630
--	------

Little F G res 314 7th St	3666
---------------------------------	------

Lockwood A S res 220 4th St	2443
-----------------------------------	------

London Life Insurance Co Dominion Bank Bldg H J McCallum & H M Roche Reps	3531
--	------

Lovett W S res 6 12th St	2753
--------------------------------	------

Ludwig H res 488 9th St	2648
-------------------------------	------

Lund J A res 802B 5th St	2041
--------------------------------	------

Lutes W A res 116 5th St SE	2741
-----------------------------------	------

Lutes Willard D res 414 10th St	3660
---------------------------------------	------

Lynch Miss J res Purmal Sub-division	2926
--	------

Use Long Distance

PATTISON FUNERAL HOME

PHONE

2214

Funeral and Ambulance Service

AGENTS FOR MONUMENTS

Corner 5th Avenue and 2nd Street

PHONE

2214**M**

Maarion Dorothy Select Beauty Salon 640 2nd St	2545	May Albert D res 240 Aberdeen St	3422
Mac's Cigar & News Stand 615 2nd St	2460	May Gordon F res 247 2nd St	2242
Macara C J res 10 Diana Court	3235	Mayberry T R res 1031 5th St SE	2417
MacArthur Mrs M res 411 9th St	2638	MAYFAIR THE Ladies' Ready-to-Wear 601 2nd St	3888
MacCallum James L res 153 2nd St SW	3966	MAYNARD'S AUTO TRANSFER Herbert Maynard Prop 488 11th St	3165
MacCharles Dr D N Phys & Surg Office 826 2nd St SE	2030	McAffer R res 728 Spencer St	3167
MacCharles Dr D N res 874 2nd St SE	2029	McArthur G L res 536 Cambridge St	2235
MacDonald C A Painter & Decorator 764 3rd St	3217	McBain H E res 45 2nd St SW	2167
MacDonald Duncan res 150 2nd St NE	2762	McCaig Lorne res 1028 9th Ave	3440
Macdonald Elliott G res 77 4th St SW	3912	McCallum H J res 332 Aberdeen St	2542
MACDONALDS CONSOLIDATED LTD Wholesale Grocers N Railway St		McCaslin John E res 803a Braemar St	3091
Sales Dept	2745	McColl-Frontenac Oil Co Ltd S Rly St	2022
Shipping Dept	2744	McCOMB F J Electrical Contractor 655 2nd St SE	2573
Manager & Credit Dept	2080	McComb F J res 924 Dominion St	3901
MacGregor A Cartage & Transfer 206 Aberdeen St	3690	McCombs J A res 852-A 5th St SE	2359
MacGregor Mrs Margaret res 430 4th St	3491	McCombs W E res 839-A 5th St	3475
MacGregor Wm res 866 4th St	2703	McCoy Rev E J res Altwana	2265
MacKenzie—see also McKenzie		McCully Mrs J res 509 3rd St	2710
MacKENZIE DRUG CO 423 N Railway St	2667	McDougall Mrs A L res 361 9th St SE	3544
MacKenzie K C res 154 1st St SW	2636	McDougall D L res 28 2nd St SW	2449
MacKenzie N R res 359 Cambridge St	3602	McEwen Dr S F res 550 Belfast St	3024
Mackinlay Mrs A res 16 Montgomerie Apts	3839	McGee J G res 164 3rd St SW	3011
MacKinnon M res 443 Aberdeen St	3260	McGowen Barber Shop & Beauty Salon The 639 2nd St SE	3051
Macleod—See also McLeod		McGregor—See MacGregor	
MacLeod Mrs Annie res 423 12th St	2340	McIntosh Geo res 1163 Balmoral St	3402
MACLEOD DR J S Phys & Surg Office 419 1st St SE	3365	McIntyre D C res 133 3rd Ave	2660
Magee Miss Edna L res 508d 5th Ave	2218	McKay Ross res 539 Dundee St	2579
Maher L A res Empress Theatre 6th Ave SE	3116	McKay T M res 852 2nd St	2382
Man Yick Hing Grocery 515a N Rly St	2541	McKEE DR E L Dentist 654 3rd St SE	3945
Manarey G E res 205 2nd St	2577	McKenzie—see also MacKenzie	
Manning T W res 817a 3rd St	2348	McKenzie Wm res 383 10th St	3626
MAPLE LEAF MILLING CO LTD Industrial Site	2831	McLane J W res 246 2nd St SW	2968
General Office & Order Desk	2831	McLennan J W res 303 8th St	2317
R G Butchart Manager	2833	McLeod—See also Macleod	
J Elder Asst Manager	3360	McLeod A res 505 Aberdeen St	2746
R M Robertson Sales	3360	McLeod D W res 875 3rd St	3467
R G Butchart Mgr res	3433	McMann Mrs David res 558 4th St	2141
Marr C M res 1121 4th Ave	2680	McMaster J B res 540 6th Ave	2425
Marsh F Garage & Auto Wrecker 1221 7th Ave	2031	McNaughton A S res 85 4th St	3866
Marsh J P res 482 10th St	3561	McNichol Mrs P H res 78 1st St	3955
MARSH PLUMBING & HEATING 650 3rd St SE	3655	McQueen Fred W res 364 4th St SW	2935
Marshall A E res 103 7th St SW	3355	McQueen Peter res 540 Aberdeen St	3043
Marshall Val res 238 4th St SW	2198	McWaine Fred res 1054 Yuill St	2618
MARSHALL'S BOOK STORE General Stationery Office and Legal Supplies 621 2nd St	3633	Medalta Potteries Ltd Industrial Site	3585
Martin's City Transfer 1254 Queen St	2507	Medicine Hat Airport Medicine Hat	3040
Martyn C D res 28 View Court	3483	MEDICINE HAT BAKING CO LTD See Weston's Bread & Cake (Canada) Ltd	2501
Masonic Hall Lodge Rooms 4th St SE	2377	MEDICINE HAT BRICK & TILE CO LTD Industrial Site	2493
Maternity Hospital Ash Ave	3342	H J Sissons Mgr res	3090
Matthews E E res 20 2nd St SW	3031	Medicine Hat Cartage 845 7th St SE	3143
Matthews Harry res 30 7th St NE	3208		
Maxwell T A res 310 Ash Ave	2010		

**DIRECTORY
ADVERTISING
PAYS**

MEDICINE HAT CLINIC 826 2nd

St SE	2030
Dr F W Gershaw	2030
Dr D N MacCharles	2030
Dr W C Campbell	2030
Dr G G Elder	2555
Dr S F McEwen	2555
Dr B C Armstrong	2555
Dr F W Gershaw res	3614
Dr D N MacCharles res	2029
Dr W C Campbell res	3618
Dr G G Elder res	3080
Dr S F McEwen res	3024
Dr B C Armstrong res	3884

MEDICINE HAT GARAGE 524 2nd

St SE	2379
Dodge & De Soto Cars & Dodge Trucks	
George Atkinson Mgr res	3146
Medicine Hat Golf Club Medicine Hat	3191

MEDICINE HAT GREENHOUSES

LTD Successors to Rosery Flower Co 10th Ave SE	2431
Nights Sundays & Holidays	
R M Morris Manager res	2330

Medicine Hat Ice Co 39 Division Ave 3702

Medicine Hat News Ltd The Business Office &

Job Printing 6th Ave SE	2028
Editorial Office	3452

MEDICINE HAT POTTERIES

Industrial Site	3575
-----------------	------

MEDICINE HAT POULTRY

PRODUCTS 634 3rd St	3234
---------------------	------

MEDICINE HAT STEAM LAUNDRY

CO LTD Office 873-A 2nd St SE	2005
-------------------------------	------

Megley Michael H res 262 Belfast St 3844

Mennear Martin res 112 11th St Cres Hghts 2706

Metzner Wm res 250 Division Ave 2529

Michie Wm res 161 7th St 3590

Middleton C res 738 3rd St 3564

Middleton Ed res 177 3rd Street 3950

Middleton J L res 436 Belfast St 3225

Miller W res 166 7th St 2634

Millican F R res 4 5th St SW 3377

MILLS' GREENHOUSES T E Mills

Prop 1035 Yuill St	2227
--------------------	------

Milne E L res 319 8th St SE 3264

Minor G H res 38 4th St NW 2601

Mitchell Archie H res 419 5th St SW 3677

Mitchell Jas res 504 1st St SE 2161

Mitchell Jas Feeding Co Factory St 3129

Mitchell Miss M res 305 1st St 2516

Mitchell Robert res 227 1st St 3255

Modern Cafe The Chow Hoy 427 N Railway St 2435

Mogridge Wren res 356 11th St S 3855

Moir Colin A res 553 5th St 2655

Mollard J E res 396 Belfast St 3336

MONARCH THEATRE CO LTD

609 2nd St	2603
------------	------

L A Maher Mgr res	3116
-------------------	------

J H Yuill res	2485
---------------	------

Monkley L res 512-C 6th Ave 3854

Montgomery Bert res 462 4th St 3960

Montgomery Mrs G E res 445 7th St 3002

Montgomery T res 17 9th St 3045

Moody F res 76 9th St NE 3597

Moore Mrs Fannie W res 222 4th St 2165

Moore H A res 430 Cambridge St 2788

MOORE J J & SON Furniture Store

532 2nd St near Medicine Hat Garage	2787
-------------------------------------	------

H A Moore Mgr res 430 Cambridge St	2788
------------------------------------	------

Moore Dr Milton L Dental Surg 644 2nd St 2627

Moore Dr Milton L res 613 5th Ave SE 3684

Moore T A res 323 Aberdeen St 2252

Moose Lodge 1141 Elm St 3860

Morris E J res 338 4th St 3181

Morris E L res 27 View Court 3386

Morris R M res 965 4th St SE 2330

Morris William R res 43 Aberdeen St 2363

Morrison Helen T res 117 11th St 3134

Morrison Miss I Dry Goods 517a 4th Ave 3516

MORRISON DR J D Dentist Porter Blk 3277

Morrison Dr J D res 26 1st St 2568

Morrison James res 489 7th St 3169

Morrison M res 553 Cambridge St 2761

Morrison O J res Pottery St 3858

Morrison Vincent res 167 1st St SW 2139

Morrison W res 311 4th St 2922

MORRISON'S CITY BAKERY

613 3rd St 3227

Morrow Mrs J W res 414 1st St 2238

Moyer J L res 34 4th St 3052

Mulholland W res 342 8th St 3359

Munro J G res 1210 7th Ave 3750

Muredie Beauty Salon Myrtle Fleming 326 7th St 2338

Murphy A W res 449 9th St 3124

Murphy P J res 60 5th St SE 2504

Murray A res 945 5th St SE 2526

Murray Thos res 114 3rd St NE 2120

MURRAY'S BEAUTY STUDIO

659 3rd St 2677

Muxworthy R D res 808B 4th St 2945

My Wardrobe Cleaning & Pressing 565 2nd St SE 2505

N

Naismith J M Dental Laboratory 367 2nd St 3130

Napier R M res 61 2nd St SW 3186

Napper C res 40 8th St SE 2461

NASH-SIMINGTON CO LTD

See Dominion Fruit Ltd

Nason W E res 1003 3rd Ave 2223

National Fruit Co Warehouse S Railway St 2272

Office 3569

National System of Baking 617 2nd St 2675

Nelson Miss Marjorie V res 387 5th St 3910

Nelson Mrs Robt res 203 N Railway St 3710

Nesting Mrs T O res 506b 6th Ave 3474

NEW CLUB CAFE 638 2nd St 3202

Newcombe Arthur P res 342 Cambridge St 3534

NEWS THE Business Office and Job

Printing 6th Ave SE 2028

Editorial Office 3452

Niblock C W res 71 5th St SW 3486

Nichol Robert M res 860 3rd St 3789

Nicholson D res 57 7th St SE 3708

Nicholson D A res 20 4th St 2980

Nicholson H A res 219 5th St S 2790

Nicks F W res 14 View Court 2535

Nimmo G C res 160 3rd St SW 3685

Nixon D L res 427 5th St 2276

Noble H J res 137 8th St NE 3979

Noble W A res 749 1st St 2733

Noonan J B res 41 4th St 2444

NORRIE & FAWCETT LTD

Farm Implements South Railway St 2668

Norrie J A res 856 4th St 2466

Norris D A & Co Elect Appliances 635 3rd St 3650

Seventy Seven Oil Company

DUBBS CRACKED

DAN CURRIE, Local Manager — WE ACCEPT TREASURY VOUCHERS
3177 SOUTH RAILWAY STREET 3177

Q

- Quaill J J res 53 1st St SW2036
- QUEEN STREET GROCERY 976**
- Queen St2998
- Quesnelle J H res M Hull Blk2537
- Quinlan W C res 47 4th St SE3639

R

- RAE HARDWARE 629 3rd St2918**
- Read P res 162 7th St2325
- Ready T V res 329 1st St SE2678
- Reburn R J res Library Bldg2032
- Red Cross Headquarters 7 Post Office Bldg3048
- Red Head Service Station 699 7th Ave2919
- Reed—see also Reid
- Reed R C res 352 1st St2468
- Regent Billiard Room The 2nd St SE3675
- Reid Misses res 12a Hull Blk2754
- Reilly—see also Riley
- Reilly E res 1104 Allowance Ave2455
- Reilly-Kent Agency The Customs Brokers
528 2nd St SE3553
- Reliable Western Cartage 722 2nd St SE3303

REVELSTOKE SAWMILL CO LTD

- East Allowance2153
- L F Chrestenson Mgr res 43 9th St2375
- Rex Cafe Kwong Lee 431 N Railway St3236
- Richardson A res 125 8th St3504
- Richardson B B res 238 4th St W2198
- Richardson C W res 121 1st St SW3086

RICHARDSON'S BAKERY 720 4th St 3233

- B B Richardson res2198

RICHARDSON'S MEAT MARKET

- 507a 4th Ave2518
- Riches P L F res 17 1st St2913
- Riley—see also Reilly
- Riley W res 146 2nd St NW3094

RITCHIE BEAUTY SHOP Olive Ritchie

- 20 Hull Blk2923

Roach—see also Roche

- Roach A J res 322 12th St3887
- Robertson John res 685 7th Ave2007
- Robertson R M res 441 Cambridge St3669
- Robertson T res 716 11th St3715
- Robinson Mrs Elizabeth res 143 11th St3515
- Robinson James res 111 1st St SW3482
- Robinson James W res 176 3rd St NE2311
- Robinson Dr John L res 147 10th St N3389

Roche—see also Roach

- Roche Mrs C M H res 219 1st St3415
- Rogers C N res 543 Cambridge St3288
- Roosa Mrs P res 912 S Railway St3188
- Rose Mrs W A res 537-B Maple Ave3765
- Rose W G O res 367 7th St3606

ROSEY FLOWER CO See Medicine Hat

- Greenhouses Ltd2431

ROXBURGH & MULLIGAN Barrs

- & Solrs Royal Bank Chambers2404
- W G Roxburgh res3276
- Roxburgh W G res 55 2nd St SE3276
- Roxburgh W N res 55 2nd St SE3276
- Roxy Theatre 317 6th Ave2339

ROYAL BANK OF CANADA

- R H A Lacey Mgr 3rd St SE2477
- Royal Billiard Room 222 S Railway St2403
- Royal Canadian Mounted Police 375 1st St2658

ROYAL HOTEL Walter Calhoun Mgr

- S Railway St2177
- Royal Service Station 3rd St2333
- Russell E H res 52 1st St SW3117
- Rutherford A W res 512 Belfast St3115
- Rutherford W R res 544 Aberdeen St2767

S

- Sadler Mrs S R res 360 11th St3428
- St Therese Academy 7th St NE3992
- Sammon L P res 833 3rd St2334
- Sanders Walter V res 245 3rd St3259

SAVOY CAFE 2nd St.....2133

- Scarlett F H res 49 8th St3125
- Scarlett Taxi 645 3rd St3333
- Schmid E res 121 7th St3101
- Schneider Henry H Auctioneer 639 3rd St2203
- Schneider Henry H res 830 Balmoral St2204
- School Divisions 4 & 5 Office Royal Bank Bldg 3316

SCHOOLS

- Medicine Hat School Board Office3178
- Supt of Schools P L F Riches2527
- Schram F H res 607 4th St2784
- Select Beauty Salon The 640 2nd St2545

SERVICE HARDWARE LTD THE

- 624 3rd St2076
- Seventy-Seven Oil Co S Railway St3177
- Sexton J res 46 7th St NE2072

SHAMROCK BOTTLING WORKS

- Park Drive2533
- Shannon Gordon res Dunmore Rd3008
- Sharp Mrs N res 541b Allowance Ave2633
- Sharp W J res 441 3rd St NW3769
- Shaw Mrs A res 38 4th St NE2244
- Shaw S H res 129 8th St3533
- Shember Frank res 1006 Queen St2208
- Shepherd R F Auctr & Sec Hd Furn 657 3rd St 2705
- Shepherd R F res 341 3rd St SE3766
- Shore & Co Clothing Store 415 N Railway St2528
- Shore M res 803a 4th St3908
- Short S Barrister Dominion Bank Bldg3531
- Short S res 141 4th St SW3272
- Silver's Store Ladies' Ready to Wear 656 3rd St 2413
- Simpson P M res 1124 Dominion St2756
- Sinclair E R res 322 4th St W3279
- Singer Sewing Machine Co O Russell 639 2nd St 2613
- Sissons Herbert J res 363 Cambridge St3090
- Slack Dr A E res 134 3rd St SW2962
- Slack Dr Edwin A res 6 View Court3962

SLACK & SLACK DRS Dentists 569

- 2nd St2433

USE LONG DISTANCE

PATTISON FUNERAL HOME

PHONE

2214

Funeral and Ambulance Service

AGENTS FOR MONUMENTS

Corner 5th Avenue and 2nd Street

PHONE

2214

Slemko J H res 221 11th St	3646	Thirlwell Tom res 427 7th St SE	3028
SLEMKO'S TIRE SERVICE 324 6th Ave SE	3882	Thompson Robert res 481 7th St	2961
Smeaton A M res 60 9th St N	2986	Thompson T W H res 276 Belfast St	3642
Smith Dr Allison Dentist 25-27 Huckvale Blk	3447	Thomsen R M res 455 10th St	2279
Smith Dr Allison res 284 6th St SE	2262	THOMSEN'S CARTAGE & TRUCK TERMINAL 213 N Railway St	3131
Smith Merritt H res 375 2nd St SE	2035	R M Thomsen Mgr res	2279
Smith R D res 311 N Railway St	2212	Thomson J F res 110 8th St	2707
Smith Robert B res 806b 2nd St	3777	Tingley H A res 308 Aberdeen St	3649
Snappy Tailors H E Jordan 664 2nd St	3226	Tobin Mrs Mary res 385 4th St	3339
Snell H B res 36 8th St N	3102	TODD'S GROCERY 317 6th Ave	2531
Sodero P M res 421 8th St	3063	Tom's News Stand T G Allan 620 3rd St	2270
Solley S F res 844-A 4th St SE	2439	Tom's Service Station T E Graham Allowance Ave	3231
SOUCH B F Optical Parlors 237 6th Ave	3020	Tombling A res 438 Cambridge St	3768
Souch B F res 304 2nd St SE	2209	Tonkin F res 508c 5th Ave	2157
South Eastern Alberta Co-op Assn Ltd 503 N Railway St	3331	Top Hat Taxi 652 3rd St	3456
Spotswood M M res 18 Diana Court	3939	Trans-Canada Air Lines Resv Agt 8 Aberdeen St	2732
Sprague S W res 336 8th St SE	3539	Treece W M res 70 Aberdeen St	2189
Squance J R res 341 8th St	2947	Trotman James L res 19 8th St	3364
Star Meat & Grocery Store Cor Allowance Ave and Queen St	2043	Tufford J D res 1226 3rd Ave	3654
Steedman E R res 42 4th St	3840	TURNER N Plumber & Gasfitter 466 11th St	2445
Steele Mel A res 322 10th St	3075	Turner W M O Rental & Ins 15 Becker Blk	2693
Steeves Mrs M M res 545 Dundee St	2967	Tweed F E res 531 10th St	2411
Stephen G A res 18 View Court	2284		
Stevens Walter B res 327 2nd St SE	3061	U	
Stewart H res 429 1st St SE	2211	UNIVERSAL GARAGE P Piegl Prop S Railway St	3524
Stewart R A res 349 Aberdeen St	2640		
Stone Maurice H res 29 2nd St SW	2246	V	
Stone Mrs P D res 11 4th St SE	3862	Vallis J R res 373 Aberdeen St	2065
Strobel E G res 769 3rd St	2287	Veiner H res 542 9th St	3334
Strobel E G res 509a 6th Ave	2281	Volway P E res 138 7th St NE	3304
Sturgess F Taxi 738 4th St	2112		
Sutherland Mrs A res 261 Aberdeen St	3786	W	
Sweet H C res 534 11th St	2595	Wagstaff C res 227 Aberdeen St	2691
		Wait N A res 137 1st St SW	3579
T		Walker G F res Dunmore Rd	2352
Tai Kong Greenhouse Co Industrial Ave	3232	Wall J H res 239 2nd St SW	3166
Taylor A C res 346 3rd St	3416	Wallace S A res 533 Cambridge St SE	3136
TAYLOR BROS Groceries Fruit etc 648 2nd St SE	2131	Wallis Mrs J W res 144 8th St NE	3176
	2151	Wans S res 348 Aberdeen St	3724
Taylor C R res 233 2nd St	3244	Ward E res Fewings Apts 247 2nd St	2130
Taylor D res 514d Woodman Ave	3297	WARHAM'S CARTAGE 968 Braemar St	2453
Taylor J H res 404 1st St	3462	Washburn Mrs A res 510 3rd St	2464
Taylor Capt J M res 170 9th St	3552	Watkin H res 412 Cambridge St	3745
Taylor S C res 225 1st St SW	3576	Weaver R W res 19 10th St	3413
Taylor Thos J res 426 Prospect Drive	3033	Weeks C D res 127 1st St SW	3159
Teel A res 646 S Railway St	2794	Weiss Conrad res 958 Bridge St	3022
Teel E A res 1018 Balmoral St	2915	Welling Mrs M res 433 10th St	3728
TEEL MEAT MARKET 503b Allowance Ave	2620	WESTERN MEAT MARKET Meats and Groceries 608 3rd St SE	2054
Terminal Cafe Greyhound Bus Depot 3rd St	2101		
Terrill A J res 10 1st St SE	2663		
Terry Len res 503 12th St	2376		
TEXAS CO OF CANADA LTD THE Distbr Texaco & McColl-Frontenac Petroleum Products S Rly St	2022		
Geo H Crockford Agt res	2554		
Service Station J M Pettit Cor 1st St & 6th Ave	3070		

Use the "Yellow Pages"
When you don't know
where to BUY.

Weston's Bread and Cake (Canada) Limited

Cor. 4th Street and 3rd Avenue S.W.
:: 2501 ::

WESTON'S BREAD & CAKE

(CANADA) LTD 4 St & 3 Ave SW.....	2501
W M Treece Mgr res	2189
Westwood Mrs Geo res 820a Braemar St	2459
Wharton Robert J res 68 2nd St	2622
Wharton W J res 876 Braemar St	3243
White Mrs A M res 441 Belfast St	3273
White A T res 446 Cambridge St	3329
White Geo Esmonde res 521 10th St SE	2470
White Lee res 830a 5th St	2723
White Lunch 230 S Rly St	3993
White Percy res 276 1st St	3495
White S res 837 1st St	3107
White Sidney W res 53 Aberdeen St	3308
White Spot The 667 2nd St	2040
Whitehouse John H res 408 Aberdeen St	2149
Wickett H H res 37 1st St	2944
Wight P res 490 12th St SE	3472
Wilkinson Ray res 148 2nd Ave SE	3755
Williams Esther Beauty Salon 831 2nd St	2071
Williams W A res 96 4th St SE	2458
Williams W H res 406 Dundee St	3911
Williamson James O res 317 1st St	2424
Willox Robert res 350 8th St	3327
Willson George res 445 9th St	3714
Wilson Miss E res 21 2nd St SW	3414
Wilson James res 813B 4th St	3114
Wilson Mrs Wm res 335 3rd St	2934
Windsor Agency The Insurance 740 2nd St	3182
Wintemute G A res 356 Belfast St	2624

Wo Lee & Co Greenhouses 1st St N	2205
Wood C G res 454 12th St	3174
Woolven Mrs F C res 825b 3rd St	2063
Woolworth F W Co Ltd 633 2nd St	2122
Worth R J res 320 12th St	2415
Wright B W res 16 1st St SE	2256
Wright Cliff res 33 4th St	2258
Wright J W res 869a 2nd St	3834
Wyatt J A res 605 5th Ave	3376
Wyatt J H res 1008 Yuill St SE	2615
WYATT DR J L Dentist 569 2nd St	2433
Dr J L Wyatt res 406 Prospect Drive	2471
Wylie W D res 522 8th St	3987

Y

Y W C A 409 1st St SE	3964
Yeo Percy res 355 Belfast St	3013
Young E V res 106 5th St	2331
Yuill Harry C res 442 1st St SE	2283
Yuill J H res Erin Lodge 473 1st St	2485
Yuill W C res 129 10th St NE	2494

Z

Zachary's Groceries & Confect 845 7th St SE	3143
Zehren Paul res 4 Montgomerie Apts	3566
Ziegler J A Red Head Service Stn 699 7th Ave	2919

Medicine Hat Rural Subscribers

To obtain connection with these Rural Subscribers, dial 91
 and ask Operator for number desired

Ajax Coal Co Ltd The	X210	May W ..	R308
Alberta Wheat Pool	R518	McKinlay A P	R513
Aman A C	R313	Medicine Hat Golf & Country Club	R410
Burton Eugene	R706	Mitchell James	R403
Burton Eugene South Ranch	R509	Municipal Airport	X204
Cavan Henry	R512	Palmer W	X211
Cavan R N	R510	Peter Arthur E	R309
Choice Dairy The	X208	Provincial Government	
Hansen H K Fox Farm	X203	Dept of Lands & Mines Forest Service G R	
Heald E	R406	Ambrose Ranger	R312
Hedlund Dave	R505	Reade Frank	X214
Hillman W Black Eagle Ranch	R304	Roeder William Coal Mine	R322
Hillside Cemetery	X202	Seitz Jacob	R503
Hope Bruce	X608	Shock J J General Merchant	R310
Kennard Percy	R305	Smith E E	R307
Klaiber A	R502	Starks Mrs R E	R506
Koenig Dan	R115	Weir J W S	R507
Kunderd Henry	R303	Woolfrey W A	X209
Kurpjuweit R H	R516	Woolley Lloyd	R108
Maple Leaf Milling Co Ltd	R511	Woolley Norman	R112