



TELEPHONE DIRECTORY

MEDICINE HAT

& DISTRICT

Alberta Government Telephones
January 1942

2942
OFFICE

THE **T. EATON C^o**
WESTERN LIMITED
BRANCH STORE

2943
HARDWARE

2941 TOILETRIES, HOSIERY, NOTIONS, CANDY, MEN'S WEAR, SHOES 2941
2942 OFFICE, LADIES' WEAR, BLANKETS, DRESS GOODS 2942
2949 FURNITURE, RADIOS, REFRIGERATORS, HOUSE FURNISHINGS 2949

BLAIR'S

24 HOUR SERVICE

Phone

2727

TAXI

Phone

2727

GET THE HABIT AND TAXI-CAB-IT

DISTRIBUTORS FOR:
DODGE AND DE SOTO
CARS AND TRUCKS

FULL LINE OF CHRYSLER PARTS

SERVICING EVERY MAKE OF AUTOMOBILE

FIRESTONE TIRES — WILLARD BATTERIES

PHONE
2379

Medicine Hat Garage 524-526 2nd St.

PHONE **TOP HAT** PHONE
3456 - TAXI - 3456

DAY AND NIGHT SERVICE

Office: NAT BOTTER'S STORE

PASSENGERS FULLY INSURED

Established 1914

SCARLETT

DAY — NIGHT

PHONE

3-3-3-3

TAXI

SCARLETT

DAY — NIGHT

PHONE

3-3-3-3



RICHARDSON'S BAKERY
QUALITY BREADS

HAVE YOU TRIED OUR NEW
VIENNA OVEN LOAF?

Uniformed Salesmen

PHONE

3 2 3 3

AND HAVE ONE OF OUR SALESMEN CALL

J. J. Moore & Son
:: **FURNITURE** ::

Beds and Bedding -- Linoleum -- Draperies
-- China

"WHERE YOUR \$ GOES THE FARTHEST"

Phone **2787**

532 SECOND STREET

ALBERTA GOVERNMENT TELEPHONES

TELEPHONE DIRECTORY

OF

MEDICINE HAT

and DISTRICT

JANUARY, 1942

HEAD OFFICE : C.P.R. Building, Edmonton

HON. W. A. FALLOW

Minister of Railways and Telephones

J. D. BAKER

General Manager

A. M. MITCHELL

Comptroller

W. C. BRUCE

General Plant Superintendent

W. B. FERGUSON

General Traffic Superintendent

EMERGENCY CALLS

FIRE
3535

POLICE
2380

GAS
2665
NIGHT 2087

LIGHT
2726
NIGHT 3494

Telephone Service Calls

INFORMATION
92

LONG DISTANCE
0

TROUBLE
93

RURAL
91

Copyright, Canada, by Alberta Government Telephones

This directory is fully protected under the Copyright Laws of Canada and the publication of local telephone directories based upon information contained herein will be regarded as infringement of our copyright and the publishers thereof subject to action by us to protect that copyright. Subscribers and others should carefully consider the foregoing if solicited for advertising in local directories.

Alberta Government Telephones

Head Office: C.P.R. Building, Edmonton

Medicine Hat Office: 5th Street S. E.

HOW TO TRANSACT BUSINESS

With the Department of Telephones

APPLICATIONS FOR NEW SERVICE—CHANGES IN LOCATION— TERMINATION OF SERVICE

All matters relating to new telephone service, removals, termination of service, directory listings, adjustment of accounts, collection of bills, etc., are handled at the Business Offices of the Department.

CHANGES IN DIRECTORY LISTINGS

This telephone directory is issued regularly twice a year. Notification as to new listings, changes or corrections should be made to the Local Office at once.

DIRECTORY ADVERTISING

For information as to space or rates for Directory advertising, please communicate with Local Business Office.

SERVICE DIFFICULTIES

Below are shown the telephone numbers or persons to be called to report service difficulties. If at any time difficulties are not promptly corrected call the Manager of your Central Office:

INFORMATION—

For Information regarding New Subscribers and Changes of Telephone Numbers Call "Information" Dial 92

TROUBLE —

To Report Telephone Out of Order or unsatisfactory Local Service Call "Trouble" Dial 93

To Report Unsatisfactory Long Distance Service Call "Chief Operator" Dial 3417

LONG DISTANCE—

To Call Long Distance Operator Dial 0

TERMS AND CONDITIONS

UNDER WHICH TELEPHONE SERVICE IS FURNISHED

USE OF TELEPHONE

1. The service furnished is for the exclusive use of the subscriber and members of the subscriber's household or the subscriber's employees upon the subscriber's business, and the subscriber shall not extend the use of the telephone to any other person, nor shall the subscriber transmit messages for any other person; and if a residence telephone is used for business or professional purposes the Department may charge therefor the rate charged for business or professional telephones. The residence telephone number of a subscriber may be advertised only in conjunction with the advertising of his business telephone number.

The Department will endeavor to keep the lines and instruments in good working order and undertakes to clear trouble or make repairs with all reasonable despatch, but does not guarantee uninterrupted service.

The right of the subscriber is to use the instruments and connecting lines where the Department may place them, but not elsewhere, under such rules as the Department may from time to time prescribe.

The use of obscene, profane or abusive language while using the telephone is strictly forbidden and service may be immediately discontinued for violation of this rule.

2. The instruments and all accessories connected therewith shall remain the property of the Department and the subscriber shall not remove, alter, or make any attachment thereto; and the subscriber agrees to compensate the Department on demand for any damage, loss or destruction of the Department's instruments and accessories whilst such instruments and accessories are in or upon the premises of the subscriber.

CONSTRUCTION

3. When it is necessary to erect poles or anchors in order to carry the wires from the main telephone line on the road allowance or street to the applicant's premises, such poles and anchors in connection therewith will be supplied and erected by the Department at the expense of the applicant.

CHARGES — HOW PAID

4. All charges for installations, moves, and monthly rentals shall be paid in advance, which shall entitle the subscriber to service with all subscribers connected to the same exchange. Regular toll rates will be charged for all service to points outside of the exchange.

5. Subscribers shall pay the installation charges, first rental instalment (and construction charges, if any) strictly in advance. Excess mileage charge will be added if outside of exchange limits. If subsequent rental accounts remain unpaid after the 15th of the month, service shall be discontinued and no rebate or reduction shall be allowed for such interruption to service.

6. Subscribers shall pay monthly, at schedule rates, for all messages and conversations over the Long Distance lines. If said accounts remain unpaid after the 15th of the month, further credit shall be refused until account is paid.

7. Subscribers shall pay promptly, upon presentation of account, all charges for other miscellaneous items. If these charges are not paid within 15 days, service shall be discontinued.

COMPLAINTS RE LONG DISTANCE SERVICE

8. While the Department will carefully consider complaints in connection with toll service at any time received, it would be appreciated if subscribers would make such complaints immediately after conversation has taken place.

VACATION ALLOWANCE

9. Should a subscriber desire to have his Exchange Residence Service temporarily discontinued, owing to the closing of his residence, he may do so without cancelling contract or having telephone removed, and, if arranged for in advance in writing, an allowance of two-thirds of the rate per month will be made for a period of not less than one month and not exceeding three months in any one year. Subscriber shall state, when making application, the period for which he expects to be absent and shall pay for this period in advance. Subscriber will notify the Department when he wishes service resumed, either in writing or by calling at the office and signing re-connect order. Owing to the fact that Multi-Party Line Telephones cannot be disconnected without a special trip being made to their location, this regulation will not apply to Multi-Party Line Service.

MOVES

10. The telephone is first located where the subscriber directs and must not be moved or interfered with. When the subscriber desires to have the telephone moved to any other location, notice in writing should be given to the local office, at least ten days before the change is desired. The work will then be done as promptly as possible at regular charges.

JOINT USER SERVICE

11. A joint user is a person, firm or corporation who shares the subscriber's exchange service in accordance with tariff provisions. To facilitate this use of service, a directory listing is included.

Business joint user — one-third of business wall-set rate.

Residence joint user—50c per month.

CANCELLATION OF SERVICE

12. Subscribers giving up service must notify the Department in writing, or call at office and sign "Take Out" order. Failing to do this, subscriber will be liable for all charges up to date instrument is removed or taken over by a new subscriber.

DIRECTORIES

13. The Department of Telephones assumes no liability on account of errors in or omissions from its directories. Telephone directories are and remain the property of Alberta Government Telephones. They are printed for the exclusive use of the Department's patrons and are loaned to its subscribers. All persons are cautioned against reproducing their contents, which are fully protected by copyright. Subscribers must not use any binder, holder or other attachments, except as provided by the Department.

TELEPHONE NUMBERS

14. A subscriber's telephone number is not a part of the application for service, but numbers will only be changed when absolutely necessary or for the betterment of the service.

HOW TO USE THE TELEPHONE

AUTOMATIC TELEPHONE

Consult the Telephone Directory for the correct number before you make a call. Do not trust to your memory.

Call "92" for information if the person or firm you wish to call is not listed in the Directory.

1. **Remove the Receiver.**—Be careful not to move the hook at any time during the call.

2. **What to Dial.**—It is necessary to dial each figure of the number in rotation.

3. **How to Dial.**—Suppose you are calling 2301. To dial this number proceed as follows:—

(1) Remove receiver.
(2) Place your finger in the hole over the figure "2."

(3) Turn the dial around until your finger strikes the finger stop, then lift your finger and allow the dial to return to rest without touching it.

(4) Repeat this operation for the figures 3-0-1. If you find that you have made an error before you have completed dialing, hang up the receiver for a few seconds, then remove the receiver, and dial your call again.

4. **Ringling and Busy Signals.**—After you have finished dialing you should hear in the receiver either the ringing signal (an intermittent burr-ringing sound) indicating that the called telephone is being rung, or the busy signal—a rapid buzz-buzz-buzz—indicating that the called line is busy.

If you hear the ringing signal and receive no answer within a reasonable period, hang up the receiver and call later.

If you hear the busy signal hang up the receiver and after waiting a reasonable length of time call again.

If you hear neither signal within half a minute, hang up the receiver for a few seconds, then remove it and dial again—If the same condition is found after several attempts, dial "93" and report the condition to "Trouble" operator.

5. **After You Have Finished Talking.**—Hang up your receiver—This will disconnect you from the called telephone. Leave your receiver on the hook a few seconds before starting to make another call.

AUTOMATIC EXCHANGES

Information:—Call Information "92" for numbers of New Subscribers, Changes, Long Distance Line Charges, New Toll Offices, etc.

Trouble:—Complaints regarding Telephone Troubles should be reported to Trouble Operator, Telephone No. 93. When reporting trouble give telephone number affected and its location, also state as accurately as possible just how trouble manifests itself. Try to be specific, as incomplete information frequently causes delay in locating nature of trouble.

If a line you are trying to call repeatedly tests "busy," notify Trouble Operator, who will investigate whether same is caused by an abnormal condition on line, or from use. If any line appears too busy for good Service, write to the District Commercial Superintendent. Subscribers are requested not to engage Trouble or Information Operators in conversation longer than necessary, as by so doing the operator will be prevented from giving prompt attention to other patrons.

MANUAL TELEPHONE

Consult the Telephone Directory for the correct number before you make a call. Do not trust to your memory.

Ask for "Information" if the person or firm you wish to call is not listed in the Directory.

1. **To Call the Operator** give one long ring before removing the receiver from the hook and then hold receiver to the ear.

2. **When the Operator Replies** by saying, "Number?" give the number of the subscriber's telephone desired, slowly and distinctly.

Example:—"1429" should be pronounced "one four - two nine."

"175" should be pronounced, "One - seven five."

3. **Face the Transmitter** with the lips almost touching the mouthpiece. Speak naturally, distinctly and not too rapidly.

4. **Keep the Receiver to the Ear,** and the Operator, after repeating the number, will connect you with the subscriber called for. If the desired line is found to be in use the operator will report "Line Busy."

5. **When You Have Finished Talking** place the receiver on the hook, small end up, and give a short ring. This gives the operator a signal to disconnect and you are then in a position to call another number or to be called.

NOTE:—At Camrose, Lacombe, Lloydminster, Hanna and Wetaskiwin (Common Battery Exchange) no ringing, except by rural line subscribers, is necessary. Simply remove receiver from hook and in all other respects proceed as instructed above, placing the receiver on the hook when conversation is finished.

6. **Do Not Use the Telephone** during a thunderstorm.

7. **Rural Line Subscribers** should limit their conversation to Five Minutes duration and must not "listen in" to conversation not intended for them, as it interferes with the Service.

Complaints:—Complaints regarding telephone trouble and unsatisfactory Service should be made to the Local Manager, Agent or Chief Operator at the Office concerned, and if not rectified within a reasonable time, the matter should be referred to the General Traffic Superintendent at Edmonton.

LONG DISTANCE SERVICE

Rules and Regulations

To make a Long Distance Call, first call "Long Distance"—when the Long Distance Operator answers, give her your telephone number, followed by the details of your call as indicated below.

CLASSIFICATION OF LONG DISTANCE SERVICE

1. STATION-TO-STATION CALLS

The Station-to-Station rate applies when it is not desired to establish communication between particular persons.

Station-to-Station calls must be made by number whenever Telephone Directory information covering the called point is available. When such information is not available, the name or address under which the telephone is listed should be given, specifying that "anyone at that number will do."

EXAMPLE:—"4567, J. H. Brown speaking, I want to speak to Springdale, 684," or "I want to speak to Springdale, anyone at Mr. John Jones' residence (or business) telephone."

2. PERSON-TO-PERSON CALLS

(Except for points in Manitoba, British Columbia, Eastern Canada and the United States, evening and night rates do not apply to Person-to-Person Service.)

When a Long Distance Call is made, specifying that conversation is desired with a particular person and the connection is established and conversation held with that person, the "Person-to-Person" rate applies.

EXAMPLE:—"4567, J. H. Brown speaking, I want to speak to Springdale, 684, Mr. John Jones," or "If Mr. Jones is not there, I will speak to Mr. A. F. Smith."

NOTE:—*When a particular person is desired, the Long Distance operator must be so advised when the call is placed, otherwise charges will be made from the time connection is established with the telephone desired, whether the party is obtained or not.*

Appointment Calls

An appointment Call is a Person-to-Person call requiring communication to be established at a specified time, and order should be given to the Long Distance operator in the usual manner.

Messenger Calls

A Messenger Call is a Person-to-Person call, necessitating the services of a Messenger to secure the attendance of a specified person, and order should be given to the Long Distance operator in the usual manner. The Messenger Service and Report charges in such cases must be prepaid by the calling party if the call is placed from a Public Pay Station.

Collect Calls.

Collect calls are Person-to-Person or Station-to-Station Calls, the charges for which are reversed, *i. e.*, to be collected from the called party. In such cases the assent of the called party shall be obtained before the connection is established.

LONG DISTANCE SERVICE

Rules and Regulations—Continued

RATES AND CHARGES FOR LONG DISTANCE SERVICE

Long Distance Tolls will be charged to the subscriber from whose instrument the Long Distance call is placed, except those messages for which the receiving party expressly agrees to pay.

All rates quoted are for an initial period of three minutes. For overtime beyond the initial period a proportionate charge is made per minute.

The rates quoted on pages 7 and 8 are Station-to-Station Day Rates.

The Day Rate for a Station-to-Station call is the fundamental rate upon which the rates for other classes of Service are based.

The rate for a completed Person-to-Person, Appointment or Messenger Call, including Written Messages and Telegrams, either Paid or Collect is approximately 25% higher than the corresponding Station-to-Station Day Rate.

Day rates only are used in computing charges on Person-to-Person, Appointment and Messenger Calls, including Written Messages and Telegrams.

Evening and Night Rates

Alberta and Saskatchewan — Reduced rates on Station-to-Station (anyone) calls are in effect from 7 p.m. to 12 Midnight, with a further reduction from Midnight to 4:30 a.m.

British Columbia, Manitoba, Eastern Canada and U.S.A. — Reduced rates are in effect from 7 p.m. to 4:30 a.m., including all day Sundays.

(NOTE:—In no case shall the Evening or Night rate, as the case may be, be less than 25c. for the initial period, unless the Day rate is less, in which case the Day, Evening and Night Rates shall be the same.)

Report Charges

Under certain conditions a Report Charge of approximately one-quarter of the Station-to-Station Day rate will be made on uncompleted Person-to-Person, Appointment and Messenger Calls, including Written Messages and Telegrams, to points in Alberta and Saskatchewan.

A Report Charge shall not be made on a Station-to-Station call except when such call is placed "Collect" and the charges have not been accepted.

PAY STATION SERVICE

Pay Station Telephones have been installed by the Department for the convenience of subscribers and the general public, in suitable locations throughout the Province. Local conversations may be had from these telephones at a charge of 5 cents for 5 minutes. Long Distance Service is furnished at regular tariff rates upon deposit of the amount of the initial charge (covering three minutes conversation) the usual charges being made for excess time.

Non-subscribers who desire to use Subscribers' telephones should be referred to the nearest Public Pay Station.

If there is anything about our rates and practices you do not fully understand, please call our Local Manager or Chief Operator and they will be glad to explain.

LONG DISTANCE RATES

From Medicine Hat

To Places connected with the Long Distance Lines of the Alberta Government
Telephones and Connecting Systems in Alberta.

NOTE:—These Rates are Subject to Change without Notice.

TO	Station-to-Station Day Rate 3 Mins.	TO	Station-to-Station Day Rate 3 Mins.	TO	Station-to-Station Day Rate 3 Mins.	TO	Station-to-Station Day Rate 3 Mins.
	\$ c		\$ c		\$ c		\$ c
Abee	1.95	Carrot Creek	2.10	Etzikom	.30	Lac La Biche	2.10
Acme	1.00	Carstairs	1.15	Evansburg	1.95	Lacombe	1.35
Airdrie	1.05	Carvel	1.80	Everts	1.35	Lac Ste Anne	1.80
Alberta Beach	1.80	Castor	1.00	Exshaw	1.35	Lafond	1.65
Alberta Box	1.65	Cavendish	.35			Lamont	1.65
Alcomdale	1.80	Cereal	.60	Fallis	1.80	Langdon	.90
Alderson	.25	Cessford	.50	Fawcett	2.10	Lavoy	1.50
Alexo	1.80	Champion	.70	Ferintosh	1.35	Leduc	1.65
Alhambra	1.50	Chauvin	1.15	Flatbush	2.25	Legal	1.80
Alix	1.20	Cherhill	1.95	Flat Lake	1.80	Legend	.40
Alliance	1.05	Chinook	.60	Foisy	1.65	Leo	1.00
Alsask, Sask.	.60	Chip Lake	1.95	Foothills	2.10	Leslieville	1.50
Altario	.85	Chipman	1.65	Foremost	.35	Lethbridge	.65
Amber Valley	2.10	Chisholm	2.25	Forestburg	1.15	Linaria	2.10
Andrew	1.65	Claresholm	.80	Fort Assiniboine	2.10	Lindbergh	1.65
Antross	1.65	Clive	1.35	Fort Kent	1.80	Lisburn	1.95
Ardmore	1.80	Clyde	1.95	Fort Saskatchewan	1.65	Little Gem	.75
Armada	1.80	Coalspur	2.10	Fortspur	1.65	Lloydminster	1.35
Arrowwood	.75	Coal Valley	2.10	Freedom	1.95	Lomond	.60
Ashmont	1.80	Cochrane	1.15			Longview	1.00
Ashwell	2.10	Cold Lake	1.95	Gadsby	1.05	Looma	1.65
Athabasca	2.10	Compeer	.80	Gainford	1.95	Lougheed	1.20
Atlee	.40	Condor	1.50	Galahad	1.10	Lunnford	1.95
Atmore	2.10	Conrad	.45	Gleichen	.75	Luscar	2.25
		Consort	.85	Glendon	1.80		
Banff	1.50	Cooking Lake (North)	1.65	Glenevis	1.95	MacKay	2.10
Barons	.70	Cooking Lake (South)	1.65	Glenwood	.85	Macleod	.80
Barrhead	1.95	Coronado	1.80	Gorman	2.10	Magnolia	1.95
Bashaw	1.35	Coronation	.90	Grand Centre	1.80	Magrath	.70
Bassano	.60	Coutts	.60	Granum	.80	Mallaig	1.80
Battle Lake	1.65	Cowley	.95	Grassland	2.10	Ma-Me-O Beach	1.50
Bawlf	1.35	Craigmyle	.85	Grassy Lake	.35	Manly Highway	1.80
Beacon Hill	1.80	Cremona	1.20	Green Court	2.10	Manola	1.95
Beauvallon	1.65	Crossfield	1.10	Gull Lake	1.35	Manville	1.50
Beaver Crossing	1.80	Czar	1.05	Gunn	1.80	Manyberries	.30
Bellis	1.80			Halkirk	1.05	Markerville	1.35
Benalto	1.35	Dakin	2.10	Hanna	.80	Mayerthorpe	2.10
Bentley	1.35	Dapp	2.10	Hardisty	1.15	McLaughlin	1.35
Big Fish Lake	1.65	Davis	2.10	Hay Lakes	1.50	Meadowview	1.95
Big Valley	1.05	Daysland	1.35	Heaton Moor	1.95	Meanook	2.10
Blindloss	.40	Deep Creek	2.25	Heinsburg	1.65	Meeting Creek	1.35
Blackie	.85	Delburne	1.15	Heisler	1.20	Mellowdale	2.10
Blairmore	1.05	Delia	.85	Hemaruka	.75	Mercoal	2.10
Bloomsbury	2.10	Derwent	1.50	Hespero	1.50	Metiskow	1.00
Blue Ridge	2.10	Deville	1.65	Highridge	1.95	Michichi	.85
Bon Accord	1.80	Didsbury	1.15	High River	.90	Milk River	.55
Bonnyville	1.80	Donalda	1.20	Hilda	.30	Millet	1.50
Bordenave	1.80	Donatville	2.10	Hilliard	1.65	Millcent	.45
Bow Island	.25	Doucette	1.65	Holden	1.50	Milo	.65
Bowden	1.20	Drumheller	.85	Holmes Crossing	2.10	Minburn	1.50
Bowell	.10	Duchess	.45	Hughenden	1.05	Mirror	1.20
Bowmanton	.15	Duclos	1.80	Hussar	.70	Mission	2.10
Boyle	2.10	Durlingville	1.80	Hylo	2.10	Morecambe	1.65
Boyne Lake	1.80	Duvernay	1.65			Morinville	1.80
Bragg Creek	1.15			Iddesleigh	.35	Morrin	.90
Brant	.80	Eastbourne	1.80	Innisfail	1.20	Mountain Park	2.10
Breton	1.65	Eastburg	1.95	Innisfree	1.50	Mulhurst	1.65
Brooks	.45	East Coulee	.75	Irma	1.20	Mundare	1.65
Brosseau	1.65	Echohill	1.95	Iron Springs	.55	Munson	.85
Bruce	1.35	Eckville	1.50	Irvine	.15	Musidora	1.65
Buffalo	.35	Edberg	1.35	Islay	1.50	Myrnam	1.50
Bulwark	1.00	Edgerton	1.15				
Burdett	.30	Edmonton	1.65	Jarrow	1.35	Naco	.70
Busby	1.95	Edmonton Beach	1.80	Jarvie	2.10	Nanton	.85
Byemoor	.95	Edson	2.10	*Jasper	2.85	Neerlandia	2.10
		Egward	1.80	Jenner	.35	Nemiscam	.30
Cadomin	2.25	Egremont	1.80	Judson	.55	Nestow	1.95
Calahoo	1.80	Elk Point	1.65			New Brigden	.70
Calgary	1.00	Ellscoff	1.95	Kapasiwin	1.80	Newbrook	1.95
Calmar	1.65	Elnor	1.10	Kaydee	2.25	New Dayton	.55
Cambria	.80	Empress	.45	Killam	1.20	New Sarepta	1.50
Camp Creek	2.10	Endiang	.95	Kinsella	1.35	Niton	2.10
Canmore	1.35	Entwistle	1.95	Kiriemuir	.80		
Canmore	1.35	Erith	2.10	Kitscoty	1.50		
Carbon	.90	Erixon	1.35	Knob Hill	1.65		
Cardston	.85	Esther	.70				
Carngangay	.70	Etter McDougall	1.65				
Carolside	.60						

* For other classes of rates to Jasper call the Chief Operator.

TO	Station-to-Station Day Rate 3 Mins. \$ c	TO	Station-to-Station Day Rate 3 Mins. \$ c	TO	Station-to-Station Day Rate 3 Mins. \$ c	TO	Station-to-Station Day Rate 3 Mins. \$ c
Nobleford	.65	Ray	1.80	Shandro	1.80	Vale	.15
Noral	1.95	Raymond	.60	Sheerness	.70	Vegreville	1.50
Norbuck	1.65	Redcliff	.10	Shoal Creek	2.10	Venice	2.10
Nordegg	1.80	Red Deer	1.35	Sibbald	.60	Vermillion	1.50
North Cooking Lake	1.65	Redwater	1.80	Silver Bay	1.65	Veteran	.85
Northville	1.95	Retlaw	.45	Sion	1.95	Viking	1.35
		Richards	2.10	Skiff	.40	Vilna	1.80
		Richdale	.75	Smoky Lake	1.80	Vimy	1.95
Okotoks	.95	Rife	1.80	South Cooking Lake	1.65	Vulcan	.75
Olds	1.20	Rimbey	1.50	Spedden	1.80		
Onoway	1.80	Rochester	1.95	Standard	.80	Wabamun	1.80
Opal	1.80	Rochford	2.10	Stanger	1.95	Wainwright	1.20
Orion	.30	Rockyford	.85	Stanmore	.70	Wake-Shyre Lodge	1.15
Olwseye	1.80	Rocky Mtn. House	1.50	Stavely	.85	Walsh	.20
Oyen	.60	Rosebud	.85	Sterco	2.10	Wardlow	.45
		Rose Lynn	.65	Stettler	1.15	Warner	.55
		Rosevear	2.10	Stevenville	.45	Warspite	1.80
Pashley	.10	Ross	1.65	Stony Plain	1.80	Waskatenau	1.80
Patricia	.40	Rossington	1.95	Strathmore	.85	Waterton Park	1.00
Paulus	1.65	Rowley	.95	Strome	1.20	Wayne	.80
Paxson	2.10	Royalities	1.00	Suffield	.20	Westerose	1.50
Peers	2.10	Rumsey	1.00	Sunnynook	.60	Westlock	1.95
Pembridge	1.95	Rush Lake	.15	Sweet Grass, Mont.	.60	Wetaskiwin	1.50
Pemukan	.85	Ryley	1.50	Sylvan Lake	1.35	White Court	2.25
Pendryl	1.65					Whitla	.15
Penhold	1.20	St. Albert	1.80	Taber	.45	Wildwood	1.95
Perryvale	2.10	St. Lina	1.80	Tawatinaw	1.95	Willingdon	1.65
Pickardville	1.95	St. Paul	1.65	Therien	1.80	Willow Creek	.80
Picture Butte	.60	St. Vincent	1.80	Thorhild	1.95	Winfield	1.65
Pincher Creek	.95	Saddle Lake	1.65	Thorsby	1.65	Winnifred	.20
Plains	2.10	Sangudo	1.95	Three Hills	1.00	Wolf Creek	2.10
Plamondon	2.10	Saunders	1.65	Tilley	.35		
Pollockville	.55	Schullard	1.00	Tipperary	2.10		
Ponoka	1.35	Scotfield	.70	Tofield	1.50		
Princess	.40	Seba	1.80	Trochu	1.05		
Provost	1.00	Sedalia	.70	Turner Valley	1.05	Yeoford	1.65
		Sedgewick	1.20	Two Hills	1.65	Youngstown	.65

In addition to the points on pages 7 and 8 Long Distance Connection may be had also with the following places in Alberta, rates for which can be obtained by calling "Long Distance":—

ALBERTA POINTS

Acadia Valley	Beiseker	Burmis	Dahmer	Elk Island
Acheson	Bellevue	Burnt Lake	Dalemead	Elk Island Park
Adkins	Belvedere	Cadogan	Dalroy	Elkton
Aerial	Bennett	Calling Lake	Darwell	Elkwater Lake
Astna	Benton	Calverly	Davisburg	Ellerslie
Agricola	Berrymoor	Campbell Lake	Delacour	Enchant
Albion Ridge	Beverly	Campsie	Del Bonita	Ensign
Aldersyde	Beynon	Cappon	Demay	Entice
Alice Lake	Bircham	Cardiff	Desjarlais	Equity
Allerston	Birdsholm	Carlton Hill	Dewberry	Erskine
Allingham	Bismark	Caroline	De Winton	Everett
Amisk	Bittern Lake	Carseland	Diamond City	Ewelme
Angle Lake	Black Diamond	Cassils	Dickson	Excel
Angus Ridge	Blackfalds	Cayley	Dina	Eyremore
Ankerston	Blackfoot	Chailey	Dinant	
Anzac	Blondheim	Chancellor	Dinton	Fabyan
Ardenode	Bluffton	Cheadle	Dobson	Fairacres
Ardenville	Bodo	Chesterwold	Dodds	Fairbank
Ardley	Boian	Chigwell	Dog Pound	Fairfield
Ardrossan	Bonlea	Chin	Doondale	Fairydell
Armena	Bonnar	Clandonald	Dorenlee	Faith
Arneson	Borradaile	Clarinda	Doris	Falun
Asker	Botha	Clearview	Dorothy	Farming Valley
Avalon	Bottrel	Clover Bar	Dowling	Farrow
Azure	Bouyant	Cluny	Downing	Federal
	Bow City	Clymont	Drayton Valley	Fedorah
Baintree	Bradshaw	Coaldale	Duagh	Fenn
Balmoral	Bremner	Coalhurst	Duffield	Ferrybank
Balzac	Bretona	Coleman	Duhamel	Fishburn
Bardo	Brightview	Colinton	Dunmore	Fleet
Barnwell	Britain	Commerce	Dunshalt	Florann
Bathgate	Brocket	Comrey	Dunstable	Foreman
Battle	Brooksley	Conjuring Creek		Forest Lawn
Battle Bend	Brownfield	Connaught	Eagle Hill	Forshee
Battleview	Brownlow's L'ndg	Copeville	Earlie	Four Nine
Beaumont	Broxburn	Cornucopia	Earling	Frank
Beaver Heights	Bruderheim	Countess	Earlville	Frankburg
Beaver Hills	Buffalo Head Ranch	Cousins	Easterville	Freeman River
Beaver Lake	Buffalo View	Crowfoot	Eden Valley	
Beaver Mines	Burford	Cummings	Edison	Gahern
Beazer		Custer	Edwell	Garden Plain
Beddington				Garred

ALBERTA POINTS—Continued

Gartley	Kahwin	Milnerton	Raley	Strand
Gem	Kaleland	Monarch	Ranfurly	Strangmuir
Ghost Pine	Kathryn	Monitor	Raven	Streamstown
Gibbons	Kavanagh	Morgan	Redland	Sugar Bowl
Gilby	Kelsey	Morley	Red Lodge	Sullivan Lake
Gillen	Keoma	Morningside	Red Raven	Sulphur Springs
Gilpin	Kessler	Mosside	Red Willow	Summerview
Gladys	Kevisville	Mossleigh	Reid Hill	Sundre
Glenbow	Kew	Mound	Reist	Sunnydale
Glenford	Kilbourn	Mountain View	Rexboro	Sunnyslope
Golden Spike	Kimball	Murray Valley	Ribstone	Swalwell
Good Hope	Kingman		Rio Alto	
Good Luck	Kippenville		Rivercourse	Talbot
Gopher Head	Kirkcaldy	Nacmine	Riviere Qui Barre	Taylorville
Granger	Knee Hill Valley	Namaka	Rockeling Bay	Tees
Graminia		Namao	Rocky Rapids	Telfordville
Grand Valley	Laconia	Neighborhoodview	Rodino	Tempest
Green Glade	Lake Demay	Nevis	Rolling Green	Thelma
Greenshields	Lake Isle	Newcastle	Rolling Hills	Throne
Griesbach	Lake Minnewanka	New Lindsay	Rosalind	Tindastoll
Grosmont	Lake View	New Norway	Rosedale	Tolland
Groton	Lamoureux	New Oxley	Roselea	Tomahawk
Gwynne	Landonville	Nightingale	Rosemary	Tongue Creek
Hackett	Lanfine	Nilrem	Rosenheim	Torrington
Haight	Lavesta	Nisbet	Rosenroll	Travers
Hairy Hill	Lea Park	Nisku	Ross Creek	Tudor
Hamlin	Leavitt	Norfolk Siding	Rosyth	Turin
Handhills	Leedale	Northbank	Round Hill	Twin Butte
Hardieville	Leeshore	Northern Valley	Rusylvia	Twin Lakes
Harmattan	Lewisville	Northleigh		Twining
Hart Siding	Liberty	Norton	St. Kilda	
Hartell	Lindbrook	Ogden	St. Michael	Ulster
Hastings Coulee	Lineham	Ohaton	Saltaux	
Haven	Livingston	Olin Creek	Sammons	Vauxhall
Haynes	Lochend	Olson Coulee	Sarcee	Victoria
Hayter	Lockhart	O'Mara	Sather	Viewpoint
Hazeldine	Long Coulee	Orkney	Scandia	Villeneuve
Heath	Lousana	Orton	Scapa	Volmer
Heath Creek	Lowe	Quelletteville	Scotstoun	
Heather Brae	Loyalist	Oxville	Seaforth	Wahstao
Heatherdown	Lucky Strike		Seebe	Waltross
Helmsdale	Lundbreck	Pakan	Sexton Creek	Wanda
Herronton	Lyalta	Paradise Valley	Sharples	Warden
Hesketh		Parkland	Shaughnessy	Warwick
Hetherington	Madden	Park View	Sheep Creek	Waterglen
Highfield	Majorville	Partridge Hill	Shepard	Water Valley
Highland View	Makepeace	Passburg	Shonts	Watts
Hillcrest	Malmo	Peacock	Shouldice	Wealthy
Hill End	Manfred	Pearce	Sidcup	Welling
Hillspring	Maple Leaf	Pearson	Silver Heights	Wellsdale
Hoadley	Martins	Peat	Silver Lake	Westcott
Hobbema	Marwayne	Pekisko	Simons Valley	Westward Ho
Homeglen	Masinasin	Pendant d'Oreille	Skaro	Whisky Gap
Horsehaven	Maughan	Perbeck	Soda Lake	Whitewood Lake
Horseshoe Lake	Maunsell	Phillips	Southesk	Whitford
Hubalta	Maybutt	Pibroch	Sponden	Wildmere
Hunterville	Mayton	Pincher Station	Springbank	Willowdale
Hutton	Mazeppa	Pine Lake	Spring Coulee	Willowlea
Huxley	McDonaldville	Pirmez Creek	Springdale	Wilson Siding
	Meadowbank	Pleasant View	Spring Lake	Wilton Park
Indus	Meadow Creek	Poe	Spring Point	Wimborne
Inga	Mearns	Poplar Ridge	Springvale	Winterburn
Ingleton	Menaik	Poplar Site	Spruce Grove	Woodhouse
Inverlake	Merna	Pretty Hill	Stampede	Wood River
Iola	Mewassin	Priddis	Stand Off	Woolford
Irwinville	Midland	Princeton	Staplehurst	Wostok
	Midnapore	Puffer	Star	Wrentham
Jeffrey	Millarville	Purple Springs	Sterlingville	
Joffre	Miller		Stirling	Yarfield
Josephburg		Quarrel	Stobart	Yorkville
Jumping Pound		Queenstown	Stockland	

USE LONG DISTANCE
 and
Advertise in the Telephone
Directory

See Pages 7 to 10 for Long Distance Rates.

Rates to Certain Points in Canada and the United States of America

Rates to points not listed below may be obtained by calling Long Distance

FROM MEDICINE HAT

TO	STATION-TO-STATION				PERSON-TO-PERSON			
	DAY (Exc. SUN.)		NIGHT and SUNDAY		DAY (Exc. SUN.)		NIGHT and SUNDAY	
	3 Mins.	Add. Min.	3 Mins.	Add. Min.	3 Mins.	Add. Min.	3 Mins.	Add. Min.
AKRON, OHIO	\$3.50	\$1.15	\$2.50	\$0.80	\$4.50	\$1.15	\$3.50	\$0.80
BALTIMORE, MD.	3.75	1.25	2.75	.90	4.75	1.25	3.75	.90
BOISE, IDAHO	1.60	.50	1.05	.35	2.10	.50	1.55	.35
BOSTON, MASS.	4.00	1.30	3.00	1.00	5.00	1.30	4.00	1.00
BRANDON, MAN.	1.75	.55	1.05	.35	2.30	.55	1.55	.35
BROOKLYN, N.Y.	4.00	1.30	3.00	1.00	5.00	1.30	4.00	1.00
BUFFALO, N.Y.	3.50	1.15	2.50	.80	4.50	1.15	3.50	.80
BUTTE, MONT.	1.15	.35	.70	.20	1.55	.35	1.10	.20
CHICAGO, ILL.	2.90	.95	1.95	.65	3.85	.95	2.90	.65
CINCINNATI, OHIO	3.50	1.15	2.50	.80	4.50	1.15	3.50	.80
CLEVELAND, OHIO	3.50	1.15	2.50	.80	4.50	1.15	3.50	.80
DENVER, COLO.	2.10	.70	1.40	.45	2.80	.70	2.10	.45
DETROIT, MICH.	3.25	1.05	2.25	.75	4.25	1.05	3.25	.75
DULUTH, MINN.	2.30	.75	1.55	.50	3.05	.75	2.30	.50
GREAT FALLS, MONT.	.85	.25	.55	.15	1.20	.25	.90	.15
HALIFAX, N.S.	5.75	1.90	3.50	1.15	7.75	1.90	5.25	1.15
HELENA, MONT.	1.00	.30	.60	.20	1.35	.30	.95	.20
KANSAS CITY, MO.	2.70	.90	1.80	.60	3.60	.90	2.70	.60
LOS ANGELES, CAL.	2.80	.90	1.85	.60	3.75	.90	2.80	.60
MILWAUKEE, WIS.	2.80	.90	1.85	.60	3.75	.90	2.80	.60
MINNEAPOLIS, MINN.	2.30	.75	1.55	.50	3.05	.75	2.30	.50
MONTREAL, QUE.	4.75	1.55	2.75	.90	6.50	1.55	4.00	.90
NEW YORK, N.Y.	4.00	1.30	3.00	1.00	5.00	1.30	4.00	1.00
OAKLAND, CAL.	2.50	.80	1.65	.55	3.35	.80	2.50	.55
OMAHA, NEB.	2.40	.80	1.60	.50	3.20	.80	2.40	.50
OTTAWA, ONT.	4.50	1.50	2.75	.90	6.00	1.50	4.00	.90
PHILADELPHIA, PA.	3.75	1.25	2.75	.90	4.75	1.25	3.75	.90
PITTSBURG, PA.	3.50	1.15	2.50	.80	4.50	1.15	3.50	.80
PORTLAND, ORE.	1.90	.60	1.25	.40	2.55	.60	1.90	.40
REGINA, SASK.	1.65	.55	2.05	.65
SAINT JOHN, N.B.	5.50	1.80	3.25	1.05	7.50	1.80	5.00	1.05
ST. PAUL, MINN.	2.30	.75	1.55	.50	3.05	.75	2.30	.50
SALT LAKE CITY, UTAH	1.90	.60	1.25	.40	2.55	.60	1.90	.40
SAN FRANCISCO, CAL.	2.50	.80	1.65	.55	3.35	.80	2.50	.55
SASKATOON, SASK.	1.50	.50	1.85	.60
SEATTLE, WASH.	1.75	.55	1.15	.35	2.35	.55	1.75	.35
SHELBY, MONT.	.70	.20	.40	.10	1.00	.20	.70	.10
SPOKANE, WASH.	1.30	.40	.80	.25	1.75	.40	1.25	.25
TACOMA, WASH.	1.75	.55	1.15	.35	2.35	.55	1.75	.35
TORONTO, ONT.	4.25	1.40	2.50	.80	5.75	1.40	3.75	.80
VANCOUVER, B.C.	3.00	1.00	1.50	.50	3.75	1.00	2.65	.50
VICTORIA, B.C.	3.50	1.00	1.75	.55	4.50	1.00	3.15	.55
WASHINGTON, D.C.	3.75	1.25	2.75	.90	4.75	1.25	3.75	.90
WINNIPEG, MAN.	2.10	.70	1.25	.40	2.80	.70	1.90	.40

Night rates apply from 7.00 p.m. to 4.30 a.m.

To secure Evening or Night Rates on station-to-station calls to points in Saskatchewan Call the Operator.

Person-to-person Night and Sunday rates do not apply on calls to points in Saskatchewan

MEDICINE HAT

EXCHANGE AND OFFICE, FIFTH STREET SOUTH-EAST

CONTINUOUS SERVICE

INFORMATION — For Information regarding New Subscribers and changes of Telephone Numbers.....	Call "Information" Dial	92
TROUBLE — To Report Telephone Out of Order or unsatisfactory Local Service	Call "Trouble" Dial	93
To Report unsatisfactory Long Distance Service Call "Chief Operator" Dial		3417
LONG DISTANCE — To Call Long Distance Operator	Dial	0
RURAL — For List of Rural Subscribers, see pages following list of Exchange Subscribers. TO CITY SUBSCRIBERS — For connection with Rural Subscribers Dial 91, and when Operator answers give the Number of Rural Subscriber desired, distinctly, as R 3-1-4.		
FIRE — In case of Fire	Dial	3535
POLICE — To call the Police	Dial	2380

LONG DISTANCE CALLS ARE CLASSIFIED

STATION-TO-STATION CALLS *When you will speak to anyone at the distant telephone.*

This type of call meets most needs and is at the lowest rate. It is the simple basic call, requiring only the connecting of two distant telephones.

PERSON-TO-PERSON CALLS *When a particular person is desired.*

Entailing, as it does, more labor and longer use of lines, this type of call takes a higher rate. In the event of the call not being completed a small charge is made for reports furnished.

These Special Services Are Also Available

Appointment Calls . are made when a particular person is required at a specified time. The operator makes the appointment with the distant party.

Collect Calls When called party is requested to pay for and accepts charges.

Messenger Calls . . . are made when the called party cannot be reached by telephone and a messenger is sent to bring the party to the telephone.

Appointment and Messenger Calls are on person-to-person basis.

GIVE THE OPERATOR THE DISTANT NUMBER IF YOU CAN — IT SPEEDS UP THE SERVICE



Your Florist!!

A Complete Floral Service

NOVELTIES
GIFT BOXES
CORSAGES
POTTED PLANTS
CUT FLOWERS

FLOWERS for FUNERALS
FLOWERS for WEDDINGS
CHURCH or HOME
ARTISTIC DECORATIONS
ARRANGED

WE HANDLE ALL DETAILS

ALL FLOWERS ARE BEAUTIFUL, BUT IT DOES
MAKE A DIFFERENCE HOW THEY ARE ARRANGED

Harward's House of Flowers

MILDRED HARPER

EDWARD WARD

WE DELIVER

PHONE — DAY

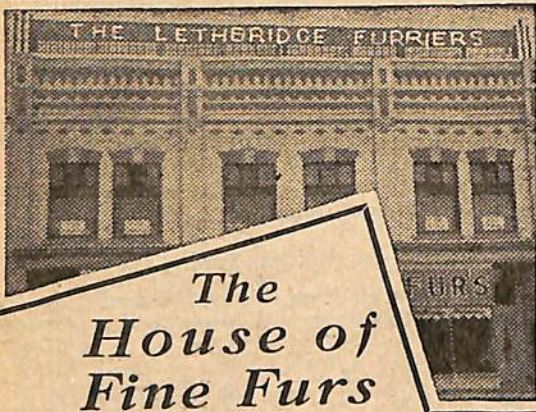
2233

531 - 3rd STREET

(West of Eaton's)

NIGHTS & HOLIDAYS

2130 - 3631



Visit our modern fur salon for superior selections. Courteous service. Leadership in fur designing. We know we can please you.

FUR STORAGE

● For greatest safety store your furs in our **MOTH PROOF**, General Electric Equipped cold storage vault, located on the premises. For particulars, write us.

Our Storage Vault is Equipped with the Latest in General Electric Refrigeration

LETHBRIDGE FURRIERS

MAJESTIC
THEATRE
BUILDING
5th Ave. South
LETHBRIDGE
ALTA.

RESTYLING



REMODELLING

RELINING



REPAIRING

CLEANING



GLAZING

MEDICINE HAT

EXCHANGE SUBSCRIBERS

(For Rural Subscribers see Page 26)

A

Aberdeen Pharmacy 399 Aberdeen St	3218
Adkins B Grocery Store 539a N Railway St	3652
Adkins Wm A res 445 4th St	3119
Aitken J R res 26 8th St	3353
Akers F res 820 12th St	2474

ALBERTA CARTAGE & TAXI

CO H E Homer 701 1st St SE	2104
H E Homer res	2163

ALBERTA CLAY PRODUCTS

CO LTD Cor Clay and 6th St	2578
Factory Office T Graham & W C Yuill	2302
Pottery Division Industrial Site	3575
H C Yuill Mgr res 442 1st St SE	2283
J H Yuill res Erin Lodge 473 1st St	2485

ALBERTA FOUNDRY &

MACHINE CO LTD THE Foundry St	2553
--	------

ALBERTA GOVERNMENT TELEPHONES

Information regarding new subscribers and change of telephone numbers	92
Telephones out of order	93
Rural Operator	91
Long Distance Operator	0
Chief Operator	3417
Local General Office 5th St SE	3490
Manager's Office	3492

ALBERTA LINSEED OIL COM- PANY LIMITED THE 9th Ave SE

W A Church Manager's res	3348
Geo E White Secy res	2470

Allan—see also Allen

Allan Robert res 412 5th St	3055
Allan T G res 244 9th St S	3105
Allardyce Thomas res 957 5th St	3668

Allen—see also Allan

Allen E G res 318 Belfast St	2173
Allen M H res 452 8th St SE	2748
Allison L res 27 5th St SW	2368
Altin John Italian Groceries 505a N Railway St	3954
American Cafe Ben Quong S Railway St	2751
Amos E res 464 Belfast St	3833
Anderson A J res 503 Dundee St	2322
Anderson A V res 521 7th St	3190
Anderson C B res 537c 5th Ave	3622
Anderson Chas res 335 1st St SE	3434
Anderson G G res 825a 2nd St	2397

ANDERSON INSURANCE AGENCY

Huckvale Blk 668 3rd St	2481
Anderson J F res 1156 Yuill St	2060

ANDERSON SERVICE STATION

Battery Service 422 S Railway St	2297
Anderton J E res 911 S Railway St	3722
Ansley E C res 437 6th St	2366
Ansley Mrs H res 5 Diana Court	2664
Anson Wm res 504 11th St	3805
apEllis Gp Capt A res 340 2nd St SW	3931
Armouries 3rd St	3368
Armstrong Dr B C Phys & Surg 826 2nd St SE	2555
Armstrong Dr B C res 118 2nd St SW	3884
Armstrong Mrs Peter R res 205 1st St SE	3913
Armstrong Wm res 555 Aberdeen St	3940
Ashburner E res 110 8th St NE	3488
Ashley W S res 532c 4th Ave	3683
Askew Miss V E res 819 5th St	3436

ASSINIBOIA HOTEL CO LTD

3rd St SE	
Private Branch Exch connecting all rooms	2881
Manager's Office	2581
Astra Theatre 3rd St	2434
Atha A N res 404 8th St	2695
Atkins A res Ogilvie Place	3565
Atkinson G res 442 12th St	3146
Attrill F res 872a 4th St	3895
Austad T res 70 10th St NE	3848
Ayling R res 377 4th St	3613

B

Baillie Miss C res 3 Montgomerie Apts	3187
Bain Jas res 538b 6th Ave	2508
Baird George res 329 Belfast St	2688
Baker Mrs Amy res 541 7th St	3836
Baker Geo E res 15 7th St SW	2260
Baker V R res 522C 6th Ave	2135
Baldwin W H res 230 5th St	2708

BANK OF MONTREAL 616 2nd St

2004	}
2018	
Manager's res 5 2nd St SW	2335

BARRIE WM Plumbing & Heating

312 4th St SE	3122
Barton G res 610 Parkview Drive	3397
Bateman H H res 128 1st St NE	3578
Baumler Karl res 165 8th St NE	2576
Bean Mrs Edith res 255 Aberdeen St	3929
Beaton John R res 536 Belfast St	3471

BEAVER (ALBERTA) LUMBER

LTD cor 6th St & S Railway	2351
W D Lutes Local Mgr res 820 5th Ave	3660
Becker R C res 210 1st St SE	2086
Beeton Oswald res 144 2nd Ave	3969

PATTISON FUNERAL HOME

Funeral and Ambulance Service

PHONE

2214

AGENTS FOR MONUMENTS

Corner 5th Avenue and 2nd Street

PHONE

2214

YOU TOO CAN SERVE THE EMPIRE--- BUY WAR SAVINGS STAMPS AND CERTIFICATES

Begg W A KC Becker Blk	2105	Bromley R E Welding Shop 692 S Railway St ...	3142
Begg W A res 14 2nd St SE	2291	Bromley R E res 63 9th St	2611
Bell Mrs Ben res 412 Belfast St	2596	Brooks F J res 507 4th St	2530
Bell E A res 537 7th St	2729	Brookwick W J res 60 5th St SE	2343
BELL J A AGENCY THE		Brotherton G res 178 8th St NE	3484
Insurance & Financial Bkrs 643 2nd St SE.....	2728	Brough R B res 379 5th St	3773
Bell J A res 130 2nd St SW.....	2690	Brown M res 543 1st St	3563
Bell J T res 359 4th St SE.....	2290	Brown W res 126 3rd St SW	3401
Bellamy Jack A K res 53 2nd St SW.....	3705	Browne C Barton res 542 5th St	2631
Bennett W B res 540 6th Ave	2515	Browne H D res 12 Connaught Apts	3282
Bennis J res 535a Allowance Ave	3253	Bryan J W res 512 10th St	3315
Beny Charles Jr res 260 2nd St	2785	Buchanan W H res 460 2nd St	3029
BENY & SON LTD 410 South		BULLIVANT ISAAC Shoe Store	
Railway St		216 South Railway St	2480
Parts and Service Dept	2009	Bundy P W res 482 10th St	3340
Sales and General Office	3009	Burns A P Planing Mills 1st St SE	2229
Bergman Mrs E I res 508 8th St	3084	Burns A P res 538 1st St	3341
Berkley Shop The Ladies' Ready to Wear		Burns T A res 234 Aberdeen St.....	3739
609 3rd St	3345	Burton Wm A res 267 2nd St	2288
BEVERIDGE J C Furniture 620 2nd St SE	2226	Burwash T A res 506D 6th Ave SE	2488
Fred W Mills res	3816	Butchart R G res 520b 6th Ave	3433
Beveridge J C res 340 2nd St SW	3931	Butcher Rev Canon J F res 623 4th St.....	2091
Bieber Bros Grocery 546B Ash Ave	2066	Butcher Rev W F res 258 1st St	3619
Biggs Geo res 610 Spencer St	2316	Byers C H res 25 2nd St SE	3982
Bishop Edith N Beauty Shop 69 4th St SE	2014		
Bishop W A res 332 4th St SW	3325	C	
BLACK HARDWARE LTD THE		Cairney J res 1134 Ross St	2073
656 2nd St SE		Calder Robert res 478 8th St	2656
Store	2456	CALDWELL G A Decorator & Sign	
General Office	3126	Painter 426 4th St	3153
R C Black Mgr res	2588	Caldwell G A res 436 4th St SE.....	3153
Black R C res 275 3rd St SE	2588	CALGARY HERALD Local Agent	
BLAIR SLIM TAXI S Railway & 2nd St.....	2727	J Denhoff 406 2nd St	2979
Bomford E S res 813a 4th St SE	2607	Callbeck A A res 26 4th St	2776
Bond Clothes & Hat Shop 218 S Railway St	3875	Campbell Mrs D res 415 7th St	2740
Bond Roy O res 488 10th St SE	3640	Campbell Major J S res 233 1st St SE	2617
Booth Thos res 120 1st Ave S W	3242	Campbell Dr W C Physician & Surgeon Office	
Boschee Ed Trucking & Draying 880 Balmoral St	2565	826 2nd St SE	2030
Botter T A res 813b 2nd St	2345	Campbell Dr W C res 311 2nd St S E.....	3618
Botter's News & Fruit Store 652 3rd St	3456	Canada Colonization Ass'n 204 Huckvale Blk	3676
Boucher S A res 332 Aberdeen St	3662	CANADA LAND & IRRIGATION	
Bowker C F res 541b 6th Ave	3034	GO LTD Huckvale Blk	2428
Bowker P C res 138 9th St N	2591	D W Hays Gen Mgr res 36 1st St SW	2512
Boyd R S res 168 4th St SW	2716	J D Fairless res 329 9th St	3514
BOYD WHOLESALE		Elliott G MacDonald res 77 4th St SW.....	3912
Tobacconists and Confectioners 224 S Rly St	2402	CANADIAN BANK OF COMMERCE	
Boylan J F res 506 Aberdeen St.....	3161	THE M H Smith Mgr 2nd St & 6th Ave.....	2026
BOYLAN'S DRUG STORE		Staff Apartments	3632
607 2nd St	2202	Canadian Greenhouses The Elm St	2704
Bradley's Tire Shop 310 S Railway St	3874	Canadian Legion Club 2nd St.....	3135
Brain Sqdn Ldr A L res 520 7th St	3983		
Bray H E res 1052 1/2 Ross St	3673		
Bray Percy res 966 Queen St	3735		
Breakell Claude H res 828a 4th St	3380		
Breakell E R res 535 2nd Ave NE	2484		
Breakell R A res 878a 4th St	3201		
Brier H res 519 5th St	3601		
Brink T res 252 4th St	2524		
Bristow H R res 871A 3rd St	2136		
BRITISH AMERICAN OIL CO			
LTD Industrial Site	3112		
H M Odland Branch Mgr res	3620		

**Use
Long Distance**

**CO-OPERATE
AND SERVE YOUR COUNTRY**
3331 South Eastern Alberta Co-operative Assn. Ltd. 3331
J. S. McNAUGHT, Manager

Canadian Pacific Express Co Office CPR Station 2301

CANADIAN PACIFIC RAILWAY

Information re Passenger Trains 2406
GENERAL OFFICE—
 Superintendent E S McCracken 2426
 Chief Clerk L Newby
 Assistant Chief Clerk A E Smith 2442
 Asst Supt N A Link
 Asst Supt A L Lowe
 Division Master Mechanic J W Jackson
 Store Keeper and Car Foreman 3330
 Division Engineer W L Codrington 2587
 B & B Master G A Stephen 2587
 Yard Office 2127
 Locomotive Foreman (Shops) 2427
PASSENGER DEPARTMENT—
 Ticket Office Rail & Steamship E Schmid 2406
 Ticket Agent
 Baggage Room 3706
FREIGHT DEPARTMENT—
 Freight Agent H H Hall 2381
 Freight Office General Information for
 Rates etc 2106
 Shed Foreman 2383
 Pick-Up And Delivery Service 2104
COMMERCIAL TELEGRAPH—
 Telegraph & Cable Office S Railway & 2nd St 2254
 Messenger Errand & Distribution Service
 Manager's Office C D Hatch 3852

CANADIAN PACIFIC TRANSPORT

CO LTD S Railway & 2nd St 2254
 Messenger Errand & Distribution Service
 Canham W R res 538 Bank St 2387
 Cannings A G res 1059 Braemar St 3525
 Carioni Mrs E res 926 Ross St 3577
 Carlson Mrs W res 29 5th St SE 3572
 Carr Mrs F S res 222 4th St 3464
 Cawker E M Druggist South Railway & 2nd St 2178
 Cawker E M res 520 Cambridge St 2132

CECIL HOTEL 4th St SE 2851
 Private Branch Exchange connecting all rooms

CENTRAL GARAGE Ford Mercury &

Lincoln Service Cor 1st St and 6th Ave
 Service and Stockroom 3454
 Office and Sales 3451

CHAMBER OF COMMERCE

Cor S Railway and 2nd St 2327
 Chamberlain R M res 811a Braemar St 2267
 Charlton George S res 104 4th St SE 3712
 Charrett Flt Lt A W res 156 2nd St NE 3790
 Chocolate Shop The 515a 4th Ave 3311
 Choiniere J res 929 5th St 3425
 Chorley H C res 638 6th St S 3542
 Chrestenson L F res 43 9th St 2375
 Christie L W res 14 View Court 3830
 Church W A res 112 1st St SW 3348
 Cinderella Shop The Ladies' Ready-to-Wear 647
 2nd St 3468
 City Cafe 403 N Railway St 2329

CITY OF MEDICINE HAT

Mayor's Office City Hall } 3030
 City Clerk F Blackburn City Hall }
 Treasurer's and Tax Office City Hall } 2326
 City Treasurer and Comptroller H J Noble... }
 Supt of Utilities H O Davis 3947
 Engineer's Office E Ashburner 2726
 E Ashburner City Engineer res 110 8th St NE 3488
 Purchasing Agent E A Bell 3017
 Electric Dept F E Rathwell 2726
 F E Rathwell City Electrician res 333 8th St... 3494
 Police Dept J B McQueen Acting Chief City Hall 2380
 J B McQueen res 304 12th St 2609
FIRE HALL (Fire Alarm only) City Hall 3535
 Fire Hall (General Use only) City Hall 2992
 W E Hatcher Fire Chief res 513 1st St 3838
 Gas and Water Dept 2665
 R Bietz Gas and Water Formn res 137 3rd Ave 2087
 R G Cairns Pub Wks Formn res 541B
 Allowance Ave 2280
 Health Dept 2558
 Electric Sub Station 2503
 City Probation Officer E A Bell 3017
 City Relief Office Secy Miss M A Carson 2912
 Miss M A Carson res 8 Connaught Apts 2769
 Isolation Hospital Powell Sub-division 3629
 Hillside Cemetery (Call 91 and ask for X202)
 City Pound 722 2nd St SE 3303
 Clark Jack B res 1 Connaught Apts 3772
 Clark William res 743 1st St SE 3742
 Clarke Mrs Joe B res 418 Dundee St 3506
 Clay R A res 339 6th St 2450
 Clee J C res 12a View Court 3214
 Clelland J Tailor 439 N Railway St 3036
 Cobb Miss E res 1 Montgomerie Apts 3973
 Cockburn Mrs S res 734 9th St 2976
 Codrington W L res 360 1st St 2684
 Coffee Pot The 619 2nd St 2711
 Colborne J B res 268 8th St 3530
 Collier George res 323 9th St 3266
 Collins W res 835a 2nd St 3268
 Colter D A res 128 8th St NE 3160
 Congdon B A res 350 7th St SE 3162
 Congdon K G res 263 6th St 2585
 Connaught Golf Club 13th St 3803
 Connell Mrs Nellie res 69 11th St N 3538
 Conner Nat res 47 2nd St N W 3536
 Connolly A res 53 7th St 3752
 Connor J W res Fewings Apts 247 2nd St 2396
 Connors F B res 245 1st St 3717
 Connors J P res 15 8th St SE 3818

CONTINENTAL AUTO SUPPLY
LTD 322 S Railway St 3088

COOK A B Jeweller & Optician 645 2nd
 St SE 2378
 Cook Mrs M res 11 Montgomerie Apts 2543
 Cook Thos W res 250 Division Ave 2305
 Cooper Miss Ivy D res 337 4th St 3363

CO-OPERATIVE ASSN SOUTH
EASTERN ALBERTA LTD 325 6th
 Ave 3331
 Cope E L Plumber & Tinsmith 535 3rd St 3448
 Cope E L res 410 Dundee St 3583

Directory Advertising Pays

Crystal Dairy Limited

2777

233 - 5TH STREET

2777

Copp L C res 532 6th Ave3776

CORONA HOTEL Owned and Operated

by Cantalini Hotels Ltd 5th St3154

Cory M A res 239 1st St SW2670

Cosmopolitan Hotel The T Bassett S Railway St.2052

Coursey H W res 430 7th St2649

Court House—(See Provincial Government)

Court J E res 50 4th St SE2186

Cousins-Elliott Ltd Bonds & Ins 217 6th Ave3347

Cousins Wm res 271 1st St SE2084

Cove A D res 875 3rd St3587

COVE BROS MEAT MARKET

503b Allowance Ave2620

Cove H J res 931 Balmoral St3951

Cowan W N res 62 4th St NW2462

Cox H W D res 453 7th St SE2955

Craig Lloyd res 261 4th St SW2566

CRANE'S FURNITURE REPAIR

659 1st St3545

Cranmer W A res 2021 Crescent View.....3496

Crawford C C res 16 View Court3016

Crawford R res 358 Cambridge St3371

Crawford Mrs Wm res 9 1st St SW2016

Cresswell Mrs F E res 585 Hill Road3466

Crockett F A res 430 4th St3057

Crockett James res 248 2nd St2651

Crockford Geo H res 306 3rd St2554

Crockford W H res 1172 Balmoral St3352

Crowther Alfred res 1214 Bridge St3814

Crysler Howard res 433 7th St2632

CRYSTAL DAIRY LTD Orders

233 5th St2777

General Office3777

A T White res3329

Cunliffe R T res 506 Belfast St2050

Currie Miss Annie res 424 Dundee St3256

Currie W M res 270 9th St SE3310

Customs Canada Collector of Customs2567

Cuyler J T res 124 4th St SW2720

Cypress Club Club House 6th Ave SE2179

D

Dailey T M res 27 9th St N E3961

Daniel J C res 222 Belfast St3375

Darley D B res 503 5th St3608

Darling Dress Shop The 628 2nd St2240

DAVE'S MEAT MARKET 634 3rd St 3234

C J Macara Mgr res3235

Davidson J Art res 367 7th St3616

Davidson James R res 27 4th St SW3404

Davidson R B res 34 8th St3890

Davies E LI res 419 5th St SW2058

Davies J E res 173 2nd St SW2927

Davies W A res 69 4th St SW3463

Davis H O res 251 6th St2024

Davison G H res 371 Belfast St2371

Davison P res 422 10th St2970

Dawkins W S res 355 7th St SE2916

Dawson Mrs Phyllis res 483 12th St2536

DeCoursey Miss Hazel res 473 7th St3537

Deliveries Ltd 527 2nd St3636

Delong W J res 815 7th St SE3046

De Mings Fred res 871 1st St3893

Dempster J & Co John Deere Agts 215 N

Railway St2661

Dennis W H res 444 4th St2755

Desharnais Eugene res 561b Maple Ave3429

DIXON DR HOWARD C Phys &

Surg 234 1st St SE3062

Dixon John res 321 4th St2534

Dixon W J res 751 4th St3106

DODGE & DE SOTO SALES &**SERVICE** Medicine Hat Garage 524 2nd

St SE2379

Doering Rev A P res 264 Aberdeen St3883

DOMINION BANK THE W S Ashley

Mgr 3rd St & 6th Ave3663

DOMINION FRUIT LTD Wholesale Fruit

& Tobacco Maple Ave & Queen St

Office2929

Warehouse2939

Dominion Govt Dept of National Defence

RAF Service Flying Training School No 34

Airport2841

Private Branch Exchange Connecting all Depts

Men's Canteen S F T S No 342015

Radio-Meteorological Office3040

Holsom Field3842

Experimental Field Station Suffield

Call Long Distance

Dominion Govt PFRA 11 Post Office Bldg2429

District Engineer Charles Moore

Dominion Govt P F A A & W A R 4 Post Ofc Bldg 2510

Dominion Govt Unemployment Insurance Commission

7 Post Office Bldg2222

Dominion Prov Youth Training D Program

Cor 2nd St & Allowance Ave2337

Donaldson Mrs J res 744 4th St2759

Donaldson J T res 170 9th St3180

Douglas J W res 276 Belfast St3592

Dowkes Charles res 411 2nd St3767

Downing L M res 143 3rd St NW2938

DOWSON E N 530 2nd St2146

Commercial Printing & Loose Leaf Supplies

Dowson E N res 305 2nd St2768

Doy T res 811 5th St3230

Driscoll M res 1035 Ross St2408

DUGGAN H O & CO Stocks and Bonds

562 2nd St3144

Duggan H O res 443 1st St SE3510

Dunham F S res 236 Belfast St2362

Dunn George A res 535 Belfast St3077

Dunn Harold res 930 5th St3023

Duxbury W H res 770 8th St3275

E**EATON CO WESTERN LTD (THE T)**

Branch Store Cor 3rd St and 6th Ave

Toiletries Hosiery Notions Candy Men's Wear

Shoes2941

Office Ladies' Wear Blankets Dress Goods.....2942

Hardware2943

Furniture Radios Refrigerators House Furngs.....2949

Eaton Walter res 505G Allowance Ave2637

Economy Grocery 803 7th Ave3809

For A QUICK START
A CLEANER MOTOR
AND
GREATER MILEAGE



Use
GRIZZLY
"SEVENTY-SEVEN"
GASOLINE

IT'S DUBBS CRACKED!
IT'S DIFFERENT!
IT'S BETTER!

REFINED ESPECIALLY FOR MOTORS
DEMANDING A FUEL WITH HIGH-
KNOCK SUSTAINING VALUE

Marketed in Alberta

EXCLUSIVELY BY

SEVENTY-SEVEN OIL COMPANY

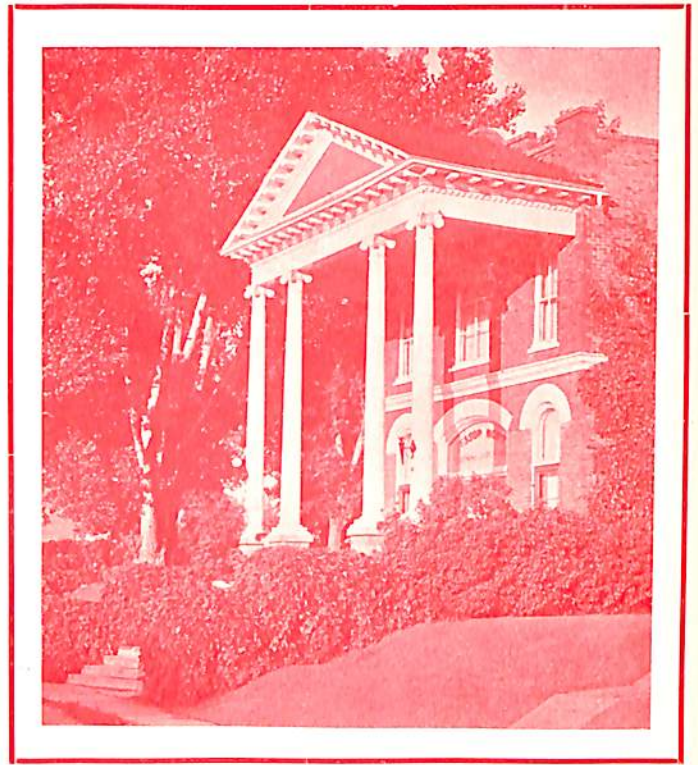
320 9th STREET SOUTH

LETHBRIDGE

ALBERTA

Telephone 2775

NOTT'S FUNERAL CHAPEL ❖



MONUMENTS

LINCOLN AMBULANCE SERVICE

SPECIAL EQUIPMENT FOR THE COMFORT
OF PATIENTS ON RAILWAY JOURNEYS

PHONE

2306

321 5th STREET S.E.

MEDICINE HAT

POSTER ADVERTISING

PHONE
3346

HONALD SIGNS

PHONE
3346

**BULLETIN, WALL, GOLD, GLASS, OFFICE, WINDOW
and TRUCK LETTERING**

Dominion Bk. Bldg. REG. HONALD, Mgr,

Gilchrist Miss M L res 60 1st St NW	2738
Giles James W res 472 11th St	3670
Gillis G A res 526c 5th Ave	3423
Glaser Mike Draying & Trucking 1013 5th St	3332
Gleaves Geo N res 224 7th St	2216
Globe News & Tobacco Store S Railway St	3775
Goff B C res 3 Diana Court	2070
Goff J res 869a 5th St	2386

GOFF'S GROCERY

541a Allowance Ave	3012
Goldie Hugh res 519e Allowance Ave	2956
Goode W M res 138 2nd Ave SE	3060

GOODFELLOW'S TRUCK SERVICE

530 4th Ave N	3502
Gordon Miss M E res 69 1st St NW	2987
Gordon R A res 753 Spencer St	3796
Gordon Ralph O res 669 9th St	3634
Gospodar P A res 52 10th St N	2702
Government Liquor Store 525 2nd St	2360

GOW WALTER D Barrister

217 6th Ave	3351
Gow Walter D res 322 10th St	2463
Graden W R res 876 Braemar St	3243
Graham A H res 37 9th St SE	2653
Graham Thomas res 526c 4th Ave	2662
Graham W T res 307 7th St	3438

GRAHAM'S GROCETERIA

Store No 1 544c Princess Ave	2628
Store No 2 W T Graham 395 Aberdeen St	3638
} 3738	
Grain Inspector's Office 203 Huckvale Blk	3366
Grant D S res 66 Aberdeen St	3603
Gray James res 423 1st Ave N W	2682
Gray Mrs W H res 8 Aberdeen St	2732

GRAYSON FEED STORE Mulligan Blk

6th Ave	3657
Greene Mrs Geo W res 77 1st St SW	3145

GREYHOUND TRAVEL BUREAU

3rd St	2101
Griffin H res 4 5th St SW	3387
Griffith B A res 543 Cambridge St	3693
Gust Mrs L E res 439 5th Ave	3427

GUST S E STORES THE

No 1 Store 626 3rd St	2502
Gustafson S R res 855 Braemar St	2730

H

Haley F E res 334 1st St	3807
Hall F res 29 10th St	3148
Hall H H res 460 Cambridge St	3281
Hall J E res 34 9th St SW	2561
Hall W res 364 10th St SE	2002
Hall W J res 137 12th St NE	3556
Hallworth J H res 1003 Ross St	2563
Hamilton Mrs J W res 448 Division Ave	2657
Hamilton J W res 369 5th St	3390
Harding Mrs W F res 677 7th Ave	3132
Hargrave Miss Edith M res 156 3rd St N	2011
Harper Miss Mildred E res 864 3rd St	3631
Harrison R W res 444 8th St SE	3778
Harrison William res 137 2nd Ave	2713

Hartley A E res 443 Dundee St	3432
Harvey Eric res 506 9th St	3692

HARWARD'S HOUSE OF FLOWERS

531 3rd St	2233
E Ward res	2130
Miss Mildred E Harper res	3631
Hat Grocery M L Wright 507b Allowance Ave	2012
Hatch A J res 503 5th St	2958
Hatch C D res 280 Prospect Drive	3870
Hatcher W E res 513 1st St	3838
Havard R E res 340 5th St	3205

HAVARD'S SHOE STORE 661 3rd St

Haworth R E res 433 Maple Ave	3215
Hawthorne Mrs A C res 253 3rd St SE	3930
Hawthorne Mrs A C res 253 3rd St SE	2088

HAWTHORNE A C & SON LTD

Men's Clothing 234 S Rly St	2523
Hawthorne Don S res 502a 3rd Ave	2766
Hays D W res 36 1st St SW	2512
Heckbert E E res 355 8th St	2969
Hediger Rev Paul R res 1120 Yuill St	2770
Hedley Shaw Milling Co Ltd—See Maple Leaf Milling Co Ltd	

Hedlund Albert res 225 3rd St S E	2314
Hedlund David res 454 12th St	3846
Hehr E res 1002 Allowance Ave	2312
Hehter G Massey-Harris Dir 329 N Railway St	3701
Henderson James res 17 4th St S E	3837
Henderson Mrs W W res 520 Belfast St	3522
Hepburn P C res 284 6th St SE	3880
Herrington Miss Jean res 520 3rd St	2231
Hider R G res 306 7th St	2686

HIEB WM & SON Trucking 927 Yuill St

Highton R W res 68 Aberdeen St	2996
Highton R W res 68 Aberdeen St	3917
Hill John res 216 7th St	3746

HILL SERVICE GARAGE THE 351

Cambridge St	2446
G J Emery Prop res	3446
Hillenberg Mrs D res 836a 5th St	2584
Hitchcox A res 764 4th St	3137
Hobday A res 829a 5th St SE	2356
Hoffman T res 1051 5th St	2959
Hole James res 1027 Ross St	3562
Holley Ernest res 554 11th St	3763
Holmes A H res 405 12th St	2714
Holmes Mrs R res 811 11th St	3871
Homer Mrs Alice res 336 7th St	2263
Homer H E res 362 7th St	2163
Honald Signs Dominion Bank Bldg	3346
Hooper Mrs A W res 1122 Ross St	3019
Hooper Albert res 43 9th St NE	2245
Hopper L H res 5 1st St SE	2764
Horne K res 384 10th St	3850
Horricks Rev H M res 1115 Yuill St	2253
Hosie Miss Bessie res Elm St School House	2115

HOSPITALS

General Hospital 2nd St SE	2856
Nurses' Home 5 pm to 10 pm only	2763
Maternity Hospital Ash Ave	3342
Hotson G E res 460 10th St	2082
Houlden A H res 320 8th St SE	3254
Howells Sqn Ldr B H res 352 1st St	2324
Howson Geo res 32 3rd St SW	2966
Hub The Harry Fefferman 228 S Railway St	2457

PATTISON FUNERAL HOME

Funeral and Ambulance Service

PHONE

2214

AGENTS FOR MONUMENTS
Corner 5th Avenue and 2nd Street

PHONE

2214

Huckvale Mrs W res 251 1st St	2008
Hudson C A res 244 5th St	3784
Hughes Albert res 605 1st St	3450
Hughes Miss Eileen res 350 Cambridge St	3171
Hughes M res 266 7th St	3424
Hunt C S res 403 4th St	2373
Hunt R Plumber 526 3rd St	3014
Hunter N E res 404 Aberdeen St	3381
Hutchings H R res 428 1st St	3489
Hutchinson T res 50 2nd St SE	3274

HUTCHINSON T CO LTD THE

623 3rd St SE	2064
H R Hutchings Prop res	3489
Hutchison A E res 440 8th St	3480
Hyde Miss Willena res 427 Dundee St	2496

I

Imperial Oil Limited A Irwin Agt Industrial Site	3003
Inglis Gordon res 548 7th St S	3412
Ingram T N res 488 8th St SE	2124
International Harvester Co Agcy 746 2nd St ..	3005
Ireland H S res 861 1st St SE	2388
Ireland H W res 333 2nd St SE	2207
Irvine A D res 411 Aberdeen St	3607
Irving Rev S H res 459 4th St	2237
Irwin Mrs A res 847 Braemar St	2642
Isolation Hospital Powell Sub-division	3629
Isom Walter A res 44 8th St NE	3071
Isaac Miss Edith res 171 3rd St NW	2236

J

Jackson Fred E res 516c Maple Ave	3598
JACKSON DR J W Chiropractor	
459 1st St	2370
Jam Chong Market Gardener 1st St NW	3667
Johnson Mrs A K res 60 9th St S W	3605
Johnson F N res 521b 5th Ave	3317
Johnson Percy res 382 13th St	3841
Johnson R T res 429 8th St SE	2742
Johnson Warden res 522a 3rd Ave	3580
Johnston Chas L res 540 6th Ave	3696
Johnston Harold C res 378 1st St SE	3975
Johnston Miss L E res 435 Dundee St	2952
Johnston W C res 172 4th St NW	3909
Jones S E res 241 3rd St S	2277
Jordan H E Snappy Tailors 664 2nd St	3226
Jordan J S Real Estate & Ins 526 2nd St	2940
Jordan J S res 130 5th St SW	2984
Jorgensen T res 724 3rd St	2232

K

Keating R E res 12 5th St SW	3817
Kee Miss Jessie M res 21 View Court	3520
Kelly Miss Eleanor J res 929 Dominion St	2313
Kennedy W A res 416 Belfast St	3963
Kent J C res 405 5th St	2983
Kent R H Insurance 528 2nd St SE	3553
Kent R H res 33 5th St	2092
Keohane J res 554 Cambridge St	2687
Ker J H res 571 10th St SE	3832

Kilduff Thos res 482 8th St	3044
Killins R W res 815 8th St SW	3195
King E res 437 1st Ave NW	3547
Kinnaird Thos res 800 Allowance Ave	3682
Kinnaird's Transfer 513c North Railway St.....	3656
Kinvig T G res 365 Belfast St	2571
Kirkness A res 759 5th St	3073
Kjeldgaard H P res 121 12th St	3385

KLEMM ELECTRIC R Klemm 120

S Railway St	3224
Klemm R res 1020 Ross St	3824
Knight Mrs K res 106 5th St	2331
Knight S J res 438 11th St SE	2423
Knight Thos W (CPR) res 347 Aberdeen St ..	2438
Knight W res 38 6th St SW	2793

KNODEL MATHIAS Grocery & Meat Mkt

619 7th Ave	3760
-------------------	------

KNOWLES ELECTRIC Maurice Knowles

510c Allowance Ave	2108
Kohn Louis res 96 3rd St	3555
Kope E A res 962 Ross St	2925

KOPE & MELLOR Service Station

Cor 5th Ave and 3rd St	3388
Kyle Arthur H res 527 Belfast St	3527

L

Lacey R H A res 420 Cambridge St	3733
Laidlaw Lorne res 24 1st St SW	2933
Laidlaw Niblock & Stone Barristers Bank of	
Montreal Chambers	2128
Laing—see Lang	

LAKE OF THE WOODS MILLING

CO LTD (Five Roses Flour) South Rail-

way St	
Sales Dept	2155
Grain Dept	2055
Colin A Moir Manager	2255
F Tonkin Mill Supt Office	2255
D C McIntyre res	2660
F Tonkin Mill Supt res	2157
Colin A Moir Manager res	2655

La Marsh Mrs I res 503 1st St	2574
Lamb Andy res 212 13th St	2589
Lambert H W res 203 2nd St	2725

LANG BROS LIMITED Insurance Fire

Automobile Burns Block 651 2nd St SE	3554
Lang Hector res 538 7th St SE	3658
Lauder G W res 1075 Dominion St	3687
Lauder R res 21 Connaught Apts	3284

LAUDER'S BICYCLE SHOP

121 6th Ave	2328
Lawrence J Huver res 550 10th St	3158
Laws Walter res 92 3rd St SE	2580
Layton C B res 541 6th St	3478
Layton Rev R B res 45 8th St	3532
LeCours E A res 356 Belfast St	3878
Le Drew K W res 110 4th St	2432
Lefever D A res 278 2nd St	2315
Lefever H A res 626 Spencer St	3457
Lem Blick Barber & Beauty Shop Huckvale Blk ..	2414

JOE L. LEVINSON

HIGHEST CASH PRICES PAID

SKUNKS - BADGER - WEASELS - COYOTES - RABBITS
COW HIDES - HORSE HAIR - PELTS - WOOL

2160

314 SOUTH RAILWAY STREET

P.O. Box 262

Lent B res 530B 6th Ave	3324	Mackinnon Mrs Margaret res 634 3rd St.....	2075
Leong Bill Market Gardener 021 7th Ave	2590	Macleod—See also McLeod	
Le Page A J res 125 1st Ave SW	2712	MACLEOD DR J S Phys & Surg	
LE PAGE STORE THE General Mer-		Office 419 1st St SE	3365
chants 640 3rd St	3877	Maher L A res Empress Theatre 6th Ave SE	3116
Lesk Benjamin res 49 2nd St SW	3665	Maillet R J res 25 10th St	2994
LESK'S FURNITURE STORE		Man Yick Hing Grocery 515a N Rly St	2541
627 3rd St	3664	Manarey G E res 205 2nd St	2577
Leveque Russell P res 244 Aberdeen St	2928	Manning T W res 817a 3rd St	2348
Levinson Joe L Raw Furs & Hides 314 South		Mantz E A res 1061 Ross St	2077
Railway St	2160	MAPLE LEAF MILLING CO LTD	
LEWIS' BARGAIN STORE 619 3rd St	3370	Industrial Site	2831
Lewis Harry res 436 2nd St SE	3378	General Office & Order Desk	2831
Lindsay J D res 351 Aberdeen St	2538	R G Butchart Manager	2833
Lindsay Robert A res 262 4th St	2118	J Elder Asst Manager	3360
Linfield C A res 639 9th St SE	2552	C F Bowker Accountant	3369
Link N A res 261 5th St	3216	R M Robertson Sales Supervisor	3369
Lippert & Sailer Garage 645 7th Ave	2410	R G Butchart Mgr res	3433
Little Beauty Salon The Edith Jesse 645 2nd St	2630	J Elder Asst Manager res	3567
Little F G res 314 7th St	3666	MARBEN AUTO SERVICE J M Pettit	
Lockwood A S res 220 4th St	2443	Mgr 1st St & 6th Ave	3070
London Life Insurance Co Dominion Bank Bldg	3531	Marr C M res 1121 4th Ave	2680
H J McCallum Representative		Marsh F Garage & Auto Wrecker 1221 7th Ave	2031
Lovett W S res 6 12th St	2753	Marsh J P res 411 Belfast St	3561
Lowe A L res 169 5th St	2535	MARSH PLUMBING & HEATING	
Lowe R H res 842 3rd St	2932	650 3rd St SE	3655
Ludwig H res 488 9th St	2648	Marshall A E res 103 7th St SW	3355
Lutes W A res 116 5th St SE	2741	Marshall A J res 23 View Court	3262
Lutes Willard D res 820 5th Ave	3660	MARSHALL AUTO WRECKERS	
Lutz F res 770 9th St S	3970	729 2nd St	3344
Lynch Miss J res Purmal Sub-division	2926	Marshall Mrs M E res 533b Allowance Ave	2251
Lynch Wm L res 550 5th St	3946	Marshall Val res 238 4th St SW	2198
		MARSHALL'S BOOK STORE General	
M		Stationery Office and Legal Supplies 621 2nd	
M T Taxi 645 3rd St	2440	St	3633
Macara C J res 10 Diana Court	3235	Martin's City Transfer 1254 Queen St	2507
MacCallum James L res 153 2nd St SW	3966	Martyn C D res 28 View Court	3483
MacCharles Dr D N Phys & Surg Office 826 2nd		Masonic Hall Lodge Rooms 4th St SE.....	2377
St SE	2030	Maternity Hospital Ash Ave	3342
MacCharles Dr D N res 874 2nd St SE	2029	Matthews E E res 20 2nd St SW	3031
Macdonald Mrs Colin D res 548 Dundee St	2548	Matthews Harry res 30 7th St NE	3208
MacDonald Duncan res 150 2nd St NE	2762	Maxwell T A res 310 Ash Ave	2010
MacDonald Mrs E B res 546a 6th Ave	3747	May Albert D res 240 Aberdeen St	3422
Macdonald Elliott G res 77 4th St SW	3912	May Gordon F res 73 8th St	2242
MacDonald Miss Kate res 820 1st Ave	3762	Mayberry T R res 1031 5th St SE	2417
MACDONALDS CONSOLIDATED		MAYFAIR THE Ladies' Ready-to-Wear 601	
LTD Wholesale Grocers N Railway St		2nd St	3888
Sales Dept	2745	MAYNARD'S AUTO TRANSFER	
Shipping Dept	2744	Herbert Maynard Prop 488 11th St	3165
Manager & Credit Dept	2080	McAffer R res 728 Spencer St	3167
MacGregor H A res 534 11th St	2595	McArthur G L res 247 2nd St	2235
Mackay H A res 1146 Balmoral St	3064	McCabe C res 1 Souch Blk	2274
MacKenzie—see also McKenzie		McCaig Lorne res 1028 9th Ave	3440
MacKenzie Donald res 506a 6th Ave	2685	McCallum H J res 215 Aberdeen St	2542
MACKENZIE DRUG CO 423 N Railway		McCaslin John E res 803a Braemar St	3091
St	2667	McCOLL-FRONTENAC OIL CO LTD	
Mackenzie J R res 226 1st St	3503	S Railway St	2022
Mackenzie K C res 154 1st St SW	2636	Geo H Crockford Agt res	2554
Mackenzie N R res 359 Cambridge St	3602	Service Station J M Pettit Cor 1 St & 6 Ave	3070
Mackinlay Mrs A res 16 Montgomerie Apts	3839	McCOMB F J Electrical Cont 655 2 St SE-2573	
MacKinnon M res 443 Aberdeen St	3260	Harold Dunn Manager res	3023

PATTISON FUNERAL HOME

Funeral and Ambulance Service

PHONE

2214

AGENTS FOR MONUMENTS

Corner 5th Avenue and 2nd Street

PHONE

2214

McCombs J A res 852-A 5th St SE	2359
McCombs W E res 839-A 5th St	3475
McCoy Rev E J res Altwana	2265
McCracken E S res N Railway St	3246
McCully Mrs J res 509 3rd St	2710
McDonald G Lloyd res 558 Cambridge St	3283
McDonald W R res 54 3rd St SW	3104
McDougall Mrs A L res 361 9th St SE	3544
McDougall D L res 28 2nd St SW	2449
McEwen Dr S F res 950 Belfast St	3024
McGee J G res 164 3rd St SW	3011
McGowen Barber Shop & Beauty Salon The 639 2nd St SE	3051
McGregor—See MacGregor	
McIntosh Geo res 1163 Balmoral St	3402
McIntyre D C res 133 3rd Ave	2660
McKay Ross res 539 Dundee St	2579
McKay T M res 852 2nd St	2382
McKEE DR E L Dentist 654 3rd St SE	3945
McKenzie—See also MacKenzie	
McKenzie Wm res 383 10th St	3626
McLane J W res 246 2nd St SW	2968
McLellan Miss Margaret res 9 Diana Court	3644
McLennan J W res 303 8th St	2317
McLeod—See also Macleod	
McLeod A res 505 Aberdeen St	2746
McLeod D W res 138 3rd Ave	3467
McLeod J W res 262 Belfast St	3229
McMann Mrs David res 558 4th St	2141
McMullen R W res 837a 3rd St	3729
McNaughton A S res 85 4th St	3866
McNichol Mrs P H res 78 1st St	3955
McPherson's Barber Shop & Beauty Parlour 648 3rd St	3338
McQueen Fred W res 364 4th St SW	2935
McQueen Peter res 540 Aberdeen St	3043
McWaine Fred res 1054 Yuill St	2618
McWilliams R res 752 9th St	3050
Medalta Potteries Ltd Industrial Site	3585
MEDICINE HAT BAKING CO LTD See Weston's Bread & Cake (Canada) Ltd	2501
MEDICINE HAT BRICK & TILE CO LTD Industrial Site	2493
H J Sissons Mgr res	3090
Medicine Hat Cartage 845 7th St SE	3143
MEDICINE HAT CLINIC 826 2nd St SE	2030
Dr F W Gershaw	2030
Dr D N MacCharles	2030
Dr W C Campbell	2030
Dr G G Elder	2555
Dr S F McEwen	2555
Dr B C Armstrong	2555
Dr F W Gershaw res	3614
Dr D N MacCharles res	2029
Dr W C Campbell res	3618
Dr G G Elder res	3080
Dr S F McEwen res	3024
Dr B C Armstrong res	3884
MEDICINE HAT GARAGE 624 2nd St SE	2379
Dodge & De Soto Cars & Dodge Trucks	
George Atkinson Mgr res	3146

MEDICINE HAT GREENHOUSES

LTD 10th Ave SE	2431
Nights Sundays & Holidays	
J Bennis res	3253
R M Morris Manager res	2330
Medicine Hat Ice Co 39 Division Ave	3702
Medicine Hat News Ltd The Business Office & Job Printing 6th Ave SE	2028
Editorial Office	3452

MEDICINE HAT POTTERIES

Industrial Site	3575
Medicine Hat Rink Co 5th Ave	3980

MEDICINE HAT STEAM LAUNDRY

CO LTD Office 873-A 2nd St SE	2005
Megley Michael H res 262 Belfast St	3844
Mellor J B res 137 9th St NE	3925
Mennear Martin res 112 11th St Cres Hghts	2706
Merchant James res 278 7th St	3593
Michie Wm res 161 7th St	3590
Middleton C res 738 3rd St	3564
Middleton Ed res 177 3rd Street	3950
Middleton J L res 436 Belfast St	3225
Miller Frank res 533 Aberdeen St	3453
Miller G res 406 2nd St	3582
Miller Matthew res 450 8th St	3584
Miller W res 166 7th St	2634
Millican Mrs J R res 15 View Court	2159
Mills A R res 730 3rd St	2332
Mills Fred W res 245 2nd St SW	3816

MILLS' GREENHOUSES T E Mills

Prop 1035 Yuill St	2227
Milne E L res 319 8th St SE	3264
Minor G H res 38 4th St NW	2601
Mitchell Douglas J res 845a 2nd St	2991
Mitchell Jas res 504 1st St SE	2161
Mitchell Jas Feeding Co Factory St	3129
Mitchell Miss M res 305 1st St	2516
Mitchell Robert res 404 1st St	3255
Modern Cafe The Chow Hoy 427 N Railway St	2435
Mogridge Wren res 356 11th St S	3855
Moir Colin A res 553 5th St	2655
Mollard J E res 396 Belfast St	3336

MONARCH THEATRE CO LTD

609 2nd St	2603
L A Maher Mgr res	3116
J H Yuill res	2485
Monkley L res 512-C 6th Ave	3854
Montgomery Mrs G E res 445 7th St	3002
Montgomery T res 17 9th St	3045
Moore Mrs Fannie W res 222 4th St	2165
Moore H A res 430 Cambridge St	2788
Moore J C res 6 View Court	3801

MOORE J J & SON Furniture Store

532 2nd St near Medicine Hat Garage	2787
H A Moore Mgr res 430 Cambridge St	2788
Moore Dr Milton L Dental Surg 644 2nd St	2627
Moore Dr Milton L res 613 5th Ave SE	3684
Moore T A res 8 Diana Court	2248
Moose Lodge 1141 Elm St	3860
Morris E J res 338 4th St	3181
Morris E L res Fewings Apts 247 2nd St	3386

**YOU TOO CAN SERVE THE EMPIRE---
BUY WAR SAVINGS STAMPS AND CERTIFICATES**

Morris R M res 965 4th St SE	2330
Morris William R res 22 View Court	2363
Morrison Helen T res 117 11th St	3134
Morrison Miss I Dry Goods 517a 4th Ave	3516
MORRISON DR J D Dentist Porter Blk	3277
Morrison Dr J D res 26 1st St	2568
Morrison J R res 49 8th St N	2264
Morrison James res 489 7th St	3169
Morrison O J res Pottery St	3858
Morrison Vincent res 167 1st St SW	2139
Morrison W res 311 4th St	2922

MORRISON'S CITY BAKERY

613 3rd St	3227
Morrow Mrs J W res 414 1st St	2238
Moyer J L res 34 4th St	3052
Mulholland W res 342 8th St	3359
Munro J G res 1210 7th Ave	3750
Murphy A W res 449 9th St	3124
Murphy P J res 63 4th St	2504
Murray A res 945 5th St SE	2526
Murray C L res 372 12th St	2310
Murray Thos res 114 3rd St NE	2120

MURRAY'S BEAUTY STUDIO

659 3rd St	2677
Muxworthy R D res 808B 4th St	2945
My Wardrobe Cleaning & Pressing 565 2nd St SE	2505

N

Naismith J M Dental Laboratory 367 2nd St	3130
Napier R M res 61 2nd St SW	3186

NASH-SIMINGTON CO LTD

See Dominion Fruit Ltd	
Nason W E res 1003 3rd Ave	2223
National Fruit Co Warehouse S Railway St	2272
Office	3569
National System of Baking 617 2nd St	2675
Nelson Mrs M res 503 12th St	3405
Nelson Miss Marjorie V res 387 5th St	3910
Nelson Mrs Robt res 203 N Railway St	3710
Nesting O E res 430 Belfast St	3015
Nesting Mrs T O res 506b 6th Ave	3474
Newby Leonard res 220 9th St SE	3680

NEW CLUB CAFE 638 2nd St

Newcombe Arthur P res 342 Cambridge St	3534
Newman Miss Doris res 852 Braemar St	3213

NEWS THE Business Office and Job

Printing 6th Ave SE	2028
Editorial Office	3452
Niblock C W res 71 5th St SW	3486
Niblock Miss N res 377 4th St	2608
Nichol Robert M res 860 3rd St	3789
Nichols L W J I Case Agt 740 2nd St	3182
Nicholson D res 57 7th St SE	3708
Nicholson D A res 20 4th St	2980
Nicholson G L res Prospect Drive	3792
Nicholson L D res 528 Dundee St	2550
Nimmo G C res 160 3rd St SW	3685
Nixon D L res 427 5th St	2276
Noble H J res 137 8th St NE	3979

Noble W A res 605 5th Ave	2733
Noland A E res 507 Dundee St	3935
Noonan J B res 41 4th St	2444

NORRIE & FAWCETT LTD

Farm Implements South Railway St	2668
Norrie J A res 856 4th St	2466
Norris D A res 535 Dundee St	3237
Norris D A & Co Elect Appliances 549 3rd St	3650

NORTH STAR OIL LTD Norrie &

Fawcett Ltd Agts S Railway St	2668
Plant	2669
Noton J R res 540B Ash Ave	3972

NOTT J JESSOP FUNERAL

CHAPEL 321 5th St SE	2306
Ambulance Service	
Nott J Jessop res 76 3rd St SW	3306
Novak Frank res 341 2nd St	3965
Noviski Wm A res 524 S Railway St	2407

O

O'Coffey D res 515b Allowance Ave	3812
O'Connor E res 60 8th St N	2319
O'Connor Letellier res 218 Altawana Ave	3788
Oddfellows' Hall Cor 3rd St & 4th Ave	3228
Odland H M res 720 9th St	3620

OGILVIE FLOUR MILLS CO

LIMITED THE 9th Ave SE	3206
City Orders	3203
	2034
General Office	3206
Assistant Comptroller L Monkley	3203
Accountant G L McArthur	2034
Sales Dept C J Kent	3206
Sales Dept F H Agar	3206
Grain Department M Hughes	2034
Traffic Department	3203
Mill Office E Reilly Head Miller	3990
Supt of Country Elevators A R Mills	2034
Manager A Atkins	2977

RESIDENCES

A Atkins Manager	3565
L Monkley Asst Comptroller	3854
Oliver F M res 202 1st St SW	3391
Oliver Martyn & Co Chtd Accts 20 Becker Blk	2519
Oliver W W Dry Goods 527 3rd St	3004
Oliver W W res 233 Belfast St	3869
O'Rourke Mrs J R res 54 4th St SE	3168
Orr Fred H res 463 9th St	3239
Osborn W C res 939 Braemar St	3843
Osborne Bud res 1006 Ross St	3444
Osborne T R res 113 2nd St SW	2747
Ostrander Miss Eleanor res 508c 6th Ave	3095
Ott's Cartage Alex Ott 1121 Dominion St	2930

P

Pace W E res 5 8th St NE	3647
Page Mrs R res Med Hat Golf Club	2671
PALACE BAKERY 547a 6th Ave	2266
Palmer W J res 244 4th St NW	2492
Park Miss Barbara J res 236 4th St NW	3756
PARK GARAGE LTD R E Keating Mgr	
645 1st St	2295
Plymouth Chrysler Cars & Fargo Trucks	

PATTISON FUNERAL HOME

PHONE

2214

Funeral and Ambulance Service

AGENTS FOR MONUMENTS

Corner 5th Avenue and 2nd Street

PHONE

2214

Park J A res 379 Belfast St	3867
Parker C L res 228 Belfast St	3288
Parker P res 406 2nd St	3582
Parker Capt W res 62 2nd St NE	3732
Parkes H O res 67 9th St	2391
Parrish V W res 309 2nd St SW	2612
Parsons J H res 516 3rd St	2220

PATTERSON DR J R Phys & Surg 816 2nd St	3627
Patterson M E res 340 Aberdeen St	2771
Patterson W J H res 352 9th St SE	2224
Patterson's Dairy Misses Patterson 524a 4th Av	3302
Pattison C W res 469 2nd St	3314

PATTISON FUNERAL HOME Funeral & Ambulance Service Cor 5th Ave & 2nd St 2214	
Patton F A res 415 Cambridge St	2924
Patton H S res 423 Cambridge St	2772
Patton Harold J res 530a 6th Ave	3328
Pauling G F res 44 4th St SW	3393
Peasley Chas E res 364 8th St	3449

PEDERSON DANIEL General Trucking 76 9th St NE	3923
Perrin E F res 356 7th St	2448
Perrin Mrs L res 837 4th Ave	2532
Perry Sam res 927 Balmoral St	3406
Pettit J M Service Station 1st St & 6th Ave	3070
Pettit J M res 274 7th St	3085
Phillips Miss Alison P res 380 12th St	2626
Phillips S res 64 8th St SE	3350
Pickering G res 43 Aberdeen St	3779
Pickles M W res 121 2nd Ave	2323
Piegl Paul res 307 Aberdeen St	3410

PINGLE DRUG CO Store No. 1 627 2nd St SE	2006
Percy Yeo Mgr res 355 Belfast St	3013
Pingle G W Agency 4 Hull Blk	2666
Pingle G W res 806 1st St SE	3313

PINGLE OPTICAL PARLORS 627 2nd St SE	2006
Pittard E P res 250 5th St	3988
Plewes George V res 963 Braemar St	3042
Plotkin's Quality Grocery 523 Allowance Ave	3550
Point Auto Service Allowance & N Railway St	3455
Pollitt N T res 303 3rd St SW	2506
Popplewell W A res 836A 3rd St	2646

PORTER C B Garage Maple Ave & 2nd St SE	2498
Porter C B res 61 9th St NE	3956
Porter's Machine Shop 690 S Railway St	3127
Posey G L res 485 12th St	3889
Powles C W res 558 Dundee St	2643
Pozzi L res 20 Diana Court	3155
Poyser James F res 245 4th St SE	3540
Pratt R B res 838 4th St	3185

PROVINCIAL GOVERNMENT

COURT HOUSE BUILDING	
Clerk of the Court's Office	2778
Sheriff's Office	2451
School Inspector	2547
Clinic Children's Welfare	3362
Issuer of Marriage Licences	2778
Judge's Room	3868
Lawyer's Room	3711
District Engineer F B Connors	3170
Material Yard and Warehouse	3150
Automobile Licences Miss Hughes	2644
Municipal Affairs W D Wylie	3477
Municipal Affairs P C Hepburn	2773
S A B Agriculturist Thos Kilduff	3560
Treasury Branch Office 657 2nd St	3326
Pudwell Lydia Ladies' Hairdresser 332 5th St	3445
Pushie W J res 776 3rd St S	3749
Pyyde Mrs A res Porter's Hill	3312

Q

Quail J A res 6 Diana Court	3508
Quaill J J res 53 1st St SW	2036
QUEEN STREET GROCERY 976 Queen St	2998
Quesnelle J H res 867a 2nd St	2537
Quinlan G H res 404 Belfast St	2709
Quinlan W C res 47 4th St SE	3639

R

Rae A E A W res 12 8th St NE	2908
RAE HARDWARE 629 3rd St	2918
Rae W M res 462 4th St	3757
Read P res 426 11th St	2325
Ready T V res 329 1st St SE	2678
Reburn R J res Library Bldg	2032
Red Cross Headquarters 13 Post Office Bldg	3048
Red Head Service Station 699 7th Ave	2919
Reed—see also Reid	
Reesor W C res 245 8th St	3379
Regent Billiard Room The 2nd St SE	3675
Reilly—see also Riley	
Reilly E res 1104 Allowance Ave	2455
Reilly-Kent Agency The Customs Brokers 528 2nd St SE	3553
Reliable Western Cartage 722 2nd St SE	3303
Reppnack John res 1119 7th Ave	2972

REVELSTOKE SAWMILL CO LTD	
East Allowance	2153
L F Chrestenson Mgr res 43 9th St	2375
Rex Cafe Kwong Lee 431 N Railway St	3236
Richardson A res 125 8th St	3504
Richardson B B res 238 4th St W	2198
Richardson C W res 121 1st St SW	3086
Richardson Harold res 327 3rd St SW	3936

RICHARDSON'S BAKERY 720 4th St 3233	
B B Richardson res	2198
H B Richardson res	3936
Riches P L F res 17 1st St	2913

**Directory
Advertising Pays**

Seventy Seven Oil Company

DUBBS CRACKED

DAN CURRIE, Local Manager — WE ACCEPT TREASURY VOUCHERS
3177 SOUTH RAILWAY STREET 3177

Riley—see also Reilly		Scott T E res 854a Braemar St	2225
Riley W res 146 2nd St NW	3094	Scragg Wg Comdr C res 244a Aberdeen St	3898
Rimmer Oswald A res Allowance Ave	2367	Select Beauty Salon The 640 2nd St	2545
RITCHIE BEAUTY SHOP Olive Ritchie		Sept George G res 55 9th St	2676
217 6th Ave	2923	SERVICE HARDWARE 624 3rd St	2076
Roach—see also Roche		P E Volway Mgr res	3304
Roach A J res 322 12th St	3887	Seventy-Seven Oil Co S Railway St	3177
Roberts George res 19 View Court	3922	Sexton J res 46 7th St NE	2072
Robertson John res 685 7th Ave	2007	SHAMROCK BOTTLING WORKS	
Robertson R M res 441 Cambridge St	3669	Park Drive	2533
Robertson T res 716 11th St	3715	Shannon Gordon res Dunmore Rd	3008
ROBERTSON'S TRANSPORT	3635	Sharp Mrs N res 551b Princess Ave	2633
R Ayling Mgr 239 N Railway St	3636	Sharp W J res 441 3rd St NW	3769
Robinson Mrs Elizabeth res 143 11th St	3515	Sharpe F C res 219 5th St	2696
Robinson James res 111 1st St SW	3482	Shaw Mrs A res 38 4th St NE	2244
Robinson James W res 176 3rd St NE	2311	Shepherd R F Aucr & Sec Hd Furn 657 3rd St	2705
Robinson Dr John L res 147 10th St N	3389	Shepherd R F res 341 3rd St SE	3766
Roche—see also Roach		Shore & Co Clothing Store 415 N Railway St	2528
Roche Mrs C M H res 219 1st St	3415	Shore M res 803a 4th St	3908
Roosa Mrs P res 738 Braemar St	3188	Short S Barrister Dominion Bank Bldg	3531
Rose G H res 54 4th St SE	3168	Short S res 141 4th St SW	3272
Rose Mrs W A res 537-B Maple Ave	3765	Silver's Store Ladies' Ready to Wear 656 3rd St	2413
Ross Flt Lt T D res 406 Prospect Drive	3674	Simmons G A res 162 7th St	3612
Roth R W res 225 2nd Ave N	2909	Simmons G E res 368 Belfast St	3133
ROXBURGH MULLIGAN & ROSE		Simpson P M res 1124 Dominion St	2756
Barrs & Solrs Royal Bank Chambers	2404	SIMPSON THE ROBERT WESTERN	
G H Rose res	3168	LTD Order Office 532 2nd St	2020
Roxburgh Mrs W G res 315 Belfast St	2215	Sinclair E R res 322 4th St W	3279
Roxburgh W N res 55 2nd St SE	3276	Sinclair Mrs James res 143 3rd Ave	3798
Roxy Theatre 317 6th Ave	2339	Sinclair S L res 123 1st St NW	3595
ROYAL BANK OF CANADA		Singer Sewing Machine Co A L Jenkins 639 2 St	2613
R H A Lacey Mgr 3rd St SE	2477	Sissons Herbert J res 363 Cambridge St	3090
Royal Billiard Room 222 S Railway St	2403	Slack Dr A E res 134 3rd St SW	2962
Royal Canadian Mounted Police 375 1st St	2658	Slack Dr Edwin A res 118 5th St SW	3962
ROYAL HOTEL A Cantalini Mgr		SLACK SLACK & FLETCHER DRs	
S Railway St	2177	Dentists 569 2nd St	2433
Royal Service Station 3rd St	2333	Slater A res 265 6th St	2703
Russell E H res 52 1st St SW	3117	Slater Mrs Peter B res 816a 4th St	3083
Russell Sqn Ldr R H res 514c Princess Ave	2286	Slater Mrs W res 5 1st St SE	3408
Rutherford A W res 512 Belfast St	3115	Slemko J H res 221 11th St	3646
Rutherford W R res 544 Aberdeen St	2767	SLEMKO'S TIRE SERVICE 324 6th	
		Ave SE	3882
S		Slous Adj Wm res 719 6th St	3808
Sadler R res 153 9th St N	3902	Smeaton A M res 60 9th St N	2986
Sadler Mrs S R res 360 11th St	3428	Smeland Marvin res 970 4th St	2570
St Therese Academy 7th St NE	3992	Smith A E res 277 5th St	3919
Sammon L P res 871 5th St	2334	Smith Dr Allison Dentist 25-27 Huckvale Blk	3447
Samson T res 848 3rd St	3783	Smith Dr Allison res 284 6th St SE	2262
Sanders Walter V res 245 3rd St	3259	Smith Mrs L res 516 S Railway St	2405
SAVE-WAY CLEANERS & DYERS		Smith Merritt H res 375 2nd St SE	2035
411 N Railway St	3220	Smith Miss S res 525b 4th Ave	3604
SAVOY CAFE 2nd St	2133	Snack Spot 646 3rd St	2606
Scarlett F H res 49 8th St	3125	Snappy Tailors H E Jordan 664 2nd St	3226
Scarlett Taxi 645 3rd St	3333	Snell H B res 36 8th St N	3102
Schmid E res 121 7th St	3101	Sodero P M res 421 8th St	3063
Schneider Henry H Auctioneer 328 S Railway St	2203	Solley S F res 844-A 4th St SE	2439
Schneider Henry H res 830 Balmoral St	2204	SOUCH B F Optical Parlors 562 2nd St	3020
School Divisions 4 & 5 Office Royal Bank Bldg	3316	Souch B F res 304 2nd St SE	2209
SCHOOLS		South Eastern Alberta Co-op Assn Ltd 325 6 Ave	3331
Medicine Hat School Board Office	3178	Spencer Mrs A A res 102 4th St SW	2476
Supt of Schools P L F Riches	2527	Spotswood M M res 16 Diana Court	3939
		Sprague S W res 336 8th St SE	3539
		Squance J R res 341 8th St	2947

Weston's Bread and Cake (Canada) Limited

Cor. 4th Street and 3rd Avenue S.W.

:: 2501 ::

Stansfeld N K res 111 11th St	2544
Star Meat & Grocery Store Cor Allowance Ave and Queen St	2043
Staysko A res 148 2nd Ave	2170
Steedman E R res 42 4th St	3840
Steele Mel A res 234 4th St	3075
Steeves Mrs M M res 545 Dundee St	2967
Stephen G A res 18 View Court	2284
Stevens Miss Joan res 824 11th St	3523
Stevens Mrs W B res 12 View Court	3061
Stewart H res 429 1st St SE	2211
Stewart R A res 349 Aberdeen St	2640
Stone Maurice H res 29 2nd St SW	2246
Stone Mrs P D res 11 4th St SE	3862
Strobel E G Apartments 769 3rd St	2287
Strobel E G Apartments 509a 6th Ave	2281
Sturgess F Taxi 738 4th St	2112
Sutherland Mrs A res 261 Aberdeen St	3786

T

Tai Kong Greenhouse Co Industrial Ave	3232
Taylor A C res 346 3rd St	3416
TAYLOR BROS Groceries Fruit etc 648 2nd St SE	2131 2151
Taylor C R res 233 2nd St	3244
Taylor D res 514d Woodman Ave	3297
Taylor S C res 225 1st St SW	3576
Taylor Thos J res 426 Prospect Drive	3033
TEEL'S MEAT MARKET 507a 4 Ave	2518
Terminal Cafe Greyhound Bus Depot 3rd St	2101
Terrill A J res 10 1st St SE	2663
Terry Len res 640 7th Ave	2376
Texas Co of Canada Ltd The—	

See McColl-Frontenac Oil Co Ltd

Thirlwell Tom res 427 7th St SE	3028
Thomas H A res 333 Aberdeen St	3151
Thompson Robert res 481 7th St	2961
Thompson T W H res 526 6th Ave	3642
Thomsen R M res 504 7th St	2279

THOMSEN'S CARTAGE & TRUCK

TERMINAL 727 2nd St	3131
R M Thomsen Mgr res	2279
Thomson J F res 110 8th St	2707
Tobin Mrs Mary res 514b 6th Ave	3339

TODD'S GROCERY 317 6th Ave	2531
Tom's News Stand T G Allan 620 3rd St	2270
Tom's Service Station T E Graham Allowance Ave	3231
Tombing A res 438 Cambridge St	3768
Tonkin F res 508c 5th Ave	2157
Toole E res Crescent View	3637
Top Hat Taxi 652 3rd St	3456
Torgerson Mrs Alma res 527 6th Ave	3118
Townsend E res 420 7th St	2623
Trans-Canada Air Lines Resv Agt 8 Aberdeen St	2732
Treece W M res 106 3rd St	2189
Trotman James L res 19 8th St	3364
Tucker Fit Lt A B res 214 4th St	3826
Tufford J D res 1226 3rd Ave	3654
Tufts R G res 415 Aberdeen St	3903

TURNER N Plumber & Gasfitter 466 11th

St	2445
Tyler T H res 823a 3rd St	3977

U

UNIVERSAL GARAGE P Piegl Prop S Railway St	3524
--	------

V

Vallis J R res 373 Aberdeen St	2065
Vaughan Chas J Decorating & Reprs 649 2nd St	3164
Veiner H res 542 9th St	3334
Volway P E res 138 7th St NE	3304

W

Wagstaff C res 227 Aberdeen St	2691
Wait N A res 137 1st St SW	3579
Walker G F res Dunmore Rd	2352
Wall J H res 239 2nd St SW	3166
Wallace Stewart A res 25 View Court	3263
Waller C C res 538 6th Ave	2948
Wallis Mrs J W res 144 8th St NE	3176
Wans S res 348 Aberdeen St	3724
Ward E res Fewings Apts 247 2nd St	2130
Ward J E res 250 Division Ave	2472

WARHAM'S CARTAGE 968 Braemar

St	2453
Watkin H res 412 Cambridge St	3745
Watson H H res 543 Cambridge St	3693
Watson O res 220 1st St SW	3076
Weaver R W res 330 8th St	3413
Weeks C D res 127 1st St SW	3159
Weiler S G res 823 4th St	3301
Weir W L Apartments 607 4th St	2784
Weiss Conrad res 958 Bridge St	3022
Wellband H K res 312 7th St	3443
Welling Mrs M res 433 10th St	3728

WESTERN CANADIAN GREYHOUND

LINES LTD J Briggs Agt 3rd St	2101
--	------

WESTERN MEAT MARKET Fish &

Meats 626 3rd St SE	2054
---------------------------	------

WESTON'S BREAD & CAKE

(CANADA) LTD 4 St & 3 Ave SW	2501
---	------

W M Treece Mgr res	2189
Westwood Mrs Geo res 820a Braemar St	2459
Wharton Robert J res 68 2nd St	2622
Wharton W J res 876 Braemar St	3243
White Mrs A M res 441 Belfast St	3273
White A T res 446 Cambridge St	3329
White Geo Esmonde res 521 10th St SE	2470
White Lee res 830a 5th St	2723
White Lunch 230 S Rly St	3993
White Norman A res 253 5th St	2774
White Percy res 276 1st St	3495
White S res 837 1st St	3107
White Sidney W res 53 Aberdeen St	3308
White Spot The 667 2nd St	2040
Whitehouse John H res 408 Aberdeen St	2149
Wickett H H res 37 1st St	2944
Wight P res 490 12th St SE	3472
Williams Esther Beauty Salon 831 2nd St	2071
Williams R W res 520 Aberdeen St	3245
Williams W A res 96 4th St SE	2458
Williams W H res 406 Dundee St	3911
Williamson James O res 317 1st St	2424
Willox Robert res 350 8th St	3327
Willson George res 445 9th St	3714

Wilson Miss E res 21 2nd St SW	3414
Wilson James res 813B 4th St	3114
Wilson Mrs Wm res 335 3rd St	2934
Windsor Agency The Insurance 740 2nd St	3182
Wintemute W S res 922 3rd St	2624
Wo Lee & Co Greenhouses 1st St N	2205
Wood C G res 218 2nd St SW	3174
Woollven Mrs F C res 825b 3rd St	2063
Woolworth F W Co Ltd Cor 3rd St & 6th Ave	2122
Worth R J res 320 12th St	2415
Wray W G res 154 2nd St NW	3286
Wright B W res 16 1st St SE	2256
Wright Cliff res 33 4th St	2258
Wright J W res 869a 2nd St	3834
Wyatt J H res 1008 Yuill St SE	2615
Wylie W D res 522 8th St	3987

Y

Y W C A 409 1st St SE	3964
Yeo Percy res 355 Belfast St	3013
Young E V res 106 5th St	2331
Young Richard A res 325 Belfast St	3097
Yuill Harry C res 442 1st St SE	2283
Yuill J H res Erin Lodge 473 1st St	2485
Yuill W C res 129 10th St NE	2494

Z

Zachary's Groceries & Confect 845 7th St SE	3143
Zehren Paul res 4 Montgomerie Apts	3566
Ziegler J A Red Head Service Stn 699 7th Ave	2919
Zorzi Fred res 729 12th St	3718

Medicine Hat Rural Subscribers

To obtain connection with these Rural Subscribers, dial 91
and ask Operator for number desired

Ajax Coal Co Ltd The	X210	Maple Leaf Milling Co Ltd	R511
Alberta Wheat Pool	R518	May W ..	R308
Aman A C	R313	McKinlay A P	R513
Burton Eugene	R706	Mitchell James	R403
Burton Eugene South Ranch	R509	Palmer W	X211
Cavan Henry	R512	Peter Arthur E	R309
Cavan R N	R510	Peter Harry A	R311
Choice Dairy The	X208	Provincial Government	
Hansen H K Fox Farm	X203	Dept of Lands & Mines Forest Service G R	
Heald E	R406	Ambrose Ranger	R312
Hedlund Dave	R505	Reade Frank	X214
Hillside Cemetery	X202	Roeder William Coal Mine	R322
Hope Bruce	X608	Seitz Jacob	R503
Kennard Percy	R305	Shock J J General Merchant	R310
Klaiber A	R502	Smith E E	R307
Koenig Dan	R115	Starks Mrs R E	R506
Kunderd Henry	R303	Weir J W S	R507
Kurpjuweit R H	R516	Woolfrey W A	X209
		Woolley Lloyd	R108
		Woolley Norman	R112

Are You Doing Your Share?

Make a comparison between what you are doing
and what the boy who is now Overseas sacrificed,

THEN

BUY MORE

War Savings Stamps and Certificates