

When People Work Together, Great Things Happen

PowerPoint slide notes produced by Simon Solutions, Inc.



Slide #1

We are thankful for the opportunity to share with you today. We bring you “good news.” Across the country, communities are discovering new and exciting ways to work together for common good and greater impact. The results are amazing!



Slide #2

Communities are learning how to advance innovative and promising approaches to address complex community challenges. These approaches are making a real and lasting difference in their communities.

These include:

- *Mutually Beneficial Networking* – sharing knowledge and information that benefits all the helping agencies in your community
- *Multi-Sector Collaboration* – working together to address complex community challenges
- *Comprehensive Empowerment* – a well-connected care network and continuum of care that helps individuals and families move from surviving to thriving

But first, let's look at some realities.



Slide #3

People are very concerned about the road ahead.

Many people are working hard but still cannot make ends meet.
Single-moms are struggling to provide income and take care of their families.
Parents are wondering about the quality of their children's education.
And, families are most concerned about affordable healthcare



Slide #4

Most helping agencies, across the country, struggle to maintain a constant flow of resources that sustain and advance their mission. Many agencies, with limited staff and volunteers, cannot keep pace with the increased demand for services which is forcing them to “do more, with less.” Also, people's needs are becoming more complex and beyond the scope of many agencies, which are not connected to a community-wide referral system.

Because of this, many children, youth, and adults go without access to effective programs and services that can help transform their lives.

When People Work Together, Great Things Happen

PowerPoint slide notes produced by Simon Solutions, Inc.



Slide #5

Many citizens believe that now is the time for neighbors, churches, charities, businesses, elected officials, and others to come together to make sense of the changes that impact our community, better understand people's needs, and implement long-term solutions through collective action.



Slide #6

Communities are learning how to **maximize** their collective caring power. They are working together to transform their *helping systems* – from a “social service” to a “social change” model. They are doing more than just help people **get by**. They are learning how to collectively help them **get ahead** to a better quality of life and brighter future.

Social Service Model

- Helping agencies are disconnected and don't talk to each other; fostering a fragmented and limited service delivery system.
- Fragmented service delivery causes wasteful duplication of services and efforts; resulting in a dysfunctional referral system that frustrates and discourages people.
- People see agency services as a short-term transactional process. “You need something. I've got it...maybe.”
- Services can be perceived as a *handout* or something just meant to help people *get by* for the moment.
- Helping agencies work in isolation (silos) and compete for the greatest amount of credibility and independent impact.

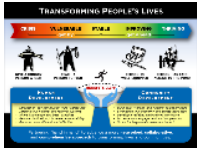
Social Change Model

- Helping agencies communicate and rely upon each other; fostering a well-connected and collaborative service delivery system.
- Well-connected service delivery streamlines coordinated efforts; creating a resourceful and effective referral system that encourages people and offers them hope.
- People see agency services as a long-term transformational process. “Let's make sure everyone is satisfied with the results”
- Services are designed to be a *hand up* – an opportunity for people to *get ahead* to a better quality of life and brighter future.
- Helping agencies work together more efficiently and effectively; co-creating evidenced-based solutions that drive collective impact.

A “social change” model offers communities the chance to make a real and lasting difference in people's lives. The results can be amazing: people are better served, agencies are better informed, and communities are better engaged.

When People Work Together, Great Things Happen

PowerPoint slide notes produced by Simon Solutions, Inc.



Slide #7

A “social change” model breathes new life into a community’s helping system by enabling all stakeholders to strengthen and maximize their collective caring power.

Communities are learning that no one person, organization, or government agency has all the information, skills, or resources necessary to address complex community challenges, let alone develop effective sustainable solutions. Many communities believe that now is the time for neighbors, churches, charities, businesses, elected officials, and others to come together to make sense of the changes that impact their community, better understand people’s needs, and implement long-term solutions through collective action.

Community leaders suggest that the way to move forward towards large-scale social change is for all community sectors to work together by engaging in strategic planning that supports innovation, invites broader civic participation, and allows collective impact to emerge. Their first action is to find innovative ways to increase communication and connectivity among all agencies. And, they must be able to broadly share best practices and make time to collaborate for the well-being of *everyone* in their communities.

Communities, that use Simon Solutions networking technology, soon realize that increased connectivity can help a “social change” model to emerge. Networking improves communication between agencies and streamlines information-sharing, which benefits everyone. Agencies make better-informed decisions as how to allocate limited resources where they are most needed. And, they can work together more efficiently and effectively to address complex challenges by reducing duplication, increasing resourcefulness, and broadening their impact.

A helping system that transforms into a “social change” model sets the stage for a more networked, collaborative, and comprehensive approach to transforming people’s lives. Agencies, along with the people they serve, gain greater access to knowledge and resources, from across the community, that support social and economic well-being. Any agency, or collectively with others, can now work closely with individuals and families – helping them to map-out a successful journey from crisis to sustainability. This journey includes a “holistic” action plan with practical goals, learning opportunities, and resources that are tailored to each person’s hopes and dreams.

A person’s ability to “work the plan” is measurable, using our technology. All assistance, referrals, and outcomes are monitored in real-time – making it easier for helping agencies to collectively track a person’s progress toward self-sustainability. And if needed, agencies can suggest adjustments to the plan. The goal is to make sure that people thrive; not just survive.



Slide #8

Our innovative tools provide you and your community with a better way to find and coordinate resources. *It's FASTER...*what once took days, can now happen in minutes. *It's EASIER...*you don't have to call around. Everything you need to know is right there on your PC or laptop, constantly updated in real-time. *It's BROADER...*you can now tap into an abundant, but often unrecognized, wealth of local community resources.

This is a wonderful opportunity to create the most caring, community-minded, and empowering “resource network” that your city, and its surrounding areas, have ever seen. A network that clearly demonstrates to residents and funding sources that your public, private, and social community sectors are working together for common good and greater impact.

And, you are doing this by aligning an abundant wealth of local knowledge, resources, and resolve to build stronger families, create vibrant healthy neighborhoods, and tackle tough community challenges with powerful collective action.

When People Work Together, Great Things Happen

PowerPoint slide notes produced by Simon Solutions, Inc.



Slide #9

People are better served

- *Stronger Safety Net* –we assist helping agencies, throughout the community, in creating a “well-connected” care network for emergency relief and long-term recovery. One that keeps individuals and families from falling through the cracks, and quickly connects them with the care they need.
- *Responsive Service Delivery* – we make it easier and faster for helping agencies to communicate with each other in real-time and quickly mobilize resources for people in need. Agencies, and people they serve, gain greater access to knowledge and resources, from across the entire community, which support social and economic well-being.
- *Continuum of Care* – we provide helping agencies with simple-to-use tools that advance a more caring, customized, and comprehensive approach to transforming people’s lives. These empowerment tools help guide and monitor people’s successful progress from crisis to sustainability.

Helping agencies are better informed

- *Informed Decision-making* – our HIPAA-driven, client management systems enable helping agencies to make better informed decisions for allocating limited resources where they are most needed. Our simple and customizable features also streamline intake, assessments, and referrals – all in real-time.
- *Reduced Duplication* – our networking tools track how people are being served by other agencies, making it easier for agencies to collectively coordinate appropriate assistance. This increases accountability and supports more efficient and effective ways to serve individuals and families that are facing hardship.
- *Increased Funding* – our solutions give donors and other funders peace of mind in knowing that the right resources are getting into the right hands, at the right time. In many communities, data-driven decision-making and collaboration have increased funding from local citizens, foundations, and government.

Communities are better engaged

- *Improved Cooperation* – all helping agencies (nonprofit, church, food bank, healthcare, and government) are better able to work together for common good and greater outcomes. Communities are more aware and responsive to people’s needs and gaps in service that need attention.
- *Data-driven Collaboration* – we provide care networks with big data analysis systems that measure engagement and outcomes at individual, organizational, and community levels. Oftentimes, our systems have supported and advanced the work of multi-sector collaboratives that drive innovation, best practices, and sustainable solutions.
- *Collective Impact* – our solutions help “jump start” and support partnerships that strive to address complex community challenges. Communities can strengthen and mobilize their collective caring power by becoming more resourceful; using what they have, to create what they need.



Slide #10

End of presentation and possible time for questions or discussions.