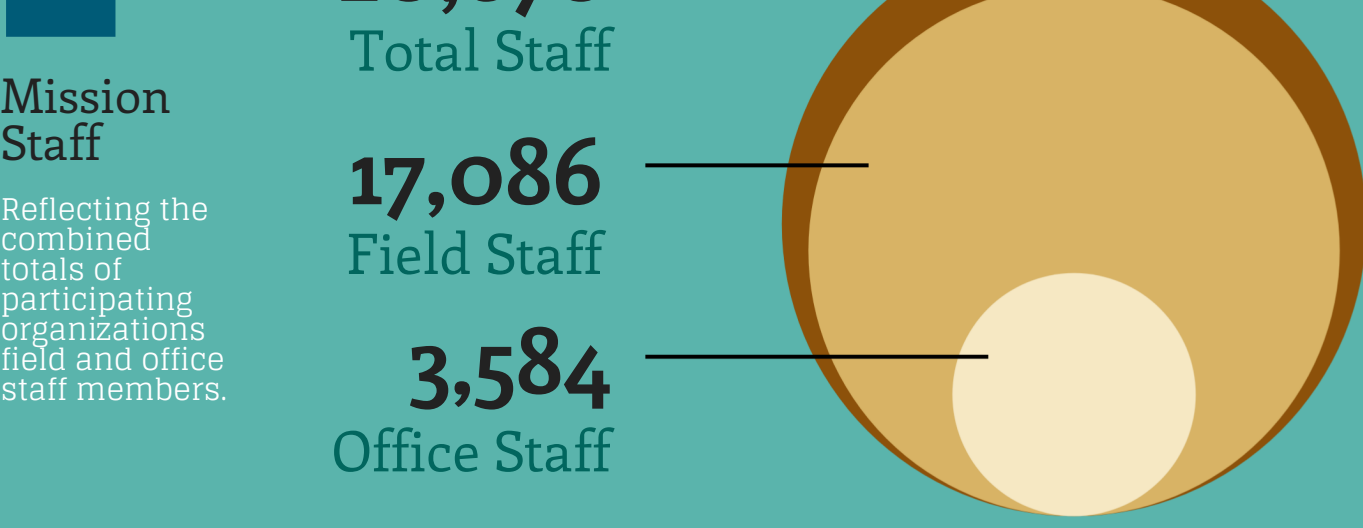
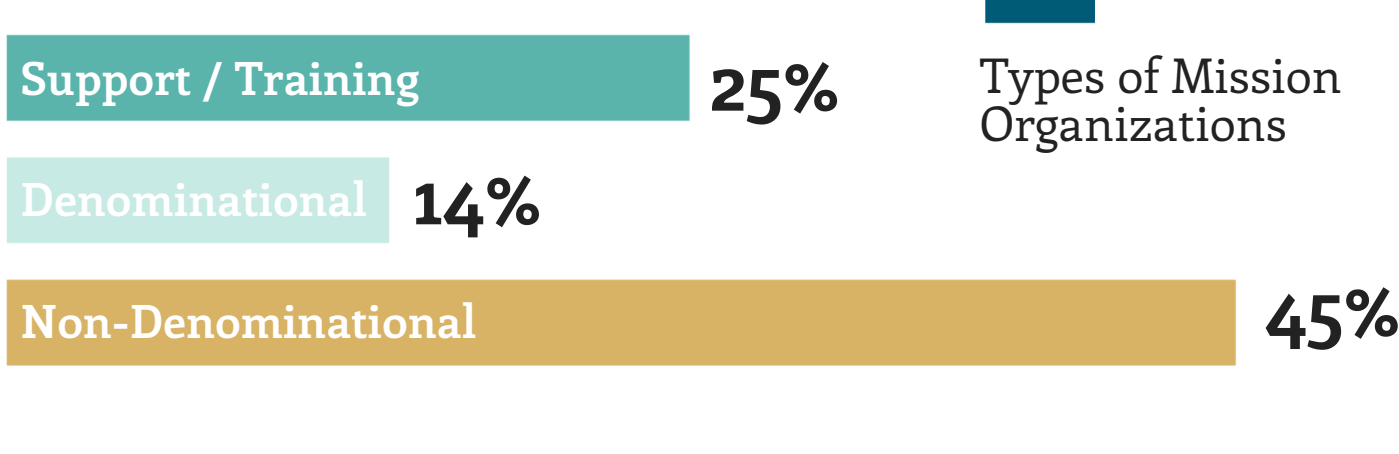




Mission CEOs Survey

Traversing the Global Landscape



#3 Personal Priorities

CEOs were asked to rank their top personal priorities and Christ-like leadership qualities.

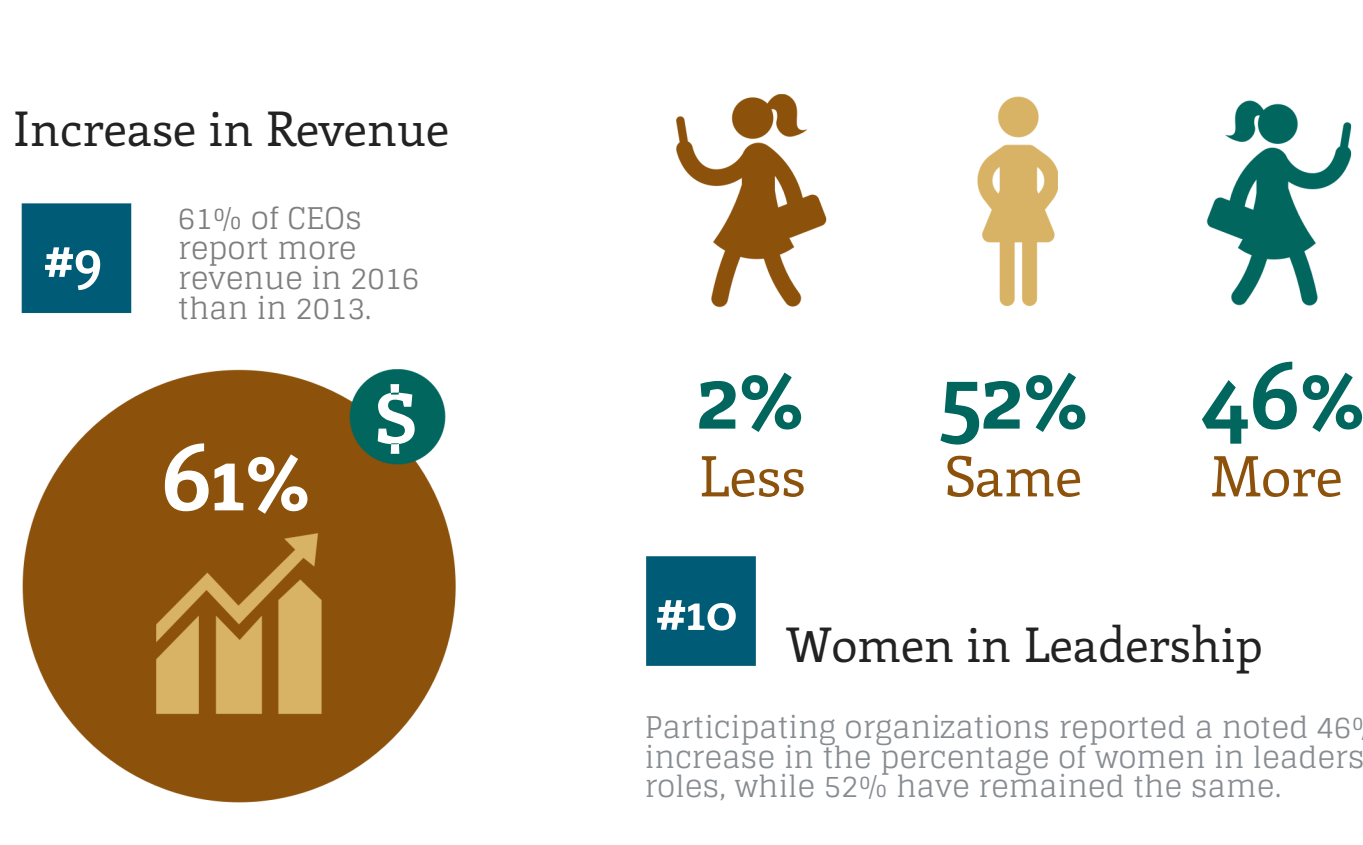


#6 When asked about their Organizational Priorities, CEOs felt they needed to prioritize attracting qualified staff, fundraising and developing partnerships to remain effective.

#7 Adaptability and ongoing staff development ranked highest among CEOs Staff Priorities.

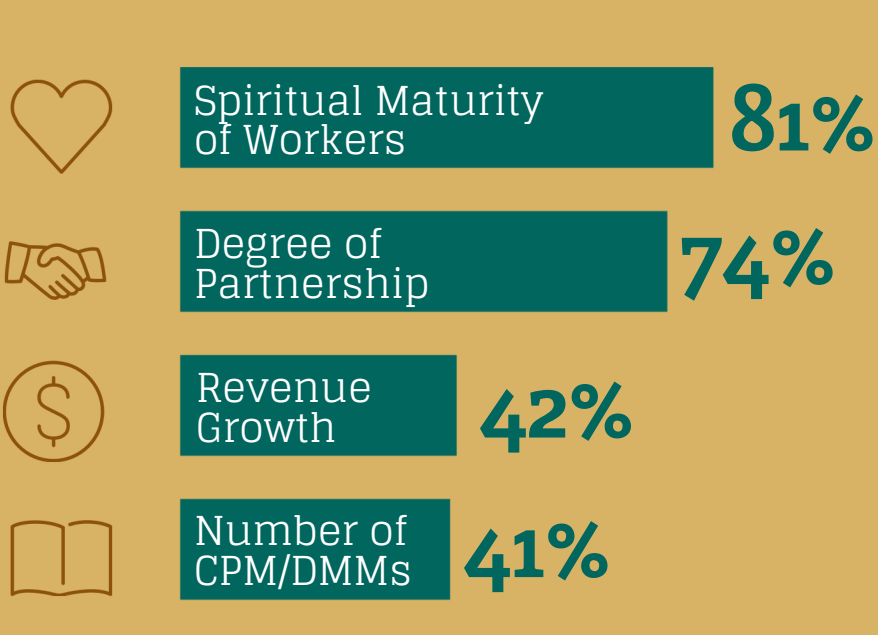


#8 An increase in field personnel is reported by 57% of CEOs, and more field ministry is reported by 75% of CEOs. 66% of CEOs report more active fields of ministry than in 2013.



#10 Women in Leadership

Participating organizations reported a noted 46% increase in the percentage of women in leadership roles, while 52% have remained the same.



#11 CEOs identified the markers which were most useful in effectively assessing organizational progress.

