

MRH

MODEL RAILROAD HOBBYIST

ALSO:

- Diode matrix control for turnouts
- More on modeling yard limits
- Modeling rocks with foam
- Tsunami2 sound loco install
- ... and more inside!

Geoff Bunza ...

Structure signs from photos

► READ NOW



Hard-coded wide PDF version of MRH magazine

The facing pages in this PDF have been merged into a single wide page, making them landscape.

Windows - Mac - Linux: Use the keyboard arrow keys to change pages
Tablet or phone: Swipe from the page edge to change pages





ALL ABOARD FOR FUN!



ATLAS
MODEL RAILROAD CO. INC.

TRAINKIDS

GLOW IN THE DARK
PASSENGER TRAIN SET

Item #15 000 100

#15 000 100
Trainkids Glow in the Dark
Passenger Train Set

- Powered Locomotive and First Class Battery Car
- 2 Passenger Cars and Unpowered Locomotive
- 38" x 56" oval incl. 12 Pieces of Curved & 4 Pieces of Straight Track
- Remote Control operated
- Headlight, horn, bell & "Welcome Aboard" announcement

NEW GLOW IN THE DARK TRAINSETS & ACCESSORIES



The NEW Magic Rerailer (#15 000 110) makes it easy for little hands to get their trains back on track!




Our separate sale left (15 000 108) and right (15 000 109) switches are available individually as well as in the #15 000 107 switch set.

CHECK OUT THESE FUN PRODUCTS & MORE!

CLICK HERE!

FOR MORE INFORMATION OR TO LOCATE A DEALER, PLEASE VISIT SHOP.ATLASRR.COM.
ATLAS MODEL RAILROAD CO., INC. • 378 Florence Ave., Hillside, NJ 07205

STAFF

HAVING FUN WITH TRAINS

MRH

MODEL RAILROAD HOBBYIST

Model Railroad Hobbyist | September 2025 | #187

Editorial Staff



Joe D. Fugate, Publisher and Editor



James Regier, Assistant Editor



Patty Fugate, Pasteup and Layout



Richard Bale, News and events



Jeff Shultz, News and events, Tech Assistant



Mike Dodd, Copy Editing

Get more issues like this

GIVE IT A LIKE



ISSN 2152-7423

1.2 September 17

Advertising



Les Halmos, Account Manager



Jean-François Delisle, Marketing Assistant

Regular contributors

Eric Hansmann, Contributing editor
Jim Six, Limited Modeler column (RE)
Greg Baker, Limited Modeler column (RE)
Ken Patterson, Reporter-at-Large

Rotating Columnists (RE)

Al Daumann, Getting Real column
Jeff Johnston, Getting Real column
Mike Rose, Getting Real column
Jim Providenza, Getting Real column
Tony Thompson, Getting Real column

Published for the glory of God. [What's this?](#)



REGISTER
(free)

[INDEX](#)

[TABLE OF CONTENTS](#)

[MRHMAG.COM](#)

[INDEX](#)

[TABLE OF CONTENTS](#)

MRH SPONSORS



Model Railroad Hobbyist | September 2025

A - M



acculites.com



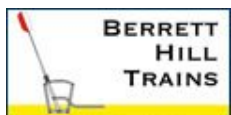
railroadhobbyshow.com



www.atlasrr.com



bachmanntrains.com



berretthill.com/trains



blairline.com



deluxematerials.co.uk



www.digitrax.com



esu.eu/en



handlaidtrack.com



iascaled.com



store.mrhmag.com



www.modelrectifier.com



handlaidtrack.com/mt-albert-scale-lumber

Vendors: Get your clickable logo on these pages ...

MRH SPONSORS | 2

N - Z



ncedcc.com



www.pwrs.ca/main.php



ohrtracksupply.com



oktrainshow.com



rapidotrains.com



ringengineering.com



rockislandhobby.com



ronsbooks.com



scaletrains.com



sodigi.com



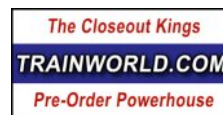
sbs4dcc.com



tamvalleydepot.com



new! tcsdcc.com



trainworld.com



walters.com

Looking for something? Check the MRH Marketplace!



Take me there!

What's new on TMTV

Some recent shining examples ...



Confused by Pan Pastels? We decode it all for you ...



TLC: Behind the scenes stories of George Sellios

Super-detailed deciduous trees

Qualmans' Michigan Lines layout

COMING SOON!

Watch now ...

Buy individual episodes or get unlimited access as a member



www.trainmasters.tv

Registered MRH reader?

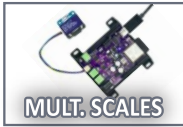
SAVE 10%
click here

TABLE OF CONTENTS | MRH

September 2025



Publisher's Musings: Shenware software update
JOE FUGATE



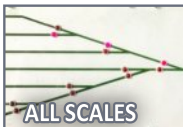
MRH Website this month: DCC-Ex command station, ...
Compiled by JOE FUGATE



Let's talk ops: Yard limits per the rule book, part 3
JOE FUGATE



What's Neat: George Bogatiuk Tsunami2 install, ...
KEN PATTERSON



Electrical Impulses: Diode matrix turnout control
ROSS HURLEY



How to model signs from old photographs
GEOFF BUNZA



JTC N scale Pullman Standard 60' container flat car
JEFF SHULTZ



Savvy Modeler online: Modeling rocks with foam
Compiled by the MRH STAFF



September 2025 news and events
RICHARD BALE and JEFF SHULTZ



JUST ANNOUNCED EMD GP40

N
1:160 SCALE



EMD GP40 Phase 1a3, Milwaukee Road/1960s-1970s Era

ARRIVING SPRING 2026

DCC & Sound Equipped Retail: \$324.99 **Our Price: \$259.99**
DC/DCC Ready Retail: \$193.99 **Our Price: \$154.99**



L&N



Rio Grande



**CLICK THIS AD TO SHOP FOR YOUR FAVORITE
ROADNAMES AND PAINT SCHEMES.**



**SCALE
TRAINS**

PREORDER NOW

© 2025 ScaleTrains, Fox Valley Models, railroad, road number, and era-specific details, and respective logos are trademarks of ScaleTrains.com, Inc.
Pricing is subject to change without notice. ScaleTrains models are made under trademark license from CSX, GE, and Union Pacific Railroad.



REGISTER
(free)

[INDEX](#)

[TABLE OF CONTENTS](#)

PUBLISHER'S MUSINGS



Model Railroad Hobbyist | September 2025

JOE FUGATE GIVES AN UPDATE ON THE
SHENWARE OPS SOFTWARE PACKAGE ...



IN MY FEBRUARY 2025 EDITORIAL, I WROTE ABOUT THE PASSING OF PETER WHITE, the creator of the wonderful Shenware OPs software. It's heartbreaking he's gone. Peter always wanted to do whatever he could to help his fellow modelers.

Concerned about Shenware's future, we contacted Peter's widow. We hoped to continue Peter's legacy with his software.

Peter's wife gave us all his software CDs, but they lack the source code, preventing us from fixing bugs. His laptop was reformatted and sold, so that's out.

The CDs also lack registration codes, complicating software unlocking. Luckily, we got the keys from Shenware buyers.

Our tests confirm the keys unlock the software for unlimited use. Without them, it offers a couple weeks of free use before requiring a key.

Testing versions 6, 7, and 8, we discovered version 8 has bugs we can't easily find and fix without the source code.

So we're offering version 7 as a free bonus from *MRH*, honoring Peter's widow's wish for it to be free.

[MRHMAG.COM](#)

[INDEX](#)

[TABLE OF CONTENTS](#)

PUBLISHER'S MUSINGS | 2

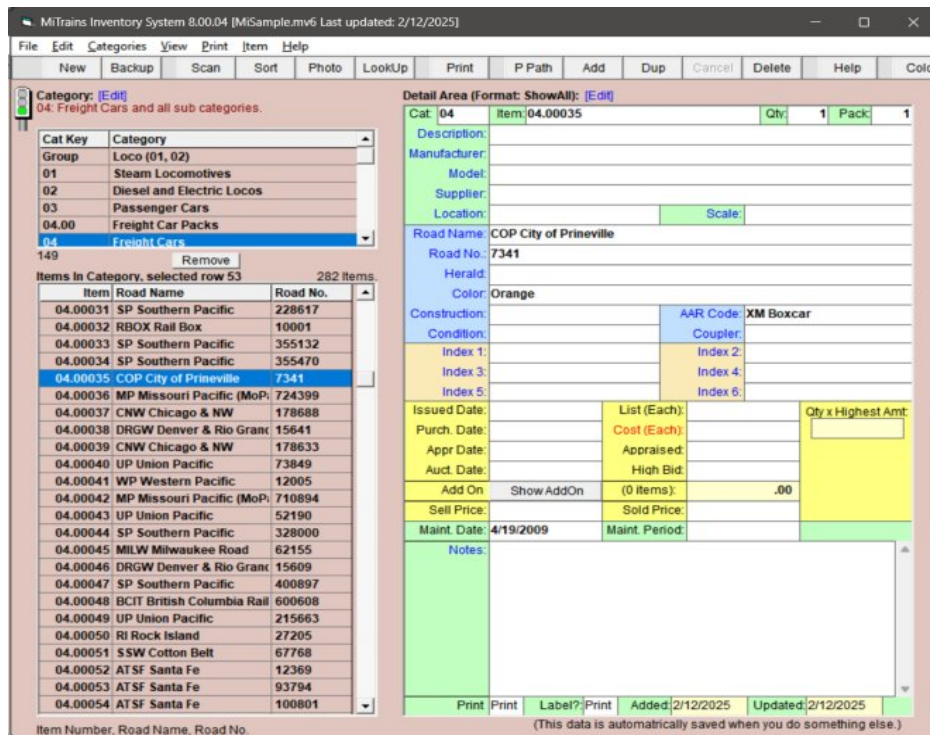
Getting a copy of Shenware version 7

To get Shenware version 7, register on the MRH forum and [access the bonus downloads for September](#). Registration is free and connects you to the *MRH* forum for support.

If you struggle with installation or registration, ask for help. *MRH* forum members can assist.

What's in Shenware 7

Download Shenware to get a zip file with the install program and a text file with registration keys. Unzip to find a folder titled Shenware.



1. MiTrains "inventory" main screen.

COLLECT. CONNECT. TRADE.

Introducing a new line of railroad-themed trading cards that combine the thrill of railfanning and the excitement of collecting. Featuring themed series, rare finds, and exclusive cards, it's more than a collection—it's a new way to enjoy the hobby.

TitansofSteel.com

**CLICK HERE FOR
MORE INFORMATION
OR TO PRE-ORDER**

WALTHERS® Support your local hobby shop • visit titansofsteel.com • call 1-800-487-2467

BACHMANN®

Return of the Berkshire

HO Scale 2-8-4 Berkshire & Kanawha Locomotives from Bachmann

The late-era Lima Locomotive Works 2-8-4 emerged during the Second World War as a poignant example of American steam at its finest. Designated the Berkshire as a nod to their predecessors, which were designed for use on Boston and Albany's Berkshire Mountains route, the type saw use across the East and upper Midwest. In the mountains of West Virginia, Chesapeake & Ohio® examples were given the moniker Kanawha in recognition of the Ohio River tributary of the same name. While their service life was short-lived due to advancements in diesel technology, the Berkshire has endured as a symbol of American steam power thanks to several examples in preservation. Nickel Plate Road #765 and Pere Marquette #1225, both featured in this run, have enjoyed long and varied excursion careers, with #765 taking part in Norfolk Southern's 21st Century Steam Program, while #1225 was used as the basis for the locomotive in a popular railroad-themed Christmas movie. Both locomotives remain fully restored and capable of mainline operation to this day, making the Berkshire the perfect choice for steam power, whether you're modeling their heyday or the present era.

Features include:

- Authentic Lima Locomotive Works design
- Soundtraxx® Econami™ Sound Value® equipped for sound, speed, direction, & lighting control
- Dual-mode NMRA-compliant DCC decoder
- Soundtraxx® Hyperdrive2™ Advanced Motor Control for refined low-speed operation
- Operating LED headlight and reverse light with Rule 17 operation or automatic direction control
- Precision motor with brass-machined flywheel
- Die-cast chassis with see-through frame
- Precision graphics, including legible builder's plates
- Prototype-specific details, including dome arrangement, headlight placement, and tender style
- Separately applied metal handrails and stanchions
- Detailed cab interior backhead
- Performs best on 22" radius curves or greater
- Magnetically operated E-Z Mate® Mark II couplers on the front and rear



NICKEL PLATE ROAD #765
(Railfan version)
Item No. 52401



PERE MARQUETTE #1225
Item No. 52403



NICKEL PLATE ROAD #759
Item No. 52404



CHESAPEAKE & OHIO® #2705
(Kanawha configuration)
Item No. 52405



Scan the QR code
with your mobile device
to find out more

Click to
learn more



BACHMANN INDUSTRIES, INC.

1400 East Erie Avenue, Philadelphia, PA 19124 USA

www.bachmanntrains.com

Bachmann Trains is a registered trademark of Bachmann Industries, Inc.

Click for more information.

Did you know ...

MRH registered members

SAVE 10%

... on the MRH Store & on TrainMasters TV?

Click to get 10% off coupon code

(Must be a registered member to access)

Not MRH registered member?

BECOME
A registered member
(It's FREE)

PUBLISHER'S MUSINGS | 3

Inside the folder you'll find two files:
SetupShenwareCD.exe and **shenware-registration-keys.txt**.

Double-click the Setup file to start the installation. Choose which components to install. We recommend at least **MiTrains** and **Waybills**.

The package also includes tools like a fast clock and scale converter. Feel free to install these too. If they're not useful, you can remove them later.

MiTrains

MiTrains is your complete inventory management system for all your model railroad items [1]. It lets you efficiently catalog and track everything – from locomotives to structures.

Tracking locos and rolling stock is quite useful. You can record the item type, manufacturer, maintenance history, as well as other handy details.

With a comprehensive equipment database, managing your hobby collection becomes easy.

A standout feature of MiTrains is printing car cards for your equipment. These cards track individual cars and their status on the layout.

During operating sessions, car cards travel with each car, showing essential info like car ID and type, and include a pocket for waybills to route the car.

Waybills

The Waybills program complements MiTrains, featuring a database of North American industries and their commodities.



2. Here are some car cards printed from the MiTrains software on heavy manila paper. Note the pocket for holding the waybills. I also like to stamp the card back with the car maintenance dates – very handy.

NORTH AMERICAN RAILCAR CORPORATION



National Steel Car 5431 cu ft 3 Bay Hopper

“Grain Car Of The Future”

NARC has a long history of working with National Steel Car (NSC) in the research & development of our model railroad products.

The new cars can load 100 metric tons (tonnes) compared to old cars, which are limited to 90 tonnes. A tonne is about 10% heavier than a U.S. ton. The new cars are also shorter, allowing more cars per train (up from a typical length of 112 cars to at least 134 cars). These changes in efficiency will completely change the economics of grain distribution and transportation in Western Canada.

You may also notice the new car looks like a stretched version of our 4300 cu ft Potash car. See illustration here.












100
TRADITIONAL-
STYLE TRAINS

= 75
NEW-STYLE
TRAIN

each train having
112 cars

each train having
134 cars

and each car loaded with
90 tonnes of cargo

and each car loaded with
100 tonnes of cargo

NORTH AMERICAN RAILCAR CORPORATION



Nutrien (POTX) - National Steel Car Potash Service 4300 cu.ft. 3 Bay Covered Hopper

48 road numbers, available exclusively at:




Agrium | PotashCorp before... after **Nutrien**

Merger Completed Forming Nutrien, a Leader in Global Agriculture

SASKATOON, Jan. 2, 2018 /CNW/ - Nutrien Ltd. (Nutrien) (TSX and NYSE: NTR) today announced the successful completion of the merger of equals between Agrium Inc. (Agrium) and Potash Corporation of Saskatchewan Inc. (PotashCorp), creating the world's premier provider of crop inputs and services. Nutrien has the largest crop nutrient production portfolio combined with an unparalleled global distribution network that includes more than 1,500 farm retail centers. With nearly 20,000 employees - and operations and investments in 14 countries - the company is committed to providing products and services that help growers optimize crop yields and their returns.

Feeding the Future™

**NEW
ADVERTISER!**

OkTrain & Show

NEW DATE!

November 15-16, 2025

Sat. Nov 15, 9 am-5 pm | Sun. Nov. 16, 10 am-4 pm

NEW 100,000 sq. ft. LOCATION!

Bennett Event Center

Oklahoma State Fairgrounds

3101 Gordon Cooper Blvd

With model trains, railroad memorabilia, operating train displays, vendors, exhibitors, manufacturers, clinics, giveaways and more!



**MORE INFO/TICKETS AT
OKCTRAINSHOW.COM**

When talking to
hobby vendors,
please remember
to mention MRH.

PUBLISHER'S MUSINGS | 5

Waybills map out each car card's journey, serving as itineraries for your train cars. They fit into pockets on the car cards.

Waybills help build realistic routes. You specify industry spots for deliveries or pickups, mimicking real railroad operations.

You can customize industry and commodity lists to match your layout. Pairing waybills with car cards lets you build trains and route cars with purpose, like real railroads.

I keep hundreds of pre-printed waybills organized by car type. When routing a car, I simply flip through the waybills and grab one with the desired routing.

This method makes it easy to get any car moving. Just slip the waybill into the car card pocket, and you're done.

For software to streamline your operating session paperwork, [grab your free copy of the Shenware app from the bonus downloads.](#)

FAST TRACKS

Build your own trackwork easily, quickly, and affordably.

TRACK BUILDING SYSTEM



"I am a die-hard hand laying railroad track aficionado with many years experience. I decided to try the Fast Tracks systems for my most recent Sn3 railroad. I was quite frankly astounded that I had not done this before. - Michael M."



Over 5,000 unique products.

• Easy ordering •

shop online 24/7 • handlaidtrack.com

1-888-252-3895 service@fast-tracks.net



REGISTER
(free)

[INDEX](#)

[TABLE OF CONTENTS](#)

MRHMAG.COM

[INDEX](#)

[TABLE OF CONTENTS](#)

The new *Who's who* in the hobby sampler

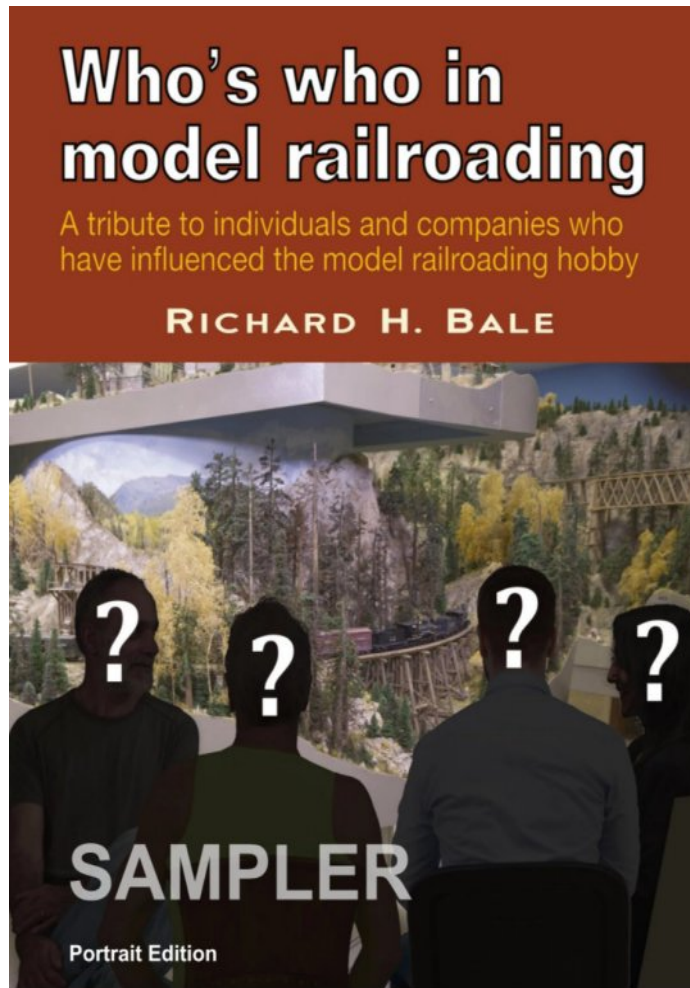
You may have seen ads for the new *Who's Who in the model railroading* book by our news editor, Richard Bale.

Curious about its contents and worth? We've put together this sampler for modelers like you.

Most readers find it surprisingly entertaining and eye-opening. Richard Bale, active in the hobby since the 1960s, worked with legends featured in the book – folks like John Allen, Whit Towers, and Cliff Grandt.

We're thrilled Richard shared his experiences and compiled this history of our hobby for future generations.

The book has



2.To read a free sample of our new *Who's who* in model railroading book: [click here](#).

HO SCALE

Capture a Piece of *History*

Classic Vintage Passenger Cars

Available in the Following Road Names:

- Pennsylvania Railroad
- AT&S
- Union Pacific
- Baltimore & Ohio

PRODUCT HIGHLIGHTS

- Coach & Combine
- Finely detailed printing
- Bachmann knuckle couplers
- Perfect for a display siding or a tourist line
- Ready to use

MSRP \$23.98

Visit our website to check out our entire line of Rock Island Hobby products:
www.rockislandhobby.com

RIH
Rock Island Hobby

BULK CROSS TIES

5,000 AND 10,000 QUANTITIES

10% and 15% discount

MT. ALBERT PRODUCT LINE IS NOW AVAILABLE ONLINE!

Specializing in manufacturing fine scale lumber for model makers.

shop online 24/7 handlaidtrack.com
service@fast-tracks.net

RETRO REBUILDS

GP9U AND SW SLUG

HO SCALE



- First ever accurate GP9u and Slug in plastic — often imitated, never exact!
- Long service lives, 1980s+, all throughout Canada and the US




ESU LOKSOUND EST 1985 Mo+Power

RAPIDO TRAINS INC.

CLICK HERE

All 3D CAD renders and artwork are subject to revisions before final production. GP9U photo courtesy of Rob Pisci. SW Slug photo courtesy of Dave Minihall.

All locomotives feature the MoPower capacitor for uninterrupted DCC power. Suggested minimum radius: 18".

RAPIDO

fascinating stories that highlight our hobby's evolution both in terms of the leading modelers and the hobby firms that helped shape it over the years. ✓

One important note: Someone mentioned getting a free Who's Who eBook copy from a friend. This violates our copyright and is illegal. We price our digital books and videos affordably, and these sales fund future projects. Piracy harms the entire community by reducing the number of titles we can publish.

I dislike addressing this, but we must periodically remind our fellow modelers to respect our copyright. Thanks for understanding.

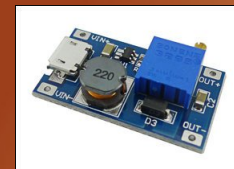
Get more articles like this

GIVE IT A LIKE



Did you see this article?

in the **SEPTEMBER 2025 MRH RUNNING EXTRA!**



Accessory power supplies for under \$5

Get full eBook now ▶

← click here



Each eBook has 75-100 pages

RUNNING EXTRA

Get the latest Model Railroading News, Tips, Reviews & Opinions

**CHECK
IT OUT!**



Our iTunes feed has changed search for
"Crew Call with Mike Rose" to receive the latest episodes!

www.themodelrailroadpodcast.com

Host:
Mike Rose: www.mrhobby.com

Don't Miss our Monthly Interviews
& Product Announcements



LAST ISSUE LIKES

Most liked articles in [August 2025 issue](#) of MRH are:

- 1st** Building a scenery practice module
- 2nd** Electrical Impulses: LED locomotive lighting
- 3rd** Let's talk ops: All about yard limits: 2

Most liked articles in [August 2025 issue](#) of *Running Extra* ...

- 1st** Modeling a Northampton and Bath boxcar
- 2nd** Limited Modeler: How TOMA pays dividends
- 3rd** DIY 3D Printing Overview – FDM

If you want more of this type article, then like the article!
Click the *Give us a like* or *comments* button on each article
and press the like button on the article's forum page if you
want to see more articles like these. ■

Every little bit helps!

Registered MRH readers
get **another** 10% off with
the coupon code here:

**Reveal my
coupon code
now!**

[click here](#)

That's right, on top of our other
sales and discounts, use this coupon
code to get **YET ANOTHER 10% off!**



TMTV sale offers

[click here](#)



MRH Store sale offers

[click here](#)

In



RUNNING EXTRA

September issue ...



All meat: zero ads!

TABLE OF CONTENTS | RUNNING EXTRA

Issue 82: September 2025



Publisher's Welcome: Accessory power supply for under \$5

JOE FUGATE



Limited Modeler: Ballasting track with a purpose

GREG BAKER



Getting Real: Modeling SP automobile cars

TONY THOMPSON



Shortline tailor-made for modelers

JIM ROBB



Introduction to model railroad operations

STEVE GILLET



Ah-Hah Moment: More needle applicator goodies

JOE FUGATE

Buy September eBook - \$2.99
95 pages

store.mrhmag.com

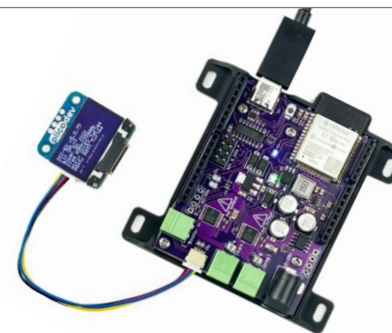
Also includes
134-page MRH
in the back!

Best of the MRH FORUM



Model Railroad Hobbyist | September 2025

Compiled by **JOE FUGATE**



DCC-Ex command station system

MRH forum member **Watawna** (Gary A.), writes that he is intrigued with the DIY DCC-Ex command station as a way to get a DCC system for very affordable price. Depending on how much you do yourself, this approach could get you a feature-rich DCC command station for less than \$70.

See the full thread for a detailed discussion of the pros-and-cons of the DIY approaches to get a DCC-Ex system, as well as how to outfit it with some nice WiFi throttles..



View the full thread on the MRH website

► **MRH'S MONTHLY GREAT MODELER POSTS**



REGISTER
(free)

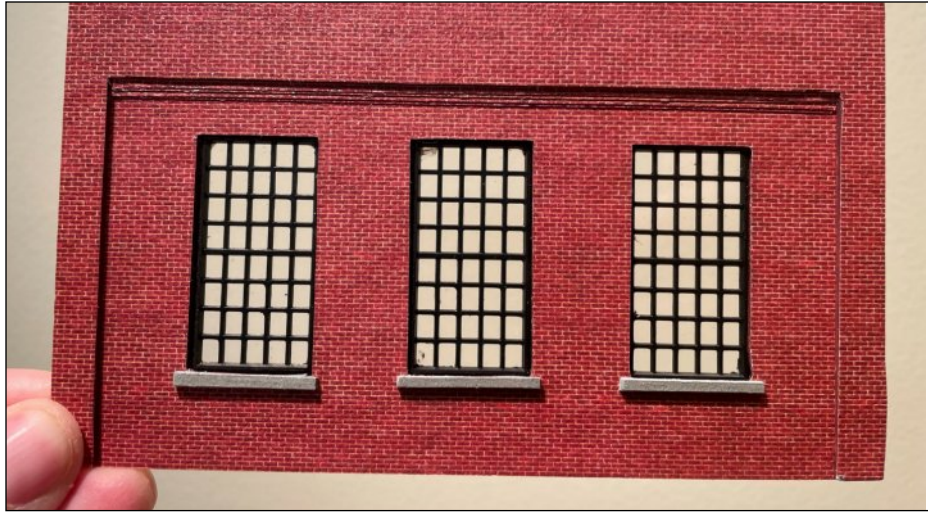
[INDEX](#)

[TABLE OF CONTENTS](#)

[MRHMAG.COM](#)

[INDEX](#)

[TABLE OF CONTENTS](#)



1. *MRH* forum member **porthos** (Kris M.) posted this photo of an a brick wall, asking how to make large brick buildings on a budget.

Modeling large brick buildings

MRH forum member **porthos** (Kris M.) says:

“I’m looking for methods, techniques and material to make large brick buildings. Commercial products are going to cost a small fortune. I’m not concerned with windows/doors or ornamentation at this point, just how to create large brick walls. The buildings I want to model were built between 1890 and 1920 and most have been converted to other uses now.”

Forum members provided Kris with many great suggestions on brick building construction materials and techniques. Check out this thread for some *very* useful suggestions.

[View the full thread on the MRH website](#)

ADVERTISEMENT

Lasercut structures. Highway, storefront and billboard signs.

Neat ag customer for your railroad:
Farmers Fertilizer Supply



WHAT'S NEW?

Established 1993...

Blair Line

ADVERTISEMENT

TRAINWORLD
SINCE 1968

THE CLOSEOUT KINGS!
PRE-ORDER POWERHOUSE!

TRAINWORLD.COM
orders@trainworld.com 1-800-541-7010

ADVERTISEMENT

ROADMASTER TRACK

NEW ADVERTISER!

RAIL FLOW SYSTEMS
FLOW INTO BETTER TRACKWORK
www.ohrtracksupply.com

When talking to hobby vendors, please remember to mention MRH.



2. MRH forum member **gna** (Gary A.) is looking for a source of tender trucks – something like the nice selection of Bowser tender trucks shown here.

Looking for tender trucks?

MRH forum member **gna** (Gary A.) asked what people are using for tender trucks. Preferably, Gary would like tender trucks that pick up from both rails. He mentions that he could also use other metal trucks in some cases, and just retrofit them with wheel pickups.

To see the many suggestions forum members have made to Gary, have a look at the full thread!

[View the full thread on the MRH website](#)

Recent build thread with nice model photos

Rather than pull images from the MRH forum Photo Fun thread as usual, this month, a module build thread had some great model photos.

[View entire module build thread](#)

3. MRH forum member **James Willmus** says, “A friend and I decided to challenge ourselves by building a diorama for our own modeling projects based on one of three ‘bridges’ (more like culverts) located east of Aberdeen, SD.”



4. Forum member **James Willmus** said, “I took the photo module out for a test drive with my cell phone and I think the results are quite good. Used a couple of Ken Patterson’s tricks, only I’m on the high plains instead of meandering river country.” ☑



Yard Limits: the Rule 93 rabbit hole

For the last two months, Joe Fugate has discussed yard limits, a hot topic on model railroads. Joe asked me to guest write this next column. While Joe provided some bullet points on Rule 93, let's look at the rule book itself.

I like the "Condensed Code of Operating Rules"¹, designed for model railroads and based on the actual railroad "Consolidated Code of Operating Rules."

RULE 93: Yard limits will be indicated by yard limit signs and in the timetable or by train order. Within yard limits, the main track may be used, clearing first class trains when due to leave the last station where times are shown. Protection against second and third class trains, extra trains, and engines is not required.

In Non-ABS [signal] territory, in case of failure to clear the time of first class trains, protection must be provided as explained by Rule 99.

Second and third class trains, extra trains, and engines must move within yard limits at restricted speed unless the main track is known to be clear.

Now, before your eyes start to glaze over, Rule 93 need not be hard to understand. Rather than trying to explain it all myself, I'll share insights from *Model Railroader's* Andy Sperandio, a passionate model railroad operator (sadly, Andy passed away in 2015).

From Andy's "The Operators" column (Feb 2007² and Oct 2013³):

"Main tracks, not yards. The first point to understand about Rule 93 is

LET'S TALK ABOUT OPS | 2



1. Yard limits isn't just for yards. Any location such as this on Andy Keeney's Nashville Road where you want to trains to work without requiring mainline track approval from dispatch is a candidate for the yard limit designation.

that it applies on the main line and not in the yard. Yards fall into the general category of side tracks, where the rules for mainline train movements don't apply. It doesn't take a special rule to allow for movement as needed in yards. What 93 does is to relax the restrictions on mainline movement over part of the main track ..."

"At stations where a railroad assigns a local switcher, it may establish yard limits to allow the switching crew to work on the main track without requiring special authority from the dispatcher. Sometimes entire branch lines may be designated as within yard limits. At stations where helpers are added to or cut out of trains, yard limits may be established to let engines move on the main as required."

"There's no more reason for us to invent our own operating rules and procedures than there is for us to design our own steam or diesel locomotives. If we want our operations to reflect the prototype roads, it's easier to learn and follow their rules."

Steve Gust and Rick Kang created a great PowerPoint, hosted by the Pacific Coast Region of the NMRA, that simplifies the topic with practical examples: [All About Yard Limits PDF](#)

Notice Rule 93 sneaks in another rule: Rule 99, flag protection. And yes, there are model railroads that use paper cutouts or figures of flagmen to protect their trains. ☑



¹ Copyright 1996, 2009-2020 by Steve P. Karas and Robert Hanmer. Copies can be ordered at <https://mrhmag.com/url/condensed-code-of-operating-rules>

² <https://www.trains.com/mrr/magazine/archive-access/model-railroader-february-2007/>

³ <https://www.trains.com/mrr/magazine/archive-access/model-railroader-october-2013/>

Make it run like a

Dream ROLLING STOCK

102 pages

By Joe Fugate

AUTUMN
SPECIAL



TOPICS INCLUDE: Setting standards • Building a test track • Wheelset/truck issues • Coupler issues • Carbody issues • Car weight considerations • Better maintenance procedures • Performance diagnosis & debugging • Special considerations

Click me to
Get eBook NOW >>
~~\$14.99~~ \$9.99

Format: Landscape and Portrait
PDF

Other books in this series: TRACKWORK (available now) and LOCOS (Fall 2025)

Click me to
ORDER PAPERBACK >>
~~\$31.99~~ \$27.77

FREE shipping in US!
Foreign shipping 50%

WHAT'S NEAT

column



Model Railroad Hobbyist | September 2025

KEN PATTERSON COVERS THIS
MONTH:

VIEW READER
COMMENTS

- EMD GP35s IN HO FROM BLI
- BACHMANN 2025 MID-YEAR ANNOUNCEMENTS
- GEORGE BOGATIUUK UPGRADES THE ATLAS MP15DC



WHAT'S NEAT with Ken Patterson
Tsunami2 install by George Bogatiuk

click to play video

PHOTOS AND VIDEO OF SUPERB MODELS

REGISTER
(free)

[INDEX](#)

[TABLE OF CONTENTS](#)

[MRHMAG.COM](#)

[INDEX](#)

[TABLE OF CONTENTS](#)

FOR THE SEPTEMBER “WHAT’S NEAT,” Ken shows new HO scale GP35 locomotives from Broadway Limited and talks about Bachmann’s 2025 mid-year announcements with Tyler Haney and Matt Stern. George Bogatiuk upgrades a pair of HO scale Atlas MP15AC locomotives from the original QSI decoders to SoundTraxx Tsunami2 decoders with Scale Sound Systems speakers and rooftop beacons.

Broadway Limited’s GP35 in HO scale



1. Ken enjoyed photographing this BLI Norfolk Western GP35 locomotive in natural sunlight in his backyard.



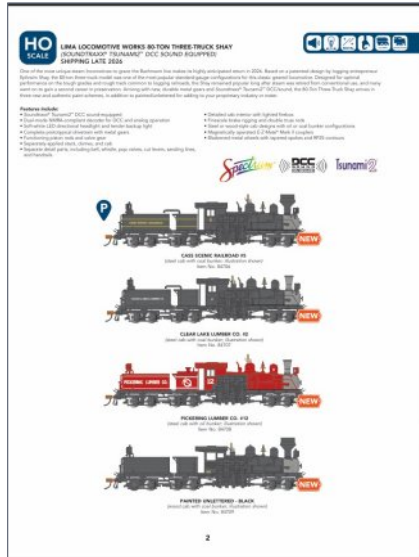
2. He's also been photographing the low-short-hood version of the GP35 decorated for the Reading Lines.

Info: broadway-limited.com

Bachmann’s 2025 mid-year announcements



3. Bachmann’s Tyler Haney and Matt Stern join Ken via the internet to go over many of the new announcements that Bachmann made at the National Train Show in Novi, MI. To start, a new American Freedom Train set, limited to a production of 1,000, will be released next year. Additional Freedom Train cars also will be available. The GS-4’s paint scheme will be updated for closer accuracy to the original.



4. The 80-ton 3-truck Shay, a replica of the Cass Scenic Railroad #5, will be back featuring metal gears. In addition to the Cass, the locomotive will be decorated for Clear Lake Lumber, Pickering Lumber, and painted but unlettered. The model will be equipped with Tsunami2 sound.



5. In N Scale, Bachmann is releasing new Amfleet I cars with lighting in the Phase VII paint scheme. All of these products will be available sometime in 2026.

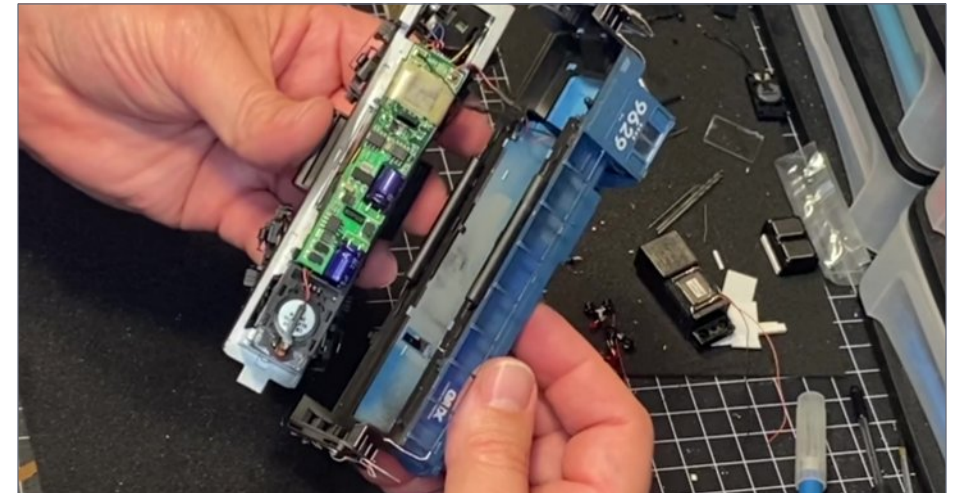
Info: shop.bachmanntrains.com

Info: resources.bachmanntrains.com/2025MidYear

George Bogatiuk upgrades two Atlas MP15AC locomotives



6. Ken sent George Bogatiuk two Atlas MP15AC locomotives that were equipped with non-functioning factory-installed sound, requesting that George update them with Tsunami2 sound and some additional lighting.



7. The original factory-installed sound decoder and speaker took up a lot of the space in the model's shell.



REGISTER
(free)

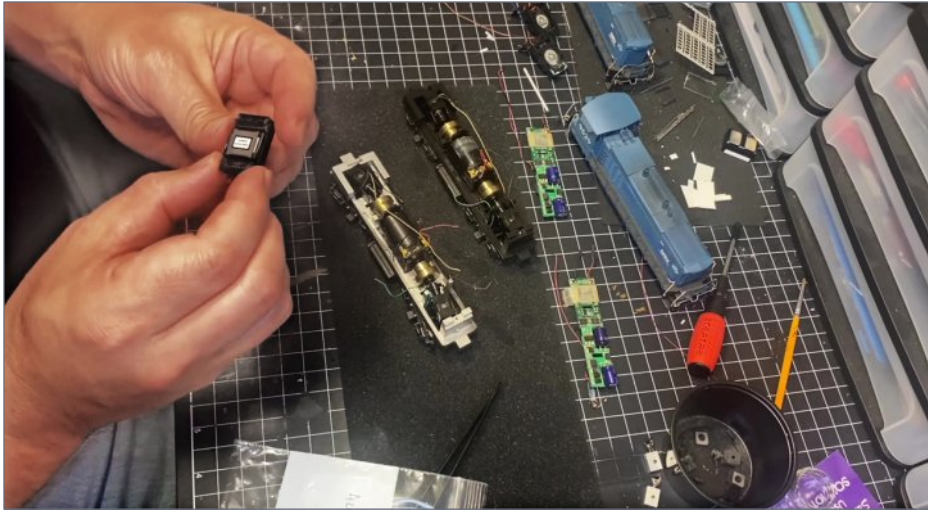
[INDEX](#)

[TABLE OF CONTENTS](#)

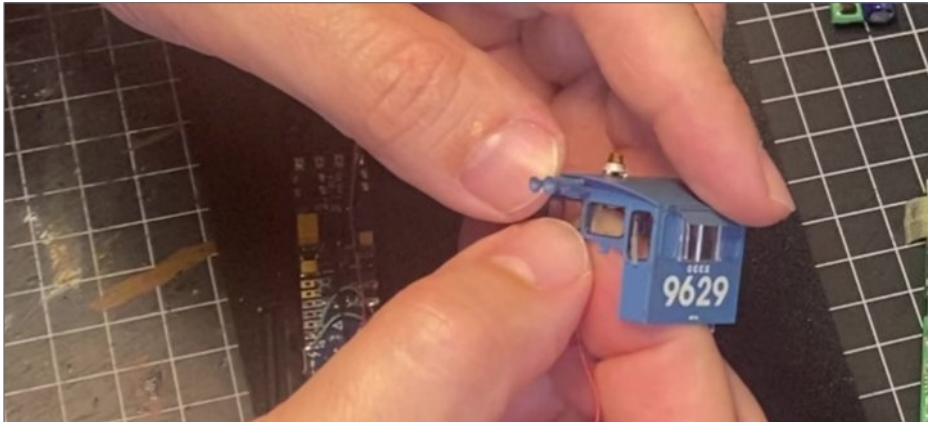
MRHMAG.COM

[INDEX](#)

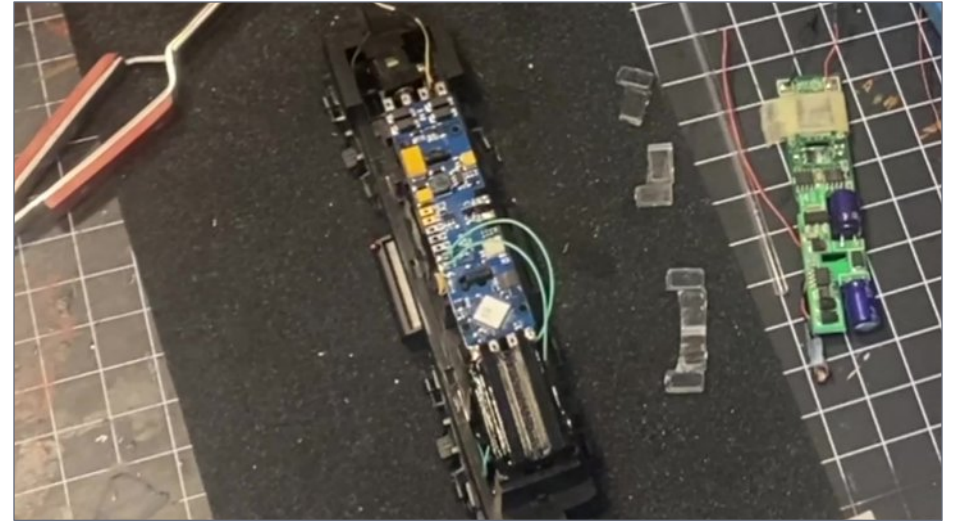
[TABLE OF CONTENTS](#)



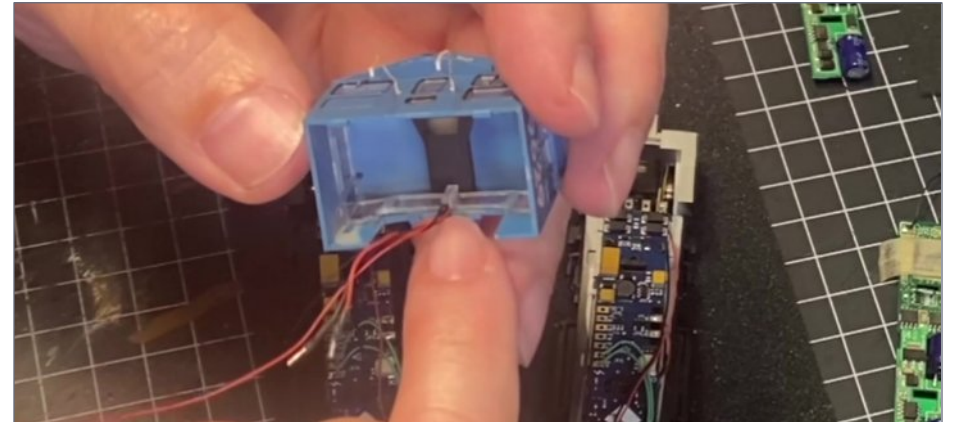
8. Having removed the original decoders and speakers from both models, George prepares to install Scale Sound Systems speakers. The speakers come with 3D-printed enclosures that are designed to mount in the particular locomotive without any modifications to the frame or shell.



9. After gluing in the speakers with Microscale Micro Kristal Klear, George set them aside to dry, disassembling the bodies to get access to the inside of the cab. He then drilled a #61 hole in the cab roof and mounted a rotary beacon.



10. Returning to the locomotive chassis, after soldering on the motor and track wires, the new Tsunami2 decoder snaps into the original mount. George then soldered the speaker wires to the decoder.



11. The wires for the lights in the cab, including the new rotary beacon, are hidden in a slot in the front windows that is behind a pillar. George shows how he gets all the wires in place and reassembles the cab and shell.



12. With the locomotives reassembled, George takes them out to the layout for testing and programming, where he programs the rotary beacon to look like a rotary beacon. He also programs the address, prime mover, and horn sounds.

Info: soundtraxx.com

Info: scalesoundsystems.com

Click on the video link at the beginning of the article to see the full video, with more views of the BLI GP35 locomotives, George Bogatiuk's complete sound and lighting upgrade, and more of Bachmann's mid-year announcements - like the De-Witt Clinton, Siemens SC42-DM dual mode locomotive, Siemens S70/S700US light-rail vehicle, new Thomas products, and several other new and updated products. ☑

Get more articles like this

GIVE IT A LIKE



REGISTER
(free)

[INDEX](#)

[TABLE OF CONTENTS](#)

Who's who in model railroading

A tribute to individuals and companies who have influenced the model railroading hobby

RICHARD H. BALE



Charlie Getz, past president of the National Model Railroading Association ...

"Richard Bale's monumental *Who's Who* should appeal to anyone who cares and is curious about the hobby and its history. There is an amazing amount of information about many pioneers who shaped and created the hobby of scale model railroading we enjoy today. Even if you do not think you need to know about them, you will be fascinated by the stories and connections of these individuals and the products and features we know and use. This book is a monument to some truly great people who are responsible for what we have today."

Photo of Ken Ehlers Pandora & San Miguel layout



MRHMAG.COM

[INDEX](#)

[TABLE OF CONTENTS](#)

From first train set to railroad empire...

Our complete line of DCC products grows with you. Discover the fun!

- Designed and manufactured in the U.S.A.
- Preferred for ease of use and ergonomic design
- Unlimited scalability for any size model railroad
- Plug-and-play means more time running trains
- Great customer service and excellent support



Visit our new and improved web site for all your DCC needs!

- Get the latest new product announcements
- Watch our detailed how-to videos
- Browse the all-new Information Station
- Enjoy secure online sales, day or night!



See your dealer

Visit **ncedcc.com**





Locomotive Works

Limited Quantity! **Track Cleaning Vehicle Vacuum Cleaner** \$289.95



- Powerful vacuum keeps problematic lint and dust out of your wheels, axles, and running gear.
- TCS DCC decoder with Keep Alive®
- Every HO layout deserves one!

Extra Traction Tires
Sold Separately

Magnets

Vacuum



Extra Abrasive Pads Sold Separately

Purchase one today at tcsdcc.com

Watch Full Video

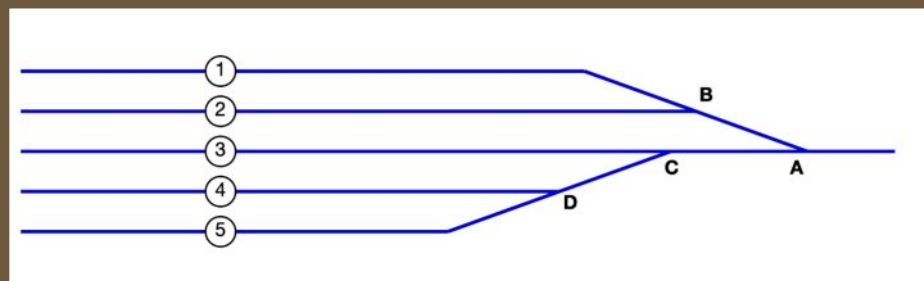


REGISTER
(free)

[INDEX](#)

[TABLE OF CONTENTS](#)

WIRING A DIODE MATRIX



1. Assume the circled numbers in circles in Diagram 1 are pushbuttons on a control panel. Pressing Button 4, for example, will throw Turnouts A, C and D together to align that route.



Electrical
Impulses

Model Railroad Hobbyist | September 2025



ROSS HURLEY SHOWS HOW TO WIRE DIODE MATRIX
ROUTE CONTROL FOR SOLENOID TURNOUTS ...

A DIODE MATRIX IS A METHOD OF WIRING A YARD with solenoid-powered switch machines so pressing a single button aligns the turnouts for the desired track [1]. This article shows to wire a diode matrix for yard turnouts.

Some modelers might have considered diode matrices before, but dismissed them as too complicated. I am an electrical novice, but found when I started wiring mine that it really is quite straightforward. You just have to follow two simple rules:

MRHMAG.COM

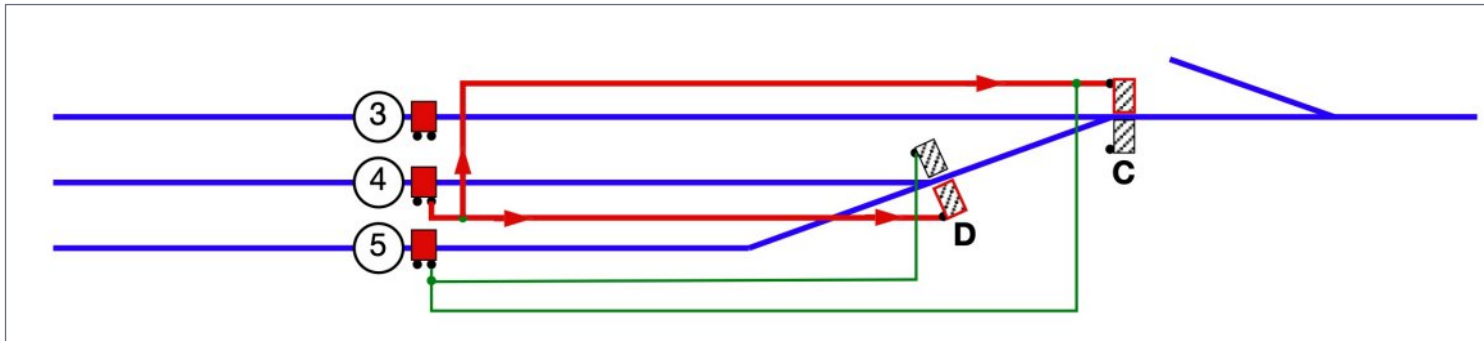
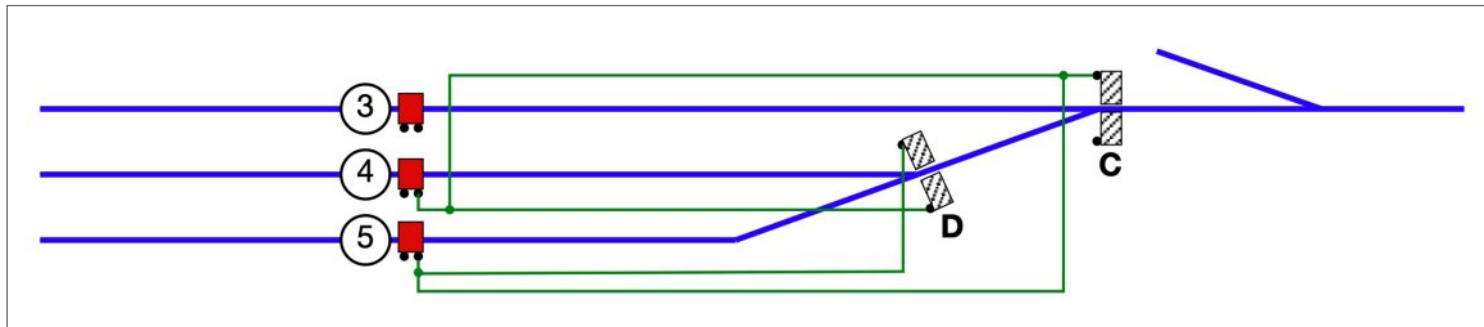
[INDEX](#)

[TABLE OF CONTENTS](#)

WIRING A DIODE MATRIX | 2

- Rule 1: Wire pushbuttons directly to the most “inboard” turnout (i.e., closest to the yard tracks).
- Rule 2: Run diode-fitted wires to each “downstream” turnout (farthest from the yard tracks).

The inboard turnouts are Turnout B and D in [1]. For Turnout D, the downstream turnouts are C and A.



WIRING A DIODE MATRIX | 3

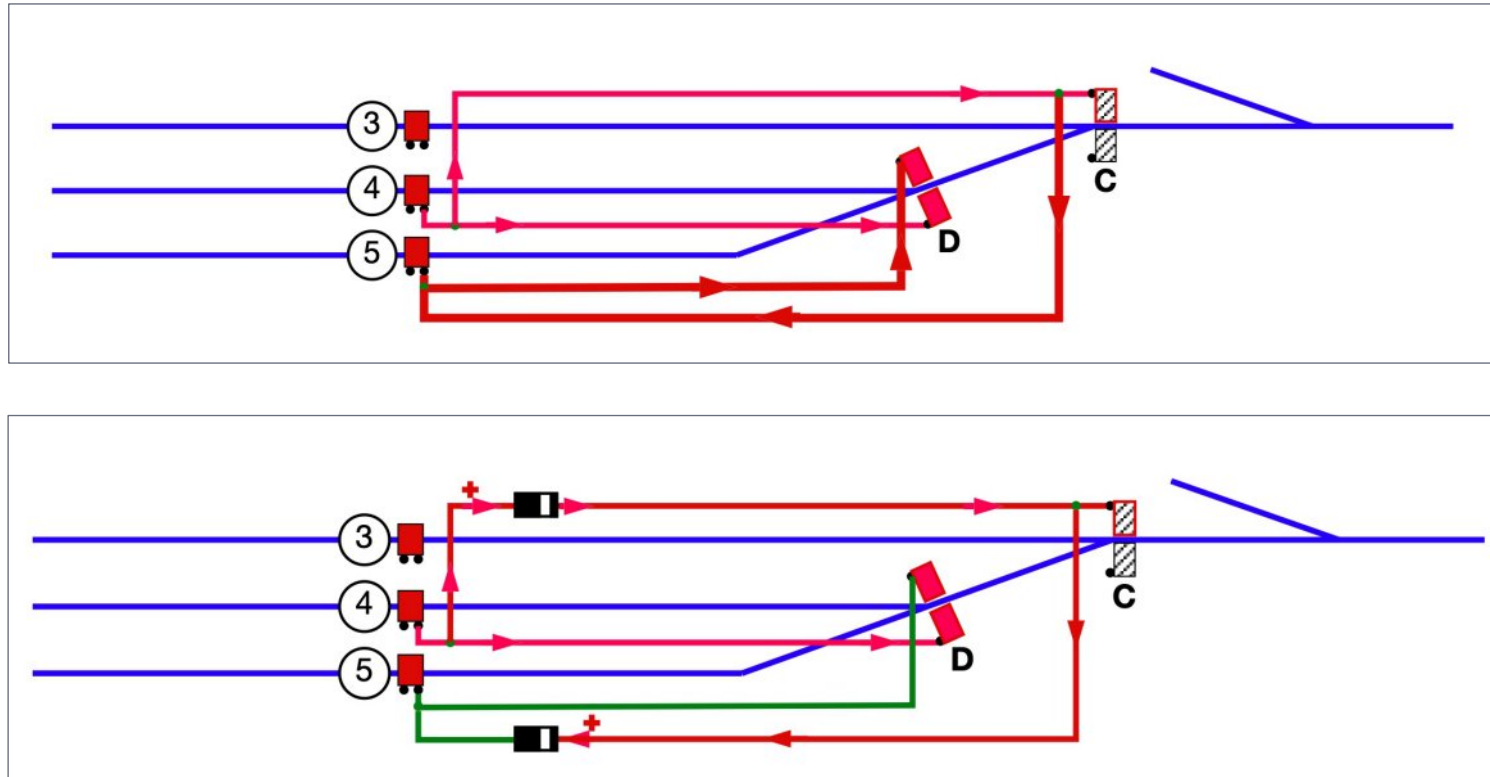
Why do we need diodes? Look at Diagrams [2, 3, and 4]. Notice the pushbuttons on Tracks 3, 4, and 5, and the solenoids of Turnouts D and C.

2. (Upper left) Let's say we want to set the route to Track 4. Following Rule 2, the button is wired directly to the solenoid of Turnout D that sets it to the diverging route. (I've omitted the return path to the power supply to make the diagram simpler.) Turnout C also needs switching to the diverging route from Button 4, so we wire that too.

3. (Middle left) To set up the route of Track 5, Turnout D needs setting to the Main so that wiring can be put in. But both Buttons 4 and 5 need to set Turnout C to the Diverging route, so here they are both wired to the same solenoid of Turnout C.

4. (Bottom left) Now see what happens when we push Button 4 to set the turnouts. The current flows to both turnouts D and C. So far, so good.

Diodes can fix this problem. Diodes are like one-way valves that allow current to flow only one way, positive to negative. We need to put a diode in the wires going to each downstream turnout, in this case Turnout C. Now see what happens to the current flow in Diagram [6].



That's the reason for Rule 2: wires to all downstream turnouts require a diode. Diagram [7] shows the wiring for a five-track yard.

5. (Upper left) But Button 5 is also wired to the Diverging-route solenoid of Turnout C, so current will flow unimpeded toward Button 5 and the Diverging-route solenoid of Turnout D. Both Main and Diverging solenoids of Turnout D will get power, and it will fail.

6. (Lower left) I've drawn the diodes as they look when you buy them, with a white band near the cathode (-). The current from Button 4 flows to the Diverging solenoid on Turnout D, and through the diode to the Diverging solenoid on Turnout C. Another diode prevents the current from continuing to Button 5 and the Main solenoid on Turnout D.

Please click on the ads to
support
Model Railroad Hobbyist!

Article continues on page 6 ...



STREAMLINED BACKSHOP

Your Virtual LCC & DCC Superstore!
SBS4DCC.COM



CHECK IT OUT ▶

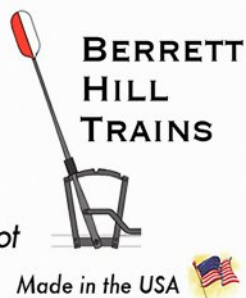
Great control in a tiny package

- Touch Toggle™ plug in controls
- Bright clear indication
- Easy setup
- Flexible system

**Original
Touch Toggles**

Stall Motors, Twin-coils,
Power, and Servos

Now for Tam Valley Depot
and MRservo too!



**BERRETT
HILL
TRAINS**

Made in the USA

What will they think of next?

www.berrethillshop.com



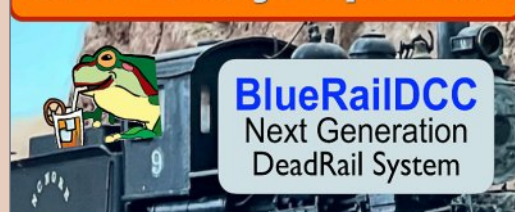
[INDEX](#)

[TABLE OF CONTENTS](#)



LEARN MORE

TamValleyDepot.com



Use the "Blunami" App from
BlueRail to control your DCC
locomotive decoder

True 2-way Bluetooth Radio
Read/write CVs
Monitor battery voltage

Available in 2A and 5A
HO to G

[Click for User Guide at BlueRail](#)

[Click to Order at TVD](#)



Control your Tortoises with DCC!



Dealer Inquiries Accepted

TORTOISE
switch machine
DCC decoder!



NEW!

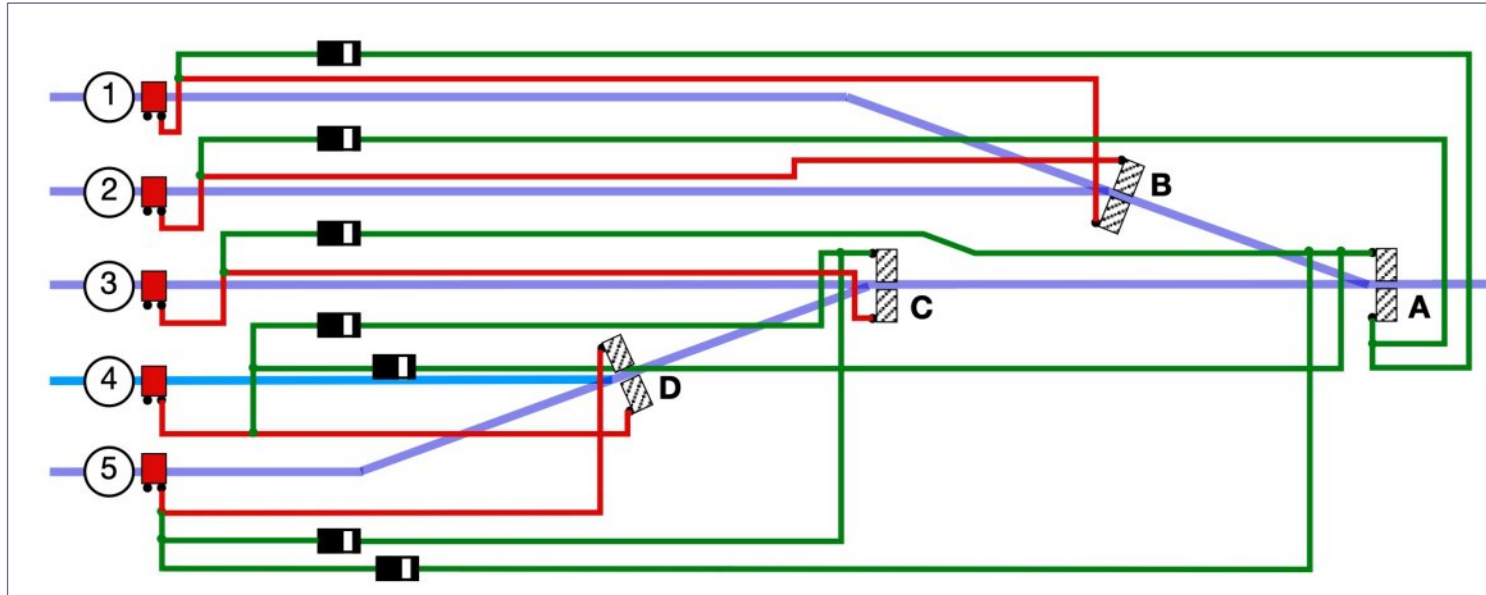
Tortoise DCC decoder ... easy to use and install! [CLICK TO LEARN MORE ...](#)

MRHMAG.COM

[INDEX](#)

[TABLE OF CONTENTS](#)

I'm using separate wires from the buttons to each downstream turnout. Each diode drops about 0.7 volts, so if the wiring to the downstream turnouts is daisy-chained, the ones at the end of the chain could suffer significant voltage drop as the current passes through multiple diodes. I'm using 1N4007 diodes [see the sidebar about electronic components. ed].



7. For a five-track yard, all the most inboard turnouts are wired directly to the buttons [red]. All the downstream turnouts are wired with diodes (green). The pushbuttons emit positive DC current.

Get more articles like this
GIVE IT A LIKE

**Did you know
 there's an MRH/
 RE index
 available?**

Click to find out more

Did you see this article?

in the **SEPTEMBER 2025 MRH RUNNING EXTRA!**



More needle
 applicator goodies

Get full eBook now ▶

← click
 here



Each eBook has 75-100 pages

**RUNNING
 EXTRA**

WIRING A DIODE MATRIX | 8

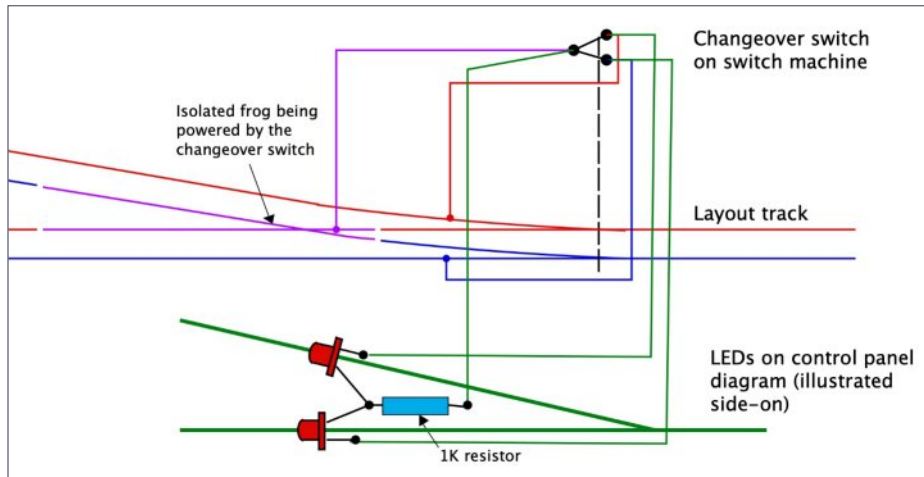
A diode matrix will likely require a capacitor discharge unit. A normal 12VDC power supply usually can't supply enough current to operate multiple solenoids at once.

Capacitor discharge units store power when idle, and, when a pushbutton is pressed to set a route, they discharge a surge of power to operate multiple solenoids. Commercial CDUs are available, or you could build your own.

LED CONTROL PANEL

If you are using DCC* you can have LEDs display just the route set. Most switch machines have only one set of changeover contacts. You can use it to both switch the frog and light the LEDs. The power routing of the turnouts will light only the LEDs in the powered route [8]. LEDs are meant to be used in a DC circuit, but work fine with the AC-like DCC power.

** This technique won't work with regular DC power. One of every pair of LEDs will light, and only when the DC throttle has been opened and the direction switch is feeding + and - power through the LEDs correctly. ☑*



8. This diagram shows how you can wire LEDs to light up to indicate set routes.

RailPro™
NEW
RE RING™
ENGINEERING

HC-3 and HC-3-SUN

Now with Four Real Buttons (Customizable) and Soft Grip Knob for the Ultimate in Train Control! + Much More!!!



- Lanyard Eye Ring
- Significantly Smaller Size**
- Significantly Lighter Weight**
- 2x Storage Memory**
- Better Battery Retention when Powered Off**
- Compatible with all Older RailPro Products!

** When Compared to Model HC-2

**US Patents 8,807,487
and 10,780,362
Copyright © 2024**

GET THE DETAILS ►



M. Dodd

NOTES ON ELECTRONIC COMPONENTS

Diodes

The author mentions using 1N4007 diodes in his matrix to control solenoid switch machines. The 1N400x family of diodes is rated to carry a current of 1 amp.

Depending on the type of solenoid switch machine used, it may draw more than 1 amp of current, which could ruin the diode.

To protect against this, I recommend using a diode rated for higher current, such as one from the 1N540x family (e.g., 1N5402), which is rated for 3 amps.

LEDs

Diagram [8] shows LEDs wired to DCC track voltage. Such a connection risks destroying the LED because DCC waveform is an **alternating** voltage with polarity changing back and forth.

LEDs have a specified maximum voltage that may be applied in the **reverse** polarity. This Peak inverse Voltage (PIV) typically is around 5 volts. DCC pulses typically are around 12 to 18 volts.

An LED will conduct current (and light up) with a DCC pulse in the “forward” polarity, but not with a pulse in the “reverse” polarity. Instead, that reverse voltage likely exceeds the LED’s PIV rating, and could destroy it.

My advice: **Always** power LEDs from a regular DC power supply. **Never** power them from DCC track voltage.

Article continues on page 10 ...



REGISTER
(free)

[INDEX](#)

[TABLE OF CONTENTS](#)



Southern Digital

WWW.SODIGI.COM

Celebrating 28 Years serving you

Some of the New Items from Digitrax



Zephyr Express
List \$245, Your Price \$196



Evolution Express DuplexRadio
List \$655, Your Price \$524



Evolution Express
List \$470, Your Price \$376



DT602D Radio Throttle
List \$270
Your Price \$216



UT6D Radio Utility Throttle
List \$180
Your Price \$144



DT602 Super Throttle
List \$200
Your Price \$160



UT6 Utility Throttle
List \$115
Your Price \$92



UR93 Duplex Receiver
List \$130
Your Price \$104



BD4N Block Detector
List \$37
Your Price \$29.60



BXPA1 Auto Reverser
List \$49
Your Price \$39



**Ni-MH Battery for
DT602 or UT6**
List \$13
Your Price \$10.40

DCC Conversions, Service & Support

E-mail: sales@sodigi.com (770) 929-1888

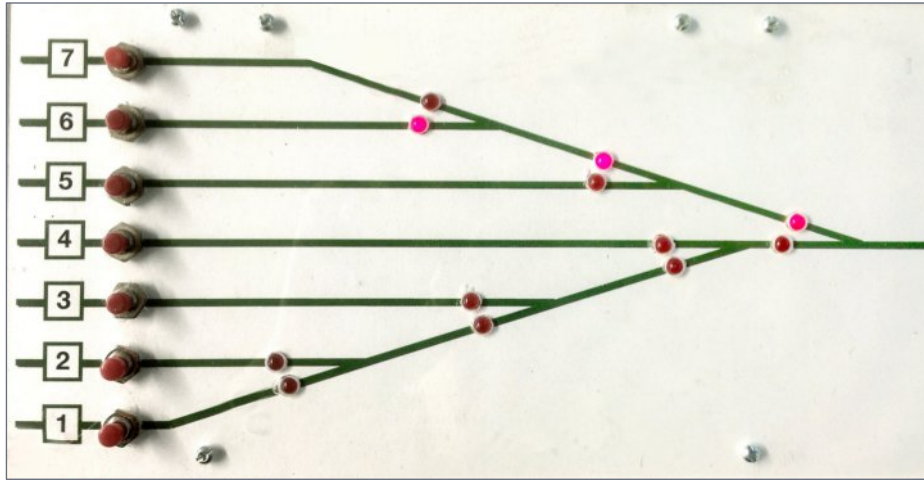


MRHMAG.COM

[INDEX](#)

[TABLE OF CONTENTS](#)

WIRING A DIODE MATRIX | 10



9. My push button control panel with LED route indicators. Here it is aligned for Track 6.

ROSS HURLEY



Ross has been a model railway enthusiast for over 60 years, living in Adelaide, South Australia. He models the local railway system, set in the 1920s, in P87 and using the prototype's 5'-3" track gauge. He scratchbuilds or casts most of his models.

His layout is fully scenicked but also operational, based on 1920s timetables and using rolling stock cards and removeable waybills.

He is an organizer for an annual model railway convention that has been held in Adelaide for the past 27 years, preparing the articles for the 200-odd page packet of notes that are handed to attendees on arrival. It provides detailed articles on all presentations they will see that day. Ross is also a past editor of the *Australian Model Railway Magazine*. ■



The New Cab Control Has Arrived!



Stock #50310

- Now Includes Our All New Mobile Control Pro Throttle
- ALL NEW Real Scale Speed Display and Physical Brake Slider
- Control Over 16,000 Locomotives
- Simple Consisting
- Can be used with other WiFi Throttles and Devices
- Variable Voltage 7amp Power Supply For Use With All Scales
- Built In WLAN Access Point
- ECoSlink Port for use with all ESU accessory decoders

Simply connect the Cab Control to your layout and enjoy your trains!



SCAN ME For More Information

Mobile Control Pro



Also sold separately as #50116

www.loksound.com



Introducing the UT6 & UT6D Utility Throttles for Digitrax Complete Train Control!



- Compact size for easy one-handed operation
- Color 1.5" LCD Screen
- Full numeric keys for easy Locomotive selection
- Fine speed control with a large encoder knob
- Removeable LocoNet® cord
- Forward/Reverse toggle switch with Braking
- Off/On switch, uses AA or BP600MH batteries

UT6

Utility Throttle

\$105.00 MSRP

UT6D

Duplex Utility Throttle

\$170.00 MSRP

**View all features and *more*
on our website!**

Find out more @ www.digitrax.com/throttles/



REGISTER
(free)

[INDEX](#)

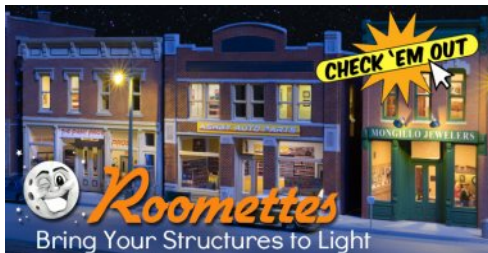
[TABLE OF CONTENTS](#)

MRHMAG.COM

[INDEX](#)

[TABLE OF CONTENTS](#)

MRH MARKETPLACE



MONASHEE
LASER
ENGINEERING

**COME VISIT US
CLICK HERE**

MANUFACTURERS OF FINE RAILROAD
STRUCTURES AND ROLLING STOCK MODEL KITS

Fall's coming ... indoor modeling time soon!

**HOBBY
MARKETPLACE**
ads are
economical
and effective.
Click [HERE](#) to learn more.

ABR Model Works
RECENTLY RELEASED

• Over 300 HO & N 3D-printed parts
• Details for any era
• Now USA-based!

SHOP NOW

LOOK at what's new at Black Cat this month

Click here for our website

**CPR OBS railings
HO & N scale etched brass**

(204)489-5005
ajfergus@mymts.net
blackcatdecals.com

MRH MARKETPLACE | 2

NOBLE GAS & TUNGSTEN **NEON SERIES**

1:87 - HO SCALE

THE Whistle Stop CAFE

GUSTO-REY HANDMADE CIGARS

KEYES LOCKS EST. 1936

NEON SIGN KITS

LEARN MORE!
• ASTONISHINGLY REAL
• 200+ NEON DESIGNS
• FREE TEMPLATES

@DVLDESIGNLLC
CHECK OUR INSTAGRAM TO SEE BEHIND THE SCENES

Model Railroad Control Systems

Geoff Bunza Project Boards
DCC Occupancy Detectors
CMRInet Compatible Nodes
Layout Telephone Systems
RFID Switchlist Generator
Switch Machines and Drivers

Click Here

Come visit our booth at Trainfest in Milwaukee (Nov 1-2)

Product demos and show discount!

Please visit our website and online store!

LOGIC RAIL™ TECHNOLOGIES
info@logicrailtech.com (281) 251-5813
www.logicrailtech.com

click to learn more!

East Coast Circuits
Innovating Your Model Railroad Layout

P.O. Box 25412
Providence, RI 02905

Lighting Circuits For Your Layout

Random Lighting Circuit • Burning Fire Circuit
Traffic Light Circuit • Crossing Signal Circuit

Custom Lighted Vehicles
HO & O Scale Emergency Vehicles
HO & O Scale Trucks & Cars

Eastcoastcircuits.com Eastcoastcircuits@gmail.com

PRE-SIZE MODEL SPECIALTIES

P.O. Box 6 Paonia, CO 81428
Ph. 970 527 4586
Made in The USA

Cast resin items for All Scales.
Tunnel portals, bridge piers, abutments, culverts, and retaining walls.
Trackside details and sage brush tree armatures.
"FREE SHIPPING see website for details"

WEATHERING POWDER

MONROE MODELS

www.monroemodels.us

Andy Reichert's Proto-87 Web Pages.

A source of information and support for **the Real Proto-87 Standard** and for more Accurate and Realistic Model Track in general

www.proto87.com

PRECISION DESIGN CO.

**CUSTOM DECALS FROM
YOUR OWN ART IN JUST ONE DAY**

PDC.CA

FULL COLOR & SOLID WHITE

Great Decals!™

FEC, Interstate, Virginian Railway, & L&N Titles
After Hours Graphics Line
Coupler Gages and More
In O, S, HO, and N Scales



MODELING SIGNS FROM PHOTOGRAPHS



1. Geoff shows how he modeled these prototype signs.



REGISTER
(free)

[INDEX](#)

[TABLE OF CONTENTS](#)

[MRHMAG.COM](#)

[INDEX](#)

[TABLE OF CONTENTS](#)

Model Railroad Hobbyist | September 2025



DR. GEOFF BUNZA GENERATES SIGNS FROM FROM OLD PHOTOS...

THIS ARTICLE EXPLAINS HOW I RECREATED TWO SIGNS: VEEDERSBURG GRAIN AND CARDINAL CAFÉ.

The signs were poorly photographed, but with Corel Paint Shop Pro (PSP) and Microsoft Power Point I restored them for use in scale models.

I am most comfortable with the two applications mentioned, though equivalents for both are available on the web, some at lower cost, or free. I hope the methods shown here can be applied in other forms.

VEEDERSBURG GRAIN

On the *MRH* forum AndyZ posted a picture of the Veedersburg Grain Mill from his home town, hoping he might get some help how to recreate it for his layout.

I could decipher Veedersburg Grain, but not much else. My first step is almost always to take the “best” photo (in this case the only photo) into PSP, crop the sign, apply Adjust->One Step Photo Fix, magnify the sign in the window on-screen, and see if I can read it [3]. Veedersburg Grain Inc was readable, but not the two logos. I used Google to search for Veedersburg Grain, both text and picture, but no joy.

Google can search for exact and similar pictures, and is sometimes very useful. Fortunately, AndyZ named the ANAFAM logo (American National Feed and Mineral) in his original post and barr_ceo posted a picture of an ANAFAM Feeds pencil in



2. Starting point photo: Veedersburg Grain. AndyZ's original contribution



3. Here is the magnified image of the sign from [2]. Unfortunately, the sign was small enough in the original image that attempts to magnify and sharpen the image left the text all but unreadable.

MODELING SIGNS FROM PHOTOGRAPHS | 5

the *MRH* Forum comments, and that nailed-down the logo text in the lower left [4].

AndyZ also indicated the mill was located in Indiana. So I searched for feed mills in all the adjoining states. I found references to “Master Mix” feeds, chicken feed, and hog feed – progress, but none with the same sign.

Since this was from AndyZ’s home town back in the 1950s I reverted to my standard search for rare “old stuff” – eBay. I found a rusty old tin sign with the correct logo.

I brought the photo into PSP. The first step was to “flatten” the photo, using the Perspective Correction tool [5].



4. ANAFAM logo as found on a pencil.



5. This is the original cropped photo I found on eBay. Look closely to see the outline with four square dots in the corners. Much of the outline is snug against the edges of the sign, which is how I want it to be for the perspective correction.

MODELING SIGNS FROM PHOTOGRAPHS | 6

I used the selection tool to outline the sign to correct its perspective, making sure that the four square corners of the selection box were as true to the sign as possible. If you make a mistake or slip with your mouse placement, just “Undo” the command, reset the edge outline, and try again.

With a little practice, it works great [6]. For prototype photos, this tool is almost always used. Next crop (trim) the sides for square corners and minimal excess space [7].

My goal was to create a sign in its original, delivered condition, so the faded white needed to be replaced with a true white.



6. New perspective.



7. Cropped photo. The logo on the elevator billboard had no “FEEDS” text underneath, so I didn’t need it here.



MODELING SIGNS FROM PHOTOGRAPHS | 7

This is easy using the PSP's color replacement tool. Photo [8] shows the process.

For color substitution, set the size of the cursor, the background and foreground colors, and the hardness to 99. Use the eyedropper to select the gray/off-white Master Mix background color, and it will appear in the middle upper left color box in the Materials window.

Change to the foreground color by selecting the quarter circle arc, and the gray color will appear in the lower right box. Now use the eye dropper again and select a bright white from the color bars (upper left box).

Go back and select the color replacer from the leftmost menu. Use your mouse to "wipe" over the picture, and you should be able to selectively change areas of the picture from gray to white.

Once you've brightened the logo, use the "paint brush" (selecting black) or the rectangle drawing tool (setting foreground and background colors to black) and fill-in and trim the edges of the logo. Save it as a JPG or PNG picture. Mine wound up being about 680x971 pixels, a size I could work with.



8. Color substitution in PSP.

MODELING SIGNS FROM PHOTOGRAPHS | 8

With a little effort, the cleaned-up Master Mix logo appears as in [9]. The real benefit of starting with the logo is you have a clean sign element that is about the right proportion. Its proportions will be used to determine the size and placement of the entire sign.

Saving a picture like this one as a JPG will preserve its white background. Sometimes this is not good, but we can selectively erase the white background around the logo, and only represent the logo alone by saving it as a PNG file. Learning which file formats preserve different photo elements is valuable.



9. Edges cleaned.





J. Regier

FLESHING OUT THE DIFFERENCES

We thought it worthwhile to illustrate some of the key differences between JPG, PNG, and GIF files as to how they function. Many of the photos you'll encounter online are in JPG format. If you're looking for a logo, however, you may encounter them in PNG or GIF format.

As mentioned, the author's Master Mix logo was in JPG format. I redrew it using "Graphic" on my Mac (any vector illustration and design drawing program such as Adobe Illustrator, Affinity Designer, Libre Office Draw, etc., would work, and would be our recommendation) so I could save it in the above-mentioned formats [10].

Exporting the file as a JPG saves it as a rectangle, with an automatically assigned background of white, with full opacity. Graphics exported in PNG or GIF format will also export a rectangular image, but will automatically assign a transparent background, which can be beneficial if you are using the graphic on a sign that is something other than white. I dropped JPG, PNG, and GIF versions of the graphic onto a blue background in Adobe Photoshop Elements to illustrate [11].

Worth noting is that if you import a PNG or GIF and save it as a JPG, you will replace the transparent background with white, so be sure that's what you want. Conversely, if a JPG is saved as a PNG or GIF, they will maintain whatever portions of the JPG were white, so the image would have to be modified to erase or delete the background.



10. I recreated the Master Mix shield logo in Graphic. To find the font, I uploaded the image file from [9] into the What the Font tool at MyFonts (www.myfonts.com/pages/whatthefont). The shield shape has an infill value of white at 100% opacity. The empty portions of the canvas appear as a grid in the lower corners.



11. The Master Mix image on a blue background, from left to right in JPG, PNG, GIF, and PNG. For the sake of illustration, I set the fill color for the shield shape at far right to white with 50% transparency before exporting, so the blue background shows through.

After saving the Master_Mix.jpg file, let's switch to PowerPoint. It has limited photo editing, but has many more editing options for signs.

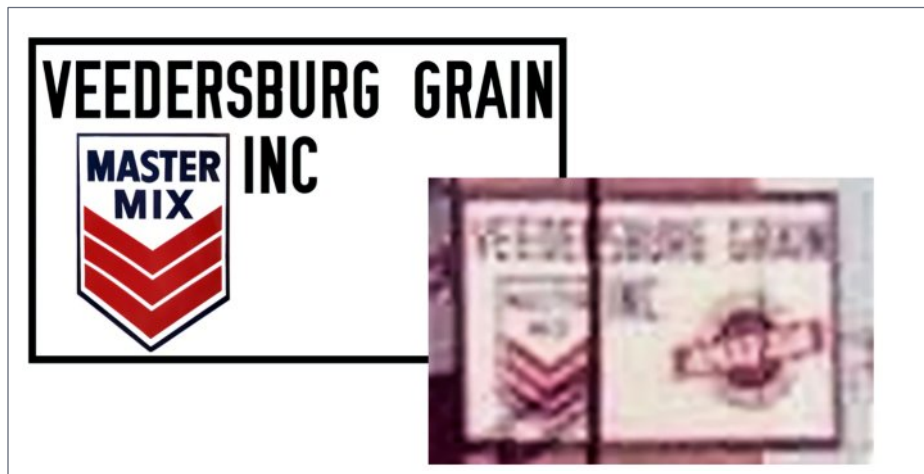
Open PowerPoint (PP) and insert the Master_Mix.jpg onto a completely blank working "slide." The fully cropped and straightened sign from the original photo becomes the placement guide.

I drew a 6-point (6-pt) black rectangle (specific size at this point not important) that occupied most of a slide in landscape format, and placed the "Veedersburg Grain" text in the rectangle. I searched for a font from the standard list of fonts in PP, using the "V" and "E" as my guide. I found "OPS-DIN" to be a good match.

I tried to match the edges of the logo with the letters in the text, keying off of the prototype sign. This is a tedious and iterative process, matching fonts, size, and the Master Mix logo. Remember that the logo has the best-represented proportions – I used it to key the size and placement of everything else in the sign. The "INC" was added and placed next, using the same font.



12. Master mix in rectangle.



13. Fitting the border rectangle.

The ANAFAM logo remained, and it was a pain. I will go through all the steps I finally found to work.

As usual with text, I start trying to find a usable font, and in this case the font will need to easily lend itself to “outlining” for the logo. Again, after a tedious search I found the “Bahnschrift 60 Bold” font, which looked good for a start.

On a separate blank slide, I placed the ANAFAM text. Selecting the text alone, select (right mouse-click on selected text) format shape and text options. Select White solid fill, and black solid line 2-pt text outline. You should have the text as shown in [14].

Next highlight and select the ANAFAM text, then go to the top Menu->Format->Text Effects->Transform->*abcde* from the lower left bottom selection (the “*abcde*” appears on a slant from lower left to upper right). *Note: you may need to expand the PP window to maximum size to see all the menu picks I described.* If you picked successfully, you should see your ANAFAM text as shown in [15] with the letters inclined rising from left to right.



14. Outlined text with white fill.



15. Transformed text ready to slant.

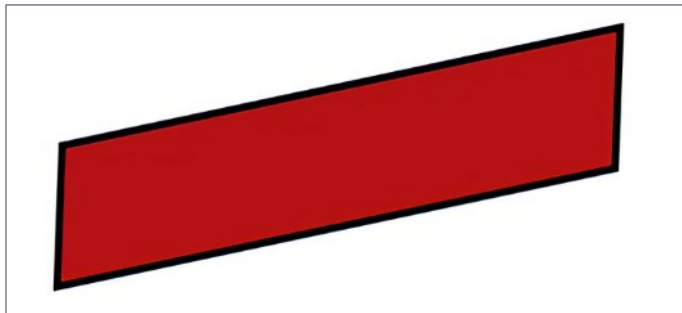
Next create a parallelogram big enough to enclose the ANAFAM text, and fill with red [16]. If you copy the Master Mix sign to your working ANAFAM slide (you can reduce the size), you can select the exact same red using the “Eyedropper” selection from the color selector for Fill, and then selecting the red from your original Master Mix photo. Remember when using actual photos for color references that the actual colors can fade and discolor, especially on outdoor signs.

Set the outline color to black, and the thickness to three points. Rotate the red stripe to match the incline of your ANAFAM text, and the completed shape should look like [17].

Now select your red and black parallelogram on its edge, and right-click on the drop-down menu “Send to Back.” Next you can move it over the slanted ANAFAM text, and you should see something like [18]. Try to match the background and text positions, using the blurry original photo as best you can. Now is also the time to try and get the slant and text combined looking good.



16. Background parallelogram.



17. Outlined and rotated parallelogram.

Next form a circle using the insert shapes menu pick. Set the circle outline to 3pt black line, with the same red fill you used for the parallelogram background stripe [19].

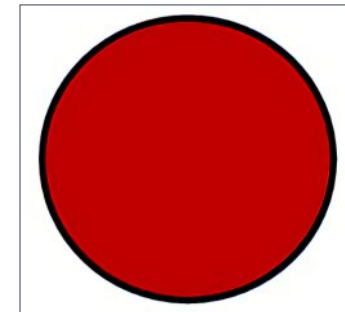
Select the filled circle edge and “Send to Back” as before. Then move it onto the ANAFAM banner and position it referring to the original Mill sign. (See [20]) I used the intersection of the circle near each of the letters to size and position the red circle. Take your time until you think it looks “good enough.”

Next form the outer background circle, “Send it Back [21].” and then move it over your ANAFAM sign, like [22].

Iterate on positioning all the elements of the ANAFAM logo until it looks just right. Now take your mouse and select all elements



18. ANAFAM text on background.



19. Inner background circle.



20. Inner circle to the rear.

in the logo by left clicking a corner outside the logo and expanding it until the logo is completely contained, and all elements are highlighted together.

Move your mouse onto the selection (no click yet) until the pointer turns into a vertical cross, then right-click, and select Group->Group from the drop-down menu. You can now treat your ANAFAM logo as if it were a single graphic.

If you want to go back and manipulate individual elements again, you can select the graphic, right-click and select Group->Ungroup. Now you can select the ANAFAM logo, right-click and copy it back on the slide with the Veedersburg Grain rectangle. You should have something like [23].

The logo still needs a little resizing. I copied a small, well-proportioned picture of the prototype mill temporarily onto a slide from time to time as a placement reference.

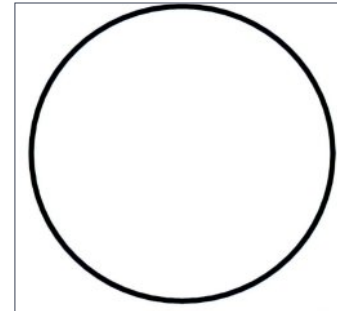
Since we “grouped” all the elements of the ANAFAM graphic, we can easily resize it in PP by clicking on the logo, holding down the shift key, and then grabbing a corner of the outline, and moving it toward the center to reduce the size of the graphic proportionately.

Once satisfied with the entire sign in PP, we can find the menu pick at the top of the window for Export->Change File Type->JPEG File then Save As, set file name and folder location, click Save, and select “Just This One” when asked which slides you want to save.

Now you have a JPG photo you can re-size, duplicate, rotate, and crop using any photo editing software. Because we worked with reasonably sharp, well-sized graphic elements, scaling for most models should be easy.

CARDINAL CAFE

AndyZ's next challenge was “The Cardinal Cafe” also in his home town. We have a “wealth” of three incomplete photos for reference, two of which are in black-and-white [25, 26, 27].



21. Outer background circle.



22. Second outer background circle added.



23. ANAFAM logo placed.



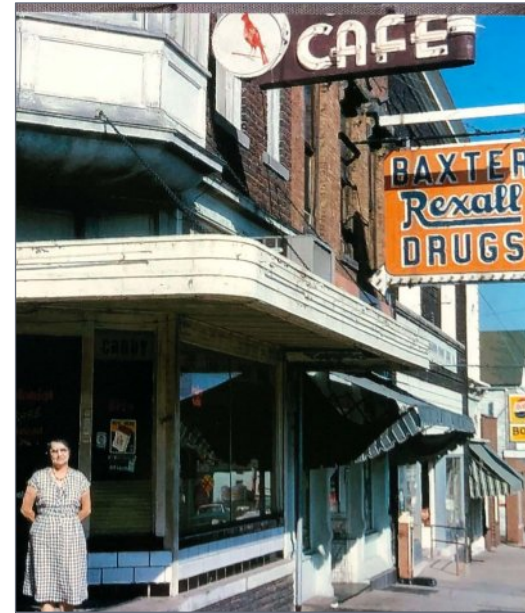
24. Veedersburg Mill sign complete.



25. Reference photo A. AndyZ's original contribution



26. Reference photo B. AndyZ's original contribution



27. Reference photo C. AndyZ's original contribution

A Google web search revealed no more information, and the cafe sign is unique. The only references for size are the width of the sidewalk, the windows, and the light post. These are *relative* indicators; I had no actual measurements.

The Cafe font and storefront remind me of pre-war Art Deco [28, 29]. I did not think I would ever find the same font, so I was convinced I would have to recreate or “fix-up” the photo font. The cardinal image looked impossible to me, so I left it for last [30]. With not the most optimistic outlook, I went from here.

I flattened the sign perspective as for the Master Mix sign [31]. This left an odd shape on top of the sign’s “flattened perspective” since the top of the sign had been cut off in the original photograph [30].

Simply applying the PSP perspective correction tool would cause it to lose the top of the picture. The remedy is to take the photo in [28], paste it onto a much larger background, and then



28. The zoom-in from [23] showed the font for "cardinal," and also the cardinal image on the sign. However it did not help us colorize the image, and the original photo was so pixilated that the results in the enlargement were blurry.



29. The zoom-in from [24] showed the complete sign, but the text and logo were unclear.



apply the perspective correction tool. This will correct and preserve the top of the photo, but adds the odd shape in [31] to the top.

Now the major task is cleaning up the graphic. Part of the issue is removing the neon lights highlighting the text and sign. Once "flattened" I began the tedious task to repair the letters with the paintbrush and clone brush tools, with the goal of making the "cafe" text outline crisp, the white fill a solid white, and the background "brown" a solid color.

Paintbrush will place a solid shaped color where ever you place your mouse and left click. In the menu bar you can set the shape



30. Best detail, color, and cardinal graphic were from [25].



31. Straightened sign.

(square or circular), the size, the color, and the hardness (which will fade the edges – in this case I set it to 99 which should fill in the entire brush shape). Remember you can enlarge the image you are editing for better precision. Change the shape and size to match the edges of the text characters you are editing [32, 33].

I am a firm believer in “good enough.” Working on these signs filling the PSP and PP windows as much as possible will yield good graphics, even with tiny irregularities. Your signs will likely need to be reduced in size for your models, and with that reduction the imperfections become insignificant. Enlarging the graphic being edited will allow you to modify it pixel by pixel. I simply choose to find better things to do with my time!

Once the “cafe” text looks good, I save it in PSP as a JPG file (you can up-size the graphic two or three times by hitting shift-S if



32. Remove neon lights, fix letters.



33. Create a clean base.

need be), and then insert the new graphic into a PP blank slide. This will make the next steps easy.

Create a large rectangle with the same background “brown” color (using the eyedropper in PP color selection). Move the “cafe” text onto the large background rectangle after setting the text “Bring to Front.” The reference for sizing everything else comes from the text.

Create and place a small white rectangle to the right of the “E” to the edge of the sign—don’t worry about the length, just the position and width. Use [31 and 32] for placement references.

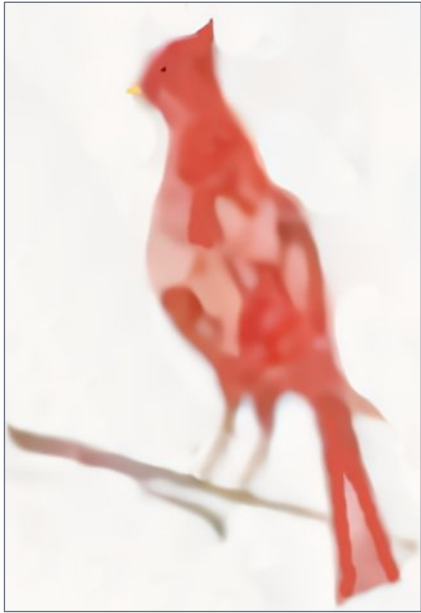
Next insert a solid white circle, again checking its relative size and position with the pictures of the prototype sign. Then crop the overall sign to size. [33] should be close to the result. Save the graphic as a picture (JPG or PNG) for later use.

I decided it was time to grab the cardinal and hope for the best. [31] was the best representation I had of the cardinal graphic – and it was unique. It actually looked hand-painted. PSP editing this took some time, as I wound up editing some areas pixel-by-pixel.

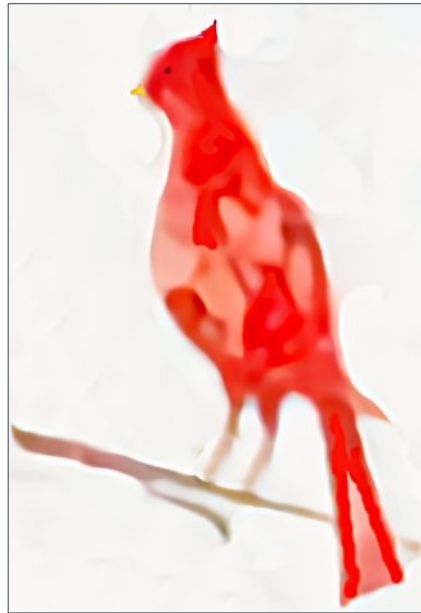
First, I cropped the entire bird from the [31] photo, and pasted it onto a much larger white background [34]. I enlarged the head and finished-off the top to create the tuft. Next was the beak. I formed it with two yellow lines, and was happy with that.

The stick it stood on got some attention, pixel by pixel. I did not like the colors – too faded for me. I wanted something more vibrant. I spent way too much time adjusting the color hue, saturation, lightness, and vibrancy. I even tried the Color Replacer tool. I stopped when satisfied. It wasn’t perfect, but much better than the start – good enough [35].

You may use the Color Replacer tool to change the off-white background to white. You can adjust the “Tolerance” parameter for a sloppy range color match with good effect. Save the new cardinal as a file.



34. Cardinal graphic cropped and ready for work.



35. Enhanced Cardinal graphic.



I then switched back to PP, inserted the saved file [33] onto a blank PP slide, then inserted the new cardinal file (saved previously [35]) onto the PP slide just created, making sure the cardinal was “Brought to Front.” I switched back to PP because resizing, rotation, and positioning are all easier to do in PP.

The cardinal graphic is centered in the circle. Relative sizes are checked against the original photos. The cardinal graphic can be easily rotated in position [36].

Next, I went searching again for another font for the “CARDINAL” text, and found the “Fira Sans ExtraBold” font in the PP font list. At Bold 54pt (based on my resizing in PP) it worked with all capital letters, set to white, and brought forward. It was positioned onto the sign. The sizing was set to match the positioning of the text relative to the edges in the “cafe” text. I heaved a sigh of relief – it worked!

Last, an easy white line was added across the top from the cardinal circle to the other edge, using the line-drawing capability in PP with 8pt width. A final edge crop of the whole made sure the line edges were crisp and well-sized. I then saved the entire graphic as an exported jpg file without any size reduction. [37] was the result. This was a two-sided sign, so I had some work left to rearrange the graphic elements to create the sign reverse, shown in [38]. This was straightforward.

One of the valuable things about saving graphics to photo files (JPG, PNG, etc.) is that both PSP and PP can resize them (until artifacts are created due to resolution limits). I mentioned earlier that small imperfections are negligible if you start with large graphics and then reduce them.

The Cardinal Cafe sign did not have an inherent size reference I trusted. When I looked at [26]. I noticed the sign might have been as long as the sidewalk below it was wide. For a small Indiana town in 1955, I estimated that could have been 4-6 feet. The car at the curb in front was likely no more than six feet wide.



36. Cardinal attached.



37. Cafe striped and cropped.



38. Cafe reversed sign.

Assuming our sign was no longer than six feet, I rescaled the Cardinal Cafe sign in PP to approximately 0.827 inches (PP ruler), and placed it in scale next to my working graphic in PP. [39] This gives you an idea of the reduction necessary for an HO scale (87.1:1) model. You may need to increase the size of the magazine photo a bit more, but perhaps you will understand why I don't sweat the small stuff.

The capabilities described herein have been available in PSP and PP for years, so you do not need the latest version.

The transformations I described might one day be supplanted by more sophisticate Artificial Intelligence-enhanced tools. Some AI-based graphic tools are already available to remove picture elements, enhance resolution, and reduce distortion. Knowing how to use your tools, in whatever form, is essential for improving your modeling. ☑



39. Reduced HO scale signs compared to PowerPoint full window graphic.

MODELING SIGNS FROM PHOTOGRAPHS | 27

DR. GEOFF BUNZA



Geoff started as a Model Railroader when he received a Mantua train set for Christmas, at age 6. He fed his interests through college, becoming a member of the Tech Model Railroad Club (TMRC) at MIT while earning his doctorate and three other degrees in electrical engineering.

Geoff has presented clinics for the NMRA at divisional, regional and national meets, and the National Narrow Gauge Conventions. He has authored over 50 articles on animation, electronics and modeling for *Model Railroad Hobbyist*, the *New York Central System Historical Society Modeler*, *Railroad Model Craftsman*, and *The HO Collector*. Scale model animation in HO is one of his great interests. He is blessed with his wife, Lin, in marriage for 46 years, two terrific sons, and an amazing young grandson. Geoff is a life member of the NMRA and holds an Extra Class amateur radio license, call sign AD7JP. ■

Did you see this article?

in the **SEPTEMBER 2025 MRH RUNNING EXTRA!**



Ballasting track with a purpose

Get full eBook now ►

← click here



Each eBook has 75-100 pages

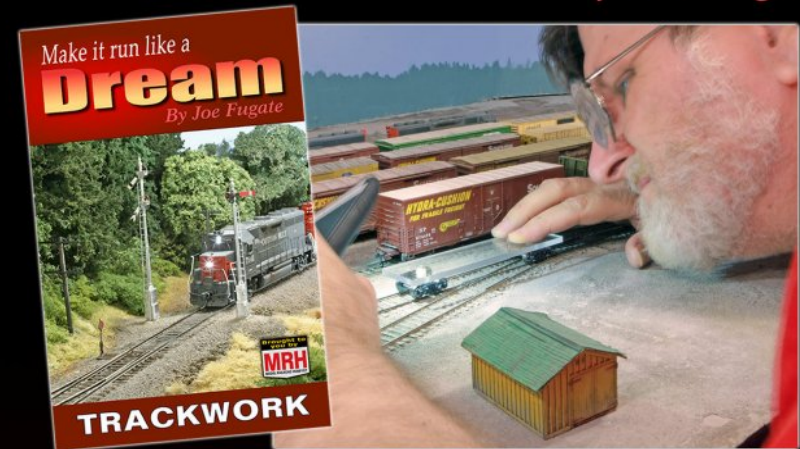
RUNNING
EXTRA

Make it run like a

Dream TRACKWORK BOOK

104 pages

By Joe Fugate



Available from the MRH Store: store.mrhmag.com

"The new bible of track laying." - L.T.

"Chapter 3 alone is worth the cover price." - B.M.

"A lot of info ... copiously illustrated.." - J.A.

Click me to

Get eBook NOW >>

~~\$14.99~~ \$9.49

Format: Landscape and Portrait
PDF

Click me to

ORDER PAPERBACK >>

~~\$31.99~~ \$27.99

FREE shipping in US!
Foreign shipping 50%

Other books in this series: ROLLING STOCK (available now) and LOCOS (Fall 2025)



REGISTER
(free)

[INDEX](#)

[TABLE OF CONTENTS](#)

MRHMAG.COM

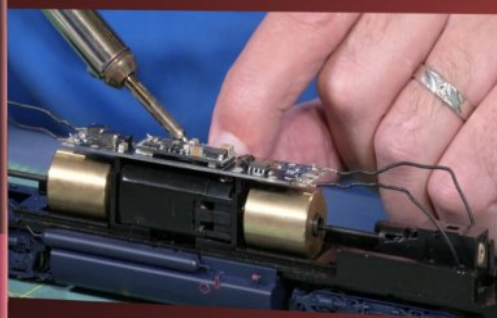
[INDEX](#)

[TABLE OF CONTENTS](#)

VIDEO from the Model Railroad Hobbyist Store

Running time:
3 hrs 53 min

TRAINMASTERS.TV'S
HO DCC
Install examples



Follow these step-by-step DCC installs
Includes JMIR DecoderPro tutorial

MRH DVD

Download
~~\$24.99~~

\$19.99

DVD
~~\$45.00~~

\$31.77

Download NOW

Get Video
Download

DVDs: FREE SHIPPING US
50% OFF SHIPPING FOREIGN

Order the
DVD Set



LOOK column

Model Railroad Hobbyist | September 2025



JTC N scale 60' Pullman Standard container flat car

JEFF SHULTZ SHOWS US A 60' CONTAINER FLAT CAR FOR THE LATE 1960s TO PRESENT ...

THE JACKSONVILLE TERMINAL COMPANY (JTC) HAS PRODUCED AN N SCALE model to replicate the container version of Pullman Standard's (PS) 60' flat car.

THE PROTOTYPE

The introduction of containerized intermodal freight in the 1960s began a revolution in railroading. The International Standards Organization soon established two standard container lengths of 40 feet and 20 feet, and railroads modified existing cars and purchased new ones specifically designed to carry these containers and road trailers.

PS built at least 4,000 of its new 60' flat car in a variety of styles. A subset of these were designed specifically for container service.



REGISTER
(free)

[INDEX](#)

[TABLE OF CONTENTS](#)

[MRHMAG.COM](#)

[INDEX](#)

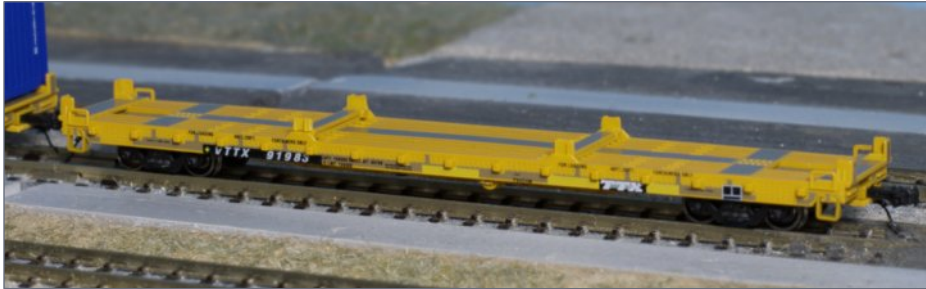
[TABLE OF CONTENTS](#)

60' PULLMAN STANDARD STANDARD CONTAINER FLAT CAR | 2

Instead of the usual wooden or steel deck, these container flats had pedestals to carry the containers.

The TTX Corporation, a flatcar-pooling company originally created by the Pennsylvania Railroad, Norfolk & Western, and the Rail-Trailer Corporation, purchased many of these container flats, and designated them with the reporting mark VTTX.

As of June 2004, the *Official Railway Equipment Register* listed over 300 of the VTTX cars in service. By the 2010s, the earliest-built of these cars would have reached their 40-year service life, though cars built after July 1974 had a 50-year regulatory service life. JTC's models would be good for any time between the 1960s and the present.



1. VTTX 91983 configured for three 20' containers.



2. VTTX 91983 configured for a 40' and a 20' container.

60' PULLMAN STANDARD STANDARD CONTAINER FLAT CAR | 3

WHAT'S IN THE BOX

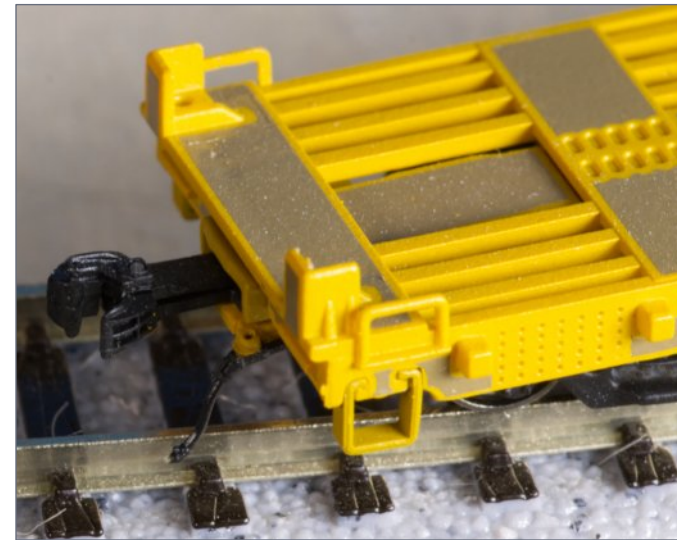
The two models provided to *MRH* are VTTX 91973 and 91983 and are both described as “weathered TTX patch over TrailerTrain 60' flat car, 8-11 years weathered car.”

The weathering consists of a darker yellow color than the “new” version, with the TTX logo on a painted lighter yellow patch where it would have had the “TT Trailer Train” markings.

The cars come configured with container pedestals for three 20' containers, with parts to swap one of the center pedestals for a simulated collapsed connector to accommodate a 40' container.

JTC's 40' and 20' containers fit on the cars snugly enough that you can lift the car by the containers, though this is not recommended.

The cars are equipped with 70-ton trucks and 33" metal wheels of JTC's own design. They are also the first models released with body-mounted JTC VRK (“Very Real Knuckle”) couplers. They are Micro-Trains-compatible, and test at the correct height, though the VRK couplers do not have magnetic trip pins.



3. The Very Realistic Knuckle (VRK) coupler.

60' PULLMAN STANDARD CONTAINER FLAT CAR | 4

When empty, the cars weigh 0.4 oz, significantly under the NMRA recommended weight of 1.2 oz for a 4.5" car. Three 20' containers or one each 40' and 20' containers increase the weight of the car to 0.9 oz.

The bottoms of the containers are removable, so adding more weight to a loaded car is simple. The models tracked through 11" radius curves without difficulty, and while the cars did roll on a slight slope, they stopped quickly on level track.

The cars are available through dealers or directly from JTC (jtcmodeltrains.com/collections/pullman-60-flatcar-series). MSRP is \$48.95-\$49.95. ☑



4. Underside of the N scale 60' Pullman Standard container car with brake components and lines.



5. Both cars together, showing different container arrangements.

60' PULLMAN STANDARD CONTAINER FLAT CAR | 5

Did you see this article?

in the **SEPTEMBER 2025 MRH RUNNING EXTRA!**



**Modeling SP
automobile cars**

Get full eBook now ►

click here



**RUNNING
EXTRA**

Each eBook has 75-100 pages



REGISTER
(free)

[INDEX](#)

[TABLE OF CONTENTS](#)

[MRHMAG.COM](#)

[INDEX](#)

[TABLE OF CONTENTS](#)

Get more articles like this

GIVE IT A LIKE 



WAIT!

**MRH helps
you avoid
breaking the
bank!**

HOLIDAY SPECIAL:

Subscribe now and get
the next 12 issues plus
ALL 71 BACK ISSUES!
(37 cents per issue)



MRH RUNNING
EXTRA
Apprentice with savvy modelers

2.99 per 230+ pgs

**Get
MRH
Running Extra**

[click here](#)

SAVVY MODELER *Online*



Get more articles like this

GIVE IT A LIKE

Model Railroad Hobbyist | September 2025



Making rocks from foam

Youtuber **railfan220** shows how he uses foam to form and carve realistic rocks for his Marias Pass layout area.

He uses pink foam and shows exactly how he installs and carves it to get some nice looking rocks. Once he has shaped the rocks, railfan220 goes on to show how he paints the rocks and adds water seepage to the rock face. As a side note, it's nice to see **railfan220** is a young guy (in his 30s maybe) who is building a very nice layout and telling us all about it. ☒

**VIEW READER
COMMENTS**

▶ GREAT MODELER VIDEOS ON THE WORLD WIDE WEB



Amherst Railway Society
presents



January 24 & 25, 2026

Eastern States Exposition
West Springfield, Massachusetts 01089

railroadhobbyshow.com

operating model railroads
manufacturers & dealers
railroad art and photography
railroad books and videos
model railroad clinics
family entertainment
tourist railroads
collectibles



America's largest railroad-themed trade show

amherstrail.org

Eastern States Exposition is the home of the BIG E Agricultural Fair



REGISTER
(free)

[INDEX](#)

[TABLE OF CONTENTS](#)

SEPTEMBER NEWS

column

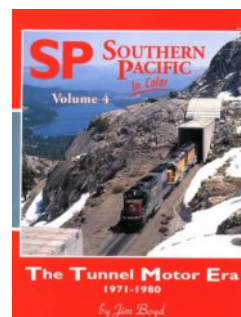


Model Railroad Hobbyist | September 2025

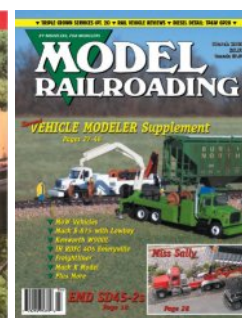
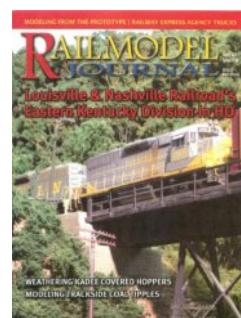
RICHARD BALE AND JEFF SHULTZ
REPORT THE LATEST HOBBY
INDUSTRY NEWS ...



NEW PRODUCTS FOR ALL SCALES



Morning Sun has released a digital reprint of Jim Boyd's *Southern Pacific Color Volume 4*. The eBook covers the Espee's tunnel motor era including the troubled 1970s. Info: www.morningsunbooks.com



ScaleTrains has posted five out-of-publication model railroad and railroading magazines to the internet, available for reading online or downloading as PDF files. Available at magazines.scaletrains.com, the magazines are 1001 Model

THE LATEST MODEL RAILROAD PRODUCTS, NEWS & EVENTS

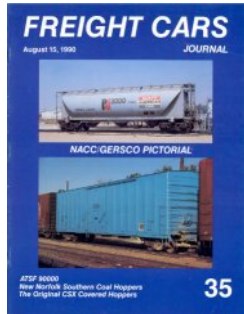
MRHMAG.COM

[INDEX](#)

[TABLE OF CONTENTS](#)

Railroading Ideas, Model Builder, Model Railroading, Pacific News/Pacific RailNews/RailNews, and Railmodel Journal.

Info: scaletrains.com



The archive section of the **Railroad Magazine Index** (a service of **Iowa Scaled Engineering**) has a new publication available, with David Casdorph's *Freight Cars Journal* now available for reading online or downloading as PDF files. If you have the photo supplement for issue #58, please contact support@rrmagazineindex.org. Info: www.rrmagazineindex.org/archive

CLUB CARS



Custom decorated Accurail HO scale kits available from **Superior 1980** include a 40' double-sheathed wood boxcar decorated for Meteor Motor Car Co., a 40' wood reefer leased to the Pere Marquette Railroad by Northern Refrigerator Line, and a 55-ton twin bay coal hopper decorated

for Litchfield & Madison. The easy to assemble kits feature Accurail's usual attention to detail including appropriate trucks with Delrin wheels and AccuMate knuckle couplers.

Info: Superior1980@yahoo.com

HO SCALE PRODUCT NEWS

HO scale kits for two versions of an ACF twin-bay covered hopper are now available from **Accurail**. One is decorated for



Chesapeake & Ohio, the other has data only, making it ready for decaling as any modeler chooses.

HO scale kits for ACF triple bay covered hoppers decorated for BNSF are available in a 3-pack with different car numbers. The economy-priced kits are also available singly. All Accurail car kits come with appropriate trucks with Delrin

wheelsets and Accumate knuckle couplers. Info: accurailinc.com



Now in stock from **Bachmann** are SD40-2 locomotives in HO scale in several new paint schemes. The models feature SoundValue DCC,

all-wheel drive, can motor, fine-scale handrails, blackened metal RP-25 contour wheels, and E-Z Mate Mark II couplers.



Road names available are Santa Fe (Kodachrome), Conrail Quality, Milwaukee (Bicentennial), CSX, KCS, Norfolk Southern, and Union Pacific.

Info: shop.bachmanntrains.com



Bowser is taking preorders for modified versions of the RS3 locomotive known as the DeWitt and Juniata RS3m. Between 1972 and 1978, 98 Alco RS-3 locomotives were

rebuilt with ex-E8 EMD 567B prime movers by the ex-NYC DeWitt and ex-PRR Juniata shops, involving both the Penn Central and Conrail.



The primary visual difference between the DeWitt and Juniata versions of the RS3m is a squared off full-width hood extension above the prime mover on the DeWitt

locomotives, whereas the Juniata versions had a narrower low-profile box beneath the exhaust stacks.



The DeWitt model will be available in three Penn Central numbers, three Conrail (PC Patch) numbers, and three Conrail numbers. The Juniata version will be available in three Conrail numbers, three Maryland & Delaware numbers, and

a special Juniata Hammerhead RS3m will be available in Conrail and as Lehigh Valley No. 211, currently part of the Rochester & Genesee Valley Museum. All models will be available as DCC-ready with a 21-pin socket and with LokSound 5 DCC/Sound. Preorders are due October 3, 2025. All photos from the Bowser website.

Info: bowser-trains.com



New from **Conowingo Models** in HO scale is a Bobber Pickle Car. Described as a whimsical twist on the original pickle car models, the car includes laser-cut wood components, custom decals, 3D-printed parts, Tichy details, LaBelle siderails, and Kadee Couplers.

Also new is an HO/HOn3 is Caboose #4, inspired by the Pickering #4 caboose at the Niles Canyon Railway in Fremont, CA. The kit consists of laser-cut wood components, custom



decals, custom 3D-printed parts, and Tichy details. Trucks and couplers are sold separately.

Info: conowingomodels.com

A new product from **English's Model Railroad**, a division of **Bowser Mfg**, is real coal hopper loads consisting of two packs of 3D printed bases covered with Pennsylvania anthracite coal. The bases are sized for specific hopper cars, to include:



Bowser: 100-ton hopper, 14 & 13 panel offset side hopper, H-21/H22 hopper, Gla hopper, GS 40ft Gondola, 55-ton hopper, 12 panel hopper.

InterMountain: 14 panel Coal Porter



Accurail: 50-Ton offset twin hopper, 55-ton hopper, 70-ton offset hopper.

Walthers: 50-ton War Emergency, 50ft 100-ton hopper, Trainline 2-Bay hopper.

Athearn: 2-bay hopper, 40ft 3-bay ribbed hopper, 40ft 4-bay offset hopper.



Rapido: H21A and H21E hoppers. Tangent: PS4000 HT 3-bay hopper, 3350cf quad coal hopper. Cars are not included.

Info: bowser-trains.com/history/englishcoalload.html



Jacksonville Terminal Company has released four new paint schemes of the 8-55-8 corrugated 4VI 53' container in HO scale. Available in three packs, the containers are decorated for Amazon, FedEx Multimodal, Walmart, and YRC. Info: jtcmodeltrains.com

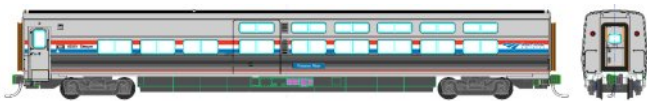


Kadee is selling an unlettered 40' PS-1 boxcar. Features include 6' Youngstown sliding doors, 4/5 Pullman-Standard (P-S) ends, a P-S roof, grated metal running boards, latitudinals, and brake platform; seven-rung separately applied ladders, Kadее self-centering couplers, and Bettendorf-style plain-bearing trucks with metal wheel. The unlettered HO scale ready-to-run model is painted boxcar red.



Kadee's August release is a 40' PS-1 boxcar decorated for the US Navy. Featuring 8' P-S doors, an Ajax brake wheel, and see-through roof walk, the car includes lettering for a ship date of 11-72.

Info: www.kadee.com



New HO scale models under final development by **Kato USA** include Amtrak Viewliner II, Superliners, and F40PH locomotives.

Three new Viewliner II cars include a sleeper with roomettes and bedrooms, a modern diner with booths and large windows,

New HO scale models under final



and a combination baggage/dorm car that provides overnight sleeping accommodations for crew members.



The models feature optional kinematic couplers for close coupling of the cars, and appropriate trucks with shock absorber detail and rotating bearing caps. An optional interior lighting kit (Item 7-504) will also be available.



Also coming from Kato is an HO scale version of a Metra F40PH diesel electric locomotive. Built by EMD, the F40PH has been the backbone of Chicago's commuter rail system since the early 1980s. With an output of 3,000hp, the F40PH was designed to handle the stop-and-go nature of commuter service.



Over the years, Metra has upgraded many of these units for modern operation resulting in several paint schemes. Road specific details will include ditch lights, cab air conditioners, fan height, directional headlight arrangement, and pilot, rear platform, and cab roof arrangement. The model will be available with DCC and sound installed.

Info: www.katousa.com

Throughout next year, **Rapido** will celebrate America's 250th birthday by releasing various models decorated in red, white, and blue.

Preorders are being booked now for a Santa Fe CF7 wearing fantasy livery inspired by the familiar 1976 Bicentennial scheme. The model will be the angled cab version of the CF7, with Cannon 36" cap top radiator fans, full underbody details, etched grilles and steps, working headlights, ground lights,



number boards, and a Stratolite beacon. Additional details include separate metal grab irons, and a multi-color interior with lighted gauges. Power options will be DC/Silent (21-pin DCC Ready) or DC/DCC/Sound (ESU LokSound), and a MoPower capacitor system for uninterrupted DCC power.



In anticipation of America's 1976 Bicentennial, the Lehigh Valley Railroad painted caboose No. 95085 in a patriotic red, white and blue scheme, complete with stars on the ends. The caboose was renumbered 1776. Although the LV was folded into Conrail later in 1976, the caboose continued to proudly wear its Bicentennial scheme until it was repainted Conrail blue.

Rapido plans to deliver an HO scale version of the LV caboose. The model will have a Duryea Cushion underframe, single square end windows, operating interior lights and multiple optional parts including stacks, window blanks, etched window frames and screens, and toolboxes. A MoPower capacitor for uninterrupted DCC lighting will be installed..



Originally designed for the Reading Railroad in the early 1920s, the prototype caboose was so successful that other railroads ordered copies. In addition to the Lehigh Valley birthday version, Rapido will offer the Northeastern caboose with porthole end windows, and a variety of other options including a Duryea or solid underframe.

Road names on Rapido's release will be Reading, Reading & Northern, Chicago & North Western, Conrail, Lehigh Valley, Penn Central, Rock Island, Union Pacific (ex CNW), Central of



New Jersey, Maine Central, Metro North, Province & Worcester, and Western Maryland.



In 1962 the Southern Pacific placed an order with Pacific Car & Foundry for 100 class 66-B-2 economy baggage cars. Rapido plans to deliver an accurate HO scale version of the cars based on field measurements including 3D scans of the prototype.



Decorating schemes will include SP (Daylight), SP business car (Scarlet stripe), SP (Choice of early or late doors), SP MOW, SP scale test car, Alaska Railroad, Amtrak Phase II, Eureka Southern, and Rock Island.

The models will feature Rapido's usual attention to detail including full underbody piping and rigging, separate metal grab irons, stirrups and end gates, sprung diaphragms, and SP Class 4-T-1 trucks with full brake rigging. Power cars feature generator sounds and a MoPower capacitor system for uninterrupted DCC power. A minimum track radius of 22" is suggested. Images in this report are courtesy of Rapido Trains. Info: www.rapidotrains.com

In February 1973, Norfolk & Western built the first of 1,500 class HC-71 4750 cu. ft. covered hoppers in its Roanoke Shops. In many ways, N&W's home-built HC-71 was similar, if not identical, to the 4750 car Pullman-Standard introduced the previous year. **Tangent Scale Models** has released an accurate HO scale version of the Roanoke 4750 HC-71 in five decorating schemes, plus two assembled but unpainted models.



Portloc outlets gates, slot-style jacking pads, and an ACI label.



This version represents 4750 cu. ft. cars built at Roanoke in 1979. Like the prototype, Tangent's HO scale version has smooth-style roof hatches, open-circle jacking pads, double-style COTS boxes, and a mix of Miner Selflock and Keystone Portloc outlet gates. A similarly equipped painted but unlettered model is also available from Tangent.



Models representing 1986 Clayton-era, 1989 production, and the 2005 conspicuity-period, are all equipped with Keystone Portloc outlet gates, smooth-style roof hatches, and Stuki HS-7 snubbers on the trucks. The 1989 and 2005 editions display the Norfolk Southern logo.



All of Tangent's 4750 models in this release come with 100-ton Barber S-2 roller-bearing trucks with 36" machined meal wheels, and either Brenco or Timken rotating bearing caps. Info: www.tangentscalemodels.com

First up is a 1973 version stenciled *Grain Handling Only*. Unique details include ribbed roof hatches, Keystone

Portloc outlets gates, slot-style jacking pads, and an ACI label.

This version represents 4750 cu. ft. cars built at Roanoke in 1979. Like the prototype, Tangent's HO scale version

has smooth-style roof hatches, open-circle jacking pads, double-style COTS boxes, and a mix of Miner Selflock and Keystone

Portloc outlet gates. A similarly equipped painted but unlettered model is also available from Tangent.

Models representing 1986 Clayton-era, 1989 production, and the 2005 conspicuity-period, are all equipped with



Walthers is booking preorders for a retooled 60' high-cube Plate F boxcar with horizontal side posts.



Road names will be GATX/BKTY (Missouri-Kansas-Texas Railroad, Union Pacific), Union Pacific/BKTY, GATX/LRS (Laurinburg & Southern Railroad), Ferromex, and two TBOX schemes.



Scheduled for release next winter, the Mainline series HO scale model features a cushioned underframe with

correct brake gear and angle-mounted reservoir, separately applied door latch bars, and a mix of both X and diagonal roof panels. All versions will come with 100-ton roller-bearing trucks with 36" metal wheels.



Also coming next winter is another production run of Walthers Proto

series Greenbrier 89' 110-ton flatcar. The HO scale model is based on a prototype designed for heavy duty service, including hauling military vehicles, containers and other large loads such as wind turbine components.



Road names will be AOKX (Arkansas-Oklahoma), LIMC (Lake Michigan &

Indiana Railroad), and three TTX schemes including one designated for military use only.



Special details on the Proto series model include dual tie-down chain channels, positionable container pedestals (for two 40' or four 20' containers), separately applied nonworking cable straps and

strap brackets, wire grab irons, a detailed underframe with separate brake rods and piping, and 100-ton roller-bearing trucks with 36" machined metal wheelsets. The 89' car requires a minimum track radius of 24".

Info: www.walthers.com



ZYX Creative is taking preorders for the ARI 53'-9" coil car in HO scale. The model will consist of a high resolution 3D-printed

resin body on a 3-printed PLA underbody. The model will include Delrin 100-ton trucks with 36" metal wheels, Kadee couplers, and separately applied details. A limited number of ready-to-run cars will be offered in single and 3-packs, and an undecorated kit with decals will be available without trucks and couplers. Estimated availability is November 2025.

Info: www.zyxcreative.com

Did you see this article?

in the **SEPTEMBER 2025 MRH RUNNING EXTRA!**



Shortline tailor-made for modelers

Get full eBook now ▶

← click here



Each eBook has 75-100 pages

**RUNNING
EXTRA**

N SCALE PRODUCT NEWS



R. Bale

EMD GP40 DIESEL LOCOMOTIVE

In late 1965 EMD introduced a new line of locomotives powered by its 16-cylinder 645-series prime mover. Riding comfortably on Blomberg four-axle trucks, the 3000hp turbo-charged locomotive was christened GP40. Although similar in appearance to its GP35 predecessor, the new GP40 was distinguished by three large 48" radiator fans at the rear of the locomotive body. EMD produced 1,225 GP40s including 60 units built with high-short-hoods and dual control stands for the Norfolk & Western Railway. Concurrent with the introduction of the GP40, a non-turbocharged version, built on the same chassis and using the same body with only two radiator fans, was introduced as the 2000hp GP38. It also carried a considerably lower price tag. On January 1, 1972, the GP40 was discontinued and replaced by the GP40-2, which has a modular electrical system and a few minor exterior changes.



Atlas has recently released several new N scale models to its dealer network including this GP40 diesel electric locomotive. Road names include CP Rail, CSX



Features on the N scale model include gold-white LED directional lighting, walkway safety tread, and dynamic brakes (as appropriate by railroad). Atlas Silver series models of the GP40 are DCC/DCC ready. Gold series models will have a factory installed DCC/ESU LokSound decoder.



Bakelite Plastics, GACX-Petrothene UCI, Santa Fe, Wisconsin Southern, and WR Grace are among the colorful road names and decorating schemes available on an N scale

3,500 cu. ft. Dry-Flo triple bay covered hopper recently released by Atlas. Features include a separately etched brake platform and other brake detail applied to the injection molded plastic body.



The model comes with 70-ton ASF Ride-Control trucks with 33" metal wheels.



This N scale bulkhead flat car is now available from Atlas in five different road names including Gulf Mobile & Ohio, Union Pacific, Burlington, and two Burlington Northern schemes.



Features include a heavy diecast frame, lattice bulkheads, and a well-detailed deck.



Atlas's N scale version of a 4,000 cu. ft. covered hopper features BLMA 100-ton trucks with BLMA 36" metal wheels. An additional feature of the 10-hatch triple bay outside-braced model is a chemically-etched brake platform and roof walk.



Road names are Santa Fe, Monon, CSX, and Kansas City Southern. All Atlas N scale models come with AccuMate knuckle couplers. Check with a dealer as some of the models in this report are already sold out at the factory.

Info: www.atlasrr.com



Jacksonville Terminal Company has released several different paint

schemes of the NSC NWF13 class 53' 17-post well car in N scale. All lettered for DTTX, the cars reflect different decorating schemes used by TTX over the years, including a large red TTX logo, a small red TTX logo, and silver or yellow stripes.

Info: jtcmodeltrains.com



Micro-Trains Line has released several new N scale ready-to-run models including this 65' mill gondola decorated for Conrail.



This 4-pack from Micro-Trains represents aging cars the Santa Fe placed in Maintenance of Way service in the 1980s.



Originally built for New York Central, this triple bay covered hopper was redecorated for Conrail following the merger of NYC and the Pennsylvania Railroad in 1968.



Micro-Trains has released an N scale version of a Southern Pacific flatcar equipped with trailer hitches and wheel guides for TOFC (Trailer-On-Flat-Car) service. The model is offered as a 2-pack including two SP trailers. Info: Contact a dealer

Z SCALE PRODUCT NEWS



Atlas has announced they will be producing the Gunderson Multi-Max auto rack in Z scale. 89' long, the Multi-Max can convert from a Bi-Level to a Tri-Level

auto rack without removing the decks. The newly tooled model will include truck mounted operating couplers and newly tooled trucks with blackened metal wheelsets.



While the rack carries the road name of the railroad that owns it, they ride on flatcars that are owned and lettered for TTX, either TTGX or CTTX. Road

names on the racks are BNSF, CSX, Ferromex, KCS, TTX only, and Union Pacific. Preorders for this model close on September 17, 2025.

Info: shop.atlasrr.com

STRUCTURES AND SCENIC SUPPLIES



Conowingo Models has released a new laser-cut kit in N scale, the Grey Street Company House. Based on a catalog home from the early 1900s, the kit includes a 3D-printed base and Tichy doors, windows, and chimney.

Info: conowingomodels.com



Fans of the movie *The Great Race* (1965) will enjoy two recent releases from **Inter-Action Hobbies**. Professor Fake's Phantom Submersible (names may be changed to protect the copyrighted...) is a 3D-printed HO

scale kit and includes Professor Fake and Max figures. The finished model measures 1.8" wide x 2.9" long x 1.97" tall (2.33" with periscope extended).



Professor Fake's Rocket Sled is available in HO, S, and O scales. The unpowered kit is 3D-printed in resin, with laser-cut braces and steps. Seated and standing figures of Professor Fake and Max are included. The HO scale vehicle is 0.75"

wide x 2.5" long x 1.1" tall. The S scale vehicle is 1.0" x 3.4" x 1.5" and the O scale vehicle is 1.36" x 4.5" x 2.0.

Info: www.interactionhobbies.com

Monster Modelworks has released an HO scale craftsman-style flat kit for a four-story industrial building. With creative signage, the highly detailed model can serve as almost any industrial warehouse or manufacturing facility.



The structure is 9.5" tall and has a footprint of 11.25" x 1.25'. Components include 3-D laser-engraved brick siding, concrete coping and poured concrete form overlays. The detailed fire escapes, security bars, and wall anchors are all laser-cut. Painting and assembly are required.



Monster Modelworks has also released 90', 110' and 130' pit flooring for Walther's HO scale turntables.

Info: www.larkspurlaserart.com



A 1950 Studebaker Champion Starlight coupe is now available from **Oxford Die Cast**. Among the HO scale model's features are the unique wrap-

around rear window and wide white wall tires.

Info: www.walthers.com



Summit USA has released a new HO scale kit of a Tractor Supply Co. store. An American chain store that sells home improvement, agricultural, and animal care equipment and

supplies, with over 2,000 stores across the country. The model includes laser-cut white and clear acrylic, self-adhesive micro-plywood, Plastruct corrugated roofing, Evergreen styrene strips, and necessary support materials.

Available as both a full structure and a backdrop model, the full structure measures 16-1/4" x 11-1/4" x 3-3/4" and the backdrop model measures 16-1/4" x 3-3/16" x 3-3/4".

Vehicles and parking lot are not included.

Info: www.summit-customcuts.com

Walthers has released a group of HO scale tank trailers decorated for eleven different chemical, food, and petroleum industry carriers. The well-detailed trailers feature separate ladders, piping, walkway platforms, and landing gear.



Chemical industry trailers include ChemGo, Pehoski Transport, and North Island.



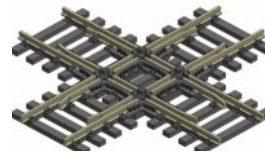
Food grade trailers are available decorated for Dairy Fresh - Brook Hill Farm Dairy, Golden Kernel Corn Syrup, and Gourmet Chocolate Co.



Petroleum industry trailers include Interstate Fuel & Oil, Winner's Circle Petro, and North American Ethanol.



Three unlettered tank trailers are also available.



Walthers is quoting a spring 2026 availability date for a new 90° Code 83 track crossing. Suitable for DC or DCC layouts, the nickel silver crossing features thin-profile brown plastic ties molded in

wood grain with spikes and a tie plate in each tie.



Modeling a wind turbine operation will get easier next winter when Walthers is scheduled to release a 30" tall three-blade turbine, a single turbine blade (designed as a load for Walthers Proto series 89' Greenbrier 110-ton flatcar – sold separately), and six turbine technician figures.

Info: www.walthers.com



ELECTRONICS

Iowa Scaled Engineering has announced the SimpleSig MSS Block Signal Advanced. Coming soon in both the Home (includes one ATOM DCC block detector) and Modules (includes two ATOM DCC block detectors) versions, the Block Signal Advanced is designed for adding basic ABS block

NEW DECALS, SIGNS & FINISHING PRODUCTS | 20



signals at a track block boundary. More capable than the Block Signal Basic, the Advanced can display configurable aspects on single or double-headed signals in each direction. It is fully compatible with the Modular Signal System standard.

Info: www.iascaled.com

NEW DECALS, SIGNS AND FINISHING PRODUCTS



Chicago Link Decals is selling three new HO scale lettering sets including a thoroughly-researched set for Seaboard System covered hopper cars. Printed by Cartograf, the

Seaboard System Beige sheet (CLD-204) is suitable for accurately relettering Tangent PS2929s and PS4750s, and Accurail and Athearn ACF 4600s covered hoppers.

Also new is Pullman Patches (CKD-205) which features a unique stencil for PS4750s operated by PLCK, PTLX, and ITLX. Completing the list of three new carefully detailed decal sheets is Final Mile 1 (CLD-303) which includes some hobo and car knocker markings, QR codes, and barcode stickers for a variety of cars including those operated by Seaboard System.

Info: chicagolinkdecals@yahoo.com

DISCLAIMER

The opinions expressed in this column are those of the writer and do not necessarily reflect the opinion of Model Railroad Hobbyist or its sponsors. Every effort is made to provide our readers with accurate and responsible news and information, however, neither Model Railroad Hobbyist or the writer of this column can be held responsible for any inaccuracies or typographical errors that may inadvertently appear in this column.

Floquil/PollyScale stash running out?



MRH has mapped the old familiar colors to new readily-available acrylic paints.



MRH's Floquil / PollyScale Paint Equivalents Conversion Chart - 1

Floquil / PollyScale Color Name	Model Number	MRH Color	MRH Color	MRH Color
Primer Grey	MRH 4002	MRH 71000	10-10	
Engine Black	MRH 4008	MRH 71000	10-01	
Black Primer	MRH 4010	MRH 71007	10-01B	
Grey Black	MRH 4012	MRH 71007	10-01*	
Black Primer	MRH 4014	MRH 71007	10-01	
Black Primer	MRH 4016	MRH 71007	10-01	
Black Primer	MRH 4018	MRH 71007	10-01	
Black Primer	MRH 4020	MRH 71007	10-01	
Black Primer	MRH 4022	MRH 71007	10-01	
Black Primer	MRH 4024	MRH 71007	10-01	
Black Primer	MRH 4026	MRH 71007	10-01	
Black Primer	MRH 4028	MRH 71007	10-01	
Black Primer	MRH 4030	MRH 71007	10-01	
Black Primer	MRH 4032	MRH 71007	10-01	
Black Primer	MRH 4034	MRH 71007	10-01	
Black Primer	MRH 4036	MRH 71007	10-01	
Black Primer	MRH 4038	MRH 71007	10-01	
Black Primer	MRH 4040	MRH 71007	10-01	
Black Primer	MRH 4042	MRH 71007	10-01	
Black Primer	MRH 4044	MRH 71007	10-01	
Black Primer	MRH 4046	MRH 71007	10-01	
Black Primer	MRH 4048	MRH 71007	10-01	
Black Primer	MRH 4050	MRH 71007	10-01	
Black Primer	MRH 4052	MRH 71007	10-01	
Black Primer	MRH 4054	MRH 71007	10-01	
Black Primer	MRH 4056	MRH 71007	10-01	
Black Primer	MRH 4058	MRH 71007	10-01	
Black Primer	MRH 4060	MRH 71007	10-01	
Black Primer	MRH 4062	MRH 71007	10-01	
Black Primer	MRH 4064	MRH 71007	10-01	
Black Primer	MRH 4066	MRH 71007	10-01	
Black Primer	MRH 4068	MRH 71007	10-01	
Black Primer	MRH 4070	MRH 71007	10-01	
Black Primer	MRH 4072	MRH 71007	10-01	
Black Primer	MRH 4074	MRH 71007	10-01	
Black Primer	MRH 4076	MRH 71007	10-01	
Black Primer	MRH 4078	MRH 71007	10-01	
Black Primer	MRH 4080	MRH 71007	10-01	
Black Primer	MRH 4082	MRH 71007	10-01	
Black Primer	MRH 4084	MRH 71007	10-01	
Black Primer	MRH 4086	MRH 71007	10-01	
Black Primer	MRH 4088	MRH 71007	10-01	
Black Primer	MRH 4090	MRH 71007	10-01	
Black Primer	MRH 4092	MRH 71007	10-01	
Black Primer	MRH 4094	MRH 71007	10-01	
Black Primer	MRH 4096	MRH 71007	10-01	
Black Primer	MRH 4098	MRH 71007	10-01	
Black Primer	MRH 4100	MRH 71007	10-01	
Black Primer	MRH 4102	MRH 71007	10-01	
Black Primer	MRH 4104	MRH 71007	10-01	
Black Primer	MRH 4106	MRH 71007	10-01	
Black Primer	MRH 4108	MRH 71007	10-01	
Black Primer	MRH 4110	MRH 71007	10-01	
Black Primer	MRH 4112	MRH 71007	10-01	
Black Primer	MRH 4114	MRH 71007	10-01	
Black Primer	MRH 4116	MRH 71007	10-01	
Black Primer	MRH 4118	MRH 71007	10-01	
Black Primer	MRH 4120	MRH 71007	10-01	
Black Primer	MRH 4122	MRH 71007	10-01	
Black Primer	MRH 4124	MRH 71007	10-01	
Black Primer	MRH 4126	MRH 71007	10-01	
Black Primer	MRH 4128	MRH 71007	10-01	
Black Primer	MRH 4130	MRH 71007	10-01	
Black Primer	MRH 4132	MRH 71007	10-01	
Black Primer	MRH 4134	MRH 71007	10-01	
Black Primer	MRH 4136	MRH 71007	10-01	
Black Primer	MRH 4138	MRH 71007	10-01	
Black Primer	MRH 4140	MRH 71007	10-01	
Black Primer	MRH 4142	MRH 71007	10-01	
Black Primer	MRH 4144	MRH 71007	10-01	
Black Primer	MRH 4146	MRH 71007	10-01	
Black Primer	MRH 4148	MRH 71007	10-01	
Black Primer	MRH 4150	MRH 71007	10-01	
Black Primer	MRH 4152	MRH 71007	10-01	
Black Primer	MRH 4154	MRH 71007	10-01	
Black Primer	MRH 4156	MRH 71007	10-01	
Black Primer	MRH 4158	MRH 71007	10-01	
Black Primer	MRH 4160	MRH 71007	10-01	
Black Primer	MRH 4162	MRH 71007	10-01	
Black Primer	MRH 4164	MRH 71007	10-01	
Black Primer	MRH 4166	MRH 71007	10-01	
Black Primer	MRH 4168	MRH 71007	10-01	
Black Primer	MRH 4170	MRH 71007	10-01	
Black Primer	MRH 4172	MRH 71007	10-01	
Black Primer	MRH 4174	MRH 71007	10-01	
Black Primer	MRH 4176	MRH 71007	10-01	
Black Primer	MRH 4178	MRH 71007	10-01	
Black Primer	MRH 4180	MRH 71007	10-01	
Black Primer	MRH 4182	MRH 71007	10-01	
Black Primer	MRH 4184	MRH 71007	10-01	
Black Primer	MRH 4186	MRH 71007	10-01	
Black Primer	MRH 4188	MRH 71007	10-01	
Black Primer	MRH 4190	MRH 71007	10-01	
Black Primer	MRH 4192	MRH 71007	10-01	
Black Primer	MRH 4194	MRH 71007	10-01	
Black Primer	MRH 4196	MRH 71007	10-01	
Black Primer	MRH 4198	MRH 71007	10-01	
Black Primer	MRH 4200	MRH 71007	10-01	
Black Primer	MRH 4202	MRH 71007	10-01	
Black Primer	MRH 4204	MRH 71007	10-01	
Black Primer	MRH 4206	MRH 71007	10-01	
Black Primer	MRH 4208	MRH 71007	10-01	
Black Primer	MRH 4210	MRH 71007	10-01	
Black Primer	MRH 4212	MRH 71007	10-01	
Black Primer	MRH 4214	MRH 71007	10-01	
Black Primer	MRH 4216	MRH 71007	10-01	
Black Primer	MRH 4218	MRH 71007	10-01	
Black Primer	MRH 4220	MRH 71007	10-01	
Black Primer	MRH 4222	MRH 71007	10-01	
Black Primer	MRH 4224	MRH 71007	10-01	
Black Primer	MRH 4226	MRH 71007	10-01	
Black Primer	MRH 4228	MRH 71007	10-01	
Black Primer	MRH 4230	MRH 71007	10-01	
Black Primer	MRH 4232	MRH 71007	10-01	
Black Primer	MRH 4234	MRH 71007	10-01	
Black Primer	MRH 4236	MRH 71007	10-01	
Black Primer	MRH 4238	MRH 71007	10-01	
Black Primer	MRH 4240	MRH 71007	10-01	
Black Primer	MRH 4242	MRH 71007	10-01	
Black Primer	MRH 4244	MRH 71007	10-01	
Black Primer	MRH 4246	MRH 71007	10-01	
Black Primer	MRH 4248	MRH 71007	10-01	
Black Primer	MRH 4250	MRH 71007	10-01	
Black Primer	MRH 4252	MRH 71007	10-01	
Black Primer	MRH 4254	MRH 71007	10-01	
Black Primer	MRH 4256	MRH 71007	10-01	
Black Primer	MRH 4258	MRH 71007	10-01	
Black Primer	MRH 4260	MRH 71007	10-01	
Black Primer	MRH 4262	MRH 71007	10-01	
Black Primer	MRH 4264	MRH 71007	10-01	
Black Primer	MRH 4266	MRH 71007	10-01	
Black Primer	MRH 4268	MRH 71007	10-01	
Black Primer	MRH 4270	MRH 71007	10-01	
Black Primer	MRH 4272	MRH 71007	10-01	
Black Primer	MRH 4274	MRH 71007	10-01	
Black Primer	MRH 4276	MRH 71007	10-01	
Black Primer	MRH 4278	MRH 71007	10-01	
Black Primer	MRH 4280	MRH 71007	10-01	
Black Primer	MRH 4282	MRH 71007	10-01	
Black Primer	MRH 4284	MRH 71007	10-01	
Black Primer	MRH 4286	MRH 71007	10-01	
Black Primer	MRH 4288	MRH 71007	10-01	
Black Primer	MRH 4290	MRH 71007	10-01	
Black Primer	MRH 4292	MRH 71007	10-01	
Black Primer	MRH 4294	MRH 71007	10-01	
Black Primer	MRH 4296	MRH 71007	10-01	
Black Primer	MRH 4298	MRH 71007	10-01	
Black Primer	MRH 4300	MRH 71007	10-01	
Black Primer	MRH 4302	MRH 71007	10-01	
Black Primer	MRH 4304	MRH 71007	10-01	
Black Primer	MRH 4306	MRH 71007	10-01	
Black Primer	MRH 4308	MRH 71007	10-01	
Black Primer	MRH 4310	MRH 71007	10-01	
Black Primer	MRH 4312	MRH 71007	10-01	
Black Primer	MRH 4314	MRH 71007	10-01	
Black Primer	MRH 4316	MRH 71007	10-01	
Black Primer	MRH 4318	MRH 71007	10-01	
Black Primer	MRH 4320	MRH 71007	10-01	
Black Primer	MRH 4322	MRH 71007	10-01	
Black Primer	MRH 4324	MRH 71007	10-01	
Black Primer	MRH 4326	MRH 71007	10-01	
Black Primer	MRH 4328	MRH 71007	10-01	
Black Primer	MRH 4330	MRH 71007	10-01	
Black Primer	MRH 4332	MRH 71007	10-01	
Black Primer	MRH 4334	MRH 71007	10-01	
Black Primer	MRH 4336	MRH 71007	10-01	
Black Primer	MRH 4338	MRH 71007	10-01	
Black Primer	MRH 4340	MRH 71007	10-01	
Black Primer	MRH 4342	MRH 71007	10-01	
Black Primer	MRH 4344	MRH 71007	10-01	
Black Primer	MRH 4346	MRH 71007	10-01	
Black Primer	MRH 4348	MRH 71007	10-01	
Black Primer	MRH 4350	MRH 71007	10-01	
Black Primer	MRH 4352	MRH 71007	10-01	
Black Primer	MRH 4354	MRH 71007	10-01	
Black Primer	MRH 4356	MRH 71007	10-01	
Black Primer	MRH 4358	MRH 71007	10-01	
Black Primer	MRH 4360	MRH 71007	10-01	
Black Primer	MRH 4362	MRH 71007	10-01	
Black Primer	MRH 4364	MRH 71007	10-01	
Black Primer	MRH 4366	MRH 71007	10-01	
Black Primer	MRH 4368	MRH 71007	10-01	
Black Primer	MRH 4370	MRH 71007	10-01	
Black Primer	MRH 4372	MRH 71007	10-01	
Black Primer	MRH 4374	MRH 71007	10-01	
Black Primer	MRH 4376	MRH 71007	10-01	
Black Primer	MRH 4378	MRH 71007	10-01	
Black Primer	MRH 4380	MRH 71007	10-01	
Black Primer	MRH 4382	MRH 71007	10-01	
Black Primer	MRH 4384	MRH 71007	10-01	
Black Primer	MRH 4386	MRH 71007	10-01	
Black Primer	MRH 4388	MRH 71007	10-01	
Black Primer	MRH 4390	MRH 71007	10-01	
Black Primer	MRH 4392	MRH 71007	10-01	
Black Primer	MRH 4394	MRH 71007	10-01	
Black Primer	MRH 4396	MRH 71007	10-01	
Black Primer	MRH 4398	MRH 71007	10-01	
Black Primer	MRH 4400	MRH 71007	10-01	
Black Primer	MRH 4402	MRH 71007	10-01	
Black Primer	MRH 4404	MRH 71007	10-01	
Black Primer	MRH 4406	MRH 71007	10-01	
Black Primer	MRH 4408	MRH 71007	10-01	
Black Primer	MRH 4410	MRH 71007	10-01	
Black Primer	MRH 4412	MRH 71007	10-01	
Black Primer	MRH 4414	MRH 71007	10-01	
Black Primer	MRH 4416	MRH 71007	10-01	
Black Primer	MRH 4418	MRH 71007	10-01	
Black Primer	MRH 4420	MRH 71007	10-01	
Black Primer	MRH 4422	MRH 71007	10-01	
Black Primer	MRH 4424	MRH 71007	10-01	
Black Primer	MRH 4426	MRH 71007	10-01	
Black Primer	MRH 4428	MRH 71007	10-01	
Black Primer	MRH 4430	MRH 71007	10-01	
Black Primer	MRH 4432	MRH 71007	10-01	
Black Primer	MRH 4434	MRH 71007	10-01	
Black Primer	MRH 4436	MRH 71007	10-01	
Black Primer	MRH 4438	MRH 71007	10-01	
Black Primer	MRH 4440	MRH 71007	10-01	
Black Primer	MRH 4442	MRH 71007	10-01	
Black Primer	MRH 4444	MRH 71007	10-01	
Black Primer	MRH 4446	MRH 71007	10-01	
Black Primer	MRH 4448	MRH 71007	10-01	
Black Primer	MRH 4450	MRH 71007	10-01	
Black Primer	MRH 4452	MRH 71007	10-01	
Black Primer	MRH 4454	MRH 71007	10-01	
Black Primer	MRH 4456	MRH 71007	10-01	
Black Primer	MRH 4458	MRH 71007	10-01	
Black Primer	MRH 4460	MRH 71007	10-01	
Black Primer	MRH 4462	MRH 71007	10-01	
Black Primer	MRH 4464	MRH 71007	10-01	
Black Primer	MRH 4466	MRH 71007	10-01	
Black Primer	MRH 4468	MRH 71007	10-01	
Black Primer	MRH 4470	MRH 71007	10-01	
Black Primer	MRH 4472	MRH 71007	10-01	
Black Primer	MRH 4474	MRH 71007	10-01	
Black Primer	MRH 4476	MRH 71007	10-0	

! BRIEFLY NOTED AT PRESS TIME ...

Bachmann Trains has released a run of HO scale Trinity 5161 cu. ft. 3-bay covered hoppers. Two road numbers are available for BNSF, CSX, Canadian Pacific/Soo, and Norfolk Southern ...

Bowser has announced a refreshed version of the HO scale 100-ton 3-bay open hopper featuring separately applied wire details, air lines, improved brake wheels, and brand new trucks. Models decorated for B&LE, B&O, CN, Conrail, D&H, Frisco, N&W Bicentennial, N&W Claytor, NS, Pecos Valley Southern, PC, Pittsburg & Shawmut, PPLX, Reading, Seaboard, SP, Southern, and UP will be included in the run ...

Three new products in HO scale have been announced by **Broadway Limited**, a brass-hybrid UP early Challenger, Instruction/Exhibit Cars based off the modified coach tooling used for the 1947 American Freedom Train, and two fantasy Streamlined Hudson paint schemes using the ATSF Blue Goose tooling, a 1947 American Freedom Train Scheme and the ATSF Valley Flyer livery ...

Trainworx has a new run of N scale Kenworth W90, W900, T80, and T800 and Peterbuilt 379 log trucks. Available in a variety of colors or decorated for logging companies, the trucks ride on three or four axles with two axle trailers that can be carried on the back of truck straddling the front log bunks like the prototype ... ■

Did you see this article?

in the **SEPTEMBER 2025 MRH RUNNING EXTRA!**



Accessory power supplies for under \$5

Get full eBook now ▶

← click here



Each eBook has 75-100 pages
MRH RUNNING EXTRA

Get more articles like this

GIVE IT A LIKE



SELECTED EVENTS



Model Railroad Hobbyist | September 2025



SEPTEMBER

Please submit your event information, including website, to [https://model-railroad-hobbyist.com/contact/News-event - product announcement](https://model-railroad-hobbyist.com/contact/News-event-product-announcement)

Ongoing 2025

ONLINE, Zoom & YouTube, Wednesdays at 7pm Eastern. New Tracks Modeling Live Weekly

Info: newtracksmodeling.com

YouTube: www.youtube.com/channel/UCMAVhPb5pjdkAYTdXLceJA

ONLINE, Facebook & YouTube, dates vary, see Facebook page. "NMRax" organized by Gordy Robinson, Martyn Jenkins, Speed Muller, Jordan Kramer.

Info: www.facebook.com/groups/nmragroup

ONLINE, Zoom, Second Tuesdays, 8pm Eastern. "Off the Beaten Track" featuring Narrow Gauge layouts, clinics, and manufacturers.

Info: groups.io/g/NNG



REGISTER
(free)

[INDEX](#)

[TABLE OF CONTENTS](#)

[MRHMAG.COM](#)

[INDEX](#)

[TABLE OF CONTENTS](#)

ILLINOIS, CALEDONIA, Monthly Meetings of the Rock River Valley Division, Midwest Region. Paulson's Agriculture Museum of Argyle, 6950 Belvidere Rd. See Events page on website for dates.

Info: rrvd-nmra.com

September - October 2025

AUSTRALIA, QUEENSLAND, TOOWOOMBA, September 13, 20, 27, 2025. 2025 Carnival of Trains Open House, sponsored by the Toowoomba Model Railway Club, Inc. Toowoomba Showgrounds, Glenvale Road.

Info: www.facebook.com/toowoombamodelrailwayclub

CANADA, BRITISH COLUMBIA, SIDNEY, September 21, 2025. 33rd Annual Victoria Model Train Show. Mary Winspear Centre, 2243 Beacon Avenue.

Info: victoriatrainshow@gmail.com

CANADA, ONTARIO, BURLINGTON, October 17-19, 2025. Real Rails 2025 Convention, sponsored by the Canadian Pacific Historical Association. Holiday Inn and Candle Wood Suites, 3060 South Service Road.

Info: www.cptracks.ca/realrails2025.html

ALABAMA, GADSDEN, September 20, 2025. Coosa Valley Model Railroad Association 2nd Annual Fall Train Show. Mary G Hardin Center for Cultural Arts, 501 Broad St.

Info: www.facebook.com/coosavalleymodelrailroad

COLORADO, ESTES PARK, September 20, 2025. Rails in the Rockies XXVIII, Estes Park Events Complex, 1125 Rooftop Way.

Info: railsintherockies.org

COLORADO, GREELEY, September 27-28, 2025. Colorado Rail Proto Meet, in association with the Colorado Model Railroad Museum, featuring the HomeShops Freelance Forum and the Narrow Gauge Gathering. Island Grove Event Center, 421 N 15th Ave.

Info: corpm.org

FLORIDA, OCALA, October 9-11, 2025. Sunshine Region 2025 Annual Convention. Ocala Hilton, 3600 Southwest 36th Ave.

Info: www.nmrasunshineregion.org/2025-annual-convention

FLORIDA, THE VILLAGES, September 20-21, 2025. Summer Expo Model Train Sale & Show, Savannah Center, 1545 N Buena Vista Blvd.

Info: www.thevillagesmodeltrainclub.com

ILLINOIS, NAPERVILLE, October 16-18, 2025. Railroad Prototype Modelers Conference - RPM Naperville 2025. Northern Illinois University Conference Center, Northern Illinois University.

Info: www.rpmconference.com

INDIANA, FORT WAYNE, October 18, 2025. Three Rivers Division Train Show and Swap Meet, Allen County Ware Memorial Coliseum, 4000 Parnell Avenue.

Info: www.nmra.org/events/three-rivers-division-nmra-train-show

INDIANA, INDIANAPOLIS, October 4, 2025. Indianapolis Train Show @ Garfield Park. Garfield Park Burello Family Center, 2345 Pagoda Dr.

Info: www.naptownrr.org/shows

MINNESOTA, WOODBURY, October 18, 2025. Newport Model Railroad Train Flea Market, sponsored by the Greater East Area Model RR Club. Woodbury High School, 2665 Woodlane Dr.

Info: newportclub.us

MISSOURI, KIRKWOOD (St Louis), October 11-12, 2025. 34th Annual Greater St. Louis Metro Area Train Show, sponsored by the Mississippi Valley N Scalpers LLC.. St. Louis Community College-Meramac Gym, 11333 Big Bend Road.

Info: mvns.club/annualshow.php

MISSOURI, SPRINGFIELD, September 19-20, 2025. Ozarks Model Railroad Association 2025 Train Show. Ozark Empire Fairgrounds, 3001 Grant Ave.

Info: www.facebook.com/events/1337256877719034

SELECTED EVENTS | 25

NEW YORK, HEMLOCK, September 20-21, 2025. 5th Annual Hemlock Train Show. Hemlock Fairgrounds, AG Expo Building, 7370 Water St.

Info: www.fctt-hirailers.com

OHIO, CAMBRIDGE, October 26, 2025. Seventh Annual Buckeye Division (Division 6, MCR) Train Show. Pritchard Laughlin Center, 7033 Glenn Hwy.

Info: div6-mcr-nmra.org/trainshow.html

OHIO, MIDDLEBURG HEIGHTS (Berea), October 4-5, 2025. 51st Annual Great Berea Train Show, hosted by the North Coast Division, Mid-Central Region, NMRA. Cuyahoga County Fairgrounds, 19201 Bagley Rd.

Info: thegreatbreatrainshow.org

OHIO, WEST CHESTER (Cincinnati), October 11-12, 2025. 57th Annual Division 7 NMRA Fall Train Show. Lakota West High School, 8940 Union Centre Blvd.

Info: cincy-div7.org

OREGON, PORTLAND, October 25, 2025. 6th Bridgetown Railroad Prototype Modelers Meet. Holiday Inn Airport – Portland (I-205), 8439 NE Columbia Blvd.

Info: www.facebook.com/groups/2001136043323501

PENNSYLVANIA, EASTON, October 5, 2025. 47th Annual Lehigh Valley Regional Train Show & Expo. Charles Chrin Community Center 4100 Green Pond Road.

Info: www.lehighlines.org/chrin-flyer.html

PENNSYLVANIA, KING OF PRUSSIA, October 16-19, 2025. Philly Express, 2025 NMRA/MER Convention. Crowne Plaza Hotel, 260 Mall Blvd.

Info: phillyexpress.org

TENNESSEE, GATLINBURG, September 17-20, 2025. Smoky Mountain Rails Convention, sponsored by the Southeastern Region of the NMRA. Glenstone Lodge, 504 Airport Rd.

Info: 2025serconvention.org

SELECTED EVENTS | 26

WASHINGTON, BATTLE GROUND, September 27, 2025. Southwest Washington Model Railroaders Great Train Swap Meet. Battle Ground High School, 250 N Parkway.

Info: larry.sprnkel@gmail.com

WASHINGTON, LYNDEN, October 4-5, 2025. 40th Anniversary Lynden Lions Club Model Train & Toy Show. Northwest Washington Fairgrounds, Henry Jansen Agricultural Building, 1775 Front St.

Info: lyndentrainshow.com

WASHINGTON, SPOKANE, October 12, 2025. River City Modelers Fall Model Train Show. Spokane Fair & Expo Center, Buildings A, B, & C. Gate G, 404 N Havana.

Info: www.rivercitymodelers.org/rcm-train-show-info.html

Future 2025-26 by location

ARIZONA, TUCSON, November 9, 2025. All Gauges Tucson Model Train Train Show and Swap Meet. Gadsen Pacific Division Toy Train Operating Museum, 3975 N. Miller Ave.

Info: gadsdenpacific.org/train-shows

ARIZONA, TUCSON/PHOENIX/PRESCOTT/FLAGSTAFF, November 15-16, 2025. 2nd Annual Cactus Crawl Layout Tour, hosted by the Arizona Division, PSR, NMRA.

Info: www.azdiv-nmra.org

CALIFORNIA, SACRAMENTO, November 8-9, 2025. International Railfair. Cal Expo, Building C, 1600 Exposition Blvd.

Info: internationalrailfair.com

COLORADO, LONGMONT, December 12-14, 2025. 48th Annual Boulder Model Railroad Club Train EXPO. Boulder County Fairgrounds Exposition Hall, 9595 Nelson Road.

Info: www.bmrconline.org

CONNECTICUT, VERNON, November 9, 2025. Vernon Model Train Show, sponsored by the Rockville High

Info: www.facebook.com/profile.php?id=61551588057395

SELECTED EVENTS | 27

INDIANA, DANVILLE, November 22, 2025. CID-NMRA Danville Train Show. Hendricks County Fairgrounds, 1900 E. Main Street. Info: www.cidnmra.org

MASSACHUSETTS, WEST SPRINGFIELD, January 24-25, 2026. Amherst Railway Society Railroad Hobby Show. Better Living Center, Young, Stroh, and Mallary Buildings at The Eastern States Exposition Fairgrounds – Home of the Big E. 1305 Memorial Avenue. Info: www.railroadhobbyshow.com/index.php

MICHIGAN, BELLEVILLE, November 23, 2025. Southeast Michigan Model Railroad Show and Sale, sponsored by Rails on Wheels and Division 6, NCR, NMRA. Wayne County Community College's Ted Scott Campus, 9555 Haggerty Rd. ½ mile north of I-94, exit 192. Info: www.railsonwheels.com

NEW JERSEY, NORTH HALEDON, November 28-30, December 6-7, 13-14, 2025. Garden State Model Railroad Club Annual Fall Show. 575 High Mountain Rd. Info: gardenstatetrainclub.org/modelrailroadshow

NEW YORK, SYRACUSE, November 1-2, 2025. 50th Great New York State Model Train Fair, sponsored by the CNY Chapter, National Railway Historical Society. NYS Fair Exposition Center, 581 State Fair Blvd. Info: www.modeltrainfair.com

OKLAHOMA, OKLAHOMA CITY, November 15-16, 2025. OKC Train Show. Bennett Event Center, Oklahoma State Fairgrounds, 2101 Gordon Cooper Blvd. Info: www.okctrainshow.com

TEXAS, PASADENA (Houston), February 21, 2026. Greater Houston Train Show, sponsored by the San Jacinto Model Railroad Club. Pasadena Convention Center, 902 Fairmount Parkway. Info: sanjacmodeltrains.org

SELECTED EVENTS | 28

TEXAS, PEARLAND (Houston), November 15-16, 2025. 2025 Houston Area Model Train Show. Knights of Columbus Hall, 2320 Hatfield Rd. Info: houstontrak.org

UTAH, SALT LAKE CITY, November 7-8, 2025. 37th Intermountain Train Expo, hosted by the Northern Utah Division. Stadler USA, 5880 West 150 South. Info: www.intermountaintrainexpo.com

WASHINGTON, KENT, November 8, 2025. Boeing Employees Model Railroad Club Annual Swap Meet. Kent Commons Community Center, 525 4th Avenue North. Info: seattleandnorthcascades@gmail.com

WISCONSIN, MILWAUKEE, November 1-2, 2025. Trainfest – America's Largest Operating Model Railroad Show. Baird Center, 400 W Wisconsin Ave. Info: www.trainfest.com/trainfest.html ■



Did you see this article?

in the **SEPTEMBER 2025 MRH RUNNING EXTRA!**



Ballasting track with
a purpose

Get full eBook now ►

← click
here



Each eBook has 75-100 pages

**RUNNING
EXTRA**

RETRO REBUILDS

CF7

HO
SCALE

Classic rebuilt roadswitcher featuring five cabs and two hoods

A staple of ATSF, passenger and shortline operations from the 1970s on



RAPIDO
TRAINS INC.



ESU LOKSOUND MoPower



CLICK HERE

All locomotives feature the MoPower capacitor for uninterrupted DCC power. Suggested minimum radius: 18".

RAPIDO

CLICKABLE ADVERTISER INDEX

[ABR Model Works](#)

[Accu-Lites](#)

[Amherst Hobby Show](#)

[Atlas Model Railroad Co.](#)

[Bachmann](#)

[Berrett Hill Trains](#)

[Black Cat Publishing](#)

[Blair Line](#)

[Crew Call with Mike Rose](#)

[Digitrax \(2 page spread\)](#)

[DVL Design LLC](#)

[East Coast Circuits](#)

[ESU LokSound](#)

[Fast Tracks](#)

[Great Decals](#)

[Iowa Scaled Engineering](#)

[Logic Rail Technologies](#)

[Model Railroad Control System](#)

[Monashee Laser Engineering](#)

[Monroe Models](#)

[MRH Store \(1\)](#)

[MRH Store \(2\)](#)

[MRH Store \(3\)](#)

[MRH Store \(4\)](#)

[MRH Store \(5\)](#)

[Mt. Albert Scale Lumber](#)

[NCE \(2 page spread\)](#)

[North American Railcars \(PWRS\)](#)

[Oak Hill Rail Supply](#)

[OKC Train Show](#)

[Pre-Size Model Specialities](#)

[Precision Design Co.](#)

[Proto87.com](#)

[Rapido \(1\)](#)

[Rapido \(2\)](#)

[Ring Engineering](#)

[Rock Island Hobby](#)

[Roomettes](#)

[Scale Trains](#)

[Southern Digital](#)

[Streamlined Backshop](#)

[TAM Valley Depot](#)

[Train Control Systems \(TCS\)](#)

[TrainMasters TV](#)

[Trainworld.com](#)

[Walthers](#)

Get more articles like this

GIVE IT A LIKE



Did you see this article?

In the **SEPTEMBER 2025 MRH RUNNING EXTRA!**



Intro to model
railroad operations

Get full eBook now ▶

click here

MRH

**RUNNING
EXTRA**

Each eBook has 75-100 pages

Clickable "other" index

[Other – Contents](#)

[Other – Cover](#)

[Other – MRH Marketplace](#)

[Other – MRH Sponsors](#)



REGISTER
(free)

[INDEX](#)

[TABLE OF CONTENTS](#)

[MRHMAG.COM](#)

[INDEX](#)

[TABLE OF CONTENTS](#)

Coming next month in MRH ...

TrainMasters TV is back ...

Coming attractions ...

LAYOUT TOURS



Qualman's Michigan Lines
Dean Ferris' Oregon Joint Line
Mike Armstrong's Rock Island
Ron King's Erie Railroad
Jim Tilley's PRR / B&O

AHA MOMENTS



Pan Pastels Decoded p1,2,3,4
Black styrene secrets
Making LED headlight lenses
Flawless Kadee couplers
Ultra-realistic scale figures

BACKSHOP CLINIC



Modeling with light, p3
Arduinos for Modelers p1,2,3
Detailing turnouts
Let's build a bungalow
Low temperature soldering

TOMA MADE EASY



TOMA can be easy!
TOMA: Budget benchwork
TOMA: Doing trackwork
TOMA: Module-section wiring
TOMA: DCC on a budget

Make feeder wires invisible ...

Can you see the feeders?



Using FRP for a better backdrop ...

... coming October 15th in the
September MRH

Coming next month in Running Extra ...

... all the MRH articles and ads, PLUS:

Joe Fugate unveils the new Siskiyou Line 2 layout plan – and lots more!



Jim Six's layout update ...



Make your backdrop removable ...

... all this and much more!

SUBSCRIBE AND SAVE UP TO 80%

REGISTER
(free)

[INDEX](#)

[TABLE OF CONTENTS](#)

[MRHMAG.COM](#)

[INDEX](#)

[TABLE OF CONTENTS](#)