

Engine Serial Number Locator
Large Industrial Diesel Engines



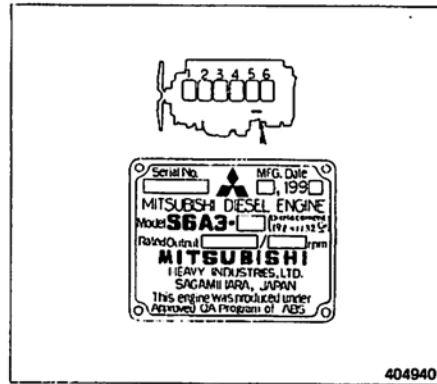
S6A3

1.2 Engine serial number location

The engine serial number is stamped on the nameplate attached to the left rear side of the engine.

Example: Model Serial number
 S6A3 30125

On the nameplate are also stamped the output and rated speed. The numbers in the illustrations show cylinder numbers.



S6B3

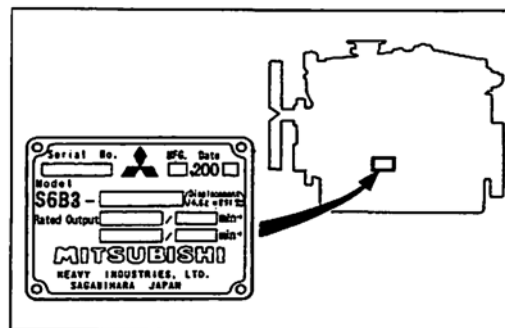
1.2 Engine Serial Number Location

The engine serial number is stamped on the nameplate attached to the left center side of the engine.

< Example >

Model
S6B3

Engine serial No.
30125



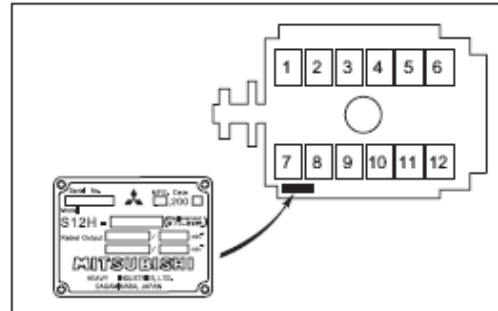
S12H

3. Engine serial number location

The engine serial number is stamped on the nameplate of the lateral side of the engine.

The rated engine output and speed are also stamped on the nameplate.

The numbers shown in the illustration mean the cylinder numbers.

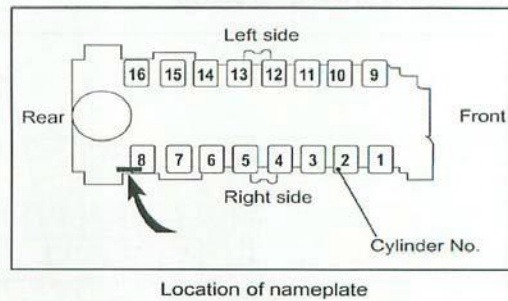


Nameplate location

S16R

1.7 Engine serial number location

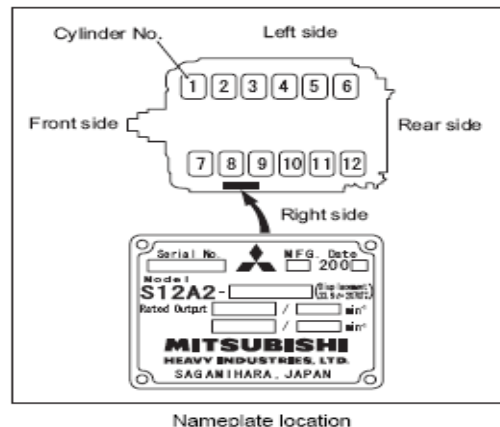
The engine serial number is stamped on the nameplate of the left front side of the engine.
The rated output and speed are also stamped on the nameplate.



S12A2

3. Engine serial number location

The engine serial number is stamped on the nameplate of the lateral side of the engine.
The rated engine output and speed are also stamped on the nameplate.
The numbers shown in the illustration mean the cylinder numbers.

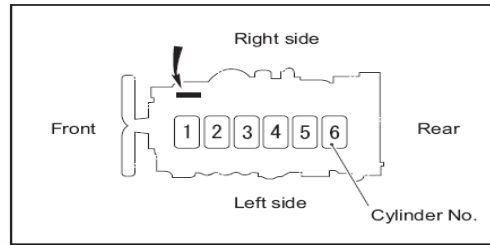


S6R

3. Engine serial number location

The engine serial number is stamped on the nameplate of the left front side of the engine.

The rated output and speed are also stamped on the nameplate.



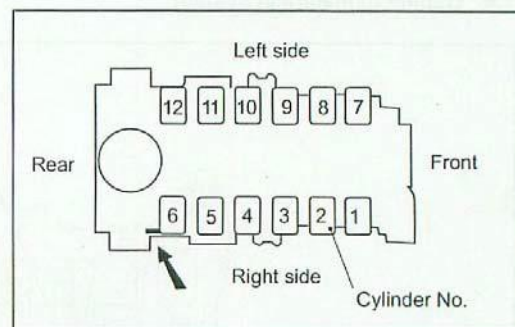
Nameplate location

S12R

1.7 Engine serial number location

The engine serial number is stamped on the nameplate of the left front side of the engine.

The rated output and speed are also stamped on the nameplate.



Location of nameplate



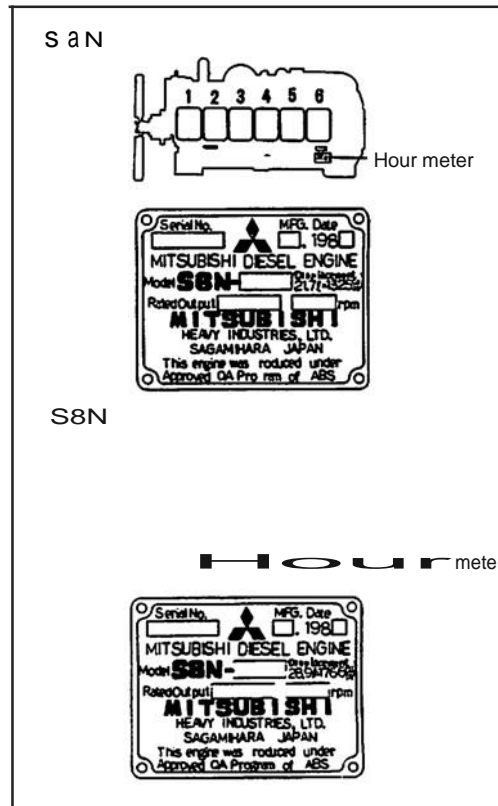
S&N & SBN

The engine serial number is stamped on the nameplate attached to the left rear side of the engine.

Example

| Model | Serial number |
|-------|---------------|
| S6N | 00012 |

On the nameplate are also stamped the output and rated speed. The numbers in the illustrations show cylinder numbers.

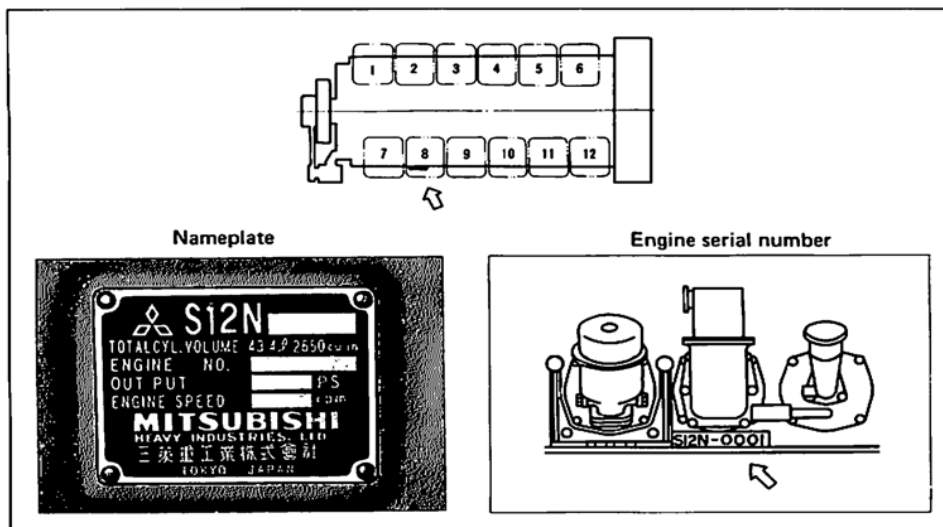


S12N & S16N

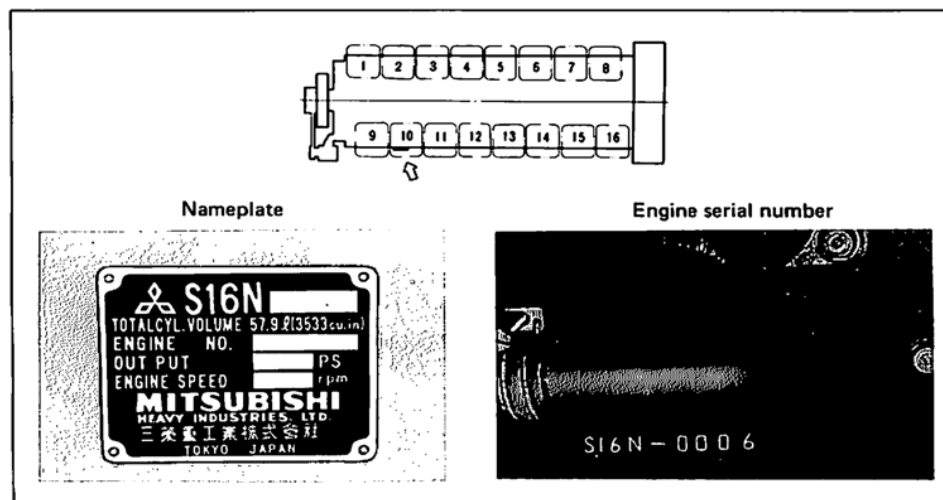
ENGINE SERIAL NUMBERS

The serial numbers assigned to your engines distinguish them from all other engines of Model S12N and S16N, and are to be cited in written communication for acquiring replacement parts or other supplies or for asking your MITSUBISHI-authorized shop to repair them.

The serial numbers are punched on the engines at the location and in the form shown:



S12N



S16N

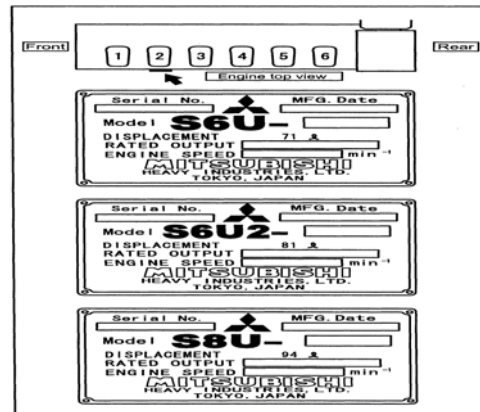
S6U

1.7 Engine Serial Number

The engine serial number is stamped on the nameplate attached on the left side of the engine.

| Model | Engine serial number |
|-------|----------------------|
| S6U | 10012 |
| S6U2 | 20100 |
| S8U | 10030 |

The nameplate is stamped with the engine serial number, rated output, and rated speed. Numbers in the illustration indicate cylinder numbers.



S12U & S16U

1.7 Engine Serial Number

The engine serial number is stamped on the nameplate attached on the left side of the engine.

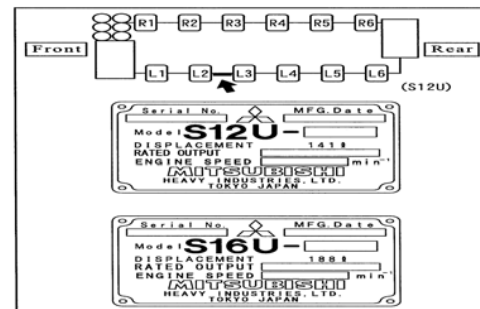
| Model | Engine serial number |
|-------|----------------------|
| S12U | 10012 |
| S16U | 20100 |

Note: The engine serial number is stamped.

This sequential number starting from 10001 indicates the order of shipping from us.

The nameplate is stamped with the engine serial number, rated output, and rated speed.

Numbers in the illustration indicate cylinder numbers.



Nameplate location