

**AN ORDINANCE AMENDING THE LAND MANAGEMENT CODE OF PARK CITY, UTAH, REVISING CHAPTER 2.4 - HISTORIC RESIDENTIAL-MEDIUM DENSITY (HRM) SECTION 15-2.4-5 SPECIAL REQUIREMENTS FOR MULTI-UNIT DWELLINGS, SECTION 15-2.4-6 EXISTING HISTORIC STRUCTURES, AND SECTION 15-2.4-9 SULLIVAN ROAD ACCESS.**

WHEREAS, the Land Management Code was adopted by the City Council of Park City, Utah to promote the health, safety and welfare of the residents, visitors, and property owners of Park City; and

WHEREAS, the Land Management Code implements the goals, objectives and policies of the Park City General Plan to maintain the quality of life and experiences for its residents and visitors; and to preserve the community's unique character and values; and

WHEREAS, the City reviews the Land Management Code on a regular basis and identifies necessary amendments to address planning and zoning issues that have come up, and to address specific LMC issues raised by Staff, Planning Commission, and City Council, to address applicable changes to the State Code, and to align the Code with the Council's goals; and

WHEREAS, the City's goals include encouraging the rehabilitation of existing historic structures, providing affordable housing, and creating new development along an important corridor that is compatible with historic structures in the surrounding area; and

WHEREAS, Chapters 2.4 Historic Residential-Medium Density District (HRM), provides a description of requirements, provisions and procedures specific to this zoning district that the City desires to update and revise. These revisions concern special requirements for multi-unit dwellings, existing historic structures and Sullivan Road access; and

WHEREAS, the Planning Commission held work session discussion on July 31, 2013 and provided input and direction; and

WHEREAS, the Planning Commission duly noticed and conducted a public hearing at the regularly scheduled meeting on September 11, 2013 and September 25, 2013, and forwarded a positive recommendation to City Council; and

WHEREAS, the City Council duly noticed and conducted a public hearing at its regularly scheduled meeting on October 17, 2013; and

WHEREAS, it is in the best interest of the residents of Park City, Utah to amend the Land Management Code to be consistent with the Park City General Plan and to be consistent with the values and identified goals of the Park City community and City Council to protect health and safety, maintain the quality of life for its residents, preserve and protect the residential neighborhoods, preserve historic structures, promote economic development within the Park City Historic Main Street business area, and preserve the community's unique character.

NOW, THEREFORE, BE IT ORDAINED by the City Council of Park City, Utah as follows:

SECTION 1. AMENDMENTS TO TITLE 15 - Land Management Code Chapter 2- Sections 15-2.4-5, 15-2.4-6, and 15-2.4-9. The recitals above are incorporated herein as findings of fact. Chapter 15-2.4 of the Land Management Code of Park City are hereby amended as redlined (see Attachment 1).

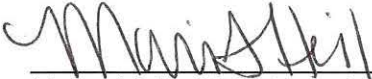
SECTION 2. EFFECTIVE DATE. This Ordinance shall be effective upon publication.

PASSED AND ADOPTED this 17 day of October, 2013

PARK CITY MUNICIPAL CORPORATION

  
Dana Williams, Mayor

Attest:

  
Marci Heil, City Recorder

Approved as to form:

  
Mark Harrington, City Attorney



**PARK CITY MUNICIPAL CODE  
TABLE OF CONTENTS**

**TITLE 15 LAND MANAGEMENT CODE - CHAPTER 2.4**

---

**TITLE 15 - LAND MANAGEMENT CODE**

**CHAPTER 2.4 - HISTORIC RESIDENTIAL-MEDIUM DENSITY (HRM)  
DISTRICT**

15-2.4-1.	PURPOSE.....	1
15-2.4-2.	USES.....	1
15-2.4-3.	CONDITIONAL USE PERMIT REVIEW.....	2
15-2.4-4.	LOT AND SITE REQUIREMENTS.....	3
15-2.4-5.	SPECIAL REQUIREMENTS FOR MULTI-UNIT DWELLINGS.....	8
15-2.4-6.	EXISTING HISTORIC STRUCTURES.....	8
15-2.4-7.	BUILDING HEIGHT.....	9
15-2.4-8.	PARKING REGULATIONS.....	9
15-2.4-9.	SULLIVAN ROAD ACCESS.....	10
15-2.4-10.	ARCHITECTURAL REVIEW.....	11
15-2.4-11.	CRITERIA FOR BED AND BREAKFAST INNS.....	12
15-2.4-12.	OUTDOOR EVENTS AND MUSIC.....	12
15-2.4-13.	VEGETATION PROTECTION.....	13
15-2.4-14.	SIGNS.....	13
15-2.4-15.	RELATED PROVISIONS.....	13



**TITLE 15 - LAND MANAGEMENT CODE (LMC)**  
**CHAPTER 2.4 - HISTORIC RESIDENTIAL - MEDIUM DENSITY**  
**(HRM) DISTRICT**

*Chapter adopted by Ordinance No. 00-51*

**15-2.4-1. PURPOSE.**

The purpose of the Historic Residential Medium Density (HRM) District is to:

(A) allow continuation of permanent residential and transient housing in original residential Areas of Park City,

(B) encourage new Development along an important corridor that is Compatible with Historic Structures in the surrounding Area,

(C) encourage the rehabilitation of existing Historic Structures,

(D) encourage Development that provides a transition in Use and scale between the Historic District and the resort Developments,

(E) encourage Affordable Housing,

(F) encourage Development which minimizes the number of new driveways Accessing existing thoroughfares and minimizes the visibility of Parking Areas, and

(G) establish specific criteria for the review of Neighborhood Commercial Uses in Historic Structures along Park Avenue.

**15-2.4-2. USES.**

Uses in the HRM District are limited to the following:

(A) **ALLOWED USES.**

- (1) Single Family Dwelling
- (2) Duplex Dwelling
- (3) Secondary Living Quarters
- (4) Lockout Unit<sup>1</sup>
- (5) Accessory Apartment<sup>2</sup>
- (6) Nightly Rental<sup>3</sup>
- (7) Home Occupation

---

<sup>1</sup>Nightly rental of Lockout Units requires a Conditional Use permit.

<sup>2</sup>See LMC Chapter 15-4-7, Supplemental Regulations for Accessory Apartments.

<sup>3</sup>Nightly Rentals do not include the Use of dwellings for Commercial Uses.

**PARK CITY MUNICIPAL CODE - TITLE 15 LMC, Chapter 2.4 Historic Residential - Medium Density (HRM) District** **15-2.4-2**

---

- (8) Child Care, In-Home Babysitting
- (9) Child Care, Family<sup>4</sup>
- (10) Child Care, Family Group<sup>4</sup>
- (11) Accessory Building and Use
- (12) Conservation Activity
- (13) Agriculture
- (14) Parking Area or Structure with four (4) or fewer spaces

**(B) CONDITIONAL USES.**

- (1) Triplex Dwelling
- (2) Multi-Unit Dwelling
- (3) Group Care Facility
- (4) Child Care Center<sup>4</sup>
- (5) Public and Quasi-Public Institution, Church, and School
- (6) Essential Municipal Public Utility Use, Facility Service, and Structure
- (7) Telecommunication Antenna<sup>5</sup>
- (8) Satellite Dish, greater than thirty-nine inches (39") in diameter<sup>6</sup>
- (9) Bed and Breakfast Inn<sup>7</sup>
- (10) Boarding House, Hostel<sup>7</sup>
- (11) Hotel, Minor<sup>7</sup>
- (12) Office, General<sup>8</sup>

---

<sup>4</sup> See LMC Chapter 15-4-9 for Child Care Regulations

<sup>5</sup> See LMC Chapter 15-4-14, Supplemental Regulations for Telecommunications Facilities

<sup>6</sup> See LMC Chapter 15-4-13, Supplemental Regulations for Satellite Receiving Antennas

<sup>7</sup> Allowed only in Historic Structures or historically Compatible Structures

- (13) Retail and Service Commercial, Minor<sup>8</sup>
- (14) Retail and Service Commercial, personal improvement<sup>8</sup>
- (15) Neighborhood Market, without gasoline sales<sup>8</sup>
- (16) Cafe, Deli<sup>8</sup>
- (17) Café, Outdoor Dining<sup>9</sup>
- (18) Parking Area or Structure with five (5) or more spaces
- (19) Temporary Improvement<sup>10</sup>
- (20) Recreation Facility, Public
- (21) Recreation Facility, Private
- (22) Outdoor Events<sup>10</sup>
- (23) Fences greater than six feet (6') in height from Final Grade<sup>10</sup>

- (C) PROHIBITED USES.** Any Use not listed above as an Allowed or Conditional Use is a prohibited Use.

*(Amended by Ord. Nos. 06-69; 09-10)*

**15-2.4-3. CONDITIONAL USE PERMIT REVIEW.**

The Planning Director shall review any Conditional Use permit (CUP) Application in the HRM District and shall forward a recommendation to the Planning Commission regarding compliance with the

---

<sup>8</sup> Allowed only in Historic Structures

<sup>9</sup> Requires an Administrative Conditional Use permit. Allowed in association with a Café or Deli

<sup>10</sup> Requires an Administrative or Administrative Conditional Use permit, see Section 15-4

Design Guidelines for Park City's Historic Districts and Historic Sites. The Planning Commission shall review the Application according to Conditional Use permit criteria set forth in Section 15-1-10, as well as the following:

(A) Consistent with the Design Guidelines for Park City's Historic Districts and Historic Sites.

(B) The Applicant may not alter the Historic Structure to minimize the residential character of the Building.

(C) Dedication of a Facade Preservation Easement to assure preservation of the Structure is required.

(D) New Buildings and additions must be in scale and Compatible with existing Historic Buildings in the neighborhood. Larger Building masses should be located to rear of the Structure to minimize the perceived mass from the Street.

(E) Parking requirements of Section 15-3 shall be met. The Planning Commission may waive parking requirements for Historic Structures. The Planning Commission may allow on-Street parallel parking adjacent to the Front Yard to count as parking for Historic Structures, if the Applicant can document that the on-Street Parking will not impact adjacent Uses or create traffic circulation hazards. A traffic study, prepared by a registered Engineer, may be required.

Minimum Lot Area for all other Uses shall be determined by the Planning Commission during the Conditional Use review.

(F) All Yards must be designed and maintained in a residential manner. Existing mature landscaping shall be preserved wherever possible. The Use of native plants and trees is strongly encouraged.

(G) Required Fencing and Screening between commercial and Residential Uses is required along common Property Lines.

(H) All utility equipment and service Areas must be fully Screened to prevent visual and noise impacts on adjacent Properties and on pedestrians.

*(Amended by Ord. No. 06-69; 12-37)*

#### **15-2.4-4. LOT AND SITE REQUIREMENTS.**

Except as may otherwise be provided in this Code, no Building permit shall be issued for a Lot unless such Lot has Area, width, and depth as required, and Frontage on a private or Public Street shown on the Streets Master Plan or on a private easement connecting the Lot to a Street shown on the Streets Master Plan. All Development must comply with the following:

(A) **LOT SIZE.** Minimum Lot Areas for Residential Uses are as follows:

Single Family Dwelling	1,875 sq. ft.
Duplex Dwelling	3,750 sq. ft.
Triplex Dwelling	4,687 sq. ft.
Four-plex Dwelling	5,625 sq. ft.

Developments consisting of more than four (4) Dwelling Units require a Lot Area at

least equal to 5,625 square feet plus an additional 1,000 square feet per each additional Dwelling Unit over four (4) units. All Setback, height, parking, Open Space, and architectural requirements must be met. See Section 15-2.4-3, Conditional Use Permit Review.

(B) **LOT WIDTH.** The minimum width of a Lot is 37.50 feet, measured fifteen feet (15') from the Front Lot Line. Existing platted Lots of record, with a minimum width of at least twenty five feet (25'), are considered legal Lots in terms of Lot Width. In the case of unusual Lot configurations, Lot Width measures shall be determined by the Planning Director.

(C) **FRONT YARD.**

(1) The minimum Front Yard for Single-Family, Duplex Dwellings, and Accessory Buildings is fifteen feet (15'). If the Lot depth is seventy five feet (75') or less, then the minimum Front Yard is ten feet (10').

(2) New Front Facing Garages for Single Family and Duplex Dwellings must be at least twenty feet (20') from the Front Lot Line.

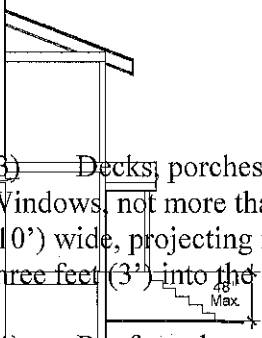
(3) See Section 15-2.4-5 for special requirements for Triplexes and Multi-Unit Dwellings.

(D) **FRONT YARD EXCEPTIONS.** The Front Yard must be open and free of any Structure except:

(1) Fences, walls, and retaining walls not more than four feet (4') in height, or as permitted in Section 15-4-2. On Corner Lots, Fences more than three (3') in height are prohibited within twenty-five feet (25') of the intersection, at back of curb.

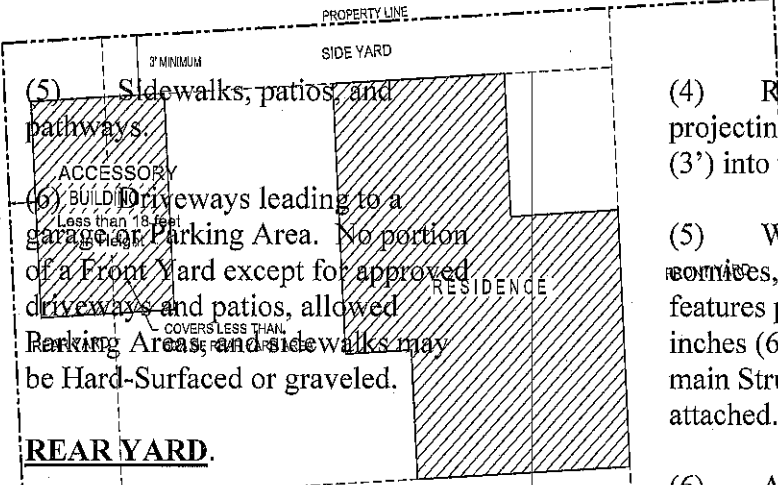
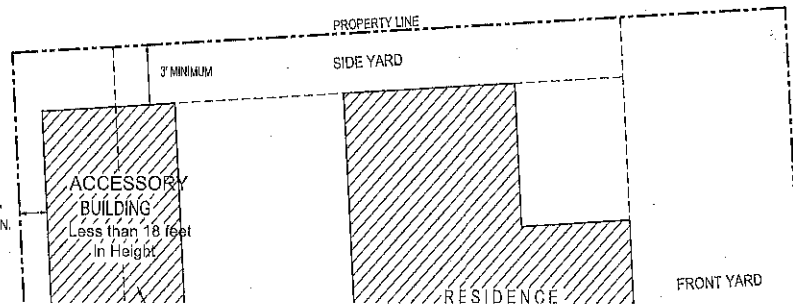
(2) Uncovered steps leading to the Main Building; provided the steps are not more than four feet (4') in height from Final Grade, not including any required handrail, and do not cause any danger or hazard to traffic by obstructing the view of a Street or intersection.

Front Yard  
← →



(3) Decks, porches, and Bay Windows, not more than ten feet (10') wide, projecting not more than three feet (3') into the Front Yard.

(4) Roof overhangs, eaves, and cornices projecting not more than three feet (3') into the Front Yard.

- 
- (5) Sidewalks, patios, and pathways.
- (6) Driveways leading to a garage or Parking Area. No portion of a Front Yard except for approved driveways and patios, allowed Parking Areas, and sidewalks may be Hard-Surfaced or graveled.
- (E) **REAR YARD.**
- (1) The minimum Rear Yard is ten feet (10') for all Main Buildings, and one foot (1') for detached Accessory Buildings.
- (2) See Section 15-2.4-5, Special Requirements for Multi-Unit Dwellings.
- (F) **REAR YARD EXCEPTIONS.**
- (1) Bay Windows not more than ten feet (10') wide projecting not more than two feet (2') into the Rear Yard.
- (2) Chimneys not more than five feet (5') wide projecting not more than two feet (2') into the Rear Yard.
- (3) Window wells and light wells projecting not more than four feet (4') into the Rear Yard.
- (4) Roof overhangs and eaves projecting not more than three feet (3') into the Rear Yard.
- (5) Window sills, belt courses, cornices, trim, and other ornamental features projecting not more than six inches (6") beyond the window or main Structure to which they are attached.
- (6) A detached Accessory Building not more than eighteen feet (18') in height, located a minimum of five feet (5') behind the front façade of the Main Building, and maintaining a minimum Rear Yard Setback of one foot (1'). Such Structure must not cover over fifty percent (50%) of the Rear Yard. See the following illustration:
- 



(7) A Hard-Surfaced Parking Area subject to the same location requirements as a detached Accessory Building.

(8) Screened mechanical equipment, hot tubs, or similar Structures located at least five feet (5') from the Rear Lot Line.

(9) Fences, walls, and retaining walls not over six feet (6') in height, or as permitted in Section 15-4-2.

(10) Patios, decks, pathways, steps, and similar Structures not more than thirty inches (30") above Final Grade, located at least five feet (5') from the Rear Lot Line.

**(G) SIDE YARD.**

(1) The minimum Side Yard for any Single Family, Duplex Dwelling or Accessory Building is five feet (5').

(2) The minimum Side Yard for Lots twenty-five feet (25') wide or less is three feet (3').

(3) A Side Yard between connected Structures is not required where the Structures are designed with a common wall on a Property Line and the Lots are burdened with a party wall agreement in a form approved by the City Attorney and Chief Building Official. The longest dimension of a Building joined at the Property Line may not exceed one hundred feet (100').

(4) The minimum Side Yard for a detached Accessory Building, not greater than eighteen feet (18') in height, located at least five feet (5') behind the front facade of the Main Building, is three feet (3').

(5) On Corner Lots, the minimum Side Yard that faces a Street is ten feet (10') for both Main and Accessory Buildings.

(6) See Section 15-2.4-5 special requirements for Multi-Unit Dwellings.

(H) **SIDE YARD EXCEPTIONS.** The Side Yard must be open and free of any Structure except:

(1) Bay Windows not more than ten feet (10') wide projecting not more than two feet (2') into the Side Yard.<sup>11</sup>

(2) Chimneys not more than five feet (5') wide projecting not more than two feet (2') into the Side Yard.<sup>12</sup>

(3) Window well and light wells projecting not more than four feet (4') into the Side Yard.<sup>12</sup>

(4) Roof overhangs and eaves projecting not more than two feet (2') into the Side Yard.<sup>12</sup>

(5) Window sills, belt courses, cornices, trim, and other ornamental features projecting not more than six inches (6") beyond the window or main Structure to which they are attached.

(6) Patios, decks, pathways, steps, and similar Structures not more than thirty inches (30") in height above Final Grade.

(7) Fences, walls and retaining walls not more than six feet (6') in height, or as permitted in Section 15-4-2.

(8) Driveways leading to a garage or approved Parking Area.

(9) Pathways and steps connecting to a City staircase or pathway.

(10) Screened mechanical equipment, hot tubs, and similar Structures located a minimum of five feet (5') from the Side Lot Line.

(I) **SNOW RELEASE.** Site plans and Building design must resolve snow release issues to the satisfaction of the Chief Building Official.

(J) **CLEAR VIEW OF INTERSECTION.** No visual obstruction in excess of two feet (2') in height above road Grade shall be placed on any Corner Lot within the Site Distance Triangle. A reasonable number of trees may be allowed, if pruned high enough to permit automobile drivers an unobstructed view. This provision must not require changes in the Natural Grade on the Site.

*(Amended by Ord. Nos. 06-69; 09-10)*

**15-2.4-5. SPECIAL REQUIREMENTS FOR MULTI-UNIT DWELLINGS.**

(A) **FRONT YARD.** The Front Yard for any Triplex, or Multi-Unit Dwelling is twenty (20') feet. All new Front-Facing

---

<sup>11</sup> Applies only to Lots with a minimum Side Yard of five feet (5').

Garages shall be a minimum of twenty-five feet (25') from the Front Property Line. All Yards fronting on any Street are considered Front Yards for the purposes of determining required Setbacks. See Section 15-2.4-4(D), Front Yard Exceptions.

(B) **REAR YARD.** The Rear yard for a Triplex or Multi-Unit Dwelling is ten feet (10'). See Section 15-2.4-4(F), Rear Yard Exceptions.

(C) **SIDE YARD.** The Side Yard for any Triplex, or Multi-Unit Dwelling is ten feet (10'). See Section 15-2.4-4(H), Side Yard Exceptions.

(D) **OPEN SPACE.** The Applicant must provide Open Space equal to at least sixty percent (60%) of the total Site for all Triplex and Multi-Unit Dwellings. If reviewed as a Master Planned Development, then the Open Space requirements of Section 15-6-5 (D) shall apply. Parking is prohibited within the Open Space. See Section 15-15 Open Space. In cases of redevelopment of existing historic sites on the Historic Sites Inventory and contain fifty percent (50%) deed restricted affordable housing, the minimum open space requirement shall be thirty percent (30%).

*(Amended by Ord. No. 09-10; 12-37)*

#### **15-2.4-6. EXISTING HISTORIC STRUCTURES.**

Historic Structures that do not comply with Building Setbacks, Off-Street parking, and driveway location standards are valid Non-Complying Structures. Additions to Historic Structures are exempt from Off-

Street parking requirements provided the addition does not create a Lockout Unit or an Accessory Apartment. Additions must comply with Building Setbacks, Building Footprint, driveway location standards and Building Height.

(A) **EXCEPTION.** For additions to Historic Buildings and new construction on sites listed on the Historic Sites Inventory and in order to achieve new construction consistent with the Historic District Design Guidelines, the Planning Commission may grant an exception to the Building Setback and driveway location standards:

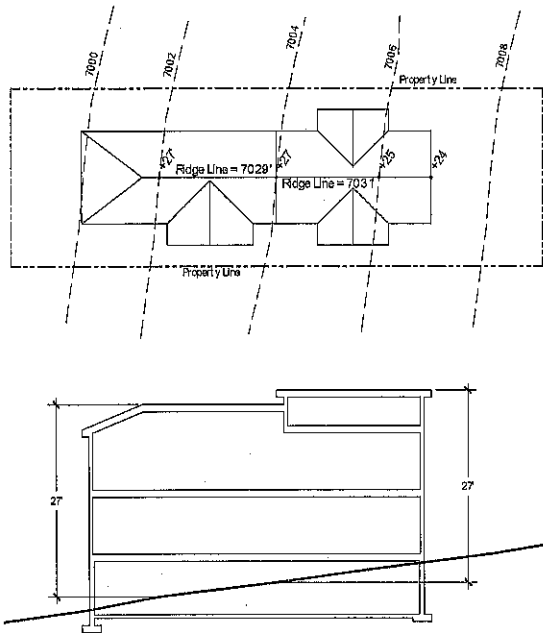
- (1) Upon approval of a Conditional Use permit,
- (2) When the scale of the addition or driveway is Compatible with the Historic Structure,
- (3) When the addition complies with all other provisions of this Chapter, and
- (4) When the addition complies with the International Building and Fire Codes.

*(Amended by Ord. No. 06-69)*

#### **15-2.4-7. BUILDING HEIGHT.**

No Structure shall be erected to a height greater than twenty-seven feet (27') from Existing Grade. This is the Zone Height.

**PARK CITY MUNICIPAL CODE - TITLE 15 LMC, Chapter 2.4 Historic Residential - Medium Density (HRM) District** **15-2.4-9**



**(A) BUILDING HEIGHT EXCEPTIONS.** The following height exceptions apply:

- (1) Antennas, chimney, flues, vents, and similar Structures may extend up to five feet (5') above the highest point of the Building to comply with International Building Code (IBC) requirements.
- (2) Mechanical equipment and associated Screening, when enclosed or Screened, may extend up to five feet (5') above the height of the Building.
- (3) Church spires, bell towers, and like architectural features as allowed under the Historic District Design Guidelines, may extend up to fifty percent (50%) above the Zone

Height, but may not contain Habitable Space above the Zone Height. Such exception requires approval by the Planning Director.

(4) To accommodate a roof form consistent with the Historic District Design Guidelines, the Planning Director may grant additional Building Height provided that no more than twenty percent (20%) of the roof ridge line exceeds the Zone Height requirements and the plans comply with height exception criteria in Section 15-2.1-6(10)(a-j).

(5) Elevator Penthouses may extend up to eight feet (8') above the Zone Height.

*(Amended by Ord. Nos. 06-69; 09-10)*

**15-2.4-8. PARKING REGULATIONS.**

- (A) Tandem Parking is allowed in the Historic District.
- (B) Common driveways are allowed along shared Side Yard Property Lines to provide Access to Parking in the rear of the Main Building or below Grade if both Properties are deed restricted to allow for the perpetual Use of the shared drive.
- (C) Common Parking Structures are allowed as a Conditional Use permit where it facilities:
- (1) the Development of individual Buildings that more closely conform to the scale of

Historic Structures in the District;  
and

(2) the reduction, mitigation or elimination of garage doors at the Street edge.

(D) A common Parking Structure may occupy below Grade Side Yards between participating Developments if the Structure maintains all Setbacks above Grade. Common Parking Structures requiring a Conditional Use permit are subject to a Conditional Use review, Section 15-1-10.

(E) Driveways between Structures are allowed in order to eliminate garage doors facing the Street, to remove cars from on-Street parking, and to reduce paved Areas, provided the driveway leads to an approved Garage or Parking Area.

(F) Turning radii are subject to review by the City Engineer as to function and design.

(G) See Section 15-3 Off Street Parking for additional parking requirements.

*(Amended by Ord. Nos. 06-69; 09-10)*

**15-2.4-9. SULLIVAN ROAD ACCESS.**

The Planning Commission may issue a Conditional Use permit (CUP) for Limited Access on Sullivan Road ("Driveway"). "Limited Access" allowed includes, but shall not be limited to: An additional curb cut for an adjoining residential or commercial project; paving or otherwise improving existing Access; increased

vehicular connections from Sullivan Road to Park Avenue; and any other City action that otherwise increases vehicular traffic on the designated Area.

**(A) CRITERIA FOR CONDITIONAL USE REVIEW FOR LIMITED ACCESS.**

Limited Access is allowed only when an Applicant proves the project has positive elements furthering reasonable planning objectives, such as increased Transferred Development Right (TDR) Open Space or Historic preservation in excess of that required in the zone.

**(B) NEIGHBORHOOD MANDATORY ELEMENTS CRITERIA.**

The Planning Commission shall review and evaluate the following criteria for all projects along Sullivan Road and Eastern Avenue:

**(1) UTILITY CONSIDERATIONS.** Utility extensions from Park Avenue are preferred, which provide the least disturbance to the City Park and the public as a whole.

**(2) ENHANCED SITE PLAN CONSIDERATIONS.** These review criteria apply to both Sullivan Road and Park Avenue Street fronts:

(a) Variation in Front Yard and Building Setbacks to orient porches and windows onto Street fronts.

(b) Increased Front Yard Setbacks.

- (c) Increased snow storage.
- (d) Increased Transferred Development Right (TDR) Open Space, and/or preservation of significant landscape elements.
- (e) Elimination of Multi-Unit or Triplex Dwellings.
- (f) Minimized Access to Sullivan Road.
- (g) Decreased Density.

**(3) INCORPORATION OF PEDESTRIAN AND LANDSCAPE IMPROVEMENTS ALONG PARK AVENUE, SULLIVAN ROAD, AND EASTERN AVENUE.** Plans must save, preserve, or enhance pedestrian connections and landscape elements along the Streetscape, within the Development Site, and between Park Avenue and Sullivan Road.

**(4) PARKING MITIGATION.** Plans that keep the Front Yard Setbacks clear of parking and minimize parking impacts near intensive Uses on Sullivan Road are positive elements of any Site plan.

**(C) AFFORDABLE HOUSING APPLICABILITY.** When the Development consists of fifty percent (50%)

or more deed restricted Affordable Housing Units, per the City's most current Affordable Housing Resolution, Section 15-2.4-9(B) above does not apply.

*(Amended by Ord. No. 06-69)*

**15-2.4-10. ARCHITECTURAL REVIEW.**

Prior to issuance of a Building Permit for any Conditional or Allowed Use, the Planning Department shall review the proposed plans for compliance with the Design Guidelines for Historic Districts and Historic Sites, Historic Preservation LMC Chapter 15-11, and Architectural Review LMC Chapter 15-5.

Appeals of departmental actions on compliance with the Design Guidelines for Historic Districts and Historic Sites, LMC Chapter 15-11, and LMC Chapter 5-5 are heard by the Historic Preservation Board as outlined in Section 15-1-18 of the Code.

*(Amended by Ord. Nos. 06-69; 09-23)*

**15-2.4-11. CRITERIA FOR BED AND BREAKFAST INNS.**

A Bed and Breakfast Inn is a Conditional Use subject to an Administrative Conditional Use permit. No Conditional Use permit may be issued unless the following criteria are met:

- (A) The Use is in a Historic Structure, addition thereto, or a historically Compatible Structure.
- (B) The Applicant will make every



attempt to rehabilitate the Historic portion of the Structure.

(C) The Structure has at least two (2) rentable rooms. The maximum number of rooms will be determined by the Applicant's ability to mitigate neighborhood impacts.

(D) In a Historic Structure, the size and configuration of the rooms are Compatible with the Historic character of the Building and neighborhood.

(E) The rooms are available for Nightly Rental only.

(F) An Owner/manager is living on-Site, or in Historic Structures there must be twenty-four (24) hour on-Site management and check-in.

(G) Food service is for the benefit of overnight guests only.

(H) No Kitchen is permitted within rental room(s).

(I) Parking on-Site is required at a rate of one (1) space per rentable room. If no on-Site parking is possible, the Applicant must provide parking in close proximity to the Bed and Breakfast Inn. The Planning Director may waive the parking requirement for Historic Structures if the Applicant proves that:

(1) no on-Site parking is possible without compromising the Historic Structure or Site, including removal of existing Significant Vegetation and all alternatives for proximate parking have been explored and exhausted; and

(2) the Structure is not economically feasible to restore or maintain without the adaptive Use.

(J) The Use complies with Section 15-1-10, Conditional Use review.

*(Amended by Ord. No. 06-69)*

#### **15-2.4-12. OUTDOOR EVENTS AND MUSIC.**

Outdoor events and music require an Administrative Conditional Use permit. The Use must comply with Section 15-1-10, Conditional Use Review. The Applicant must submit a Site plan and written description of the event, addressing the following:

(A) Notification of adjacent Property Owners.

(B) No violation of the City Noise Ordinance, Title 6.

(C) Impacts on adjacent Residential Uses.

(D) Proposed plans for music, lighting, Structures, electrical, signs, etc.

(E) Parking demand and impacts on neighboring Properties.

(F) Duration and hours of operation.

(G) Impacts on emergency Access and circulation.

#### **15-2.4-13. VEGETATION**

**PROTECTION.**

The Property Owner must protect Significant Vegetation during any Development activity. Significant Vegetation includes large trees six inches (6") in diameter or greater measured four and one-half feet (4 ½') above the ground, groves of small trees, or clumps of oak and maple covering an Area fifty square feet (50 sq. ft.) or more measured at the drip line.

Development plans must show all Significant Vegetation within twenty feet (20') of a proposed Development. The Property Owner must demonstrate the health and viability of all large trees through a certified arborist. The Planning Director shall determine the Limits of Disturbance and may require mitigation for loss of Significant Vegetation consistent with Landscape Criteria in LMC Chapter 15-3-3 and Title 14.

*(Amended by Ord. No. 06-69)*

**15-2.4-14. SIGNS.**

Signs are allowed in the HRM District as provided in the Park City Sign Code, Title 12.

**15-2.4-15. RELATED PROVISIONS.**

- Fences and Walls. LMC Chapter 15-4-2.
- Accessory Apartment. LMC Chapter 15-4-7.
- Satellite Receiving Antenna. LMC Chapter 15-5-13.
- Telecommunication Facility. LMC Chapter 15-5-14.

- Parking. LMC Chapter 15-3.
- Landscaping. Title 14; LMC Chapter 15-3.3(D).
- Lighting. LMC Chapters 15-3-3(C), 15-5-5(I).
- Historic Preservation Board. LMC Chapter 15-11.
- Park City Sign Code. Title 12.
- Architectural Review. LMC Chapter 15-5.
- Snow Storage. LMC Chapter 15-3.3(E).
- Parking Ratio Requirements. LMC Chapter 15-3-6.