

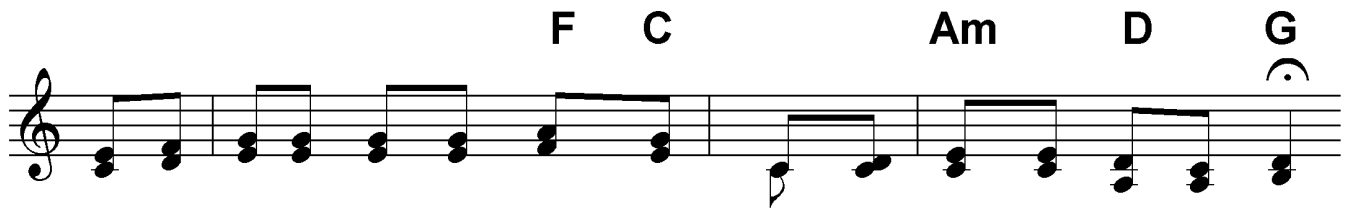
Lift Me Up Above the Shadows

Words: Herbert Buffum; vs. 4 by Robert E. Winsett, ca. 1922

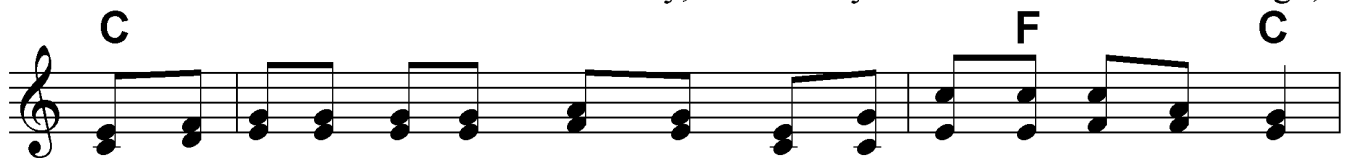
Music: Robert E. Winsett, ca. 1922



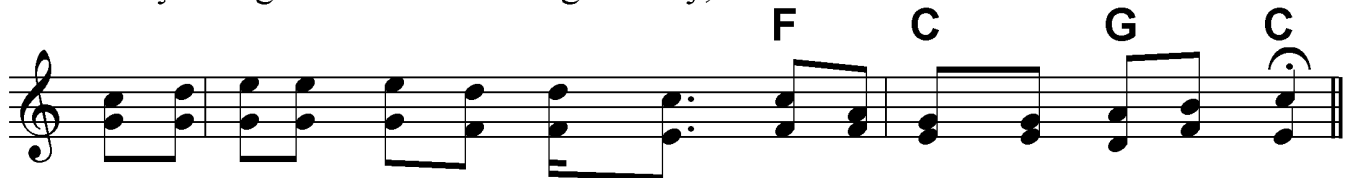
1. Lift me up a - bove the shad - ows, Plant my feet on high - er ground,
2. Lift me up a - bove the shad - ows, For the storms are rag - ing high,
3. Lift me up a - bove the shad - ows, Out of sor-row in - to joy,
4. Lift me up a - bove the shad - ows, When to earth You come a - gain,



Lift me up a - bove the clouds, Lord, Where the pure sun - shine is found,
 Lift me up, my bless - ed Sav - ior, Let me to Thy bos - som fly;
 Lift me up a - bove my grief, Lord, Give me gold for my al - loy;
 Let me be in the as - sem - bly, As Thy bride to ev - er reign;



Lift me up a - bove my weak - ness, Lift me up in - to Thy strength,
 There no e - vil thing can touch me, O - ver on the shin - ing side,
 Then when death mustclaim my spir - it, And the storms of life are past
 In Thy king - dom full of glo - ry, With our friends we'll ev - er be.



Lift me up a - bove the shad - ows, Till I stand with Thee at length.
 Lift me up a - bove the shad - ows, Let me ev - er - more a - bide.
 Lift me up a - bove the shad - ows, Till in heav'n I stand at last.
 Lift me up a - bove the shad - ows, There to dwell e - ter - nal - ly.

Lift Me Up Above the Shadows

p. 2

C F C

Lift me up a - bove the shad - ows,
Lift me up a - bove the shad - ows, lift me up a - bove the shad - ows,

This system features a treble clef with a C major key signature. The melody is written on a single staff with a C chord at the beginning, an F chord in the middle, and a C chord at the end. The lyrics are written below the treble staff. The bass line is on a bass clef staff, consisting of a series of chords.

G C

Lift me up and let me stand
Lift me up and let me stand, lift me up and let me stand

This system continues the melody with a G chord and a C chord. The lyrics are written below the treble staff. The bass line continues with chords.

G7 C

On the moun - tain - tops of glo - ry,
On the moun - tain - tops of glo - ry, on the moun - tain - tops of glo - ry,

This system features a G7 chord and a C chord. The lyrics are written below the treble staff. The bass line continues with chords.

F C

Let me dwell in Beu - lah land.
Let me dwell in Beu - lah land, oh, let me dwell in Beu - lah land.

This system features an F chord and a C chord. The lyrics are written below the treble staff. The bass line continues with chords.