



COLLIN COUNTY OUTER LOOP SOUTHEAST

from County Road 656 to the Rockwall County Line

NOTICE OF PUBLIC MEETING Collin County Outer Loop - Southeast

Collin County is hosting a public meeting with in-person and virtual options for the Collin County Outer Loop – Southeast project, a new location planned transportation facility extending approximately 14 miles from CR 656 in Farmersville, TX to the Rockwall/Collin County line. The purpose of the public meeting is to present Collin County’s preferred alignment, which has previously been identified as the Pink/Pink Shift Alignment, and to seek public input on a conceptual schematic design.

The same information will be available at both the in-person and virtual public meeting options. The in-person public meeting will follow an “open house” format where information will be on display and county representatives will be available to answer questions. The virtual option is not a live event. All public meeting materials will be posted to the project website at www.CCOL-SE.com and will consist of a pre-recorded video presentation, exhibit boards, and an interactive comment map.

In-Person Option*

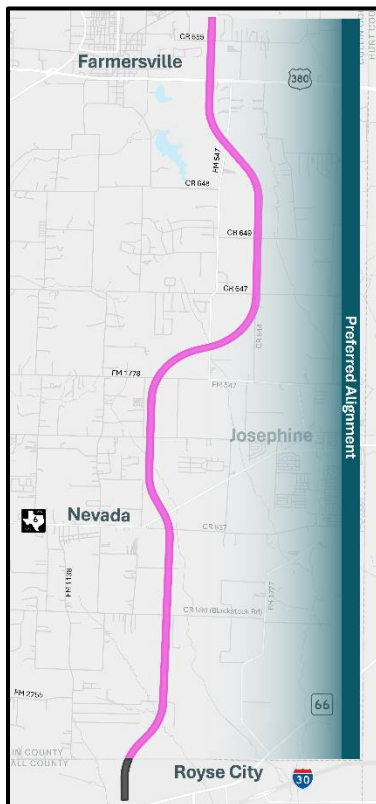
Tuesday, November 18, 2025
6:00 – 8:00 p.m.
Community High School Cafeteria
440 N. FM 1138
Nevada, TX 75173
(entrance on east side of school)

** Open House Format*

Virtual Option*

www.CCOL-SE.com
Tuesday, Nov. 18 to Tuesday, Dec. 9, 2025
All public meeting materials will be available on the project website from Tuesday, November 18, 2025, and through Tuesday, December 9, 2025.

** This is not a live event.*



ABOUT THE STUDY

The Collin County Outer Loop is a 55-mile planned transportation facility that will ultimately span from the Denton/Collin County line to the Rockwall/Collin County line, including this 14-mile section (Segments 2 and 4). The project addresses current and anticipated population growth in southeastern Collin County by improving north-south connectivity, reducing congestion, and enhancing safety.

The previous Technically Preferred Alignment (PTPA) was identified in 2009 – 2010 and has been refined through new data collection, evaluation of alternatives, and public and stakeholder input from the April 2025 public meeting. In September 2025, the Pink Alignment was selected as the new preferred alignment for the north and south ends of the project area and a “Pink Shift” option in the middle was presented for public input as part of a Virtual Open House.

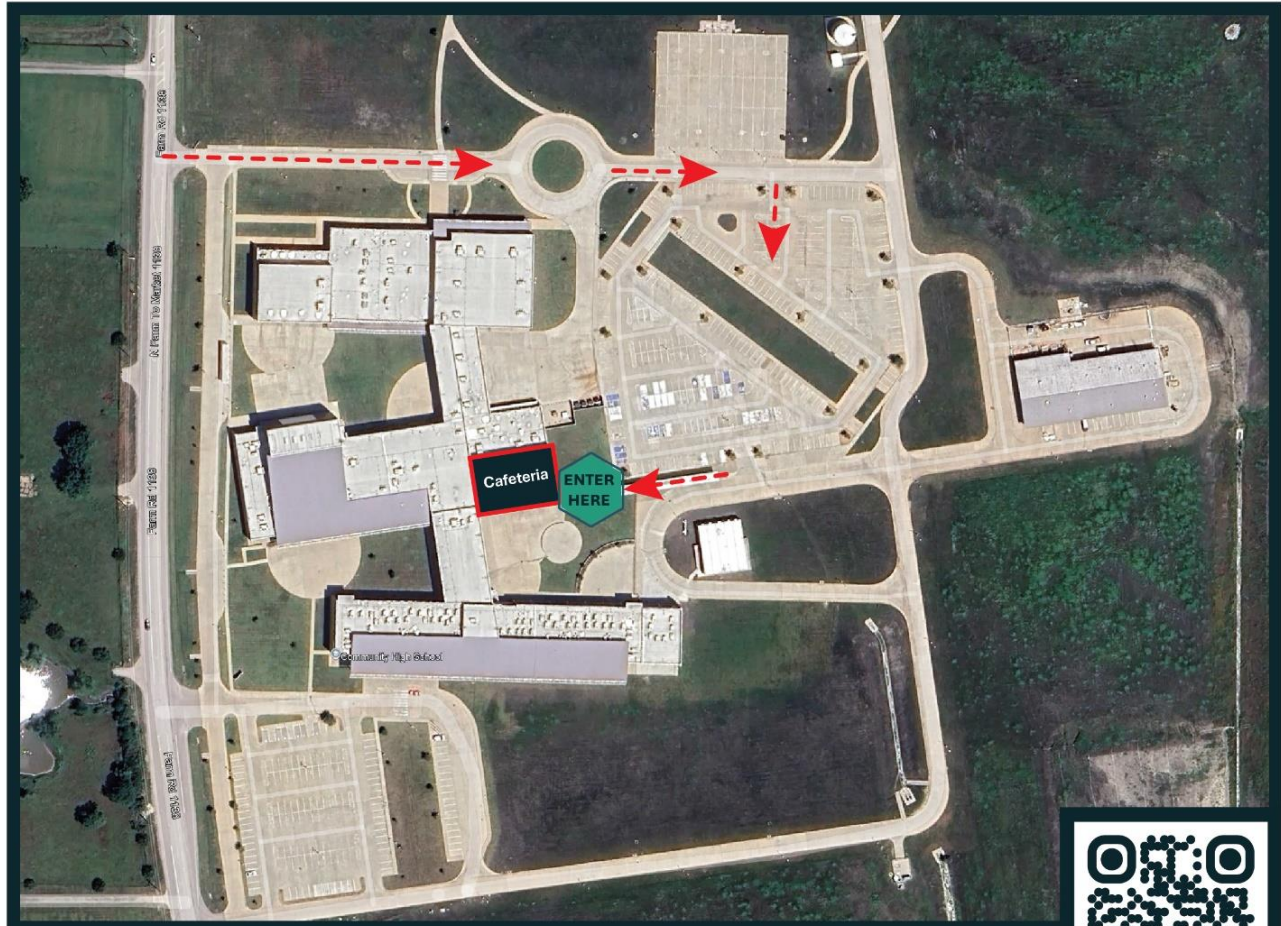
This public meeting presents an updated preferred alignment for the full project limits as the Pink Alignment, including the western shift of the alignment in the middle part of the study area, and seeks input from the public as the County advances schematic design and prepares the Local Environmental Document.



COLLIN COUNTY OUTER LOOP SOUTHEAST

from County Road 656 to the Rockwall County Line

IN-PERSON PUBLIC MEETING - VENUE LOCATION MAP



SCAN TO VISIT
www.CCOL-SE.com



The public is invited to submit comments on the proposed update through Tuesday, December 9, 2025.

Comments may be submitted in one of the following ways:

- In-person at the public meeting
- Online at www.CCOL-SE.com
- By mail or email to the project team at:
CCOL Project Team
Attn: Madeline Shepherd
13737 Noel Rd., Suite 700
Dallas, TX 75240
info@ccol-se.com

*The public meeting will be conducted in English. Persons who have special communication or accommodation needs, such as the need for an interpreter, may contact info@ccol-se.com. Requests should be made no later than **November 11, 2025**.*