

Public Workshop #3
Wednesday, November 16, 2022



Interpretation Available



Via Zoom

- Click on the “Interpretation” icon
- Pick the language you would like to listen to (Spanish or Armenian)

Interpretación en español

- Haga “click” en el icono – “interpretación”
- Escoja la opción para escuchar en español

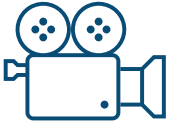
Zoom-ի միջոցով

- Կտտացրեք "Մեկնաբանություն" պատկերակին
- Ընտրեք լեզուն, որը ցանկանում եք լսել (իսպաներեն կամ հայերեն)

Housekeeping



Microphones are muted



Feel free to turn your cameras on



Q&A will be at the end of the presentation



To ask a question or make a comment, use the "Raise Hand" button at the bottom of the screen or use the Zoom chat feature.

Agenda

- Project Overview
- What We've Heard
- Multimodal Transportation
- Upcoming Engagement
- Q&A

Project Team

CITY OF BURBANK

Amanda Landry: Project Manager

Fred Ramirez: Asst. CDD Director

David Kim: Associate Planner

Joseph Pangilinan: Assistant Planner

WSP: Land Use & Transportation

ARELLANO ASSOCIATES: Outreach & Engagement

PERKINS + WILL: Urban Design

RINCON: Environmental Analysis

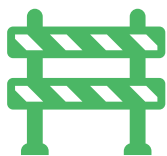
KOSMONT: Economic Market Analysis



The Specific Plan Update

Why Update the Burbank Media District Specific Plan?

The Burbank Media District Specific Plan is being updated by the City, in partnership with the Southern California Association of Governments (SCAG), to develop and implement policies and programs to:



Remove barriers to housing production



Streamline the permitting process



Introduce design standards for new development



The updated Specific Plan will foster a stronger jobs/housing balance within a safe, beautiful, and thriving community that embraces future mobility investments.



What We've Heard

Public Workshops and Input Received

- Community Values
- Potential Opportunities
- Mobility
- Recreation & Natural Resources
- Business & Economy
- Place types and Density
- Suitability of Sites for Development
 - Re-envisioning underutilized parking
 - Infill on vacant lots
 - Creative reuse of under-occupied buildings





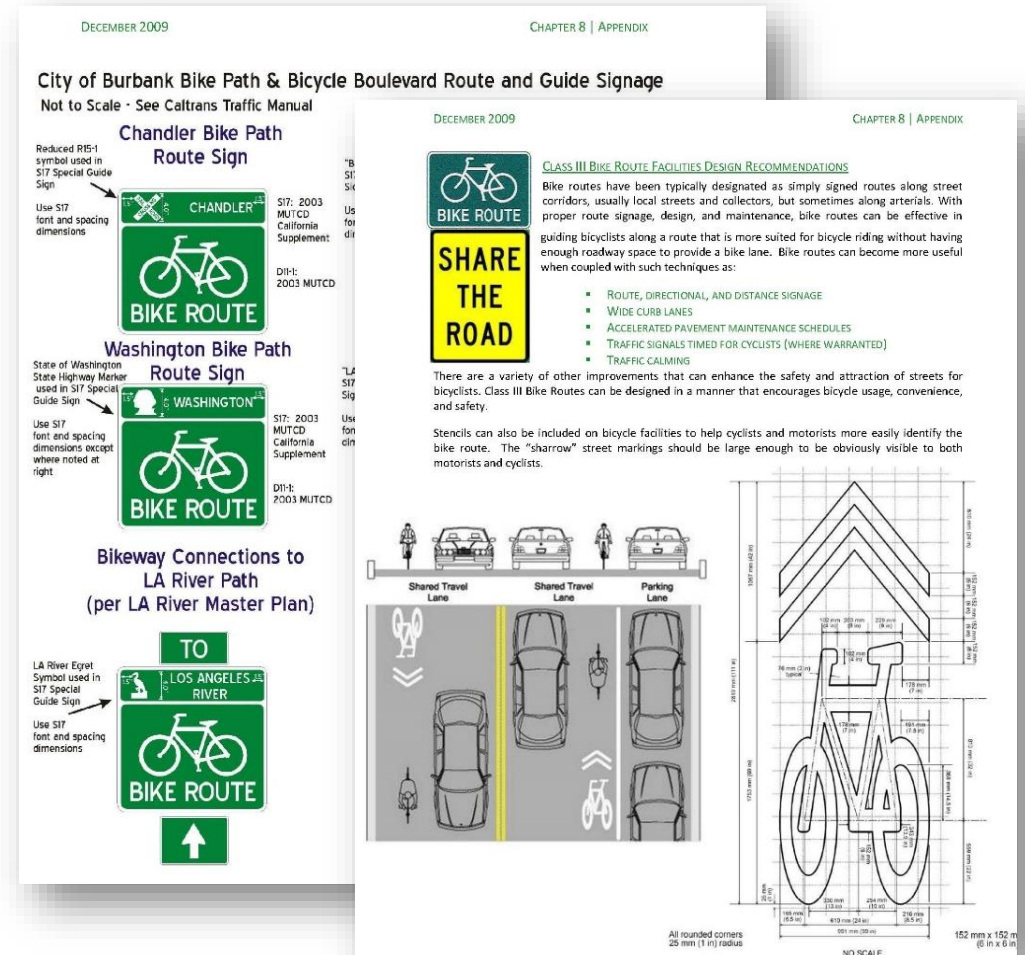
Multimodal Transportation

Existing Plans

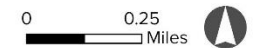


Existing Conditions & Policy Recommendations

- Bikeways
- Bike Parking
- Safety & Education
- Implementation

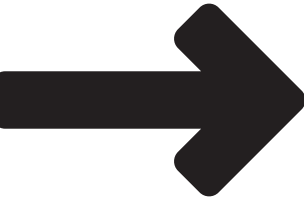


- Pedestrians
- Motorists
- Equestrian
- Bicyclists
- Transit



Current Commute Patterns

69,202 people work in the Media District, but live elsewhere








364 people work and live in the Media District



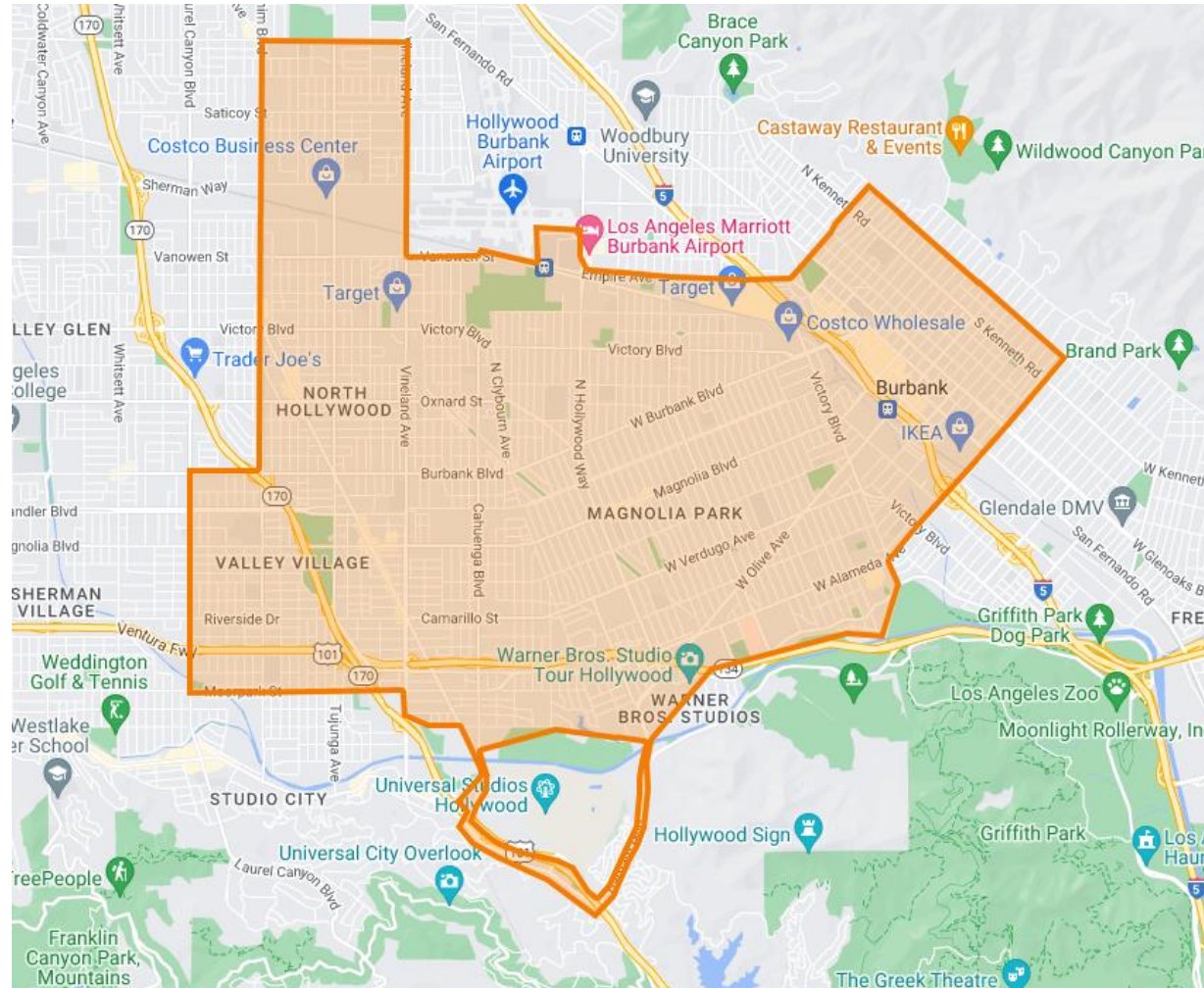
2,152 people live in the Media District and work elsewhere



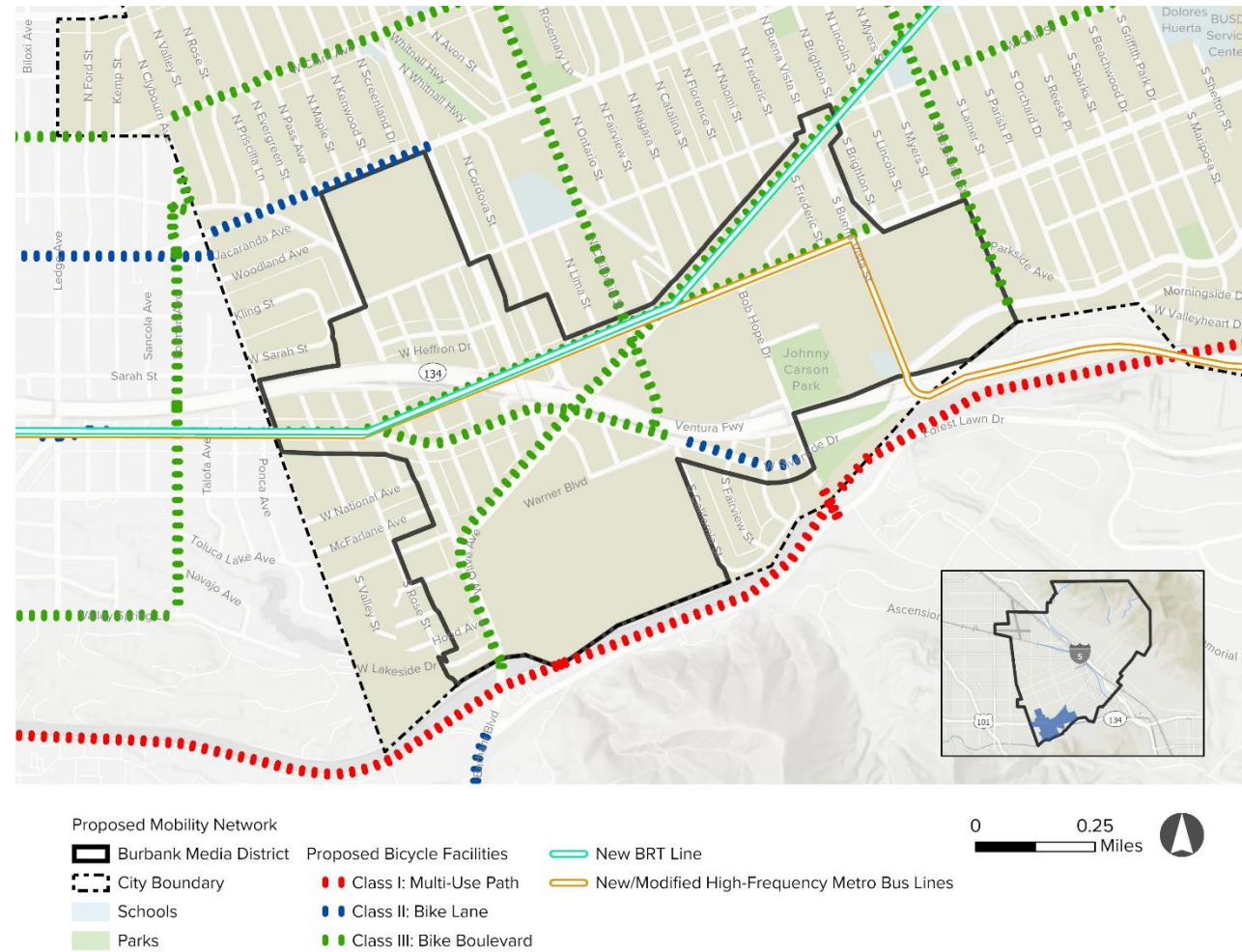
- Existing Mobility Network
- | | | | |
|--|---|--|--|
|  Burbank Media District |  Horse Trail |  Metro Bus Routes 155 |  Burbank Bus Routes NoHo to Media |
|  City Boundary |  Existing Bicycle Facilities Class II: Bike Lane |  Metro Bus Routes 222 |  Burbank Bus Routes Pink Route |
|  Schools |  Existing Bicycle Facilities Class III: Bike Boulevard |  Metro Bus Routes 501 | |
|  Parks | | | |

-  Burbank Media District  City Boundary  Schools  Parks
-  Bike  Public Transit  Safety Concerns
- Map Survey Results

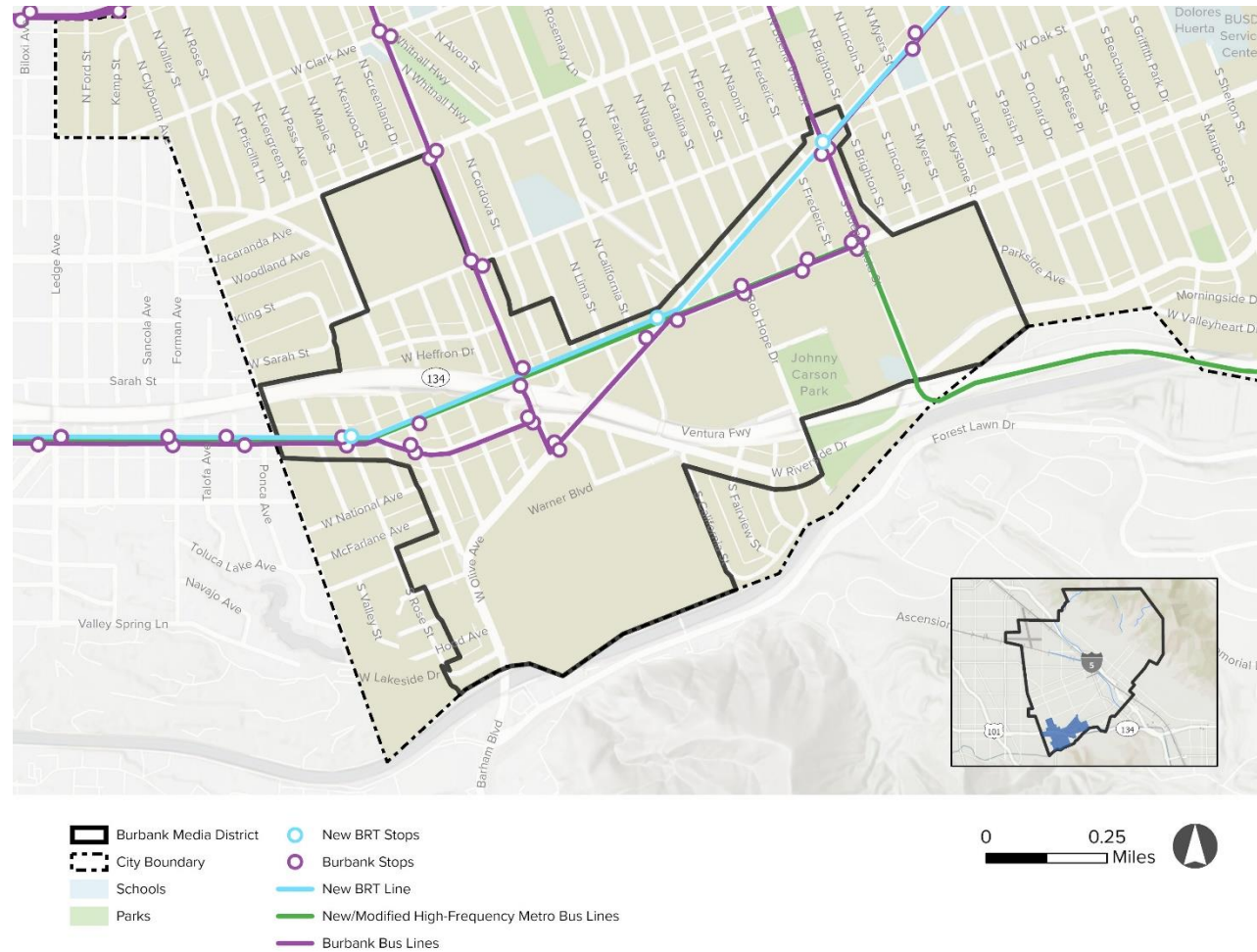
Metro Micro | North Hollywood Burbank



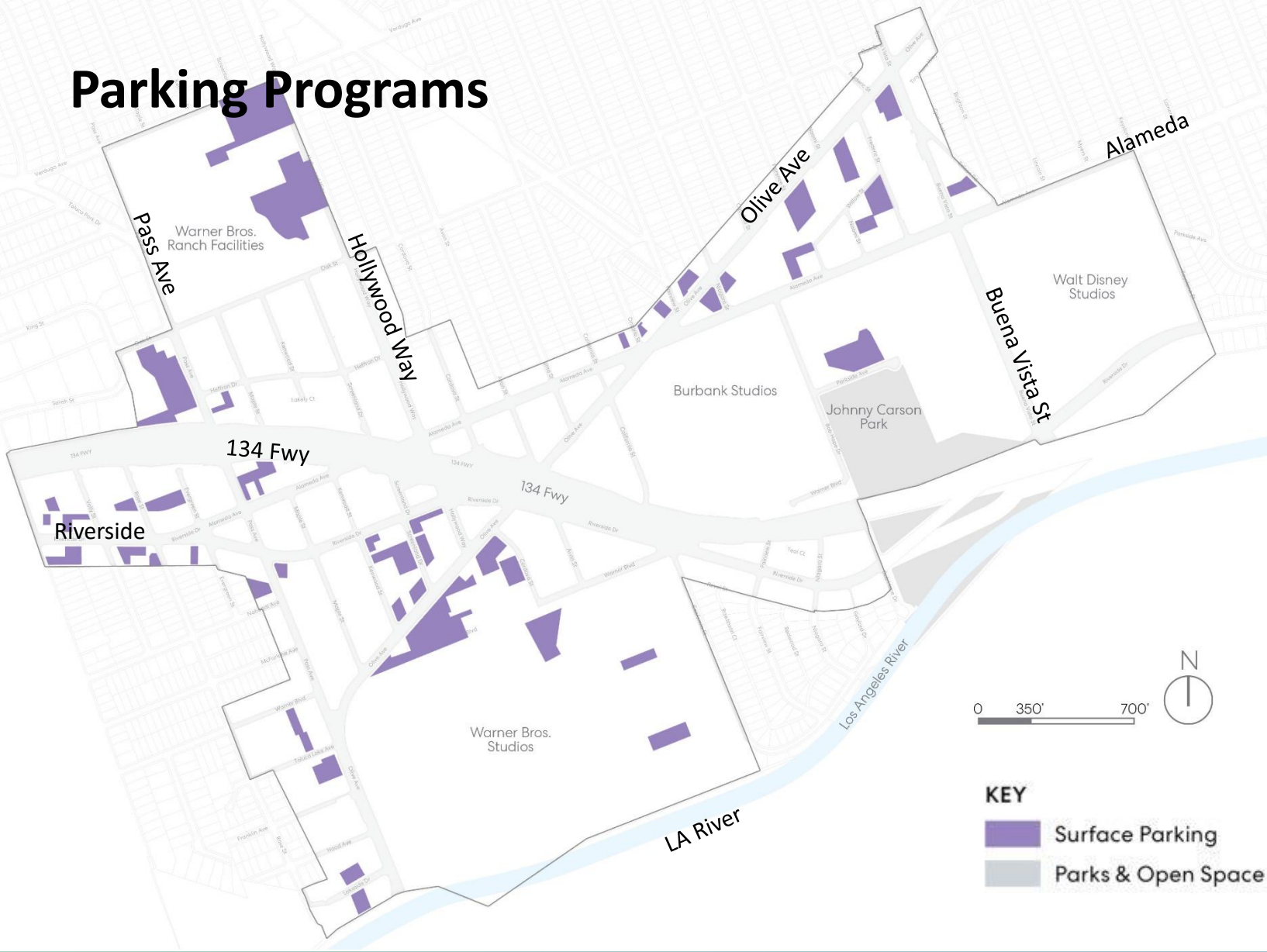
BURBANK
MEDIA DISTRICT
Specific Plan Update



BURBANK
MEDIA DISTRICT
Specific Plan Update



Parking Programs



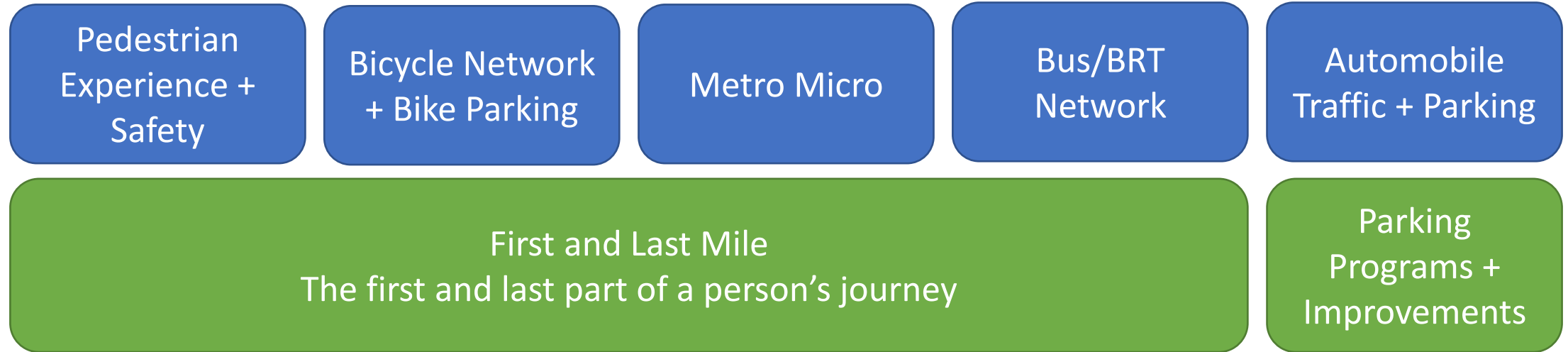
- Trade-offs between development and existing parking
- Shared Parking Agreements
 - Use by multiple companies
 - Carpool users
 - Public parking + private parking

Potential Transportation Recommendations

- Updated Transportation Demand Management (TDM) ordinance focused on maximizing the efficiency of the urban transport system using a wide range of measures including:
 - Public transport improvement
 - Promoting non-motorized transport
 - Parking management
- Updated Transportation Improvement Program (TIP) that advances:
 - Burbank's Complete Our Streets Plan and Bicycle Master Plan,
 - First-Lase Mile (FLM) transit and active transportation connections to Metrolink and future planned mobility station, and
 - Parking programs and improvements.
- Design guidelines and standards to improve the pedestrian environment



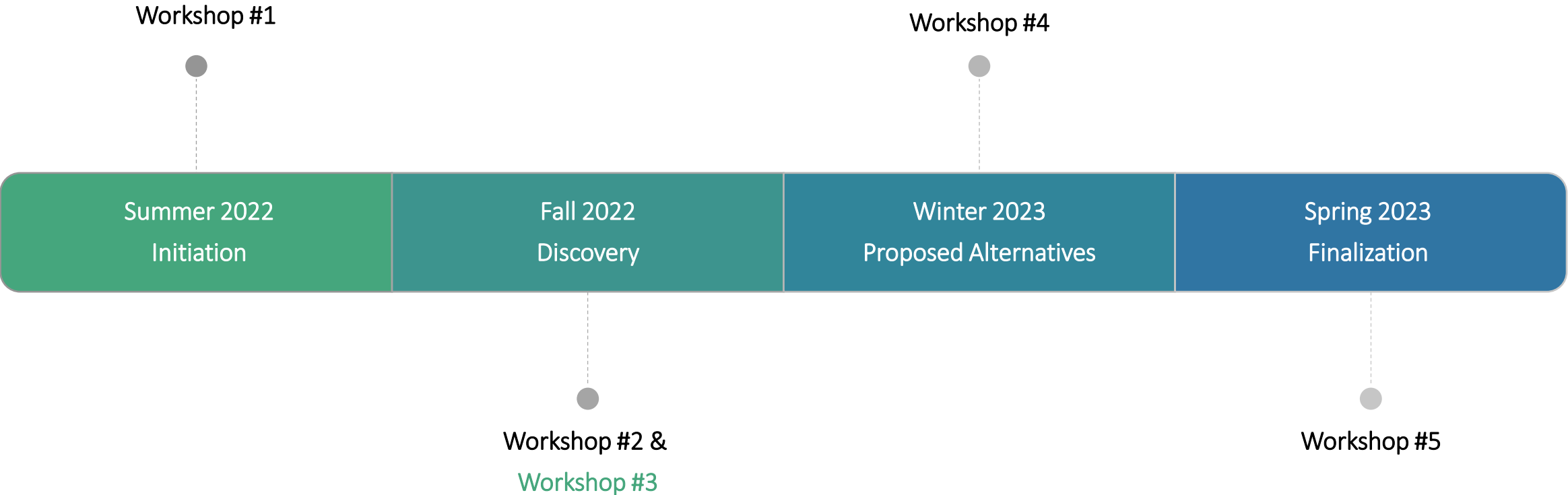
Supporting Complete Streets





Upcoming Engagement

Community Engagement Timeline



Public Workshop and Online Activities

How to Provide Input

- Use our online commenting tool at:
www.BurbankMediaDistrictSP.com
 - Place Type Survey
 - Mapping Activity: Development

Available Resources

- Project Fact Sheet
- Frequently Asked Questions
- Glossary of Technical Terms
- Presentations and stakeholder briefing recordings
- Project webpage includes a translation widget
- Sign up to join our mailing list for future updates
- Materials available in Spanish, Armenian, and English

Workshop #4: Proposed Alternatives
February 2023
Location: In Person



Q&A



Stay Connected

For more information, please contact:

Amanda Landry

Senior Planner

Community Development Department

alandry@burbankca.gov

(818) 238-5250

