



Central Mobility Hub

A Regional Transit Connection to the Airport

Public Meeting

September 8, 2022

Free Language Assistance



Ayuda gratuita con el idioma | Libreng Tulong sa Wika

Hỗ trợ ngôn ngữ miễn phí | 免费语言协助 | 免費語言協助

مک زبان رایگان | 무료 언어 지원 | مساعدة لغوية مجانية

無料の言語支援 | Бесплатная языковая помощь

Assistência linguística gratuita | मुफ्त भाषा सहायता

Assistance linguistique gratuite | ជំនួយភាសាឥតគិតថ្លៃ

ఉచిత భాషా సహాయం | ການຊ່ວຍເຫຼືອດ້ານພາສາພຣີ

Kaalmada Luqadda ee Bilaashka ah | Безкоштовна мовна допомога

LanguageAssistance@sandag.org | (619) 699-1900

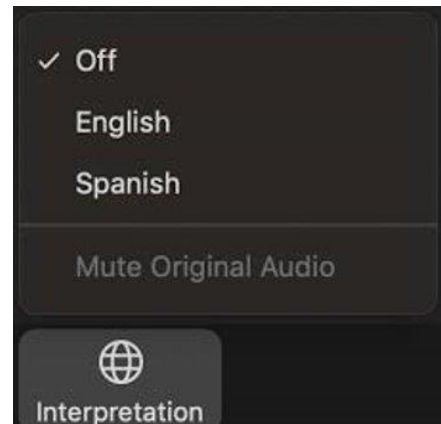
sandag.org/LanguageAssistance

Welcome! / ¡Bienvenidos!

- **For Spanish Interpretation:**

- Click “Interpretation” at bottom of screen
- Then, click on “Spanish”
- To hear only Spanish, click “mute original audio”
- If on a mobile app (cell phone, tablet, etc.), press the ellipsis (...), then Interpretation, and then choose your language

- **Spanish-translated presentation link in the chat**



- **Para Interpretación en Español:**

- Presione el botón de “Interpretación” en la parte inferior de la pantalla
- Después seleccione “Spanish”
- Para escuchar solo en español, haga clic en “callar audio original”
- Si utiliza una aplicación móvil (tel celular, tableta, etc.), presione los puntos suspensivos (...), después “Interpretación”, y después elija su idioma.

- **La presentación traducida al español sera compartida en el chat**

Virtual Meeting Guidelines

- This meeting will be recorded
- Microphones will be muted during the presentation
- You may share comments and ask questions via the Q&A function, which also will be recorded
- Opportunities to ask questions will be provided near the end of the presentation

Agenda



Central Mobility Hub



**Central Mobility Hub
Q&A**



**Connections to the
Wider Community**



Polls and Q&A

The background of the slide is a dark blue, semi-transparent aerial map of San Diego. The map shows the coastline on the left, with San Diego Bay and the city of San Diego visible. The surrounding mountainous terrain is also depicted. The text "Central Mobility Hub" is overlaid on this map in a large, white, sans-serif font.

Central Mobility Hub

Central Mobility Hub (CMH)



CMH Helps Achieve Key Goals of the 2021 Regional Plan



Provide intermodal transit connections



Increase equitable and inclusive transportation



Directly link transit to San Diego International Airport



Integrate pedestrians, bicyclists, and ride-share



Reduce environmental impacts



Increase jobs and tax base



Create an inviting new neighborhood



Provide San Diego an iconic public space

Project History

December 2018

SANDAG Board forms the Airport Connectivity Subcommittee

January 2020

SANDAG, City of San Diego, Airport, and Port sign Memorandum of Understanding to partner in identifying a solution for direct transit connection to the airport

December 2021

Two new Central Mobility Hub alternatives are presented to the SANDAG Board, following public input received during the environmental process

September 2019

SANDAG Board approves funding for preliminary environmental analysis and engineering

April 2021

Central Mobility Hub Notice of Preparation (NOP) is released with three alternatives and the public scoping process begins

May 2022

Update to SANDAG Board on project location and airport transit connections

ONGOING STAKEHOLDER ENGAGEMENT AND PARTNER COLLABORATION

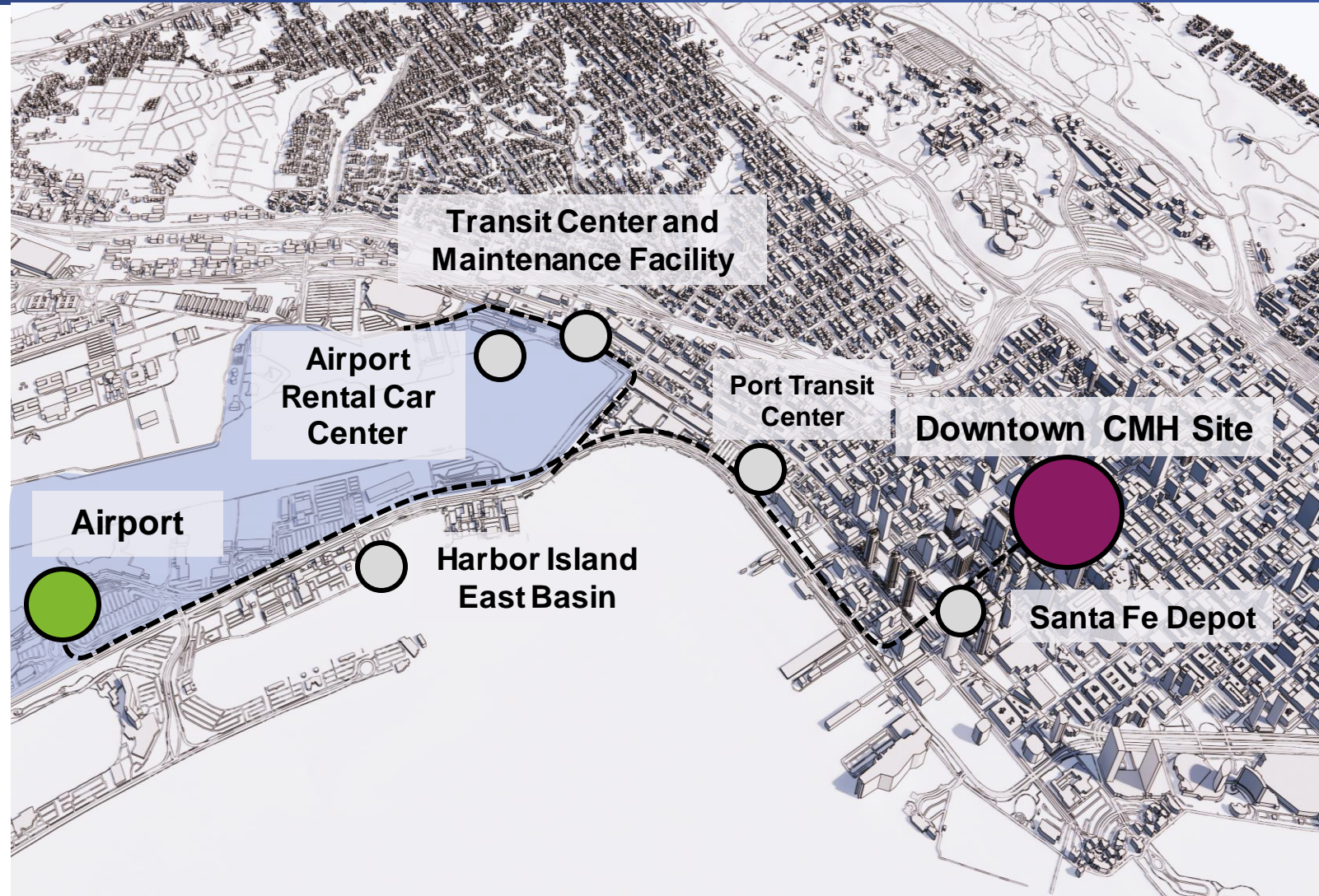
Downtown Location for CMH

Overview

- Downtown CMH with direct transit connection to the Airport and rental car center.
- Option enables future transit network expansion, including Trolley, future higher speed regional rail, rapid bus, and safer biking and walking options.

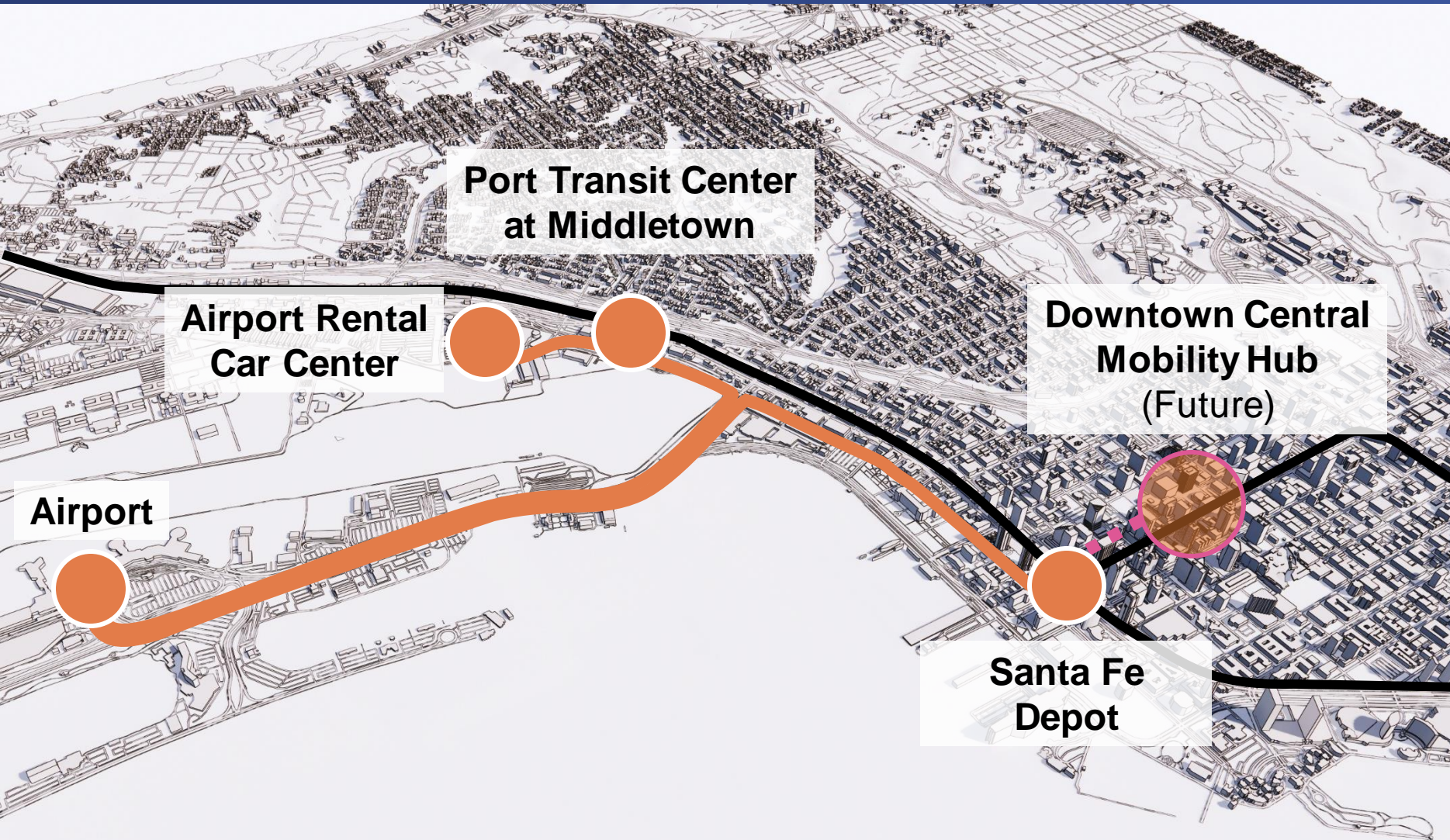
Status

- SANDAG studying viability of a potential downtown location in close collaboration with public stakeholders
- If downtown is determined to be a viable option, SANDAG may include it in the CEQA review as a new alternative



Note: Conceptual; specific locations have not been determined

Proposed Airport Transit Connection



Why Two Connections?

Addresses regional connection demands while solving transportation and congestion problems

Creates world class transit connection to airport and Port destinations

Connects to future and planned transit facilities and region's urban core

Responsive to community and stakeholder feedback

Airport Transit Connection

Options Included in Concept Study



MTS Trolley Extension Concept



Next Steps for Central Mobility Hub



Summer & Fall

- Prepare Airport Connectivity Concept Study
- Stakeholder Engagement and Technical Coordination

Fall

Present Concept Study to SANDAG Board

Late Fall/Winter

Release NOP for CEQA Scoping for Phase 1 –
Airport Transit Connection

Questions & Answers

If joining by **web**:

- Enter your question into the Q&A box, then click **Send**

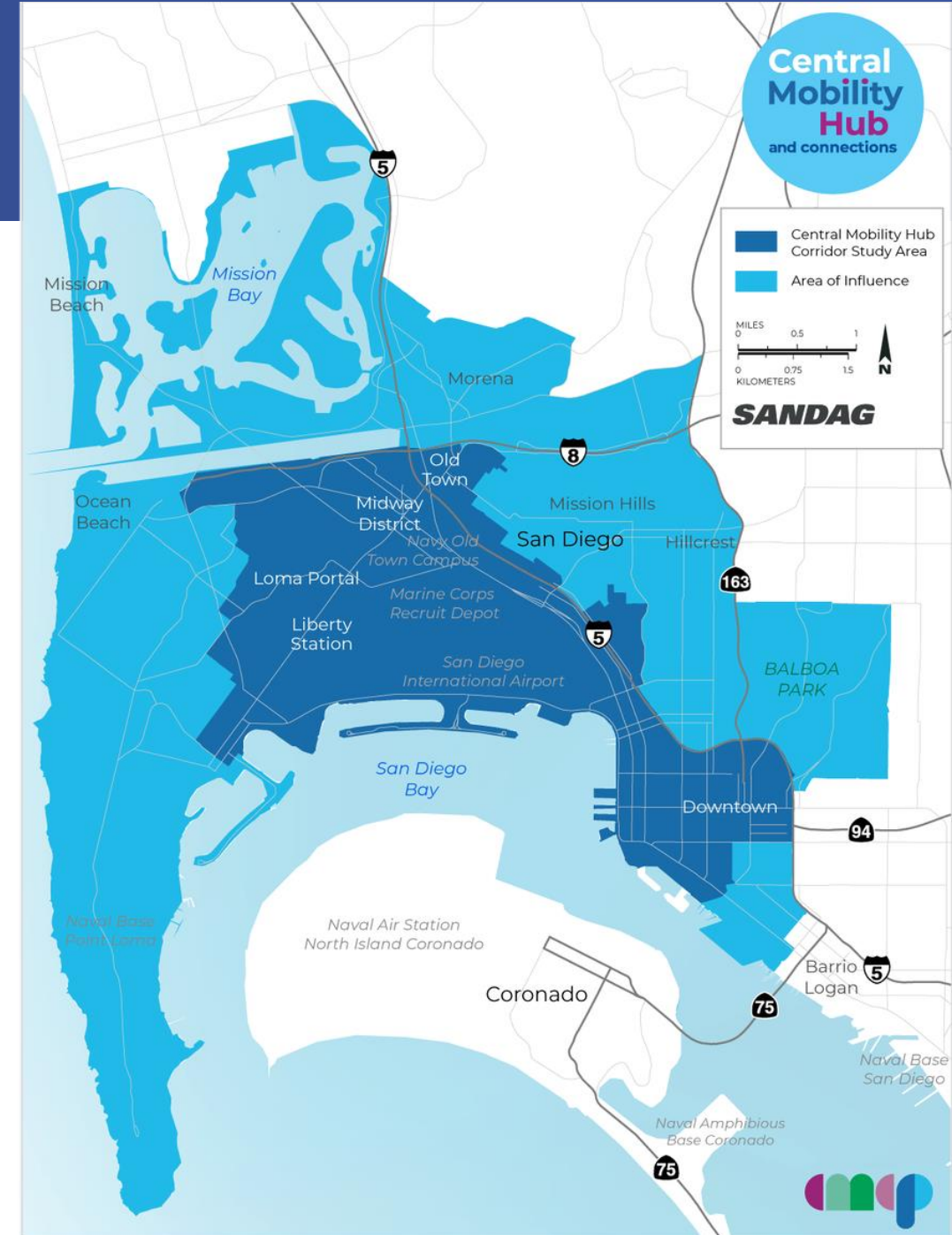
If joining by **phone**:

- **Dial *9** if you would like to ask a question
- When called on, **dial *6** to unmute

Central Mobility Hub & Connections

Central Mobility Hub & Connections

- Concurrent planning effort for Central Mobility Hub
- Multimodal transportation plan for areas around Central Mobility Hub and airport transit connections
- Build on 2021 Regional Plan and other local plans
- Eligibility for federal and state funding



Note: The area of influence represents the demographic and travel analysis developed from a larger census tract based area. Transportation solutions will be focused within the study area boundary.

Planning Efforts to Date

- Two public meetings
- Transportation solutions identified for communities including Midway/Pacific Highway, Peninsula, Ocean Beach
- Additional planning and technical review for areas surrounding Port Transit Center

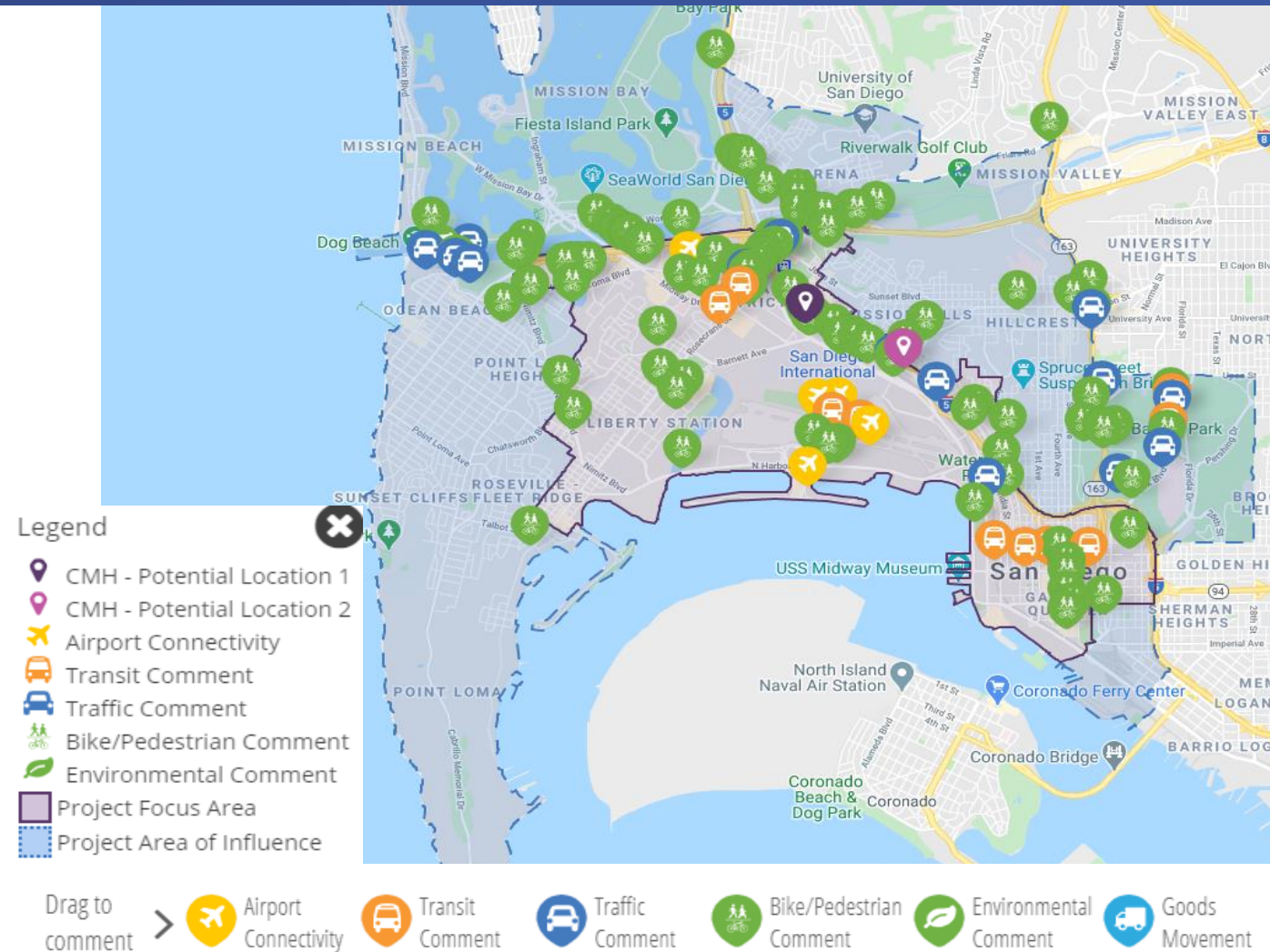
Voice of the Community

- **219 Interactive Map Comments**

- 138 Bike/Pedestrian
- 22 Traffic
- 24 Transit
- 13 Goods Movement
- 3 CMH Location
- 9 Airport Connectivity
- 7 Environmental
- 3 General Comment

- **182 Survey Responses**

- **34 Comment Forms**



Key Takeaways

Central Mobility Hub Experience

- Should be a welcoming community space
- Include a mix of uses
- Need bike amenities and electric vehicle charging stations
- Concern for long walking distances between modes
- Need space for freight/truck deliveries
- Needs to help reduce traffic congestion

Key Takeaways

Transportation Connections

- Protected bikeways along major arterials connecting to Central Mobility Hub
- Pedestrian safety improvements
- Improved transit connections to Midway, Downtown San Diego, and the airport
- Protected intersections for people walking and biking along corridors including University Ave., Nimitz Blvd., W. Point Loma Blvd., and Pacific Highway
- Concern for high vehicular speeds along major roads including Rosecrans St., Nimitz Blvd., Morena Blvd., and Sports Arena Blvd.

Mix of Transportation Options



Poll Question #1

What do you think is the most pressing issue that needs to be addressed as part of the Central Mobility Hub project?

- Improving traffic
- Reducing greenhouse gas emissions
- Creating additional public spaces
- Improving safety for people walking, biking, and riding transit
- Providing a direct transit connection to the airport
- Other (Post answer in Q&A box)

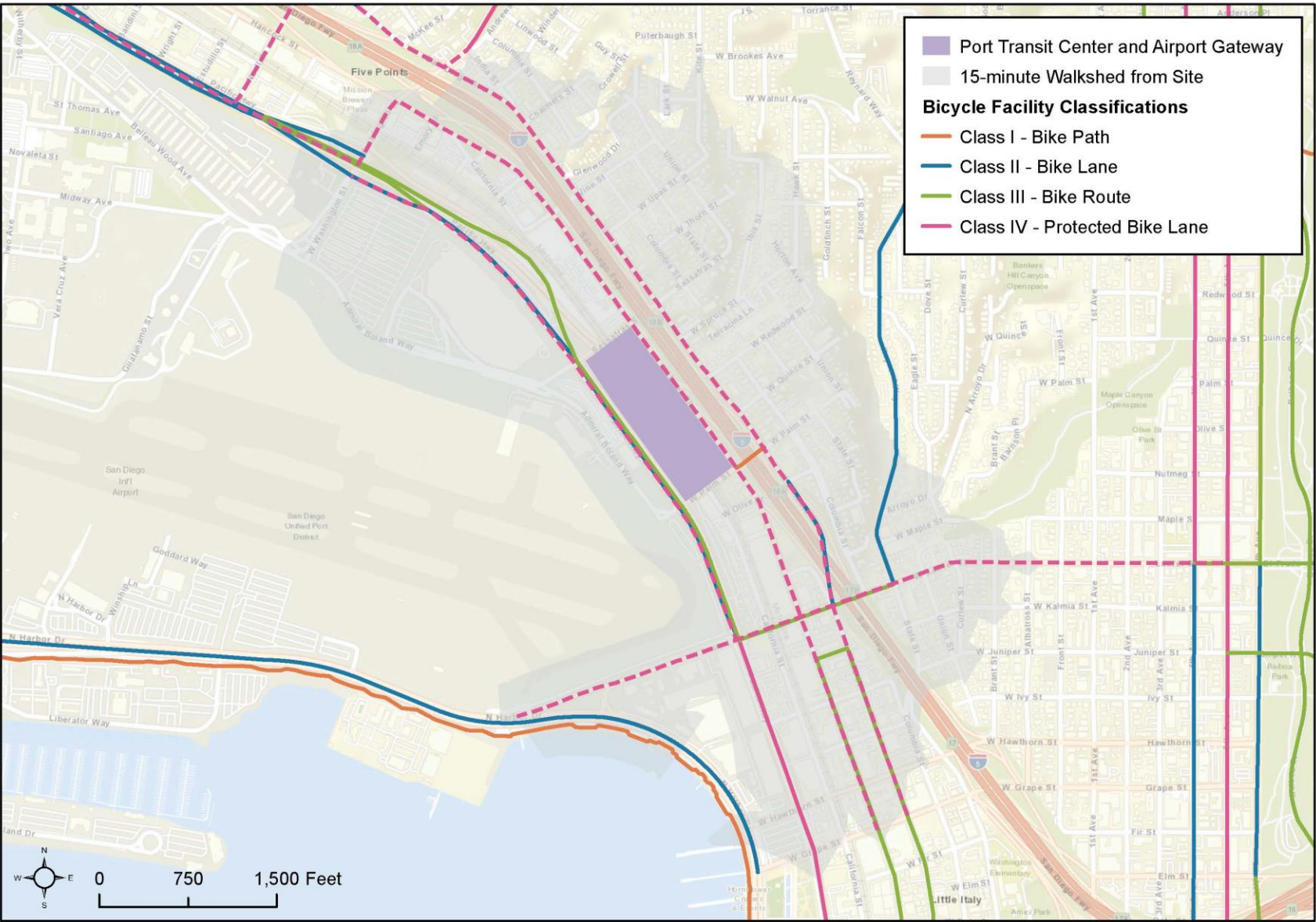
Port Transit Center at Middletown

Baseline Conditions Near the Site



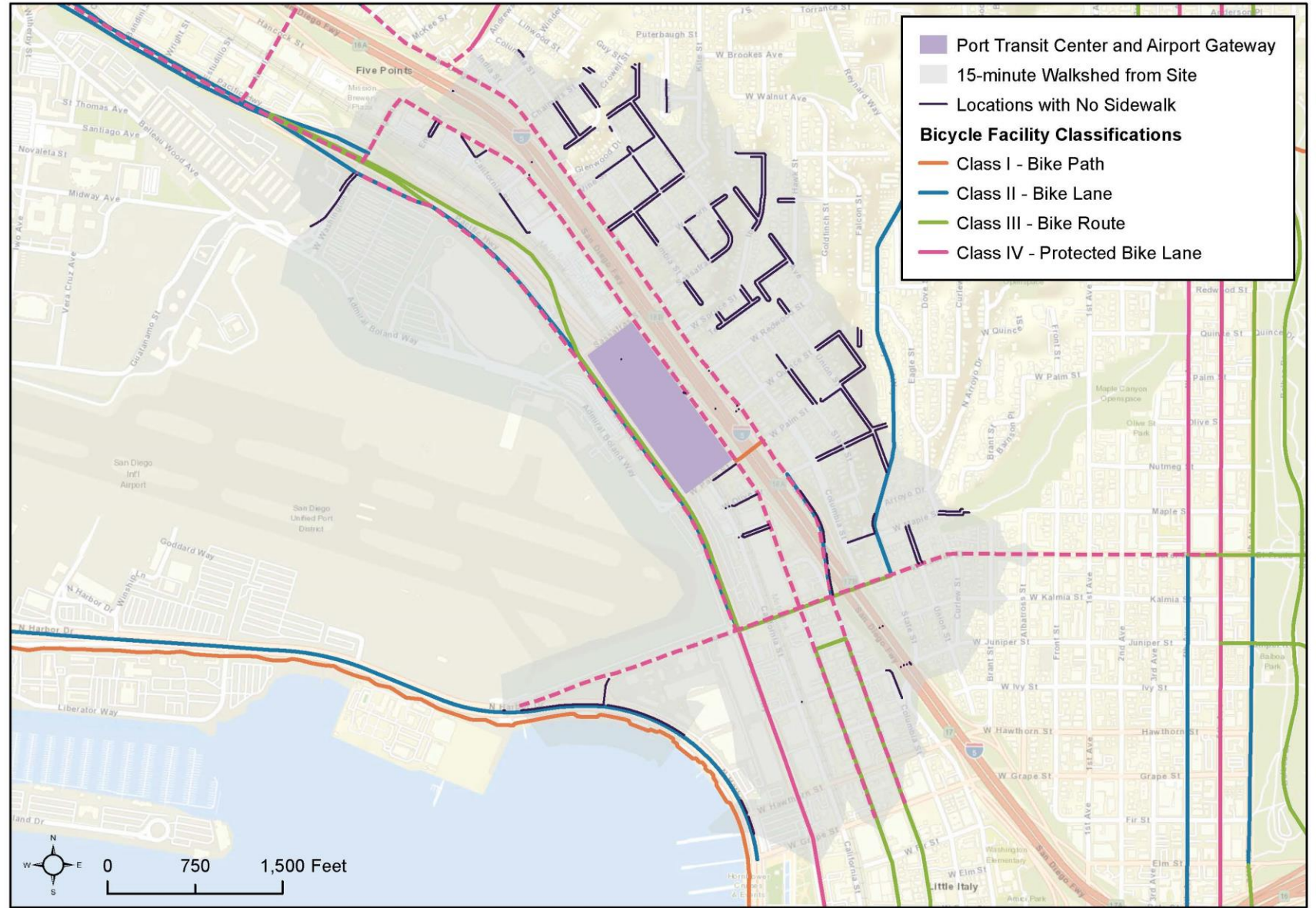
Port Transit Center at Middletown

Existing and Proposed Active Transportation Network



Port Transit Center at Middletown

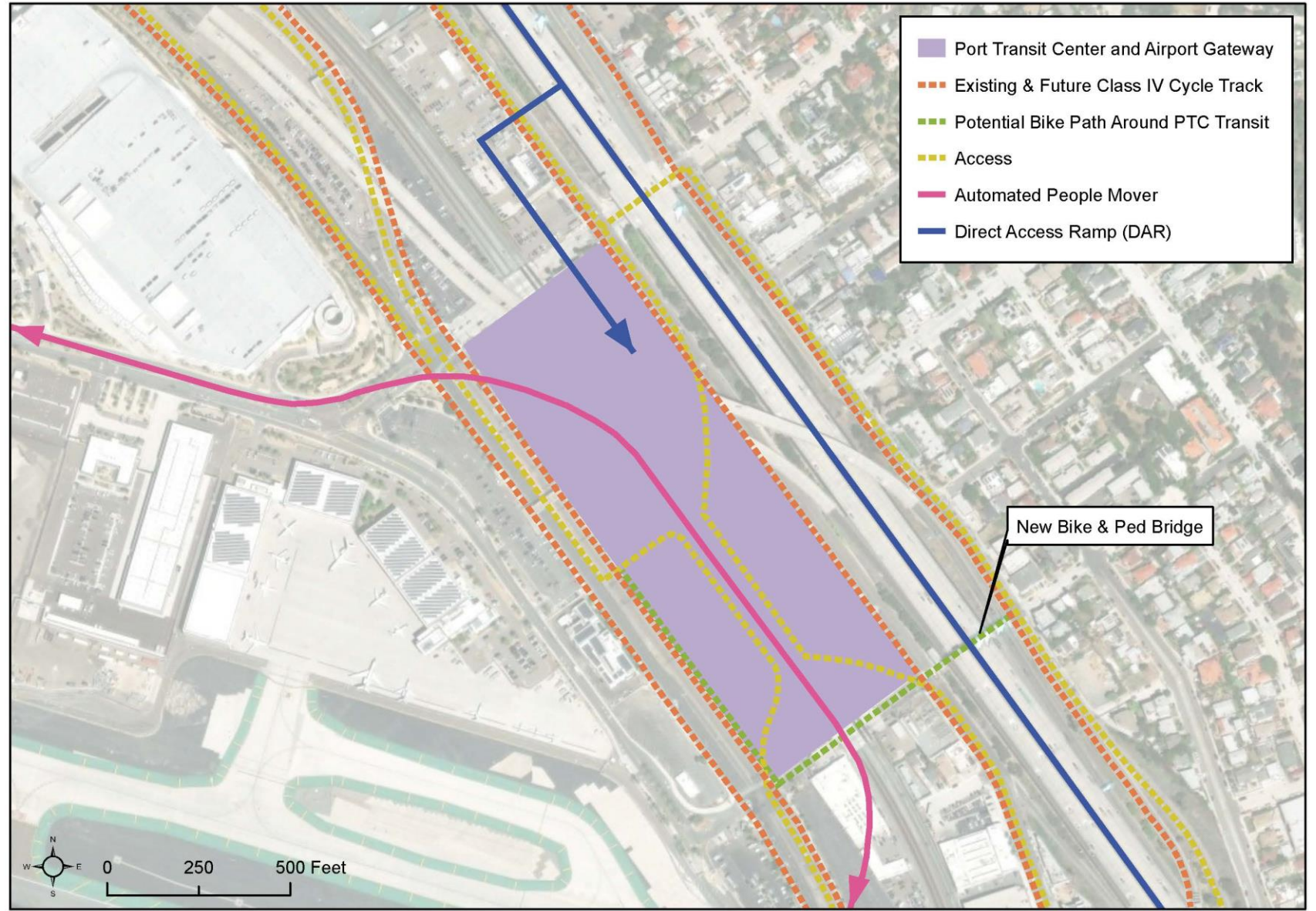
Existing and Proposed Active Transportation Network



Port Transit Center at Middletown

Key elements of the transit center include:

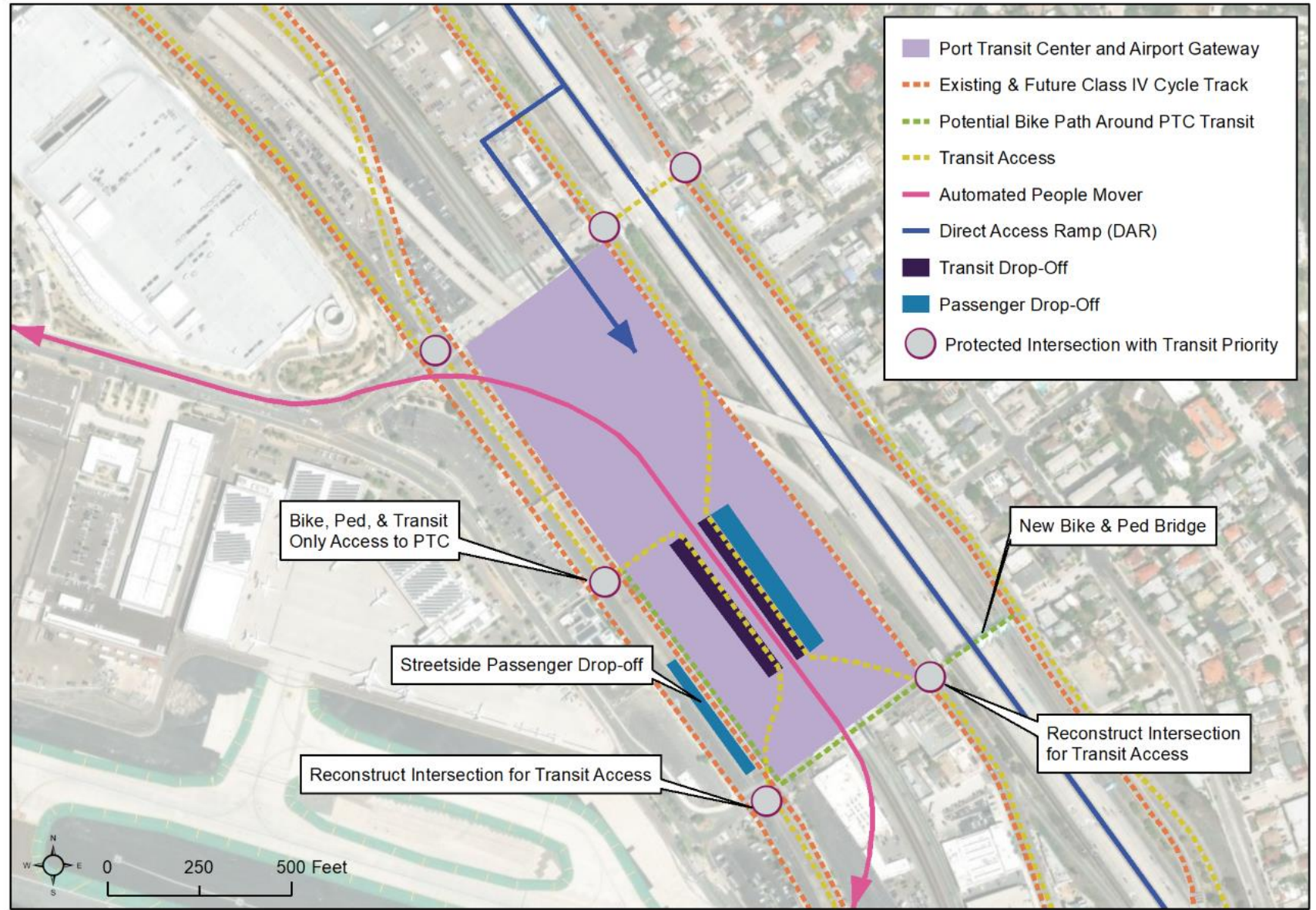
- Middletown Trolley Station
- I-5 Direct Access Ramp
- Passenger pick-up/drop-off
- Bike and active mobility
- Other transit modes
- Critical infrastructure support facilities
- Port land uses



Port Transit Center at Middletown

Key elements of the transit center include:

- Middletown Trolley Station
- I-5 Direct Access Ramp
- Passenger pick-up/drop-off
- Bike and active mobility
- Other transit modes
- Critical infrastructure support facilities
- Port land uses



Poll Question #2

With the improvements proposed as part of the Central Mobility Hub project, what types of alternative transportation options are you most likely to use to get to the airport? (Select all that apply.)

- People Mover or Trolley
- Rapid Bus or Local Bus
- Bike/eBike (includes personal or shared bikes/scooters)
- Walk
- On-demand shuttles (e.g., rideshare, microtransit)
- Other (Post answer in Q&A box)

Previously Incorporated Network

Trolley and Bus Rapid Transit

- Old Town Transit Center

Trolley

- Port Transit Center (Middletown)

Bus Rapid Transit

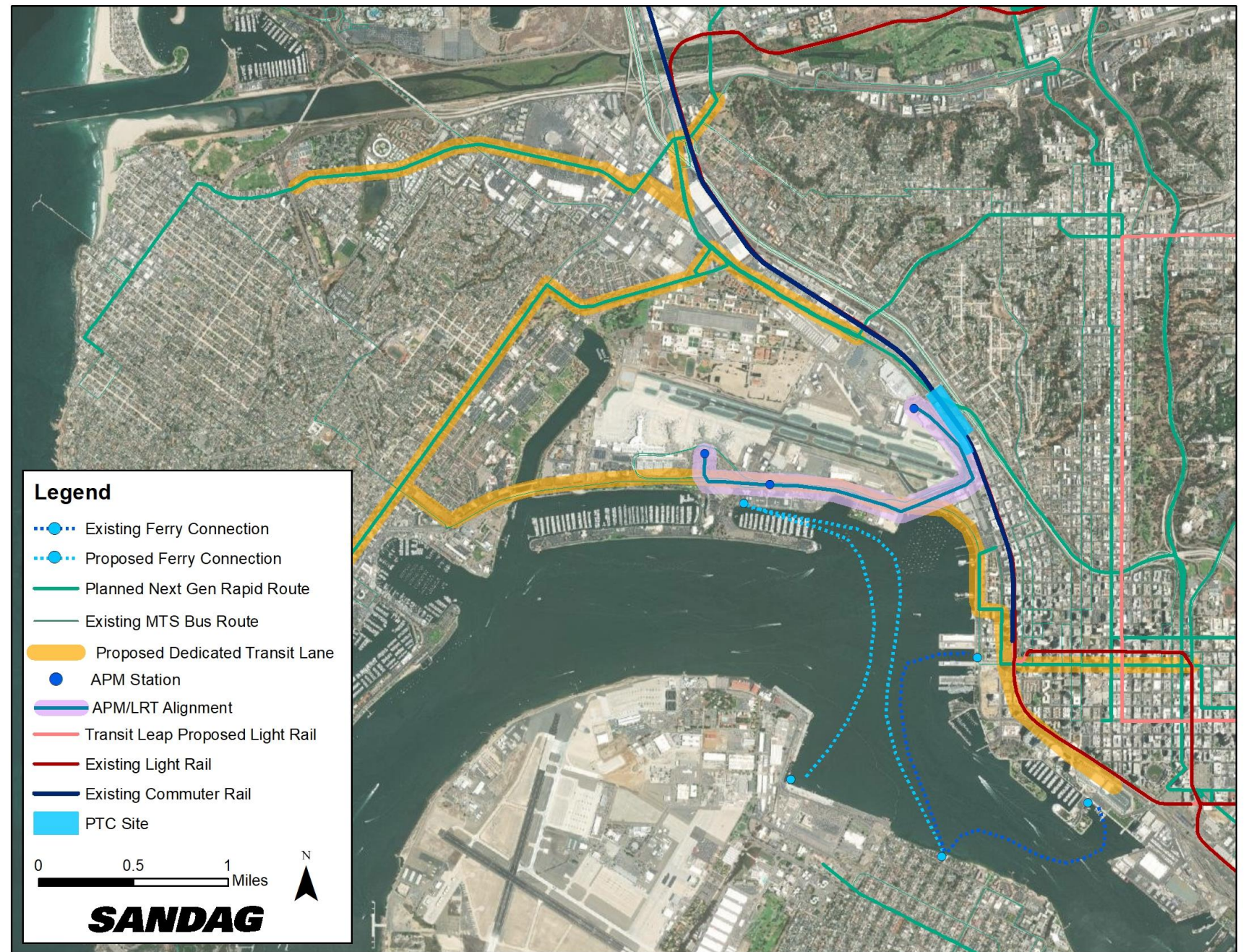
- Liberty Station
- Dutch Flats
- Marine Corps Recruit Depot
- Sports Arena/Midway
- Ocean Beach
- Point Loma

Automated People Mover or Trolley

- Airport
- Harbor Island

Automated People Mover

- Car Rental Center



Concept 1 – Spur Along Pacific Highway

Trolley and Bus Rapid Transit

- Old Town Transit Center
- Port Transit Center (Middletown)

Bus Rapid Transit

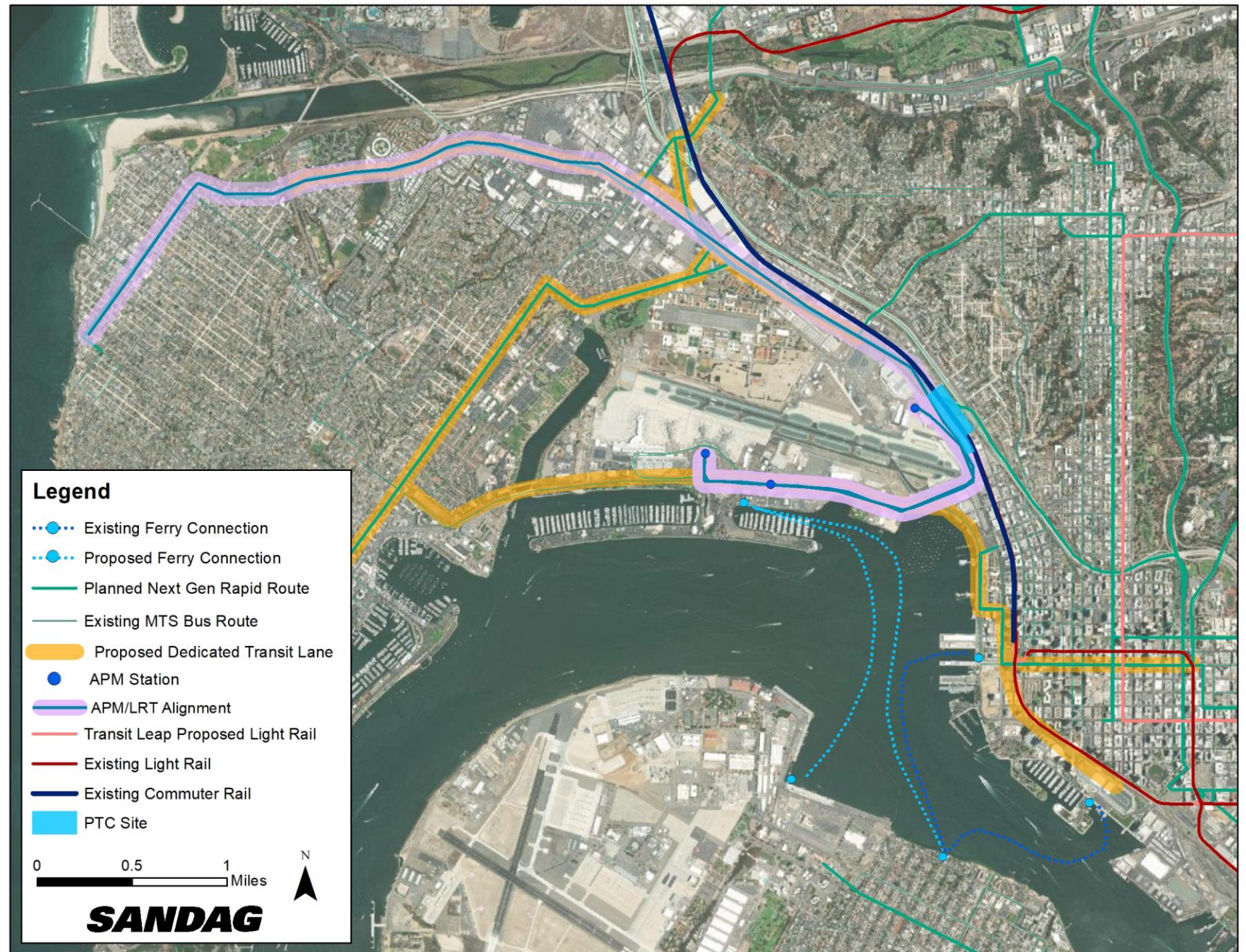
- Liberty Station
- Dutch Flats
- Marine Corps Recruit Depot
- Point Loma

Automated People Mover or Trolley

- Sports Arena District
- Ocean Beach
- Harbor Island
- Airport

Automated People Mover

- Car Rental Center



Concept 2 – Closed-Loop People Mover

Trolley and Bus Rapid Transit

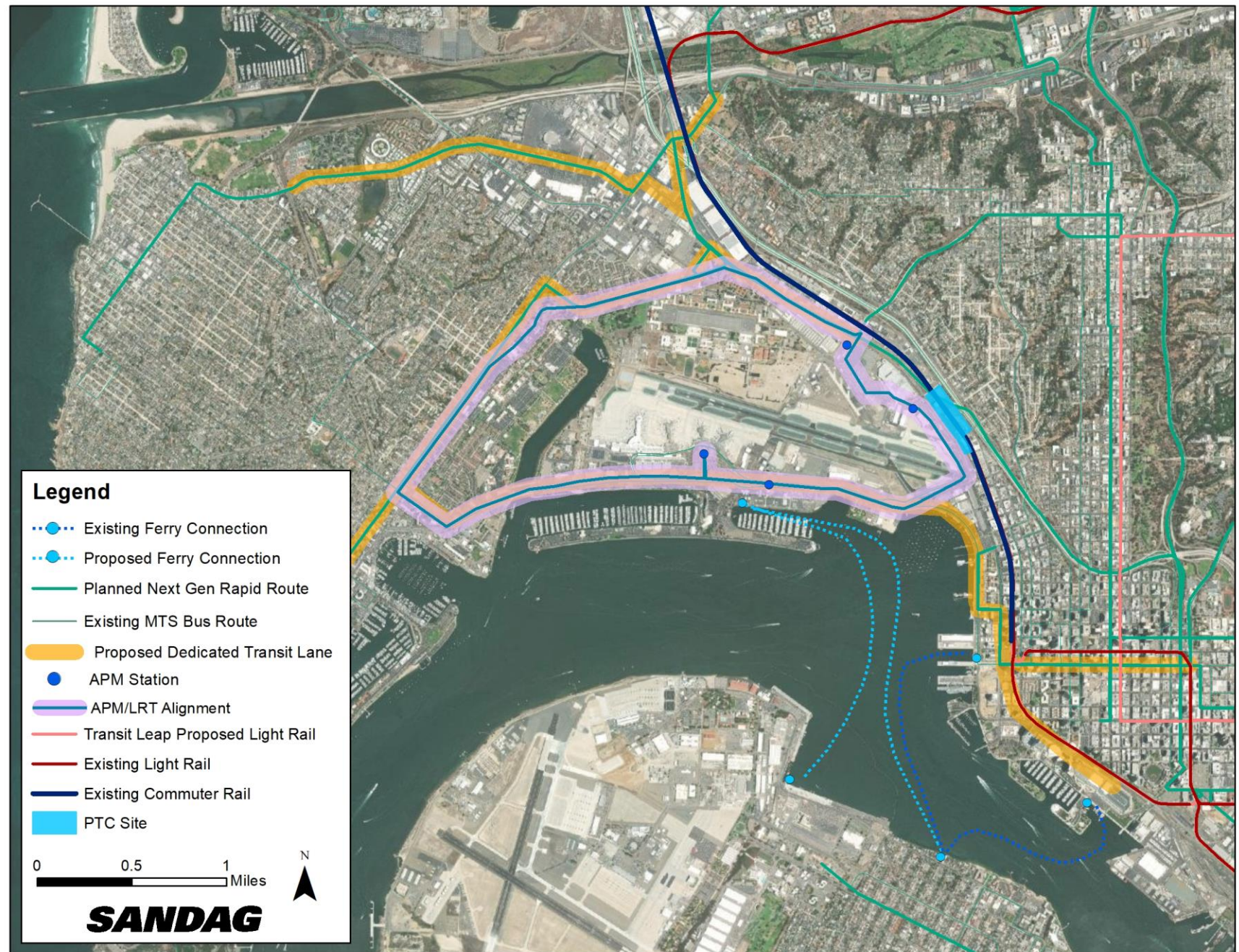
- Old Town Transit Center
- Port Transit Center (Middletown)

Bus Rapid Transit

- Sports Arena
- Ocean Beach
- Dutch Flats
- Marine Corps Recruit Depot
- Liberty Station
- Point Loma

Automated People Mover

- Airport
- Liberty Station
- Rental Car Center
- Harbor Island



Poll Question #3

What improvements are most important to you as part of the Central Mobility Hub project? (Select your top three.)

- Increase in safer, more protected bikeways
- More attractive, safer pedestrian walkways
- Direct transit to the airport
- Less congestion on the surrounding roadways
- More housing near transit stops and bikeways
- More on-demand transit & shared ride options
- More public spaces (e.g., plazas, promenades)
- Other (Post answer in Q&A box)

Poll Question #4

On a scale of 1 (lowest) to 5 (highest), how effective do you think the strategies presented will be in getting people to use the Port Transit Center and take transit and other alternative travel options?



Questions & Answers

If joining by **web**:

- Enter your question into the Q&A box, then click **Send**

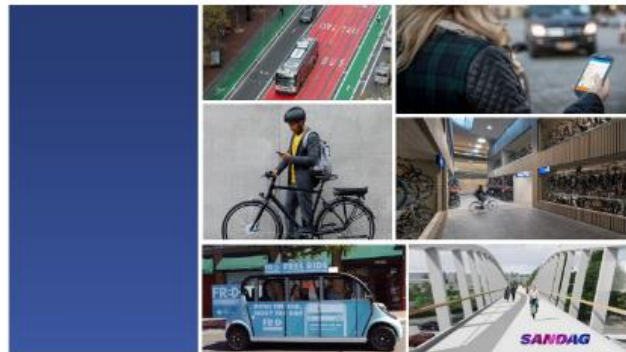
If joining by **phone**:

- **Dial *9** if you would like to ask a question
- When called on, **dial *6** to unmute

Virtual Engagement Site

Share Your Feedback With Us

Opportunities to share your opinion



Transportation Priorities Survey

We invite you to share your input on transportation priorities

START 8 Sep 2022

Take The Survey



Port Transit Center Survey

We invite you to share your input on the Port Transit Center at Middletown

START 8 Sep 2022

Take The Survey



Transportation Network from the Port Transit Center Survey

We invite you to share your input on the proposed concepts for an extended transportation network from the Port Transit Center at Middletown.

START 8 Sep 2022

Take The Survey

Visit sandag.mysocialpinpoint.com/CMHandConnections
Comments accepted through September 22, 2022

Stay Connected

➤ Explore the Central Mobility Hub website
SANDAG.org/CentralMobilityHub

🔍 Follow us on social media:
@SANDAGregion @SANDAG

✉ Email: **CentralMobilityHub@sandag.org**

SANDAG