



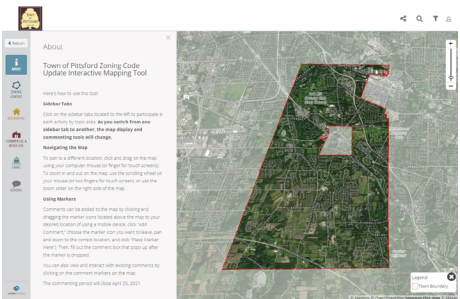
Interactive Map Summary

Town of Pittsford
2021 Zoning Code Update

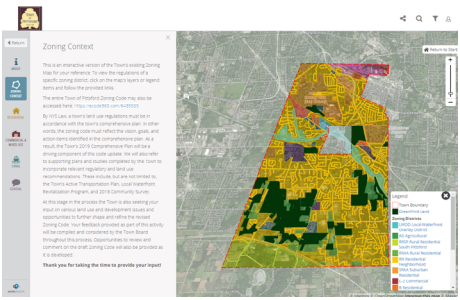
Comments Collected: March 13 - May 24, 2021

June 1, 2021

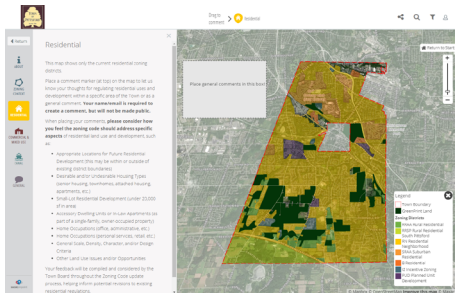
Prepared by: **Barton
&Loguidice**



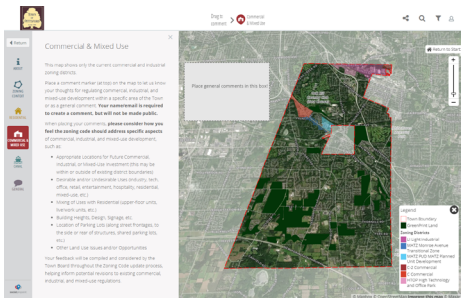
Step 1: About



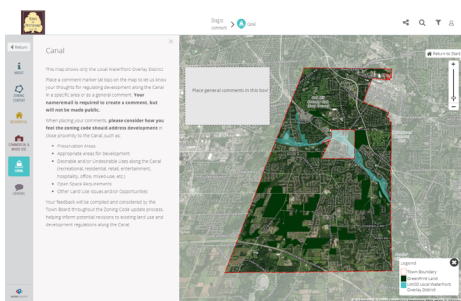
Step 2: Zoning Context



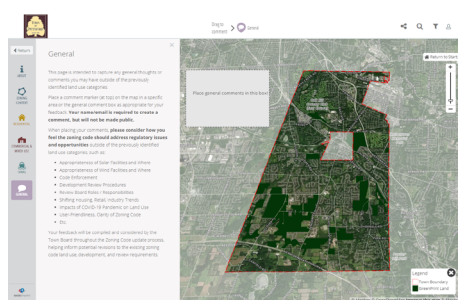
Step 3: Residential



Step 4: Commercial & Mixed Use



Step 5: Canal



Step 6: General

The Interactive Map

An integral component of updating the Town of Pittsford’s Zoning Code is collecting and incorporating public input. In order to effectively gather public input at the beginning of the project, the Town of Pittsford launched an Interactive Map at the public Zoning Workshop held on March 13, 2021. The Map was advertised by the Town through social media posts following the Workshop, and the Map was left open for comments through May 24, 2021.

The Interactive Map was separated into six steps; the first two steps served as an educational tool and the third, fourth, fifth, and sixth steps served as a public input collection tool. Each of the steps is summarized in the table below and images to the left.

Step 1: About Provided the user with instructions on how to navigate and use the Interactive Map

Step 2: Zoning Context Included a map of the Town’s existing zoning districts and provided links to the Zoning Code so that users could read each district’s regulations

Step 3: Residential Included a map of the Town’s existing residential zoning districts, and prompted users to leave comments on their preferences for future residential development

Step 4: Commercial & Mixed Use Included a map of the Town’s existing commercial and mixed use zoning districts, and prompted users to leave comments on their preferences for future commercial and mixed use development

Step 5: Canal Included a map of the Town’s Local Waterfront Overlay District, and prompted users to leave comments on their preferences for future canal development

Step 6: General Included a map of the Town’s boundary, and prompted users to leave comments on other aspects of the zoning code outside of the three previously identified land use categories

The complete discussion prompts included in Steps 3-6 are provided on the following page.

Discussion Prompts

Step 1: Residential

When placing your comments, please consider how you feel the zoning code should address specific aspects of residential land use and development, such as:

- Appropriate Locations for Future Residential Development (this may be within or outside of existing district boundaries)
- Desirable and/or Undesirable Housing Types (senior housing, townhomes, attached housing, apartments, etc.)
- Small-Lot Residential Development (under 20,000 sf in area)
- Accessory Dwelling Units or In-Law Apartments (as part of a single-family, owner-occupied property)
- Home Occupations (office, administrative, etc.)
- Home Occupations (personal services, retail, etc.)
- General Scale, Density, Character, and/or Design Criteria
- Other Land Use Issues and/or Opportunities

Step 2: Commercial & Mixed Use

When placing your comments, please consider how you feel the zoning code should address specific aspects of commercial, industrial, and mixed-use development, such as:

- Appropriate Locations for Future Commercial, Industrial, or Mixed-Use Investment (this may be within or outside of existing district boundaries)
- Desirable and/or Undesirable Uses (industry, tech, office, retail, entertainment, hospitality, residential, mixed-use, etc.)
- Mixing of Uses with Residential (upper-floor units, live/work units, etc.)
- Building Heights, Design, Signage, etc.
- Location of Parking Lots (along street frontages, to the side or rear of structures, shared parking lots, etc.)
- Other Land Use Issues and/or Opportunities

Step 3: Canal

When placing your comments, please consider how you feel the zoning code should address development in close proximity to the Canal, such as:

- Preservation Areas
- Appropriate Areas for Development
- Desirable and/or Undesirable Uses along the Canal (recreational, residential, retail, entertainment, hospitality, office, mixed-use, etc.)
- Open Space Requirements
- Other Land Use Issues and/or Opportunities

Step 4: General

When placing your comments, please consider how you feel the zoning code should address regulatory issues and opportunities outside of the previously identified land use categories, such as:

- Appropriateness of Solar Facilities and Where
- Appropriateness of Wind Facilities and Where
- Code Enforcement
- Development Review Procedures
- Review Board Roles / Responsibilities
- Shifting Housing, Retail, Industry Trends
- Impacts of COVID-19 Pandemic on Land Use
- User-Friendliness, Clarity of Zoning Code
- Etc.

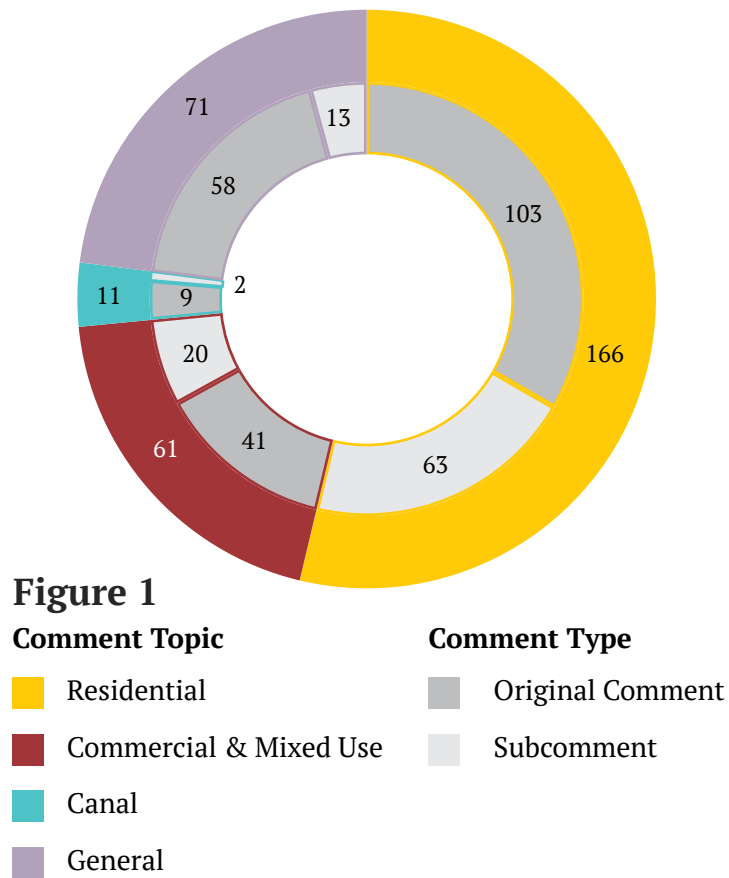


Figure 1

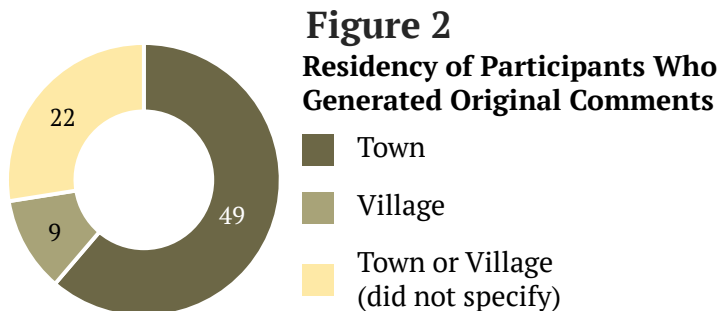
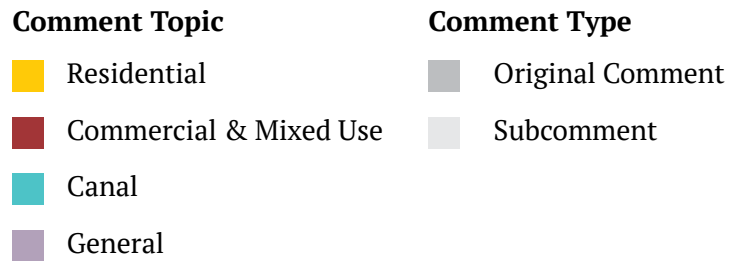
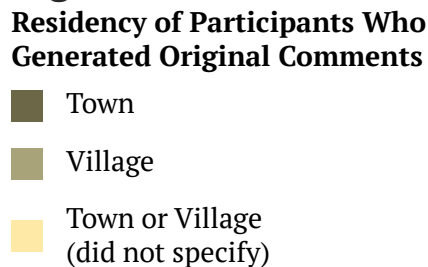


Figure 2



Map Responses

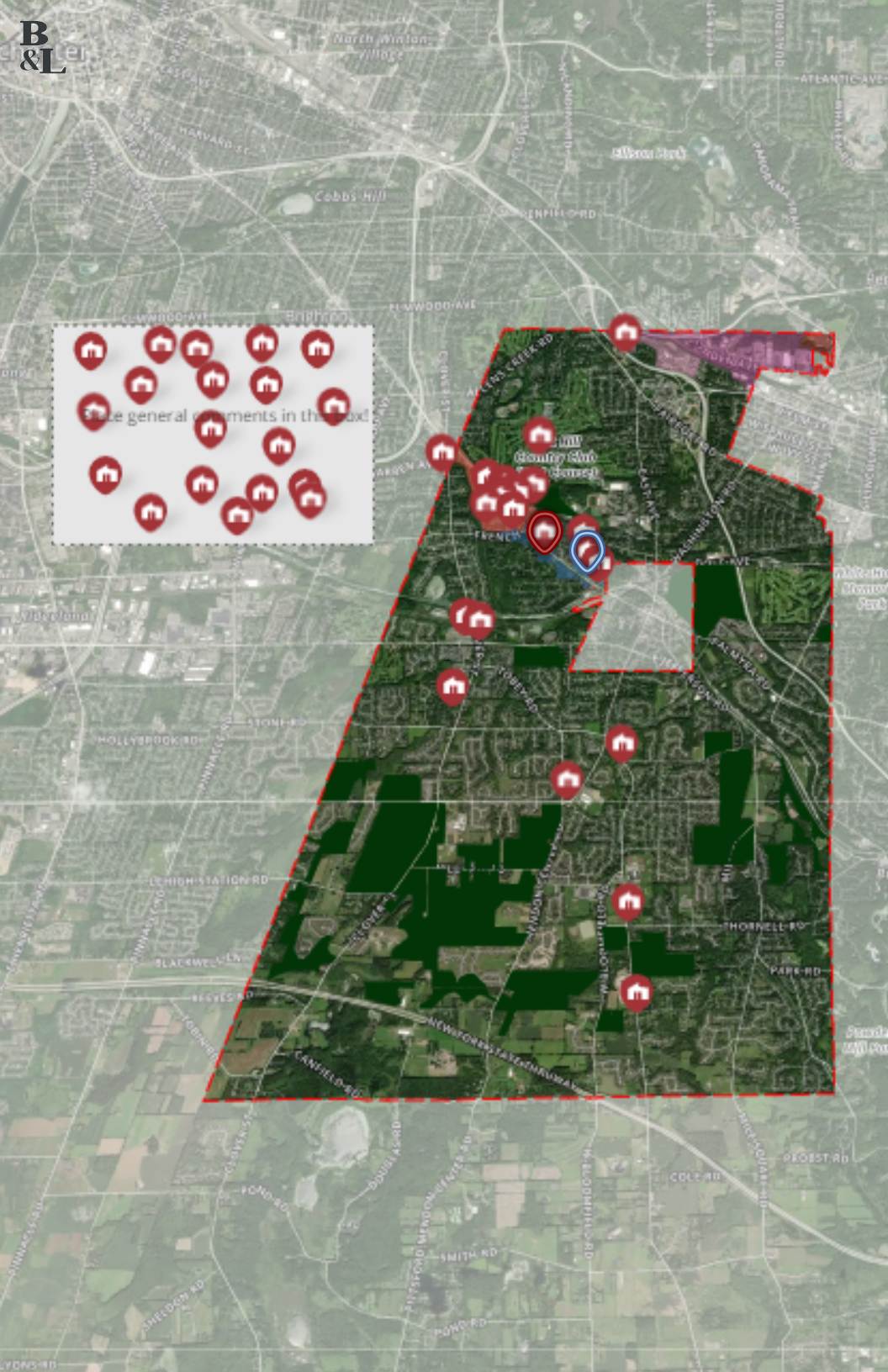
Over the course of the commenting period, 309 comments were generated on the Interactive Map. Of the 309 comments, 68% were original comments and 32% were subcomments. Original comments are generated when a participant drags a comment marker onto the map and leaves a note. Subcomments are generated when a participant replies to an original comment as part of a discussion thread.

As described on Page 2, the Interactive Map was separated into four steps (Steps 3-6) through which participants were prompted to provide input on four categories: Residential, Commercial & Mixed Use, Canal, and General (i.e. other). The majority of comments (54%) were generated in the Residential step of the Interactive Map. 23% of comments were generated in the General step, 20% in the Commercial & Mixed Use step, and only 4% in the Canal step (Figure 1).

A total of 104 unique individuals participated in the Interactive Map. Of these 104, 80 had left an original comment(s) and 24 had only left a subcomment(s). To generate an original comment, participants were required to indicate their place of residency. Out of the 80 participants who left original comments, 61% were Town residents, 11% were Village residents, and 28% were residents of Pittsford but did not distinguish between the Town and Village. None indicated that they were neither a resident of the Town of Village of Pittsford (Figure 2).

Summaries of the comments left on each Steps 3-6 of the Interactive Map are provided on the following pages. A comprehensive and detailed list of all the comments provided on the Interactive Map is provided in the Appendix. Personal information has been redacted to maintain privacy.

Note: Numbers in above figures represent actual counts, not percentages.



Commercial & Mixed Use

Key Themes

A review of all original comments and subcomments on the Commercial & Mixed Use step revealed the following key themes:

- Support for sustainable building practices and use of renewable energy
- Support for additional tree plantings and integrating green infrastructure
- Desire for more small commercial uses in residential areas, but concern regarding their impact on community character and ability to thrive economically
- Conflicting opinions on permitting mixed-use development; while some residents feel it would improve walkability and expand housing and business opportunities, others feel it would change the character of Pittsford and/or worsen traffic

Geographic Clusters

Clusters of comments with similar themes were received in the following general locations:

Mendon Center Rd & Pittsford-Mendon Rd: Residential areas in the southern half of the Town would be well served by introducing small, neighborhood-friendly businesses, such as convenience stores and cafes.

Clover St & Jefferson Rd: This area lacks adequate access to a gas station.

Monroe Ave: This corridor could be enhanced through investments in landscaping and active transportation amenities (see the Monroe Avenue Design Guidelines).

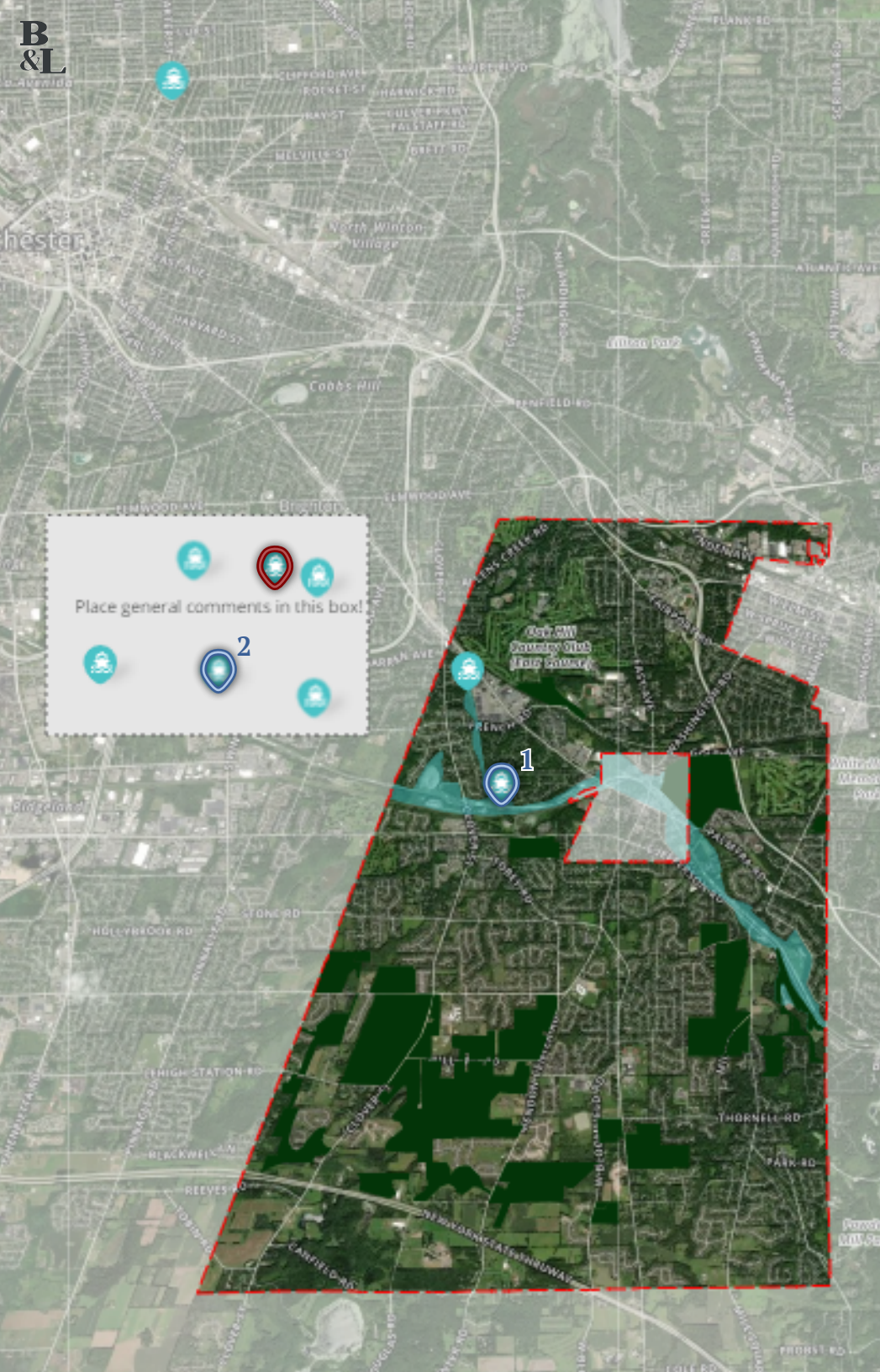
Most Agreeable & Disagreeable Comments

Modify the zoning regulation to prohibit any LED or neon illuminated signage on the buildings in the MATZ Zone. This zoning was created to buffer the heavy commercial area further down Monroe Ave and to keep it consistent with the transition between Pittsford Plaza and the Village line. Neon and LED Building signage is not appropriate with the other mixed use in this area.

Upvotes: 17 | Downvotes: 0

Some 3 or 4 story buildings would be ok along Monroe Ave.

Upvotes: 5 | Downvotes: 21



Canal

Key Themes

A review of all original comments and subcomments on the Canal step revealed the following key themes:

- Support for ice skating on the canal and other winter activities
- Desire for more day-to-day gathering spots along the canal, such as fire pits and picnic tables
- Preference for keeping the canal area a public resource, rather than becoming developed with residential and commercial uses

Geographic Clusters

Two comments were placed in the following locations on the map:

The Rail Loop: This path should be preserved.

The Canal: Future uses along the canal should not negatively impact existing neighborhoods.

Most Agreeable & Disagreeable Comments

Insure future uses of land adjacent to the Canal do not negativity impact existing neighborhoods

Upvotes: 11 | Downvotes: 0

1

Would like to see more opportunities for families to gather near the canal. Summer concerts are great, but fire pits in winter and places where families can meet and hang out.

Upvotes: 11 | Downvotes: 0

2

Would love to see more picnic tables along the canal and maybe the ability for permitted street vendors to sell from carts at certain places along the canal. How great would it be to stop for a soda, hot dog, donut, taco or something as you walk or bike along the canal?

Upvotes: 0
Downvotes: 3



General

Key Themes

A review of all original comments and subcomments on the General step revealed the following key themes:

- Desire for more pedestrian and bicycle amenities and/or trails as a safety measure and to better connect neighborhoods and community resources
- Desire for the preservation of trees and planting of native species
- Support for sustainable building practices and renewable energy systems, especially as they relate to climate change
- Desire to establish new parks and enhance existing parks through landscaping, paths, signage, and other amenities
- General support for affordable housing options and accessory dwelling units, but also some opposition related to the impact on property values and public resources

Geographic Clusters

Clusters of comments with similar themes were received in the following general locations:

Jefferson Rd & Thornell Rd: This corridor would benefit from traffic calming and pedestrian amenities to improve safety along the right-of-way.

Pittsford-Mendon Rd & Van Voorhis Rd: This area near the school would benefit from the addition of sidewalks.

Most Agreeable & Disagreeable Comments

Any Commercial development should preserve and enhance the Auburn Trail.

Upvotes: 16
Downvotes: 0

In residential zones, trees removed that are greater than 8" diameter (measured 48" above ground) be replaced on the property with a 2" diameter tree.

Solar panel installation should be specifically discussed during SEQR evaluation including elevated installation in parking lots.

The Town limits tax exempt properties to the total assessed value of tax exempt properties in year 2020. ie- no more tax exempt property. Tax exempt properties sold would revert to taxable upon sale or transfer.

Upvotes: 0 | Downvotes: 8



Interactive Map Summary Appendix

Town of Pittsford
2021 Zoning Code Update

Comments Collected: March 13 - May 24, 2021

June 1, 2021

Prepared by: **Barton
& Loguidice**

Residential

Thread ID	Thread Type	Comment	Upvotes	Downvotes	Latitude	Longitude	Date & Time	Notes
2	Original Comment	single family "attached" homes marketed to seniors currently being built here. Attached is like a townhouse but only 2 units.	0	5	43.04704	-77.518759	3/17/2021 15:47	
2	Subcomment	These single family units of seniors require at least one car at a time when older folks are driving less.	0	2	43.04704	-77.518759	3/21/2021 14:50	
2	Subcomment	These units would be well served by extending crosswalks south of Thornell Road. And possibly adding a bus stop.	2	0	43.04704	-77.518759	3/22/2021 7:36	
2	Subcomment	Concern about the traffic on Mendon Rd and speed of traffic adding elders pulling in and out of this development, combined with the teen drivers from the high school. There are already many car parts scattered near the Van Voorhis cross street. The north bound road speed is high.	1	0	43.04704	-77.518759	3/27/2021 14:19	
2	Subcomment	The average price of these is now middle 400k. So not really marketed to seniors.	0	0	43.04704	-77.518759	4/28/2021 5:28	
2	Subcomment	It is beyond me why police do not sit in front of the schools during dismissal or at least sit in a common area to get people & kids to slow down. This section is on a hill & people go about 65-70 mph in front of van voorhis	1	0	43.04704	-77.518759	4/28/2021 6:04	
3	Original Comment	The potential future development of the (approximately) 5 acre parcel to the north side of Evergreen Lane has been carefully considered in past planning (I believe the parcel served as an example of how such development would be managed/regulated). I hope future planning continues to carefully consider the impact of developing the last few similar spots in Pittsford.	3	0	43.104148	-77.545323	3/19/2021 9:44	
3	Subcomment	Hoping it remains as is. The QOL, safety, and peacefulness of the surrounding neighborhoods would be negatively affected.	5	0	43.104148	-77.545323	3/21/2021 15:02	
3	Subcomment	What would you like to see done or not done with that parcel?	0	0	43.104148	-77.545323	5/3/2021 13:13	
4	Original Comment	Thanks you for working hard to keep Leeward Lane properties zoned RN. Please continue to uphold the quality of life by not letting additional roads break up nearby parcels, simply for the sake of issues with other roadways. The nearby woods and neighborhood safety would be detrimentally affected by service roads, access roads, or new developments. The surrounding ecosystem is fragile enough as it is. Thank you for making our input important.	3	0	43.104978	-77.546273	3/21/2021 15:12	
5	Original Comment	Several speed bumps are needed on Coventry Ridge between Ravenna and Dunnewood. Many cars are traveling too fast on this stretch of Coventry Ridge	0	2	43.053038	-77.556868	3/24/2021 7:27	
6	Original Comment	I have a Little Free Library in my front yard. I installed it in accordance with the information on the town's web site. Little Free Libraries are located in several yards across Pittsford. I didn't find any mention of these libraries in the new zoning document and I want to make sure we will be able to keep our libraries going forward.	8	0	43.063327	-77.513437	3/24/2021 7:28	
6	Subcomment	This is the kind of thing that concerns me. I've had lots of neighbors drop by my library to take or drop off books and I'd hate to have to remove it. https://abc7ny.com/society/woman-forced-to-take-down-free-library-on-front-lawn-in-nj/10443407/?fbclid=IwAR1bk-OrpdHPFP53EA7olul2ZSjjQ8JuvfqxtojuWSZychQlvrbIt5XqbA	1	0	43.063327	-77.513437	3/24/2021 7:49	
6	Subcomment	This is the kind of thing that concerns me. I've had lots of neighbors drop by my library to pick up or drop off a book and I'd hate to have to remove it. https://abc7ny.com/society/woman-forced-to-take-down-free-library-on-front-lawn-in-nj/10443407/?fbclid=IwAR1bk-OrpdHPFP53EA7olul2ZSjjQ8JuvfqxtojuWSZychQlvrbIt5XqbA	0	0	43.063327	-77.513437	3/24/2021 7:52	This is a duplicate comment (see above). It was removed from public view.
6	Subcomment	I love the little libraries and even the little food stands and such for sharing and selling garden veg and such. Certainly we'd like to encourage such things as part of a green future?!	1	0	43.063327	-77.513437	3/27/2021 14:27	
6	Subcomment	Yes! These little, lovely additions to our neighborhoods make my heart happy:)	0	0	43.063327	-77.513437	5/23/2021 21:53	

Residential

Thread ID	Thread Type	Comment	Upvotes	Downvotes	Latitude	Longitude	Date & Time	Notes
7	Original Comment	In the areas with buried utilities and no street lighting, consideration should be given to some form of permitted lighting at the end of driveways. After dark, the streets in these areas are difficult to navigate and hazardous to pedestrians, not to mention frequent lawn crossings by vehicles on curves. Yes, be very restrictive (max height, wattage, nature of wiring installation, pole type, require permit) but this is a safety issue and should be addressed in the code update. Thank you.	4	1	43.1047	-77.587509	3/24/2021 8:29	
7	Subcomment	Is there some way to manage this with reflective surfaces and markers? I've seen this done effectively in other places.	0	0	43.1047	-77.587509	3/27/2021 15:03	
7	Subcomment	I like this idea. Perhaps a light on each person's mailbox to help while walking the dog at night.	1	0	43.1047	-77.587509	4/2/2021 20:27	
7	Subcomment	Could this be an opportunity to specify solar powered lighting?	0	0	43.1047	-77.587509	4/3/2021 16:14	
7	Subcomment	Agreed. The West Jefferson Rd. zone between South Main and Sutherland only has lights on one side of the street and it's DARK at night on the side without them. We often cannot see our driveway entrance when it's so dark.	0	0	43.1047	-77.587509	4/21/2021 18:45	
8	Original Comment	I have reviewed the maps and I have a couple of questions: What is incentive zoning? What currently comprises the Monroe Avenue Transitional Zone? What kind of unit development is planned for the "Planned Unit Development"? What is the Monroe Avenue Transitional Zone going to transition to? During the Zoom session it was said that 60% of the population would favor multi-family units by 2030. Where and when was this study done and how many Boomers and how many millennials were surveyed?	0	0	43.086734	-77.614803	3/24/2021 14:35	
8	Subcomment	Below are some links for more information. Thanks for your questions! Incentive Zoning: https://ecode360.com/6437421 MATZ: https://ecode360.com/6435999 PUD: https://ecode360.com/6436623 Workshop recording: https://www.youtube.com/watch?v=aoRbNyP1L20&feature=youtu.be US Census Bureau's Building Permits Survey: https://www.census.gov/construction/bps/how_the_data_are_collected	0	0	43.086734	-77.614803	4/2/2021 19:01	This comment is a response from Map admin.
8	Subcomment	There may be a misunderstanding with the housing statistic (min. 37 in the Workshop recording). The data is based on the number of residential permits issued each year, not housing preferences or a specific age group. The share of single-family permits issued since the mid-2000s decreased from about 80% to 60%, while multi-family permits increased from about 20% to 40%. This trend suggests the demand for multi-family is increasing. The data is from the US Census Bureau's Building Permits Survey.	0	0	43.086734	-77.614803	4/2/2021 19:04	This comment is a response from Map admin.
8	Subcomment	A list of the specific uses and residential units permitted under each existing PUD area can be obtained through the Town's Planning, Zoning, and Development Office. The type of uses permitted in a PUD District varies based on the circumstances of the proposed development and proximity to other land uses. Each time a PUD is proposed by a developer, it goes through the development review process and at least one public hearing.	0	0	43.086734	-77.614803	4/2/2021 19:04	This comment is a response from Map admin.
8	Subcomment	Like Incentive Zoning, a Planned Unit Development (PUD) is a tool used to allow some flexibility in land use to respond to the specific context of a property. There is no type of "unit" defined for a PUD until such project goes before the Town Board for approval. Each of the existing PUD areas on the Town's zoning map are ones that have already been reviewed and approved by the Board.	0	0	43.086734	-77.614803	4/2/2021 19:05	This comment is a response from Map admin.
8	Subcomment	The Monroe Avenue Transitional Zone generally comprises properties fronting Monroe Avenue between Pittsford Plaza and the Village boundary (see the dark blue on the Zoning Context map). The purpose of the MATZ is to encourage the continued residential uses associated with district, protect the residential character and natural features of the district, and offer incentives for property owners to maintain and improve their properties to protect the district's residential quality.	0	0	43.086734	-77.614803	4/2/2021 19:06	This comment is a response from Map admin.

Residential

Thread ID	Thread Type	Comment	Upvotes	Downvotes	Latitude	Longitude	Date & Time	Notes
8	Subcomment	Incentive zoning is a tool used by municipalities to encourage developers to provide more significant community benefits as part of their investment. Specific community benefits may, at the discretion of the Town Board, be accepted in exchange for a developer incentive as outlined in the Town's Incentive Zoning Article. For example, an increase in density could be permitted in exchange for conservation of the property's natural components. This tool was used in areas of the Town zoned "IZ."	0	0	43.086734	-77.614803	4/2/2021 19:06	This comment is a response from Map admin.
9	Original Comment	When my neighbor moved in, he said he plans to build a few houses on the lot behind my property. I am opposed to this, and since the current zoning is for only one home I hope it remains this way. Subdividing property currently zoned for one house in our neighborhood would be against current zoning regulations.	14	0	43.077319	-77.496344	3/24/2021 20:14	
9	Subcomment	Shouldn't this depend on how big the lot is? It seems if one has a lot large enough, then one could apply to subdivide?	1	0	43.077319	-77.496344	3/27/2021 14:30	
10	Original Comment	Please allow Little Free Libraries on residential properties!	9	1	43.102926	-77.577724	3/26/2021 15:43	
11	Original Comment	As parents continue to live longer, houses should absolutely be able to put in in-law living options to facilitate retirement in place and supporting multi-generational living arrangements. We are very in favor of making this easy for house owners.	13	8	43.126922	-77.51009	3/27/2021 14:34	
11	Subcomment	I support this idea and would like to expand its use beyond just 'living' to include other uses - music/art studio, wood shop, professional office, catering kitchen. There is another comment that references our growing gig economy, start ups and our recent experience of most of us working from home.	2	1	43.126922	-77.51009	4/19/2021 12:07	
11	Subcomment	How do you define an in-law suite? What is essential that may not be currently permitted?	1	0	43.126922	-77.51009	5/3/2021 13:15	
11	Subcomment	Are there strict prohibitions on having things like a wood shop, studio, professional office, etc? People in town have these things. Asking for ease in allowing in-law living options opens up the possibility for homeowners to have other multi-unit dwellings on their property, and most people didn't bargain for that in their neighborhoods. I assume the original poster is talking about a separate dwelling on the property.	0	0	43.126922	-77.51009	5/24/2021 23:56	
12	Original Comment	With sustainability being more and more important, residents should be able to raise chickens and food on their land.	11	6	43.127236	-77.515326	3/27/2021 14:36	
12	Subcomment	I agree but no roosters allowed!	3	0	43.127236	-77.515326	4/2/2021 20:24	
12	Subcomment	Absolutely support amending the current town code to allow for keeping of chickens (not roosters) in backyard properties, to similarly match the codes of the surrounding towns. One of the individuals that recently helped to pass the recent update to the Penfield town code to allow chickens compiled the below spreadsheet of various town regulations around the keeping of chickens. https://docs.google.com/spreadsheets/d/1X6OquDrJbRBBQRuW3fzh2xHfHx1XuXtuKuDfiHuNTg/edit#gid=0	3	0	43.127236	-77.515326	4/7/2021 17:41	
12	Subcomment	Penfield has updated their town code to allow for chickens within a quite reasonable 25ft from adjacent homes (not property lines), with a permit, and some basic husbandry education. https://ecode360.com/36640738 Brighton allows for chickens within 10 feet of property lines. https://ecode360.com/9441901	2	0	43.127236	-77.515326	4/7/2021 17:49	
12	Subcomment	Agree! Sustainability is a key world in the future of our kids, with clear rules and guidelines, every household should be able to have a few chickens if that is their option.	2	2	43.127236	-77.515326	4/28/2021 21:10	
13	Original Comment	All residents should be encouraged, and potentially rewarded with tax incentives to convert their lawns and landscape to native plants. All should be able to participate in "No Mow May" and enable ecosystems that encourage and enable native diversity.	10	8	43.125012	-77.513351	3/27/2021 14:38	
13	Subcomment	Currently, under state law, towns cannot give tax breaks for types of landscapes or for not using pesticides. Are there other kinds of incentives you can think of for us to explore?	0	0	43.125012	-77.513351	5/3/2021 17:31	

Residential

Thread ID	Thread Type	Comment	Upvotes	Downvotes	Latitude	Longitude	Date & Time	Notes
14	Original Comment	While I love the idea of these GreenPrint areas, they need to be maintained to a point of not being loaded with invasives like phragmites (common reed) which continue to destroy much of our ecosystem and are very difficult to remove and keep at bay. Look closely, these are not marshy cat tails and healthy open spaces that many seem to think they are!! What are we going to do about all these invasives taking over our "green spaces" and covering our landscapes with seeds and reeds?!	12	0	43.041575	-77.522449	3/27/2021 14:42	
14	Subcomment	I must confess, I thought the GreenPrint areas were healthy open spaces. Is this a problem in only some of the GreenPrint spaces or all of them?	1	0	43.041575	-77.522449	4/3/2021 12:00	
15	Original Comment	If we want to encourage a growing economy, we should allow small businesses to start in the home, as well as people working from home in our increasing gig economy. Many of the biggest tech giants started in basements and garages, this should be allowed in the code.	2	4	43.124479	-77.51687	3/27/2021 14:45	
16	Original Comment	There are some other general comments above the map, I didn't see this box here until afterwards! Please check them out and share your thoughts!	0	0	43.115896	-77.585964	3/27/2021 15:04	
17	Original Comment	I really want auxilliary dwelling units! That is, I really want to convert my basement so my mother-in-law can live with us.	8	10	43.112764	-77.57515	4/2/2021 19:30	
17	Subcomment	To be clear, I would like it to be a full basement apartment with kitchen facilities being allowed.	3	5	43.112764	-77.57515	4/5/2021 18:01	
17	Subcomment	Yes, full in-law suites and auxiliary dwelling units should be allowed. Many homes could be reconfigured to allow for this within their current footprint. And, many properties here are large enough to allow for another unit within the current setback rules. This is important for many families today and should be allowed.	4	6	43.112764	-77.57515	4/6/2021 20:29	
17	Subcomment	Allowing this for family or possibly caretaker use is one things, however it needs to stop at use for AirBNB and unrelated persons rentals. Basement renovations are very different from building a dwelling structure on an existing lot.	3	4	43.112764	-77.57515	4/24/2021 10:05	
18	Original Comment	Is it possible to zone an area on Washington (or somewhere else appropriate) as mixed use residential? Allowing an 'extension' of the village feel with a shop beneath an apartment and walkable via sidewalks to the neighborhoods near by.	7	17	43.097855	-77.510245	4/2/2021 20:18	
18	Subcomment	I strongly disagree with mixed-used residential outside of the Village/Monroe Ave. It creates considerable risks for additional traffic, increased blacktop, parking requirements and breaks down the traditional residential neighborhood. Very few families in that area would find value in mixed-used options and the risks that entails.	4	0	43.097855	-77.510245	4/5/2021 19:54	
18	Subcomment	I live on Washington and think this is an interesting idea, but perhaps not in the scope of this process since I think the most applicable section of Washington for this idea would be the part that's in the Village (from N Main St to Golf Ave).	0	0	43.097855	-77.510245	5/19/2021 12:25	
18	Subcomment	I don't see the need for additional mixed use/residential areas. There is always commercial vacancy in the village. I think it would negatively affect quality of life for existing residents.	0	0	43.097855	-77.510245	5/25/2021 0:01	
19	Original Comment	Several vacant houses in this area. MANY others are rental houses or have been purchased to become rentals. This has created a transient neighborhood with untended properties. Can this be addressed through zoning?	20	0	43.097599	-77.514725	4/3/2021 10:40	
20	Original Comment	I would like to see sidewalks and a bike lane installed along marsh road connecting us to the existing pathways and canal.	11	0	43.089388	-77.488546	4/3/2021 14:31	
20	Subcomment	Good news! Marsh Road is one of the places recommended for a sidewalk in the Town's Active Transportation Plan.	0	0	43.089388	-77.488546	5/3/2021 17:26	
21	Original Comment	To support bird species and the insects that provide their food, as well as supporting pollination of all plants, required for their continued existence, we should specify at least 70% of landscaping consist of native species in all residential, commercial, industrial, open spaces and park lands.	8	0	43.116899	-77.601414	4/7/2021 19:44	
22	Original Comment	There should be a way for all children to walk/bike to school	11	0	43.106247	-77.597122	4/7/2021 20:32	
23	Original Comment	Revise Zoning practices and leverage Pittsford's Scenic Resources Inventory, Scenic Resource Overlay District planning, and planning for Purchase of Development Rights (PDR) lands and surrounding buffers, to incorporate analysis of habitat use, habitat disruption and plan for habitat connectivity.	6	0	43.117901	-77.565536	4/8/2021 9:12	
24	Original Comment	Revise Zoning practices to encourage reduction of lawn area through planting of Native plant and tree species thus creating much more inviting (and much less boring) spaces.	6	1	43.11928	-77.575836	4/8/2021 9:15	

Residential

Thread ID	Thread Type	Comment	Upvotes	Downvotes	Latitude	Longitude	Date & Time	Notes
25	Original Comment	Require, or at least Strongly Encourage, incorporation of NY STRETCH Energy Codes in any new construction. Please encourage use of Heat Pump technologies (lots of incentives), Solar heat, PV panel power production and energy storage technology (sustainability, resiliency and more incentives) in/on all new and existing structures.	2	5	43.121096	-77.56897	4/8/2021 9:50	
26	Original Comment	Please encourage planning for connected trails (and/or bikeways) among and between neighborhoods as part of neighborhood planning and particularly for planning of Cluster Development. This checks many boxes in the Comprehensive Plan.	3	0	43.121034	-77.580557	4/8/2021 9:54	
27	Original Comment	Encourage planting of native trees in lot border areas and in open spaces through zoning practice and through town sponsored, community engagement tree planting activities. This is one of the best ways to both improve the quality of life in Pittsford and reduce our CO2 burden.	3	0	43.120157	-77.586651	4/8/2021 9:59	
28	Original Comment	The block of land at Thornell and W.Bloomfield Rd is indicated on this map as "GreenPrint" land. There is, unfortunately, a sprawl of large houses there, the building of which began about 2008. Are there other such errors on the GreenPrint map in regions I am personally less familiar with?!	0	0	43.100008	-77.563219	4/8/2021 10:03	
28	Subcomment	I suspect this is considered GreenPrint as they have walking paths, ponds and spaced out houses. It's not clear if they are native landscapes.	0	0	43.100008	-77.563219	5/3/2021 12:37	
29	Original Comment	Adopt practices in the proposed Regulating Plan for Open Spaces and Open Space Management Plan to create connected corridors for wildlife, connected trail systems for quality of life, and planting of Native trees for beauty and additional quality of life.	7	0	43.121226	-77.592018	4/8/2021 10:05	
29	Subcomment	Great idea and good news on this! The Town is currently developing a pollinator corridor plan that includes both town-owned land and public-private partnerships. More news to come as the plan is finalized and implemented.	0	0	43.121226	-77.592018	5/3/2021 13:18	
30	Original Comment	Since upstate NY is an expected "destination" for climate refugees from less livable parts of the country, it is critical that planning/zoning accommodate any increased population without infringing on the farmland, public open lands, and recreational spaces that contribute to Pittsford's attractiveness. This will necessitate allowing more dense housing and multi-use development, concentrated around village and vicinity rather than sprawling into remaining open lands.	5	9	43.103006	-77.562704	4/8/2021 10:11	
30	Subcomment	Is Pittsford a destination for refugees? That is the first I've heard of this. There are plenty of areas in Monroe country with ample high density housing in place and the schools to handle the inflow of new students.	5	1	43.103006	-77.562704	4/15/2021 21:16	
30	Subcomment	I agree that Pittsford has the opportunity to really expand our offerings, support our business and accommodate for people who will be looking for more climate desirable places to live. People who have been displaced from their homes will be looking for a new location. Why not make it Pittsford and grow our Town? I support attractive and dense (condo and Townhome and Tiny home) hosing options.	1	3	43.103006	-77.562704	4/24/2021 15:29	
31	Original Comment	Synergisms between the Town Open Spaces Management Plan, Regulating Plan for Open Spaces, Parks Master Plan, Scenic Corridor Plans, Greenprint and Active Transportation Plans all encourage establishment of connected corridors of trail systems for additional quality of life (see Perinton) and for additional Native tree plantings.	6	0	43.121222	-77.597809	4/8/2021 10:12	
32	Original Comment	The old Erie Canal path provides an opportunity to connect Pittsford Plaza with recreational use of the Erie Canal trails. Please consider welcoming bicyclers with an approach to Pittsford Plaza and bicycle racks to open this opportunity.	7	0	43.100983	-77.542534	4/8/2021 10:16	
33	Original Comment	Please consider extending bicycle and walking access behind the East side of Monroe Avenue across from Pittsford Plaza through marked bicycle and pedestrian lanes at the edge of parking and bicycle racks to encourage use of nearby shops.	3	0	43.103866	-77.53438	4/8/2021 10:21	
34	Original Comment	I notice that the several farms in this region (S of Thruway, and a few other locations farther north) are not included in "PDR" areas marked on a lot of farmland farther north in the town. The town must ensure that ALL existing farms are saved for farming (or at least as open space) and not lost to "development" of residential sprawl. Town's Right of first refusal would be a good addition. Or Conservation easement? Incentives to attract farmers when farmland goes up for sale?	8	0	43.043113	-77.573948	4/8/2021 10:46	
35	Original Comment	Require, or at least strongly encourage, incorporation of EV charging infrastructure (240 VAC line) in the garages of any new construction.	2	4	43.116711	-77.593346	4/8/2021 10:57	

Residential

Thread ID	Thread Type	Comment	Upvotes	Downvotes	Latitude	Longitude	Date & Time	Notes
36	Original Comment	Town-owned lands, parklands, and open spaces in cluster developments provide an opportunity to improve the ecological health of our community -- these areas should be cleared of invasive species and replanted with native trees, shrub, perennials as appropriate to provide food and habitat and food for insects, pollinators of all kinds, birds, and other wildlife...and pleasure for us humans. Such areas also require maintenance, which may require the town hire a qualified gardener/ landscaper.	7	0	43.098893	-77.570515	4/8/2021 10:59	
37	Original Comment	Encourage installation of photovoltaic panels for power production, installation of small wind turbines for power production, and installation of energy storage systems for sustainability and resilience in existing building construction as well as new construction.	5	1	43.111636	-77.600727	4/8/2021 11:00	
37	Subcomment	Backyard poultry currently essentially not allowed! Section 185-120 c requires 150 feet from property boundary for facility housing poultry. A 150ft radius is 70,650 sq ft or over an acre and a half. A rectangular property with a point 150 ft from an edge is a square with 300 ft sides or 90,000 sq ft or over two acres! Other towns and even the City of Rochester permit chickens with limits on the number or no roosters. 25 hens with permissions of nearby neighbors would be more reasonable!	0	0	43.111636	-77.600727	5/24/2021 13:53	
38	Original Comment	For a town the (smallish) size of Pittsford, 3 golf courses seems a bit extreme. This represents a large area that is soaked in synthetic fertilizer and pesticides. As privately-owned properties, I suspect there is little the town can do, but could the golf courses be incentivized somehow to at least reserve some land, e.g., along edges and around / among trees for planting native shrubs and herbaceous plants and cutting out the pesticides and fertilizers?	4	3	43.098509	-77.579441	4/8/2021 11:14	
39	Original Comment	Cluster housing (and other more dense housing) is a good direction for any further residential development. However, these somewhat isolated neighborhoods need to be connected by trails to each other and with other trails that lead to more central parts of town/village.	3	9	43.097878	-77.584934	4/8/2021 11:19	
39	Subcomment	I don't agree with more dense housing, but I love the idea of connecting isolated neighborhoods with trails.	6	0	43.097878	-77.584934	4/23/2021 20:47	
40	Original Comment	This space between streets has been described generally as 'Open Space'. However, RN has no mention of Open Space. RRAA mentions Open Space, but has no guidelines for qualifying or for changes to designation. Open Space needs clear definition,as a defining characteristic of SE Pittsford, and maybe other areas. SE Pittsford has no recreation areas other the Open Space. Our only recreation in walking distance is Open Space. Open Space needs to be preserved via new zoning codes.	3	0	43.039067	-77.499363	4/8/2021 17:01	
41	Original Comment	Space between Wren Field and PittsMendon Road has been described generally as 'Open Space'. However, RN has no mention of Open Space. RRAA mentions Open Space, but has no guidelines for qualifying or for changes to designation. Open Space needs clear definition,as a defining characteristic of SE Pittsford, and maybe other areas. SE Pittsford has no recreation areas other the Open Space. Our only recreation in walking distance is Open Space. Open Space needs to be preserved via new zoning codes.	5	0	43.04004	-77.509018	4/8/2021 17:07	
42	Original Comment	Close proximity to P-M High School makes this area desirable as more densely developed area than RRAA allows. Kids could walk to school. Maybe the RRAA label could be swapped with the RN area near the Thruway, west of Nature View. It's already farm land south of an RRAA area. Connect them.This needs discussion among people in the immediate area, but good development usually raises nearby property values.	4	1	43.055813	-77.520774	4/8/2021 17:24	
43	Original Comment	This is a large ravine that probably is undesirable for development because of steep terrain and water drainage issues. With discussion and input from people living around it, the Town should consider zoning this center space as a park, Open Space or some category that keeps it forever wild.	7	0	43.056974	-77.499534	4/8/2021 17:36	
43	Subcomment	Agreed - once the green is gone, it is gone forever.	0	0	43.056974	-77.499534	4/28/2021 13:49	

Residential

Thread ID	Thread Type	Comment	Upvotes	Downvotes	Latitude	Longitude	Date & Time	Notes
44	Original Comment	If you are considering creating a new neighborhood, the zoning can be very creative for exploring how self-reliant a community can be; including their own community gardens, local mini-farmers markets, a building for community activities etc. Most importantly we need new home builders who are building true ecologically sound and socially connected communities. The homes should auto have geothermal energy and local regional materials with continuous insulation and air sealing. Energy producing.	8	0	43.099479	-77.606049	4/12/2021 15:01	
45	Original Comment	New home builds should have their own solar units and energy optimized windows, proper direction facing and space for their own gardens. "Plus energy" design homes are one of the designs for the future and we should insist that we find a builder for such sustainable and efficient design. Any homes or neighborhoods should be transforming to becoming more self-reliant. Using grey water and rainwater recycling is also an urgent suggestion.	6	4	43.09622	-77.590942	4/12/2021 15:06	
46	Original Comment	I support zoning for mother-in-law/ carriage houses. They can be achieved many ways (detached, attached, above garage, etc) and would provide seniors with the ability to live close to family and / or allow for additional income for families. Considering the cost of living rises and we have the space for it, I strongly support "ADU's" for new builds as well as zoning adaptations for existing home. They can be achieved beautifully with intentional design and rules.	5	13	43.10844	-77.583904	4/12/2021 15:17	
46	Subcomment	I disagree. Why is there all of a sudden a demand for ADU's? Seems odd and a guise for other motives. Please do not amend the zoning laws to accommodate for ADU's. I think further research should be conducted by the town before it is even considered for discussion.	7	1	43.10844	-77.583904	4/22/2021 21:13	
46	Subcomment	ADU's are becoming very relevant and appreciated in different parts of the country. There is also State money and or support in Albany for such necessary and creative ways for land use, income, family support and for the climate. The possibilities are many, and going into the future I think all ideas should be considered.	0	3	43.10844	-77.583904	4/24/2021 15:24	
47	Original Comment	Allow in law (both attached and detached) dwelling additions. Consider much smaller lot sizes of new builds, for affordable patio homes, for those who want to live here to have MANY actually affordable options, mixed use in areas with businesses for apartments above. Equity in housing for age, mobility, for financial, for ease of access. Thinking about current and future residents and evolving for inclusivity.	6	13	43.106873	-77.607079	4/12/2021 19:55	
47	Subcomment	It seems like a few folks are hard set on urbanizing Pittsford at any cost for an issue that doesn't exist. It will greatly impact our schools, traffic patterns, the attractiveness/aesthetics and quality of life in Pittsford. There currently MANY affordable housing options for families and we welcome anyone regardless of ethnicity/race. We live on diverse street, with seniors, that have no desire to move to a smaller home and with POC that have no issue with the current zoning laws.	9	4	43.106873	-77.607079	4/16/2021 9:39	
47	Subcomment	I agree with considering more variety in home options. My parents recently retired and wanted to move to the area to be closer to us and our children and had difficulty finding a patio home at an affordable price. We have a wonderful town and diversity of housing options would strengthen it - I believe this was presented well during the town hall meeting discussing concerns about zoning. They just need to be done in a thoughtful way.	1	5	43.106873	-77.607079	4/22/2021 16:00	
48	Original Comment	Not sure if this is already addressed in current zoning, but I have concerns about people razing homes to build larger, newer ones. It just happened in my neighborhood and the new build definitely stands out.	5	4	43.120658	-77.562704	4/13/2021 18:42	
48	Subcomment	Good news on this front -- We recently passed a new local law to require review of demolitions by the Design Review & Historic Preservation Board. This should mitigate the effects on neighbors and community character.	2	0	43.120658	-77.562704	5/3/2021 13:17	
49	Original Comment	Please consider smaller patio style homes for future development. We need them for our seniors and young families just starting out.	1	7	43.121535	-77.573519	4/13/2021 18:45	
49	Subcomment	I respectfully have to disagree with this comment After speaking with the many seniors that live on our street, they have no desire to move into a smaller home - so I'm not sure where this demand is coming from ? The same goes for the young families that we socialize with in Pittsford, and the other surrounding towns.	3	0	43.121535	-77.573519	4/15/2021 20:50	
50	Original Comment	I would like to increase racial, ethnic, and economic diversity in our neighborhood. I would like to see housing that is inviting and affordable to a variety of people. I believe that can be done with tasteful townhouses or other options to improve our community's diversity .	5	11	43.059719	-77.508206	4/16/2021 11:10	

Residential

Thread ID	Thread Type	Comment	Upvotes	Downvotes	Latitude	Longitude	Date & Time	Notes
50	Subcomment	Who has been limiting racial, ethnic and economic diversity? Can you give us an example of someone of any race being told they cant live in Pittford? Isn't it racist to say we need special housing for this to occur?	8	1	43.059719	-77.508206	4/24/2021 10:38	
50	Subcomment	Husband & I have grew up & worked hard to get away from “affordable” housing. I would want my taxes greatly reduced if this came. I have been a victim of violent crime twice, robbed, harrassed basically every time I walked/rode bike/walked to school as a kid passing by this housing by men released from prison who would sit outside w/ alcohol/drugs all day, paraphinilia spread 2 parks, daily violent fights break out with police needed, rapes & MURDERS. Try living 1 month by1. We came for safety!	0	0	43.059719	-77.508206	4/28/2021 5:59	The content of this comment violated the Map's Terms & Conditions. The comment was hidden from public view.
50	Subcomment	We have neighbors from diverse racial and ethnic backgrounds. These fellow residents live here because they can afford it. Affordable is a relative term. We are not living in socialism, and what is affordable for some is not affordable for others. That's the way it is. There is plenty of low-cost housing elsewhere in Monroe County. Building low value houses does not produce enough tax revenue to cover the cost of services and is not fair to the existing taxpayers.	2	0	43.059719	-77.508206	5/24/2021 11:49	
50	Subcomment	This neighborhood is pretty densely built, so where would the townhomes be? Why is there an assumption that building other than single family homes would increase racial and ethnic diversity? There are townhomes and apartment buildings in other areas of Pittsford. You don't need to redesign established neighborhoods.	0	0	43.059719	-77.508206	5/25/2021 0:10	
51	Original Comment	I am bothered by the Comprehensive Plan's recommendation for south of thruway: "low impact development that blends visually with surrounding park..." Further sprawl south of thruway should be avoided; the "visual" aspect is not the point; this "low impact" likely means more very large lots with wastefully large expensive houses surrounded by yet more sterile grass -- the opposite of what we need as we face climate emergency.	2	1	43.040016	-77.562275	4/19/2021 10:28	
52	Original Comment	Areas designated as Greenprint land should always have a Town right of first refusal clause so that this land cannot be directly sold for development. Town officials should be held accountable to residents to preserve Greenprint land.	5	0	43.098125	-77.504072	4/19/2021 13:59	
52	Subcomment	Just to clarify -- "Greenprint" means that the Town owns the property development rights, but the property remains owned by a private owner. This prevents the property owner from selling the land to a developer. It must remain in agricultural use or as open space. The program under which the Town bought those development rights also prohibits the Town from selling the development rights. So protections you are describing are already in place. Does this help address your concern?	0	0	43.098125	-77.504072	5/3/2021 13:25	
53	Original Comment	Bridleridge, a new housing development, currently under construction, should be required to plant 70% of their total landscaping with NY native trees and shrubs. This would connect residents with nature while providing habitat for our dwindling population of pollinators. Home Owners Associations (HOA) must be more flexible with rules regarding lawn pesticides, lawn height, and winter cover for insects.	6	0	43.036426	-77.575818	4/19/2021 14:04	
54	Original Comment	Please permit installation of ground-mount and greenhouse/solarium roof-mount photovoltaic panels in all residential neighborhoods.	2	1	43.113265	-77.565022	4/19/2021 14:45	
55	Original Comment	Can we put sidewalks on one side of Tobey Rd between Clover St. and South Main St.? We have a lot of walkers who could use these to walk to the Village and Canal Path. It's a busy street and hard to walk safely with so much traffic and no sidewalks.	7	1	43.081701	-77.535195	4/21/2021 7:02	
56	Original Comment	We need a guardrail on West Jefferson from Green Street to Sutherland. Traffic is so heavy and fast and CLOSE to pedestrians. Someone is going to be hit by a car without a wall or rail as a form of protection. It's very scary to walk there. Also traffic-calming is oh so very necessary on this strip as well. I don't see anything in the Active Transportation Plan that addresses this zone specifically as Jefferson Road approaches South Main.	3	1	43.120094	-77.605276	4/21/2021 18:49	

Residential

Thread ID	Thread Type	Comment	Upvotes	Downvotes	Latitude	Longitude	Date & Time	Notes
57	Original Comment	It would be nice to have a sidewalk or path from the Rollins Crossing neighborhood to Barker Road Middle School. Calkins Road is too busy and the shoulder is too narrow to safely walk or ride a bike from Rollins Crossing to Barker Road Middle School.	3	0	43.068574	-77.56279	4/23/2021 20:34	
57	Subcomment	Would like the town to extend sidewalks to Delancey Court/ Rollins Crossing to CRMS. I feel we are disconnected from the Village. Would love to be able to walk into the Village!	1	0	43.068574	-77.56279	4/28/2021 11:57	
57	Subcomment	Correction from the original poster... I meant Calkins Road Middle School, not Barker Road Middle School. We need a sidewalk from Rollins Crossing to Calkins Road Middle School.	1	0	43.068574	-77.56279	4/29/2021 6:32	
57	Subcomment	There is ample room on Calkins Road to accommodate a sidewalk or pathway to enable people to safely walk from Rollins Crossings to the Middle School. This would connect to the existing walkway on Calkins Road and enable people to walk or bike to the village safely.	0	0	43.068574	-77.56279	5/19/2021 13:36	
58	Original Comment	Solar arrays -	0	6	43.073281	-77.522106	4/24/2021 8:21	
58	Subcomment	Strict regulations regarding the application of home or ground mounted solar collection systems.	1	0	43.073281	-77.522106	4/24/2021 8:26	
59	Original Comment	Do not allow existing houses and neighborhoods to be turned into multifamily. Rental properties in existing homeowner neighborhoods are bad enough. Allowing current single family dwellings will open the door to many issues of what people will think they can get away with...AirBNB, rental apartments, etc. This is not a "Grandma" issue. Allowing multifamily transitions in an existing neighborhood will only bring down property values and deteriorate neighborhoods. Creating issues for residents.	11	0	43.09998	-77.493954	4/24/2021 9:42	
60	Original Comment	Is it in any future planning to have continuous sidewalks from Fairport Rd to the Village? Meaning a continuing sidewalk on one side of Washington Rd without having to cross a busy road?	4	0	43.103114	-77.504253	4/24/2021 9:56	
60	Subcomment	Good news! The Town's Active Transportation Plan includes the recommendation to complete the sidewalk along Fairport Road so it connects to sidewalks that go into the village.	0	0	43.103114	-77.504253	5/3/2021 17:28	
61	Original Comment	While higher density housing may be desirable on some level it needs to be done with visual appeal and thoughtfulness. Row House design as in major cities could be a good approach. What not to do is what is happening in the City of Rochester with the new apartments buildings being built. In a few words, they are horrible and ugly. Not only that they look cheaply built. There is a need for downscale housing. Perhaps something like the Regent Park development in Atlanta or Georgetown.	0	8	43.107312	-77.571201	4/24/2021 10:42	
62	Original Comment	More affordable housing options are needed. Pittsford needs to be more welcoming to wider variety of people. Increased diversity is of great value to the future of Pittsford, and zoning that enables a more diverse population is badly needed.	3	9	43.113808	-77.579155	4/25/2021 20:49	
62	Subcomment	I agree wholeheartedly. We need this desperately.	0	0	43.113808	-77.579155	5/23/2021 21:56	
62	Subcomment	Yes, this is a wonderful community in so many ways, but the lack of economic diversity is a detriment to all members of this community. Homogeneity, economic and otherwise, benefits no one.	0	0	43.113808	-77.579155	5/24/2021 21:43	
63	Original Comment	The top priority of the Town's zoning plans and codes should be to help minimize the effects of climate change and help improve the environment (reduced use of fossil fuels and carbon emissions, reduced pollution, reduced waste, reduced water usage, etc.).	0	1	43.110926	-77.58997	4/25/2021 20:53	
64	Original Comment	A top priority of the Town's zoning plans and codes should be to improve walkability, bike-ability, and pedestrian safety. Primarily for safety, but also to help improve the environment. Particularly in the area surrounding the village and the gateways to the village, more needs to be done (quickly) to calm traffic, improve safety, and make the areas more welcome for pedestrians and bicyclists. Pedestrian and bike traffic should have priority in these areas.	6	0	43.10115	-77.596035	4/25/2021 20:59	
65	Original Comment	I think that N Wilmarth Rd needs to be looked at again. There are larger parcels (ours included as well as Ecklunds) that are set up for agriculture/horses yet they are zoned Residential neighborhood which does not address agriculture or horses as far as I can tell. Vacant parcels on same road are zoned Rural residential which does address agriculture.	1	0	43.045809	-77.552168	4/28/2021 7:57	
66	Original Comment	Bioretention areas should be allowed in the middle of cul-de-sacs. This will help reduce stormwater runoff and will beautify neighborhoods. The code should explicitly state that they are allowed.	2	0	43.107951	-77.576523	4/28/2021 9:26	

Residential

Thread ID	Thread Type	Comment	Upvotes	Downvotes	Latitude	Longitude	Date & Time	Notes
67	Original Comment	Institute green infrastructure principals such as: requiring that a minimum percentage of open space be left in its' natural condition, and requiring that open space be consolidated in a large contiguous piece when possible; establishing max. requirements for residential setbacks and frontage distances for new development, that will allow road lengths to be shorter	1	1	43.109956	-77.565022	4/28/2021 9:36	
67	Subcomment	This is an interesting idea, but as many spaces current "natural condition" is loaded with invasives, this would require work to not have it be a nuisance!	0	0	43.109956	-77.565022	5/3/2021 12:30	
68	Original Comment	Institute green infrastructure principals that help reduce stormwater runoff such as; eliminate requirements for gutters/curbs on all residential streets, reduce residential right-of-way (ROW) widths and cul-de-sac diameters, and allow utilities to be placed under paved ROWs. Some of these items are constrained by State Fire Codes and the Town does not have the option to make changes to these. However, encouraging the use of pervious materials for these areas may be an option.	1	0	43.117099	-77.571545	4/28/2021 9:38	
69	Original Comment	we continue to see houses being bought and used for student rentals. we have two with 5 to 6 individuals living in one house. property not really kept up. cars parked on street even during winter especially on a curve. can anything be done with zoning to prevent these homes not being maintained and people with no attachment to neighborhood. this should be a single family neighborhood	9	1	43.078924	-77.515158	4/28/2021 18:14	
70	Original Comment	A sidewalk is desperately needed on this portion of French rd. There is no shoulder, lots of walkers/bikers, a group home, and now way to safely connect residents to the plaza a stone's throw away or the railroad loop trail.	4	0	43.099761	-77.539573	5/1/2021 0:42	
70	Subcomment	I agree! I walk/run this section of French Rd almost daily (sometimes with two small children) and it is treacherous but provides access to the trail, Pittsford Plaza, etc. Sidewalk should be a high priority!	0	0	43.099761	-77.539573	5/3/2021 15:29	
71	Original Comment	The section of French Rd between Clover St and Monroe Ave has significant pedestrian traffic (especially with the trail halfway between the two streets), no sidewalk, and minimal road shoulder. It is treacherous. Adding more retail/housing to the Monroe Ave Transitional Zone makes the need for a sidewalk here even more urgent!	2	0	43.099855	-77.541118	5/3/2021 15:28	
72	Original Comment	I think that a lot of the RN single family zone could benefit from relaxing some of the restrictions and allowing more ADU's, duplexes, smaller units (sometime called "tiny houses" etc. This could increase the variety of options available without changing overall neighborhood character.	5	7	43.070771	-77.535496	5/6/2021 17:37	
73	Original Comment	The zoning could should be changed to remove single-family zoning restrictions for the whole town. The code should allow for small-lot residential development, multi-family housing, attached housing, apartments, and accessory dwelling units in all parts of the town. An inclusive zoning code should be created that requires all new development projects to include units set aside for people below 80% of AMI.	1	3	43.124667	-77.542706	5/13/2021 15:39	
74	Original Comment	Sidewalks are needed on French Road and on both sides of Monroe Avenue	4	0	43.095593	-77.539787	5/13/2021 15:40	
75	Original Comment	Pittsford needs to legalize multifamily housing, allowing for apartments, townhouses, and accessory dwelling units that will pave the way for more inclusionary housing practices. This would allow the town to follow through on its commitment to sustainability and include people of different backgrounds (racial, economic, etc) in the same areas.	0	2	43.099197	-77.490735	5/14/2021 8:08	
76	Original Comment	PLEASE do all possible to maintain the protection of the areas AROUND and NEAR this neighborhood. It must be protected from overuse, excessive traffic, noise, population, and environmental destruction. Likewise, any present or future children living here should be guaranteed the safety and quality of a permanently protected residential owner-occupied, or single family occupied abode. The idea of a family Homestead is not dead, and is still an aspiring thought for many who ELECTED to move here.	0	0	43.105413	-77.544521	5/18/2021 12:03	
77	Original Comment	Please don't even consider allowing any multi/residential or rental apartments for non-related people in this or surrounding neighborhoods. Our home value already suffers being behind the Plaza, more than others. If apts were to go in nearby on any wooded areas beyond the limits of the Plaza, our value would sink dramatically. We've worked too hard for too long to ever see that happen here. There are plenty of other environmental and healthy living goals to maintain in this and similar. PreservePlz	0	0	43.105381	-77.544489	5/18/2021 12:12	

Residential

Thread ID	Thread Type	Comment	Upvotes	Downvotes	Latitude	Longitude	Date & Time	Notes
78	Original Comment	Would love to see a sidewalk on French from N Main to Monroe.	3	0	43.098046	-77.516356	5/19/2021 12:27	
79	Original Comment	Please do not change the zoning of the former priests' retirement home now owned by SJFC to allow division into separate lots or multi-unit dwellings; with the new multi-family units being built at Kilbourn Place across the street this would further change the single-family nature of this older neighborhood.	1	0	43.119154	-77.521677	5/19/2021 12:57	
80	Original Comment	There is very little street lighting in our neighborhood at night, so the neighborhood is very dark when the sun goes down. Can adequate street lighting be added to provide safety and security to residents who live here?	0	0	43.081019	-77.523565	5/19/2021 15:32	
80	Subcomment	There is one set of street lights on the corner of Sunset and Sandpiper, but they frequently are not on/are burned out.	0	0	43.081019	-77.523565	5/25/2021 0:03	
81	Original Comment	why is the rest of Coventry Ridge showing as greenprint land? There is alot of development not showing on this map	1	0	43.048412	-77.550409	5/19/2021 21:09	
82	Original Comment	Why is the developed part of N. Wilmarth zoned as residential but the undeveloped land sold to a developer is zoned as rural residential? N Wilmarth is one of the older areas, homes dating back to the 1800's built on farming. Are the agricultural aspects preserved for this area? We have large & small horse farms & various other animals on this road. We have become landlocked w/the thruway & now two major housing developments. The entire road should be zoned rural residential agricultural.	2	0	43.044197	-77.5491	5/19/2021 22:24	
83	Original Comment	Please limit installation of street lighting especially on residential roads. Too much light pollution in the world already; it has a negative impact on wildlife; and it is not needed, especially considering that most houses have outside lights that are often too bright. When walking at night, use a flashlight to make yourself visible if you hear a car approaching.	0	0	43.115681	-77.607765	5/20/2021 15:55	
84	Original Comment	I believe it is in the best interest of Pittsford to ad a component of affordable housing as well as senior cottage. The affordable housing can be mixed use at Monroe Avenue and in some development in the South of the town. Affordable if done correctly will offer all of us an opportunity to have a more diverse economic and ethnic community.	0	0	41.3027	-77.555408	5/23/2021 9:45	
85	Original Comment	A sidewalk from Greenpoint Trail/Fairway Crossing to the YMCA would be desirable. Thank you.	5	0	43.086468	-77.552318	5/23/2021 17:02	
86	Original Comment	We need affordable housing for seniors. Friends had to leave town because nothing was available. We also need affordable housing for low income folks. Why not have some diversity. By the way, this website is difficult to follow.We hope that improves and that there is more advertising for deadlines like this one.	2	2	43.079672	-77.568111	5/23/2021 17:16	
86	Subcomment	We know plenty of seniors who can afford to live here. We are seniors ourselves, and we are not going anywhere. We have neighbors from diverse racial and ethnic backgrounds. These fellow residents live here because they can afford it. Affordable is a relative term. We are not living in socialism, and what is affordable for some is not affordable for others. That's the way it is. There is plenty of low-cost housing elsewhere in Monroe County. Building low value houses does not produce enough tax	2	0	43.079672	-77.568111	5/24/2021 12:07	
87	Original Comment	Pittsford should look at constructing more higher-density living options within the town. Building more apartments and townhomes within the town will attract younger people, and will allow seniors to move to a smaller footprint home while remaining in Pittsford. Having some of the best schools in the area, we should be attracting families with school age children to move into town. A lot of people can't afford a single family home, or don't want to maintain one.	2	1	43.103302	-77.602015	5/24/2021 8:12	
87	Subcomment	I love this idea of having additional options to attract a larger demographic of families.	0	0	43.103302	-77.602015	5/24/2021 21:39	
88	Original Comment	The town does not need further multi-unit or multi-family residences. There has been no demonstrated marginal value from those residence types which outweigh the costs which they incur.	0	1	43.115849	-77.598667	5/24/2021 12:19	
89	Original Comment	I would like to have a sidewalk on Thornell extend to Bushnell's basin. This would connect my neighborhood to the canal, businesses, and access to more trails without being on busy streets.	3	0	43.058231	-77.487559	5/24/2021 15:28	
89	Subcomment	Completely agree with you! The sidewalk should extend all the way to the east end of Thornell so people can walk into Bushnell's Basin and get to the canal.	0	0	43.058231	-77.487559	5/24/2021 15:41	

Residential

Thread ID	Thread Type	Comment	Upvotes	Downvotes	Latitude	Longitude	Date & Time	Notes
90	Original Comment	The crossing here is very dangerous. Cars go fast around the corner and up the hill and rarely stop for proactively for pedestrians. A blinking sign or flags would help. Also, not having the sidewalk end here would be another option.	1	0	43.054697	-77.488659	5/24/2021 15:29	
90	Subcomment	Completely agree with you! The sidewalk should extend all the way to the east end of Thornell so people can walk into Bushnell's Basin and get to the canal.	0	0	43.054697	-77.488659	5/24/2021 15:41	
91	Original Comment	Our property at 430 East Street zoned for 1/3 acre development lots when we purchased it 25 years ago. It is our retirement investment. To alter the zoning would severely impact the financial well being of our family. It is not simply a parcel to zone. It is a family who has contributed to this community.	0	0	43.04606	-77.497344	5/24/2021 15:58	
92	Original Comment	Concerned the deblase open space is only shown as a small green area behind laureldale and much of the area from there to thornell is all yellow. I thought the entire area behind laureldale and over to thornell running behind Woodstock was set as forever green. Removing invasive plants and making this a polinator trail would be ideal.	1	0	43.056972	-77.49287	5/24/2021 16:44	
93	Original Comment	New builds should meet high environmental standards from building materials used to performance and long-term longevity.	0	0	43.108327	-77.591457	5/24/2021 17:45	
94	Original Comment	Pittsford needs to legalize multifamily housing, including apartments, townhomes, and accessory dwelling units, to follow through on its commitments to sustainability and inclusion of people of different backgrounds.	0	0	43.097975	-77.596436	5/24/2021 21:44	
95	Original Comment	Pittsford should create a pathway to home ownership for low-income families and people of color as a way to partially address its history of segregationist housing practices, including deed restrictions on properties throughout the Town.	0	0	43.109756	-77.58213	5/24/2021 21:44	
96	Original Comment	Pittsford should allow multifamily development, especially near the village to allow more people to walk where they need to go.	0	0	43.080842	-77.507172	5/24/2021 21:45	
97	Original Comment	Pittsford should allow commercial uses such as corner stores, coffee shops, and home-based businesses in residentially zoned areas.	0	0	43.105161	-77.592773	5/24/2021 21:45	
98	Original Comment	Pittsford should allow more affordable housing, including apartments, townhomes, accessory dwelling units and rental units, in residential areas to be truly inclusive of people from different income and family backgrounds.	0	0	43.113766	-77.582359	5/24/2021 21:46	
99	Original Comment	Pittsford should legalize accessory dwelling units, in-law apartments, and tiny homes in residentially zoned areas to allow our aging population to age in-place.	0	0	43.107751	-77.593346	5/24/2021 21:46	
100	Original Comment	Pittsford should legalize mixed-use development, including retail, apartments, and small businesses throughout the town to promote the character of our village, not monotonous suburbia everywhere.	0	0	43.10374	-77.583733	5/24/2021 21:47	
101	Original Comment	Tobey Estates needs a trail connection thru the field from Skytop to Sunset Blvd. for pedestrians and cyclists.	0	0	43.084123	-77.531075	5/24/2021 21:55	
102	Original Comment	I am concerned about affordable housing for seniors (not far off in my future) as well as young families. Pittsford can be more than a temporary, transactional destination - prioritize opportunities to diversify our housing stock for the few parcels left - for the future health and viability of all of our community.	0	0	43.10985	-77.577381	5/24/2021 22:06	
103	Original Comment	Would love to see a sidewalk on Mitchel Road and across the bridge going from 96 to the canal trail	0	0	43.137463	-77.536612	5/24/2021 23:37	
104	Original Comment	Save the Trees! The Trees lining Jefferson Rd are a valuable resource to preserve that is unique to Pittsford. Ensure Zoning requires deep setbacks from roads and maintain a thick forested barrier between the road and any new developments.	0	0	43.071796	-77.49258	5/24/2021 23:38	

Commercial & Mixed Use

Thread ID	Thread Type	Comment	Upvotes	Downvotes	Latitude	Longitude	Date & Time	Notes
1	Original Comment	Potential for re-development to include mixed use such as shops on first floor and apartments above.	9	19	43.102173	-77.53685	3/17/2021 15:50	
2	Original Comment	Some 3 or 4 story buildings would be ok along Monroe Ave.	5	21	43.097411	-77.532449	3/22/2021 7:47	
3	Original Comment	Modify the zoning regulation to prohibit any LED or neon illuminated signage on the buildings in the MATZ Zone. This zoning was created to buffer the heavy commercial area further down Monroe Ave and to keep it consistent with the transition between Pittsford Plaza and the Village line. Neon and LED Building signage is not appropriate with the other mixed use in this area.	17	0	43.09517	-77.525282	3/24/2021 13:09	
3	Subcomment	I get that you don't want it to look big box commercial, but LEDs are energy saving, good eco ways to light with low energy and no heat. Perhaps something on size and brightness would be more appropriate rather than outlawing useful eco-tech!	3	3	43.09517	-77.525282	3/27/2021 14:48	
4	Original Comment	Please consider specifically allowing fueling (gas) stations in the commercial zone on Monroe Avenue. We only have a single station in the Town(the Speedway on Monroe). It is preexisting, non-conforming. We should make it specially permitted, along with other places on Monroe. We need to allow construction of a convenience store type business like we see in the Basin (the former Hess). We should be able to get gas and other conveniences that are offered by the modern fueling store/facility.	2	15	43.079295	-77.546997	3/26/2021 11:41	
4	Subcomment	Aren't we all going to be electric soon? Is Bushnell Basin really that far away? How about a cafe/pub/restaurant/produce stand with electric chargers, an outdoor play area and walkways/bikeways through the green spaces to housing areas?	2	0	43.079295	-77.546997	3/27/2021 14:52	
4	Subcomment	As you can see from the number of dislikes, people prefer to keep the character of neighborhood as is and do not mind the very short drive to the existing gas & convenience stores. I personally gas up in Henrietta where the gas is substantially less expensive. Also, once you change the zoning, who could prevent to build another car wash there?	1	0	43.079295	-77.546997	5/24/2021 12:40	
5	Original Comment	3-4 storey, commercial first floor, residential above, parking concealed - behind buildings, underground, in parking garage.	4	16	43.103841	-77.541504	3/26/2021 18:07	
5	Subcomment	As a Pittsford resident living close to the Plaza, I am strongly against changing the zoning to allow mixed use buildings: the existing traffic is already bad enough, I can't imagine how bad the traffic would become if we are going to add mixed usage buildings in the area.	5	0	43.103841	-77.541504	3/29/2021 10:40	
5	Subcomment	Urbanizing the suburbs' is a hot topic right now, yet I don't see reasons to urbanize Pittsford. We have many young parents living here and more are moving into Pittsford because of our wonderful school system, and we have variety of housing valued for all sorts of people.	5	0	43.103841	-77.541504	4/6/2021 12:00	
6	Original Comment	A walkable/bikeable cafe/pub/restaurant/produce stand with an outdoor play area and walkways/bikeways through the green spaces to housing areas would be amazing. even something on the fringe of Thornell Farm Park would be great. The food trucks were a great community bringer this summer, even in COVID! More of that!	12	5	43.043488	-77.517471	3/27/2021 14:56	
6	Subcomment	If you can't walk or bike to the village for that, you probably need to bike/walk more.	1	0	43.043488	-77.517471	4/28/2021 6:08	
6	Subcomment	I'd guess this comment is from someone not encouraging walking or riding kids or dogs, as well as not living on the outskirts of the map. The distance to the village isn't the biggest problem, but the road/trail safety is... and the village options don't have open green space play areas for families either. It's crunched in concrete and cars, not a relaxing environment in which to manage families.	0	0	43.043488	-77.517471	5/3/2021 13:40	
7	Original Comment	As a Pittsford resident living close to the Plaza, I am strongly against changing the zoning to allow mixed use buildings: the existing traffic is already bad enough, I can't imagine how bad the traffic would become if we are going to add mixed usage buildings in the area.	17	1	43.102044	-77.539394	3/29/2021 10:38	
7	Subcomment	Perhaps I don't understand the increase in traffic, but wouldn't the additional apartments create a situation where those residents are walking to the store/restaurants instead of driving? I think key to the change will be making the area safe to walk. It is not safe to walk there at the moment.	1	3	43.102044	-77.539394	4/2/2021 20:23	
8	Original Comment	I don not like mix use. Commercial and residential should be separated.	6	4	43.106748	-77.548714	4/6/2021 12:15	

Commercial & Mixed Use

Thread ID	Thread Type	Comment	Upvotes	Downvotes	Latitude	Longitude	Date & Time	Notes
8	Subcomment	Why should commercial and residential areas be separated? Can you defend your position beyond you don't like it? It's a good way to reduce pollution, increase foot traffic, and we would be able to get rid of parking lots and create more green spaces.	0	0	43.106748	-77.548714	5/24/2021 9:19	
9	Original Comment	I've been talking with a few neighbors and we feel that it would be nice to have a convenience store or produce stand, or something similar in this space where housing can't be built. I believe it is currently zoned residential, but this doesn't make sense. Yes, we want to preserve greenspace, but this corner doesn't provide well for housing or a park. It would be more useful in another form.	9	6	43.068445	-77.528699	4/7/2021 13:58	
9	Subcomment	There may not be enough foot traffic to make a convenience store economically feasible, plus once you change the zoning, who could prevent another car wash to be built there?	1	0	43.068445	-77.528699	5/24/2021 12:26	
9	Subcomment	Something like that would be bordering someone's home. Also, that is a very tricky intersection, with a significant blind spot. Some bad accidents have happened there without the distraction of a commercial property.	0	0	43.068445	-77.528699	5/25/2021 0:19	
10	Original Comment	To support bird species and the insects that provide their food, as well as supporting pollination of all plants, required for their continued existence, we should specify at least 70% of landscaping consist of native species in all residential, commercial, industrial, open spaces and park lands.	3	2	43.118653	-77.605019	4/7/2021 19:45	
11	Original Comment	Are there issues with bus stop shelters in zoning? Why don't our bus stops have shelters and benches?	1	5	43.114602	-77.576899	4/7/2021 20:29	
11	Subcomment	There is no need for bus shelters due to the low ridership in Pittsford. They are unsightly and will not contribute to the attractiveness/aesthetics of Pittsford.	4	0	43.114602	-77.576899	4/16/2021 9:14	
12	Original Comment	Please leverage Federal and State incentives for high efficiency HVAC (also even more efficient distributed HVAC from central sources) in any new commercial or industrial construction.	0	0	43.118904	-77.588024	4/8/2021 10:38	
13	Original Comment	Please consider incorporation in Zoning Design Standards of required Native tree planting density in Commercial and Industrial frontage (excellent illustration on p41 of Comprehensive Plan)	2	0	43.118966	-77.568712	4/8/2021 10:41	
14	Original Comment	Please consider leveraging the Town Capital Improvement Plan to incorporate Photovoltaic power production on municipal building rooftops, carport tops, currently fenced South-facing property borders and on unused open lands (mixed-use Agri-Photovoltaics, providing both partial shading and power, is strong in Europe and some areas of the U.S.).	1	2	43.114581	-77.596951	4/8/2021 10:53	
15	Original Comment	Please consider leveraging the Town Capital Improvement plan to retrofit existing municipal building heating plants with Heat Pump HVAC systems for both cost savings and sustainability.	0	1	43.11151	-77.604589	4/8/2021 11:04	
16	Original Comment	The Auburn(?) trail from Village to Pittsford Plaza area is a good corridor for non-automobile travel to these shops, eateries, etc. and it could be improved. Furthermore, behind the plaza area (north side of Monroe) needs to have a bike lane built along and behind the stores, bike racks installed in several locations, and easy access to cross Monroe Ave.	6	0	43.102926	-77.534122	4/8/2021 14:57	
17	Original Comment	Trail from canal trail to the historic lock behind Pittsford Plaza could be upgraded to allow easy bike and pedestrian access to the shopping center (and hence also connect with the Auburn Trail that leads into the plaza across Monroe from Pitts Plaza -- if a dedicated bike route thru the maze of parking lots were provided!)	6	1	43.100687	-77.54159	4/8/2021 17:02	
17	Subcomment	These improvements should come along with adding a sidewalk to French Rd between Clover St/Monroe Ave. Increasing pedestrian/vehicular/bicycle traffic on this busy, narrow, dangerous section of French Rd should come with increased safety for pedestrians.	0	0	43.100687	-77.54159	5/3/2021 15:35	
18	Original Comment	This transitional region would be good for 2-3 story mixed use buildings, preferably closer to road than current sprawl of low warehouse type buildings. These could provide a lot of additional residence units and small shops and services; centrally located and easy distance to both center village and the major commercial area of Pitts Plaza. NOTE that any such new building must meet NY Stretch code and include at least rooftop solar and/or geothermal heating/cooling.	2	12	43.097303	-77.526054	4/8/2021 17:11	

Commercial & Mixed Use

Thread ID	Thread Type	Comment	Upvotes	Downvotes	Latitude	Longitude	Date & Time	Notes
19	Original Comment	One way Towns can help lower temperatures for their residents, visitors and the planet is to install different versions of green roofs. They can be productive, beautiful and inspiring. Any new or remodeled commercial businesses should also paint their roofs white (at the very least). Solar panels should be also installed, with permeable pavement in the parking lots.	4	2	43.102988	-77.587166	4/12/2021 15:37	
20	Original Comment	Whatever development is considered, numerous trees (Oak, Sugar Maples) should be planted to provide natural shading and cooling. A playful water feature should be added for people and pets to, additionally, cool off. If the experience of a new complex is too hot to enjoy, less people will be enticed therefore it is for naught and I can still shop in my pjs. So however it is designed the builders should be forward-thinking about making the entire visit enjoyable.	5	0	43.102612	-77.570686	4/12/2021 15:46	
21	Original Comment	I am unsure if this is a Zoning comment, but I'd like to see if its possible to design 4 quadrants of "Markets and More". The concept is a resident could ride their bike or walk to a quadrant and buy basic needs inc. foods. They could be little stalls for businesses to sell their earth-friendly wares. Although this idea needs more composition, it supports the trend of self-reliance and not driving everywhere, often but rather trying to get us all off our cars and engaging more with neighbors.	2	3	43.099729	-77.595406	4/12/2021 15:53	
22	Original Comment	I would love to have a small cafe, restaurant, meeting place here. It would be great to have a spot to grab a snack or smoothie with the kids while taking a walk or a bike ride in this area of town. I think it would also be nice for the Barker Middle School students and the P-M Highschool students to have a spot to meet up with each other without having to go all the way to the Village.	6	7	43.054121	-77.518876	4/15/2021 10:00	
22	Subcomment	Not sure about the specific location, but it would be nice to have some area of commercial or mixed use in the southern half of the town. Right now there's really nothing in walking distance if you're too far from the village. Maybe there's not enough density to support something like that around here? But someone should be allowed to try if they want to.	0	1	43.054121	-77.518876	5/6/2021 17:24	
22	Subcomment	There is not going to be enough consistent foot traffic to run a coffee shop there economically feasible, plus once you change the zoning, who could prevent to build another car wash there?	1	0	43.054121	-77.518876	5/24/2021 12:31	
23	Original Comment	Please consider leveraging the Town Capital improvement plan to retrofit existing municipal buildings, that could serve as resiliency hubs for the community during climate or grid emergencies, with V2B capabilities so that the emerging fleet of electric buses can serve as mobile energy sources.	0	3	43.112137	-77.565966	4/19/2021 14:42	
24	Original Comment	Please permit mixed-use agricultural + photovoltaic power production on existing agricultural lands. Agri-photovoltaics have been proven synergistic, particularly for crops that grow better with some shade. In agricultural use where harvesting requires uninterrupted space, permit PV power production along the edges of fields.	1	1	43.109443	-77.585707	4/19/2021 14:50	
25	Original Comment	Permit photovoltaic panels (e.g. thin-film PV) as translucent panels on greenhouses to provide some necessary shading in conjunction with power.	1	0	43.119468	-77.577553	4/19/2021 14:52	
26	Original Comment	Golf courses - plant NY native and avoid pesticides and fertilizers to keep the neighborhoods surrounding them healthy. Golf courses are exclusive because of high yearly fees. Benefits are minimal to most Pittsford residents.	3	0	43.108746	-77.533115	4/19/2021 15:30	
27	Original Comment	Hammondsport and Skaneateles are examples of places that attract tourism. How can we make Pittsford a similar destination. Reconsider the Wilmore project? Maybe a winter space on the canal or trail for snow shoeing or ice skating (a winter festival similar to Ottawa's). I wish Lollipop Farm would put an annex at Schoen Pl, where people could walk the shelter dogs on the canal path.	4	0	43.115332	-77.585449	4/21/2021 7:22	
28	Original Comment	I would be really interested in having an Aldi in Pittsford	1	4	43.101986	-77.577553	4/25/2021 12:38	
29	Original Comment	Recommended changes to the code; establish maximum parking ratios for commercial development, adopting a model shared parking agreement, establish standard parking space sizes, allowing pervious materials to be used for spillover parking areas, requiring that a minimum percentage of parking lots be constructed with depressed landscaped areas that can absorb stormwater runoff (where feasible), These changes will help to reduce stormwater runoff.	2	0	43.119355	-77.593861	4/28/2021 9:42	

Commercial & Mixed Use

Thread ID	Thread Type	Comment	Upvotes	Downvotes	Latitude	Longitude	Date & Time	Notes
30	Original Comment	Maintaining this area as a natural buffer between the plaza and the residential community on the south side of French Rd should be a priority. Developing this strip would really change the character of the northern edge of the Long Meadow Neighborhood and I think restricting any development to the Monroe Ave side should be considered for aesthetic, access, and traffic reasons. Please maintain this buffer.	4	1	43.10009	-77.537427	5/3/2021 15:46	
31	Original Comment	I support mixed use development. Mixed use development would make Pittsford more accessible for people with lower incomes as well as would allow for more walking/biking instead of being so car-dependent to get everywhere (which also helps seniors, people with disabilities, others without a personal vehicle)	0	2	43.1075	-77.574806	5/13/2021 15:47	
31	Subcomment	How mixed use development would allow for more walking/biking? More walking, biking, hiking YES! More development that would ruin the character of Pittsford, NO!	1	0	43.1075	-77.574806	5/24/2021 13:01	
32	Original Comment	Can we please have a gas station with a small convenience store placed somewhere near the intersection of Clover and Jefferson? Those of us in the area have to travel to Monroe Ave, the Village or several miles down Jefferson Rd for gas or a quick convenience item. The intersection already supports commercial enterprises (YMCA and Gallea's) so it shouldn't be a stretch to add something like this.	1	4	43.087022	-77.54262	5/19/2021 15:27	
32	Subcomment	With the YMCA there, the intersection is becoming a traffic nightmare, particularly during a rush hour. Is it really that bothersome to drive a short distance to the Winton & Jefferson intersection for a cheap gas with plenty of convenience stores? Also, once you change the zoning, who could prevent to build another car wash there?	1	0	43.087022	-77.54262	5/24/2021 12:47	
32	Subcomment	Agree this area is not appropriate for a gas station with the YMCA and an already busy intersection. I don't think the nearby residents would appreciate adding a gas station for nominal convenience of some residents.	0	0	43.087022	-77.54262	5/25/2021 0:32	
33	Original Comment	No mixed use areas south of the village means that residents who aren't close enough to walk (and biking into the village is not very safe with the current infrastructure) have to drive. Allowing small local shops similar to Powers, and things like coffee shops where people can meet up, would increase walkability of the town and reduce the amount of short car trips currently congesting the town and village.	2	0	43.072682	-77.519789	5/24/2021 7:38	
33	Subcomment	Building a coffee shop in the middle of a residential neighborhood does not make sense. There is not going to be enough foot traffic to make it economically feasible, plus once you change the zoning, who could prevent to build another car wash there?	2	0	43.072682	-77.519789	5/24/2021 12:20	
34	Original Comment	Pittsford needs to consider more mixed use zoning in the suburbs. Having grocery stores, restaurants, and other locally owned businesses within walking distance of residents would reduce car usage and village congestion. I live just south of the Village and I can't get groceries without having to get into my car. Even the walk down to the Village is a little too long to be comfortable.	0	2	43.104116	-77.602615	5/24/2021 8:26	
35	Original Comment	Reduce parking requirements, or add parking structure. The vast majority of parking spaces are not used. Current layout makes Pittsford plaza pedestrian unfriendly, this area needs to be rethought to make the space more efficient and friendly to non-car traffic. Parking in the back and businesses closer to the street could help with this.	0	0	43.101655	-77.539272	5/24/2021 9:31	
36	Original Comment	Using this space for commercial or mixed use purposes would degrade the surrounding neighborhoods with increased traffic, damages to the environment, and would decrease property values.	1	0	43.120768	-77.519424	5/24/2021 13:17	
36	Subcomment	I agree completely. This development changes the entire tone and tenor of the neighborhood n a very negative way.	0	0	43.120768	-77.519424	5/24/2021 15:26	
37	Original Comment	Pittsford should legalize mixed-use development, including retail, apartments, and small businesses throughout the town to promote the character of our village, not monotonous suburbia everywhere.	0	0	43.099395	-77.581558	5/24/2021 21:47	
38	Original Comment	Pittsford should allow commercial uses such as corner stores, coffee shops, and home-based businesses in residentially zoned areas.	0	0	43.101234	-77.569771	5/24/2021 21:48	

Commercial & Mixed Use

Thread ID	Thread Type	Comment	Upvotes	Downvotes	Latitude	Longitude	Date & Time	Notes
39	Original Comment	Monroe Ave into the Village is overcapacity and has left the Village with serious issues like residents being unable to leave their driveways during peak hours, employees unable to leave for lunch, etc. This is a serious environmental concern. The existing zoning in the Monroe Ave corridor has led to cumulative negative impacts that could never be properly evaluated one project at a time. Rework of zoning to reverse this cumulative environmental impact is needed.	0	0	43.093838	-77.523694	5/24/2021 23:27	
40	Original Comment	Where are the Trees? Mature dense tree stands along Jefferson Rd differentiates Pittsford from Henrietta. What happened here?	0	0	43.087602	-77.545012	5/24/2021 23:40	
41	Original Comment	Why doesn't Monroe Ave look like the Monroe Ave Design Guidelines? A tree lined boulevard with planted median would look way better! This plan has been around for 20 years.	0	0	43.103098	-77.538843	5/24/2021 23:49	

Canal

Thread ID	Thread Type	Comment	Upvotes	Downvotes	Latitude	Longitude	Date & Time	Notes
1	Original Comment	Insure future uses of land adjacent to the Canal do not negativity impact existing neighborhoods	11	0	43.090154	-77.538648	3/17/2021 15:56	
2	Original Comment	The Rail Loop is a frequently enjoyed resource by tangent owners as well as visitors (group runs, etc.) and, hopefully, will remain relatively unchanged following any revision to current planning/zoning. It serves as a vital buffer between residential and commercial as well as a safe place for outdoor enjoyment (instead of walking along Clover/French/Monroe, etc.). Thank you.	10	0	43.103427	-77.543655	3/19/2021 9:47	
3	Original Comment	Ice skating on the canal would be a great addition	6	0	43.116455	-77.587465	4/7/2021 20:52	
3	Subcomment	Ice skating on the canal would be wonderful. East Aurora as ice skating right in the middle of their village and it is such a novelty and gathering spot in the winter. Having one on the canal would be a great use of the waterway in the winter months, not to mention a really fun destination!	0	0	43.116455	-77.587465	4/21/2021 18:31	
4	Original Comment	Would like to see more opportunities for families to gather near the canal. Summer concerts are great, but fire pits in winter and places where families can meet and hang out.	11	0	43.103364	-77.583733	4/13/2021 19:05	
4	Subcomment	I would like to see more winter activities around the canal too -- like someone mentioned ice skating. Fire pits and other activities should be considered.	0	0	43.103364	-77.583733	5/24/2021 17:57	
5	Original Comment	I would love to see a kid-friendly destination at the canal - like maybe a splash park area near the canal, like the "river" they have at the zoo for the kids to splash in. It would be easy to incorporate the history of the canal into something like this, and would provide a safe and fun alternative to feeding the ducks...which is nerve-racking for parents. We're all just watching and hoping our kids don't fall in!	1	0	43.172384	-77.590942	4/21/2021 18:36	
6	Original Comment	Ice skating/winter festival on the canal would be a great addition to our community	1	0	43.114393	-77.567768	5/13/2021 15:48	
7	Original Comment	There is a sign about a potential development on Monroe right outside of the village, along the canal (by the train tracks). I have lived here 3.5 years and haven't seen any activity/progress. Is this development happening? Will it include low income/mixed income housing? I don't think any new housing should be developed along the canal unless it is inclusive.	0	0	43.100356	-77.568283	5/13/2021 15:49	
8	Original Comment	Would love to see more picnic tables along the canal and maybe the ability for permitted street vendors to sell from carts at certain places along the canal. How great would it be to stop for a soda, hot dog, donut, taco or something as you walk or bike along the canal?	0	3	43.115538	-77.574549	5/19/2021 12:40	
9	Original Comment	Canal trail is a wonderful public resource (and a connector to so many other regional towns, etc.). It should remain free of "development" [i.e., commercial venues, new residential]. Forested areas along trail should be kept forested (and indeed could be improved with a bit of maintenance, such as replacement of junky invasive species!)	3	0	43.104277	-77.602444	5/20/2021 13:58	

General

Thread ID	Thread Type	Comment	Upvotes	Downvotes	Latitude	Longitude	Date & Time	Notes
1	Original Comment	Any Commercial development should preserve and enhance the Auburn Trail.	16	0	43.104833	-77.537395	3/15/2021 12:31	
2	Original Comment	In the interest of walkability, we need more sidewalks. I see many HS kids walking home south on 64. Please consider adding sidewalks south on 64 to Hedgewood. This would also enable many families to safely walk/bike into the village. This is a 40 or 55 MPH road, so it is not safe to walk or bike on the shoulder.	11	0	43.042045	-77.51524	3/22/2021 7:42	
2	Subcomment	Perhaps linking together some trails would be helpful for this. The new development will make this more dangerous if nothing else changes.	1	0	43.042045	-77.51524	3/27/2021 15:00	
3	Original Comment	Solar or wind could go here.	5	6	43.038548	-77.510058	3/22/2021 7:49	
3	Subcomment	I'm curious why there are dislikes with no discussion? If we need to move off petrochemicals for the future, shouldn't we be encouraging solar and wind in places where they can blend in and help?	1	0	43.038548	-77.510058	3/27/2021 15:02	
4	Original Comment	We should be managing the green spaces and land for fewer invasives such as phragmites and more native landscapes that will help our ecosystems survive the coming climate change and re-populate our pollinators.	12	0	43.105746	-77.596779	3/27/2021 15:07	
5	Original Comment	Additional safe walk/bike ways to link together the green print spaces and the neighborhoods without requiring the use of a car to gather for a meal, beverage, ice cream, or such would be wonderful! Being less car dependent for play and gathering would make this a much nicer town for retirement as well as children.	11	0	43.101986	-77.580986	3/27/2021 15:23	
5	Subcomment	Good news! There are many new sidewalk and trail connections planned in the Town's Active Transportation Plan. They are intended to do exactly what you are suggesting. Thanks for supporting these efforts.	0	0	43.101986	-77.580986	5/3/2021 17:56	
6	Original Comment	I would like tree preservation where we respect the long lived trees and protect trees within the 17 foot easement, so trees cannot be removed without extreme need based on safety.	5	3	43.100086	-77.568322	4/2/2021 19:44	
6	Subcomment	Trees are important, but it is also important to consider the needs of the property owner. Already there are rules about where one can plant and how that plant must be maintained, with considerations given to easements, right-of-ways and sidewalks.	0	0	43.100086	-77.568322	4/6/2021 20:19	
6	Subcomment	Establishing a standard that trees in the easement can't be removed without permits or town approval would create a high burden on both property owners and the town. Are we going to require a permit (and fee) to remove such a tree? Will a town employee need to inspect the tree to insure it "must" be removed?" This is not a highly paymented city environment where the loss of an individual tree could be very detrimental to the environment. This seems like unnecessary oversight and that it wo	0	0	43.100086	-77.568322	4/6/2021 20:20	
6	Subcomment	would require an increase in the town budget. We should trust our local citizens to maintain their properties.	0	0	43.100086	-77.568322	4/6/2021 20:21	
7	Original Comment	It would be great if we could get a sidewalk on Van Voorhis Rd. There is a lot more families and dog walkers. The cars go speeding down the street at 45-50mph and do not always move over if you are walking.	3	0	43.044507	-77.509639	4/3/2021 14:28	
8	Original Comment	Can we institute a ban on gas fired leaf blowers similar to several NY communities (i.e. Village of Larchmont, Village of Irvington, Town of North Hemstead) .	2	8	43.106122	-77.586308	4/7/2021 19:39	
9	Original Comment	To support bird species and the insects that provide their food, as well as supporting pollination of all plants, required for their continued existence, we should specify at least 70% of landscaping consist of native species in all residential, commercial, industrial, open spaces and park lands.	4	1	43.118277	-77.602272	4/7/2021 19:45	
10	Original Comment	Implement NY Stretch Energy codes NYStretch Energy Code – NYSERDA developed NYStretch as a statewide model code for New York jurisdictions to use to meet their energy and climate goals by accelerating the savings obtained through their local building energy codes.	3	3	43.101359	-77.591629	4/7/2021 19:56	
11	Original Comment	Can we manage or at least have some kind of public reporting of the pesticide use at the golf courses	2	0	43.114017	-77.567253	4/7/2021 20:03	
12	Original Comment	Zoning should allow ground and rooftop solar as well as micro wind	5	2	43.113341	-77.588868	4/7/2021 20:14	
13	Original Comment	Zoning that encourages farm stands and multi-culture farming	5	0	43.105646	-77.570214	4/7/2021 20:16	
13	Subcomment	Good news! Pittsford has right-to-farm laws, in addition to state and county right-to-farm regulations. Our current zoning permits farm stands in a way that is intended to encourage them. Let us know if there are specific changes you think we can make to make farm stands easier to operate.	0	0	43.105646	-77.570214	5/3/2021 17:54	

General

Thread ID	Thread Type	Comment	Upvotes	Downvotes	Latitude	Longitude	Date & Time	Notes
14	Original Comment	Allow chickens in the town as well as the village	4	6	43.112792	-77.601379	4/7/2021 20:17	
14	Subcomment	Good news! Chickens are allowed in the Town. The issue is that distance coops have to be set back from the property line is too long for many lot sizes. We are looking into modifying the requirements to make coops possible for more residents. Stay tuned.	0	1	43.112792	-77.601379	5/3/2021 17:51	
15	Original Comment	A town composting facility should be planned for	7	0	43.102801	-77.602736	4/7/2021 20:38	
16	Original Comment	Zoning should not prohibit shared or lending facilities such as tool libraries	2	0	43.117275	-77.585793	4/7/2021 20:42	
17	Original Comment	Care and thought should be put into enabling and at least removing any barriers to microgrids and energy storage at both the residential, commercial and municipal level	2	0	43.10631	-77.575235	4/9/2021 13:03	
18	Original Comment	For any construction, zoning code change, etc., climate change must be the major driver of design! For example, zoning needs to incentivize and simplify the process of installing solar, geothermal, or wind by homeowners and businesses. Likewise, large-scale solar should be allowed and quickly developed. Local power generation enhances community resiliency.	7	3	43.119303	-77.563305	4/10/2021 20:42	
19	Original Comment	ALL new construction and renovation, both residential and commercial, should be required to be designed to meet NYStretch building code. No new natural gas service should be installed.	3	4	43.099126	-77.573433	4/10/2021 20:47	
20	Original Comment	In order to enhance soil health and ecological health, and grow nutritious food, regenerative farming needs to be adopted (everywhere, including Pittsford). Could we start by requiring that when land is leased from the town for farming, regenerative techniques are used? A program to educate and assist farmers with such conversion, and/or some incentives to attract organic / regenerative farmers to use these lands might be a way to jump start this important process.	2	2	43.098386	-77.56176	4/10/2021 21:11	
20	Subcomment	And/or hire the farmers to work with our community to develop gardens generating plants as food, initially for our use at lower cost and hopefully in 7 years be able to distribute elsewhere at full fee.	1	0	43.098386	-77.56176	4/13/2021 9:23	
21	Original Comment	There are several changes to the zoning I would like to see happen 1. Allow backyard fowl including chickens not roosters (too noisy), turkeys and ducks. 2. Allow small rooftop or yard wind turbines that have recommended rules for safety,ie-wind load recommendations so they do not break or fall down and cause harm. 3. Keep all agriculture districts! Make sure there are no restrictions such as no pesticide use on the farms. 4. Allow "in law apartments	1	0	43.028494	-77.687931	4/12/2021 11:34	
22	Original Comment	A general comment: I believe the Town should invest the time and energy in a Climate Action Plan which would then guide decisions and goals for this Zoning plan and how it plans to build a climate-resilient Town. When a plan is laid out, the design then follows. For example, all future road construction for Town land and new neighborhoods should be built with permeable pavement. It would help capture pollutants and manage our runs offs while using more environmentally friendly materials.	5	0	43.11859	-77.594461	4/12/2021 15:27	
23	Original Comment	I would love this Town parcel to have a small cafe / bakery / deli. I live in this neighborhood and there is absolutely nothing near us except schools. I think a small cafe would be wonderful and have lots of business from neighbors and teachers. The lot is currently unused and not even wooded or pretty in any way. Other neighbors have also agreed a cafe of some sort would be a great addition	3	4	43.068582	-77.528345	4/14/2021 20:04	
23	Subcomment	I am curious if the poster is familiar with the spot. It is not very big, and on the other side of the trees is a home. It could not possibly accommodate a cafe. The intersection is also not safe enough for a commercial stop. I have noticed a number of posts on here that address the interest of people in the Southern part of town in having cafes or coffee shops when these amenities already exist mere miles away.	0	0	43.068582	-77.528345	5/25/2021 0:44	
24	Original Comment	Thornell Farm Park needs a lot more shade. It's way too sunny and hot in the summer on the playground. I think it would also be nice to pave the running/biking path around the park and fields for strollers and bikes.	9	0	43.05786	-77.518717	4/15/2021 12:01	

General

Thread ID	Thread Type	Comment	Upvotes	Downvotes	Latitude	Longitude	Date & Time	Notes
25	Original Comment	Given the climate emergency, it is absolutely critical that all opportunities for installation of solar arrays be embraced and incentivized / allowed. Not only on all possible rooftops, but also larger arrays in open areas such as edges of fields and farms, periphery of subdivisions, etc. where they could be incorporated into plantings of pollinator-friendly wildflowers. This seems like an obvious win-win: improvement of habitat for insects and others, AND generation of clean electricity.	4	1	43.107008	-77.603989	4/19/2021 10:12	
26	Original Comment	King's Bend Park has the potential to be a high-quality "anchor" for pollinators. The park is situated on canal water and has a wetlands area. NY native trees, shrubs, and perennials should be planted to provide a haven for wild bees and birds. Pesticides should not be used. Signage could designate it as part of the Pollinator Pathway.	8	0	43.087045	-77.534066	4/19/2021 14:30	
27	Original Comment	Native plant buffers are needed around all sides of an agricultural field do pesticides and soil dust don't drift onto neighborhood lawns and gardens.	1	1	43.115359	-77.575335	4/19/2021 15:43	
28	Original Comment	We need to know the herbicide and fertilizer use on small farm parcels scattered throughout the town often adjacent to housing developments.	0	0	43.119626	-77.571683	4/19/2021 15:46	
29	Original Comment	I would like to create a business consortium that makes Pittsford a tourist hub based around the Erie Canal. In this regard, here is what I see: a. A fleet of electric powered pleasure boats (for rent) of multiple sizes (powered by solar farms located along the canal). b. Shopping, dining, hotels/inns, condo developments along the canal. It has the potential to reduce the property tax burden of residents to ZERO.	1	2	43.090537	-77.549314	4/20/2021 11:17	
29	Subcomment	If you could mark on the Canal map where you would like to see the zoning permit those kinds of businesses, it would be a great help to the work of the committee. Thanks!	0	0	43.090537	-77.549314	5/3/2021 17:46	
30	Original Comment	I'd like to see this particular farming parcel of 7 acres be converted to a multi use Green Space Park. It is within a half mile walking distance of many homes on Toby Road and Mendon Center Rd. Adding some native understory trees and shrubbery would invite people to see wildlife close to home instead of the car trip to Mendon Ponds Park. Mendon Elementary School is right across the street. Easy access to teachers and students for science study and picnics.	3	1	43.070037	-77.526516	4/20/2021 13:21	
31	Original Comment	The Isaac Gordon Nature Park, with its 7 acres of farming land, would be the ideal location for aa organic farmer without use of pesticides negatively affecting the "nature" in the "nature park". A farm stand with organic produce would be of real benefit to the two large housing developments nearby. A small parking lot is there now.	5	0	43.049417	-77.564727	4/20/2021 13:35	
32	Original Comment	The Town and Village should identify strategic sites that could be used to develop senior housing. There is a severe need for senior housing in our community. As many in our community wish to age-in-place, it would be great for all residents to have equal access to quality independent senior housing options. While there are options available, these may not be within reach of all in our community or their families.	1	3	43.099917	-77.533779	4/20/2021 14:37	
33	Original Comment	I live on W. Jeff. Rd between Sutherland and S. Main and the traffic is so LOUD and so FAST that we can't even sit on our porch and have a conversation. Lower speed limits, & traffic calming on this specific corridor would help. Cars come shooting down the hill only to screech to a stop at the light. Speed bumps, gateways, how-fast- are-you-going signs, all of this would help. As would sidewalks on the other side of the street. We are cut off from our neighbors without them.	0	0	43.089576	-77.593689	4/21/2021 18:24	
34	Original Comment	Please do not allow "low income" or "subsidized" housing into Pittsford. I have witnessed towns where this has been allowed. It brings down property values, increases crime and brings down the quality of schools. Tour Greece NY as an example.	5	3	43.095718	-77.583046	4/24/2021 9:34	
34	Subcomment	I agree, zoning laws should not be amended to allow for low income, section 8, ADU's or whatever some folks want to disguise it as for the obvious reasons already mentioned. Its unfortunate a few individuals want to force change and create an issue that doesn't exist. Greece is the perfect example.	3	0	43.095718	-77.583046	4/29/2021 10:47	

General

Thread ID	Thread Type	Comment	Upvotes	Downvotes	Latitude	Longitude	Date & Time	Notes
35	Original Comment	In residential zones, trees removed that are greater than 8" diameter (measured 48" above ground) be replaced on the property with a 2" diameter tree. Solar panel installation should be specifically discussed during SEQR evaluation including elevated installation in parking lots. The Town limits tax exempt properties to the total assessed value of tax exempt properties in year 2020. ie- no more tax exempt property. Tax exempt properties sold would revert to taxable upon sale or transfer.	0	8	43.102738	-77.563133	4/26/2021 12:50	
36	Original Comment	I would love for the path along stone rd to be completed all the way to clover, and be widened (created?) on the connecting side towards Wexford gln. Also a cross walk mark with traffic light control button to ease the cross over clover rd along stone. It's a heavily walled area and it seems incomplete and unsafe.	2	0	43.077172	-77.546858	4/27/2021 12:36	
37	Original Comment	Implement changes to the code that provide better protection of stream buffers through the adoption of stream buffer Ordinance that protects 75 feet along a stream, wetland, steep slope or floodplain, and better preserve woodlots by defining areas that should be preserved and adding language to protect them from new development, similar to what has been adopted by other municipalities in the County.	1	0	43.120357	-77.577553	4/28/2021 9:44	
38	Original Comment	Any thought to decreasing the speed limit on Clover?	2	0	43.114769	-77.605877	4/28/2021 17:14	
38	Subcomment	We are trying! Clover is a state road so the only agency that can lower the speed limit is the NYS Dept of Transportation. Rest assured that we have been advocating strongly to lower the speed limit and will continue to be vocal about this. Town governing is 100% with you on this.	0	0	43.114769	-77.605877	5/3/2021 17:49	
39	Original Comment	Please leave this green space "forever wild", as promised when we bought this house. We do NOT want a trail put through the woods so that the people in the new neighborhood can walk in our backyards. We highly value our privacy and do not want foot/bicycle traffic coming into Copper Woods from the new Escena Rise neighborhood. This includes the path currently being used between #40 and 42 Copper Woods. They are currently entering our street using our PRIVATE DRIVE and it bothers us to no end.	1	0	43.054774	-77.53328	4/30/2021 10:25	
40	Original Comment	There is a need for a wider variety of housing options within Pittsford. Particularly I would like to see more affordable housing options (e.g. apartments, multi-family units) to support young individuals and families as well as downsizing seniors. We need housing suitable for the people who would work in the retail and business establishments of the town.	2	0	43.106686	-77.565622	5/10/2021 14:12	
41	Original Comment	In any new development - can we require as few trees are cut down as possible? Also planting of native plants. This would apply to residential, commercial, and development along the canal.	1	2	43.110759	-77.582531	5/13/2021 15:51	
42	Original Comment	Equity, inclusiveness, and the climate should drive any and all decisions Pittsford makes in its zoning. We need to be a town that is more open and accessible to people of all income levels and all backgrounds. The bus route along Monroe can and should be leveraged to make Pittsford a more welcoming and inclusive town than it is. (If zoning could place a limit on the size/cost of houses, I'd recommend that - but I don't think that's possible!)	2	0	43.10938	-77.591801	5/13/2021 15:54	
43	Original Comment	Overall comments: keep green space, more sidewalks, inclusive housing.	1	0	43.11928	-77.586823	5/13/2021 15:55	
44	Original Comment	The Lusk Greenspace is really nice, but parking, access and signage are an issue. Please consider adding a well marked and maintained path from Pittsford/Mendon Rd sidewalk to the green space. If parking is available at the old school house, it would be nice to have a sign saying so.	0	1	43.075173	-77.517214	5/19/2021 15:42	
45	Original Comment	Now that there are sidewalks along Calkins Road, there could be a crosswalk here with a crossing guard. I'm envisioning the same st-up as there is at Calkins and old Kings.	0	0	43.068449	-77.53335	5/19/2021 21:56	
46	Original Comment	I know the school district is somewhat independent of the town. But I think town zoning needs to be designed such that it specifically allows, encourages, and/or incentivizes the schools to go solar as soon and as easily as possible.	1	0	43.098123	-77.606049	5/20/2021 15:51	

General

Thread ID	Thread Type	Comment	Upvotes	Downvotes	Latitude	Longitude	Date & Time	Notes
47	Original Comment	I applaud the statement in Comprehensive Plan “seek partnerships and... expand the Town’s Greenprint...” and the stated support of local agriculture. Both are critically important. Sadly, the majority of farms I’ve noticed do not grow food for people. 1. Growing and selling fruits and veggies locally must be incentivized; 2. farmers should be encouraged and assisted in converting to regenerative methods. We would all benefit from these actions!	0	1	43.097885	-77.597809	5/22/2021 18:22	
48	Original Comment	Urging the town to work with the state in completing the .4 of a mile of sidewalk between Greenpoint Trail and the Schottland YMCA	0	0	43.087159	-77.555634	5/23/2021 17:24	
49	Original Comment	It would be great to have sidewalk on Jefferson Rd up to the YMCA. It would create a safe area to walk between Locust Hill and the Y.	1	1	43.082931	-77.516956	5/24/2021 9:41	
50	Original Comment	Why is the parkland off of Marsh Rd & across from Arlington Dr, not promoted or used? Seems to be a nice parcel that's a hidden gem, and has been that way for years. Is it a brown field?	0	0	43.089466	-77.487001	5/24/2021 10:44	
51	Original Comment	I strongly urge the Town of Pittsford to plan for affordable housing, as well as additional housing for seniors. This would strengthen Pittsford as a community, and contribute to the well being of the greater Rochester area.	1	0	43.11552	-77.578754	5/24/2021 11:16	
52	Original Comment	There is an issue with the speed limit signage for the 55 mph stretch of Jefferson Rd between Bushnell's Basin and the village. People consistently drive way over or way under the speed limit and it's very difficult to pass because of the way the road curves making it hard to see. I'd like to request additional 55 mph speed limit signage be added.	1	0	43.068872	-77.490306	5/24/2021 15:48	
53	Original Comment	I would love to see the sidewalk extended on the east end of Thornell road all the way to Jefferson Rd. Right now the curve is very dangerous to walk on with no sidewalk and the one crossing north of Daffodil Meadow needs improved crosswalk signage as people drive fast around the curve and down a hill right into the crosswalk. People in the neighborhoods along Thornell should be able to walk to Bushnell's Basin and the canal safely!	1	0	43.055312	-77.488546	5/24/2021 15:50	
54	Original Comment	To meet the evolving needs of current Pittsford residents, auxiliary structures and separate entrance in-law/nanny apartments should be allowed to be separate family addresses.	0	0	43.042767	-77.506099	5/24/2021 16:32	
55	Original Comment	A traffic light and crosswalk here would be appreciated	0	0	43.074764	-77.495843	5/24/2021 16:43	
56	Original Comment	Separate addresses should be allowed for auxiliary structures and separate-entrance in-law/nanny apartments to accomodate changing needs without excessive new construction or apartment-style buildings.	0	0	43.108252	-77.581329	5/24/2021 16:53	
57	Original Comment	This is a very difficult to use website, both the map functions and the overall zoning website. It's also difficult to find from the main Town website. I hope the Town and consultants have a special plan to reach out to low-income folks in the Town, who are always underrepresented in public involvement process. Furthermore, were any materials made available in other languages? What is the plan for including non-native English speakers?	0	0	43.09998	-77.588196	5/24/2021 21:53	
58	Original Comment	I also noticed the initial Zoom meeting did not have closed captioning. I hope there is a plan to reach out to the Deaf community and make future meetings accessible to them.	0	0	43.113515	-77.587852	5/24/2021 21:53	