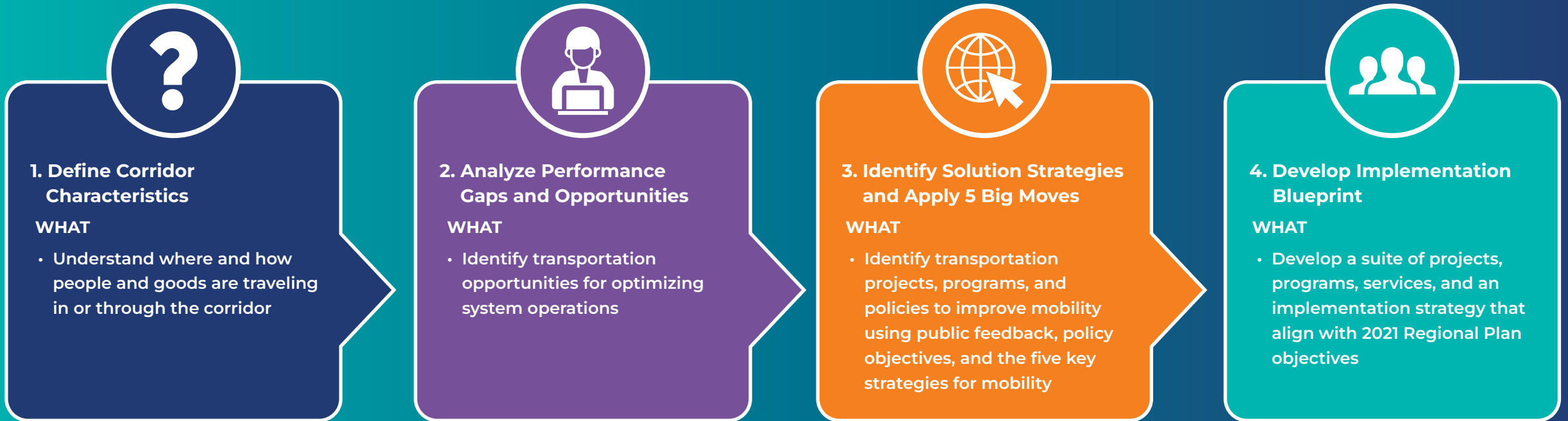


# Comprehensive Multimodal Corridor Plans

## What's included?



At each stage, public feedback will be incorporated to create solutions for the community

[sandag.org/CMCP](https://sandag.org/CMCP)

Call: (888) 317-8976 | Text: (844) 569-0570 | Email: [CMCP@sandag.org](mailto:CMCP@sandag.org)



SANDAGregion  
SDCaltrans



SANDAGregion  
D11Caltrans



SANDAGregion  
CaltransDistrict11



SANDAG  
SDCaltrans