



# PenMet Parks

## Parks, Recreation, and Open Space Plan Update

### Findings Presentation



**PenMet Parks**  
Parks For All. Parks For Life.

 **BerryDunn**

**Bernardo Wills**



# Project Team

## BERRYDUNN

Prime firm | Project management, community engagement, recreation assessment, visioning



**Teresa Jackson**  
Project Manager



**Barbara Heller**  
Engagement Manager



**Dave Peterson**  
GRASP® Team Leader



**Dannie Wilson**  
Subject Matter Expert

## BERNARDO WILLS

Subcontractor | Landscape architecture, design



**Dell Hatch**  
Managing Director of  
Landscape Architecture



**Bill LaRue**  
Landscape Architect

## RRC ASSOCIATES

Subcontractor | Survey design, research, and analysis



**Kailyn Haskovec**  
Research Analyst



# Findings Agenda

- ▲ **01** Why Do This?
- ▲ **02** Demographics
- ▲ **03** Survey Findings
- ▲ **04** Park & Facility: Inventory & Scoring
- ▲ **05** Park & Facility: Comparisons, Benchmarks and System Analysis
- ▲ **06** Next Steps



# Why Do This?

To address parks and recreation needs and opportunities with well-positioned long-range comprehensive goals, policies, strategies, and implementation measures. The PROS Plan will be a six-year guide and strategic plan for managing and enhancing park and recreation services.



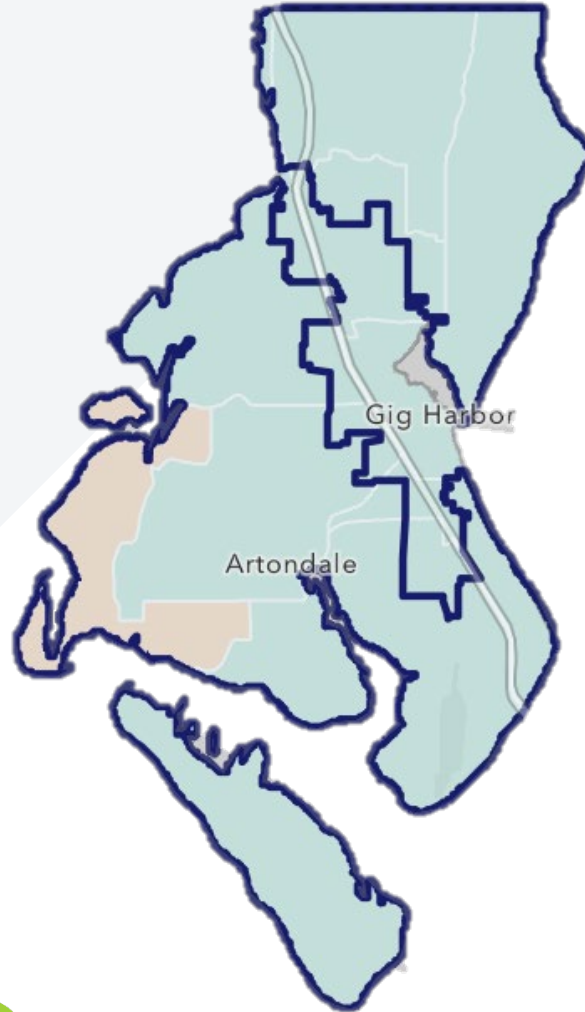
Through analysis and community engagement this Plan will:

- Identify service gaps
- Anticipate new recreation needs
- Evaluate operations and staffing needs
- Develop prioritization for new park and recreation facility acquisition and development
- Provide a plan outlining the park improvements required to implement Plan recommendations



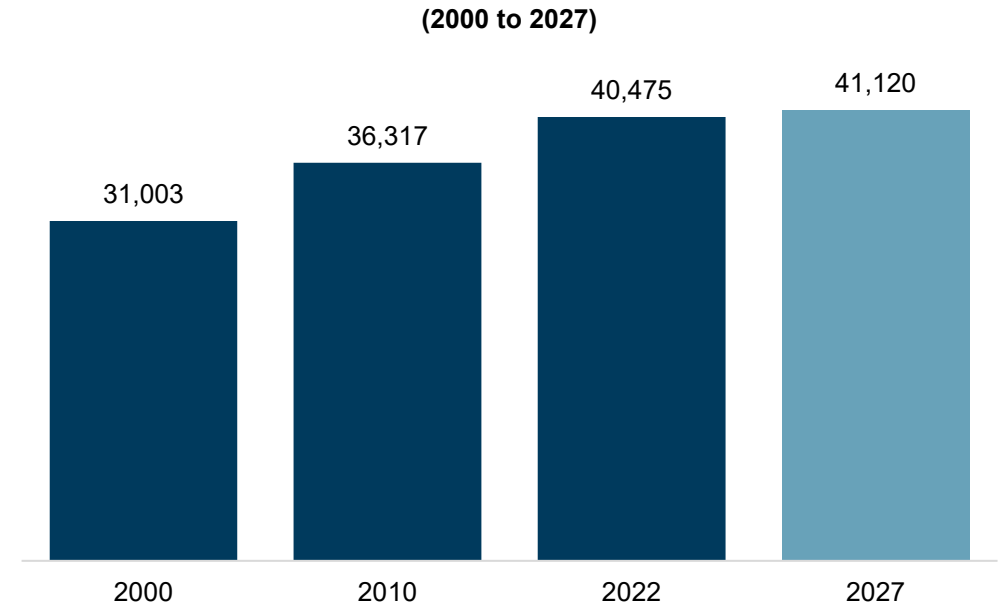
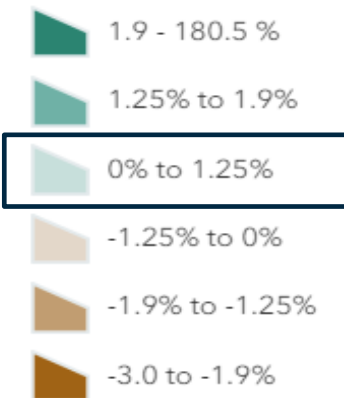
## Demographics

# Population



*Areas in tan are expected to slightly decline in population, while areas in blue are either expected to remain stable or grow slightly.*

2022-2027 USA Population Growth

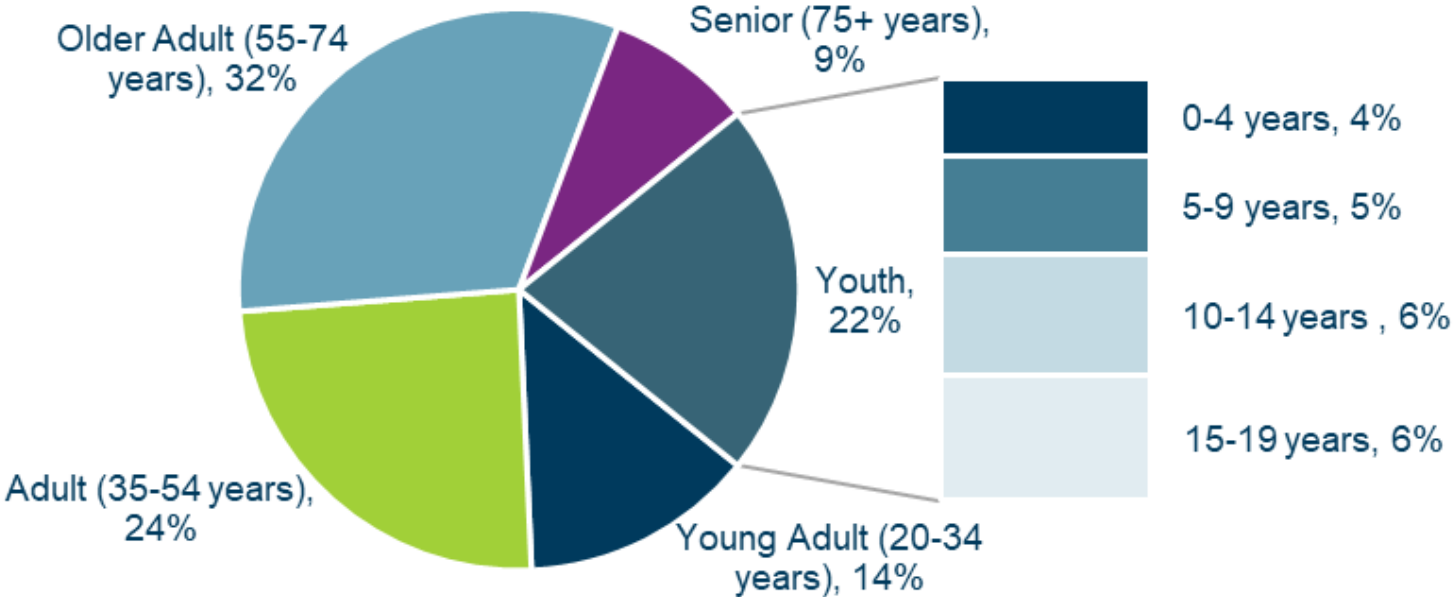


The Districts is projected to only grow 0.32% annually from 2022 to 2027.



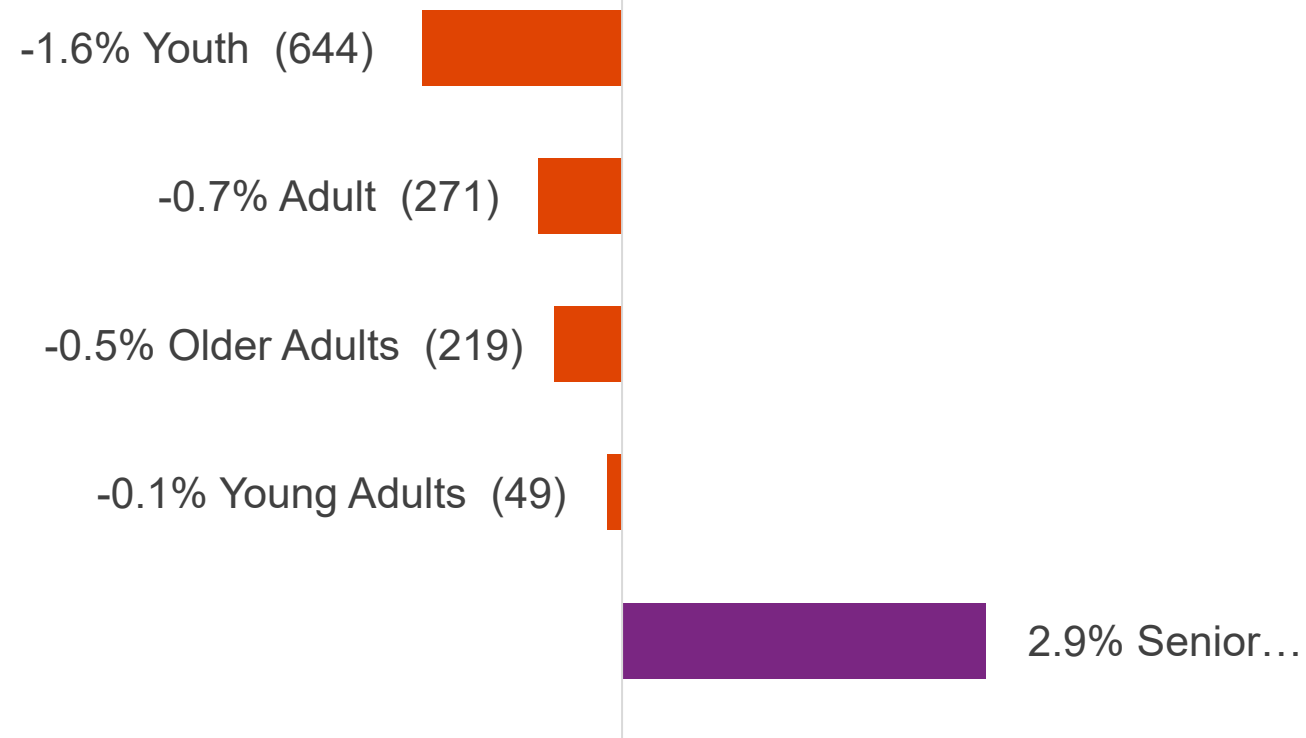
# Age Distribution

The **median age** of PenMet Parks residents was 48.4 years old in 2022, older than the median age in Washington (39) and the United States (38.9). The age group making up the largest percentage of the population is older adults (55 to 74 years) at 32% and adults (ages 35 to 54 years) at 24%. Youth make up 22% of the population.



# Age Growth by 2027

Over the next five years, **the age groups of youth, adults, and older adults and young adults are expected to decrease**, while **seniors are anticipated to increase**.





## Survey Findings

Creating meaningful places

Providing innovative experiences

Serving everyone in our community



# PenMet Parks

Parks, Recreation, and Open Space Plan Survey



SCAN ME



WE WANT TO HEAR FROM YOU!  
PenMet Parks invites your feedback regarding parks, recreation, and open spaces.



### We need your input! To participate:

- 1 Log onto [PenMetParksSurvey.org](https://PenMetParksSurvey.org) on your computer or phone. OR Scan the QR code with your phone to access the survey.
- 2 When asked, please enter this code: XXXXX

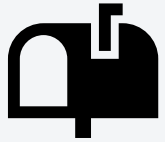
You can obtain a paper copy of this survey by emailing [info@penmetparks.org](mailto:info@penmetparks.org).

Please respond to this survey within 10 days to be sure your opinions are heard. The survey should take approximately 5-10 minutes to complete.

All surveys are collected by a 3rd party research firm and will be kept confidential.

# Research Methods

1 = Statistically Valid (Invitation Survey)



273

Invitation surveys completed  
+/- 5.9% Margin of Error

13,851 Postcards Mailed  
(13,327 delivered)

2 = Open Link Survey



669

Open Link surveys completed



Using U.S. Census Data, the age, gender and ethnicity distributions in the total sample were adjusted to more closely match the actual population profile of the **District**.

# Creating Meaningful Places



# Frequency of Use - Invite Sample

How frequently have you or members of your household visited the following PenMet Parks' sites?

			At least once a week	A few times a month	At least once a month	A few times a year	Have not visited
Sehmel Homestead Park	Invite	n=252	20%	15%	20%	35%	9%
	Open	n=596	18%	22%	26%	30%	3%
Cushman Powerline Trail	Invite	n=244	11%	15%	8%	48%	18%
	Open	n=586	10%	11%	13%	50%	16%
Narrows Park	Invite	n=242	2%	8%	11%	54%	25%
	Open	n=575	1%	6%	12%	61%	20%
McCormick Forest Park	Invite	n=236	4%	8%	15%	36%	36%
	Open	n=567	4%	7%	11%	50%	28%
Tacoma DeMolay (Bella Bella) Sandspit	Invite	n=234	3%	9%	6%	38%	43%
	Open	n=566	2%	9%	11%	41%	37%
Sunrise Beach Park	Invite	n=236	3%	3%	6%	47%	41%
	Open	n=568	1%	5%	8%	55%	32%
Harbor Family Park	Invite	n=227	2%	3%	6%	40%	48%
	Open	n=559	3%	7%	8%	38%	43%
Rosedale Park	Invite	n=229	2%	6%	8%	33%	51%
	Open	n=556	2%	2%	5%	43%	48%
Rotary Bark Park (within McCormick Forest Park)	Invite	n=229	5%	3%	6%	25%	61%
	Open	n=556	3%	6%	5%	25%	60%
Fox Island Fishing Pier Park	Invite	n=241	1%	4%	3%	36%	56%
	Open	n=571	1%	3%	4%	35%	56%
Madrona Links Golf Course	Invite	n=230	5%	4%	4%	33%	54%
	Open	n=562	1%	3%	4%	26%	67%
Arletta Schoolhouse (within Hales Pass Park)	Invite	n=234	2%	1%	1%	29%	67%
	Open	n=566	4%	3%	3%	27%	63%
Rosedale Community Hall	Invite	n=225	2%	1%	1%	28%	68%
	Open	n=549	1%	1%	4%	36%	58%
Cedrona Boat Launch on Fox Island	Invite	n=230	2%	4%	2%	28%	64%
	Open	n=559	1%	3%	4%	27%	66%
Kopachuck Heights Open Space	Invite	n=226		1%	3%	18%	78%
	Open	n=553	0%	2%	5%	26%	67%
Hales Pass Park	Invite	n=228	1%	2%	1%	27%	70%
	Open	n=553	2%	2%	2%	28%	67%
Tubby's Trail Dog Park	Invite	n=228	1%	5%	2%	19%	72%
	Open	n=557	1%	2%	3%	12%	82%
Wollochet Bay Estuary Park	Invite	n=225	2%	2%	2%	19%	77%
	Open	n=553	0%	1%	2%	19%	78%
Maplewood Open Space	Invite	n=224	1%	1%	2%	7%	90%
	Open	n=544	1%	1%	1%	8%	90%
(Optional) Other: (specify)	Invite	n=22	10%	4%	4%		81%
	Open	n=117	18%	18%	5%	7%	52%

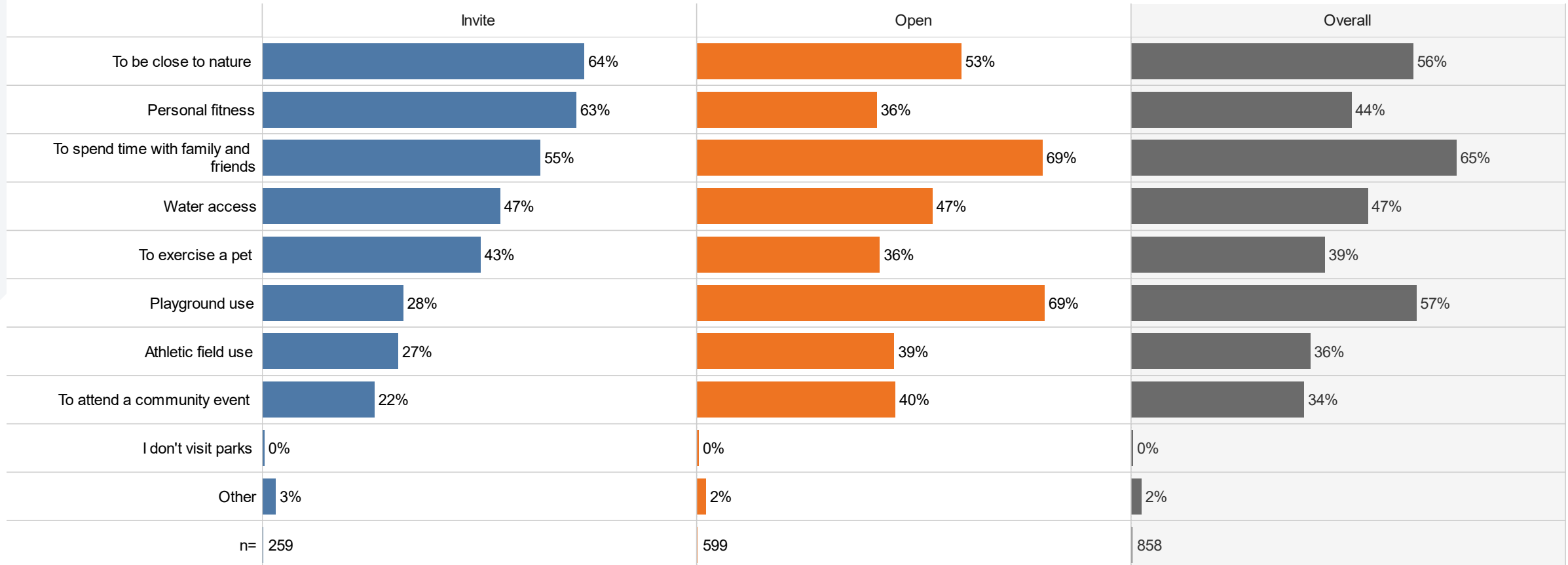
- Sehmel Homestead Park and Cushman Powerline Trail are the most frequently used parks by both samples.
- Most parks are visited a few times a year.

Source: RRC

# Reasons for Visiting PenMet Parks' Sites

The main reasons the Invite sample visits a PenMet Parks' site is to be close to nature, for personal fitness and to spend time with family and friends. The Open link sample is much more likely to visit a PenMet Park for playground use.

What are the main reasons you visited a PenMet Parks' site in the LAST YEAR? (Check all that apply)

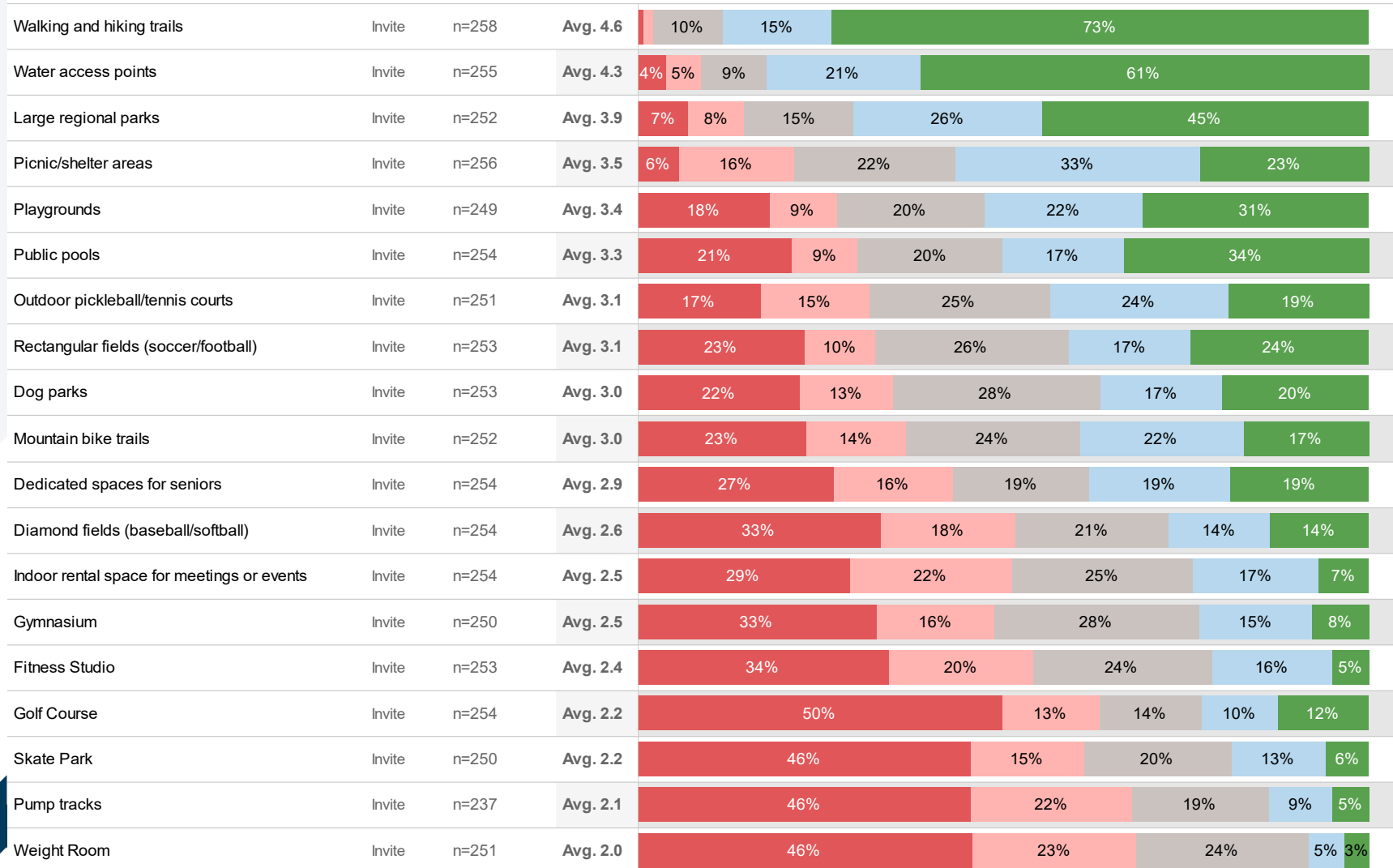


Source: RRC

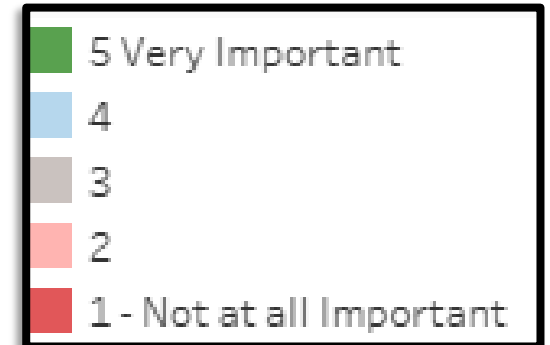
# Importance: Amenities By Invite Sample

Please rate how important the following facilities and amenities are to your household. Please provide an answer whether or not you have used the facility type or amenity.

Invite Sample



- Walking and hiking trails were rated as the most important amenity, with nearly three-quarters saying it was “very important.”
- Water access and large regional parks are also highly important to the Invite sample.



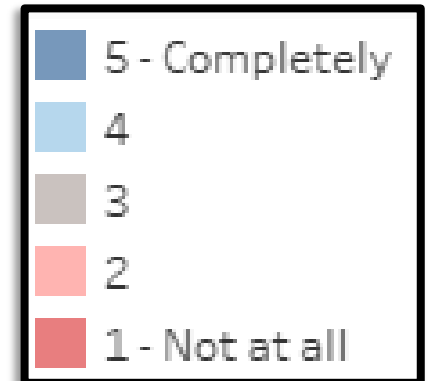
# Needs Being Met: Amenities By Invite Sample

Please rate how you think PenMet Parks and other local service providers are currently meeting the needs of the community. Please provide an answer whether or not you have used the facility type or amenity.

Invite Sample

Amenity	n	Avg.	1	2	3	4	5
Golf Course	n=157	Avg. 3.9	4%	11%	22%	19%	44%
Diamond fields (baseball/softball)	n=179	Avg. 3.7	8%	10%	20%	27%	35%
Playgrounds	n=202	Avg. 3.7	12%	24%	41%	21%	
Dog parks	n=185	Avg. 3.7	15%	25%	33%	26%	
Walking and hiking trails	n=230	Avg. 3.6	13%	26%	39%	20%	
Large regional parks	n=202	Avg. 3.5	8%	9%	30%	31%	22%
Rectangular fields (soccer/football)	n=184	Avg. 3.4	7%	19%	25%	19%	29%
Picnic/shelter areas	n=207	Avg. 3.4	17%	37%	33%	12%	
Water access points	n=195	Avg. 3.2	8%	22%	28%	27%	15%
Outdoor pickleball/tennis courts	n=174	Avg. 3.2	9%	21%	31%	21%	18%
Indoor rental space for meetings or events	n=155	Avg. 3.2	7%	24%	29%	25%	15%
Skate Park	n=135	Avg. 3.1	9%	24%	32%	21%	15%
Mountain bike trails	n=149	Avg. 3.0	8%	26%	39%	18%	9%
Dedicated spaces for seniors	n=137	Avg. 2.7	20%	28%	25%	21%	7%
Fitness Studio	n=99	Avg. 2.6	21%	28%	31%	10%	11%
Gymnasium	n=109	Avg. 2.5	31%	20%	28%	12%	9%
Pump tracks	n=82	Avg. 2.4	32%	23%	31%	4%	10%
Weight Room	n=83	Avg. 2.2	46%	18%	21%	6%	10%
Public pools	n=166	Avg. 1.7	63%	18%	11%	6%	

- Invite respondents are most satisfied with the golf course, diamond fields, playgrounds and dog parks.
- Public pools, weight rooms and pump tracks are meeting the needs of the community the least.



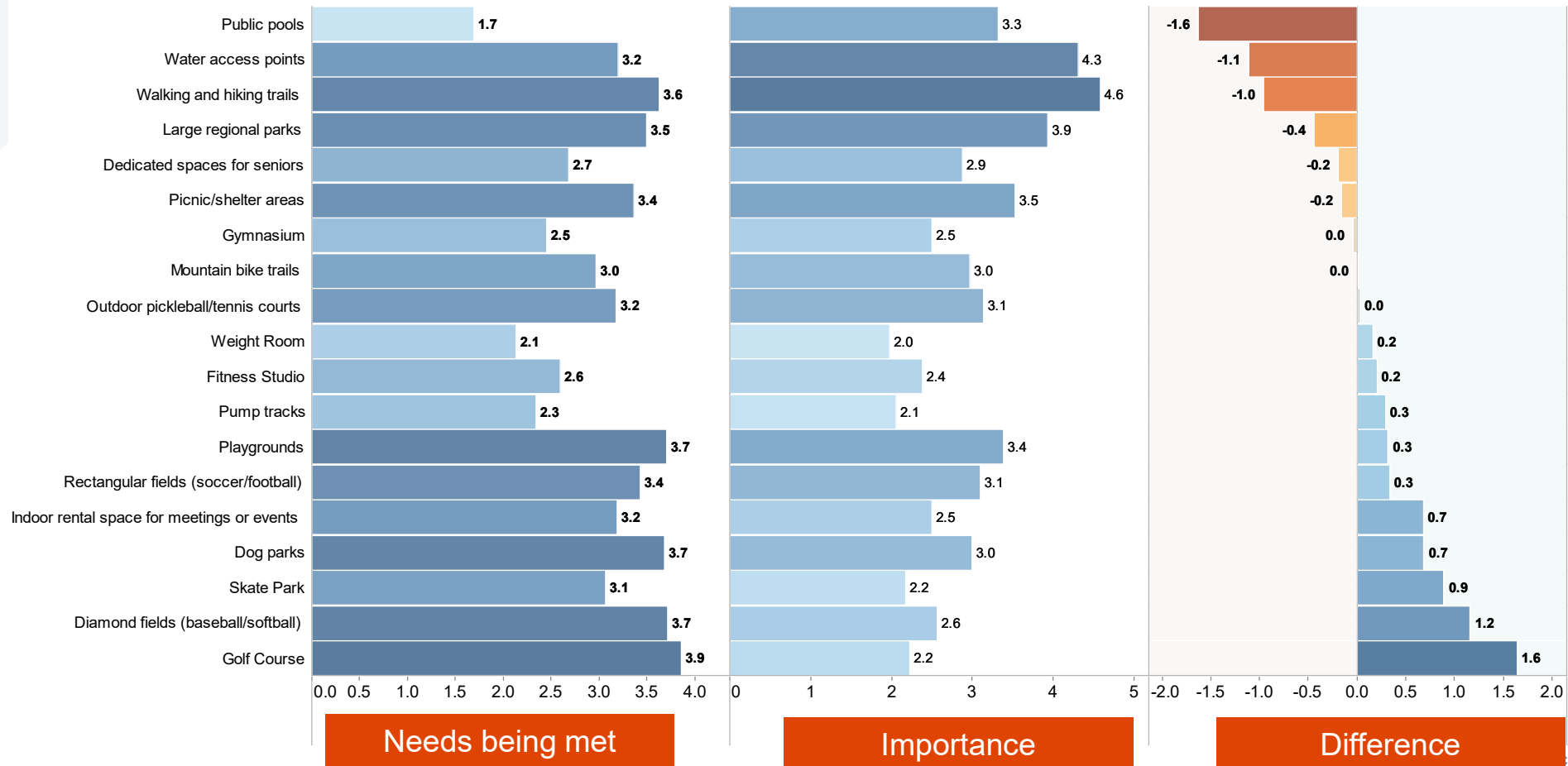
Invite Sample  
Source: RRC



# Importance/Needs Being Met: By Invite Sample

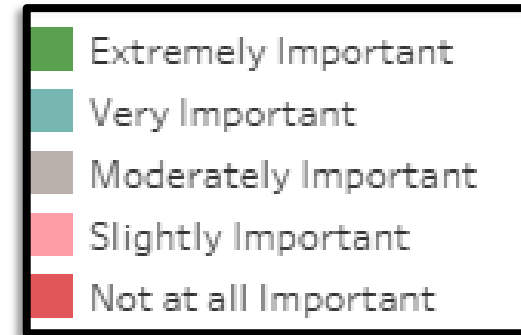
Below is a graph which highlights the difference between the average ratings of needs being met and the average ratings of importance for the Invite sample. The categories with the greatest difference between importance and satisfaction include public pools, water access points, walking and hiking trails, and large regional parks.

Invite Sample



# Importance of PenMet Properties

Preserving scenic views and vistas is the top priority for PenMet Parks' open space for both samples. Providing interpretive programs received little support (21% of the Invite sample said it is "not at all important").



Overall, how would you rate the importance of the following regarding PenMet open space properties?  
All Sample

Property	Sample	n	Avg.	Not at all Important	Slightly Important	Moderately Important	Very Important	Extremely Important
To preserve scenic views and vistas	Invite	n=244	Avg. 4.1	9%	0%	16%	31%	43%
	Open	n=538	Avg. 3.9	9%	0%	20%	39%	31%
To provide passive recreation opportunities	Invite	n=244	Avg. 3.9	7%	0%	25%	37%	29%
	Open	n=534	Avg. 3.7	9%	0%	30%	38%	21%
To preserve endangered species and habitat	Invite	n=245	Avg. 3.7	8%	11%	19%	30%	33%
	Open	n=537	Avg. 3.8	10%	0%	25%	34%	29%
To provide interpretive programs	Invite	n=243	Avg. 2.6	21%	26%	31%	15%	7%
	Open	n=528	Avg. 2.7	16%	28%	39%	11%	6%

All Sample  
Source: RRC



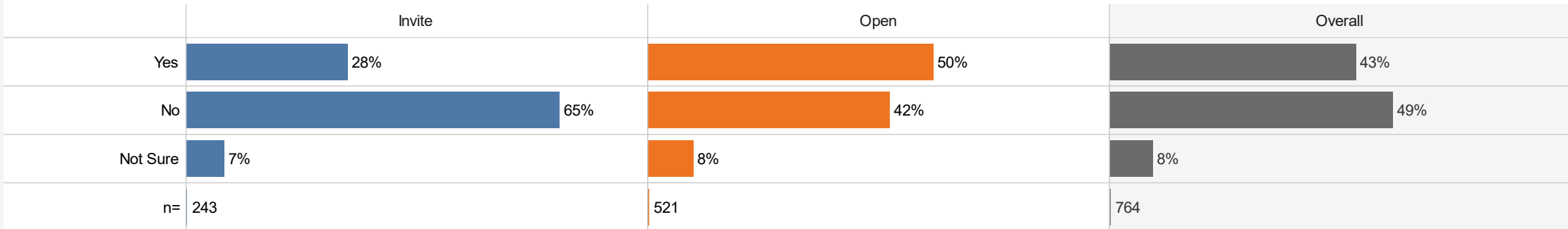
# Providing Innovative Experiences



# Program Participation and Number of Programs

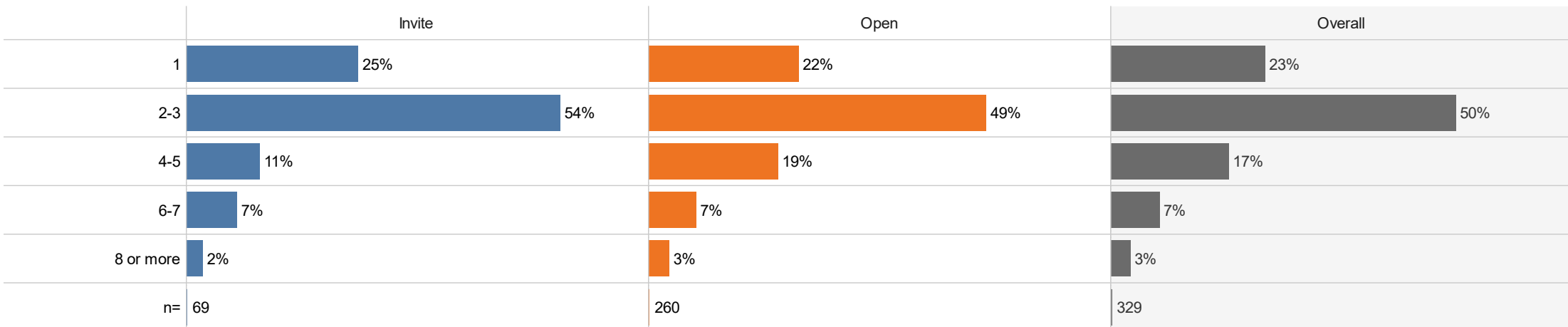
Majority of the Invite sample has not participated in any PenMet Parks' led programs during the last 12 months (68%). Of those who have participated (28%), over half have participated in 2-3 over the last 12 months. The Open link sample is more likely to have participated in PenMet Parks' led programs.

Have you or other members of your household participated in any PenMet Parks' led programs during the past 12 months?



Source: RRC

Approximately how many different programs offered by PenMet Parks have you or members of your household participated in over the last 12 months?

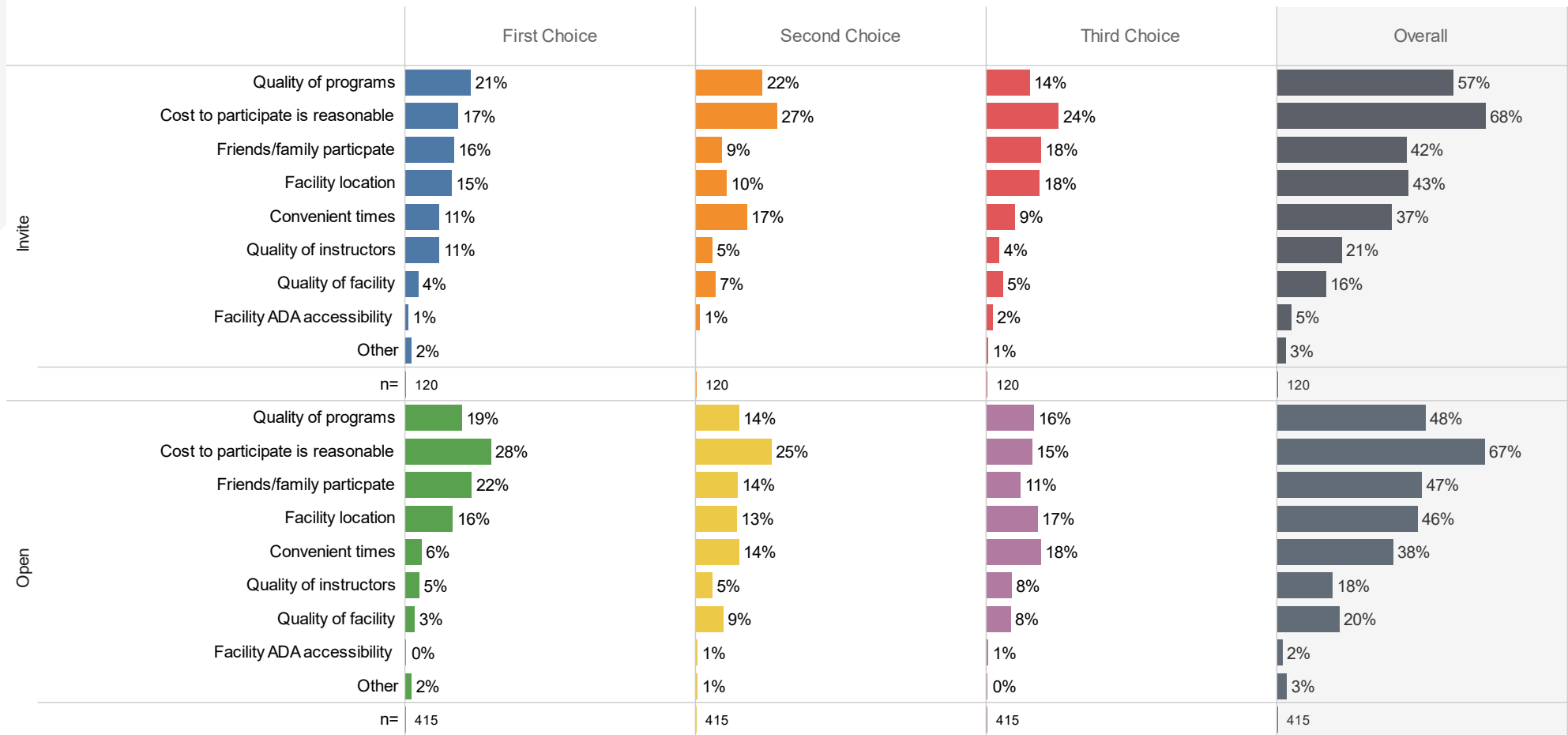


Source: RRC

# Top 3 Reasons for Program Use

Reasonable cost to participate in programs and the quality of the programs are the main reasons why respondents have participated in PenMet Parks' programs. Having friends/family participate, the facility location and convenient times are also important to both samples.

Please select the TOP THREE primary reasons your household participates in PenMet Parks' programs.

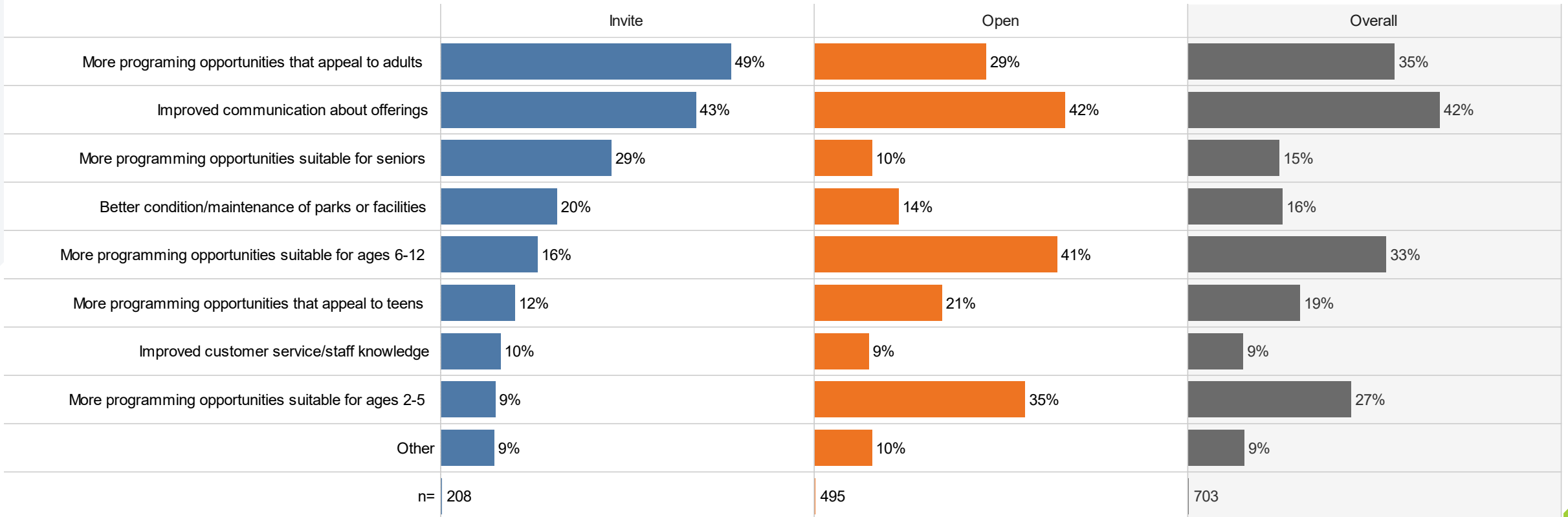


All Sample Source: RRC

## Increasing Use of Programs

About half of the Invite sample (49%) feels that more programming opportunities that appeal to adults would increase their use of PenMet Parks' programs. The Open link feels stronger towards additional programming opportunities for children 12 and younger.

What will increase your household's use of PenMet Parks' programs? (CHECK ALL THAT APPLY)



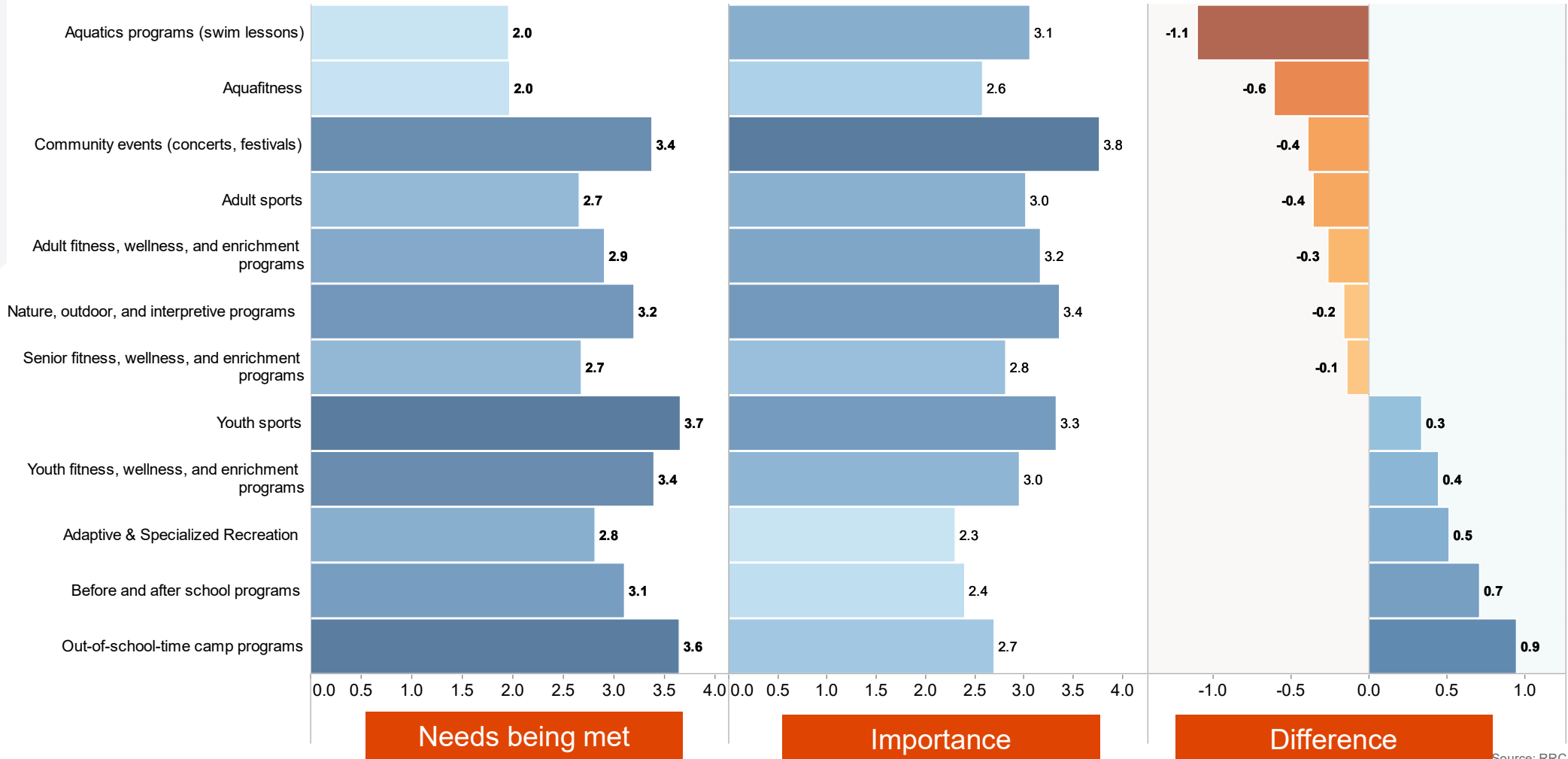
Source: RRC



# Programs: Needs Being Met/Importance by Invite Sample

The programs with the greatest difference between importance and meeting the needs of the community are aquatics programs and aquafitness for the Invite sample followed by community events and adult sports.

Invite Sample



Source: RRC



# Serving Everyone in Our Community



# Effectiveness of Communication

Overall, the communication from PenMet Parks is seen as somewhat effective, with an average rating overall of 3 on a scale of 1-5 with 5 being “very effective.”

How effective is PenMet Parks at reaching you with information on parks and recreation facilities, programs, and services?

	Invite	Open	Overall
1 - Not at all Effective	7%	10%	9%
2	23%	23%	23%
3	33%	37%	36%
4	23%	19%	21%
5 - Very Effective	13%	11%	12%
Avg.	3.1	3.0	3.0
n=	219	454	673

Source: RRC



## Current Communication Methods

The PenMet Parks and recreation guide is a popular source of communication for both samples. Nearly a quarter (26%) of both samples also report using the PenMet Parks website. The Open link sample accesses communication via PenMet social media more frequently.

How do you currently receive information on parks and recreation facilities, programs, and services offered by PenMet Parks? (CHECK ALL THAT APPLY)

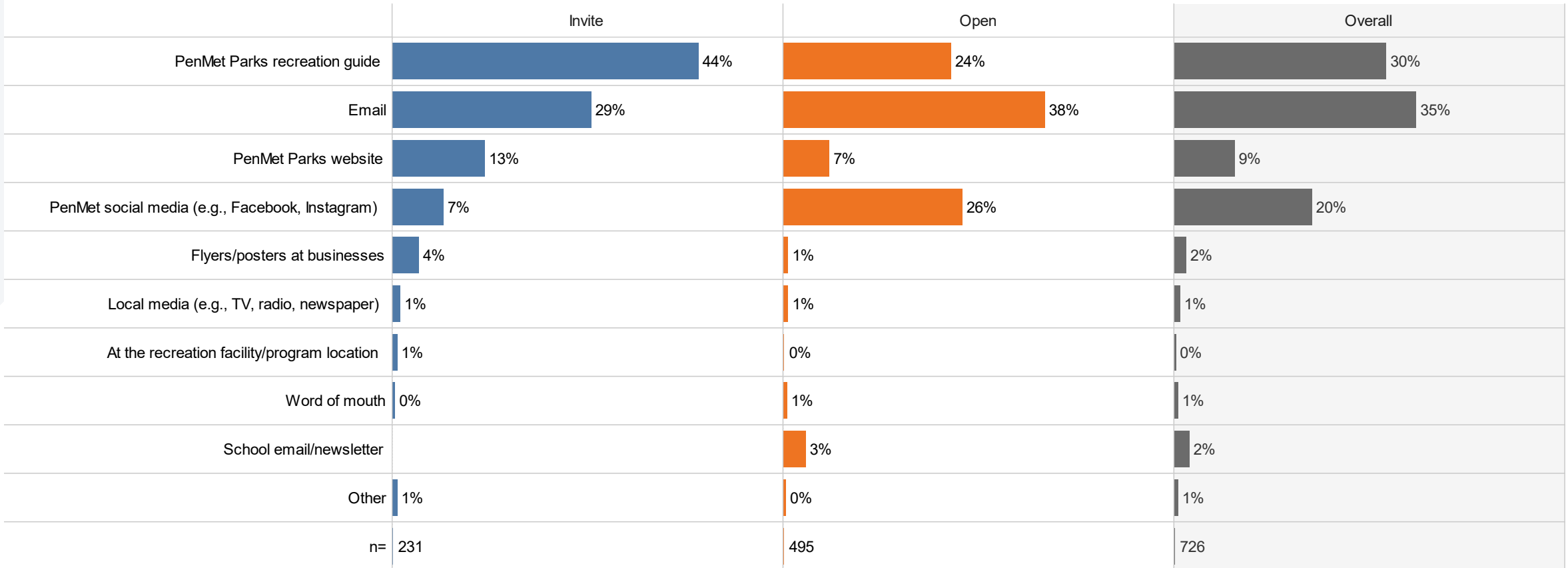
	Invite	Open	Overall
PenMet Parks recreation guide	67%	44%	51%
Word of mouth	34%	47%	43%
PenMet Parks website	26%	26%	26%
Flyers/posters at businesses	23%	14%	17%
Email	19%	28%	25%
PenMet social media (e.g., Facebook, Instagram)	14%	41%	33%
At the recreation facility/program location	9%	9%	9%
Local media (e.g., TV, radio, newspaper)	7%	4%	5%
School email/newsletter	5%	12%	10%
Other	7%	2%	4%
n=	232	494	726

Source: RRC

# Preferred Communication

The PenMet Parks recreation guide is the preferred method of communication for the Invite sample followed by email. The Open link sample prefers email followed by social media.

What is the preferred way for you to receive information on parks and recreation facilities, programs, and services?



Source: RRC



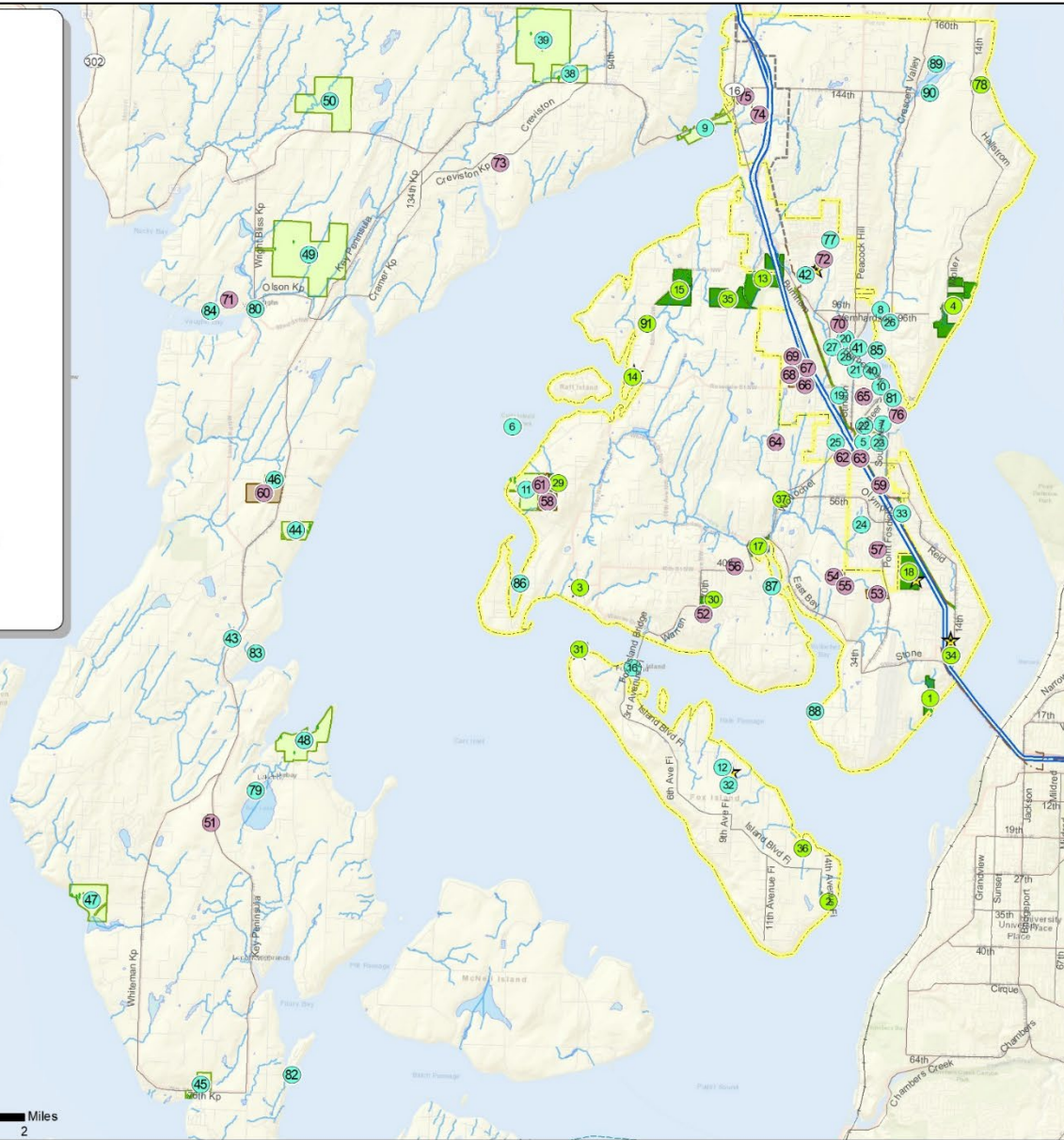


## Park and Facility: Inventory and Scoring

# PenMet Parks & Other Providers System Map

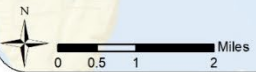
## Legend

- Location Label**
- PenMet Park / Location
  - Other Provider Park / Location
  - School / Church
  - ★ Indoor Facilities
  - Components
  - Trail - Existing
  - - - Trail - Proposed
  - Limited Access
  - Highway
  - Major Road
  - Other Road / Street
  - Ramp
  - Ferry
  - River/Stream
  - PenMet Park District
  - Other Provider
  - School / Church
  - Water Body
  - PenMet District Boundary



## Park / Location Labels

- |  |                                     |   |                                   |
|--|-------------------------------------|---|-----------------------------------|
| 1 Narrows Park                               | 25 Adam Tallman Park                | 50 Rocky Creek Conservation Area              | 70 Harbor Ridge Middle School     |
| 2 Fox Island Fishing Pier                    | 26 BMX Park                         | 51 Evergreen Elementary School Lakebay        | 71 Vaughn Elementary School       |
| 3 Hales Pass Park                            | 27 Donkey Creek Park                | 52 Gig Harbor Academy                         | 72 Swift Water Elementary School  |
| 4 Sunrise Beach Park                         | 28 Austin Estuary Park              | 53 Lighthouse Christian School Harbor Heights | 73 Minter Creek Elementary School |
| 5 Cushman Powerline Trail                    | 29 Kopachuck Heights                | 54 Harbor Family Park                         | 74 Purdy Elementary School        |
| 6 Cutt Island State Park                     | 30 Harbor Family Park               | 55 Goodman Middle School                      | 75 Peninsula High School          |
| 7 Grandview Forest Park                      | 31 Demolay Sandspit Nature Preserve | 56 Artondale Elementary School                | 76 Old Ferry Landing              |
| 8 City Park at Crescent Creek                | 32 Fox Island Nature Center         | 57 Hosanna Christian School                   | 77 Shaw Park                      |
| 9 Purdy Sand Spit                            | 33 Cushman Trailhead Park           | 58 Kopachuck Middle School                    | 78 Maplewood                      |
| 10 Jerisich Dock & Skansie Brothers Park     | 34 Tubby's Trail Dog Park           | 59 Community Transition Program and PIA       | 79 Bay Lake Public Fishing        |
| 11 Kopachuck State Park                      | 35 Rotary Bark Park                 | 60 Key Peninsula Middle School                | 80 Key Peninsula Civic Center     |
| 12 Nichols Community Center                  | 36 Cedrona Bay Boat Launch          | 61 Voyager Elementary School                  | 81 Sound View Forest              |
| 13 McCormick Forest Park                     | 37 Peninsula Gardens                | 62 Tacoma Community College Gig Harbor Campus | 82 Longbranch Boat Launch         |
| 14 Rosedale Park                             | 38 Gateway Park                     | 63 Harbor Christian Schools                   | 83 Home Boat Launch               |
| 15 Sehmel Homestead Park                     | 39 360 Trails                       | 64 Harbor Montessori School                   | 84 Vaughn Boat Launch             |
| 16 Toehead Island Boat Launch                | 40 Ancich Waterfront Park           | 65 St Nicholas Catholic School                | 85 Randall Boat Launch            |
| 17 Wollochet Bay Estuary                     | 41 Bogue Viewing Platform           | 66 Discovery Elementary School                | 86 Horsehead Boat Launch          |
| 18 Madrona Links Golf Course                 | 42 Gig Harbor Little League Fields  | 67 The Academies at Henderson Bay             | 87 Wollochet Boat Launch          |
| 19 Wilkinson Farm Park                       | 43 Home Park                        | 68 Gig Harbor High School                     | 88 Point Fosdick Boat Launch      |
| 20 Finholm View Climb                        | 44 Maple Hollow Park                | 69 Pioneer Elementary School                  | 89 Crescent Lake Boat Launch      |
| 21 Eddon Boat Park                           | 45 Taylor Bay                       |   | 90 Crescent Lake Park             |
| 22 Civic Center Green                        | 46 Volunteer Park                   |   | 91 Peters Pond                    |
| 23 Skate Park                                | 47 Joemma Beach State Park          |   |                                   |
| 24 Kenneth Leo Marvin Veterans Memorial Park | 48 Penrose Point State Park         |   |                                   |
|  | 49 Key Central Forest               |   |                                   |





## General Observations

- Sehmel Homestead Park and the renovation of Arletta Schoolhouse are key highlights
- Good use of interpretation signs throughout the system
- ADA access is limited at some parks
- Lots of portable restrooms throughout the system
- Opportunities to add formal trailheads and water access



# Mapping Location and Quality of Components



## Sehmel Homestead Park

Address: **10123 78TH AVE NW, Gig Harbor**  
 GIS Acres: **97.20**  
 Owner: **Peninsula Metropolitan**  
 Classification: **Local**  
 Inventory Date:

### Park Overview

98 acre site with expansive meadow, natural pond, forest, and wetlands, along with rectangle and diamond fields, sport courts, playground, picnic, garden, ammpitheatre, and large event pavilion.

### Park Cumulative Score

<b>252</b>	<b>142</b>
GRASP® Community Score	GRASP® Neighborhood Score

### Comfort and Convenience Scores:

<b>3</b> -Design and Ambiance	<b>2</b> -Trail Connection	<b>2</b> -Dog Pick-Up Station
<b>2</b> -Park Access	<b>2</b> -Seating	<b>2</b> -Seasonal Plantings
<b>2</b> -Parking	<b>2</b> -Picnic Tables	<b>2</b> -Shade
<b>2</b> -Restrooms	<b>0</b> -BBQ Grills	<b>3</b> -Ornamental Plantings
		<b>2</b> -Bike Parking
		<b>2</b> -Drinking Fountains
		<b>2</b> -Security Lighting



Components:	MAP ID	N Score	C Score	Qty	Lights	Observation
Basketball Court	C101	2	2	1		
Concessions	C106	0	2	1		
Diamond Field	C105	3	3	1		Softball fields, astroturf infields, no lights. Best in district
Diamond Field	C104	3	3	1		Baseball with astroturf infield and no lights. Best in district
Event Space	C097	2	2	1		Outdoor performing arts amphitheater
Fitness Course	C253	2	2	1		With multiple parts at diamonds and playground
Garden, Display	C108	2	2	2		Heritage and Master Display Gardens with small shed with shade and greenhouse, and the forested trails to the South with arboretum educational signage
Loop Walk	C109	2	2	1		Paved Boundless-Softball loop
Loop Walk	C098	2	2	1		Sehmel Perimeter Loop
Natural Area	C099	2	2	1		
PARCEL	L015	2	2	1		
Pickleball, Overlay	C318	2	2	12		On tennis and basketball courts
Playground, Destination	C103	2	2	1		
Rectangular Field, Large	C100	3	3	1	Y	Best in district. Synthetic turf, lighted and fenced, with small bleachers
Tennis Court	C102	2	2	2		
Trail, Multi-use	C110	2	2	1		walking biking paved trails throughout park
Water, Open	C107	2	2	1		Pond

# Component Database

Park / Location	Component	Map ID	Quantity	Neighborhood	Community Scc	Observations / Comments
Rosedale Park	Playground, Local	C255	1	2	2	Small set
Sehmel Homestead Park	Playground, Destination	C103	1	2	2	
Artondale Elementary School	Playground, Local	C264	1	2	2	
Discovery Elementary School	Playground, Local	C189	1	1	1	Minimal
Evergreen Elementary School Lakebay	Playground, Local	C274	1	2	2	
Gig Harbor Academy	Playground, Local	C191	1	1	1	Minimal
Harbor Heights Elementary School	Playground, Local	C202	1	2	2	
Lighthouse Christian School	Playground, Local	C216	1	2	2	
Minter Creek Elementary School	Playground, Local	C220	1	2	2	
Pioneer Elementary School	Playground, Local	C290	1	2	2	
Purdy Elementary School	Playground, Local	C230	1	2	2	
St Nicholas Catholic School	Playground, Local	C231	1	2	2	
The Academies at Henderson Bay	Playground, Local	C237	1	1	1	Minimal
Vaughn Elementary School	Playground, Local	C240	1	2	2	
Voyager Elementary School	Playground, Local	C245	1	2	2	
City Park at Crescent Creek	Playground, Local	C013	1	2	2	More modern set on PIP
Gateway Park	Playground, Local	C135	1	2	2	
Home Park	Playground, Local	C150	1	1	1	Minimal
Kenneth Leo Marvin Veterans Memorial Park	Playground, Local	C062	1	3	3	Newer set on PIP with musical play features
Key Peninsula Civic Center	Playground, Local	C279	1	2	2	
Nichols Community Center	Playground, Local	C081	1	1	1	Aging components
Skate Park	Playground, Local	C112	1	2	2	Minimal set with small climbing wall
Volunteer Park	Playground, Local	C163	1	2	2	



# Inventory Summary

Park or Location	Acres	Components
Cedrona Bay Boat Launch	0.3	2
Demolay Sandspit Nature Preserve	11.1	4
Fox Island Fishing Pier	9.7	3
Hales Pass Park	4.0	6
Harbor Family Park	18.7	2
Kopachuck Heights	18.4	1
Madrona Links Golf Course	91.4	2
Maplewood	36.0	2
McCormick Forest Park	109.7	4
Narrows Park	34.3	4
Peninsula Gardens	10.6	1
Peters Pond	0.9	1
Rosedale Park	2.7	7
Rotary Bark Park	94.9	3
Sehmel Homestead Park	97.0	29
Sunrise Beach Park	77.6	4
Tubbys Trail Dog Park	8.5	2
Wollochet Bay Estuary	21.5	3
Cushman Powerline Trail (14th Ave NW to Olympic Drive)	13.8	1

# Trails



## ▲ Cushman Trail

- 6.2 mile regional trail developed in cooperation with Pierce County and Tacoma Power Utility.
- Paved and ranges from 12-16 feet in width
- Trailheads @ Borgen Boulevard, Hollycroft Street, and Grandview Street.
- **PenMet Parks** has extended the trail south of Gig Harbor to 14th Avenue Northwest
  - And maintains a trailhead with parking at this location

## ▲ Parks with internal trails and loop walks:

- Sehmel Homestead Park
- Harbor Family Park
- McCormick Forest Park
- Rotary Bark Park

# Parks



## PenMet Parks

Park / Location	Neighborhood Score	Community Score
Sehmel Homestead Park	142	252
Rosedale Park	34	38
Narrows Park	36	36
Hales Pass Park	19	24
Sunrise Beach Park	24	24

## Other Service Providers

Jerisich Dock And Skansie Brothers Park	76	76
Gateway Park	55	65
Volunteer Park	53	62
City Park at Crescent Creek	53	58
Penrose Point State Park	38	48
Kenneth Leo Marvin Veterans Memorial Park	41	41
Nichols Community Center	36	36
Joemma Beach State Park	34	34
Kopachuck State Park	34	34
Wilkinson Farm Park	34	34
Gig Harbor Little League Fields	12	31
Maple Hollow Park	29	29
Donkey Creek Park	26	26
Key Peninsula Civic Center	22	26
Adam Tallman Park	22	22
Cushman Powerline Trail	19	19
360 Trails	17	17
Civic Center Green	14	14
Cushman Trailhead Park	14	14
Cutt Island State Park	13	13
Home Park	8	8
Shaw Park	7	7
Ancich Waterfront Park	4	4
Crescent Lake Park	4	4

## Special Use & Water Access



## PenMet Parks

Park / Location	Neighborhood Score	Community Score
Rotary Bark Park	19	19
Madrona Links Golf Course	14	14
Tubbys Trail Dog Park	7	7
Peninsula Gardens	2	4
Fox Island Fishing Pier	19	19
Cedrona Bay Boat Launch	7	7

## Other Service Providers

Eddon Boat Park	34	34
Bogue Viewing Platform	22	22
Finholm View Climb	10	19
Old Ferry Landing	19	19
Skate Park	19	19
BMX Park	6	8
Home Boat Launch	18	18
Longbranch Boat Launch	13	13
Randall Boat Launch	13	13
Vaughn Boat Launch	13	13
Purdy Sand Spit	8	8
Toehead Island Boat Launch	8	8
Bay Lake Public Fishing	7	7
Crescent Lake Boat Launch	7	7
Horsehead Boat Launch	7	7
Point Fosdick Boat Launch	7	7
Wollochet Boat Launch	7	7

## Natural Resource Areas



## PenMet Parks

Park / Location	Neighborhood Score	Community Score
Demolay Sandspit Nature Preserve	24	24
McCormick Forest Park	22	22
Wollochet Bay Estuary	8	8
Harbor Family Park	6	6

## Other Service Providers

Rocky Creek Conservation Area	13	13
Austin Estuary Park	11	11
Fox Island Nature Center	7	7
Key Central Forest	7	7
Sound View Forest	4	4

## Undeveloped Properties



## PenMet Parks

Park / Location	Neighborhood Score	Community Score
Maplewood	7	7
Kopachuck Heights	4	4
Peters Pond	4	4

## School District Properties



Park / Location	Neighborhood Score	Community Score
Gig Harbor High School	12	22
Artondale Elementary School	12	12
Peninsula High School	6	9
St Nicholas Catholic School	7	7
Vaughn Elementary School	6	7
Kopachuck Middle School	6	6
Swift Water Elementary School	6	6
Evergreen Elementary School Lakebay	6	6
Goodman Middle School	4	6
Harbor Ridge Middle School	6	6
Minter Creek Elementary School	6	6
Pioneer Elementary School	6	6
Voyager Elementary School	6	6
Purdy Elementary School	5	5
Harbor Heights Elementary School	4	4
Key Peninsula Middle School	4	4
Lighthouse Christian School	4	4
Discovery Elementary School	3	3
Gig Harbor Academy	3	3
The Academies at Henderson Bay	3	3
Harbor Christian Schools	2	2
Hosanna Christian School	2	2
Tacoma Community College Gig Harbor Campus	2	2
Community Transition Program and PIA	1	1
Harbor Montessori School	1	1



# Park and Facility: Comparisons, Benchmarks and System Analysis

- ▲ A Look at Distribution, Equity and Gaps

# NRPA 2023 NRPA Agency Performance Review

(With comparable population)

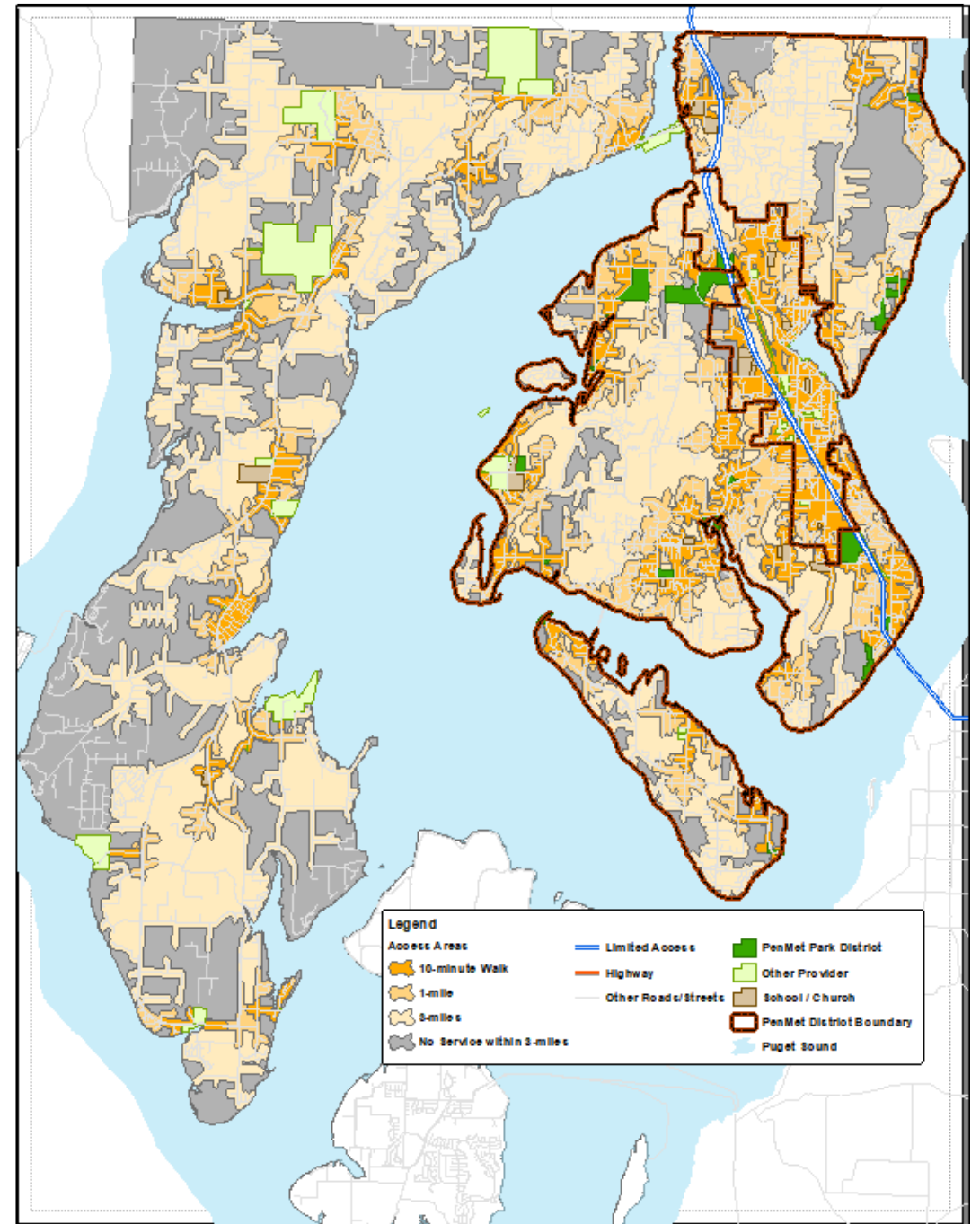
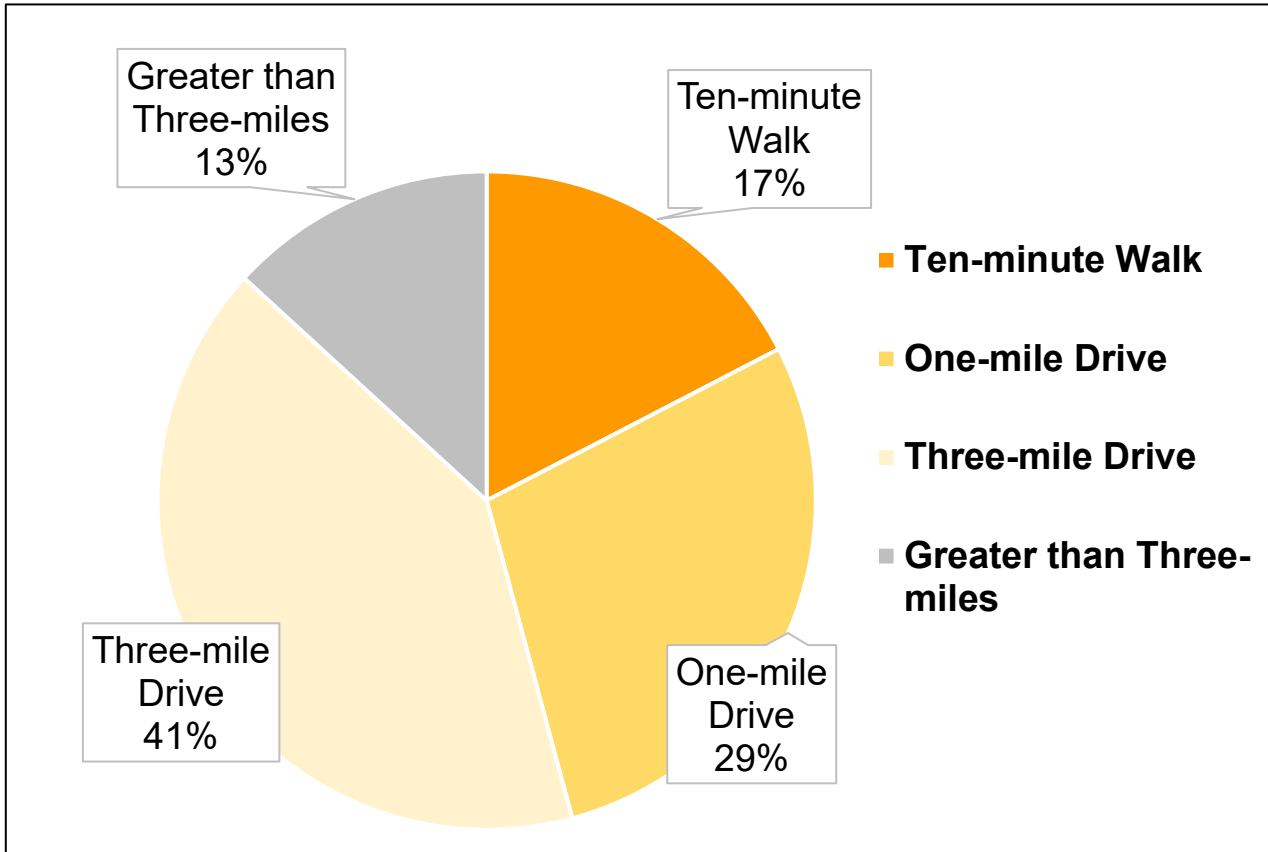
	Outdoor Facility	Agencies Offering this Facility	Median Number of Residents per Facility	PenMet Parks Current Quantity	PenMet Parks Residents per Facility	Need to add to meet NRPA median
Playgrounds	Playgrounds	95%	3,028	2	20,238	11
Courts	Basketball courts*	86	7,117	2	20,238	4
	Tennis courts	76	5,815	6	6,746	1
	Pickleball courts^	31	9,257	14	2,891	(10)
Diamond Fields	Diamond fields: baseball – youth	79	5,033	4	10,119	4
	Diamond fields: softball fields – adult	63	11,802			(1)
	Diamond fields: softball fields – youth	62	9,060			0
	Diamond fields: baseball – adult	55	19,556			(2)
Rectangular Fields	Rectangular fields: multipurpose	69	7,674	1	40,475	4
	Rectangular fields: soccer field – youth	50	4,947			7
	Rectangular fields: soccer field – adult	42	10,775			3
	Rectangular fields: football field	35	18,785			1
	Multipurpose synthetic fields	25	25,330	1	40,475	1
Dog parks	Dog parks	68	28,000	2	20,238	(1)
Skate parks	Skate parks	41	32,000	0	NA	1
Community gardens	Community gardens	52	26,741	0	NA	2
	<i>Comparison based on median for less than 20,000 to 49,999 population comparison</i>					
<i>Surplus</i>						
<i>Possible Deficit</i>						
* 1 full court and 1 half court						
^ All pickleball overlay on existing tennis courts and basketball						

# NRPA 2023 Park Metrics

	PenMet Parks	Total	2023 NPRA Median Acres per Capita
2023 All Acres		670	
2023 Developed Park Acres (does not include Undeveloped or Golf Course)		536	
Parks	215.4		
Natural Area	173.8		
Special Use	137		
Water Access	9.4		
Golf Course	79.7		
Undeveloped	54.7		
2020 Population	40,475		
2022 Developed Park Acres per 1,000 population	13.2		
2023 NPRA Median Acres per 1,000 population			11.3
2027 Population	41,120		
Acres needed to maintain current standard	544		
Acres to add (needed - current)	9		

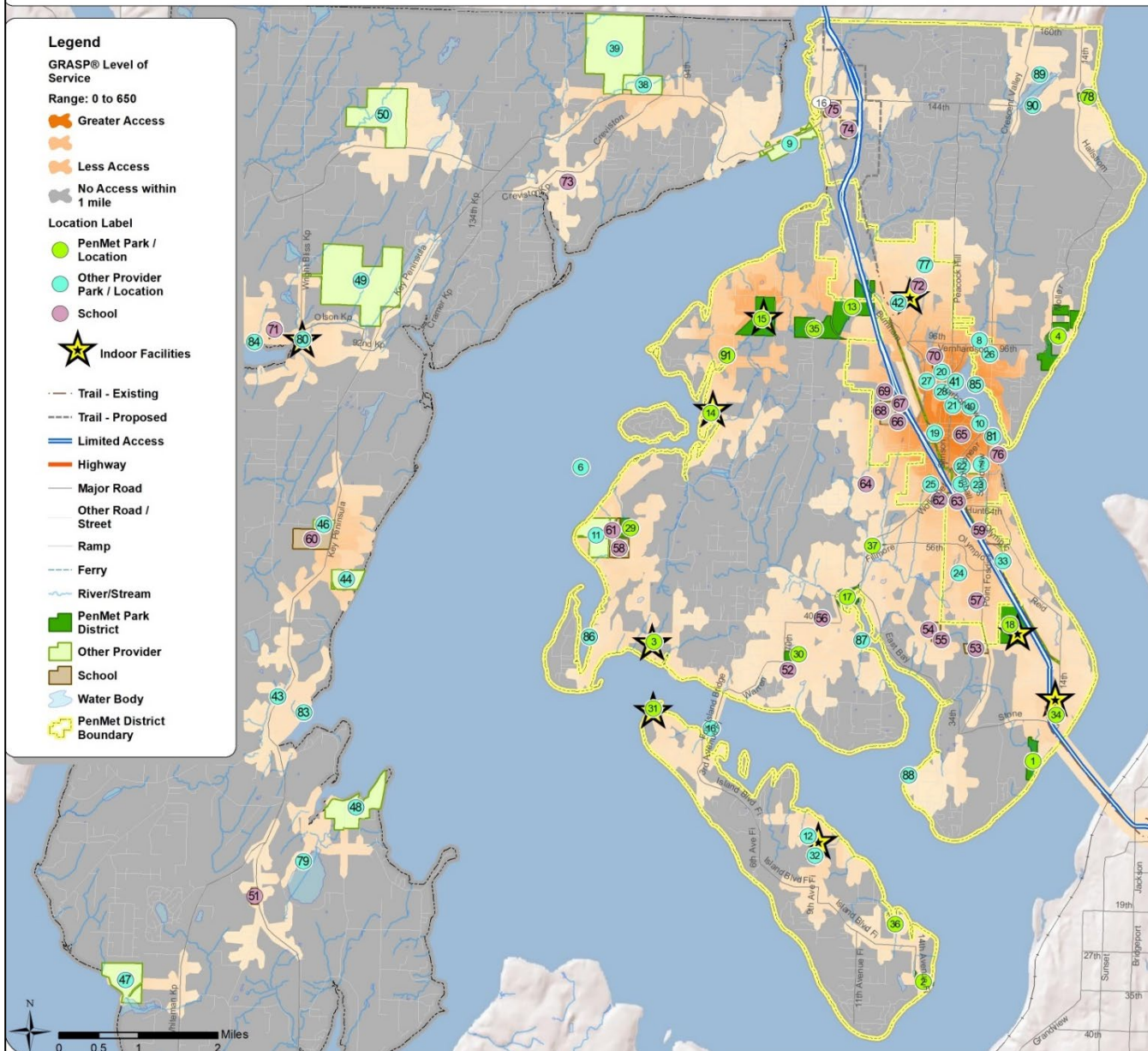
NRPA Comparisons	20,000 to 49,999	PenMet Parks
Residents Per Park	2,014	2,249
Acres of Park Land per 1,000 Residents	11.3	13.2

# Access Analysis



# GRASP® Analysis: Access to Outdoor Recreation Opportunities (1 Mile)

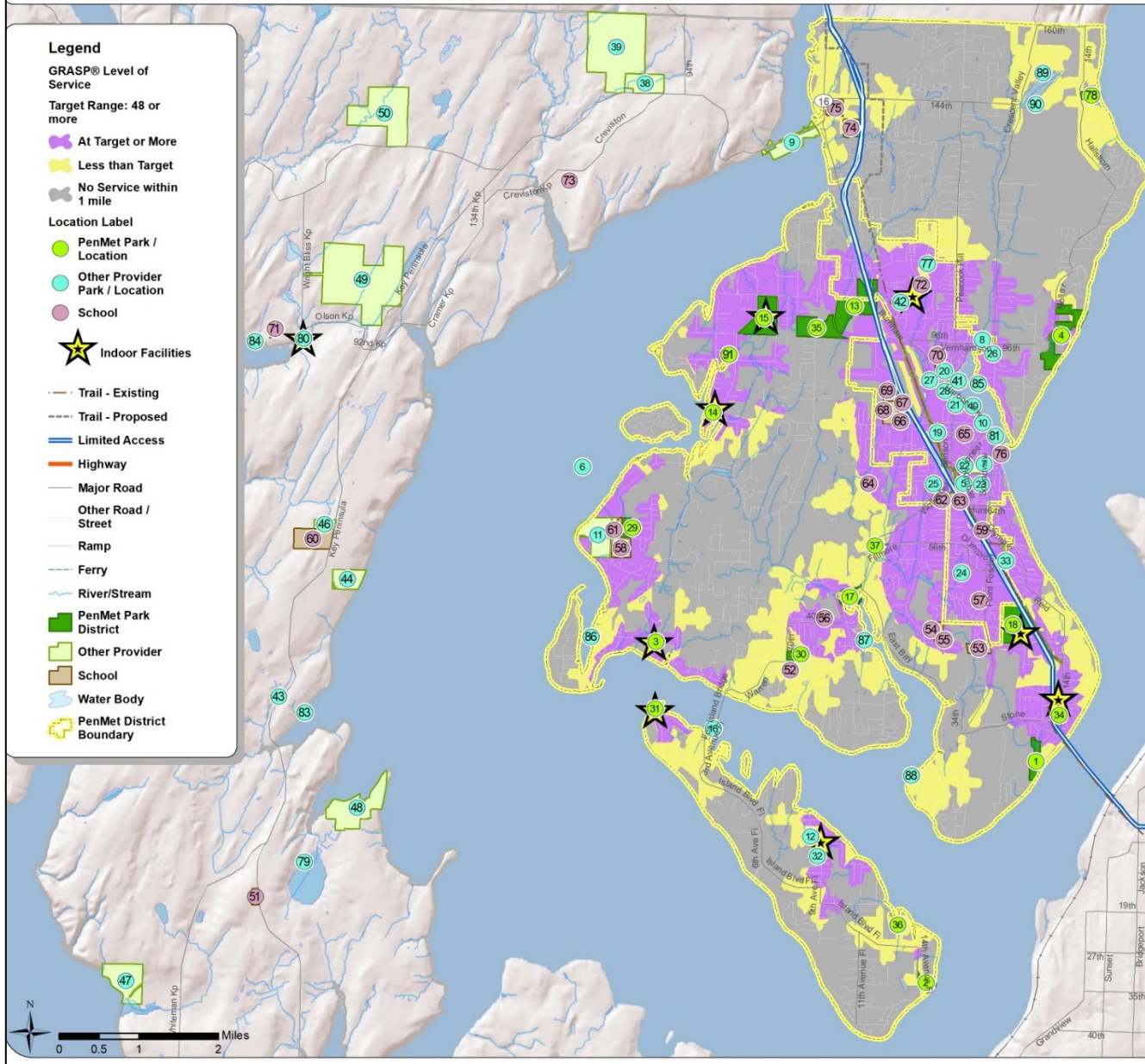
## PenMet Parks, Washington



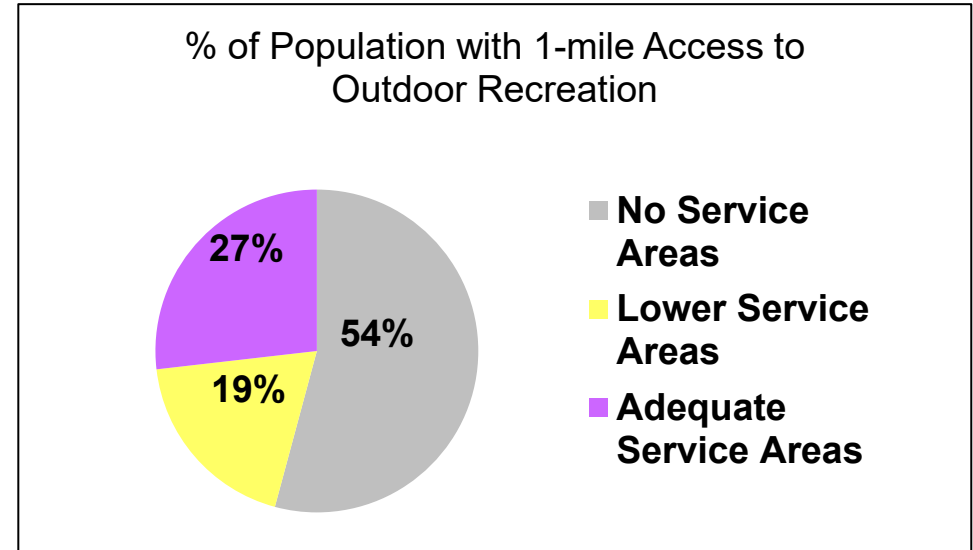
# One-mile Access to Outdoor Recreation

# GRASP® Gsp Analysis: Gaps in Access to Outdoor Recreation Opportunities (1 Mile)

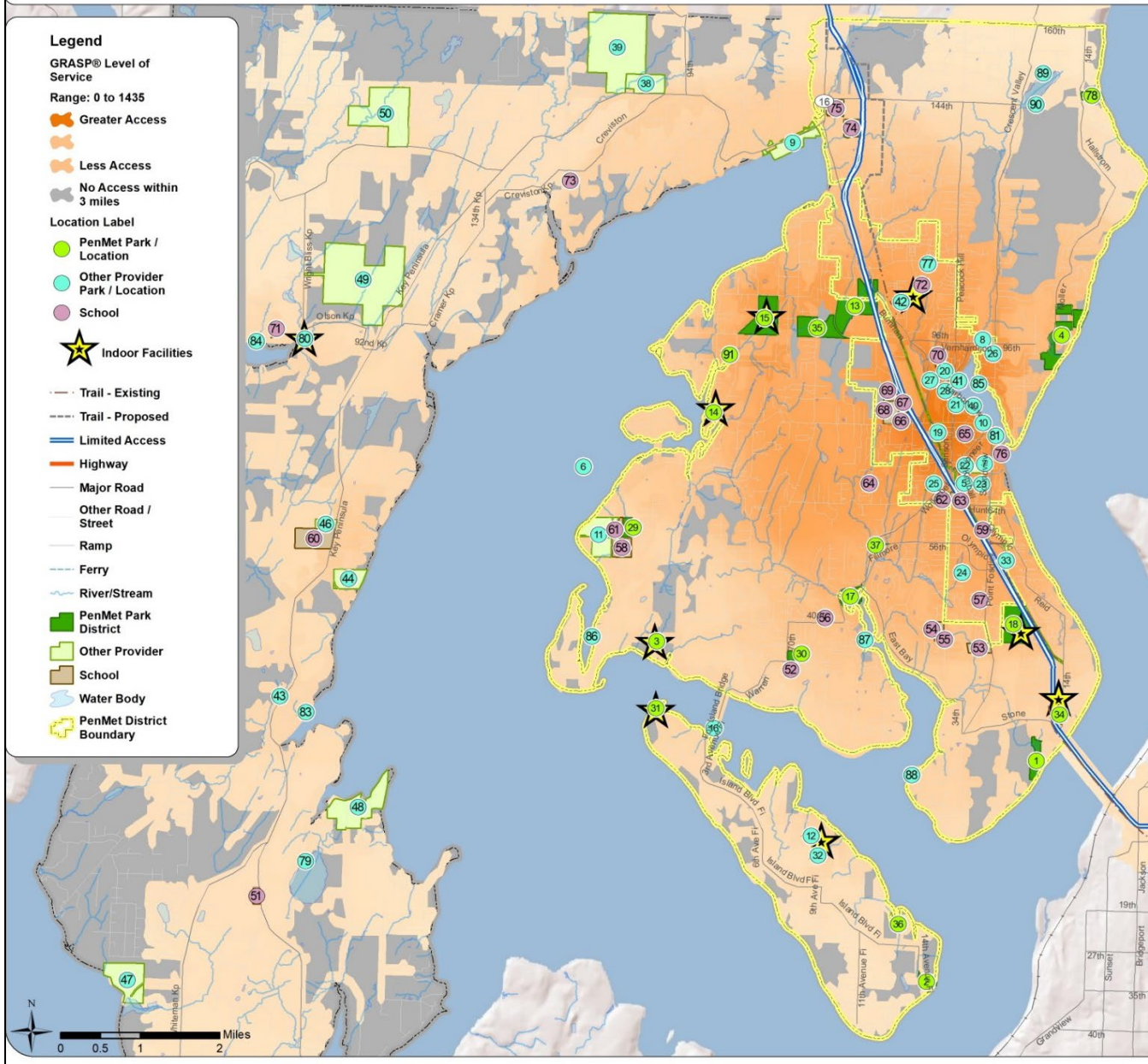
## PenMet Parks, Washington



## One-mile Access to Adequate Opportunities



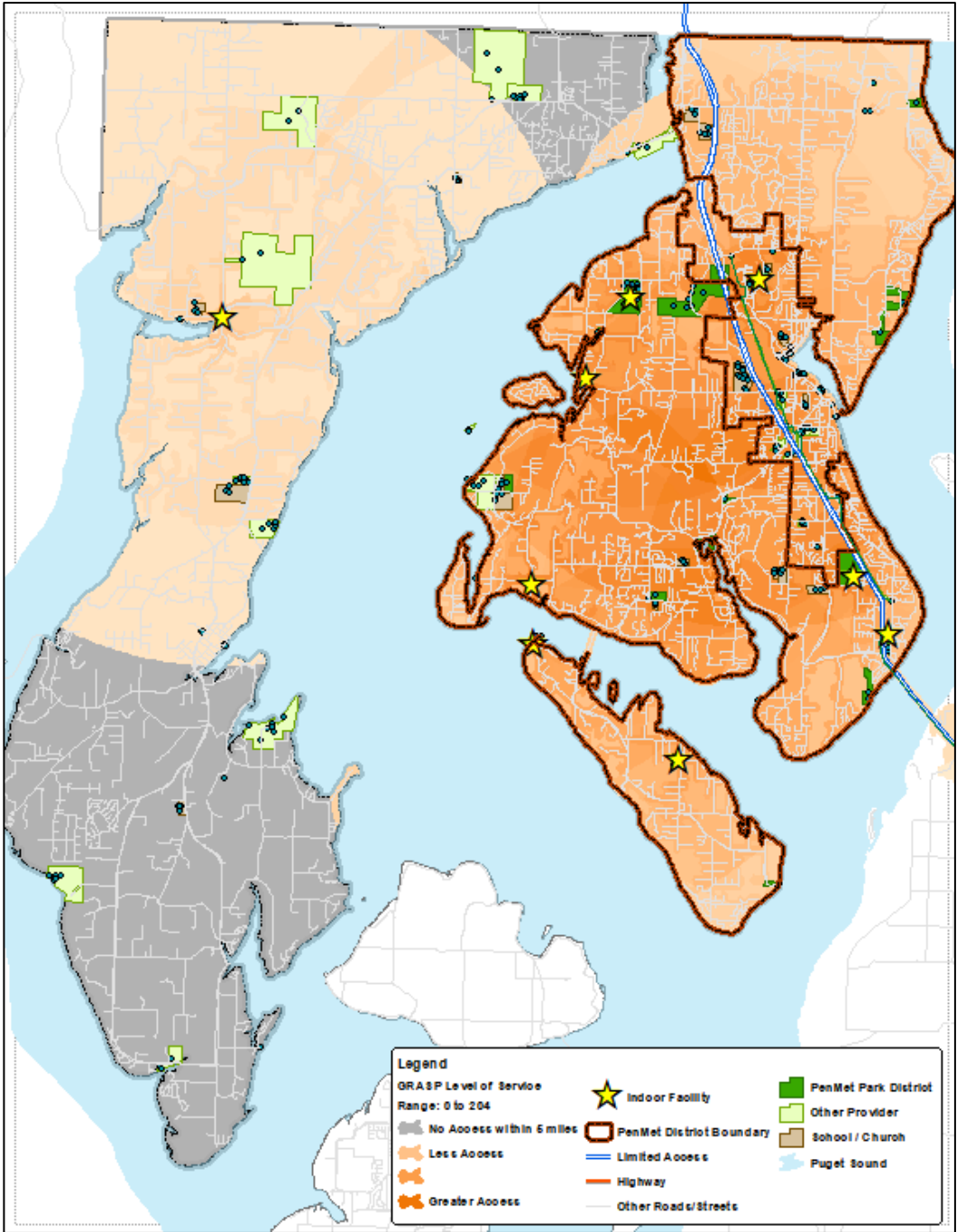
PenMet Parks, Washington



# Three-mile Access Analysis

# Access to Indoor Facilities Analysis

Community Recreation Center	Peninsula Metropolitan Park District
Demolay Bunkhouse	Peninsula Metropolitan Park District
Hales Pass Indoor	Peninsula Metropolitan Park District
Madrona Links Indoor	Peninsula Metropolitan Park District
Rosedale Community Indoor	Peninsula Metropolitan Park District
Volunteer Verm Pavilion at Sehmel Homestead	Peninsula Metropolitan Park District
Key Peninsula Civic Center Indoor	Key Peninsula Civic Center Association
Nichols Community Center FICRA	FICRA
Tom Taylor Family YMCA	YMCA





## Next Steps

1

## Initial Project Planning

2

## Engagement

Focus Group Sessions  
Stakeholder Interviews  
Open House  
Statistically Valid Survey  
Project Web-site

3

## Analysis

Level of Service  
Recreation Assessment  
Operations Assessment  
-

4

## Findings and Visioning

Action and  
Implementation Plan  
Capital Improvement  
Plan

5

## Draft and Final Plan



# Open Q&A