

Decatur Bridge Feasibility Study

STP-51-7(109); CN 32395

Community Advisory Group (CAG) Meeting #1

January 18, 2024, 1:00 – 4:00 p.m.

Thank you, CAG representatives!

- **Role of the CAG**

- Provide insights and feedback
- Share information with your networks, friends, neighbors

- **Selection of CAG Members**

- Cross-section of local interests

- **Responsibility of CAG Members**

- Actively participate in meetings
- Allow all members an opportunity to speak
- Be respectful of opposing views

- **Public Access to CAG Meetings**

- Meeting materials and summaries posted to project website: ndot.info/32395

Today's Meeting Goals

- Share project overview and study goals
- Explain the study process and schedule
- Identify what are we missing?
- Gather information to build Purpose & Need
- Inform the development and evaluation of alignments
- Review draft community survey launching Feb. 1

AGENDA

CAG #1 Meeting

1:00 – 1:15 PM

Welcome & Introductions

1:15 – 1:45 PM

Project Overview & Existing Conditions

1:45 – 2:00 PM

Overview of the Small-group Discussions

2:00 – 2:15 PM

15-minute Break

2:15 – 3:00 PM

Small-group Discussions

3:00 – 3:30 PM

Groups Report Out & Discuss

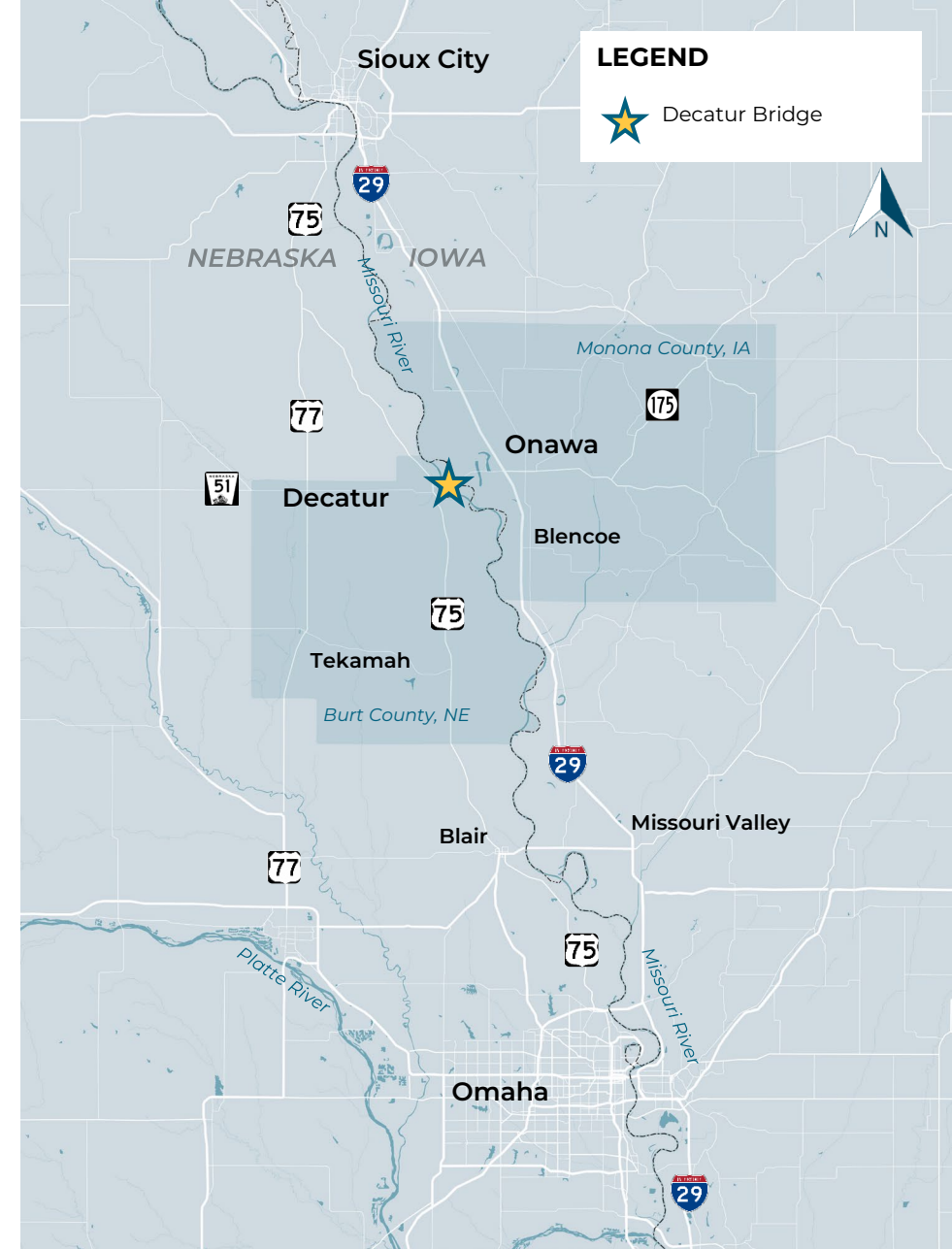
3:30 – 4:00 PM

Online Survey Overview & Wrap Up

Project Overview & Existing Conditions

Project Description

- Identified as **Decatur Bridge**, the proposed project would improve the Nebraska Highway 15 (N-51) / Iowa Highway 175 (IA-175) Missouri River crossing commonly referred to as the Decatur Bridge (S051 03644) in Burt County, Nebraska and Monona County, Iowa.
- The Decatur Bridge has been previously determined eligible for listing in the National Register of Historic Places (NRHP).
- Alternatives may include removal and replacement of the existing crossing or rehabilitation of the existing bridge.
- Will be prepared as a Federal-aid eligible project.



NEPA Process

- The National Environmental Policy Act (NEPA) is a Federal procedural law that establishes a national environmental policy. NEPA **provides a framework for environmental planning and decision-making** on projects that receive Federal funds or require Federal approvals.
- NEPA requires Federal agencies, when planning projects or issuing permits, to conduct environmental reviews to **consider the potential impacts on the environment** by their proposed actions.

Purpose & Need

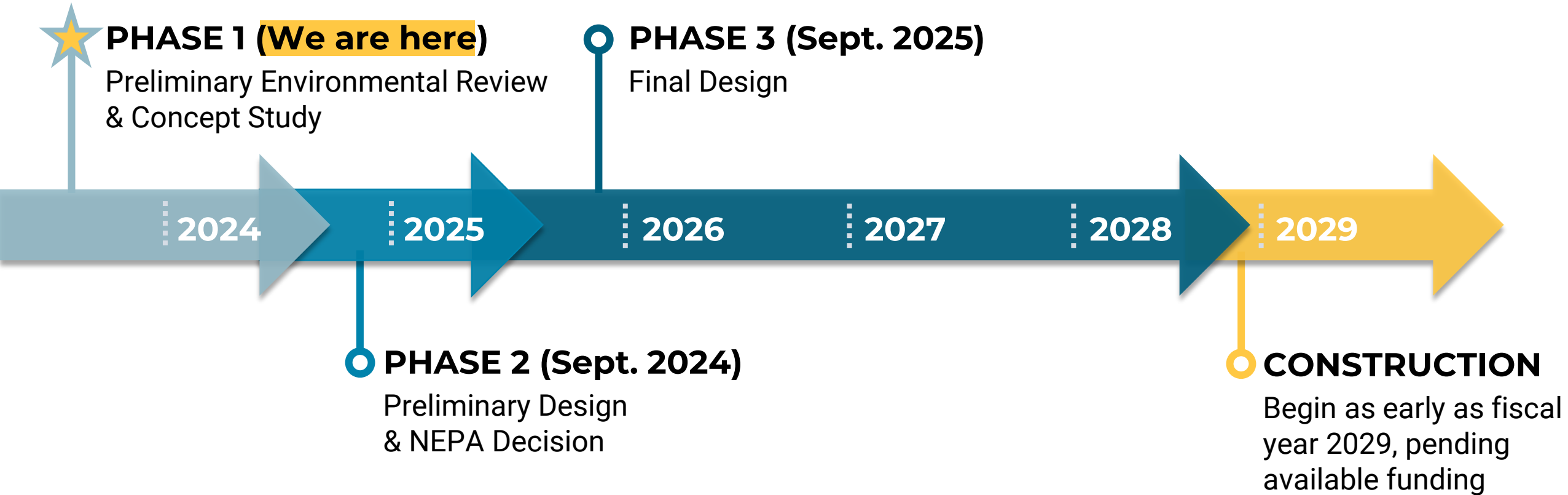
- The statement of the project purpose and need is the **core component** of the NEPA document. It serves as the **benchmark against which project alternatives are evaluated**.
- Briefly and precisely **states the transportation problem** and the intended **project objective**.

Options Being Considered

1. “Do nothing”
 - No action other than regular maintenance
 - Bridge deteriorates until permanent closure is required
2. Rehabilitate the existing bridge
3. Replace the bridge in the same location
4. Replace the bridge at a different location

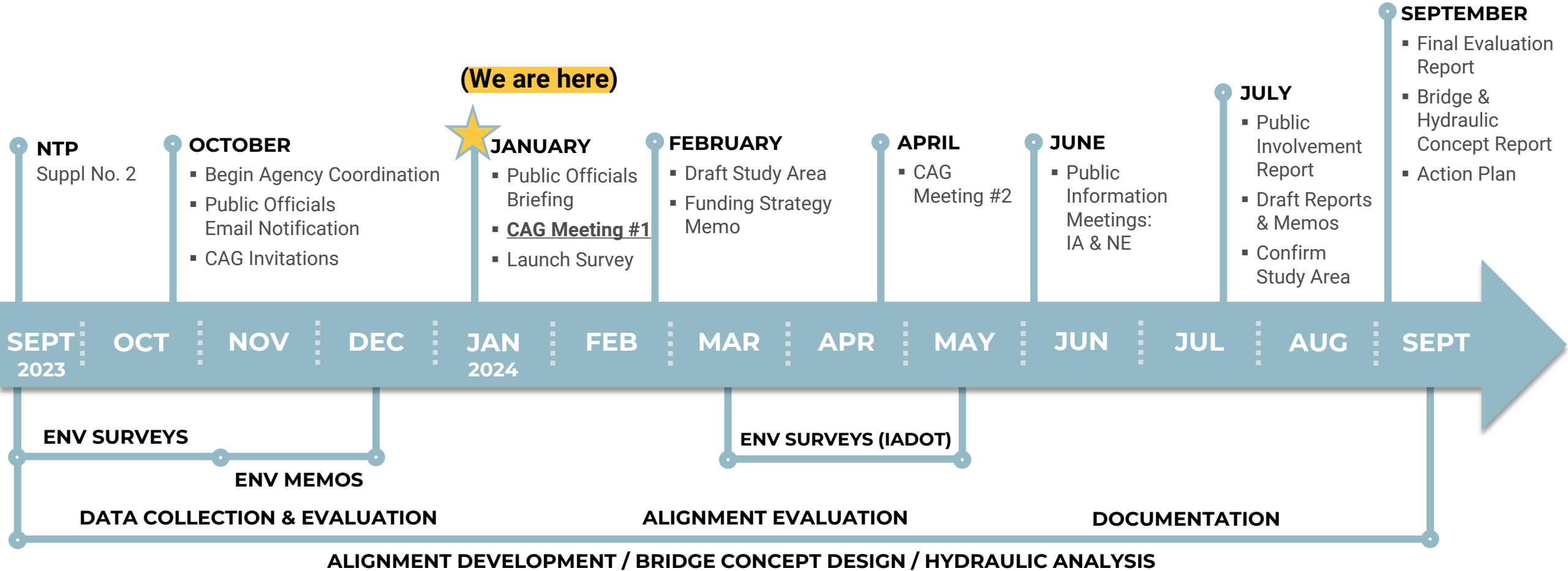
Project Phases

PRELIMINARY PLAN
NOT FINAL – SUBJECT TO CHANGE



Phase 1 Timeline

Preliminary Environmental Review & Concept Study

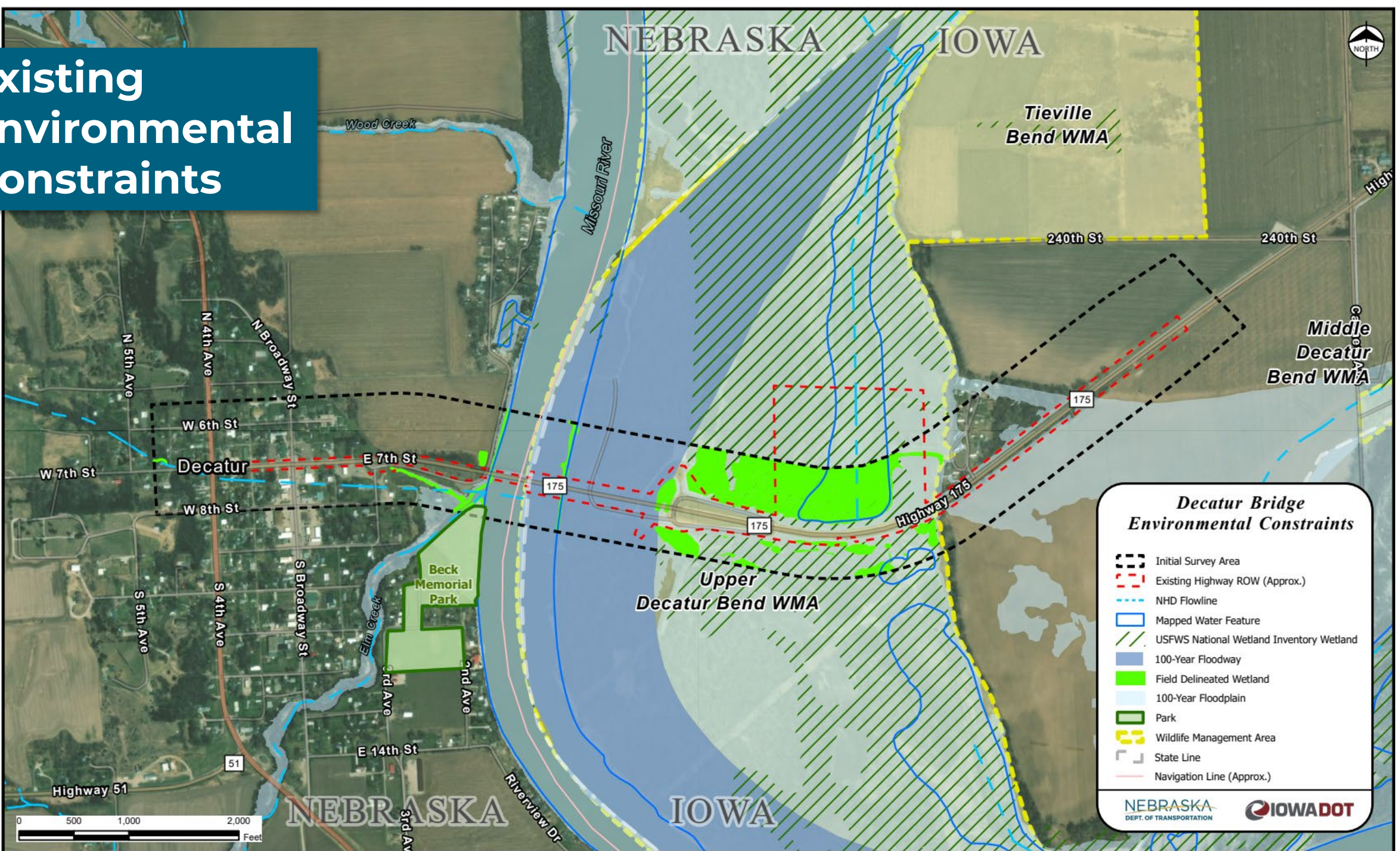


Next Steps

- Collect your input today
- Finalize and launch public survey – February 1
- Develop initial alignments
- CAG #2 meeting – April 2024
- Refine initial alignments
- Public meetings – June 2024

Existing Conditions

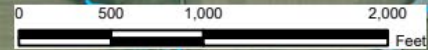
Existing Environmental Constraints



Decatur Bridge Environmental Constraints

- Initial Survey Area
- Existing Highway ROW (Approx.)
- NHD Flowline
- Mapped Water Feature
- USFWS National Wetland Inventory Wetland
- 100-Year Floodway
- Field Delineated Wetland
- 100-Year Floodplain
- Park
- Wildlife Management Area
- State Line
- Navigation Line (Approx.)

NEBRASKA DEPT. OF TRANSPORTATION | IOWA DOT



Existing Land Use

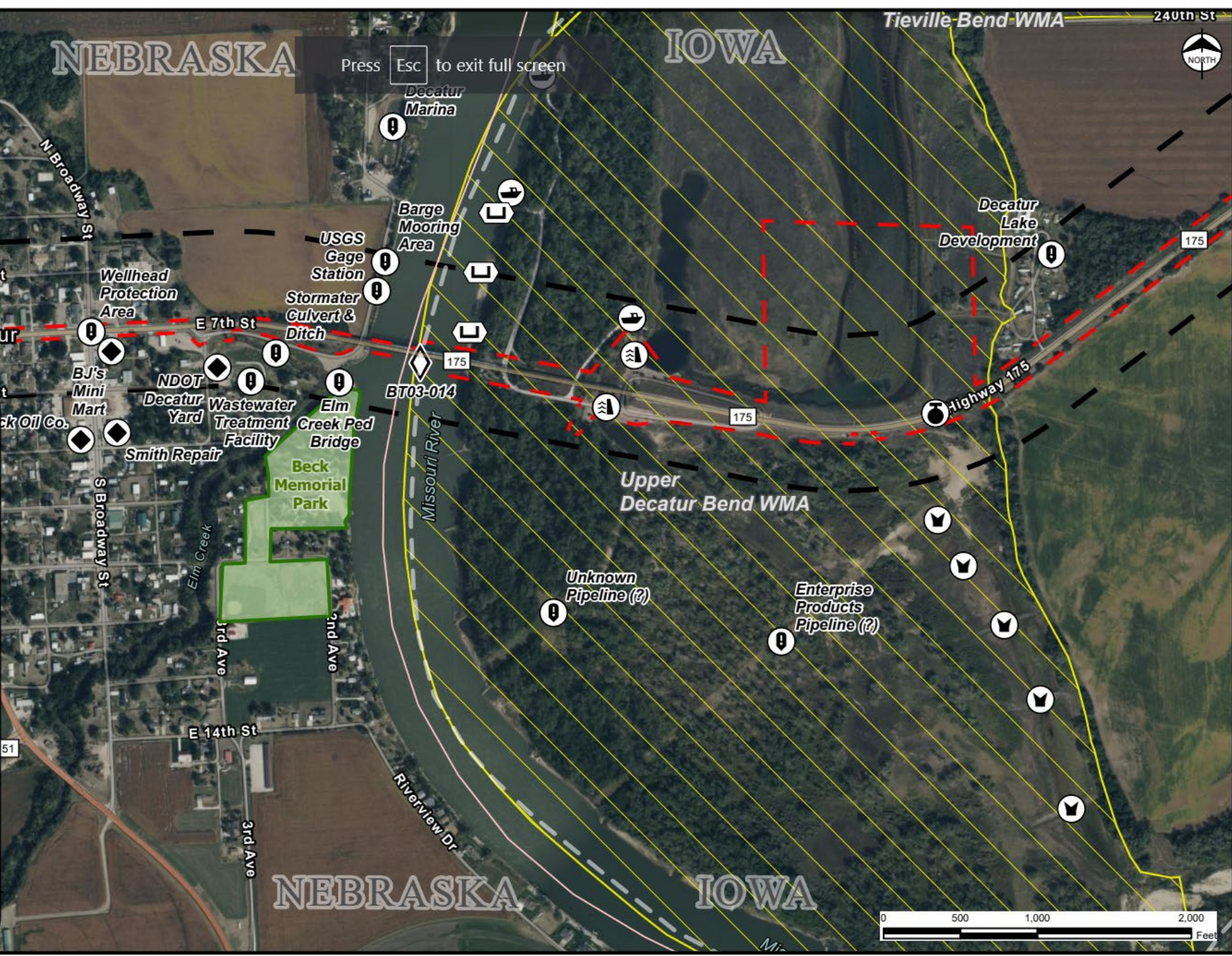
Press Esc to exit full screen



Decatur Bridge Land Use Constraints

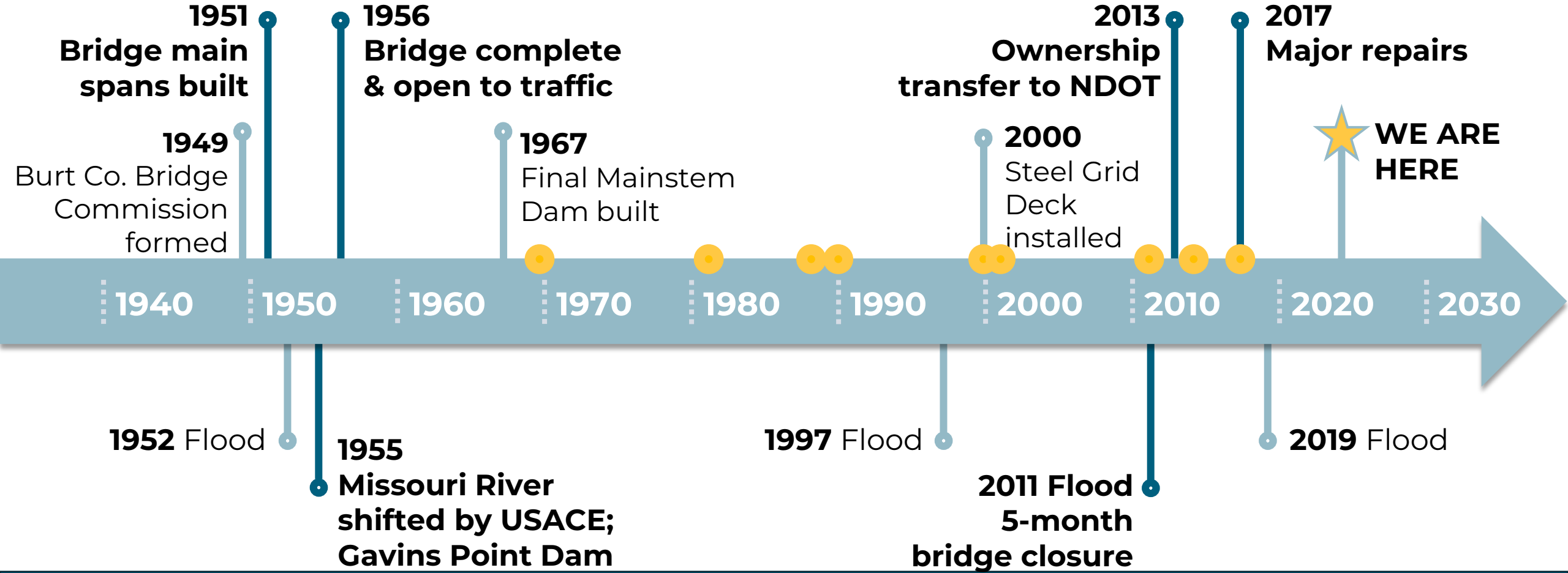
- NRHP-eligible Decatur Bridge
- Initial Survey Area
- Existing Alignment ROW (Approx.)
- Wildlife Management Area
- Culvert (USACE)
- Flood Repair Dike & Revetment
- Flow-Thru Weir (USACE)
- IADNR Boat Launch
- USACE Channel Training Structure
- Point of Interest
- Hazardous Materials Site
- Property of environmental concern
- State Line
- Navigation Line (Approx.)
- Park

NEBRASKA DEPT. OF TRANSPORTATION | IOWA DOT

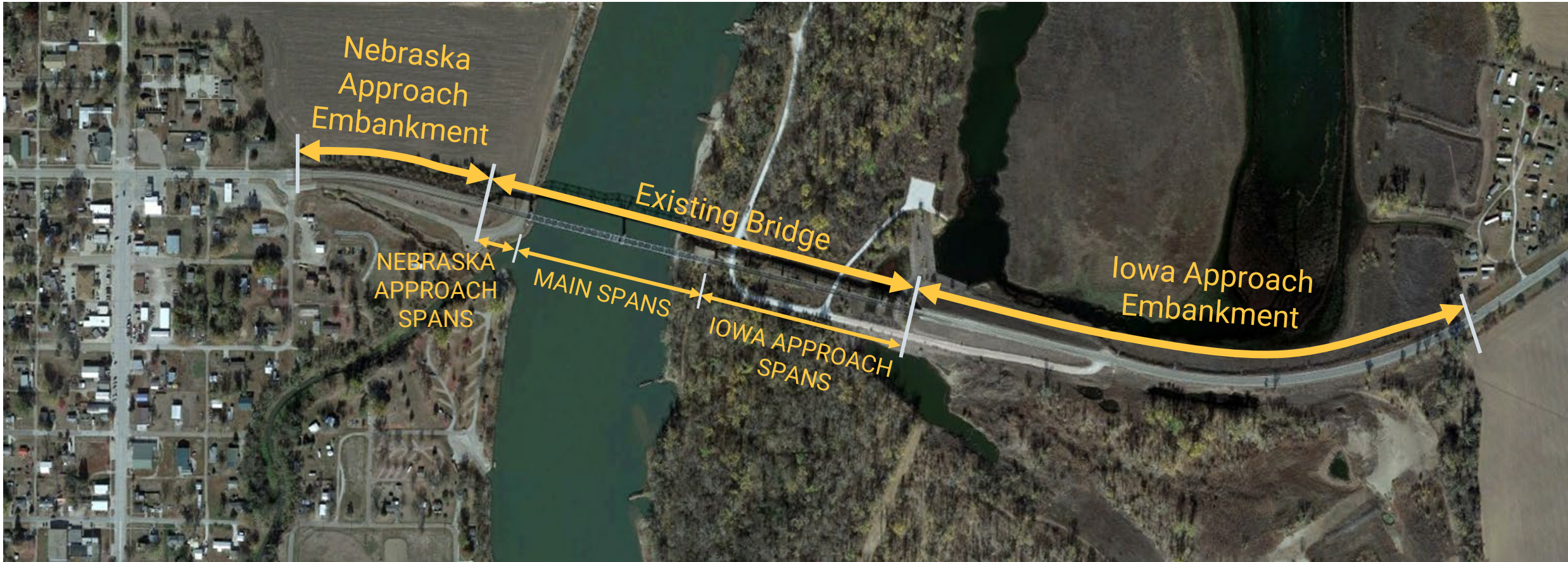


Bridge History

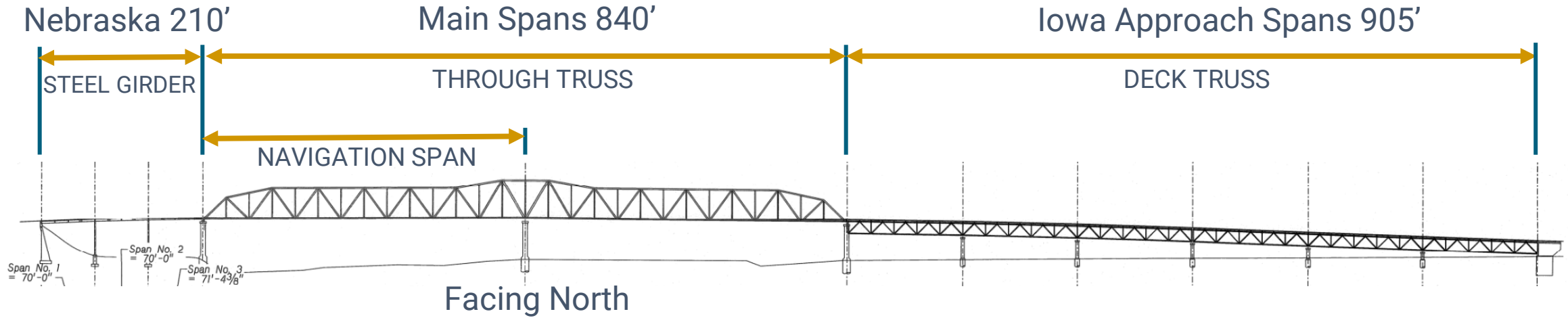
● = Structural Repairs on Bridge



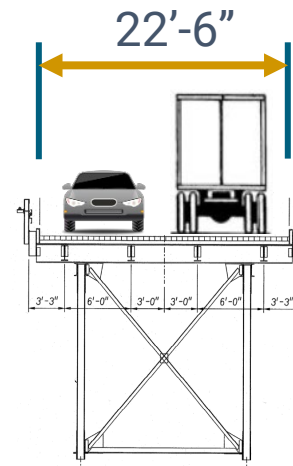
Existing Crossing Components



Existing Bridge Description



Clear Roadway



Existing Bridge Condition

Issue	Existing Condition	Notes
Bridge Age	73 years	Built in 1951
Repair Frequency	Structural repair projects performed 9 times since 1970	Ongoing annual maintenance
Structural Deficiencies	Identified during regular DOT inspections (every 2 years)	<i>Urgent:</i> Addressed by DOT immediately. <i>Non-urgent:</i> Scheduled for maintenance or repair. Due to age, new deficiencies have been identified with each inspection.
Roadway Width	22'-6" clear width 11'-3" lanes, no shoulders	<i>Current standard:</i> 36'-0" clear width (minimum) 12'-0" lanes, 6'-0" shoulders (minimum)
Load Posting	25 tons	<i>Current standard:</i> Legal loads
Scour (Erosion) Risk	2011 Flood: Erosion at east end resulted in 5-month bridge closure	Stabilization measures built by Iowa DOT. Overall hydraulic conditions that led to scour remain.

Overview of the Small-group Discussions

Group Facilitators



Michelle



Shari



Andrew



Brandon

Small-group Discussions

1:45 – 2:45 PM

Report Back & Discussion

Identify

What is missing?

Gather

Build foundation of the Purpose & Need

Inform

Development & Evaluation of Alignments

- Do Nothing
- Repair
- Replace

Community Survey Overview

Scheduled to launch February 1

Please provide your feedback!

Help shape the future of the Decatur Bridge!

There are two opportunities to engage. It only takes a few minutes to participate in the below activities.



Take a quick survey

What issues do you have with the existing bridge? If a new crossing were built, how could it be improved? Could the bridge be moved to better serve the community? Share your thoughts with the team to help inform the study process.

Take The Survey



Drop pins on a map

Where do you travel in Burt and Monona counties? What local landmarks or locations are community assets? What should be considered? Share location-based details by dropping pins on a map and leave a comment.

Drop Pins On A Map



Decatur Project Website: ndot.info/32395

Use your phone camera to hover over the QR code then click to visit the webpage.

Your name

Decatur Simple Survey

How do you travel and why?

1. How often do you travel across the Decatur Bridge?

- Less than 6 times a year
- 6 to 12 times a year
- 1 to 4 times a month
- 4 or more times per week

2. What is the primary purpose of your trip? Select the top 3.

- Work
- School/Education/Daycare
- Healthcare
- Personal errands (groceries, salon/barber, veterinary care)
- Entertainment (Dining, shopping, etc.)
- Family/friends
- Other (describe)

3. How do you typically travel across the bridge? Select all that apply.

- Personal vehicle
- Carpool/Rideshare
- Public transit/On-demand
- Large truck or semi
- Farm equipment
- Other (describe)

Next Steps

- Collect your input today – please return handouts with notes
- Finalize and launch community survey – February 1
 - Help get the word out to your networks!
- Develop initial alignments
- CAG #2 meeting – April 2024
- Refine initial alignments
- Public meetings – June 2024

**Thank you for being a
part of this important
community project.**