



COMPREHENSIVE
MULTIMODAL
CORRIDOR PLAN

Central Mobility Hub and connections

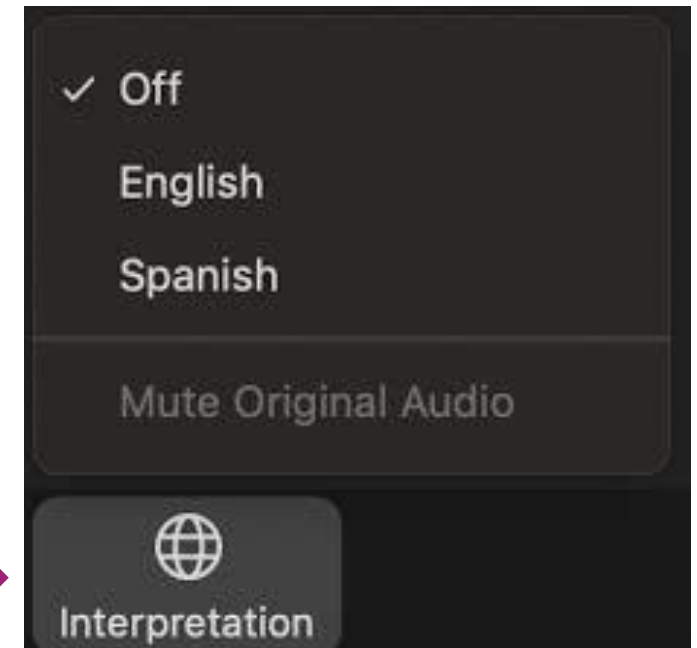
Public Workshop

June 7, 2021

Este taller se llevará a cabo en español e inglés



- Para hacer uso del servicio de interpretación, favor de desplazarse a la parte inferior de la pantalla de Zoom (donde aparecen los controles)
- Haga clic en el ícono de interpretación (icono del mundo), y seleccione "Spanish" (español)
- Si está utilizando la aplicación móvil de Zoom (celular, tableta, etc.), presione los puntos suspensivos (...), luego "interpretation," y luego el idioma



Virtual Meeting Guidelines

- This meeting will be recorded
- Microphones will be muted during the presentation
- You may share comments and ask questions via the Q&A function, which also will be recorded
- Opportunities to ask questions will be provided near the end of the presentation

Opening Remarks

Agenda

- Workshop Objective
- Regional Plan Update
- Comprehensive Multimodal Corridor Plan Process
- Transportation Solutions Strategies
- Public Comments and Polling Questions
- Next Steps

Workshop Objective



This workshop will present:

- Status report of the Central Mobility Hub and Connections Comprehensive Multimodal Corridor Plan (CMH and Connections CMCP)
- Presentation of work completed since the last workshop
- Discussion of how community input was integrated
- Overview of proposed transportation improvement strategies

The feedback you provide will help finalize the strategies to be detailed in the final corridor plan.

Interact With Us

MAP

Interactive Map

Use this map to highlight what you like, identify project concerns, make a comment, and provide ideas and suggestions.

START 11 Mar

END 18 Jun

See Project Map

COMMENT

We Would Love to Hear from You

Please fill out our comment form.

START 11 Mar

END 18 Jun

Comment Form

SURVEY

Survey

We invite you to share your input with us by taking this survey. Completing the survey will take fewer than 10 minutes.

START 15 Apr

END 18 Jun

Take The Survey

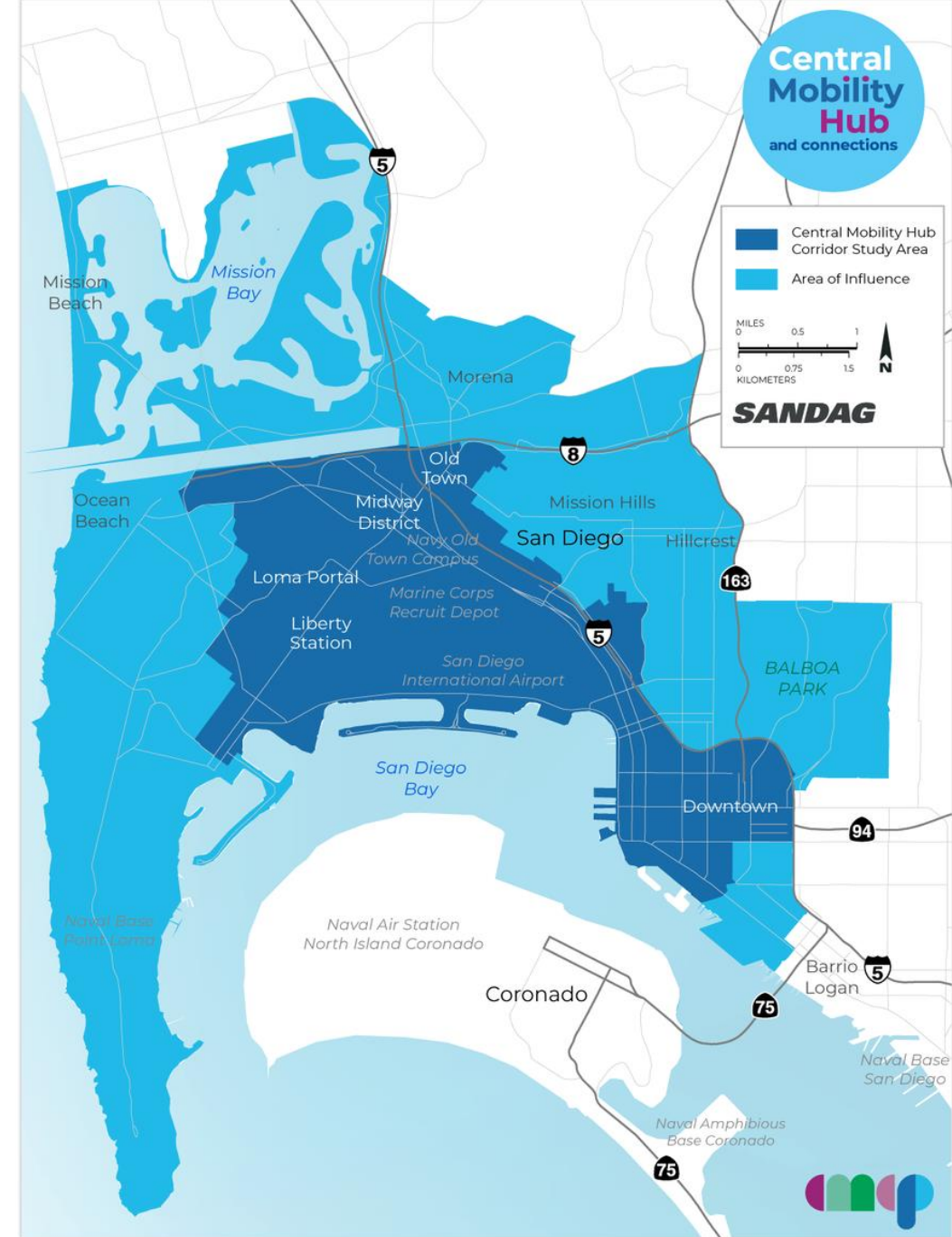


Visit sandag.mysocialpinpoint.com/CMHandConnections
or scan here!

Polling Question:

We'd like to know more about you. What is your connection to the project area? (Check all that apply.)

- ☐ Live
- ☐ Work
- ☐ Own a business
- ☐ Visit for shopping/entertainment
- ☐ Attend school
- ☐ Visit recreational areas
- ☐ Other (please post in Q&A)

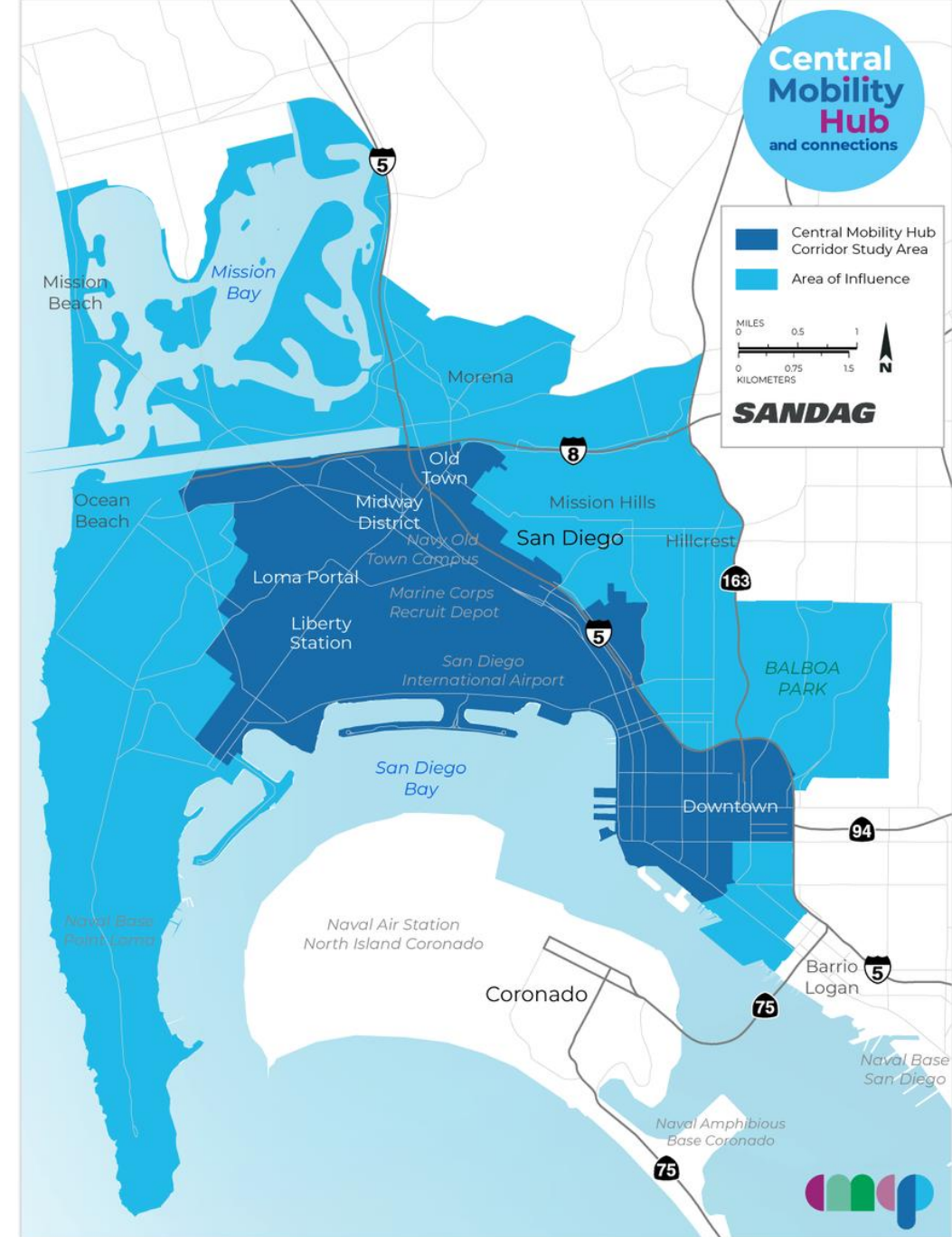


Note: The area of influence represents the demographic and travel analysis developed from a larger census tract based area. Transportation solutions will be focused within the study area boundary.

Polling Question:

Did you participate in our first public workshop, held on March 11, 2021?

- ☐ Yes
- ☐ No
- ☐ I watched the recording

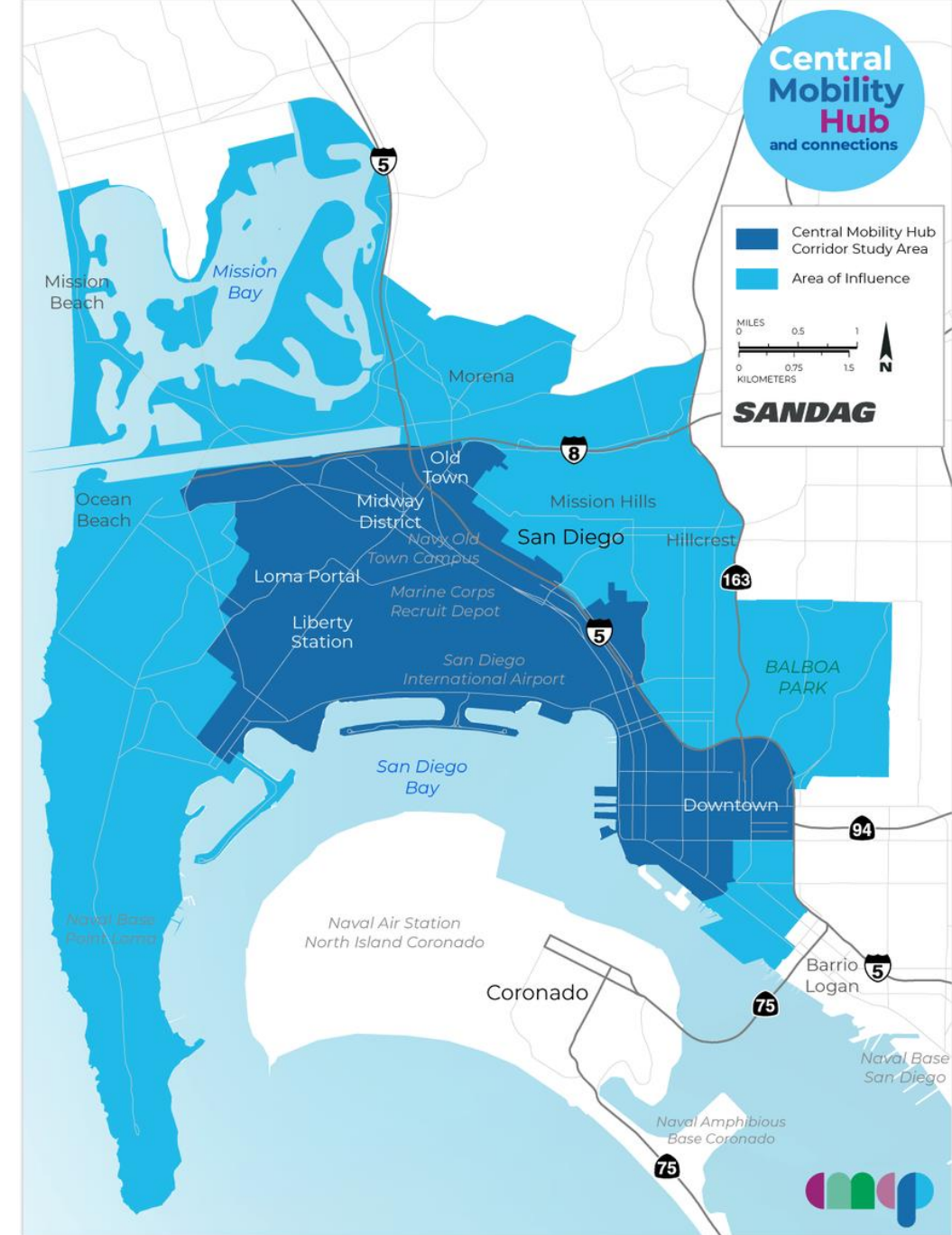


Note: The area of influence represents the demographic and travel analysis developed from a larger census tract based area. Transportation solutions will be focused within the study area boundary.

Polling Question:

How did you hear about this workshop?

- ☐ SANDAG website
- ☐ Virtual engagement site
- ☐ Social media
- ☐ SANDAG e-blast
- ☐ Other electronic news source
- ☐ Newspaper advertisement
- ☐ Community group or organization
- ☐ Word of mouth
- ☐ Other (please post in Q&A)



Note: The area of influence represents the demographic and travel analysis developed from a larger census tract based area. Transportation solutions will be focused within the study area boundary.

Regional Plan Update



A Vision for the 2021 Regional Plan

5 Big Moves

Next OS

Enabling
technology

Complete Corridors

Backbone of a
multimodal system

Flexible Fleets

First and
Last mile
options

Transit Leap

Quality transit
alternatives to
automobiles

Mobility Hubs

Connection and transfer points

SANDAG

Caltrans



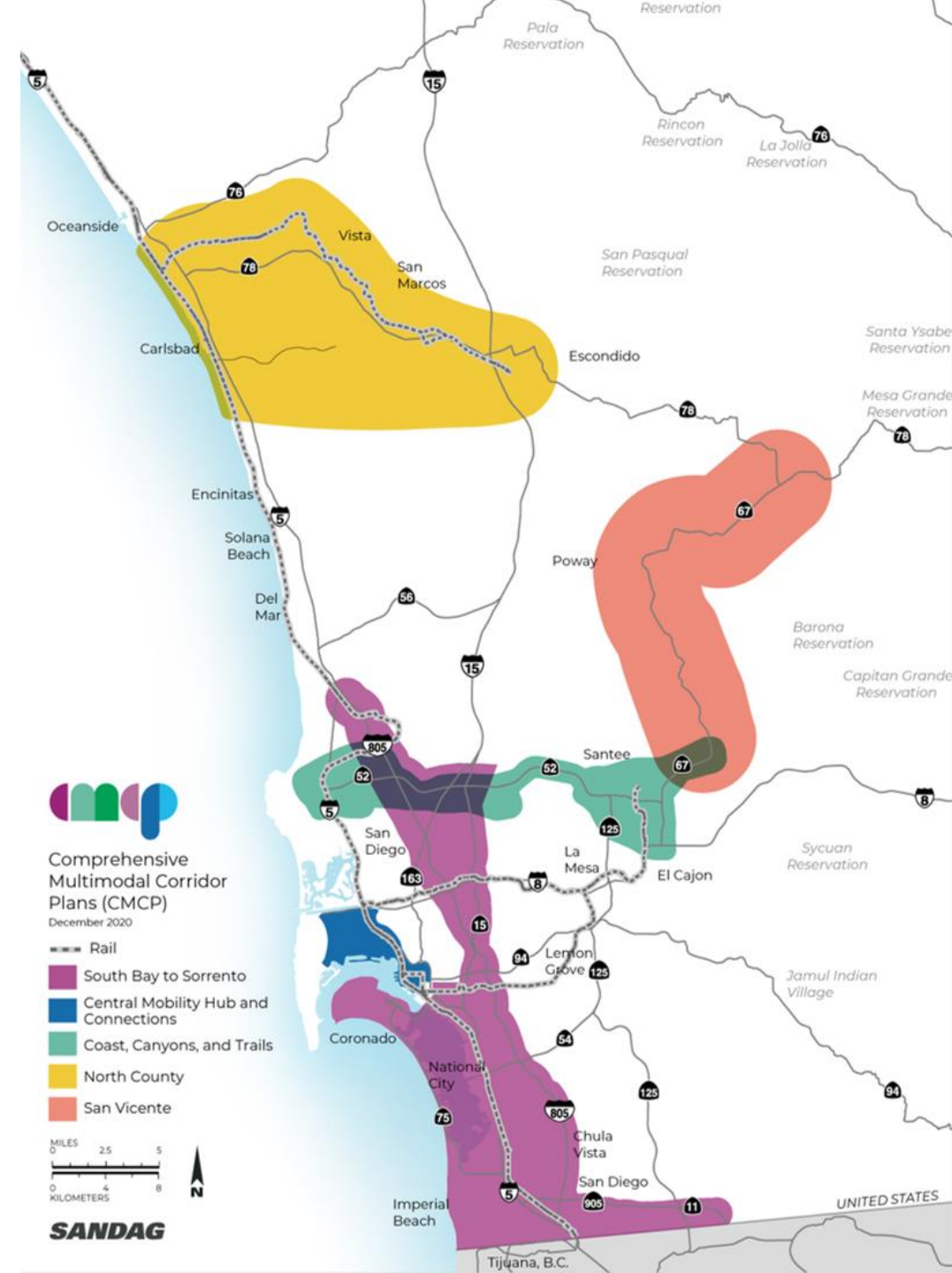
2021 Regional Plan

- **May 17 and 21:** SANDAG Board of Directors Workshops detailing the transportation system
- **May 28:** Draft 2021 Regional Plan released for public review and comment through July 30, 2021
- **June:** Series of virtual open houses
- **July:** Two virtual public hearings
- **Summer:** Draft Environmental Impact Report anticipated to be released for public review
- **Late 2021:** SANDAG Board of Directors asked to adopt the 2021 Regional Plan and certify the Final Environmental Impact Report
- More information on sdforward.com

Comprehensive Multimodal Corridor Plans

Overview

- Five transportation corridors currently in development
- Corridor Plans are data-driven and will:
 - Evaluate travel modes and transportation facilities
 - Develop transportation solutions
 - Improve multimodal connections
 - Decrease environmental threats
- Corridor Plans help the San Diego region compete for local, state, and federal funds



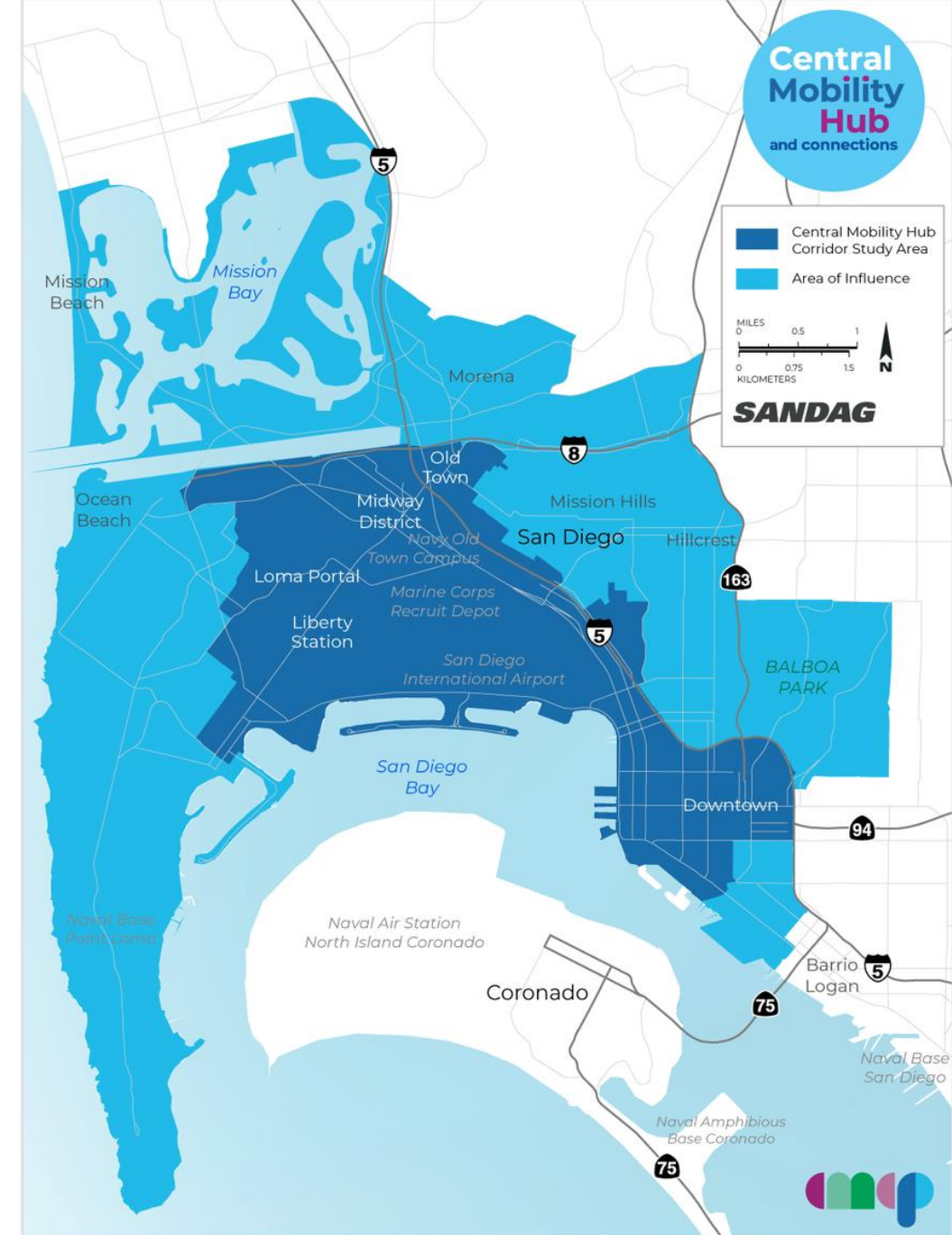
Central Mobility Hub and Connections Comprehensive Multimodal Corridor Plan



Central
Mobility
Hub
and connections

Corridor Study Area

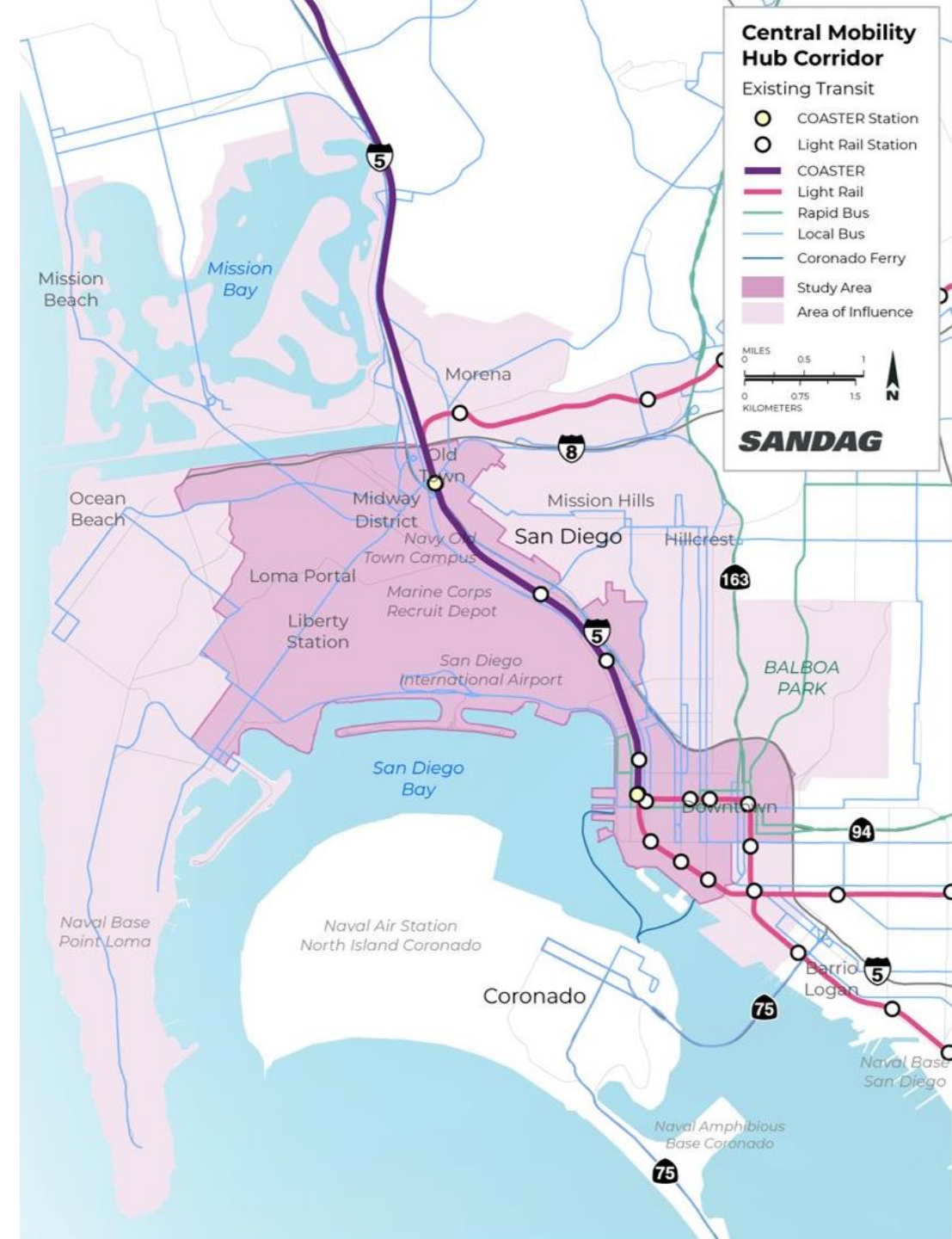
- Focus area includes Midway District, Old Town San Diego, Downtown San Diego, and parts of Point Loma
- Corridor demographics:
 - 6% of the region's population
 - 12% of the region's jobs
 - 7% of the region's housing units
 - 6% of the region's senior population
 - 7% of the region's low-income population
 - 4% of the region's People of Color



Note: The area of influence represents the demographic and travel analysis developed from a larger census tract based area. Transportation solutions will be focused within the study area boundary.

Existing Transportation Network

- Key Issues and Challenges
 - Insufficient transit connections to San Diego International Airport
 - Traffic congestion
 - Gaps in pedestrian and bikeway network
 - Lack of first- and last-mile connections to transit
 - Limited transit amenities
- Key Solution: Central Mobility Hub connected to the surrounding communities by a robust multimodal network

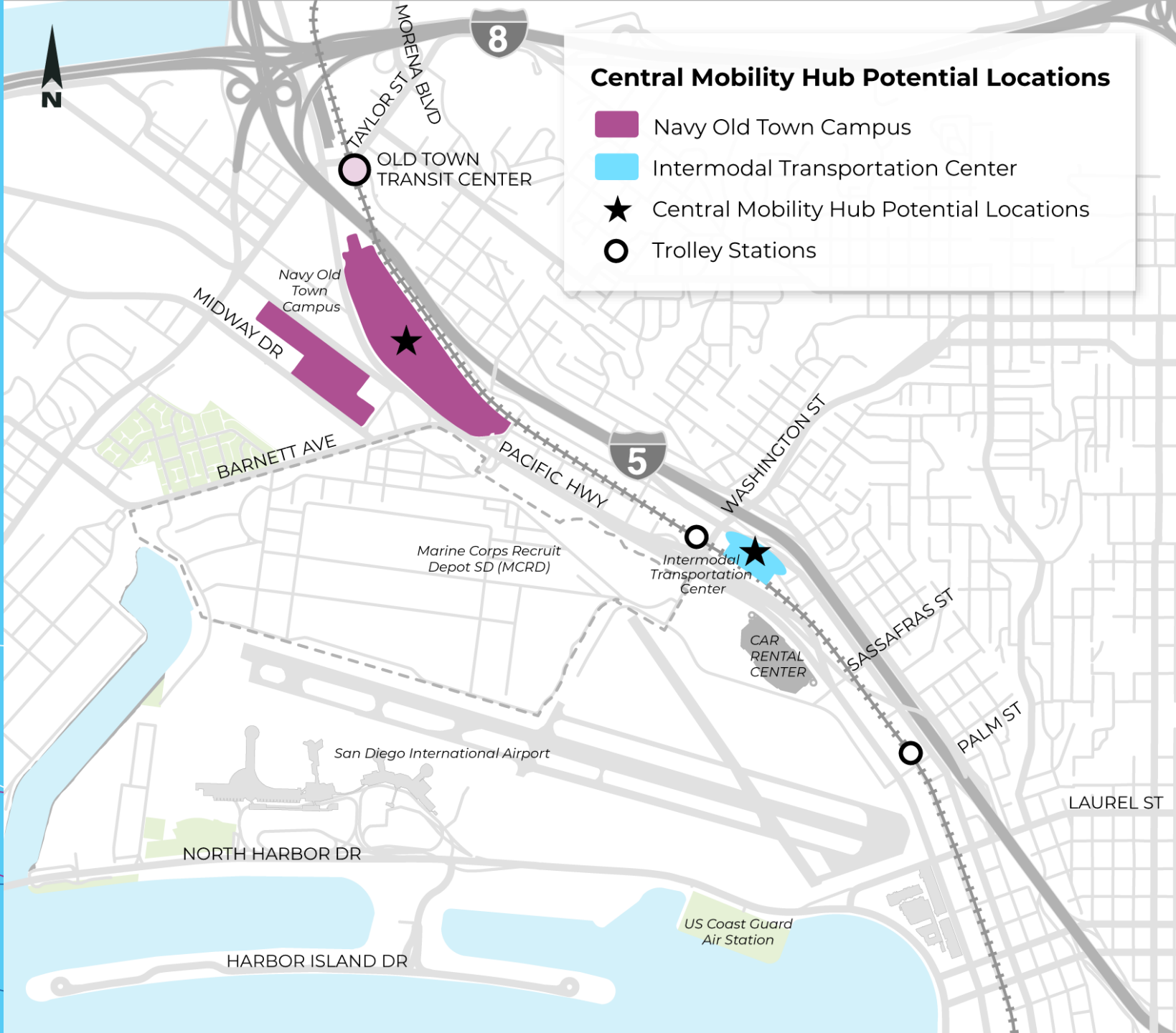


Central Mobility Hub Vision

- Improve public transportation access to San Diego International Airport
- Improve connections to public transportation and destinations for bicyclists and pedestrians
- Increase transit ridership and improve traffic flow within community
- Create a safe, clean, and inviting space for the community to gather



Potential Locations for Central Mobility Hub



Summary of Last Workshop

- Presentation of three concepts for the Central Mobility Hub (Two at Navy Old Town Campus and one at Intermodal Transportation Center)
- Discussion about the types of amenities preferred at the Central Mobility Hub
- Discussion about concept preferences
- *Virtual Engagement Site Mapping Activity:* Opportunity to provide additional feedback related to concept preferences and transportation barriers within the study area



What We Heard

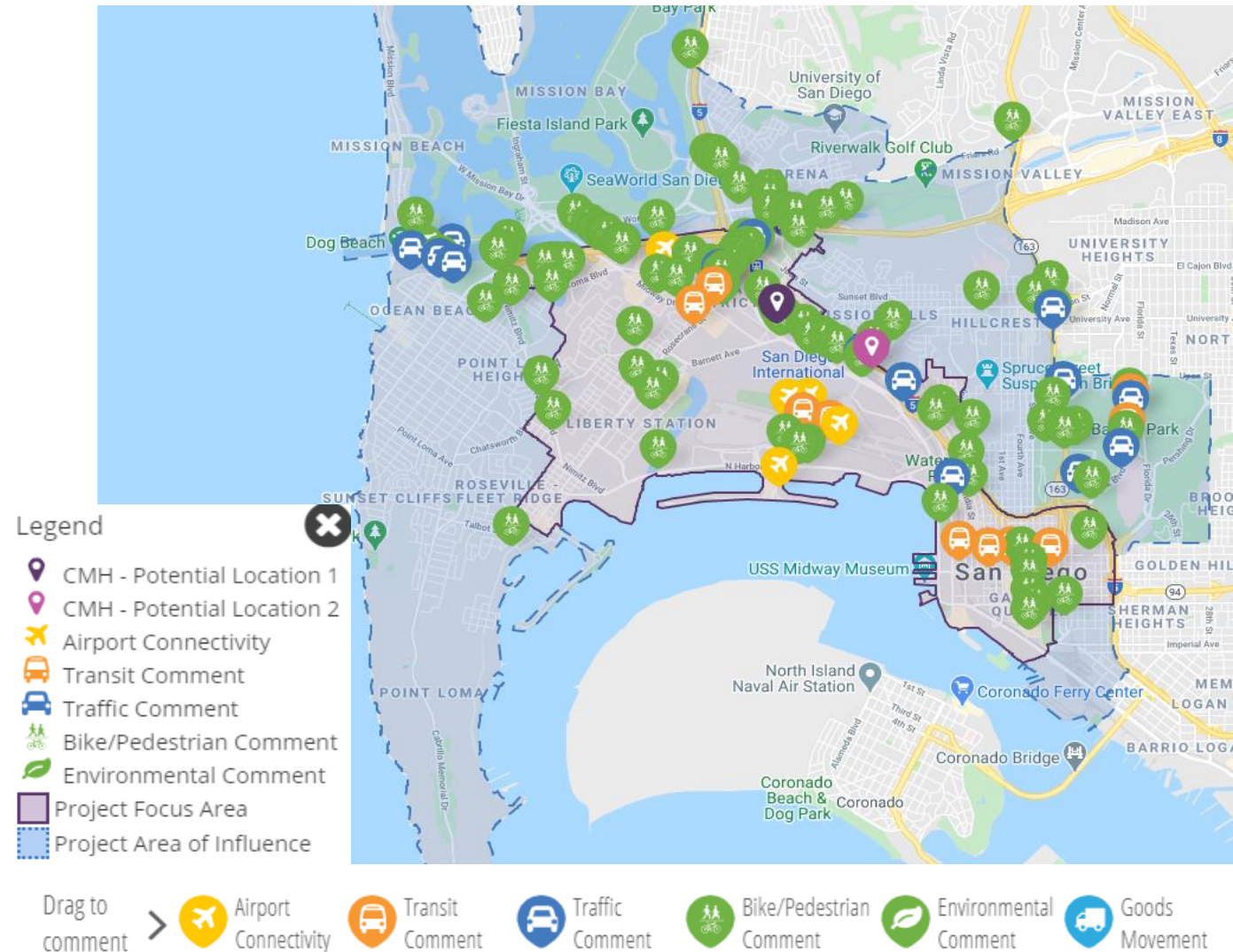
Virtual Engagement Site Feedback

- **219 Interactive Map Comments**

- 138 Bike/Pedestrian
- 22 Traffic
- 24 Transit
- 13 Goods Movement
- 3 CMH Location
- 9 Airport Connectivity
- 7 Environmental
- 3 General Comment

- **182 Survey Responses**

- **34 Comment Forms**



Key Takeaways

Central Mobility Hub Location:	Transportation Connections:
Should be a welcoming community space	Protected bikeways along major arterials connecting to Central Mobility Hub
Include mixed use space	Pedestrian safety improvements
Need bike amenities and electric vehicle charging stations	Improved transit connections from Midway District, Downtown San Diego, and airport
Concern for long walking distances between modes, space for freight/ truck deliveries, traffic congestion	Protected bike intersections along corridors including University Avenue, Nimitz Boulevard, W. Point Loma Boulevard, and Pacific Highway
Slight community preference for site concept 2	Concern for high vehicular speeds along major arterials including Rosecrans Street, Nimitz Boulevard, Morena Boulevard, and Sports Arena Boulevard



Comments and Survey Feedback Due: June 18



Interactive Map

Use this map to highlight what you like, identify project concerns, make a comment, and provide ideas and suggestions.

START 11 Mar END 18 Jun



See Project Map



We Would Love to Hear from You

Please fill out our comment form.

START 11 Mar END 18 Jun



Comment Form



Survey

We invite you to share your input with us by taking this survey. Completing the survey will take fewer than 10 minutes.

START 15 Apr END 18 Jun



Take The Survey



Visit sandag.mysocialpinpoint.com/CMHandConnections
or scan here!



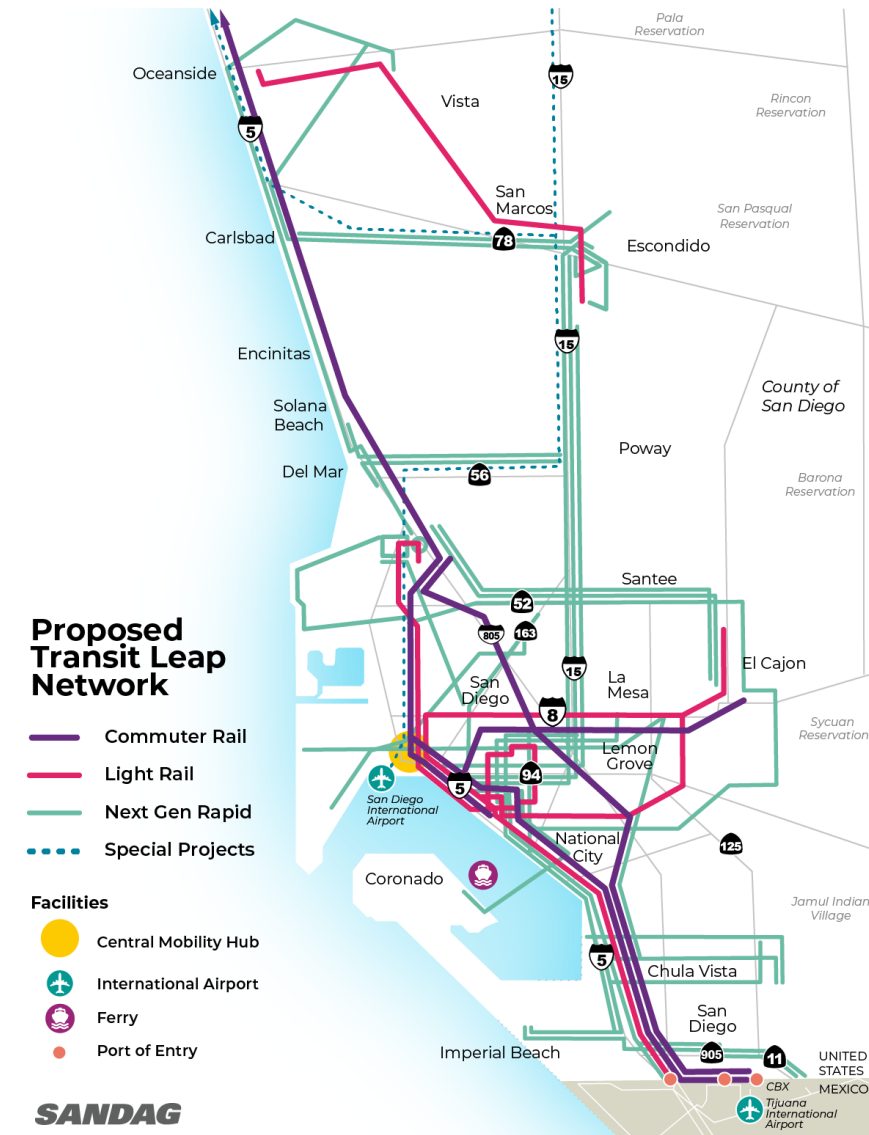
Transportation Solutions



**Central
Mobility
Hub**
and connections

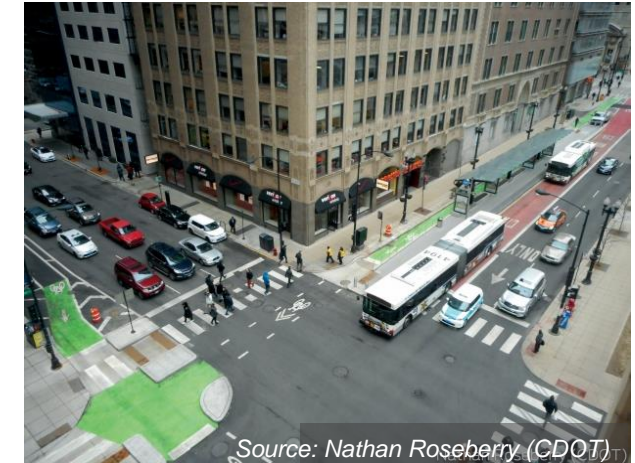
Objectives of Transportation Solutions

- Improve access to modes and transportation options regionally and within the study area
- Increase connectivity between surrounding communities
- Support and enhance local projects and initiatives
- Increase safety and comfort for all users, with a particular focus on vulnerable groups
- Prepare the region for the deployment of new technology and transportation options

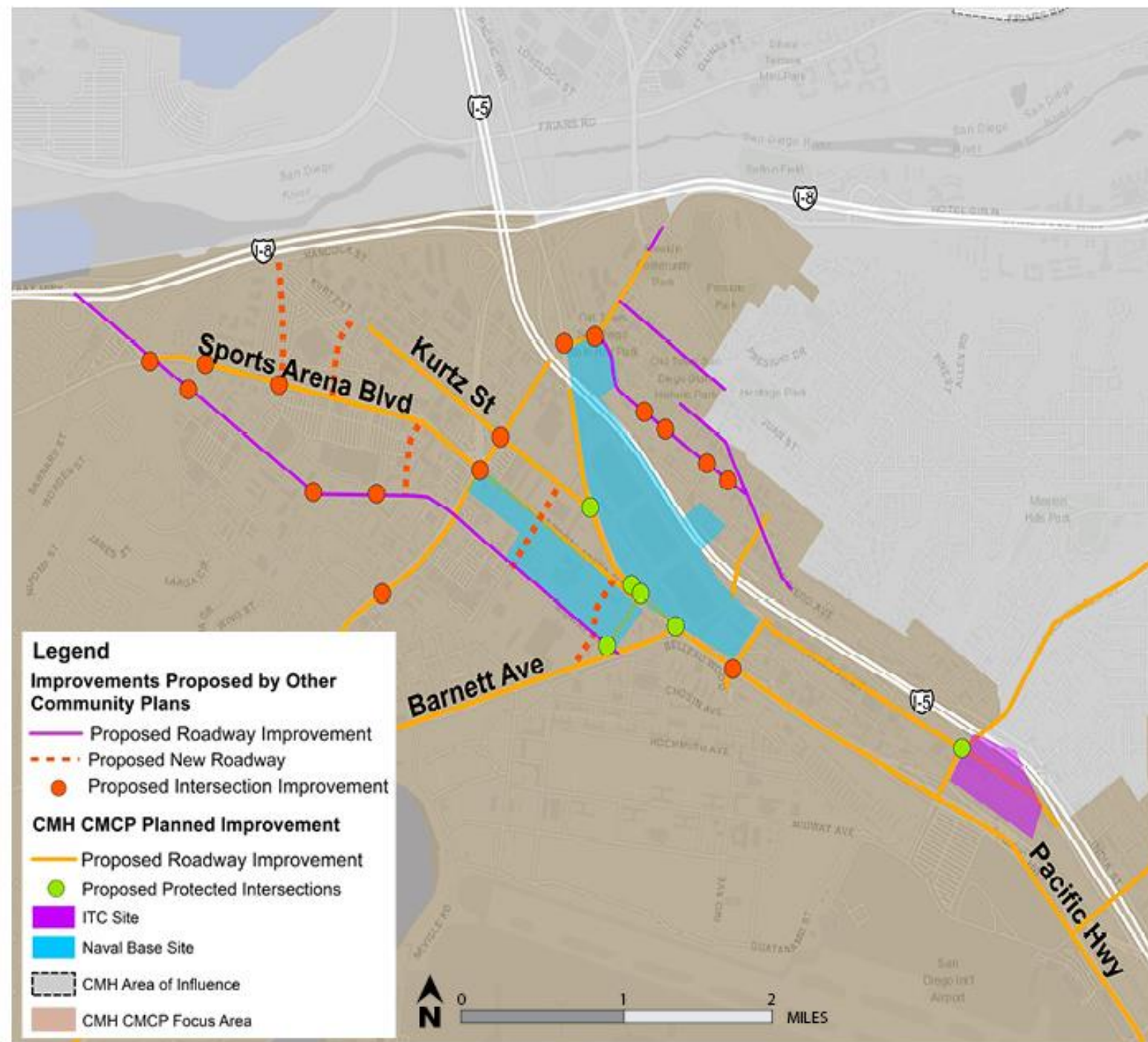
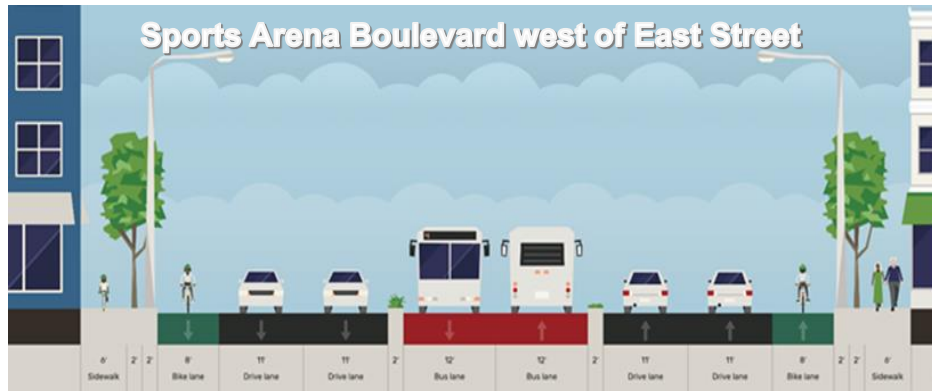


Complete Corridors Strategies

- Roadway improvements
- Pedestrian improvements
- Bicyclist improvements
- Transit improvements
- Climate resiliency
- Goods movement

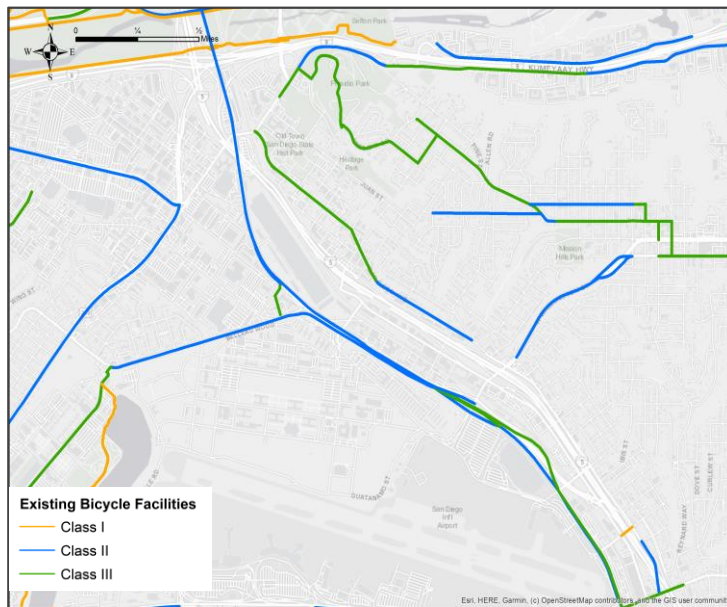


Connecting to the Central Mobility Hub

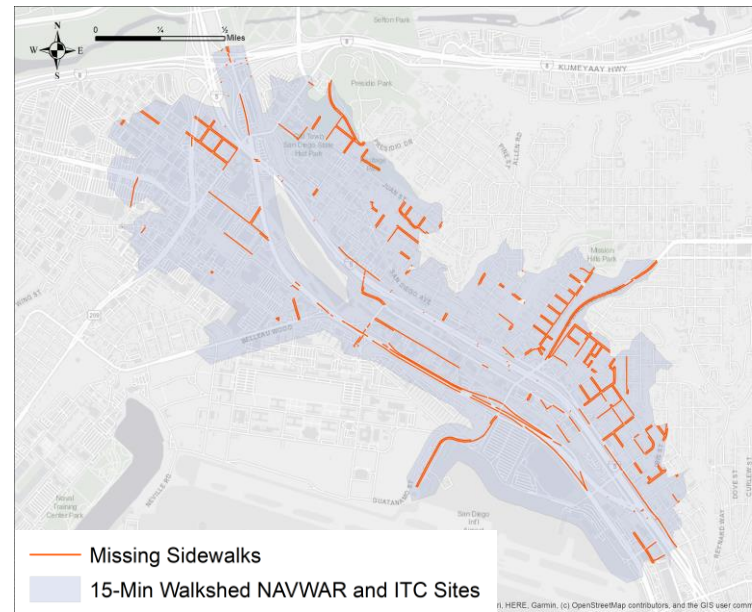


Active Transportation Strategies – Key Concepts

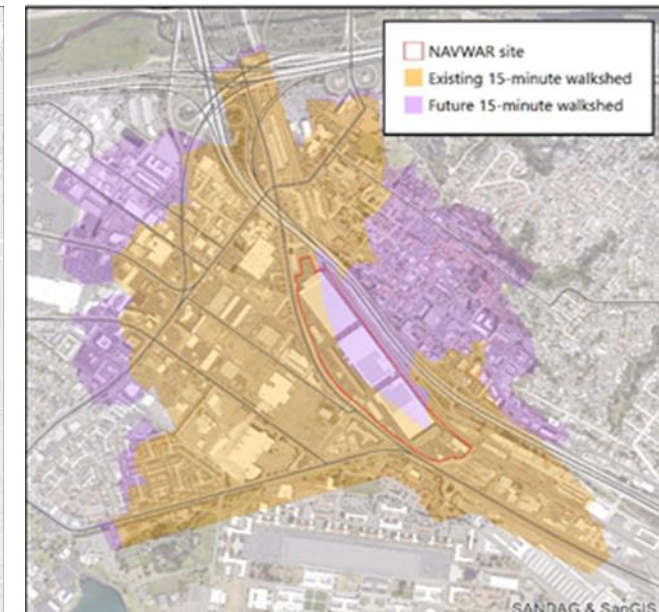
- Strategies focused on **increasing safety and comfort** for riders – focus on protected bikeways (Class I and Class IV bikeways)
- Looking at existing network and providing infrastructure to **close the gaps**



Existing Bike Network



Missing Sidewalk Network



15-Minute Walkshed

Active Transportation Strategies

- **Protected Bikeways (Class IV Bikeways)**
 - Provides a safer connection between existing and/or planned facilities for bicyclists traveling to the Central Mobility Hub and surrounding communities
- Bike Amenities
 - Amenities like bike share and bike lockers provide increased access to the bikeway network and enhance cyclist comfort
- Widened Sidewalks
 - Provides a safe and continuous sidewalk network that will improve walkability throughout communities



Active Transportation Strategies

- Protected Bikeways (Class IV Bikeways)
 - Provides a safer connection between existing and/or planned facilities for bicyclists traveling to the Central Mobility Hub and surrounding communities
- **Bike Amenities**
 - Amenities like bike share and bike lockers provide increased access to the bikeway network and enhance cyclist comfort
- Widened Sidewalks
 - Provides a safe and continuous sidewalk network that will improve walkability throughout communities



Source: Architectural Resources Group

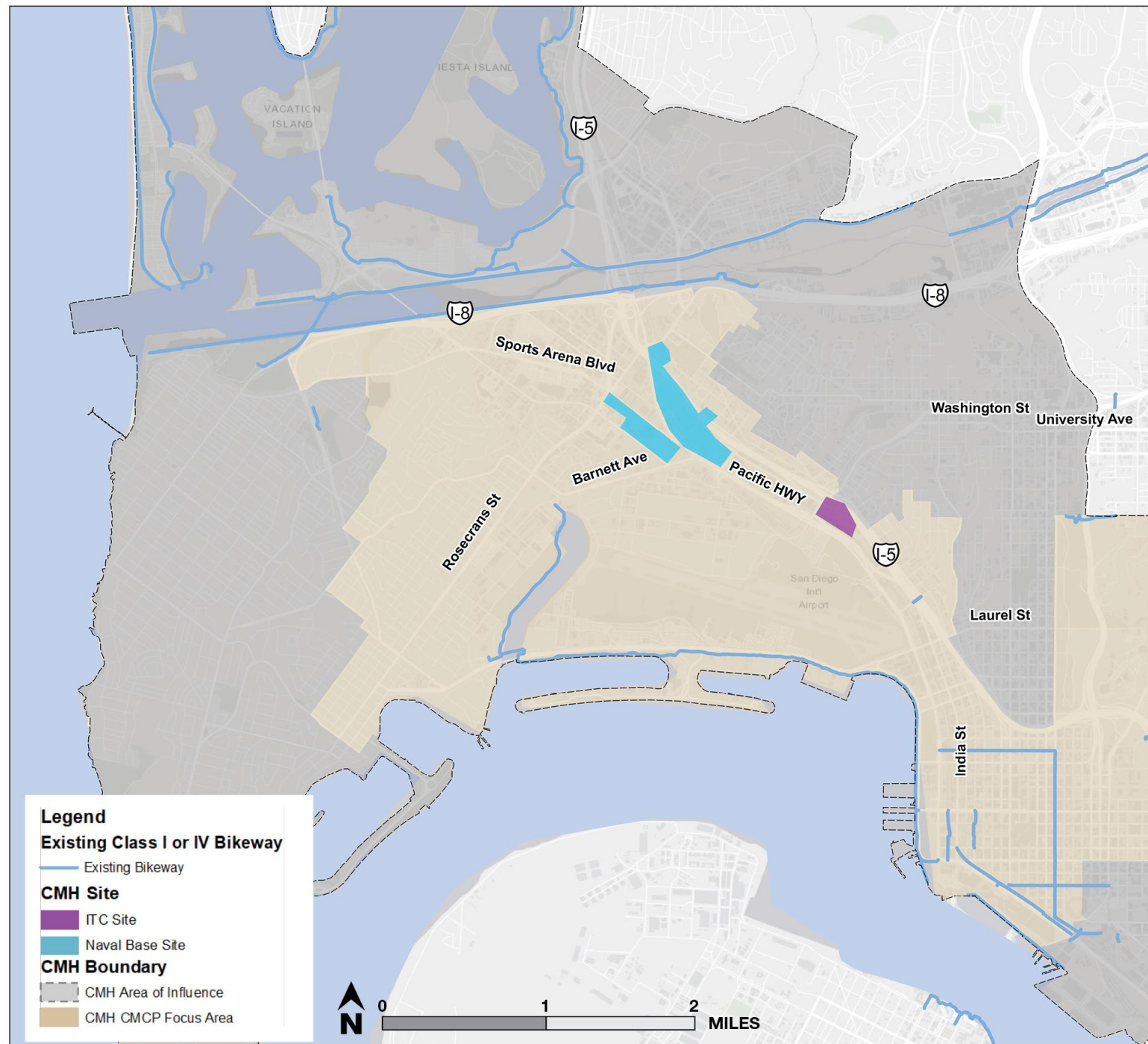
Active Transportation Strategies

- Protected Bikeways (Class IV Bikeways)
 - Provides a safer connection between existing and/or planned facilities for bicyclists traveling to the Central Mobility Hub and surrounding communities
- Bike Amenities
 - Amenities like bike share and bike lockers provide increased access to the bikeway network and enhance cyclist comfort
- **Widened Sidewalks**
 - Provides a safe and continuous sidewalk network that will improve walkability throughout communities



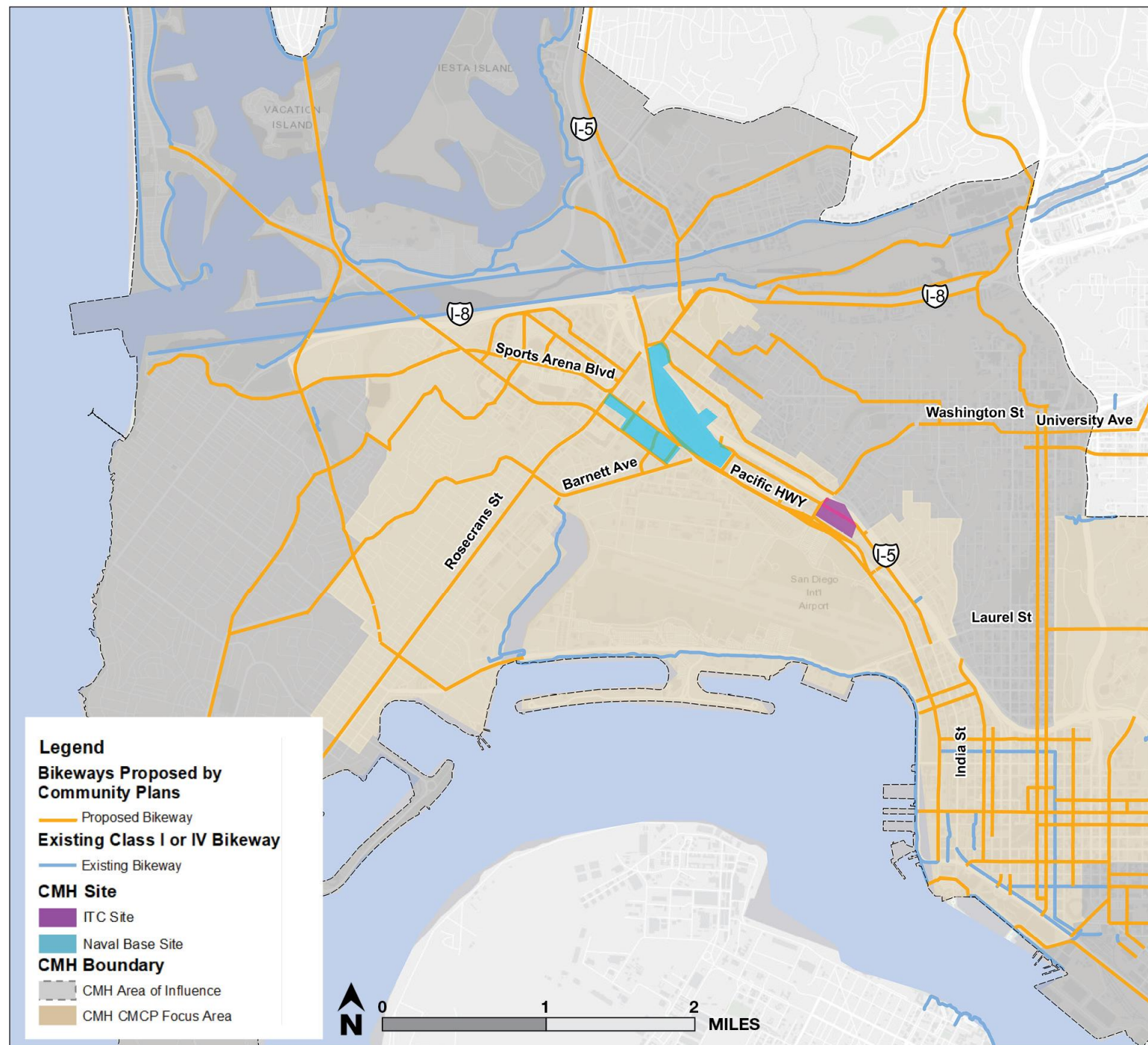
Active Transportation Strategies

Existing Protected Bikeways (Class I or IV Bikeways)



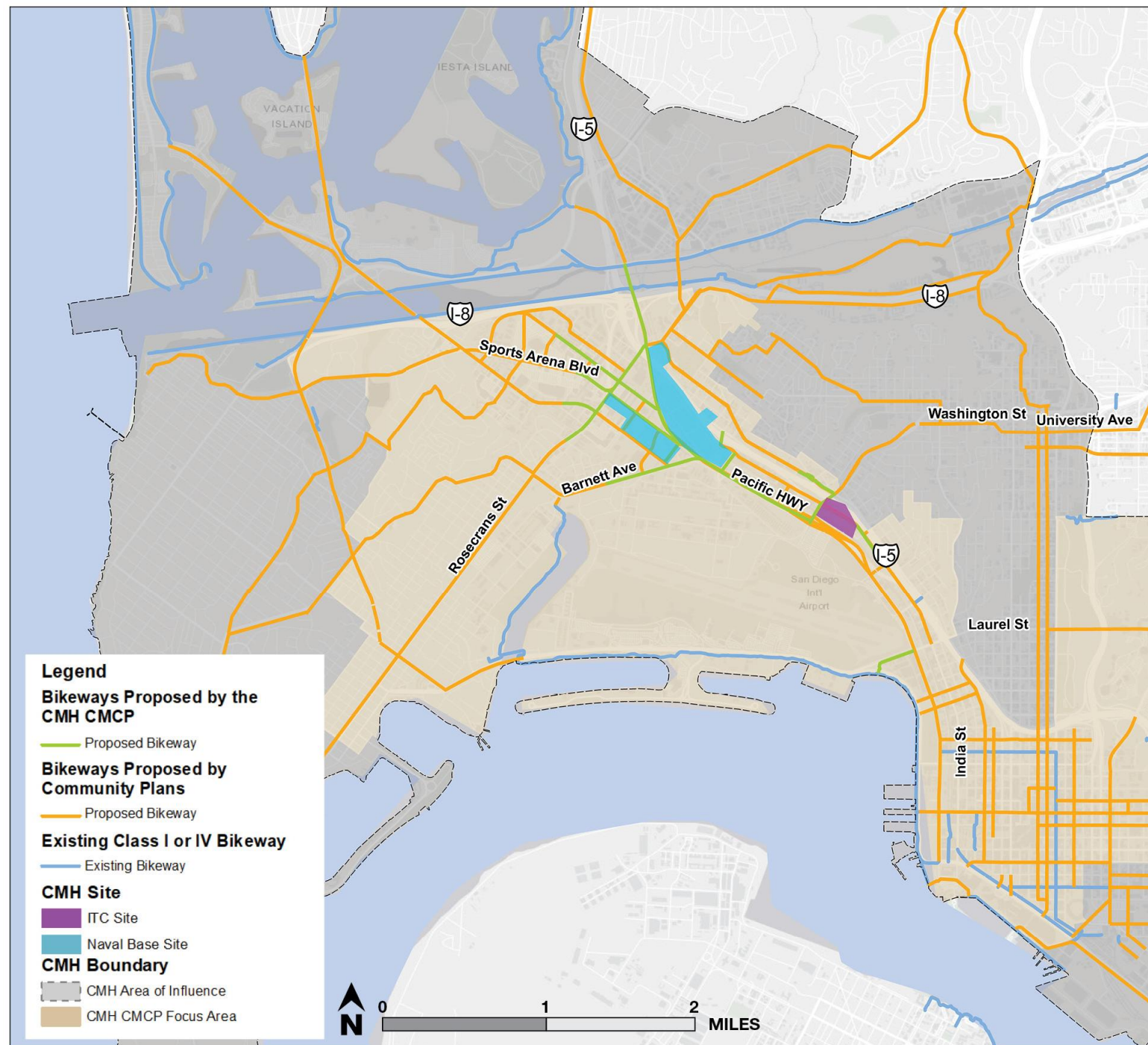
Active Transportation Strategies

Bikeways Proposed by Community Plans



Active Transportation Strategies

Bikeways Proposed by the CMH and Connections CMCP

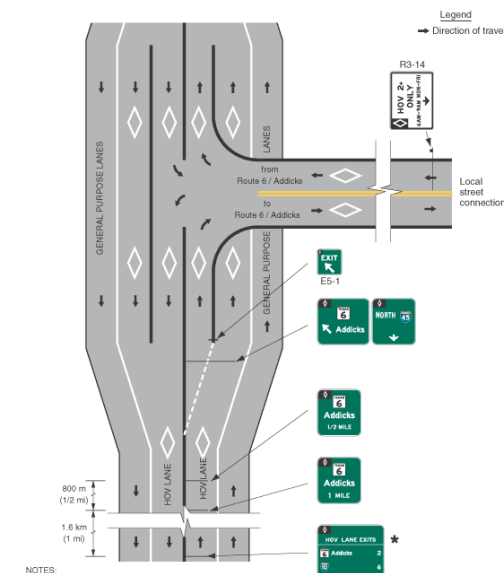
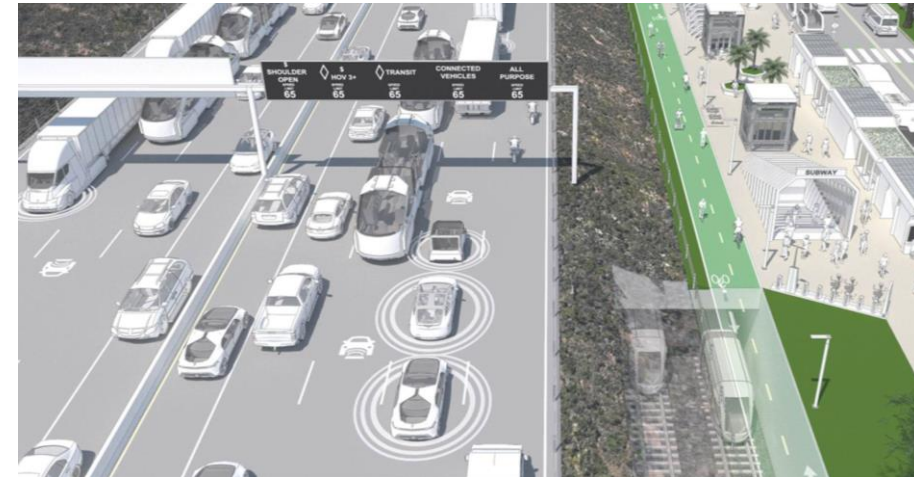


How well do these active transportation strategies address your concerns?



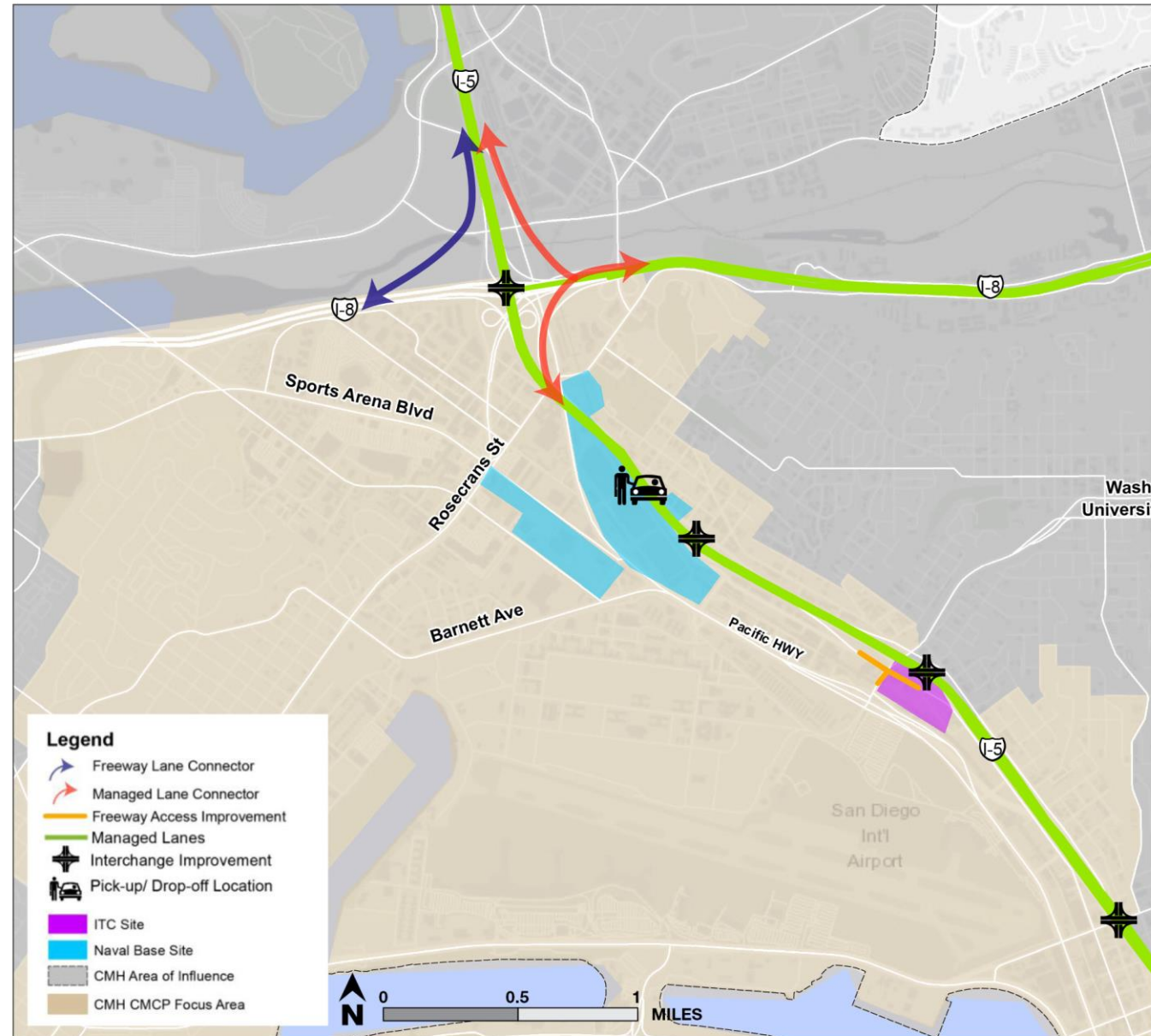
Freeway Strategies – Key Concepts

- **Managed Lane:** freeway lane separated from general purpose lanes that can be dedicated to specific uses at various times of day based on response to changing conditions on the road
 - Include HOV, HOT, or transit lanes
- **Direct Access Ramp:** ramp that allows direct access from the center of the freeway (Managed Lane)



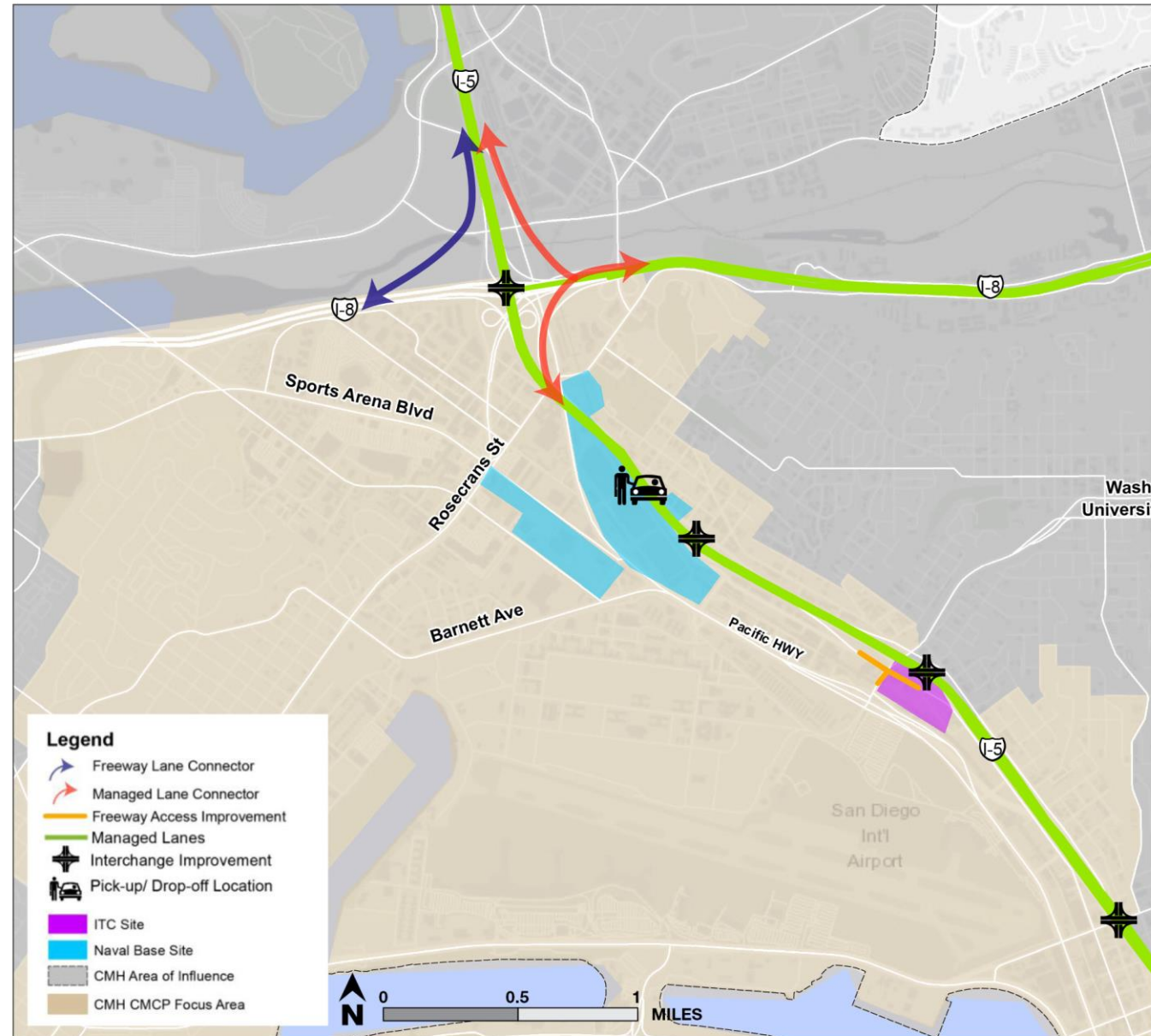
Freeway Strategies

- **Managed lanes on I-5 and I-8**
- **Managed lanes connectors between I-5 and I-8**
 - Managed Lanes
 - Freeway Connectors
- A new interchange and reconfigured Old Town Interchange
- Direct Access Ramps to pick-up/drop-off area at Central Mobility Hub
- Interchange improvement at Intermodal Transportation Center
 - Accommodates two-way traffic along Kettner Boulevard, between Vine Street and Washington Street
- Other operational improvements and ramp modifications to I-5 and I-8



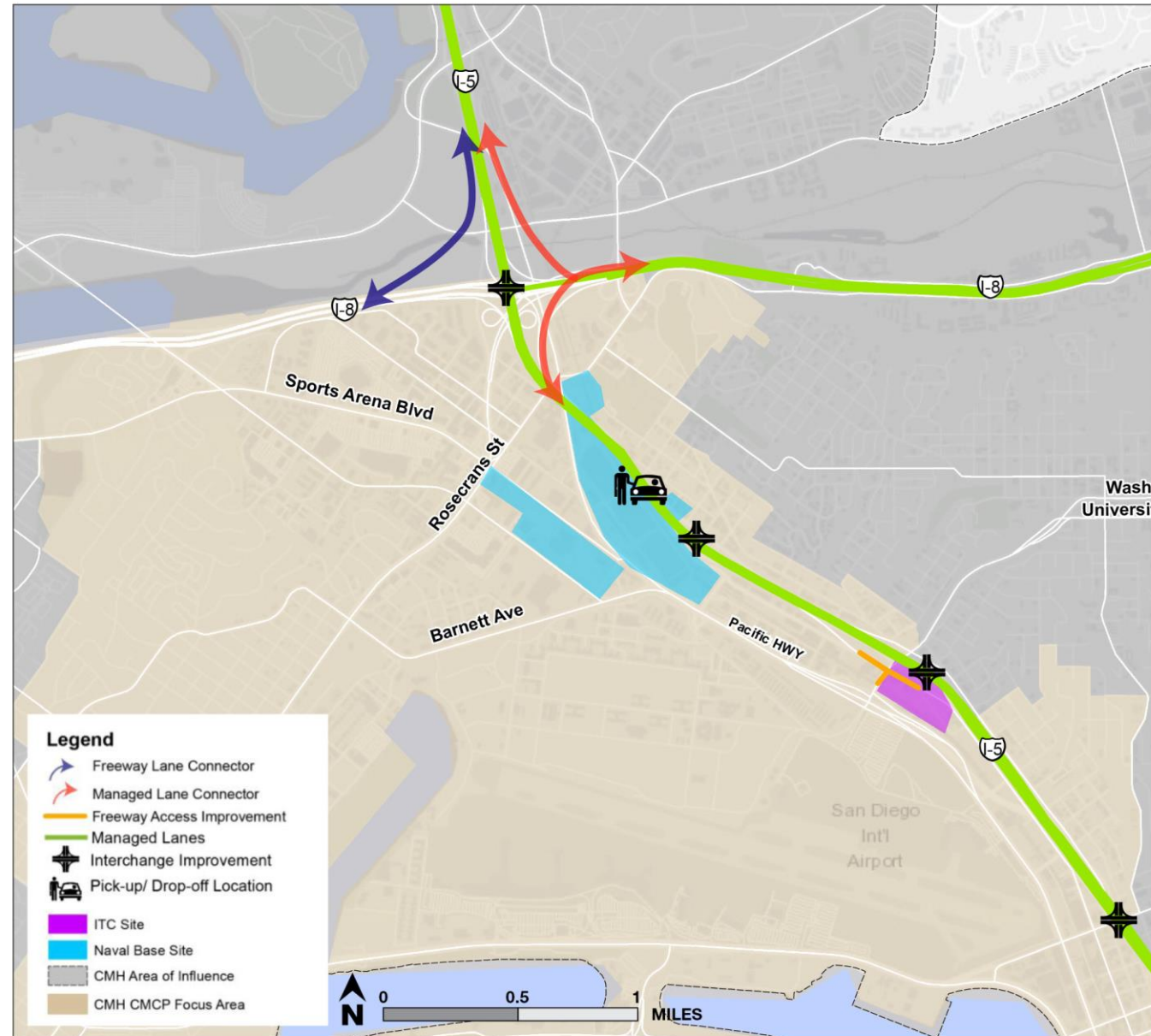
Freeway Strategies

- Managed lanes on I-5 and I-8
- Managed lanes connectors between I-5 and I-8
 - Managed Lanes
 - Freeway Connectors
- New interchange and reconfigured Old Town Interchange**
- Direct Access Ramps pick-up/drop-off area at Central Mobility Hub**
- Interchange improvement at Intermodal Transportation Center
 - Accommodates two-way traffic along Kettner Boulevard, between Vine Street and Washington Street
- Other operational improvements and ramp modifications to I-5 and I-8



Freeway Strategies

- Managed lanes on I-5 and I-8
- Managed lanes connectors between I-5 and I-8
 - Managed Lanes
 - Freeway Connectors
- A new interchange and reconfigured Old Town Interchange
- Direct Access Ramps to pickup/drop-off area at Central Mobility Hub
- **Interchange improvement at Intermodal Transportation Center**
 - Accommodates two-way traffic along Kettner Boulevard, between Vine Street and Washington Street
- **Other operational improvements and ramp modifications to I-5 and I-8**



How well do these freeway strategies address your concerns?



Transit Strategies – Key Concepts

- **Next Gen *Rapid*:** SANDAG's vision for new bus services, deploying Bus *Rapid* Transit type service in more comfortable, high-tech vehicles
- **Dedicated Transit Lanes:** roadway lanes that are for bus only, either all day or at specific times of day
 - Can be side-running or median-running
- Preparing network for new commuter and light rail service



Transit Strategies

- **Next Gen *Rapid***

- Provides an additional connection from Southeast County to Downtown San Diego and to the Central Mobility Hub
- Side-running or median-running dedicated Bus *Rapid* Transit lanes along Sports Arena Boulevard and Rosecrans Street will allow travelers to reach their destinations more quickly and efficiently

- **Transit Leap**

- North-south and east-west Transit Leap connections to provide high-speed rail service to commuters for longer regional trips

- **Light Rail**

- New tram services and improved light rail services with higher frequencies, expanded service times, and faster travel times



Source: Dan Malouff



Transit Strategies

- *Next Gen Rapid*
 - Provides an additional connection from Southeast County to Downtown San Diego and to the Central Mobility Hub
 - Side-running or median-running dedicated *Bus Rapid* Transit lanes along Sports Arena Boulevard and Rosecrans Street will allow travelers to reach their destinations more quickly and efficiently

- **Transit Leap**
 - North-south and east-west Transit Leap connections to provide high-speed rail service to commuters for longer regional trips

- **Light Rail**
 - New tram services and improved light rail services with higher frequencies, expanded service times, and faster travel times

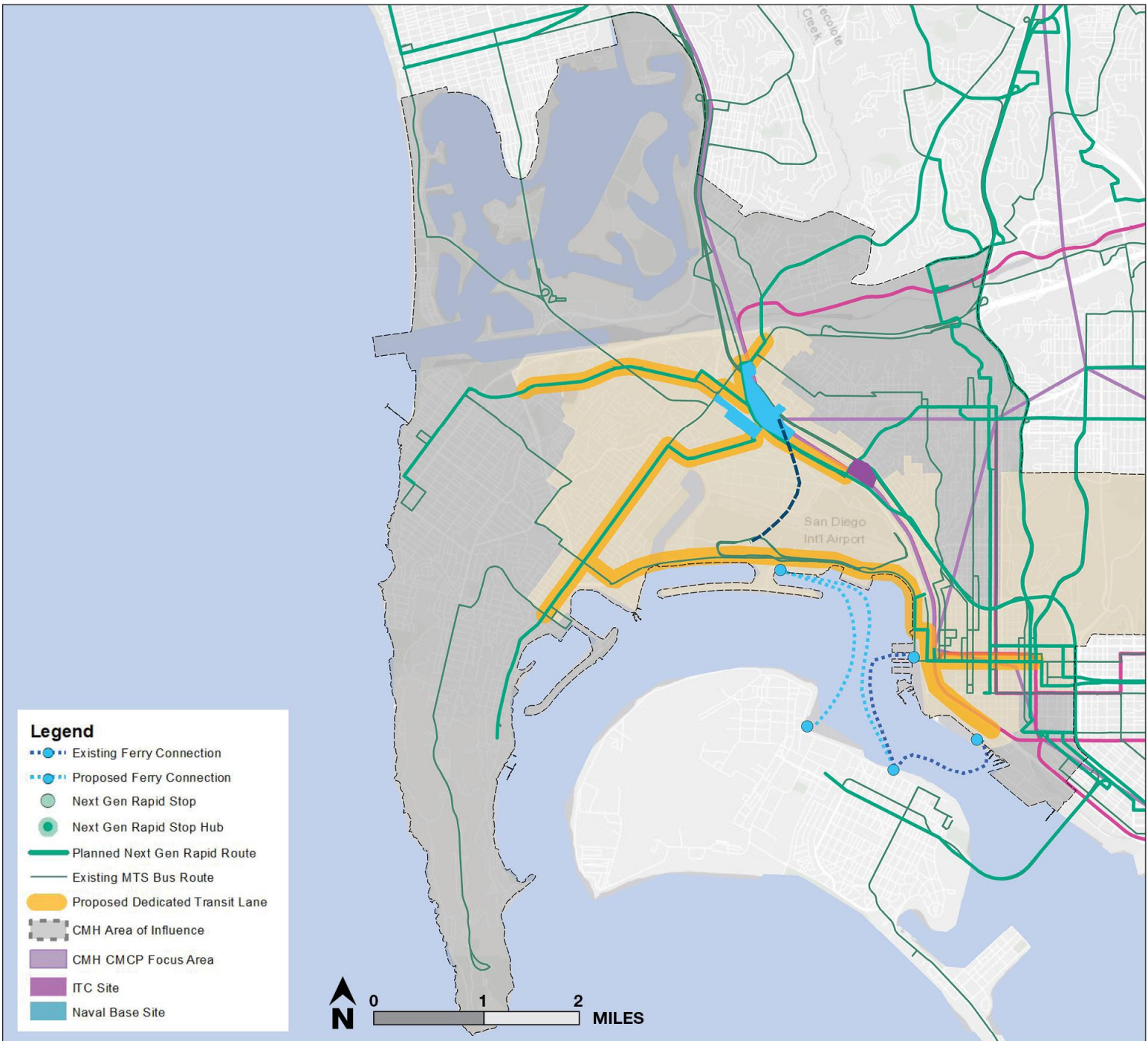
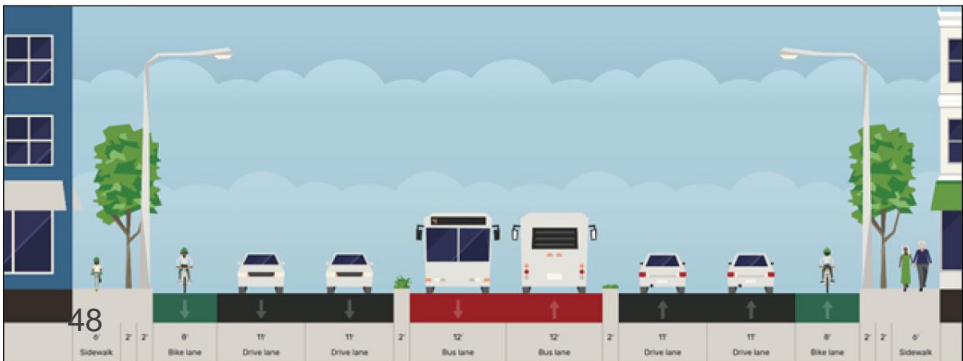


Transit Strategies

- *Next Gen Rapid*
 - Provides an additional connection from Southeast County to Downtown San Diego and to the Central Mobility Hub
 - Side-running or median-running dedicated *Bus Rapid* Transit lanes along Sports Arena Boulevard and Rosecrans Street will allow travelers to reach their destinations more quickly and efficiently
- **Transit Leap**
 - North-south and east-west Transit Leap connections to provide high-speed rail service to commuters for longer regional trips
- **Light Rail**
 - New tram services and improved light rail services with higher frequencies, expanded service times, and faster travel times



Transit Strategies



How well do these transit strategies address your concerns?



Mobility Hub and Flexible Fleet Strategies – Key Concepts

- **Regional Hubs:** areas identified by SANDAG from data-driven analysis, calling for enhanced micro-mobility options and amenities
- **Neighborhood Hubs:** smaller areas catered to local mobility needs, supporting first- and last-mile connections, and short 15-minute trips
 - Includes **Flexible Fleet Services**, which are small vehicles offering mobility-on-demand trips within a dedicated zone
- **Stop Hubs:** transit stops connecting other modes (such as bike paths), where multimodal amenities are offered



Mobility Hub and Flexible Fleet Strategies

- **Regional Hubs**

- The Central Mobility Hub will serve as the anchor of the regional mobility hub

- **Neighborhood Hubs**

- Enhanced first- and last- mile connections to fixed-route transit in areas with high densities of transit service including the Sports Arena Development and the Uptown and Downtown communities
 - Will accompany connections provided at the anchor hub to facilitate the “15-minute city concept”

- **Next Gen *Rapid* Stop Hubs**

- Enhanced transit stop waiting experience for passengers
 - Additional mobility alternatives including bike share, scooter share, and complimentary Wi-Fi



Mobility Hub and Flexible Fleet Strategies

- Regional Hubs
 - The Central Mobility Hub will serve as the anchor of the regional mobility hub
- **Neighborhood Hubs**
 - Enhanced first- and last- mile connections to fixed-route transit in areas with high densities of transit service including the Sports Arena Development and the Uptown and Downtown communities
 - Will accompany connections provided at the anchor hub to facilitate the “15-minute city concept”
- Next Gen *Rapid Stop* Hubs
 - Enhanced transit stop waiting experience for passengers
 - Additional mobility alternatives including bike share, scooter share, and complimentary Wi-Fi



Source: City of Orlando



Mobility Hub and Flexible Fleet Strategies

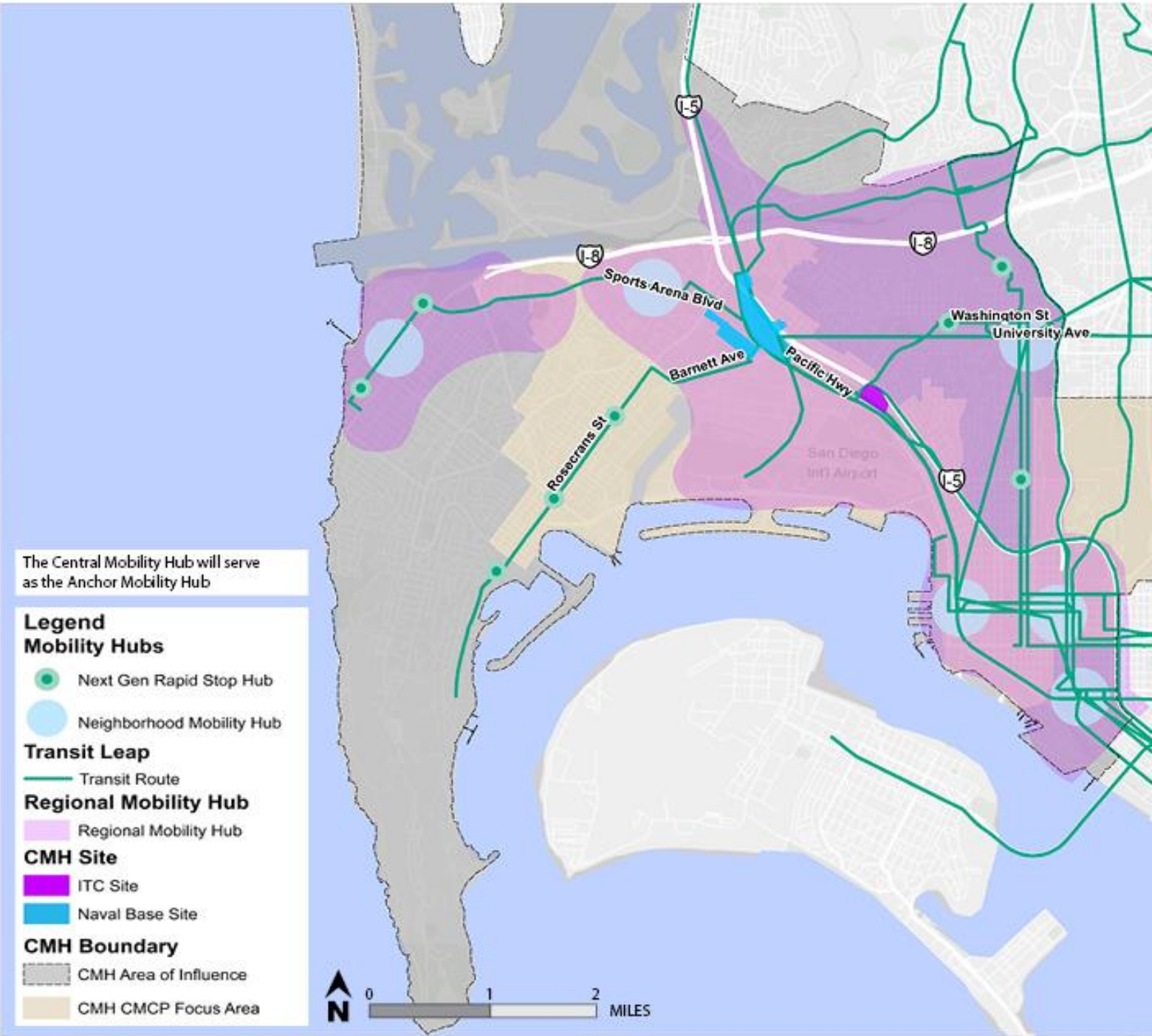
- Regional Hubs
 - The Central Mobility Hub will serve as the anchor of the regional mobility hub
- Neighborhood Hubs
 - Enhanced first- and last- mile connections to fixed-route transit in areas with high densities of transit service including the Sports Arena Development and the Uptown and Downtown communities
 - Will accompany connections provided at the anchor hub to facilitate the “15-minute city concept”
- **Next Gen *Rapid Stop* Hubs**
 - Enhanced transit stop waiting experience for passengers
 - Additional mobility alternatives including bike share, scooter share, and complimentary Wi-Fi



Source: LinkNYC



Mobility Hub and Flexible Fleet Strategies



How well do these Mobility Hub and Flexible Fleet strategies address your concerns?



Polling Questions

Polling Question:

- What would it take for you to use transit for everyday trips?
 - ☐ Increased frequency
 - ☐ Faster travel times
 - ☐ Enhanced station amenities
 - ☐ Reduced fares
 - ☐ More choices in modes of transportation
 - ☐ Greater span of services
 - ☐ Direct routes to where I need to go
 - ☐ More comfortable transit vehicles
 - ☐ Feeling safer on transit
 - ☐ Other (please post in Q&A)

Polling Question:

- If you are able to ride a bike, what would it take for you to consider riding a bike for everyday trips?
 - ☐ Safe bikeways
 - ☐ Comfortable bikeways
 - ☐ More route/destination choices
 - ☐ Public access to e-bikes
 - ☐ Bike share program
 - ☐ Secure bike parking
 - ☐ Other (please post in Q&A)

Questions and Answers

Next Steps

Milestones and Timeline



Fall 2020 – Winter 2020/2021	• Develop Central Mobility Hub concepts
December 8, 2020	• Community Roundtable 1
March 11, 2021	• Public Workshop 1
Early 2021	• Evaluate multimodal connections to concepts
May 25, 2021	• Community Roundtable 2
June 7, 2021	• Public Workshop 2
Summer/Fall 2021	• Prepare Draft Report
Fall 2021	• Submit Final Report

Public Engagement Opportunities

- Stay informed and provide feedback via our virtual engagement site
- Comments and survey responses will be accepted through **June 18, 2021**
- Draft plan will be available for review on virtual engagement site

Scan to visit the CMH and Connections
CMCP virtual engagement site!



SANDAG and Caltrans
are committed to keeping
communities informed

Danny Veeh

SANDAG Project Manager
danny.veeh@sandag.org

Nicola Bernard

Caltrans Project Manager
nicola.bernard@dot.ca.gov



sandag.org/CMCP



CMCP@sandag.org



Call (888) 317-8976 | Text (844) 569-0570



CMH Virtual Engagement Hub
sandag.mysocialpinpoint.com/cmhandconnections



SANDAGregion | SDCaltrans



SANDAGregion | SDCaltrans



SANDAGregion | CaltransVideo



SANDAG | SDCaltrans