



---

# TRANSPORTATION MASTER PLAN

---

GALLUP, NEW MEXICO

---

**PUBLIC MEETING #1**  
Monday, March 13, 2023

# Introductions

Welcome All!



**Bohannon**  **Huston**

# Agenda

- What is a Transportation Master Plan?
- Benefits of a Transportation Master Plan
- Other Planning Initiatives and Significant Transportation Projects
- Vision and Goals Exercise
- Existing Conditions Overview
- Mapping Activities
- Meeting Wrap Up

# What is a Transportation Master Plan?

- Establishes a long-range vision for the City of Gallup's transportation system over the next 20+ years
- Outlines transportation challenges and opportunities across the City of Gallup
  - Growth scenarios
    - Travel demand modeling (2040)
  - Bicycle and pedestrian facilities
  - Access to major destinations including parks, schools, etc.
  - Regional connections
- Identifies transportation priorities and investments
  - Project list with planning-level cost estimates

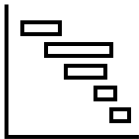
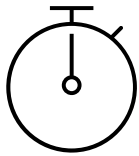
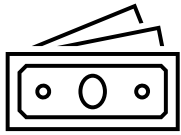


# A Transportation Master Plan is not...

- A predictor of the future
- Inflexible
- A roadway design manual
- Tool for fixing intersections, signals, potholes, ...



# Benefits



- Increased Access to Funding
- Phasing of roadway improvements
- Ability to better plan for multimodal infrastructure
- Coordinate with other regional initiatives
- Inform development patterns
- Inform the Growth Management Master Plan

# Growth Management Master Plan

- Stakeholder Committee
- Coordinated Team
  - BHI/DPS
- Public Input



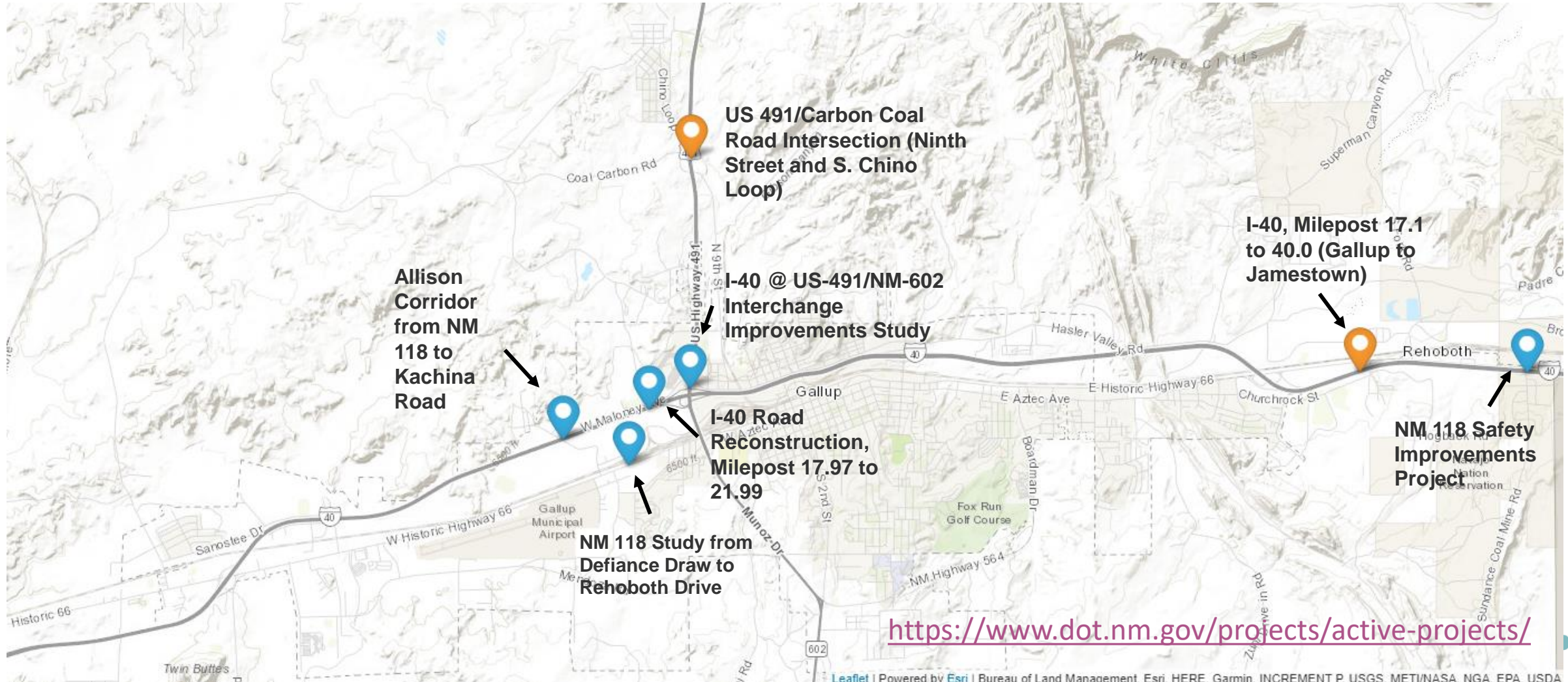
## WHAT IS THE GROWTH MANAGEMENT MASTER PLAN?

The Growth Management Master Plan is a planning document that provides guidance for how the City should develop in the next 20 years. The Growth Management Master Plan provides a snapshot of the existing conditions and a background of Gallup's history. The plan sets the overall vision of Gallup and what the community aspires to be in the future. It provides a realistic action plan through specific goals and policies that prioritize community values. The plan addresses the following topics:

- Land Use
- Transportation
- Urban Design
- Economic Development
- Parks, Recreation, and Open Space
- Housing
- Water
- Utilities
- Hazard Mitigation



# Significant Transportation Projects





## WHAT WILL BE IN THE TMP?

A **Goals and Priorities** section which outlines the transportation-related goals established by the City.

A **Community Engagement** section which summarizes the outreach efforts related to the TMP planning process.

An **Existing Conditions** section which details the current demographics of Gallup residents, the existing transportation network, and the location and number of crashes that have occurred within the City.

A **Travel Demand Modeling** section which explores future travel demand scenarios within Gallup.

A **Project Prioritization** section which establishes the order of implementation for various transportation projects.

A **Funding Sources** section which identifies various sources of available funding for transportation projects.

A **Recommendations** section which details the typical sections and roadway design standards to be utilized in future transportation projects.

# Elements of the TMP

# Instructions

Go to  
**[www.menti.com](https://www.menti.com)**

Enter the code  
**4493 6078**



Or use QR code

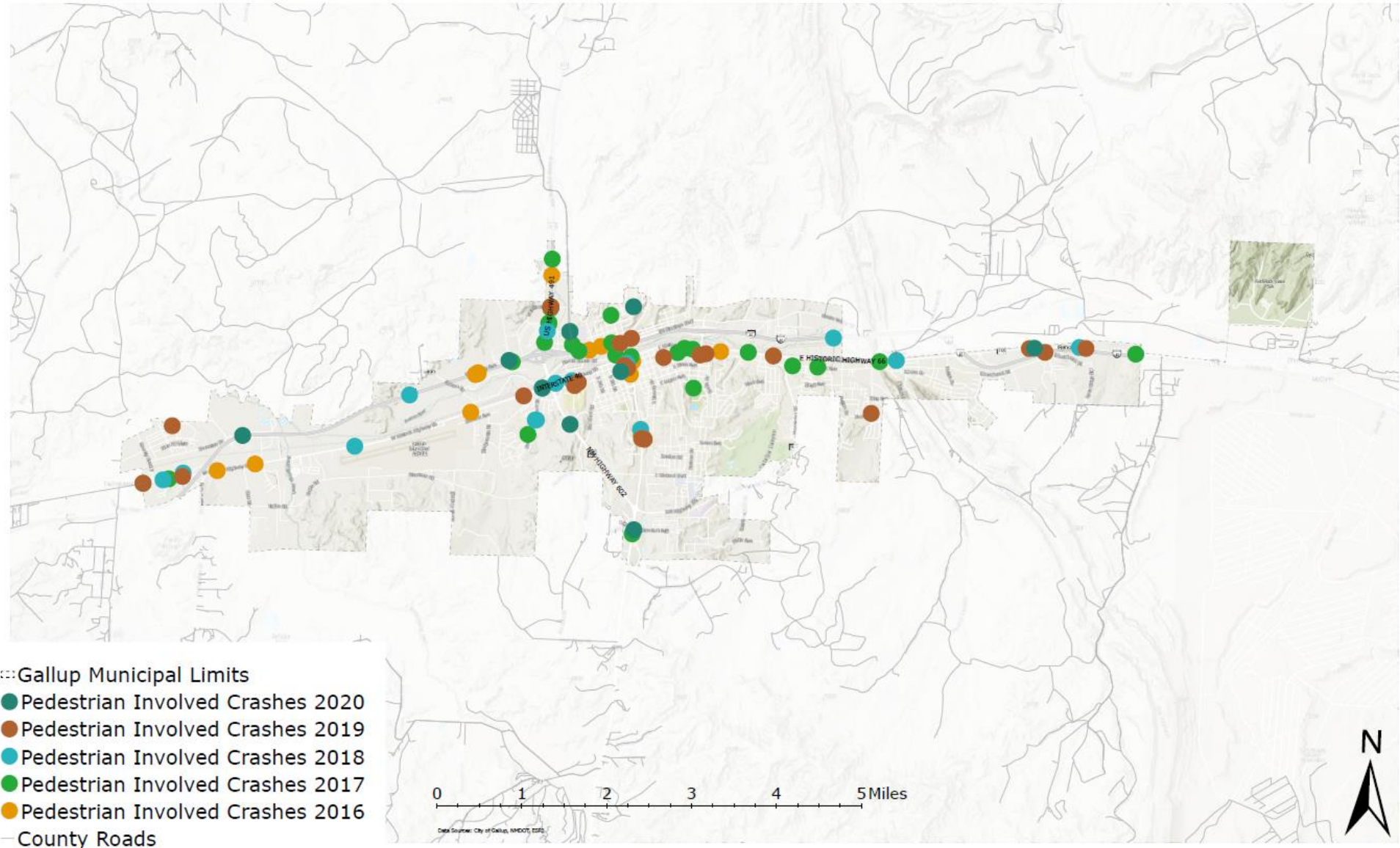
# Existing Conditions

Overview

# Existing Conditions Analysis

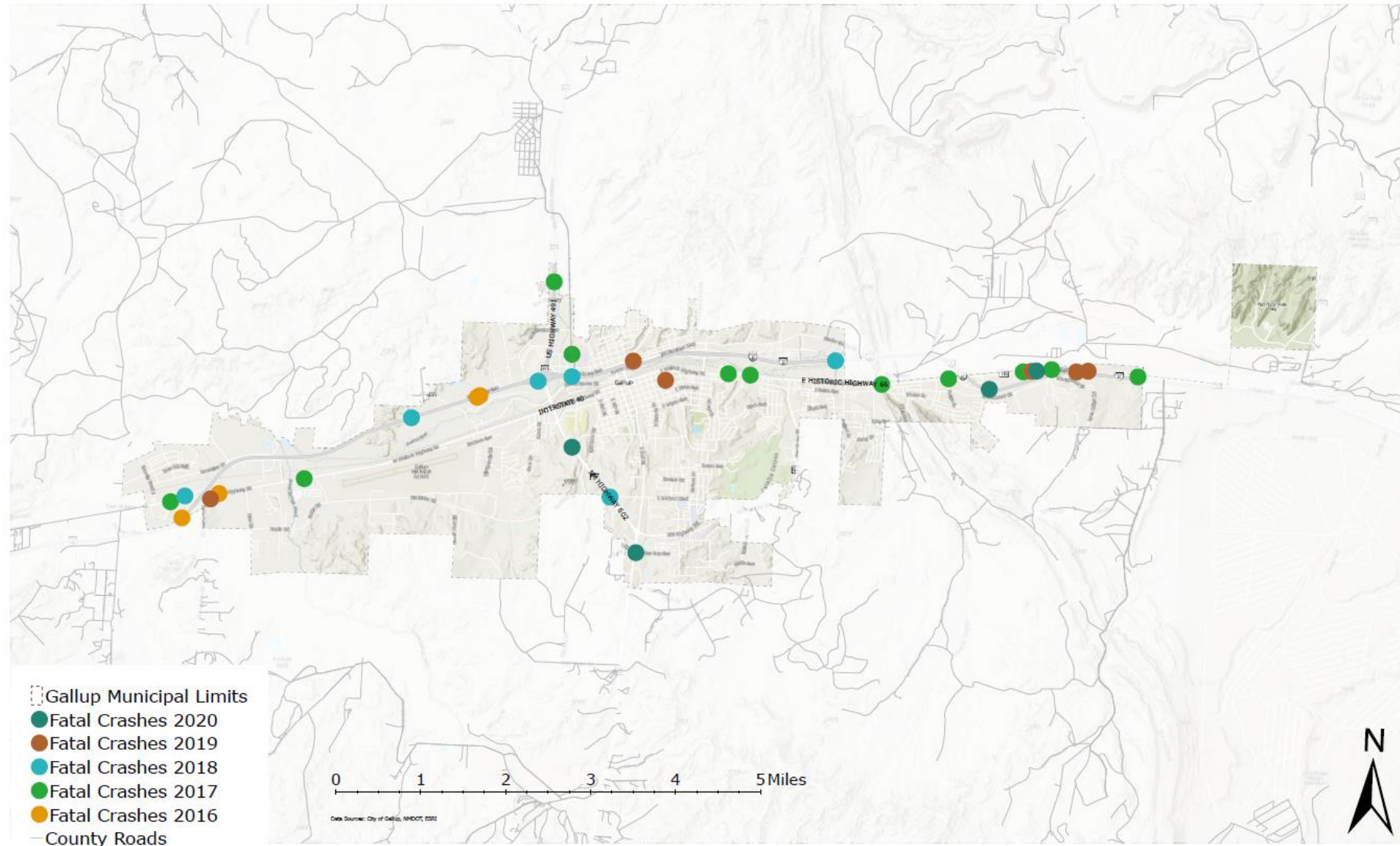
- Initially focused on quantitative data and adopted policy...
  - Traffic Counts (NMDOT)
  - Crash data (NMDOT)
  - Road Centerline data (Gallup)
  - Functional Classification (Gallup)
  - Pedestrian Facilities (Gallup/BHI)
  - Land Use / Zoning (Gallup)
- Here today to collect your data – your lived experience to expand and calibrate the measured data

# Pedestrian Involved Crashes

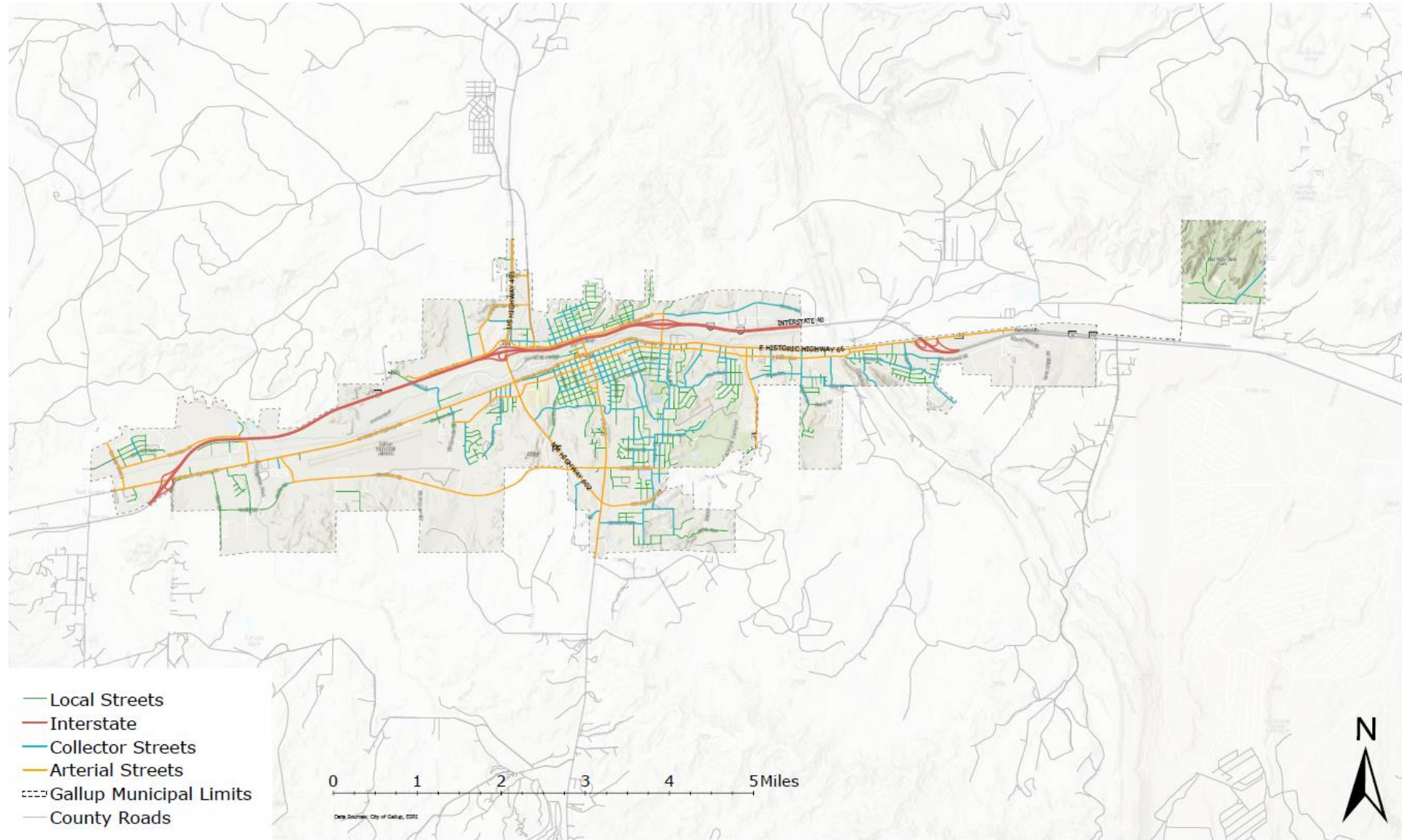




# Fatal Crashes

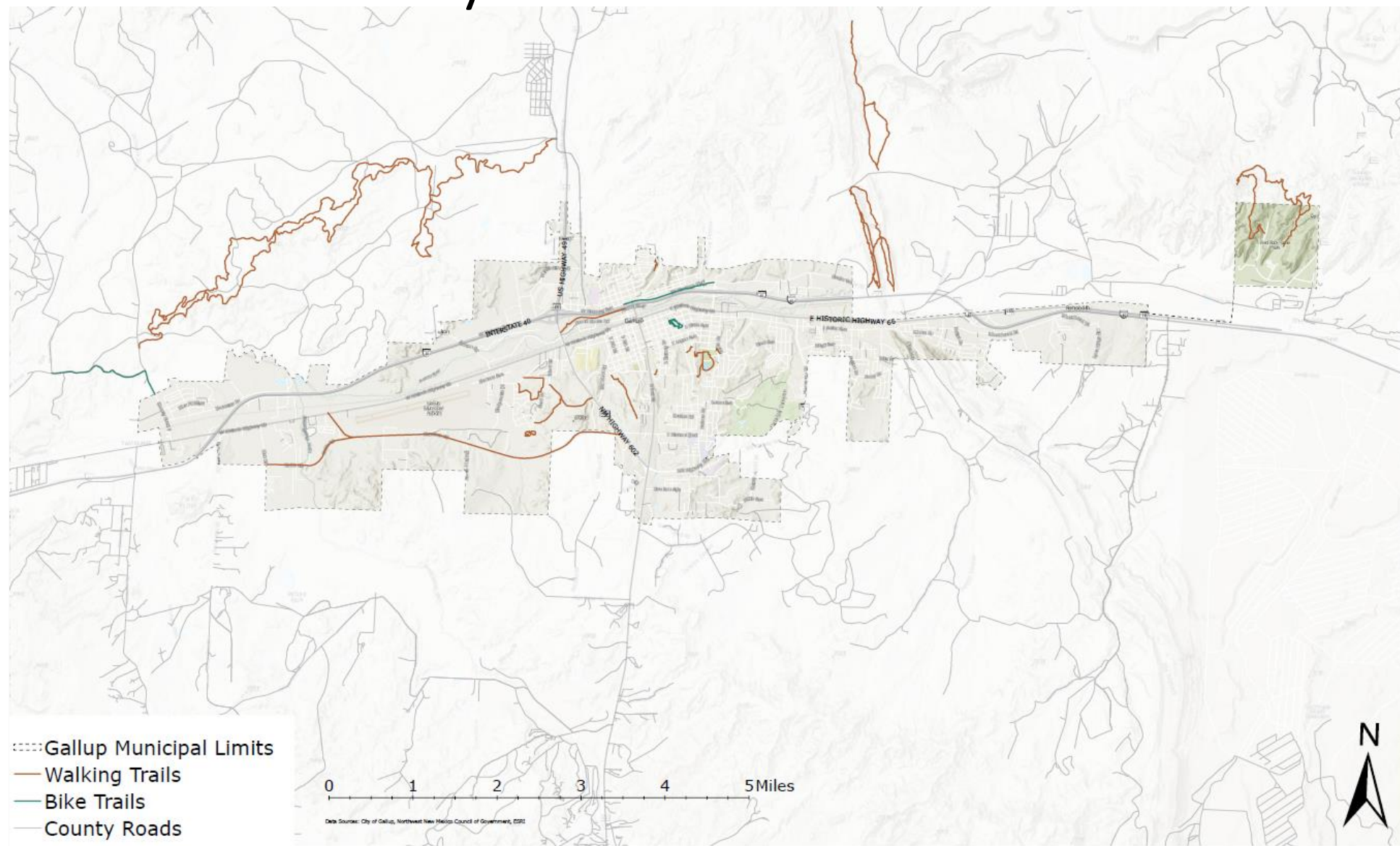


# Functional Classification





# Trails and Bicycle Facilities



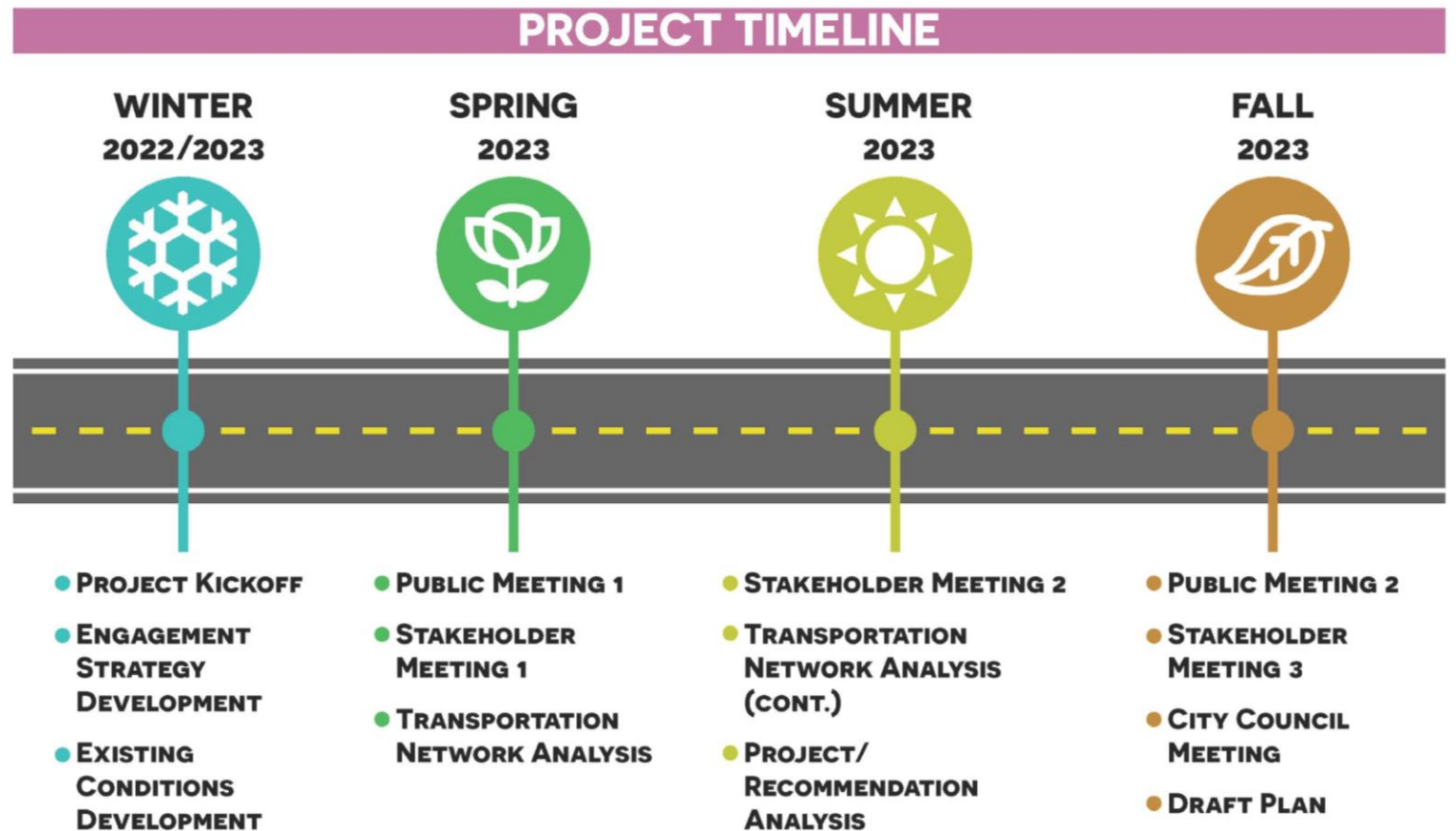
# Mapping Activities

Grab your art supplies!

# Wrap Up

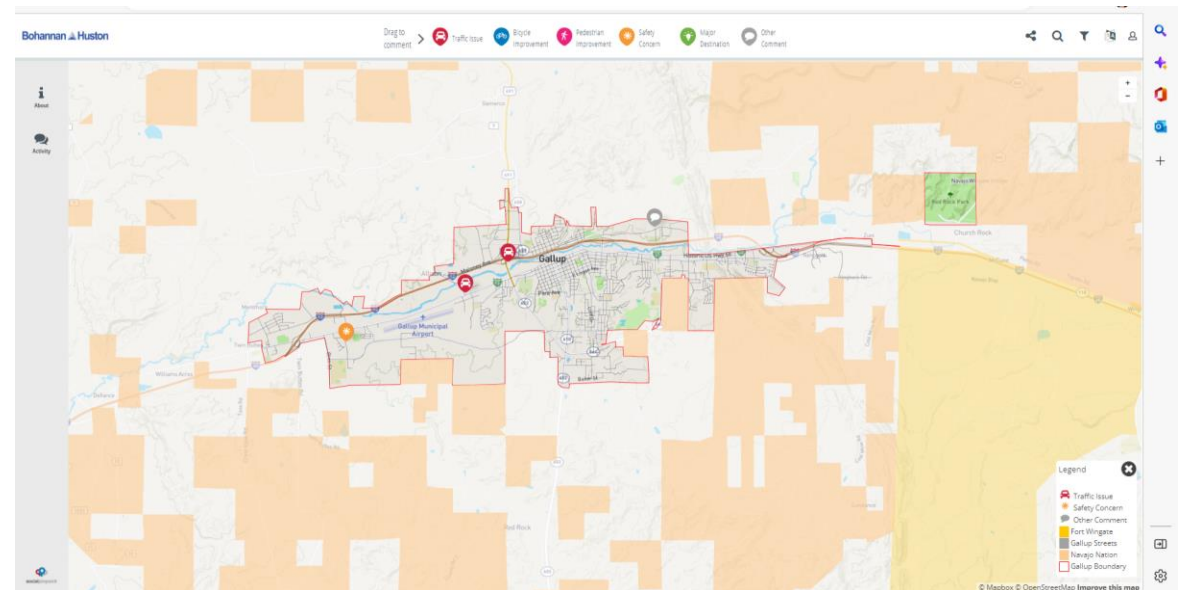
Recap of the meeting

# Next Steps



# Continued Input

- Project Website:
  - <https://bhi.mysocialpinpoint.com/gallup-transportation-master-plan>
- Email: [GallupTMP@bhinc.com](mailto:GallupTMP@bhinc.com)
- Phone Number: (505) 264-0111







**Thank You!**

**Derrick Webb, AICP**  
Project Manager  
[dwebb@bhinc.com](mailto:dwebb@bhinc.com)  
303-799-5103

**Maggie Ramirez**  
Planner  
[mramirez@bhinc.com](mailto:mramirez@bhinc.com)  
505.798.7837

# Additional Slides for Discussion

If needed



# Significant Transportation Projects

- US 491/Carbon Coal Road Intersection [Construction]
  - Roadway reconstruction and rehabilitation and lighting and signalization.
  - Cost: \$23,850,000.00
- I-40 @ US-491/NM-602 Interchange Improvements Study
  - identify alternatives to improve traffic flow and traffic and pedestrian safety at the I-40 @ US-491/NM-602 interchange in Gallup. Alternatives being explored include optimization of traffic signals, changes to ramp configurations, and reductions of signalized intersections through various combinations of roundabouts and frontage roads.
- I-40 Road Reconstruction, Milepost 17.97 to 21.99
  - The NMDOT project team is currently developing roadway design plans for the reconstruction of Interstate-40 near Gallup between mileposts 17.97 and 21.99.
- I-40, Milepost 17.1 to 40.0 (Gallup to Jamestown)
  - Metal Guardrail Installation. Replacement and upgrade is necessary to bring roadside barriers to new standards. Intent of the project is removal of existing guardrail and end sections and installation of new guardrail, leave outs and end sections on the mainline of I-40 eastbound and westbound, including traffic control during construction.

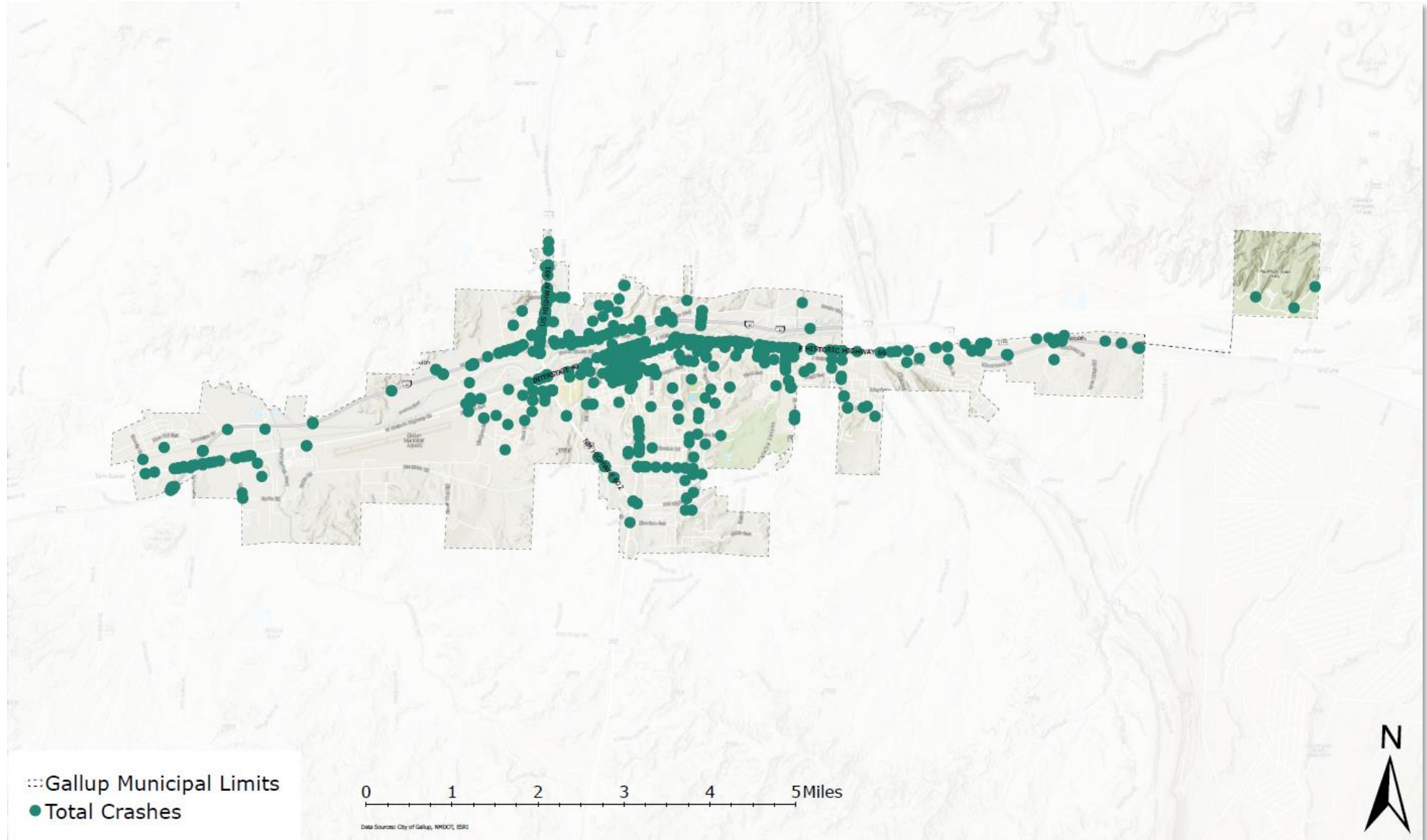
# Significant Transportation Projects

- Allison Corridor from NM 118 to Kachina Road
  - The current project involves preliminary engineering design of the next five phases of road improvements along Interstate 40 between NM 118 and Maloney Avenue as identified in the Allison Road Corridor and Interstate-40 Interchange Study completed in 2011. The five phases in design development include: A) Bridge over the BNSF Railway and NM 118; B) I-40 overpass; C) Allison Road Connection to Acoma Street and Maloney Avenue; D) Allison Road connection to Kachina Road; and E) Construction of an interchange at Allison Road and I-40.
- NM 118 Study from Defiance Draw to Rehoboth Drive
  - The design team is examining crash history, congestion, delays, gaps, and other safety-related issues, multimodal accessibility, and gathering public/stakeholder input on corridor conditions to help develop improvement alternatives. Once priorities are defined, design initiated, and funding identified, environmental documentation will be prepared.
- NM 118 Safety Improvements Project

The project area is located on NM 118 from Rehoboth Drive (milepost 26.7) to NM Highway 566 (milepost 30), near Gallup. This project is in design development. Proposed improvements include reconstruction of the roadway, addition of turn lanes, paved shoulders, street lighting, vegetation management, extension of drainage structures, and other improvements.

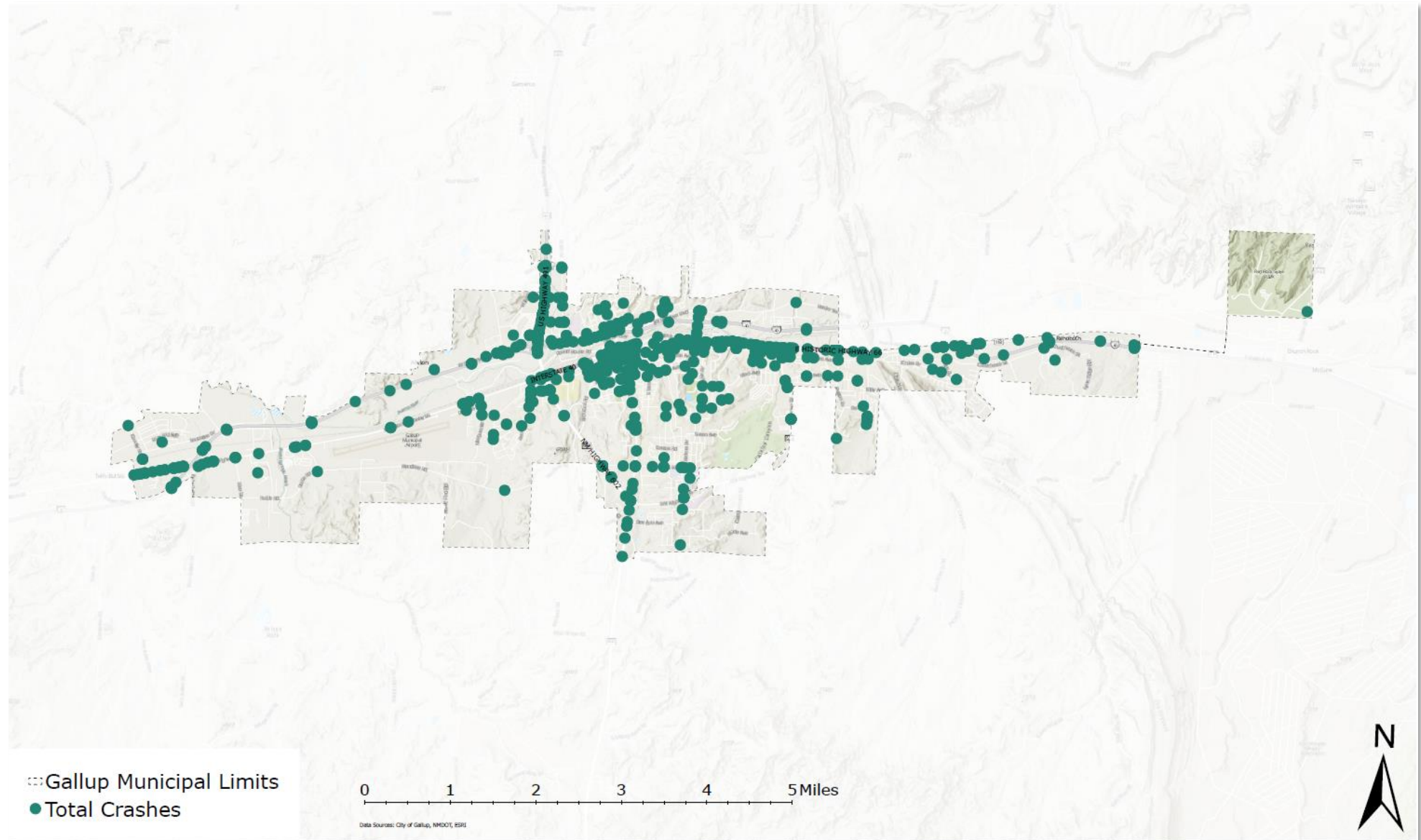
# Total Crashes

2016



# Total Crashes

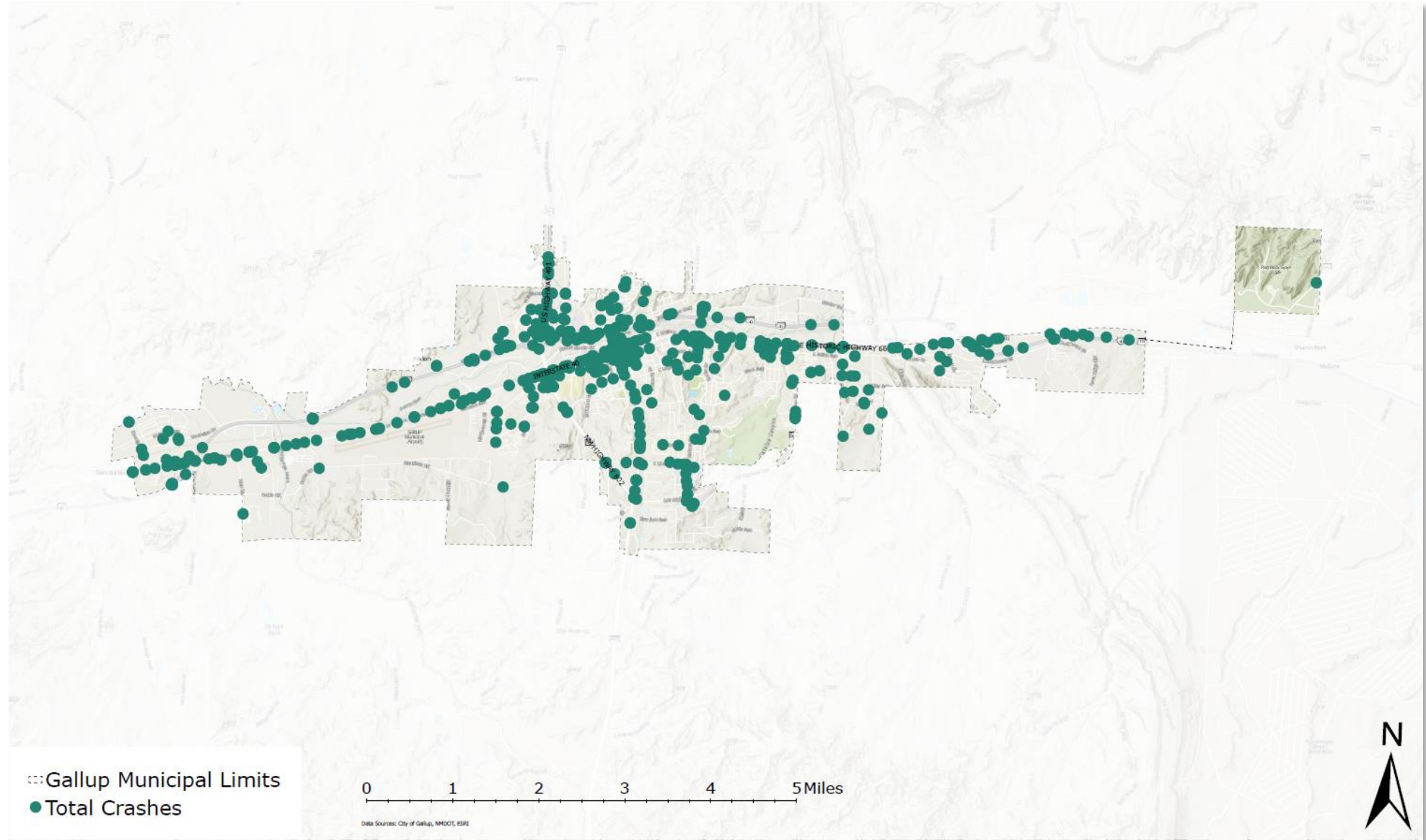
2017





# Total Crashes

2018



# Total Crashes

2019

