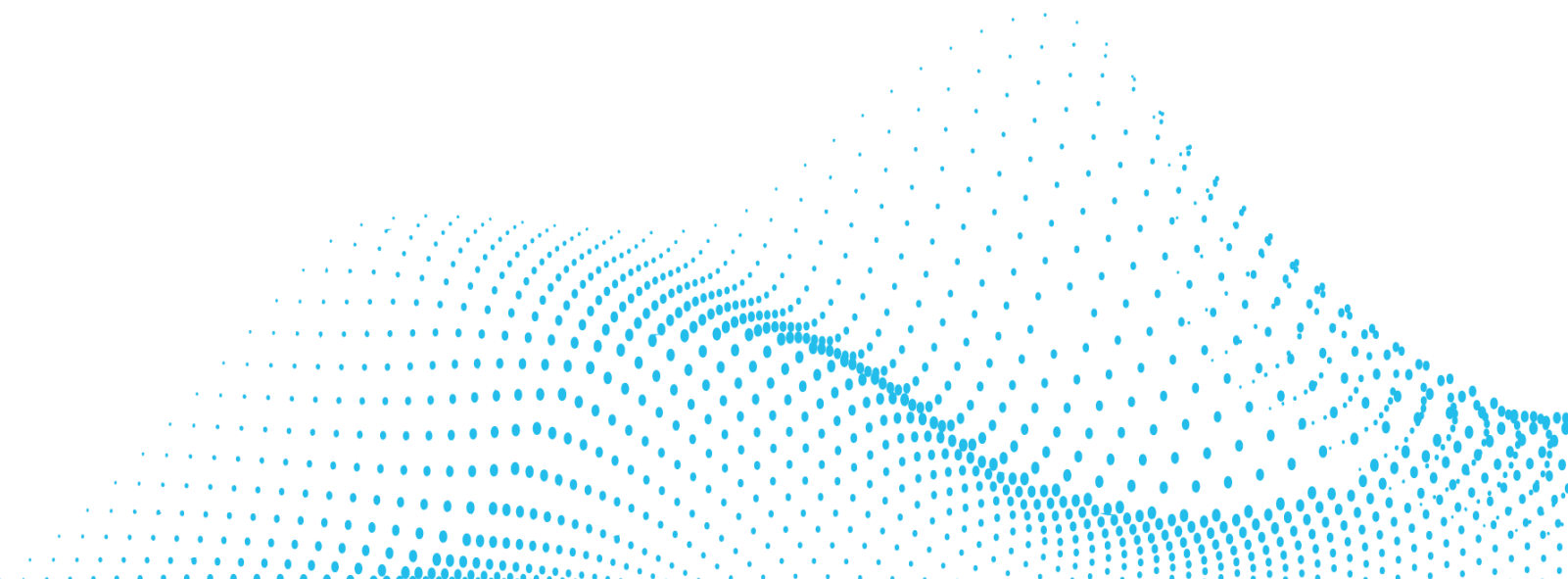




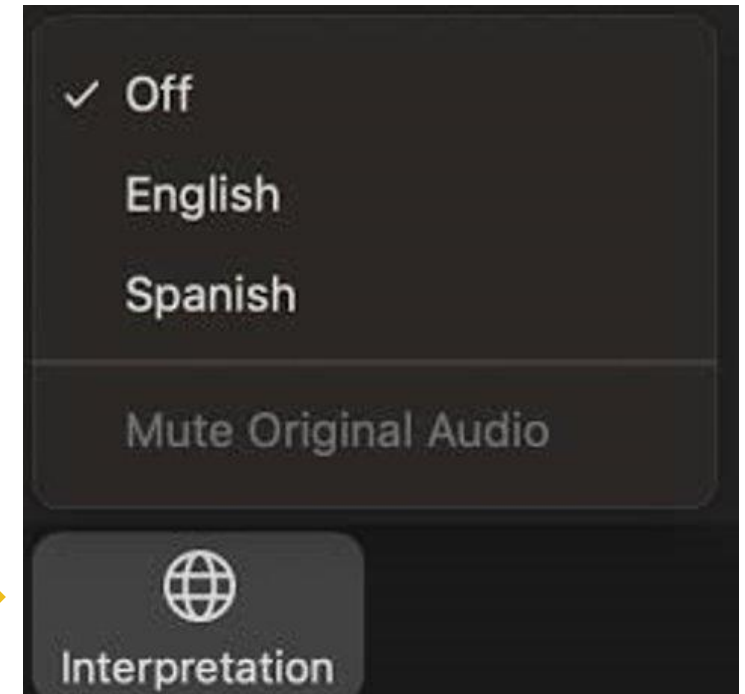
# Comprehensive Multimodal Corridor Plan (CMCP)

Virtual Public Meeting | July 8, 2021



# Este taller se llevará a cabo en español e inglés

- Para hacer uso del servicio de interpretación, favor de desplazarse a la parte inferior de la pantalla de Zoom (donde aparecen los controles)
- Haga clic en el ícono de interpretación (icono del mundo), y seleccione "Spanish" (español)
- Si está utilizando la aplicación móvil de Zoom (celular, tableta, etc.), presione los puntos suspensivos (...), luego "interpretation," y luego el idioma



# Meeting Logistics

- This meeting will be recorded
- Microphones will be muted during the presentation
- You may share comments and ask questions via the Q&A feature
- Opportunities to ask questions will be provided at the end of the presentation

# Welcome

**Hon. Paul McNamara**

*Mayor, City of Escondido*

*SANDAG Board Member*

A dark blue circular logo with the text "North County" in white. The word "North" is in a lighter blue color, and "County" is in white.

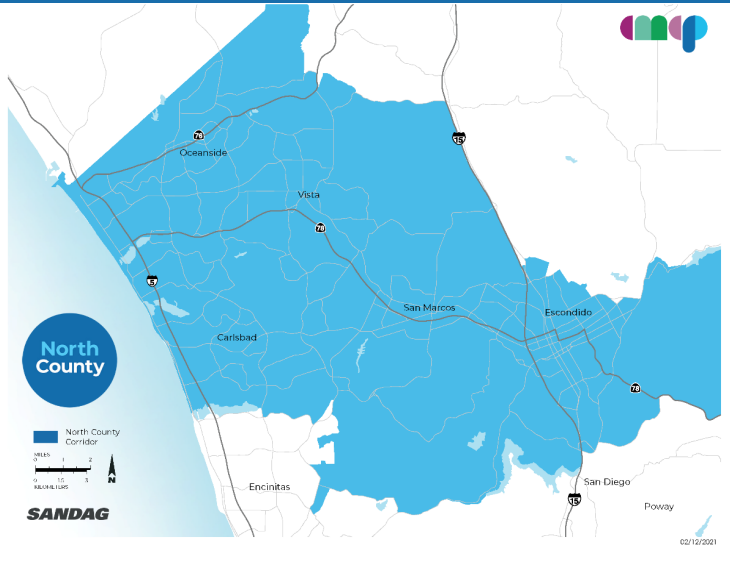
**North  
County**



# Polling Question

We'd like to know more about you. What is your connection to the study area?  
(Check all that apply)

- ☐ Live
- ☐ Work
- ☐ Own a business
- ☐ Visit for shopping/entertainment
- ☐ Attend school
- ☐ Visit recreational areas
- ☐ Other (please post in Q&A)



# Polling Question

How did you hear about this workshop? (Check all that apply)

- ☐ SANDAG website
- ☐ Virtual engagement hub
- ☐ Social media
- ☐ SANDAG e-blast
- ☐ Other electronic news source
- ☐ Newspaper advertisements
- ☐ Community group or organization
- ☐ Word of mouth
- ☐ Other (please post in Q&A)

# Meeting Overview

- ☐ 2021 Regional Plan
- ☐ CMCP Overview and Process
- ☐ North County Corridor Overview
- ☐ Virtual Engagement Hub
- ☐ North County CMCP Framework
- ☐ Question & Answer Discussion
- ☐ Next Steps



# 2021 Regional Plan



**North  
County**



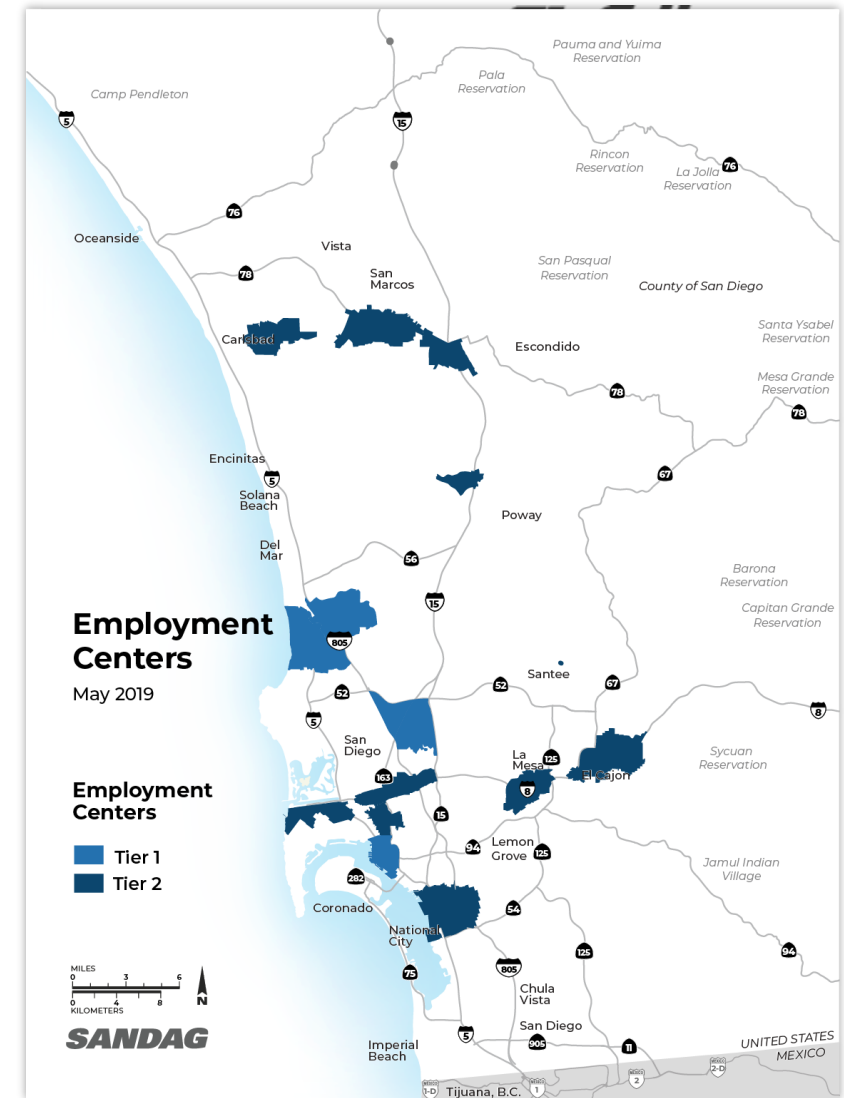
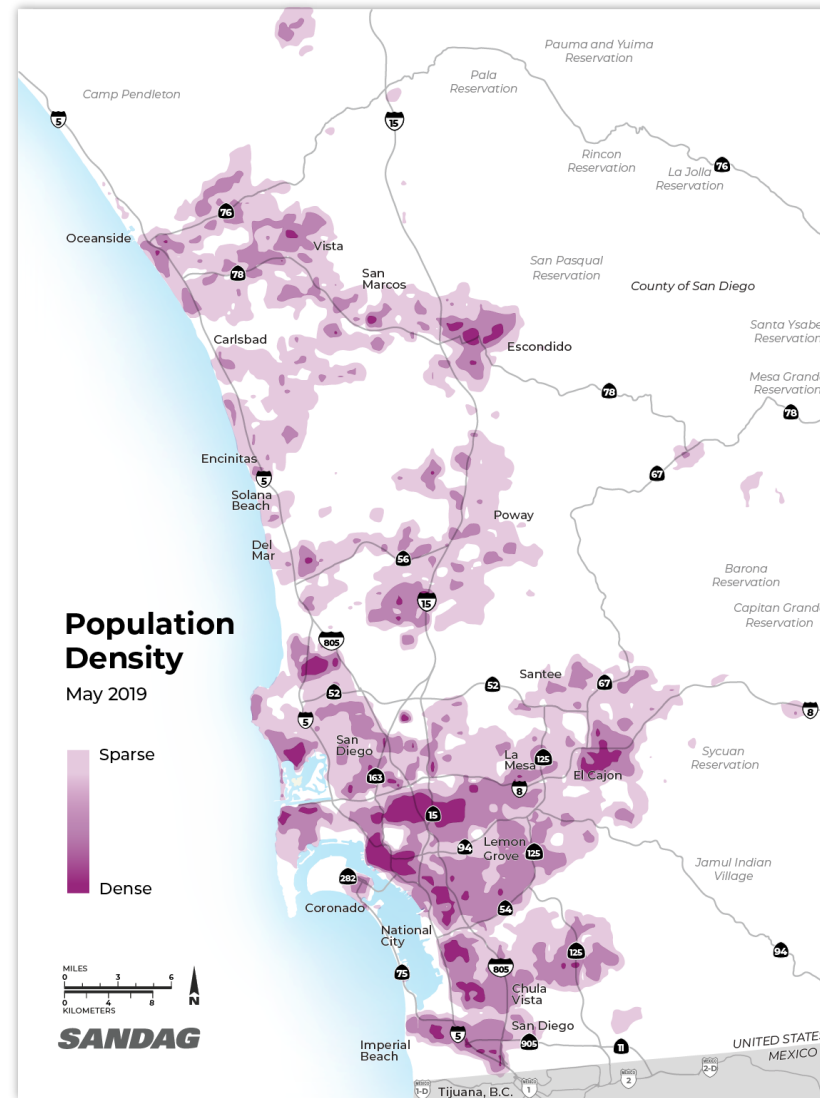


# A Vision for the 2021 Regional Plan



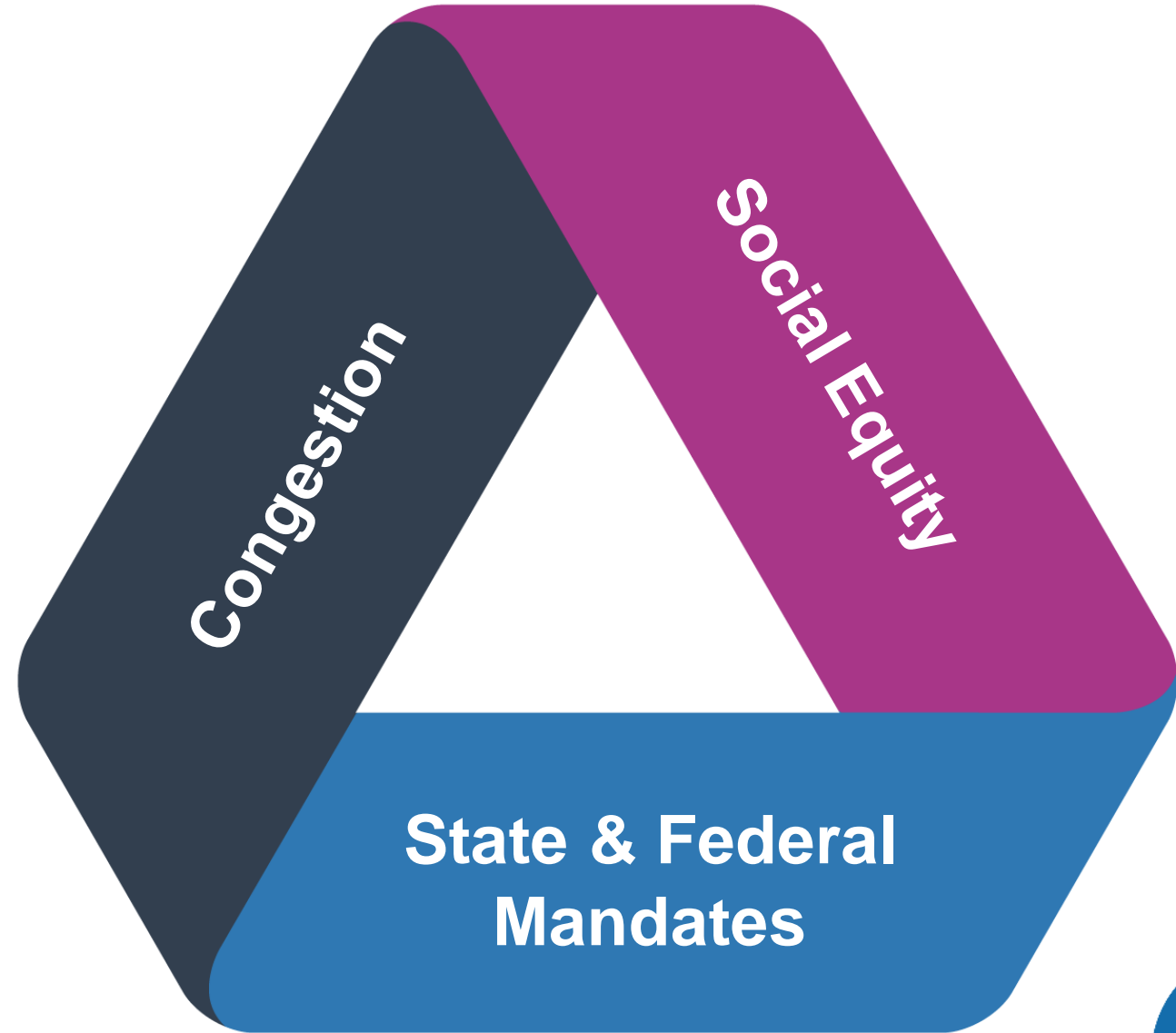
# Data-Driven Planning

Where people live and work



# Three Challenges

- Reduce **congestion**
- Improve **social equity**
- Meet **state and federal mandates** – to be *faster, fairer, and cleaner*



# 5 Big Moves

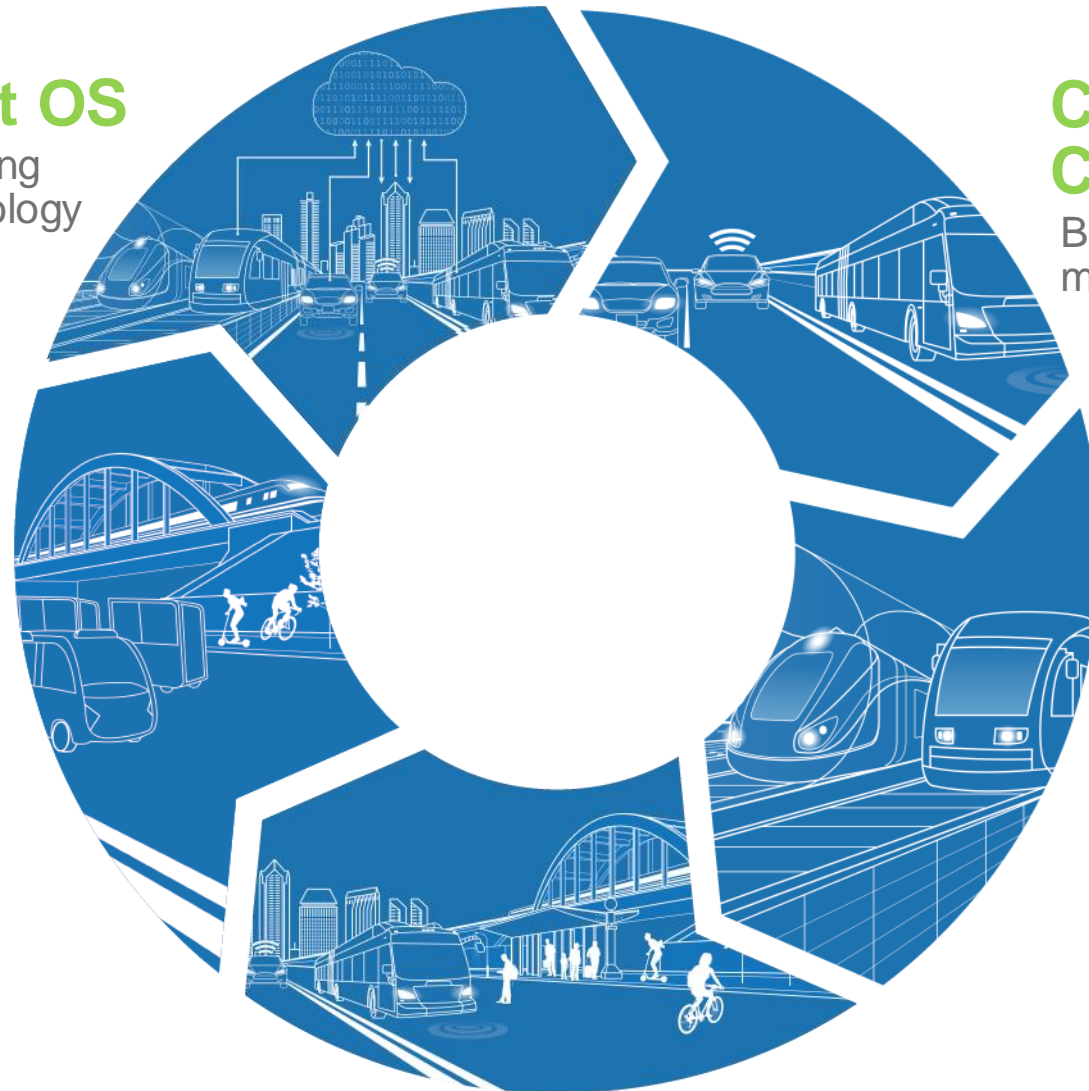
**Next OS**  
Enabling  
technology

**Complete  
Corridors**  
Backbone of a  
multimodal system

**Flexible  
Fleets**  
First and  
Last mile  
options

**Transit  
Leap**  
Quality transit  
alternatives to  
automobiles

**Mobility Hubs**  
Connection and transfer points





An aerial photograph of the Los Angeles region, showing the coastline on the left and the surrounding mountains. Overlaid on the map are several colored lines representing transit routes: a thick purple line, a yellow line, a pink line, and a green line. The purple line is the most prominent, starting from the coast and heading inland. The yellow line follows a similar path but is slightly further inland. The pink line branches off from the yellow line. The green line is a long, winding route that covers a large area of the mountains. Two circular icons with airplane symbols are placed on the map: one near the coast and one further inland. The text 'A Bold New Vision' is written in large, bold, white letters on the left side of the image, with 'Fast, Fair, Clean' written in smaller, white letters below it.

# A Bold New Vision

Fast, Fair, Clean



# CMCP Introduction

**Allan Kosup**

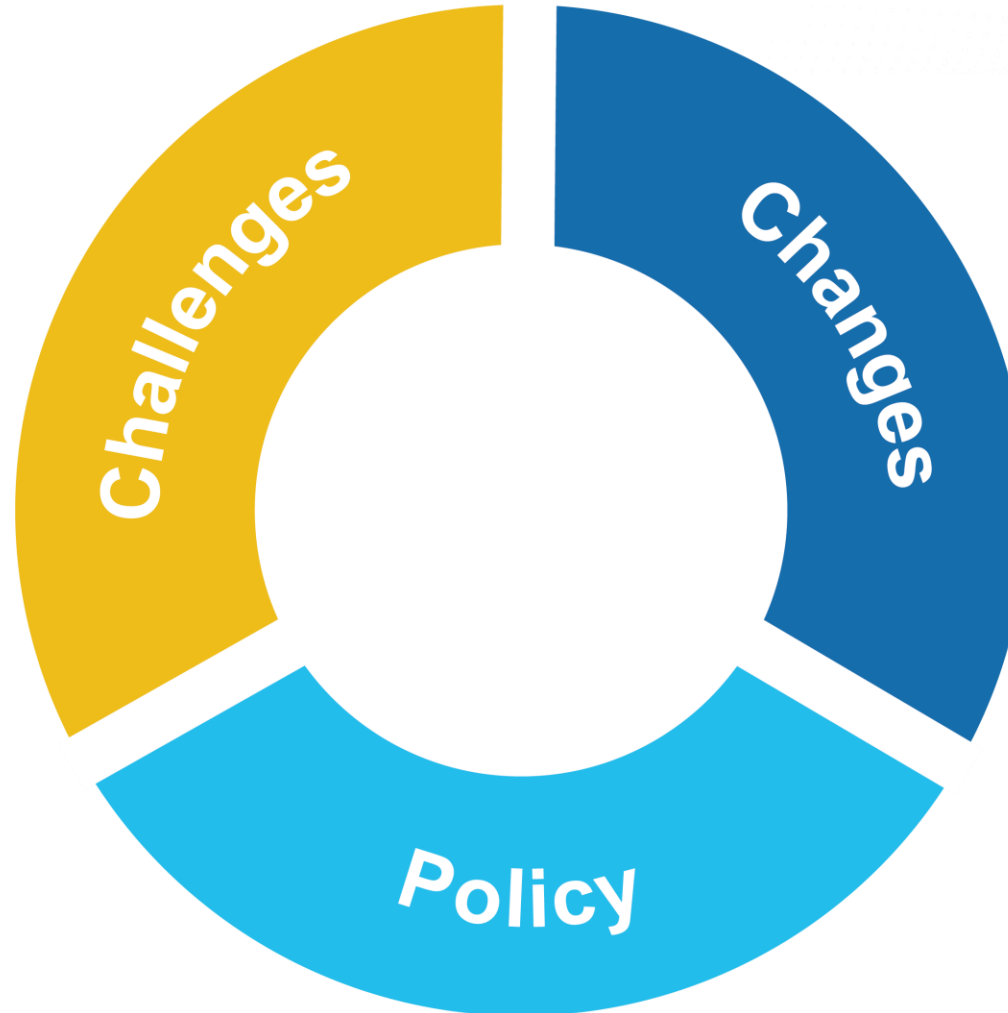
*Caltrans*

*North County Corridor Director*

**North  
County**

# Key Components

Identify challenges based on existing population, experiences, and needs

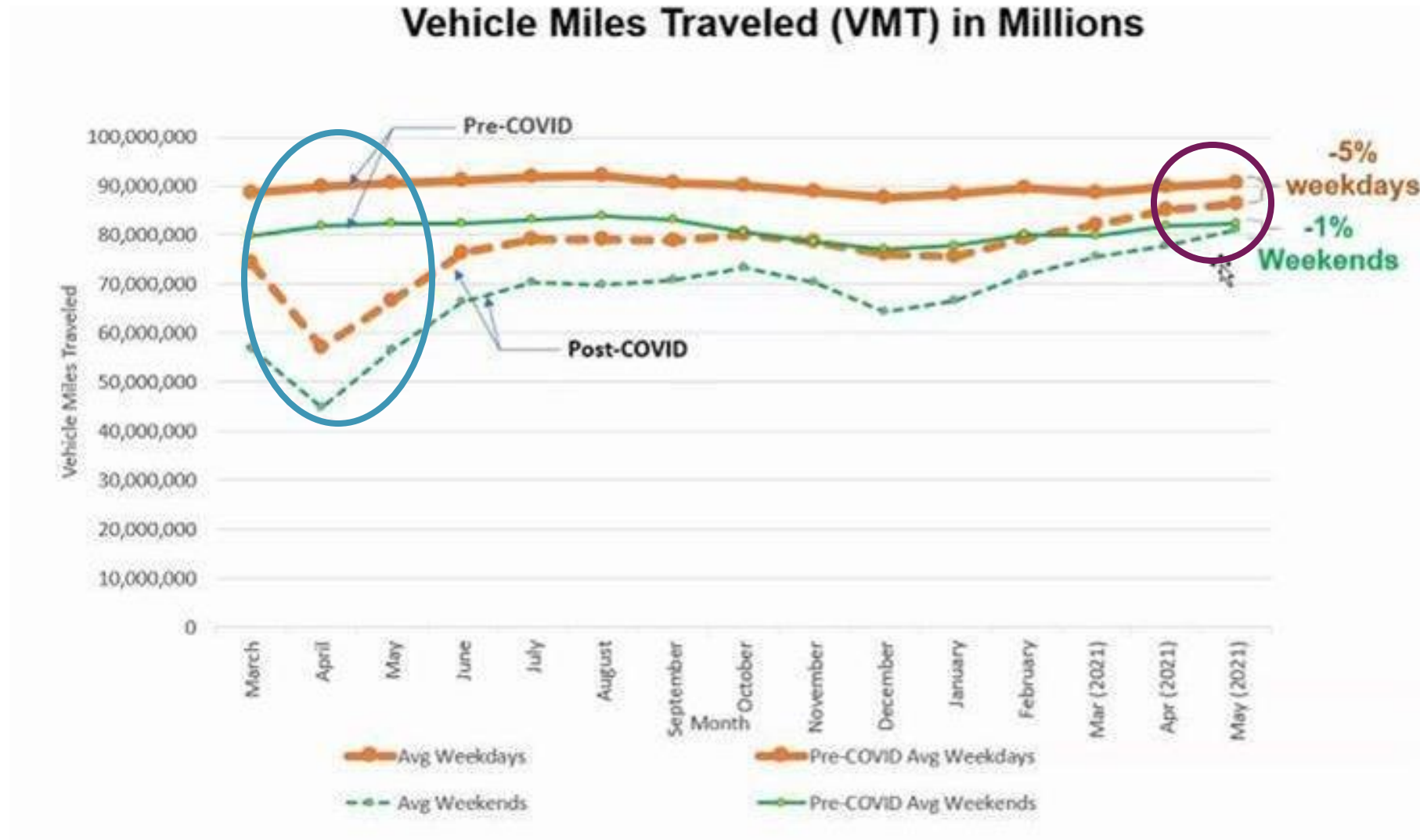


Anticipated and dynamic changes in North County

Respond to the current policy needs and environment



# COVID Impact on Travel Behavior



# Comprehensive Multimodal Corridor Plans (CMCPs) Overview and Process

**North  
County**

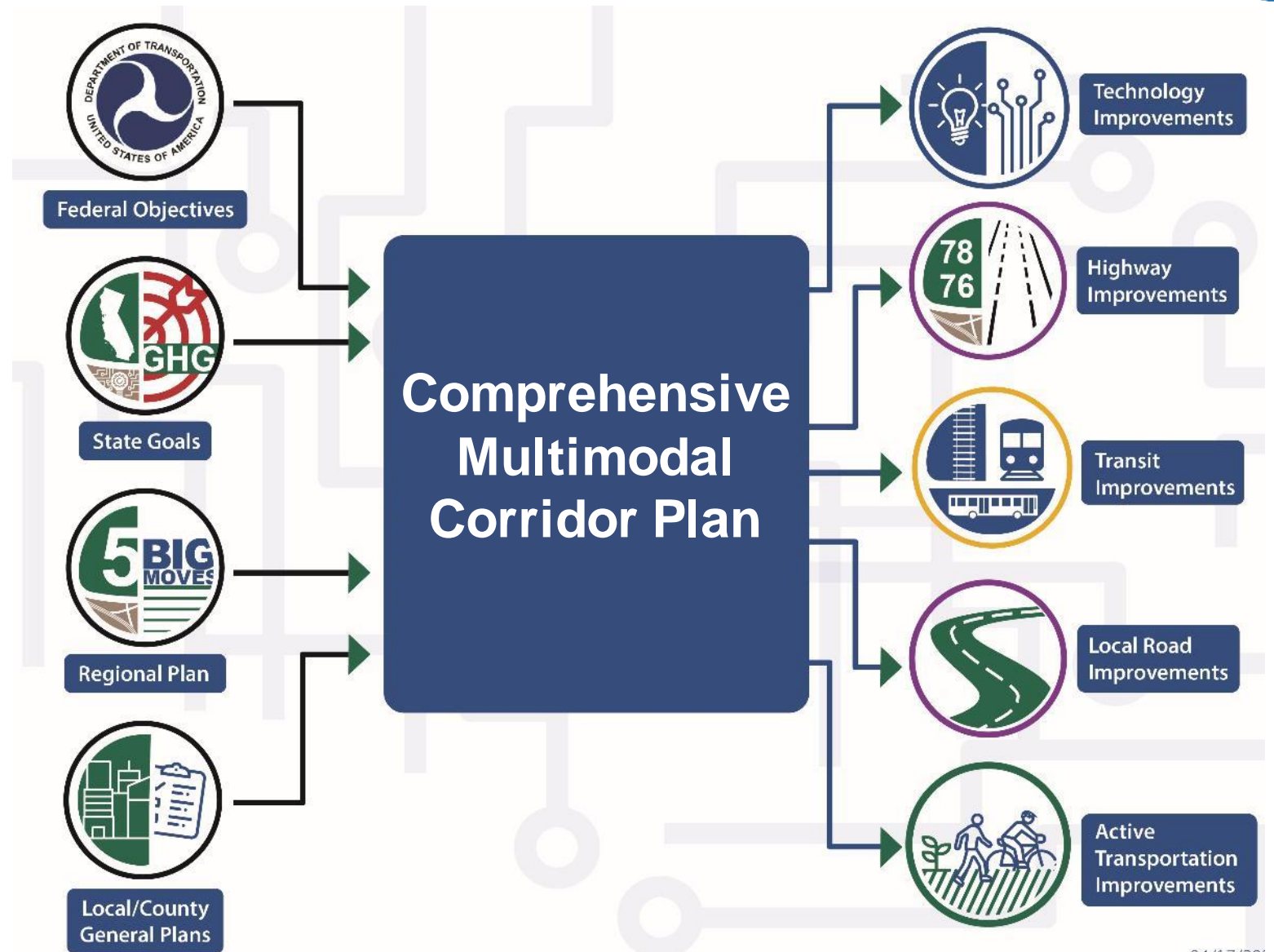


# Integrates State, Regional, and Local Visions

**SANDAG**

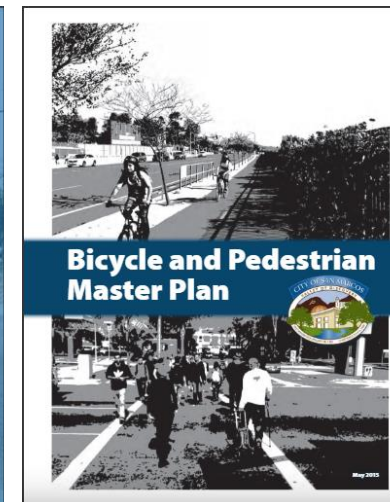
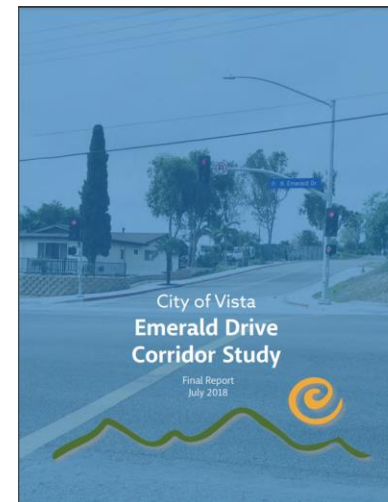
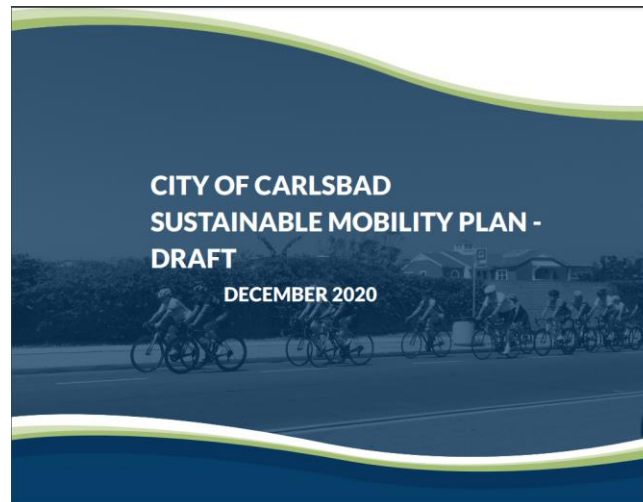
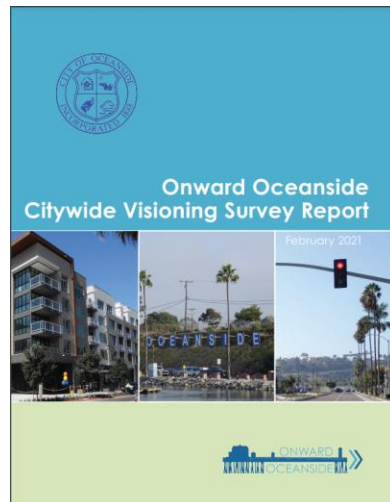
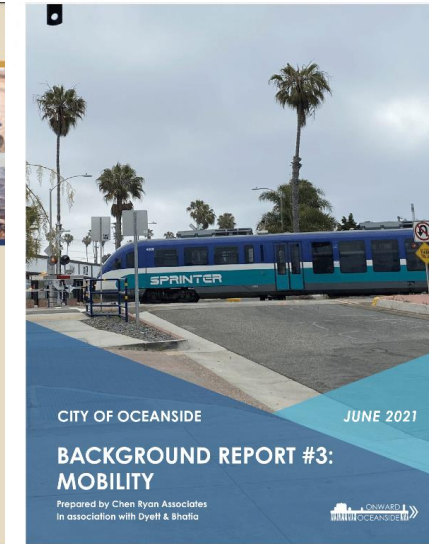
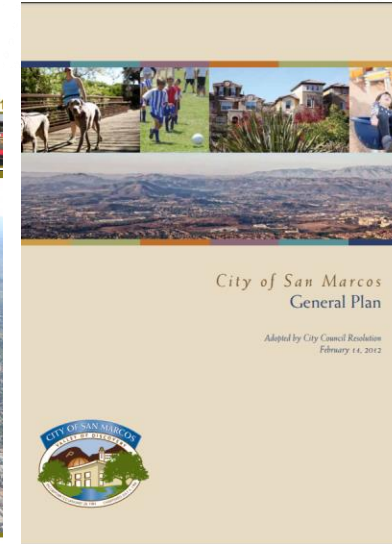
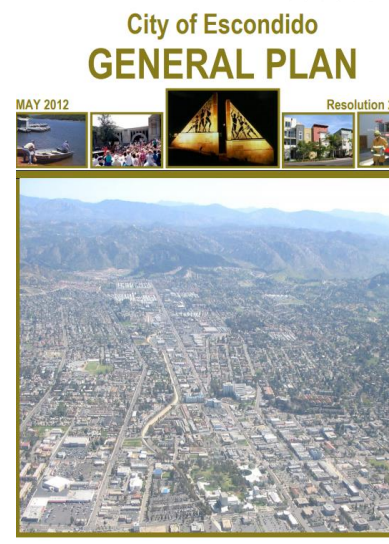
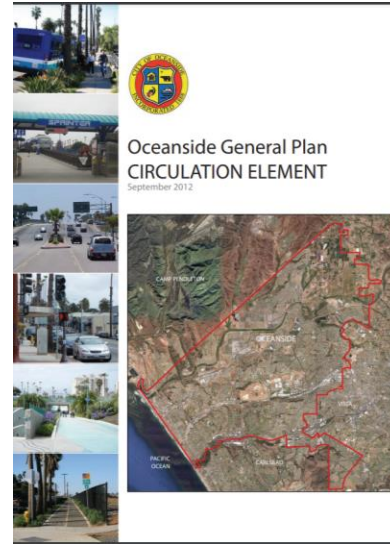
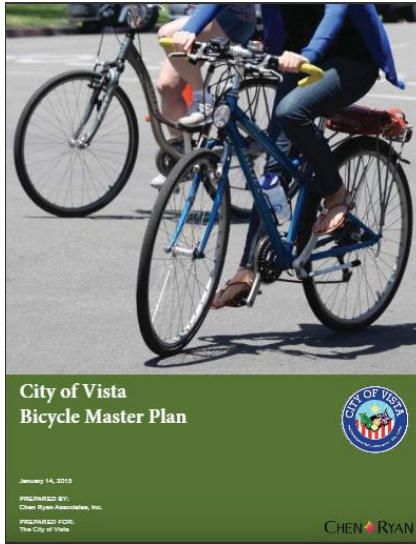
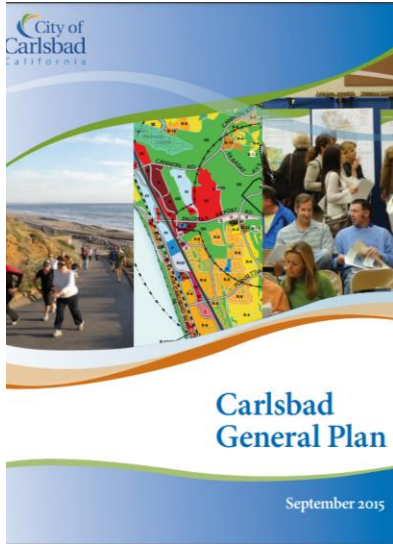
**Caltrans**

**North  
County**





# Addressing Local Needs in a Regional Context



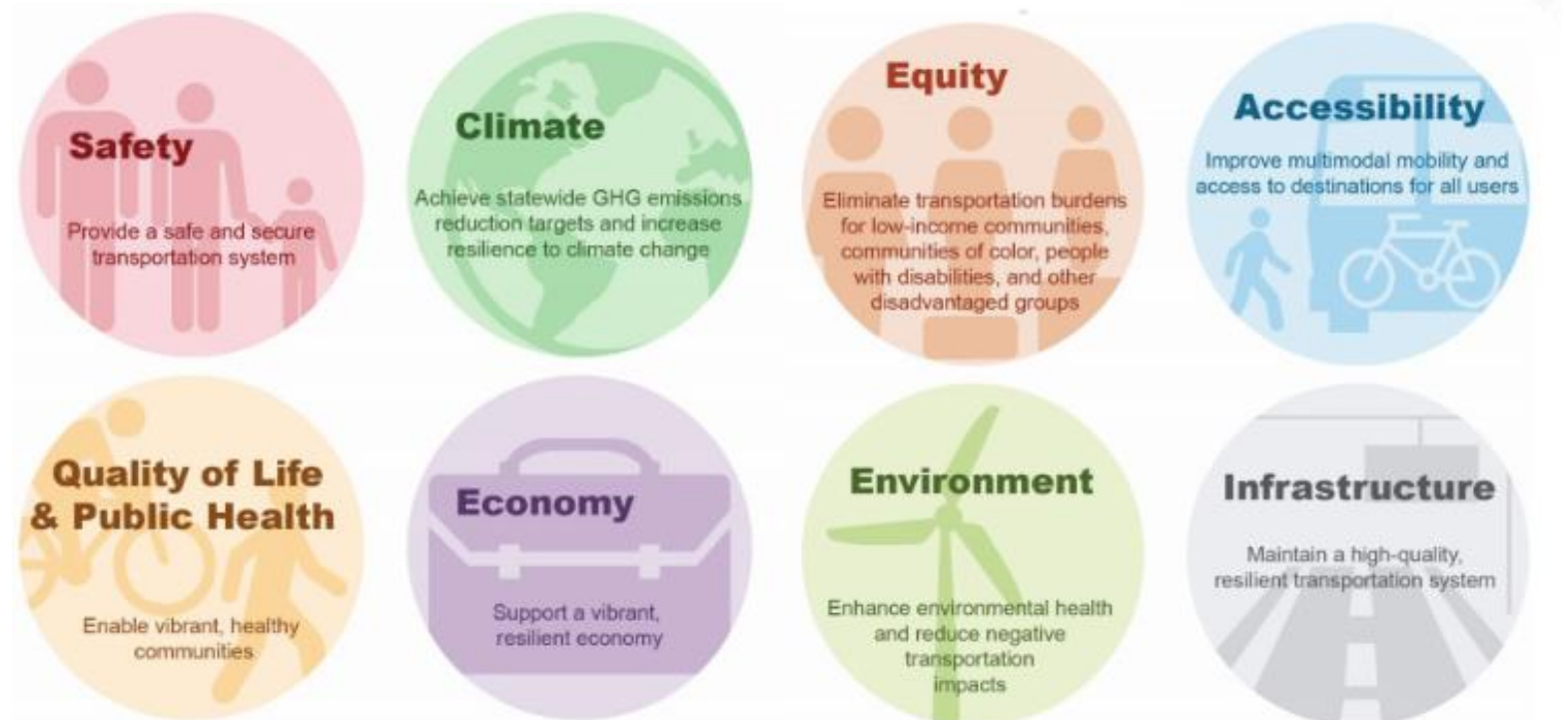


# Alignment with State Goals



## MOVING FORWARD FOR TRANSPORTATION

5 Caltrans Priorities



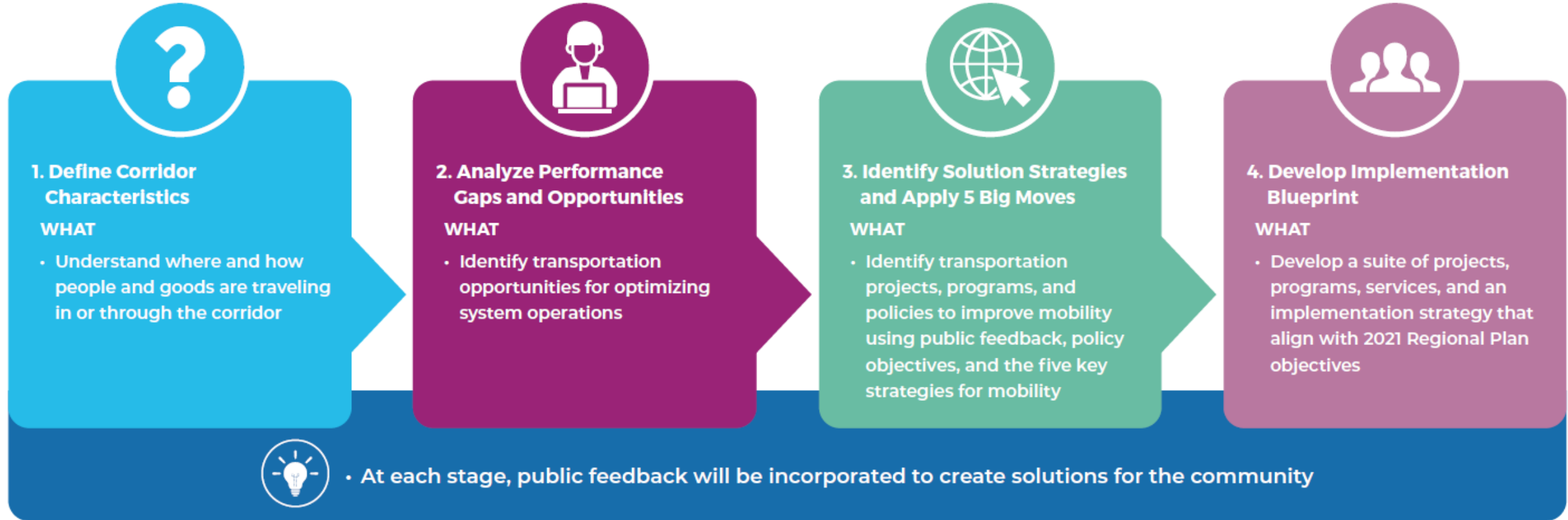
**North  
County**

# Comprehensive Multimodal Corridor Plans Development Process

**SANDAG** **Caltrans**



COMPREHENSIVE  
MULTIMODAL  
CORRIDOR PLAN



Call: (888) 317-8976  
Text: (844) 569-0570  
CMCP@sandag.org  
sandag.org/CMCP



SANDAGregion  
CaltransDistrict11



SANDAGregion  
d11caltrans



SANDAGregion  
CaltransVideo



SANDAG  
SDCaltrans

# North County CMCP Overview

A dark blue circle containing the text "North County" in white, with "North" on the top line and "County" on the bottom line.

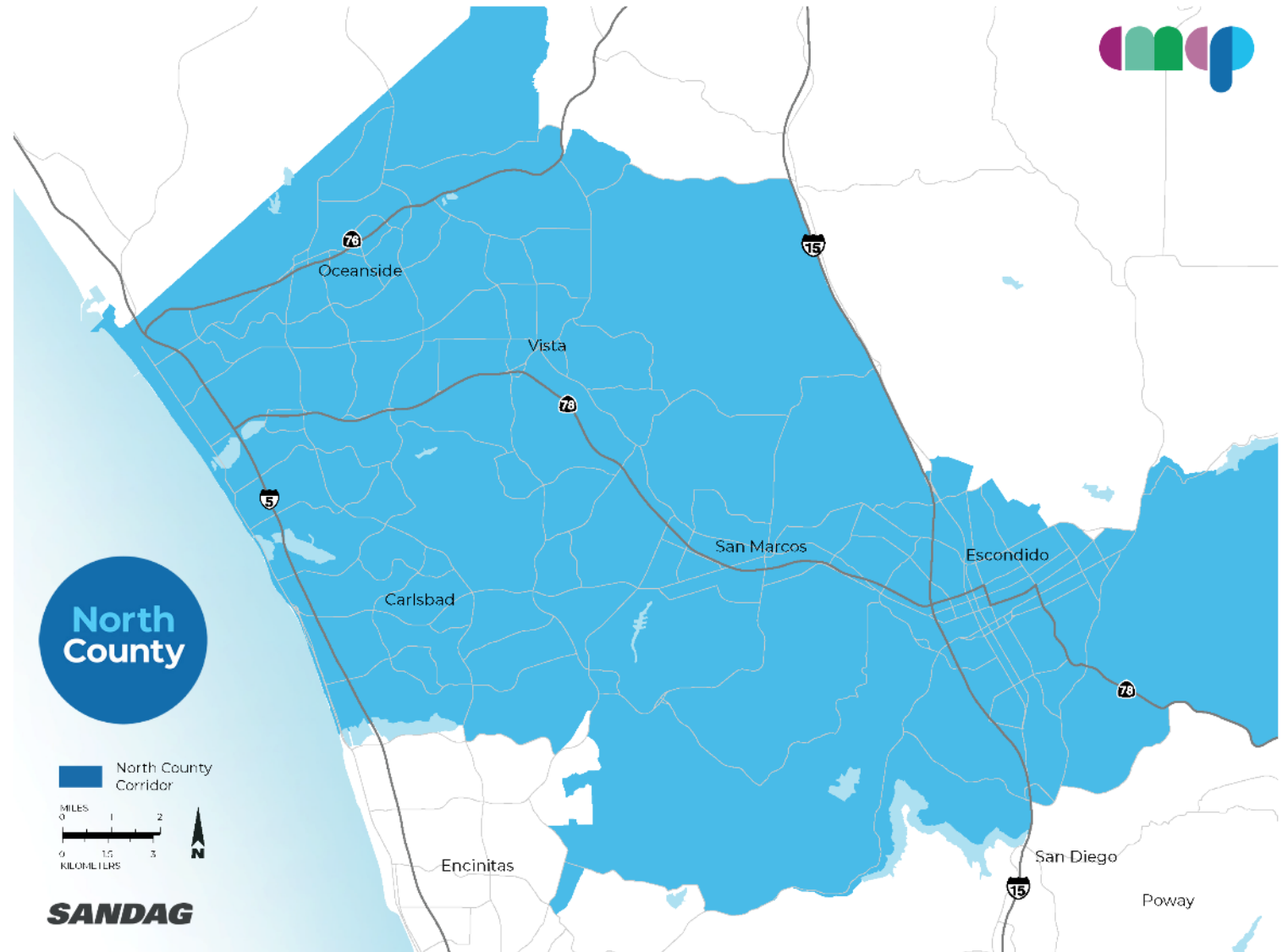
**North  
County**

# North County CMCP Study Area

- Oceanside
- Carlsbad
- Vista
- San Marcos
- Escondido
- Parts of Unincorporated San Diego County

**SANDAG** **Caltrans**

North  
County



02/12/2021

# North County Characteristics

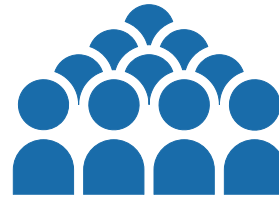
#'s in North County

% of Region

**SANDAG**

**Metrolink**

North  
County



Population

**660,721**  
19.9%



Jobs

**259,488**  
18.0%



Housing  
units

**253,039**  
19.4%



Senior  
population

**94,351**  
20.8%



Low-income  
households

**62,403**  
19.5%

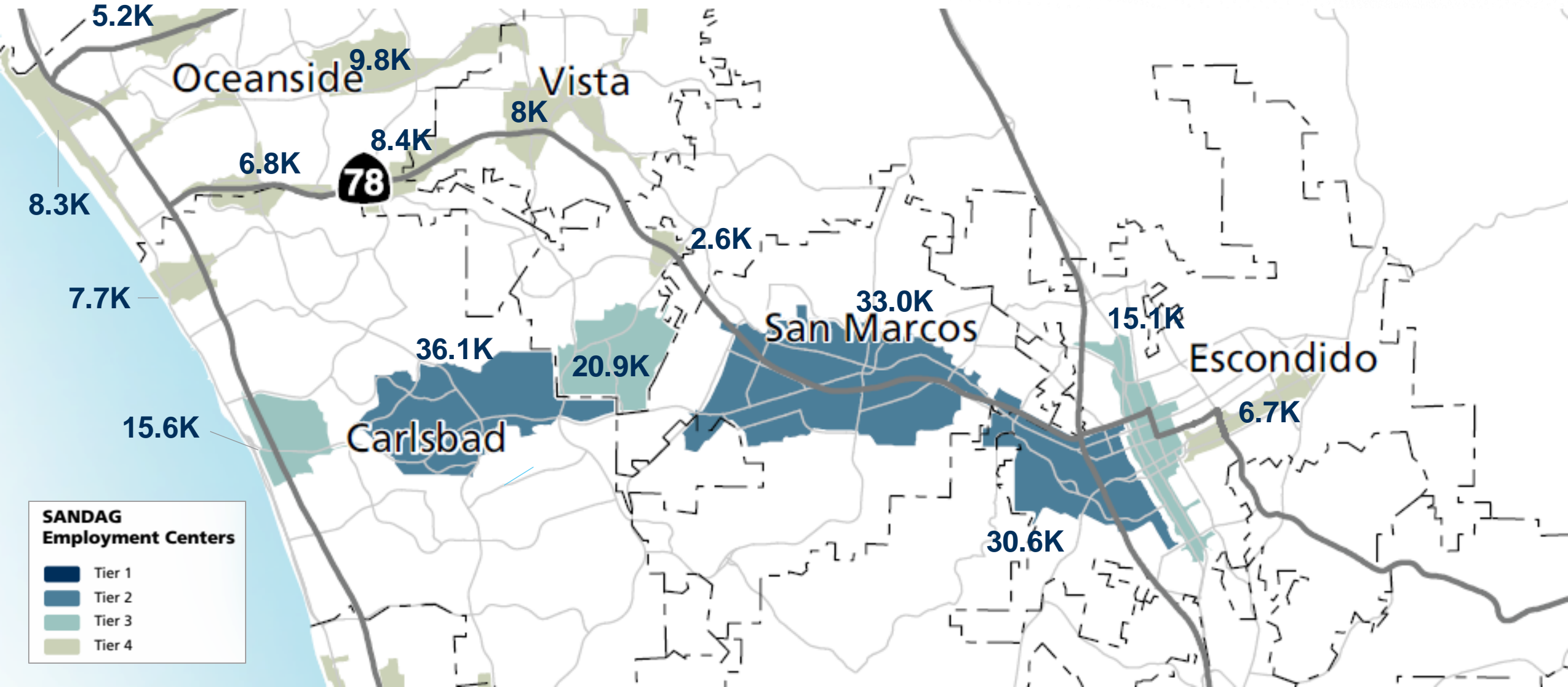


People of Color

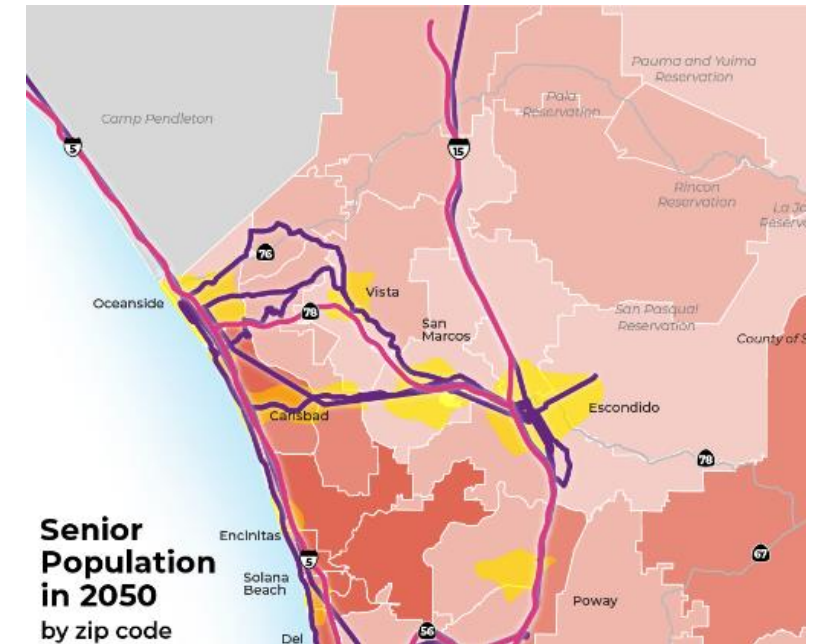
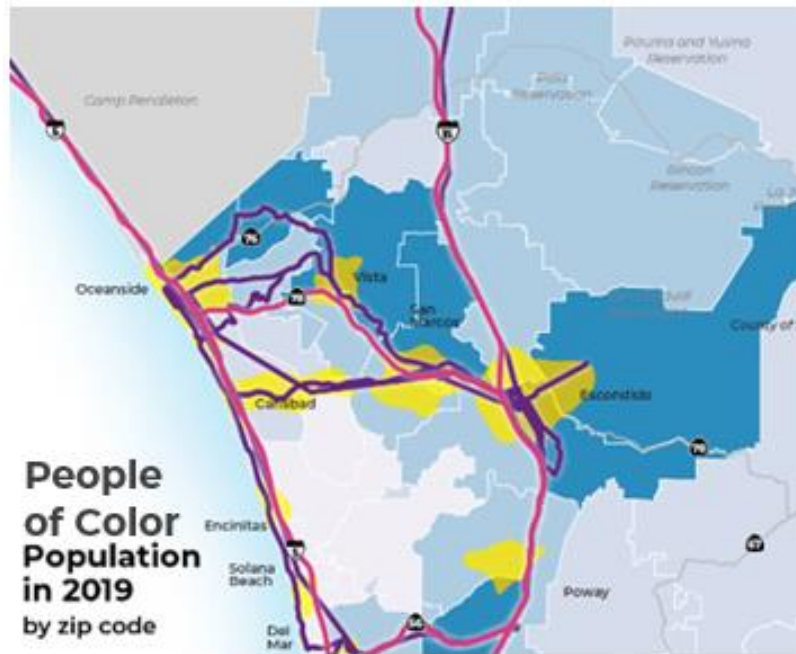
**346,220**  
19.2%



# Top Employment Centers



# Social Equity Populations



# What We Have Heard and Observed

## Challenges

- Congestion & cut through traffic
- Topography (changes in elevation)
- Gaps in bike & sidewalk network
- Limited competitive transit options
- Transit convenience & reliability
- Accessibility
- Rapidly evolving corridor



## Opportunities

- Future growth areas & development
- Connecting major employment & activity centers
- Connecting communities
- General plan updates
- Top routes/paths & major arterials
- Improve safety
- Emerging technology



# Barriers Separating Communities

## Challenge



## Opportunity



# Polling Question

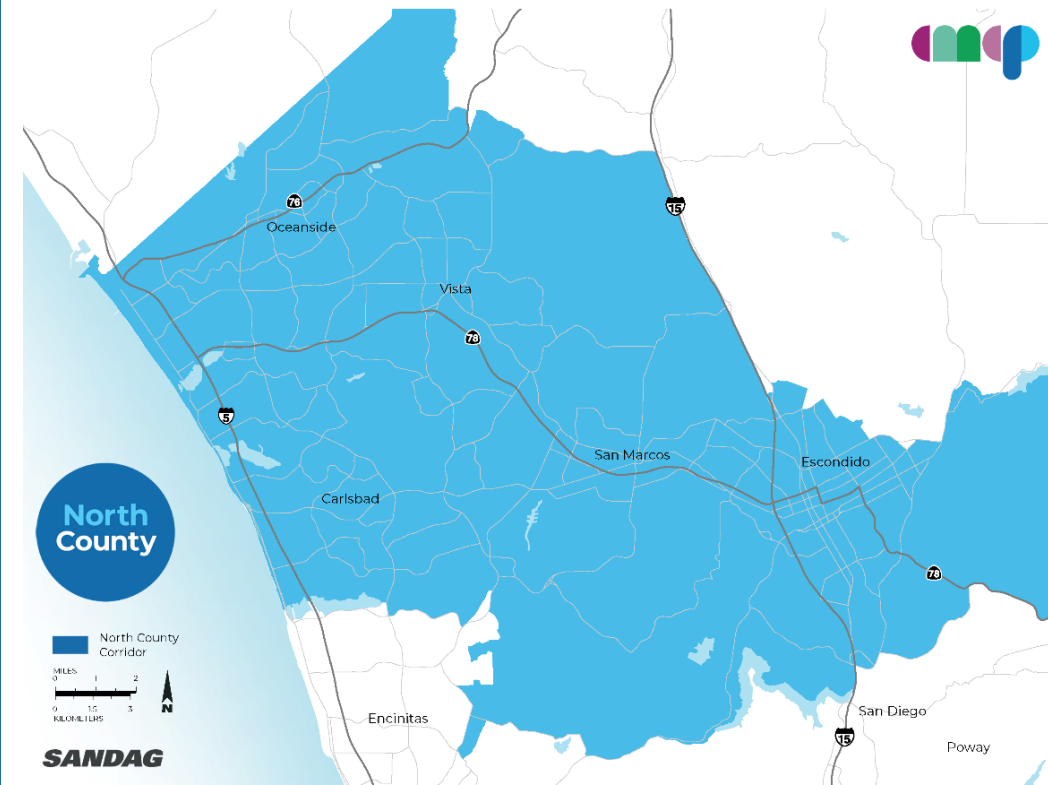
What is most important to you for improving transportation in North County?  
(Select up to three that apply)

- ☐ Expand travel options competitive to driving a car
- ☐ Provide more travel options for short trips (ex. < 5 miles)
- ☐ Enhance/maintain local community character
- ☐ Improve overall travel safety
- ☐ Improve the environment and air quality
- ☐ Decrease congestion
- ☐ Better connection to jobs and school
- ☐ Prepare for future technology
- ☐ Other (enter in the Q&A)

**SANDAG**

**Caltrans**

North  
County



# Preliminary Opportunities and Solutions



# Polling Question

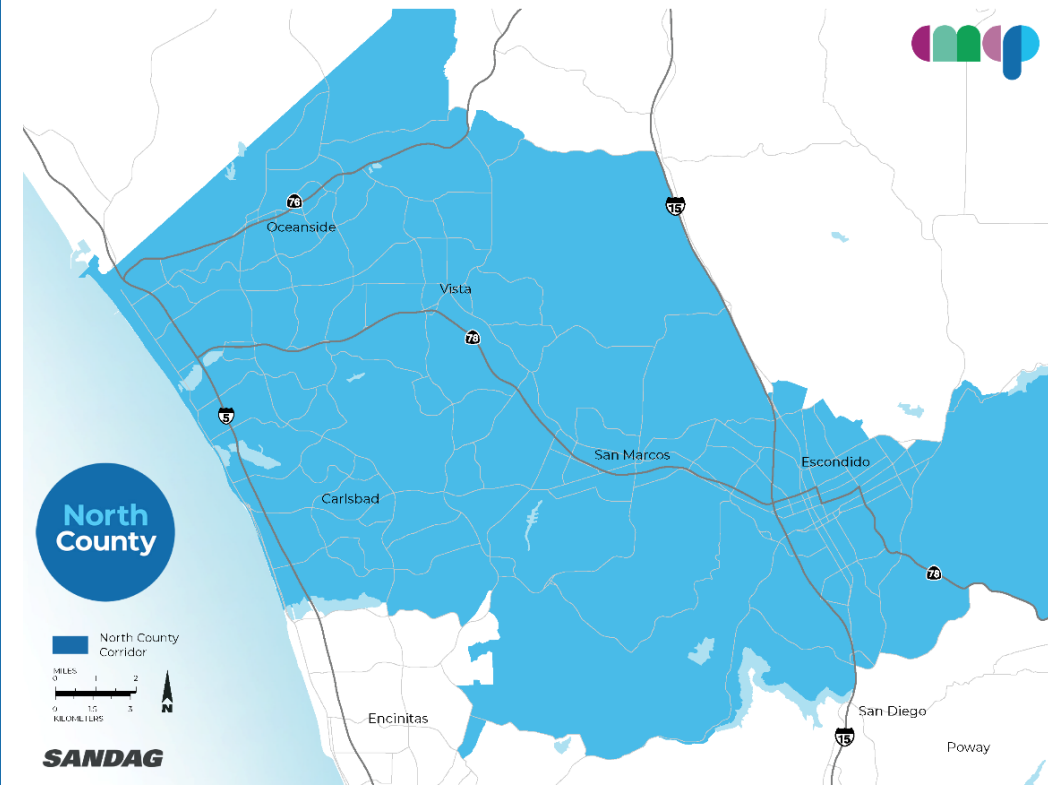
Which types of services can suit your travel needs?  
(Select up to three that apply)

- ☐ On-demand neighborhood shuttles
- ☐ On-demand rideshare service
- ☐ Rideshare and carpool matching
- ☐ Managed highway lanes
- ☐ Smart intersection/arterials
- ☐ More frequent transit service
- ☐ Express bus service
- ☐ Bikeshare and e-bikeshare service
- ☐ Work from home resources
- ☐ Other (enter in the Q&A)

**SANDAG**

**Caltrans**

North  
County





# Guiding North County CMCP Values

## SAFE

Improve the safety for all transportation modes for all users.

## SUSTAINABLE

Reduce vehicle miles traveled, improve mobility, and lower transportation costs by providing options that encourage residents to travel by transit, biking, or walking while protecting the environment.

## IMPROVES QUALITY OF LIFE

Improve quality of life for all communities and users of the corridor while preserving the environment.

## CUSTOMER-BASED SOLUTIONS

Connect with the users of corridor to develop mobility options that work for their needs.

## EQUITY/ SOCIAL JUSTICE

Provide safe, affordable access to the corridor for all users.

## PROMOTES COMMUNITY VITALITY

Integrate transportation investments with land use to promote and enhance communities along the corridor, preparing these communities for the future.

# North County CMCP Goals

North  
County

Provide an Improved Experience for All	Shift Toward Cleaner, Transformative Transportation	Provide Choices Tailored to Needs
Improve the transportation system to meet the needs of users, businesses, and the community, resulting in a positive daily experience for all who travel the corridor.	Promote cleaner transportation modes that make use of resources responsibly.	Create a corridor that provides users with options to move about and meet their daily needs using a variety of safe, efficient, convenient, and affordable transportation modes.
Build a Foundation for Future Possibilities	Improve Community Connections	
Advance mobility investments by leveraging existing and emerging technologies to make the corridor adaptable and flexible for future growth and innovation.	Improve corridor connections to its communities and the regional transportation network so that all modes are reliable, resilient, and adaptable.	

# Polling Question

How well do the values address your priorities?

- ☐ Addresses well
- ☐ Mostly addresses
- ☐ Somewhat addresses
- ☐ Minimally addresses
- ☐ Does not address

SAFE

SUSTAINABLE

IMPROVES QUALITY  
OF LIFECUSTOMER-BASED  
SOLUTIONSEQUITY/  
SOCIAL JUSTICEPROMOTES  
COMMUNITY VITALITY

# Polling Question

How well do the goals address your priorities?

- ☐ Addresses well
- ☐ Mostly addresses
- ☐ Somewhat addresses
- ☐ Minimally addresses
- ☐ Does not address

Provide an Improved Experience for All

Shift Toward Cleaner,  
Transformative Transportation

Provide Choices Tailored to Needs

Build a Foundation for Future Possibilities

Improve Community Connections



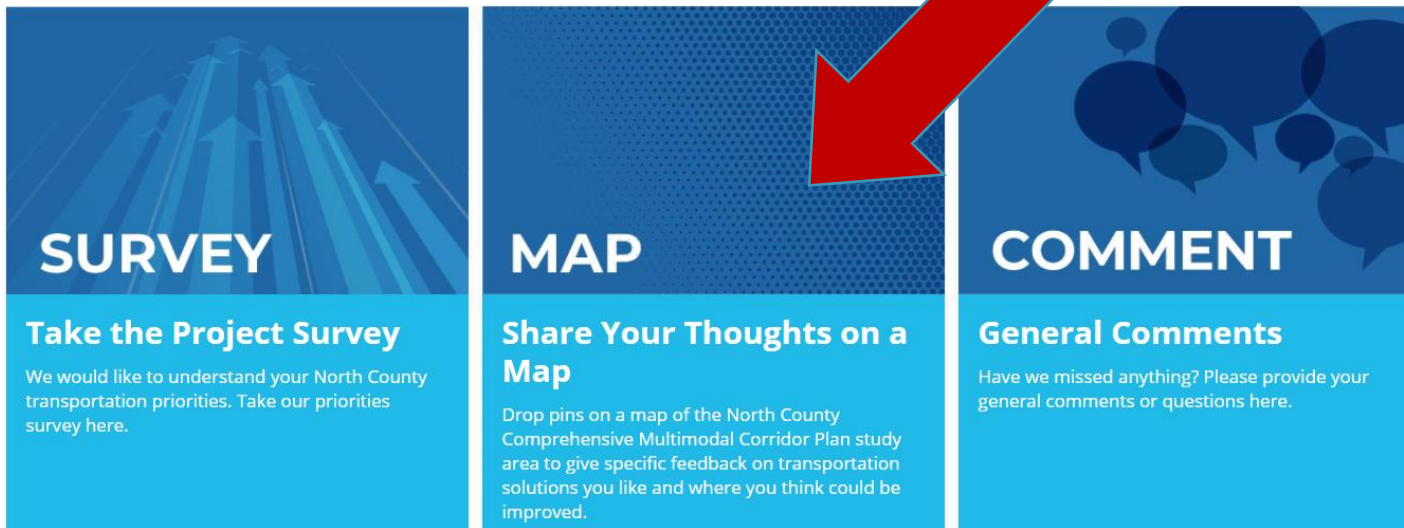
# Virtual Engagement Hub



**North  
County**

# North County Social Pinpoint

- Visit <https://sandag.mysocialpinpoint.com/northcounty> or scan QR Code:
  - Submit comments
  - Provide feedback on our interactive map



# North County CMCP Framework

A dark blue circle containing the text "North County" in white, with "North" on the top line and "County" on the bottom line.

**North  
County**



# North Coast Corridor – First Generation CMCP

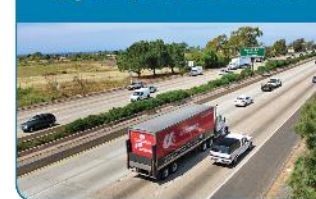
North  
County



## North Coast Corridor Program

Highway, rail, transit, environmental protection and coastal access improvements

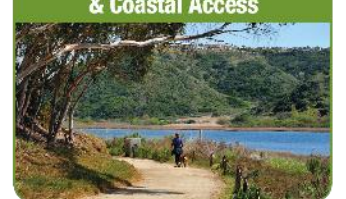
### Highway Improvements



### Coastal Rail and Transit



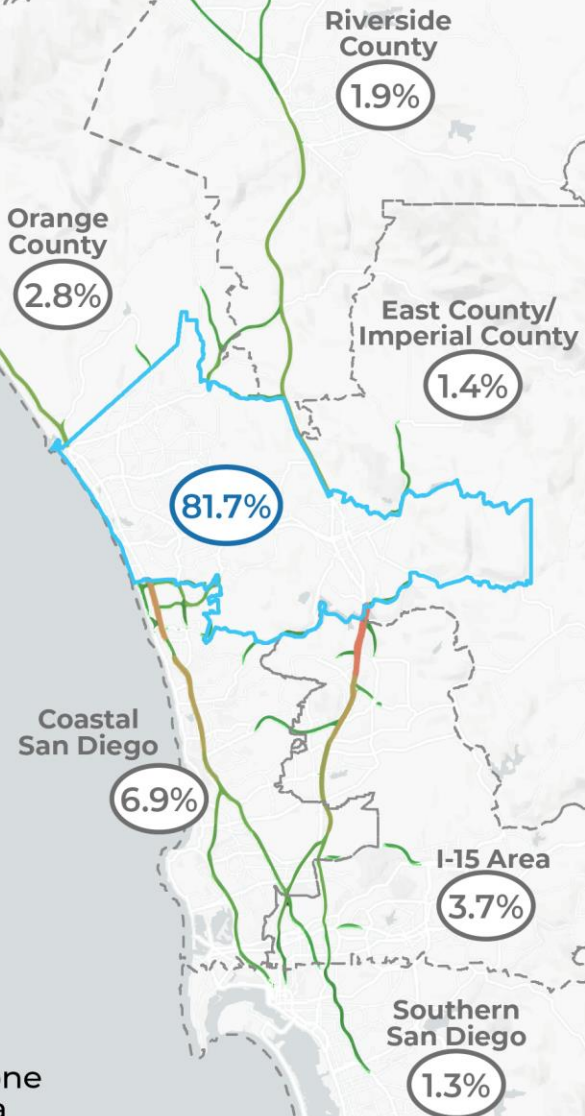
### Environmental Protection & Coastal Access





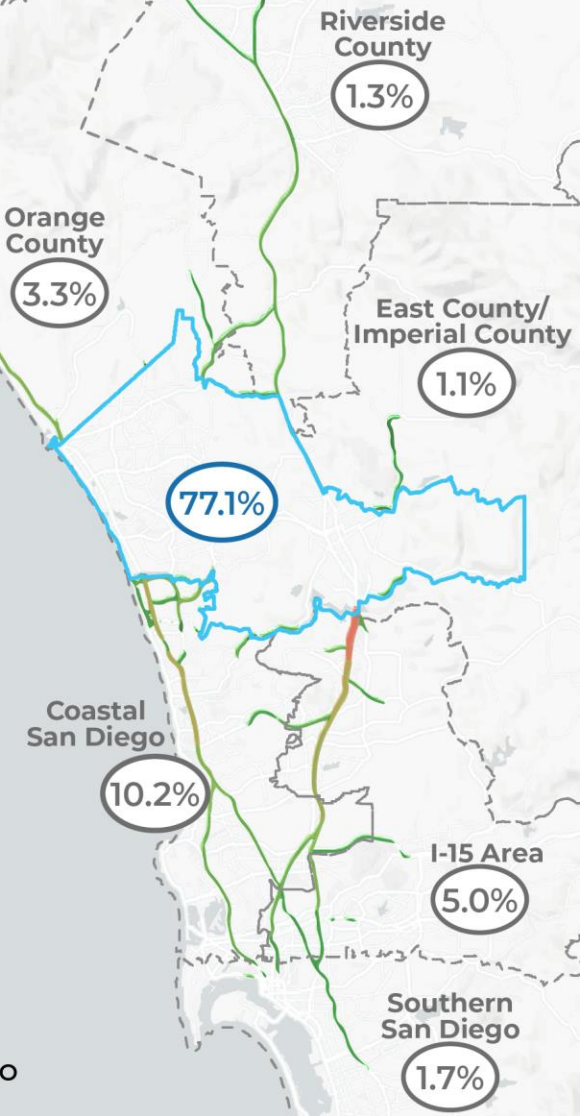
## Weekday Daily Trip Pattern

- North County Study Area
- #% Trips within North County Study Area
- Outlined Zone
- #% Trips between Outlined Zone & North County Study Area



## Morning Trip from North County

- North County Study Area
- #% Trips within North County Study Area
- Outlined Zone
- #% Trips from Outlined Zone to North County Study Area



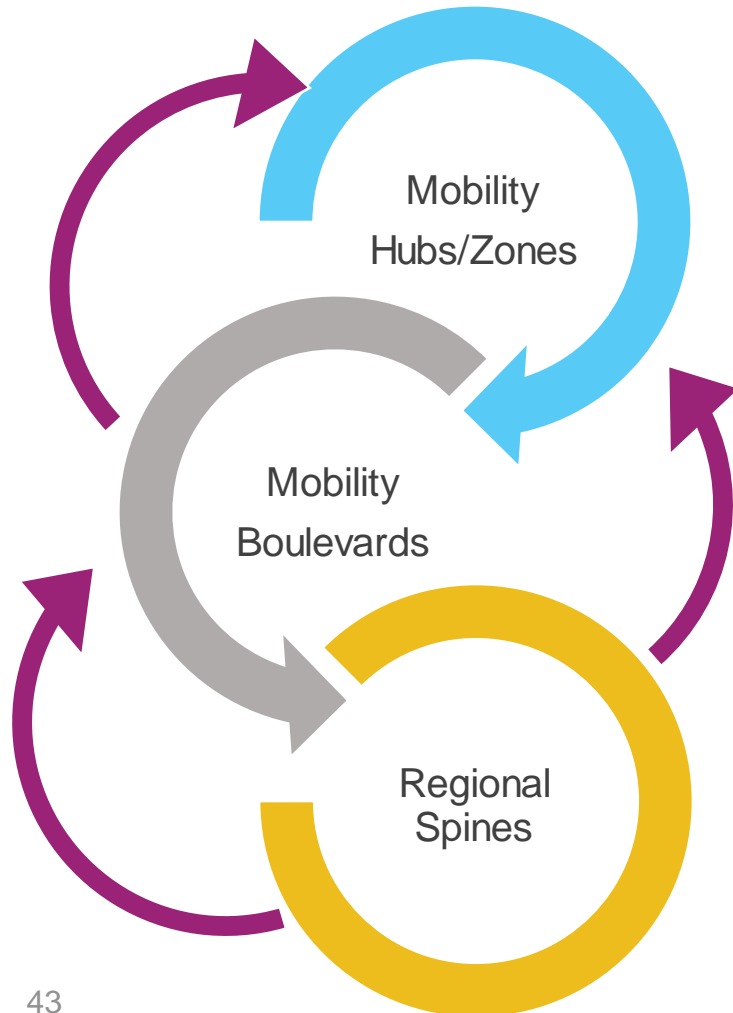


# Top Routes to Work

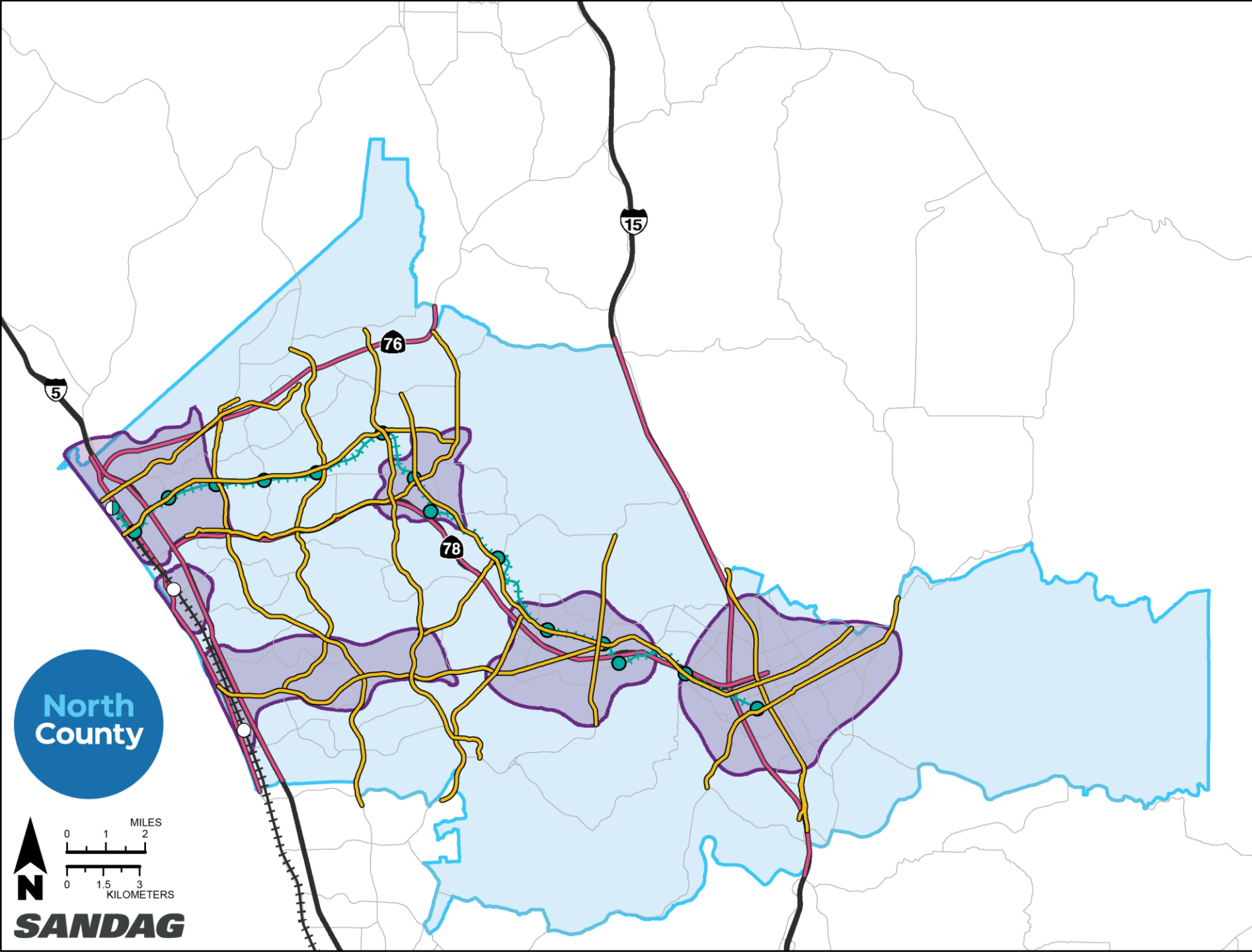


# CMCP Mobility Framework

## Areas of Focus



- **Mobility Hubs/Zones** – Areas with several key destinations & concentration of activity, supported by locally driven solutions
  - *Areas of Mobility*
- **Mobility Boulevards** – Major arterials connecting communities to mobility hubs/zones & regional spines
  - *Community Connectors*
- **Regional Spines** – Connecting North County to the surrounding regions
  - *Core Network*



## LEGEND

 North County  
CMCP Study Area

 Mobility Hub/Zone

 Mobility Boulevard

## Regional Spine

 Regional Corridor

 SPRINTER Station

 SPRINTER

 COASTER Station

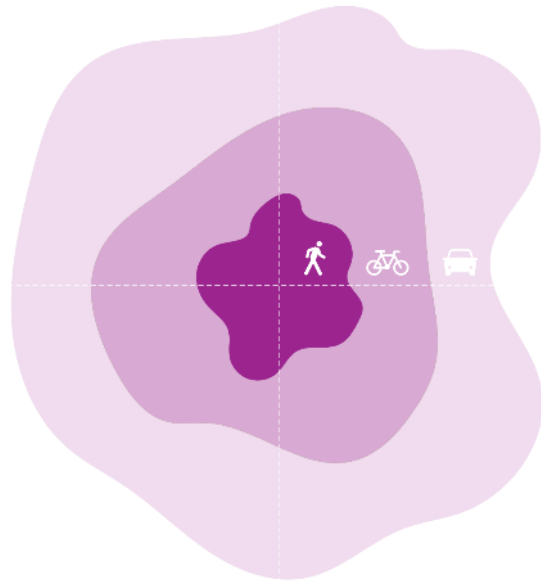
 COASTER



North  
County

North  
County

**SANDAG**  
*Caltrans*

# Mobility Hubs/Zones



-  Walk 5-minute
-  Bike 5-minute
-  Drive 5-minute

- **Existing & future concentration** of activity, development & employment
- **Reflect local** city decisions (General Plans)
- Zones of **connectivity** where different travel options – walking, biking, transit, and shared mobility – come together
- Provide an **integrated suite of mobility** services, amenities, and supporting technologies
- Hub can span one, two, or few miles **to provide on-demand travel choice for short trips around a community**



# Mobility Boulevards

1. **High-volume** *person throughput* corridors connecting our cities, communities, and major activity centers within and around North County.
2. Serve North County's subregional transportation needs into the future – *moving people & goods*.
3. *Connecting to regional spines* to regionally *significant activity centers* (e.g., universities, hospitals, job centers)
4. Provide *choices* to improve quality of travel

## What it is not?

Downtown Main Streets (e.g., Santa Fe)

These are integral to mobility hubs

State Highway System Corridors

Collector Streets (e.g., 9th Street)





# Regional Spine Projects Under Development

North  
County



I-15/SR 78 Managed Lanes Project



I-5/SR 78 Interchange



Inland Rail Trail



Vista Transit Center Mobility Hub



SPRINTER System Improvements

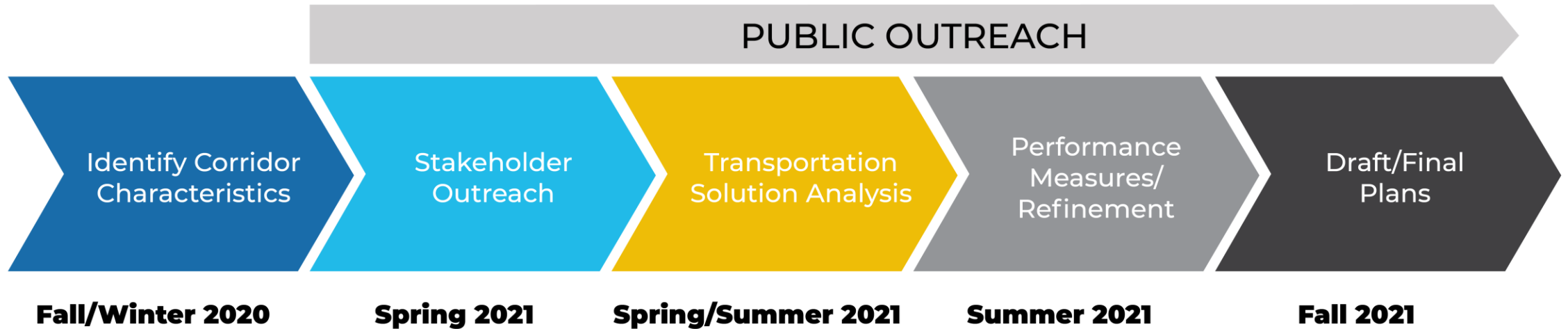
# Questions & Answers

A dark blue circle containing the text "North County" in white.

**North  
County**



# CMCP Development Timeline



SANDAG and Caltrans  
are committed to keeping  
communities informed

---



[sandag.org/CMCP](https://sandag.org/CMCP)



[CMCP@sandag.org](mailto:CMCP@sandag.org)



**Call (888) 317-8976 | Text (844) 569-0570**



**NC Virtual Engagement Hub**  
[sandag.mysocialpinpoint.com/northcounty](https://sandag.mysocialpinpoint.com/northcounty)



**SANDAGregion | SDCaltrans**



**SANDAGregion | D11Caltrans**



**SANDAGregion | CaltransDistrict11**



**SANDAG | SDCaltrans**

**North  
County**