

# Split Front Card Instructions

Patti Dolan  
[patti@pspapercrafts.com](mailto:patti@pspapercrafts.com)  
[www.pspapercrafts.com](http://www.pspapercrafts.com)

YouTube Video - <https://youtu.be/W7mK-szgV9o>



## Measurements

### Cardstock

- Card Base - 4-1/4 x 11, score at 5-1/2 (top folding)
- 1/2 strips for edge of patterned paper

### Basic White

- 1-1/4 x 1 for sentiment
- 5-1/4 x 4 - inside layer

### Designer Series Paper

- 2 different patterns - 4 x 5-1/4

Create a template for cutting cutting your split front (see diagram below)

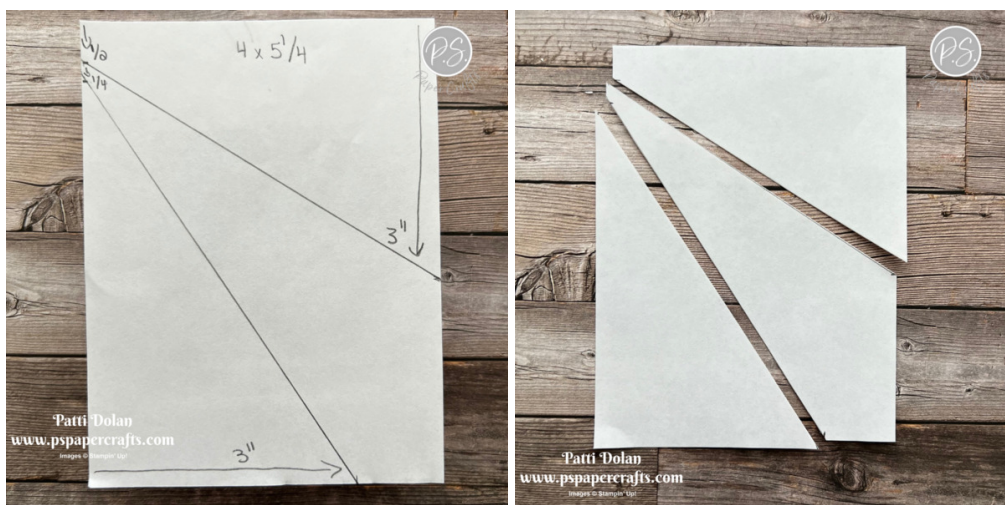
- 4 x 5-1/4
- Measure down 1/2" on the left side and mark with a pencil.
- Mark about a 1/4" below the 1/2" mark
- Measure down 3" on the right side and mark with a pencil. Draw a line to connect the 1/2" to the 3".
- Measure across the bottom 3" from left to right and mark with a pencil. Draw a line to connect the 1/4" to this mark.
- Use your trimmer to cut the lines and save these as your template.

# Split Front Card Instructions

Patti Dolan

[patti@pspapercrafts.com](mailto:patti@pspapercrafts.com)

[www.pspapercrafts.com](http://www.pspapercrafts.com)



## Supplies for this card:

- Cut the pieces you need using the template. You can use cardstock, patterned paper, embossed cardstock and mix and match however you like. Use the template to help decide the pattern you want.
- You can use the full 4 x 5-1/4 layer as the underneath layer to show the middle piece or cut the middle piece using the template. If you don't use the full layer, make sure you have a 4 x 5-1/4 white layer to adhere the pieces to so they line up well.
- Adhere the strips of cardstock to the edge of each of the top and bottom pieces so just a small border shows through. Trim the excess off along the patterned paper.
- Adhere the top and bottom pieces using Dimensionals.
- Decorate the top corner.
- Stamp sentiment on label and adhere to card
- Add embellishments and ribbon or baker's twine as desired.

# Split Front Card Instructions

Patti Dolan

[patti@pspapercrafts.com](mailto:patti@pspapercrafts.com)

[www.pspapercrafts.com](http://www.pspapercrafts.com)



## Supplies for this Card:

- Flight & Airy Designer Series Paper
- Lost Lagoon Cardstock
- Calypso Coral Cardstock
- Basic White Cardstock
- Translucent Florals Stamp Set
- Calypso Coral Ink
- Bough Punch
- White Baker's Twine
- Iridescent Pastel Gems

# Split Front Card Instructions

Patti Dolan

[patti@pspapercrafts.com](mailto:patti@pspapercrafts.com)

[www.pspapercrafts.com](http://www.pspapercrafts.com)



## Details for this Card:

- Perennial Lavender Designer Series Paper
- Gorgeous Grape Cardstock
- Pretty Peacock Cardstock
- Lost Lagoon Cardstock
- Basic White Cardstock
- Blueberry Bunches Stamp Set
- Painted Lavender Dies
- Pretty Peacock Ink
- Black Memento Ink
- Crumb Cake Baker's Twine
- Purple Fine Shimmer Gems



# Split Front Card Instructions

Patti Dolan

[patti@pspapercrafts.com](mailto:patti@pspapercrafts.com)

[www.pspapercrafts.com](http://www.pspapercrafts.com)



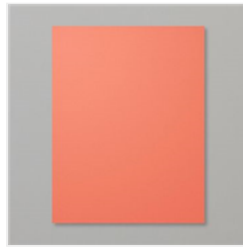
Flight & Airy 12" X 12" (30.5 X 30.5 Cm) Designer Series Paper - 162977

Price: \$0.00



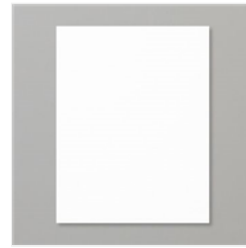
Lost Lagoon 8-1/2" X 11" Cardstock - 133679

Price: \$10.00



Calypso Coral 8-1/2" X 11" Cardstock - 122925

Price: \$10.00



Basic White 8-1/2" X 11" Cardstock - 159276

Price: \$10.50



Translucent Florals Cling Stamp Set (English) - 162243

Price: \$26.00



Bough Punch - 157711

Price: \$22.00



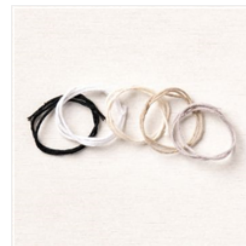
Calypso Coral Classic Stampin' Pad - 147101

Price: \$9.00



Lost Lagoon Classic Stampin' Pad - 161678

Price: \$9.00



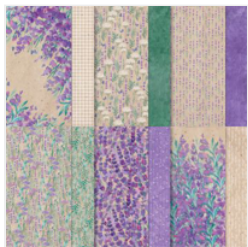
Baker's Twine Essentials Pack - 155475

Price: \$11.00



Iridescent Pastel Gems - 160429

Price: \$8.00



Perennial Lavender 12" X 12" (30.5 X 30.5 Cm) Designer Series Paper - 162593

Price: \$12.50



Gorgeous Grape 8-1/2" X 11" Cardstock - 146987

Price: \$10.00



Pretty Peacock 8-1/2" X 11" Cardstock - 150880

Price: \$10.00



Blueberry Bunches Cling Stamp Set (English) - 162692

Price: \$23.00



Pretty Peacock Classic Stampin' Pad - 150083

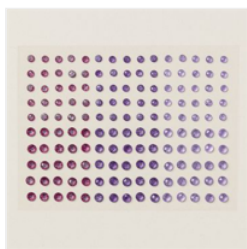
Price: \$9.00

# Split Front Card Instructions

Patti Dolan

[patti@pspapercrafts.com](mailto:patti@pspapercrafts.com)

[www.pspapercrafts.com](http://www.pspapercrafts.com)



Purple Fine  
Shimmer Gems -  
162611

Price: \$8.00



Take Your Pick -  
144107

Price: \$11.00



Paper Trimmer -  
152392

Price: \$26.00



Stampin'  
Dimensionals -  
104430

Price: \$4.25



Mini Glue Dots -  
103683

Price: \$5.75



Multipurpose  
Liquid Glue -  
110755

Price: \$5.50

Add All to Cart