

Apple Harvest Good Friend Card

Meg Holland

megumih4stamps@hotmail.com
<https://www.megumisstampinretreat.com>



Paper Measurements:

- Basic White Thick Cardstock - 5-1/2" x 8-1/2"
- Petal Pink Cardstock - 1" x 6" (2 pieces) for die cutting scallop borders and scraps for die cutting flower centers
- Soft Suede Cardstock - 2" x 5" for die cutting two branches
- Old Olive Cardstock - scraps for die cutting leaves
- Basic White Cardstock - 2-1/2" x 5" for stamping/die cutting two apples, 1" x 4" for stamping/die cutting sentiment, and scraps for die cutting flowers
- Abigail Rose Designer Series Paper - 3" x 5-1/2"

Apple Harvest Good Friend Card

Meg Holland

megumih4stamps@hotmail.com
<https://www.megumisstampinretreat.com>



Instructions:

1. Cut Basic White Thick Cardstock to 5-1/2" x 8-1/2" and score at 4-1/4". Fold in half.
2. Die cut two scallop borders from Petal Pink Cardstock with the Apple Blossoms Dies and adhere to the Abigail Rose Designer Series Paper using Tombow Liquid Glue. Trim any excess ends. Adhere to the card front.
3. Stamp two apples in Soft Suede Ink on Basic White Cardstock. Color in with Stampin' Blends and die cut with the Apple Blossom Dies.
4. Die cut two branches from Soft Suede Cardstock, three small flowers from Basic White Cardstock, three flower centers from Petal Pink and then four leaves from Old Olive Cardstock using the Apple Blossoms Dies.
5. Using Petal Pink (dark) Stampin' Blends and color the center of the white flowers and then adhere the Petal Pink flower center to the white flowers.
6. Adhere the branches to the card front and then adhere the apples with Stampin' Dimensionals. Adhere the leaves with Mini Glue Dots as shown and then add the flowers with Stampin' Dimensionals.
7. Stamp the sentiment in Soft Suede Ink on Basic White Cardstock and then die cut with the Apple Blossoms Dies. Adhere to the card front with Stampin' Dimensionals.
8. Embellish with the Iridescent Pearl Basic Jewels.

Apple Harvest Good Friend Card

Meg Holland

megumih4stamps@hotmail.com
<https://www.megumisstampinretreat.com>



Apple Blossoms
Dies - 160255

Price: \$35.00

Add to Cart



Apple Harvest
Bundle (English) -
162526

Price: \$53.00

Add to Cart



Apple Harvest
Cling Stamp Set
(English) - 159944

Price: \$24.00

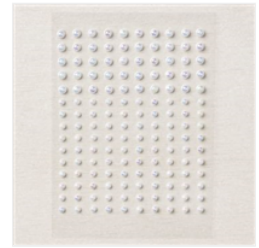
Add to Cart



Abigail Rose 12" X
12" (30.5 X 30.5
Cm) Designer
Series Paper -
159037

Price: \$12.00

Add to Cart



Iridescent Pearl
Basic Jewels -
158987

Price: \$7.50

Add to Cart



Basic White 8-1/2"
X 11" Thick
Cardstock -
159229

Price: \$8.75

Add to Cart



Petal Pink 8-1/2" X
11" Cardstock -
146985

Price: \$9.25

Add to Cart



Soft Suede 8-1/2"
X 11" Cardstock -
115318

Price: \$9.25

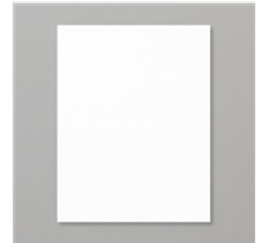
Add to Cart



Old Olive 8-1/2" X
11" Cardstock -
100702

Price: \$9.25

Add to Cart



Basic White 8-1/2"
X 11" Cardstock -
159276

Price: \$10.25

Add to Cart



Soft Sea Foam
Stampin' Blends
Combo Pack -
154902

Price: \$9.00

Add to Cart



Old Olive Stampin'
Blends Combo
Pack - 154892

Price: \$9.00

Add to Cart



Petal Pink
Stampin' Blends
Combo Pack -
154893

Price: \$9.00

Add to Cart



Soft Suede Classic
Stampin' Pad -
147115

Price: \$8.00

Add to Cart



Mini Stampin'
Dimensionals -
144108

Price: \$4.25

Add to Cart

Apple Harvest Good Friend Card

Meg Holland

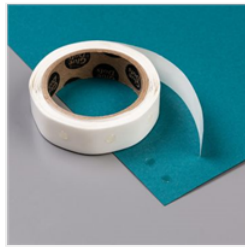
megumih4stamps@hotmail.com
<https://www.megumisstampinretreat.com>



Stampin'
Dimensionals -
104430

Price: \$4.25

Add to Cart



Mini Glue Dots -
103683

Price: \$5.25

Add to Cart



Multipurpose
Liquid Glue -
110755

Price: \$4.00

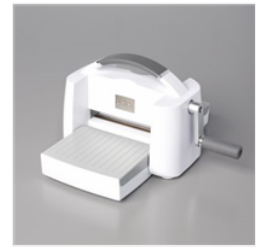
Add to Cart



Stampin' Seal -
152813

Price: \$8.00

Add to Cart



Stampin' Cut &
Emboss Machine -
149653

Price: \$125.00

Add to Cart