

Box in a Card

Angie Juda
<http://orderwithangie.com>
helpdesk@chicnscratch.com
ChicnScratch.com



Night of Navy: 8-1/2" x 5-1/2" - Score at 4-1/4" then cut 2" squares for box.

Rococo Rose: scraps for die-cutting flowers

Seaside Spray: scraps for die-cutting flowers

Old Olive: scraps for die-cutting leaves

Paper Bloom Designer Series Paper: 5-1/2" x 3/4" (2 pieces)

Lid: 3-1/2" x 3-1/2" - Score at just slightly less than 3/4" on each side.

Bottom of box: 6" x 6" - Score at 2" on all sides.

Basic White Cardstock: 2-1/2" x 3-1/2" for oval (scraps), 5-1/4" x 1-7/8"

Box in a Card

Angie Juda
<http://orderwithangie.com>
helpdesk@chicnscratch.com
ChicnScratch.com



[Click here for the Video Tutorial](#)



[In Bloom
Photopolymer
Stamp Set -
154380](#)



[In Bloom Bundle
\(English\) - 156208](#)



[Night Of Navy
Classic Stampin'
Pad - 147110](#)



[Paper Blooms 12"
X 12" \(30.5 X 30.5
Cm\) Designer
Series Paper -
155222](#)



[Night Of Navy 8-
1/2" X 11"
Cardstock -
100867](#)



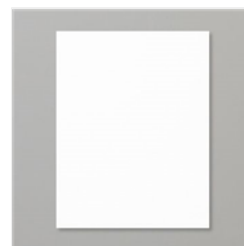
[Rococo Rose 8-
1/2" X 11"
Cardstock -
150882](#)



[Seaside Spray 8-
1/2" X 11"
Cardstock -
150883](#)



[Old Olive 8-1/2" X
11" Cardstock -
100702](#)



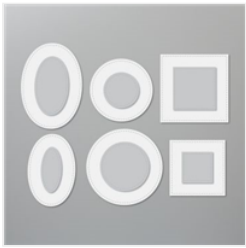
[Basic White 8-1/2"
X 11" Cardstock -
159276](#)



[Pierced Blooms
Dies - 154312](#)

Box in a Card

Angie Juda
<http://orderwithangie.com>
helpdesk@chicnscratch.com
ChicnScratch.com



[Stitched Shapes Dies - 152323](#)



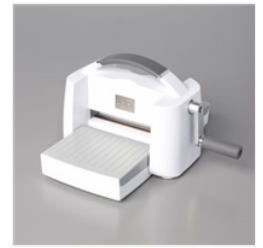
[3/8" \(1 Cm\) Denim Ribbon - 149590](#)



[Pearl Basic Jewels - 144219](#)



[Paper Trimmer - 152392](#)



[Stampin' Cut & Emboss Machine - 149653](#)



[Simply Scored Scoring Tool - 122334](#)



[Take Your Pick - 144107](#)



[Silicone Craft Sheet - 127853](#)



[Stampin' Dimensionals - 104430](#)



[Mini Stampin' Dimensionals - 144108](#)



[Multipurpose Liquid Glue - 110755](#)