

Butterfly Triangle

Fun Fold Card

Angie Juda

<http://orderwithangie.com>

helpdesk@chicnscratch.com

ChicnScratch.com



Thick Basic White: 8-1/2" x 11"

Score on landscape side @ 5-1/2" - Score on portrait side @ 4-1/4"

Place scored card stock in Paper Trimmer at an angle, aligning opposite corner points with cutting groove and slice from corner to corner. You have to remove scoring blade to fit the card stock on the Paper Trimmer. This cuts your sheet into the two card bases.

Basic White: Scraps for die cutting and greeting

Butterfly Bijou Designer Series Paper: 5-1/4" x 4" cut at angle, Butterfly

[**Blog Post - Click Here**](#)

Butterfly Triangle

Fun Fold Card

Angie Juda

<http://orderwithangie.com>

helpdesk@chicnscratch.com

ChicnScratch.com



[Butterfly Brilliance
Collection -
159408](#)



[Butterfly Brilliance
Bundle - 155821](#)



[Brushed Blooms
Cling Stamp Set -
154432](#)



[Tuxedo Black
Memento Ink Pad -
132708](#)



[Butterfly Bijou 6" X
6" \(15.2 X 15.2
Cm\) Designer
Series Paper -
156824](#)



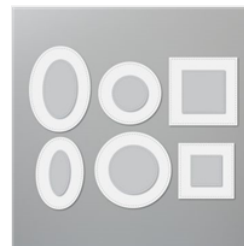
[Basic White 8-1/2"
X 11" Thick
Cardstock -
159229](#)



[Basic White 8-1/2"
X 11" Cardstock -
159276](#)



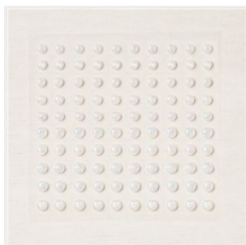
[Brilliant Wings
Dies - 155523](#)



[Stitched Shapes
Dies - 152323](#)



[Classic Label
Punch - 141491](#)



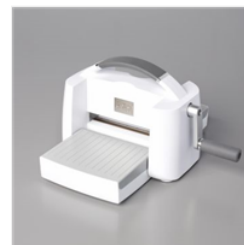
[Opal Rounds -
154289](#)



[Paper Trimmer -
152392](#)



[Mini Stampin'
Dimensionals -
144108](#)



[Stampin' Cut &
Emboss Machine -
149653](#)



[Multipurpose
Liquid Glue -
110755](#)



[Simply Scored
Scoring Tool -
122334](#)



[Take Your Pick -
144107](#)



[Butterfly Brilliance
Cling Stamp Set -
155092](#)



[Watercolor Pencils
Assortment 2 -
149014](#)



[Watercolor Pencils
- 141709](#)

Butterfly Triangle

Fun Fold Card

Angie Juda

<http://orderwithangie.com>

helpdesk@chicnscratch.com

ChicnScratch.com



[Blender Pens -
102845](#)



[Jet Black Stazon
Pad - 101406](#)