

Twin Hearts Card - Adoring Hearts Bundle

New Product Premier

Debbie Crowley

732-397-9128

expressivelydeb@gmail.com

<http://www.expressivelydeb.com>

expressively deb...
...the only limitation is your imagination



There is a complete supply list at the end of this Tutorial.

Parts & Pieces:



- The Boho Blue cardstock card base is 4 1/4" x 11" and scored at 5 1/2".
- The Basic White card front mat layer is 4 1/8" x 5 3/8".
- The patterned paper layer is 4" x 5 1/4".
- Cut a piece of Vellum cardstock 4" x 1 3/4".
- Die cut two embossed hearts using the Adoring Hearts Hybrid Embossing Folder.
- Die cut one large heart using Brushed Gold cardstock. This die is from the Horray For

Twin Hearts Card - Adoring Hearts Bundle

New Product Premier

Debbie Crowley

732-397-9128

expressivelydeb@gmail.com

<http://www.expressivelydeb.com>

Surprises Dies. (You can use any heart die or punch you have. The heart measures about 2 1/4" across the top).

- Using the Adoring Hearts Hybrid Embossing Die to die cut two embossed smaller hearts.
- With White Pigment Ink and a sponge dauber, lightly "white wash" the embossed hearts. Set them aside to dry.
- Die cut two Misty Moonlight filer sprigs from the Adoring Hearts Dies.
- Die cut two Boho Blue open leaves from the Adoring Hearts Dies.
- Die cut one Basic White small heart cluster using the Adoring Hearts Dies.
- Use the "little filler" Basic White hearts as embellishments.
- Cut about 22 inches of white Baker's Twine.
- Stamp and die cut the sentiment using the Adoring Hearts Stamp Set and Dies.

Assemble the Card:



- Adhere the patterned paper layer to the Basic White cardstock mat layer.
- Adhere the top two layers to the card base as show.
- Add glue or your favorite adhesive to the center of the back of the Vellum cardstock strip and attach it to the center of the card front on top of the patterned paper layer.
- Attach the gold heart to the center of the Vellum strip as shown.
- Tie a large bow using the Baker's Twine and attach it diagonally across and in the center of the gold heart. I used a glue dot to adhere the bow.
- Using Dimensionals, attach the two smaller embossed hearts to the center and top of the gold heart as shown.
- Adhere the sentiment banner in the center and across the two embossed hearts.
- Attach the "filler dies" as follows: Adhere each Misty Moonlight sprig under each bow loop and under the embossed hearts.
- Adhere the Boho Blue leaves on top of the Misty Moonlight sprigs.
- Adhere the small Basic White heart cluster above the right embossed heart as shown.

The Inside:

Twin Hearts Card - Adoring Hearts Bundle

New Product Premier

Debbie Crowley

732-397-9128

expressivelydeb@gmail.com

<http://www.expressivelydeb.com>



- Cut a Basic White cardstock layer 3 3/4" x 5".
- Cut a patterned paper layer 1/4" x 4".
- Attach the patterned paper strip to the cardstock layer and trim the strip to the width of the layer.
- Stamp the sentiment from the Adoring Hearts stamp set with Boho Blue ink in the center of the inside layer.
- Adhere the layer to the inside of the card.

Decorate your envelope flap or add a stamped image to your envelope. This always adds that little "something"!

I hope you enjoyed this Tutorial and the video.

I would love to hear from you.

Thank you for stopping by and sharing your time with me.

Debbie

Twin Hearts Card - Adoring Hearts Bundle

New Product Premier

Debbie Crowley

732-397-9128

expressivelydeb@gmail.com

<http://www.expressivelydeb.com>



Adoring Hearts
Bundle (English) -
162570

Price: \$53.00



Hooray For
Surprises Bundle
(English) - 162858

Price: \$46.75



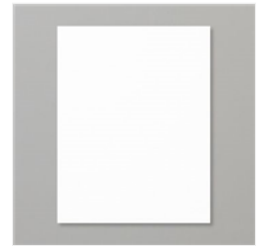
Flight & Airy 12" X
12" (30.5 X 30.5
Cm) Designer
Series Paper -
162977

Price: \$0.00



Boho Blue 8-1/2" X
11" Cardstock -
161724

Price: \$10.00



Basic White 8-1/2"
X 11" Cardstock -
159276

Price: \$10.50



Gold Foil Sheets -
132622

Price: \$5.00



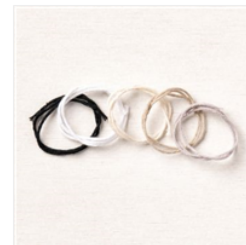
Vellum 8-1/2" X
11" Cardstock -
101856

Price: \$10.00



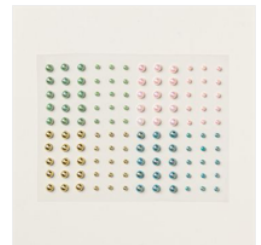
Boho Blue Classic
Stampin' Pad -
161650

Price: \$9.00



Baker's Twine
Essentials Pack -
155475

Price: \$11.00



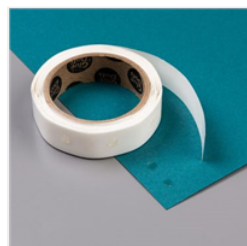
Blooming Pearls -
162238

Price: \$8.00



Stampin'
Dimensionals -
104430

Price: \$4.25



Mini Glue Dots -
103683

Price: \$5.75



Multipurpose
Liquid Glue -
110755

Price: \$5.50



Sponge Daubers -
133773

Price: \$5.50



Stampin' Cut &
Emboss Machine -
149653

Price: \$128.00

Twin Hearts Card - Adoring Hearts Bundle

New Product Premier

Debbie Crowley

732-397-9128

expressivelydeb@gmail.com

<http://www.expressivelydeb.com>



Paper Trimmer -
152392

Price: \$26.00