

# Quick & Easy Diagonal Layer Cut Card

Debbie Crowley

732-397-9128

[expressivelydeb@gmail.com](mailto:expressivelydeb@gmail.com)

<http://www.expressivelydeb.com>

*expressively deb...*

*...the only limitation is your imagination*



**There is a complete Supply List at the end of this Tutorial.**

## **Make The Cuts:**

- Cut a Thick Basic White card base 4 1/4" x 11", and score it at 5 1/2"
- Cut two coordinating patterned paper layers 4" x 5 1/4".
- Die cut a favorite decorative element.
- Cut two 12" lengths of Baker's Twine. I used white and Linen.
- Cut a sentiment layer. I used the Wonderful Thoughts Bundle and die cut the stamped sentiment with the coordinating die.
- **NOTE: If you cut two card bases, two sentiment layers, and two elements, you can easily put together two cards. The patterned paper layers will be cut.**

## **Let's Make A Card**



- Cut the diagonal on the patterned paper layers as shown below. Place the two patterned paper layers in front of you, one with the pattern side up and the second with the watercolor side up as shown below.

# Quick & Easy Diagonal Layer Cut Card

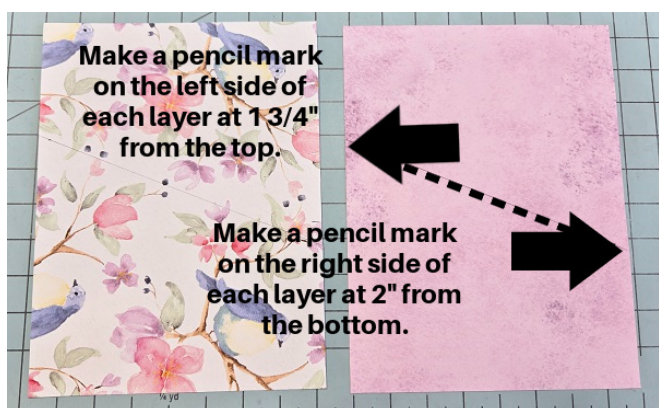
Debbie Crowley

732-397-9128

[expressivelydeb@gmail.com](mailto:expressivelydeb@gmail.com)

<http://www.expressivelydeb.com>

- Make a pencil mark on the left side of each of the layers 1 3/4" down from the top.
- Do the same on the right side 2" up from the bottom.
- Cut the layers using your Paper Trimmer from the pencil mark on the left to the pencil mark on the right.
- Switch the cut layers as shown in the second photo.



- Attach the switched layers to the card front.
- Adhere a 1/4" cardstock or patterned paper strip across the diagonal line over the two patterned paper pieces.
- Attach your decorative element.
- Attach the stamped sentiment.
- Add a little sequin sparkle.

I hope you enjoyed this Tutorial. If you have any questions, please reach out to me. Always my best to you,

Debbie



# Quick & Easy Diagonal Layer Cut Card

Debbie Crowley

732-397-9128

[expressivelydeb@gmail.com](mailto:expressivelydeb@gmail.com)

<http://www.expressivelydeb.com>



Adoring Hearts  
Bundle (English) -  
162570

Price: \$53.00



Wonderful  
Thoughts Bundle  
(English) - 161494

Price: \$53.00



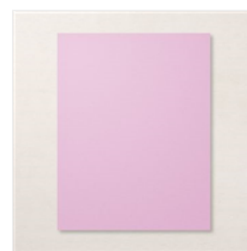
Flight & Airy 12" X  
12" (30.5 X 30.5  
Cm) Designer  
Series Paper -  
162977

Price: \$0.00



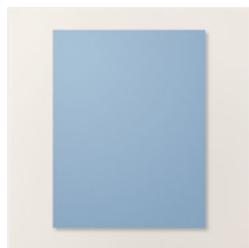
Basic White 8-1/2"  
X 11" Thick  
Cardstock -  
159229

Price: \$9.00



Fresh Freesia 8-  
1/2" X 11"  
Cardstock -  
155613

Price: \$10.00



Boho Blue 8-1/2" X  
11" Cardstock -  
161724

Price: \$10.00



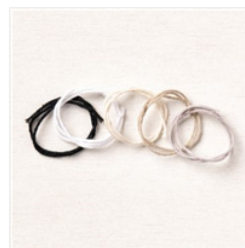
Fresh Freesia  
Classic Stampin'  
Pad - 155611

Price: \$9.00



Boho Blue Classic  
Stampin' Pad -  
161650

Price: \$9.00



Baker's Twine  
Essentials Pack -  
155475

Price: \$11.00



Stampin'  
Dimensionals -  
104430

Price: \$4.25



Multipurpose  
Liquid Glue -  
110755

Price: \$5.50



Paper Trimmer -  
152392

Price: \$26.00