

Silhouettes Water Color Resist

Bonnie-Lynn Lenke

623-229-6400

Bonnie@Stampingwithbonnielynn.com

www.stampingwithbonnielynn.com

Amazing Silhouettes Water Color Resist



Today I'm sharing with you the Amazing Silhouettes Stamp Set and how to do water color resist technique. There is a video to watch, and I recommend you do to better under the instructions, on how to do this technique. As you do the water painting, I suggest you go slow and have a piece of scratch paper to try the color on before painting on your project. A Stamparatus is a must have for this technique. Have fun and enjoy learning something new. Video located at <https://youtu.be/VYfrb01Jm40>

Let's Get Started

1. Place your Shimmery White paper in a corner of your Stamparatus and then place the tree silhouette stamp in the center. (I recommend leaving the cushion pad in the Stamparatus).
2. Ink the bottom part of stamp in Misty Moonlight a little over halfway up then using a sponge dauber add Balmy Blue Ink. I made sure I applied some lightly over where the Misty Moonlight ended for a blend of the 2 colors. Then I applied the Balmy Blue heavy to light as I moved toward top of stamp.
3. Now stamp this onto Shimmery White and press down hard rubbing top of Stamparatus to get all the ink transfer.
4. Being careful not to displace the stamp, clean it off. Then making sure you paper is still in the corner, apply Versa-Mark to stamp and stamp the paper in the exact spot as before (this is why we use the Stamparatus).
5. Using Clear Embossing powder heat emboss this image.
6. Using Old Olive, Mossy Meadow, Soft Suede and Bermuda Bay Inks and the Water Painter paint in the negative space to fill in the tree. With a tissue or paper towel wipe excess ink off of clear heat emboss area. Let dry or carefully dry with a heat gun.
7. Fold card base on score line and burnish with Bone Folder.
8. Emboss Crumb Cake paper with the Hammered Metal 3D Embossing Folder. Adhere to card base at an angle.
9. Adhere White Shimmer paper with your beautiful Water Color Resist work on it to card front.
10. Fold a piece of Denim 3/8" Ribbon in half and adhere to card front.
11. Heat Emboss your greeting on Misty Moonlight in White Embossing Powder and die cut out with Tailor Made Tag Die. Adhere to card front with Dimensionals over Ribbon.

Silhouettes Water Color Resist

Bonnie-Lynn Lenke

623-229-6400

Bonnie@Stampingwithbonnielynn.com

www.stampingwithbonnielynn.com

12. Using your tree silhouette stamp and Balmy Blue Ink, stamp off once then stamp onto Basic White card stock centering it. Now stamp greeting in Misty Moonlight Ink over the Silhouette stamp and adhere to card inside.

And now you have a beautiful card to brighten someone's day.

Happy Stamping!

Card Recipe

- **Pool Party:** 8-1/2" x 5-1/2" scored at 4-1/4"
- **Crumb Cake:** 4" x 5-1/4"
- **Shimmery White:** 2-3/4" x 5"
- **Basic White:** 4 x 5-1/4" (inside)

Supplies Used:

- **Stamps:** Amazing Silhouettes, Art Gallery (greeting), Plentiful Plants (inside greeting)
- **Dies:** Tailor Made Tags
- **Embossing Folder:** Hammered Metal 3D
- **Cardstock/Paper:** Pool Party, Crumb Cake, Shimmery White
- **Stampin Pads:** Misty Moonlight, Balmy Blue, Soft Suede, Bermuda Bay, Mossy Meadow, Old Olive, VersaMark
- **Embellishments/Ribbon:** 3/8" Denim Ribbon, Clear Embossing Powder
- **Adhesives:** Dimensionals, Tear N Tape, Stampin Seal, Liquid Glue, Glue Dot
- **Tools:** Paper Trimmer, Take Your Pick, Stampin Cut & Emboss Machine, Stamparatus, Clear Blocks, Bone Folder, Heat Tool, Embossing Buddy, Water Painters

Silhouettes Water Color Resist

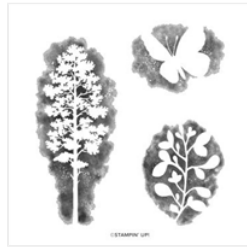
Bonnie-Lynn Lenke
623-229-6400

Bonnie@Stampingwithbonnielynn.com
www.stampingwithbonnielynn.com



Amazing Silhouettes Bundle (English) - 157819

Price: \$44.00



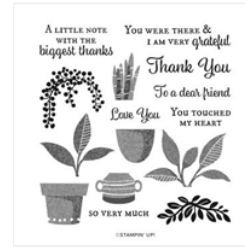
Amazing Silhouettes Cling Stamp Set - 157814

Price: \$22.00



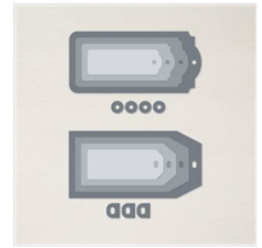
Art Gallery Photopolymer Stamp Set - 158201

Price: \$22.00



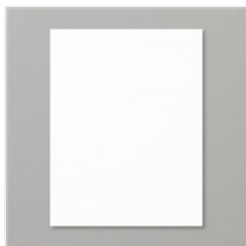
Plentiful Plants Photopolymer Stamp Set - 155693

Price: \$21.00



Tailor Made Tags Dies - 155563

Price: \$22.00



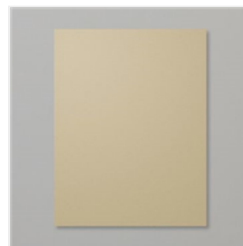
Shimmery White 8-1/2" X 11" Cardstock - 101910

Price: \$10.00



Pool Party 8-1/2" X 11" Cardstock - 122924

Price: \$8.75



Crumb Cake 8-1/2" X 11" Cardstock - 120953

Price: \$8.75



Misty Moonlight 8-1/2" X 11" Cardstock - 153081

Price: \$8.75



3/8" (1 Cm) Denim Ribbon - 149590

Price: \$7.00



Misty Moonlight Classic Stampin' Pad - 153118

Price: \$7.50



Balmy Blue Classic Stampin' Pad - 147105

Price: \$7.50



Soft Suede Classic Stampin' Pad - 147115

Price: \$7.50



Soft Suede Classic Stampin' Ink Refill - 115663

Price: \$3.75



Bermuda Bay Classic Stampin' Pad - 147096

Price: \$7.50

Silhouettes Water Color Resist

Bonnie-Lynn Lenke
623-229-6400

Bonnie@Stampingwithbonnielynn.com
www.stampingwithbonnielynn.com



Bermuda Bay
Classic Stampin'
Ink Refill - 131156

Price: \$3.75



Old Olive Classic
Stampin' Pad -
147090

Price: \$7.50



Old Olive Classic
Stampin' Ink Refill
- 100531

Price: \$3.75



Mossy Meadow
Classic Stampin'
Pad - 147111

Price: \$7.50



Mossy Meadow
Classic Stampin'
Ink Refill - 133651

Price: \$3.75



VersaMark Pad -
102283

Price: \$9.50



Basics Embossing
Powders - 155554

Price: \$18.00



Heat Tool - 129053

Price: \$30.00



Water Painters -
151298

Price: \$12.00



Clear Block E -
118484

Price: \$12.00



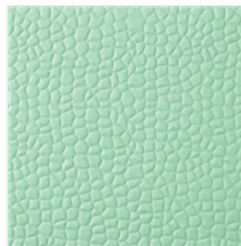
Stamparatus -
146276

Price: \$49.00



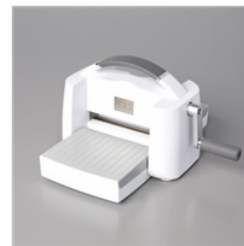
Stampin' Pierce
Mat - 126199

Price: \$5.00



Hammered Metal
3D Embossing
Folder - 150646

Price: \$9.00



Stampin' Cut &
Emboss Machine -
149653

Price: \$120.00



Paper Trimmer -
152392

Price: \$25.00



Sponge Daubers -
133773

Price: \$5.00



Stampin' Seal -
152813

Price: \$8.00



Stampin'
Dimensionals -
104430

Price: \$4.00



Multipurpose
Liquid Glue -
110755

Price: \$4.00

Silhouettes Water Color Resist

Bonnie-Lynn Lenke
623-229-6400

Bonnie@Stampingwithbonnielynn.com
www.stampingwithbonnielynn.com

Add All to Cart